

Researching Light, the Source of life

Life for Balancing Your Health!



Since our establishment in 1998, we have developed the only type of far-infrared ray heater in the world, adopting world-patented panel heater, and have kept the first position in terms of domestic market share as a result of continuously supplying far-infrared ray capsules to domestic hospitals and clinics. By 2012, we have finished clinical trial in the obesity treatment <Kyung-Hee University Medical Center 2011> for it, which is the only one in Korea, and have registered it to Food and Drug Administration(FDA) in the U.S.A, and have started to export it to U.K, Belgium and Sweden, being admitted of the technology. We have been developing full automatic far-infrared ray capsule and multi-purpose small size far-infrared ray capsule through the investment of more than 50% of the operating profit, targeting to produce the products with world-first technology, effect, price and user convenience by 2013.

2009

- 04.03 Made a Rainbow product export agreement with Canadian company
- 05.20 Global Standard Management Grand Prize (The area or technical management) Korea Management Association Registrations & Assessments Inc.
- 09.17 Women friendly business agreement (Gwangju Women's New Job Support Headquarters)
- 10.06 Purchased product liability insurance (PL insurance) P150902200 medical heaters, electric steam machines, electric heaters for steam sauna
- 11.10 Item license for medical heaters MS-980 was changed (Korea Food and Drug Administration no. 02-58 MS-980S)
- 11.12 12 CE Marking (EU mark) was acquired for Sauna Heater MS-980CE
- 12.29 Electrical appliance safety certificate (HE07050-9002A) was acquired for electric sauna machine (MS-980S)

2010

- 02.10 A research institute affiliate with the company was established
- 02.24 ISO 13485(CMDCAS) certification, BSI
- 05.04 Selected as a brand guaranteed by KOTRA (no. 2010-118-01)
- 10.06 KGMP (Medical device manufacturing quality certificate)
- 12.24 CE Marking (EU mark) was acquired for Sauna Heaters MS-660S

2011

- 01.01 Selected as a self-standing promising small/medium business
- 04.01 Patent (no.10-1028164) was registered, the Korean Intellectual Property Office
- 05.20 ISO 9001/14001 certification was acquired
- 07.04 Innobiz certification was acquired
- 08.18 Q-Mark was designated (medical heaters), KTC
- 10.10 Performance certification, the Small and Medium Business Administration
- 11.25 Venture business certificate was acquired

Researching Light, the Source of life
Life for Balancing Your Health!



Zen Beam

Beautiful body line! Pursuing the health and beautiful body line!

ZENBEAM with streamlined shape and intense two-tone color symbolizes youth, health and beautiful body line. Far-infrared ray which is warm like sunlight can makes transparent skin and beautiful body line by promoting blood circulation in the body, excreting body fat and wastes.

| | | | |
|---------------------------|----------------------|-------------|--------------------------|
| Product name | ZenBeam | Application | Hospitals, general homes |
| Use | Medical heater | Dimension | 651(W) X 480(L) X 380(H) |
| Input power | AC 220V | Frequency | 50~60Hz |
| Maximum power consumption | 440W | Weight | Around 6kg |
| Product composition | ZenBeam, user manual | Color | Silver & wine |
| Material | ABS resin | Effect | Pain relief |

I have a beautiful line!
Let me look similar to natural. Zem Beam



Researching Light, the Source of life

Life for Balancing Your Health!



Rainbow

36.5 degree.. the body temperature has close relationship with health.
The body temperature increase helps promote blood circulation, increase level of immunity and prevent various adult diseases.
Modern people suffer from adult diseases such as various tumors and hand-trembling due to blood flow disorder because lack of exercise, strong-tasting foods and stress cause the problem in the circulation of energy and hypothermia.
Above all, hypothermia is directly related to the human health because it causes decrease in the level of immunity. When you cannot spare time for exercise or cannot take aerobic exercise, it can be used conveniently at any place such as home or office.

| | | | |
|---------------------------|----------------------|-------------|--------------------------|
| Product name | Rainbow, MS-660S | Application | Hospitals, general homes |
| Use | Medical heater | Dimension | 613(W) X 490(L) X 335(H) |
| Input power | AC 220V | Frequency | 50~60Hz |
| Maximum power consumption | 310W | Weight | Around 5kg |
| Product composition | Rainbow, user manual | Color | Grey , wine, beige |
| Material | ABS resin | Effect | Pain relief |

Rainbow, is a novel item that can be used
anytime, anywhere, at home or in the office
to ensure both health and beauty



Researching Light, the Source of life

Life for Balancing Your Health!



Sun Beam

The energy necessary for the modern people who are tired with the busy daily life physically and mentally!
It is not necessary to travel to the remote place off the city, finding out a calm place.
When exhausted physically and mentally, it may be necessary to take some static psychotherapy as well as taking rest with abdominal breathing.
Take abdominal breathing calmly, lying in the far-infrared-ray capsule at home!
Warm energy comes deep into the body and spreads from the belly to the whole body like warmth of the sunlight. At the same time, level of immunity increases and stress is discharged together with sweat through the blood circulation and body temperature.

| | | | |
|---------------------------|-----------------------|-------------|--------------------------|
| Product name | Sun Beam , MS-660S-B | Application | Hospitals, general homes |
| Use | Medical heater | Dimension | 660(W) X 540(L) X 385(H) |
| Input power | AC 220V | Frequency | 50~60Hz |
| Maximum power consumption | 310W | Weight | Around 5kg |
| Product composition | Sun Beam, user manual | Color | Beige |
| Material | ABS resin | Effect | Pain relief |

Physically and mentally tired of reality,
we need clear energy!!



Researching Light, the Source of life

Life for Balancing Your Health!

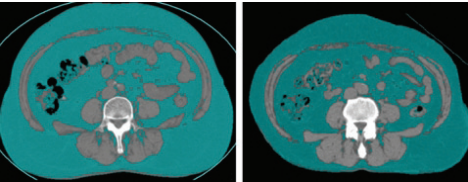


Sun Beam Capsule

Far-infrared ray wave of 4~16um is radiated from the radiator made of nano carbon material and promotes metabolism and decreases visceral fat. <It is expected that the medical far-infrared warmer would have much possibility of use for the patients of obesity, especially visceral obesity, due to its effect of percutaneous infrared thermotherapy. – Rehabilitation Medical Treatment Department of Oriental Medicine in Kangdong Kyung-Hee University Medical Center >

| | | | |
|---------------------------|------------------------------|-------------|---|
| Product name | SunBeam capsule, MS-980S | Application | Heater for whole body treatment, physical therapy departments |
| Use | Medical heater | Dimension | 2080(W) X 920(L) X 1000(H) |
| Input power | AC 220V | Frequency | 50~60Hz |
| Maximum power consumption | 1500W | Weight | 95kg |
| Product composition | SunBeam capsule, user manual | Color | Beige, white |
| Material | ABS resin | Effect | Pain relief |

Change in abdominal fat distribution < Dec. 31, 2011 >



| [cm ²] | Baseline | After 6 weeks | Decrease |
|--------------------|----------|---------------|----------|
| Total Fat | 449.00 | 343.37 | 105.63* |
| Visceral Fat | 177.00 | 144.82 | 32.18* |
| Subcutaneous Fat | 272.00 | 198.55 | 73.45* |

360° general high-efficiency devices that can be far-infrared shower Sunbeam Capsule

