

121 Av Robert Schuman
ZI of Nivelles North
1400 Belgium
Info@filame.com
www.filame.com
Tel : +32/67.05.06.00
Fax : +32/67.55.06.01



Who we are ?

As subcontractor, Filame Brussels is specialized in **wire and sheet metal works**. We are offering varied technology for metalworking, renowned for its market presence, customer services and high quality. Filame is dedicated to using and perfecting optimal processes performed by reliable staff, for quality approaching the zero defect threshold.



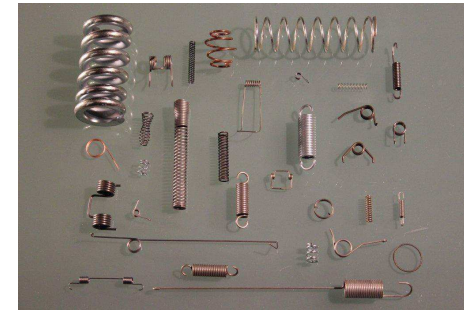
Presentation of our production range

1) The springs :

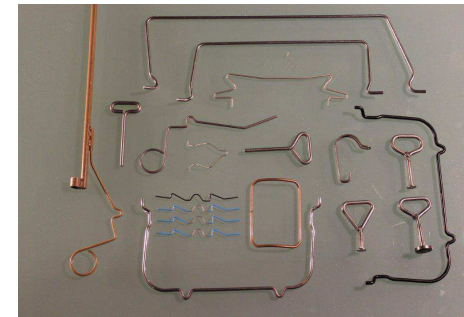


From wire size : 0,1 mm to 3,5 mm in small, medium and high series

From wire size : 3,75 mm to 15 mm in small series



2) The wire forms :



From wire size : 0,3 mm to 8 mm in small, medium and high series (4 mm to 8 mm : soft material)



3) The Sheet metal works :

Laser cutting – punching - bending



- Our machinery also enables us to produce complex parts **without any tooling costs**. One of our major assets effectively resides in our CAD/CAM controlled machines, such as our CNC Laser cutting centres, CNC punching machine and CNC bending machines. Aside from the manufacture of prototypes at the best possible costs, our competitiveness is clear for small and medium series, with large series manufacturing operations generally being less expensive when performed on automatic presses.

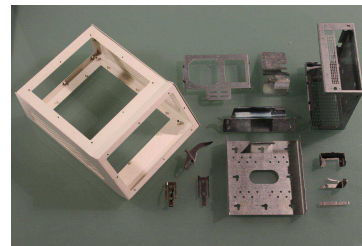
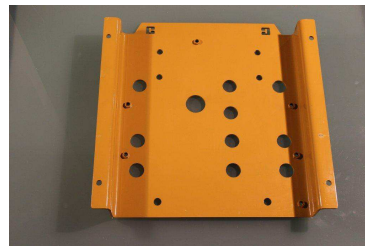
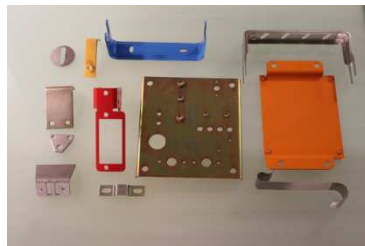
Operating ranges for Laser-Punching Machines:

Sheet size : Max 3000 x 1500 mm

Steel thickness: from 0.3 mm to 10 mm.

Stainless steel thickness: from 0.3 mm to 6 mm. (aluminum to 4 mm)

- Filame also provides [welding services](#).



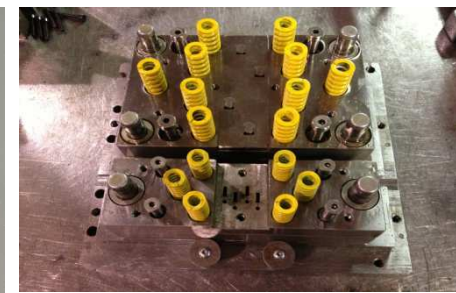
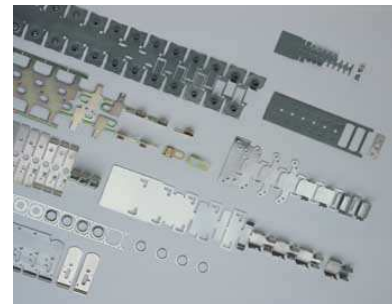
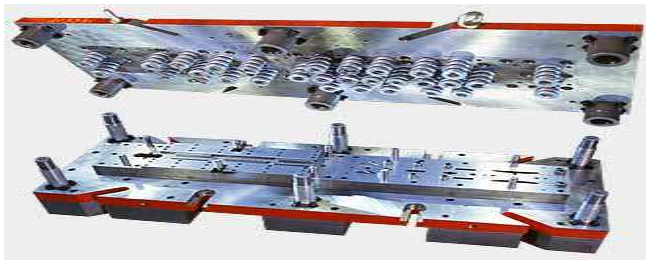
4) Press works :

- Automatic and stand-alone press works :

With its diverse range of press equipment, Filame can assist you with your need for cut and/or drawn parts in small, medium or large series. Our tooling workshop is used to develop solutions to meet the volume and product life desired by the customer.

Whether for single units or several millions of parts, Filame offers you a comprehensive solution.

- - Our product range from 10 T to 320 T;
- - Single and double crank mechanical presses;
- - Mechanical and digital feeders;
- - Integrated tooling workshop;
- - Designed using Solidworks 3D and Logopress 3D;



Features :

- - Sheet metal thickness from 0.15 mm to 6 mm.
 - Sheet metal width from 3 mm to 500 mm.
 - Production in small, medium and large series (up to 500 strokes per minute)

5) Finishing department

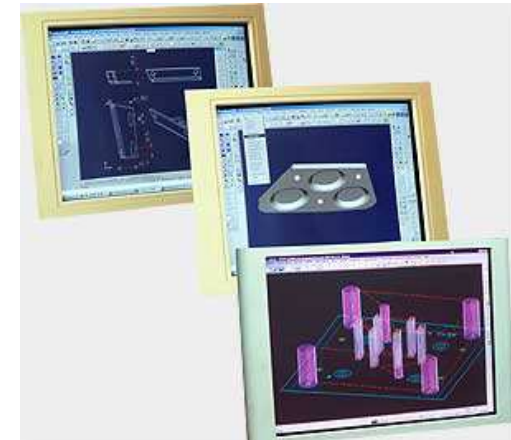
By resistance welding or six-axis robot welding, Filame offers you the possibility of producing mechanically welded assemblies in small, medium and large series.

With our six machines, Filame is offering the best quality
In cleaning, deburring and polishing treatment



6) Quality

- **With induction gauges, infrared sensors, ejection test, lasers, probes and camera inspections**, our production inspection systems enable us inspect all of our manufactured products with the automatic disposal of any faulty part detected. Furthermore, some of our machines perform automatic checks by continuous statistical analysis based on the calculation of the mean to the nominal dimensions requested, and readjust themselves to continuously improve process CPK.
- Of course, our inspection means installed in the metrology room are just as impressive.
- **Three-dimensional test bed, profile projectors, simple or camera microscopes, micrometres and digital comparators** for inspecting dimensional parameters.
- **Our compression, extension and torsion test beds** can perform up to 16 tests in a single operation and produce comprehensive test reports (CP, CPK, mini, maxi expansions, Gauss curve, etc.).
- Our entire organization, managed by a high-performance computer network (ERP, EDI, CAO, CAD/CAM, etc.), provides full and immediate traceability.
- Filame is certified ISO 9001 (V2008) and has many Customers Certifications like the Caterpillar Supplier Certification



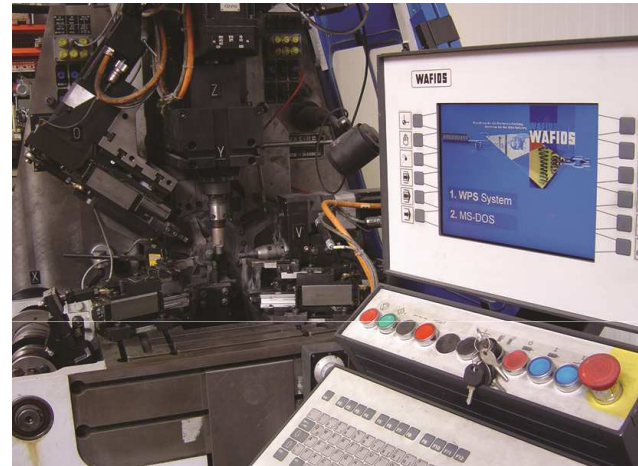
Some of our Customers

- **Our top 10 list of customers contains world and European leaders in their fields of activity and demonstrates our renowned know-how in the manufacturing operations entrusted to our company.**
- **Breakdown of our customers:**
- 1. Civil engineering machinery, forklifts & industrial vehicles: +/- 25 % turnover
 2. Automotive industry: +/- 20%
 3. Locksmiths: +/- 20%
 4. Construction and building equipment: +/- 10%
 5. Machinery construction: +/- 10 %
 6. Aeronautics: +/- 5%
 7. Medical & Pharmaceutical industry: +/- 3%
 8. Seals: +/- 3%
 9. Miscellaneous: +/- 4 %
- Automotive sector : Trèves, PVL, Schaeffler, Sika, Audi Brussels
- Locks Industrie : Euro-Locks, Emka, Assa Abloy
- Medical : Pharmatechnologie, Thissen, Huckert, Cardiatis
- Industry : Caterpillar, Vigan, St Gobain, Twindisc, Sapim, Picanol
- Building : Vanderplanck
- Displays : Créaset, Autajon
- Seal : CPI-Liard, Suebel, All Seals
- Weapon industry : Mecar, Sabiex

Some more pictures.....



Medical an pharma parts



- Automotive parts



- Locks industry parts

