



# Kyung Nam Precision Co.

## Introduction



**Year 2014**

\*Website: [www.knpco.kr](http://www.knpco.kr) \*Address: No.35, Saebyeok-ro 77beon-gil, Sasang-gu, Busan, Rep. of Korea zip code 617-843  
\* Tel: +82-51-325-3722 \* FAX: +82-51-317-3722 \*E-mail : knmold@chol.com



To Assure Reliability for Patronage

경남정공은 보다 나은 기술력으로 고객에게 만족을  
드리는 기업이 되겠습니다.

**KN**  
Kyung Nam  
Precision Co.

## Company Profile

- History
- Organization Chart
- Equipment
- Main Client
- Certification
- Reference



To Assure Reliability for Patronage

경남정공은 보다 나은 기술력으로 고객에게 만족을  
드리는 기업이 되겠습니다.

**KN**  
Kyung Nam  
Precision Co.

## History

Since 1994

- 1994.06 : Established Kyung Nam Precision, Busan, Korea
- 2002.04 : Approved of 1<sup>st</sup> cooperative company by Doosan Heavy Industries & Construction
- 2002.08 : Developed and produced Swage(Transition) Nozzle for Manufacturing Method & a mold & Started to export them.
- 2003.06 : Authorized as a bright prospect export Company (Small and medium business administration)
- 2004.06 : ISO 9001:2000 (renew ISO 9001:2008 July 16<sup>th</sup> 2013)
- 2005.01 : Started to supplying Turbine / Generator parts to power plant
- 2008.03 : Registration as a venture company
- 2009.01 : Selection as a excellent cooperation company of DOOSAN(2009)
- 2009.11 : Started Gas Turbine Sealing Parts
- 2009.10 : Receiving a prize as Gas Turbine parts localization(from Doosan)
- 2010.02 : Selection as a excellent cooperation company of DOOSAN(2010)
- 2012. 01: Approved of 1<sup>st</sup> cooperative company by POSCO
- 2012. 08: Approved of 1<sup>st</sup> cooperative company by KOSPO



To Assure Reliability for Patronage

경남정공은 보다 나은 기술력으로 고객에게 만족을  
드리는 기업이 될 것입니다.

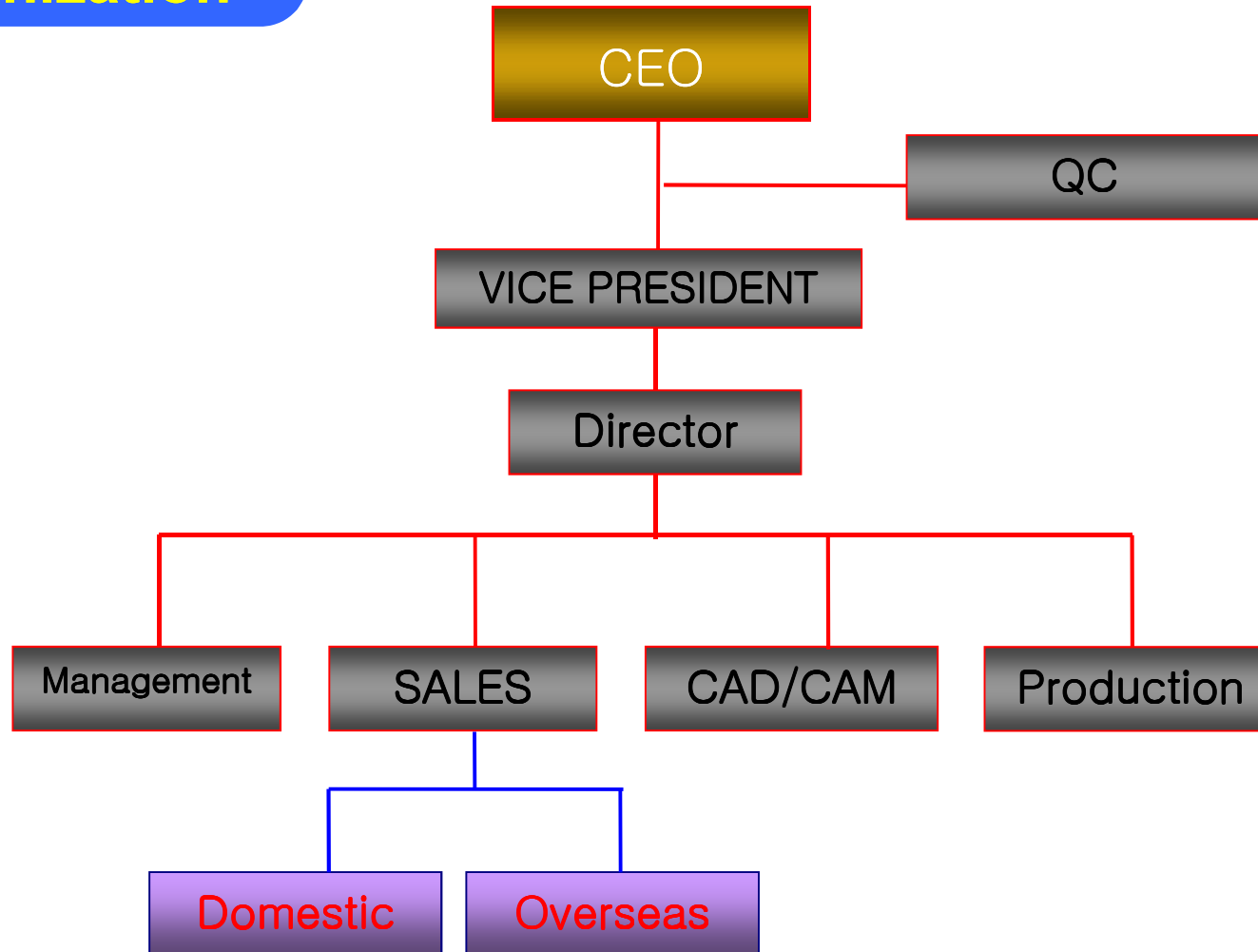
**KN**  
Kyung Nam  
Precision Co.

## History

- 2013.12 : Approved of 1<sup>st</sup> cooperative company by HYOSUNG HEAVY INDUSTRIES
- 2014.01: Approved of 1<sup>st</sup> cooperative company by POSCO SPECIALIST STEEL
- 2014.02 : Approved of 1<sup>st</sup> cooperative company by SAMSUNG HEAVY INDUSTRIES

Since 1994

## Organization





To Assure Reliability for Patronage

경남정공은 보다 나은 기술력으로 고객에게 만족을  
드리는 기업이 되겠습니다.



## Equipment

NO.	Equipment name	Size	Maker	Remarks
1	CNC Milling Machine (No.12)	X 2,500, Y1,500 Z1,500	OKK	ATC
2	CNC Boring Machine(150T)	X8,000 x Y3,500 x Z1,800	Mishubishi	ATC
3	CNC Boring Machine(130T)	X2,500 x Y1,500 x Z1,500	Toshiba	ATC
4	CNC Milling Machine(No.12)	X 2,500, Y1,500 Z1,500	OKK	
5	CNC Milling Machine Bed Type (No.8)	X1,300 x Y700 x Z700	Doosan Mecatec	ATC
6	CNC Milling Machine Bed Type (No.7)	X1,300 x Y700 x Z700	Doosan Mecatec	ATC
7	CNC Milling Machine Bed Type (No.7)	X2,000 x Y840 x Z800	Doosan Mecatec	ATC
8	CNC Milling Machine Bed Type (No.5)	X800 x Y400 x Z400	OKK	ATC
9	CNC Lathe Machine	d'180x L280	Keumdan	
10	Lathe Machine	d'580 x L2,000	Hwa Cheon	
11	Lathe Machine	d'580 x L2,000	Hwa Cheon	
12	Milling Machine	200*500*800	Hwa Cheon	
13	Saw Cutting Machine	W1,300 x H3,500 x L10,000	Dong Young	
14	Saw Cutting Machine	W600 x H600 x L6,000	Young il	
15	Oil Pressure Press	300ton	Sang Myung	
16	Grinder Tool	180*250	Samchulri	
17	Bed Grinder	180*460	Seo Won	
18	Hoist Crane	20/10Ton	Samsung	1 Set



To Assure Reliability for Patronage

경남정공은 보다 나은 기술력으로 고객에게 만족을  
드리는 기업이 되겠습니다.



## Equipment

NO.	Equipment name	Size	Maker	Remarks
19	Hoist Crane	30Ton	Sam Sung	
20	Hoist Crane	10/3 Ton	Dae Ha	
21	Hoist Crane	10/3 Ton	Sam Sung	
22	Hoist Crane	5Ton	Sam Sung	
23	Hoist Crane	3Ton	Sam Sung	
24	Pneumatic Pin Marking	X100 Y100 Z300	On Vit Technics	
25	Radial	1000*1500*1800	OKUMA	
26	AIR COMPRESSOR	15KW	Se Won	
27	AIR COMPRESSOR	15KW	Se Won	Air Dryer installation
28	AIR COMPRESSOR	15KW	Se Won	Air Dryer installation
29	CO2 Welding Machine	5KW	Dae Woo	
30	DC ARC Welding Machine	170A	WELTECH	
31	Milling Machine	X300 Y300 Z800	Sam Young	
32	Tapping & DRILLING	d'19	Yong Soo	
33	TIG Welding Machine	350A	WELTECH	
34	Wire Cutting	400 * 400 * 420	FUNUC	
35	PMI	X-RAY type	SPECTRO	
36	Surface Roughness Instrument	Portable	Mishtoyo	





To Assure Reliability for Patronage

경남정공은 보다 나은 기술력으로 고객에게 만족을 드리는 기업이 되겠습니다.

**KN**  
Kyung Nam  
Precision Co.

## Equipment



**CNC BORING M/C  
(NB-35)**



**CNC PLANO  
MILLING (NB-20)**



**CNC BORING  
M/C(NB-15)**



**CNC MILLING  
M/C(NB-13, 12)**



**CNC MILLING  
M/C(NB-7)-2sets**



**CNC MILLING  
M/C (NB-8)-1set**



**SAW MACHINE  
(Ø1300)**



**SAW MACHINE  
(Ø450)**



**PRESS  
(500 TON)**



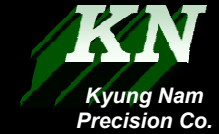
**LATHE  
-2sets**



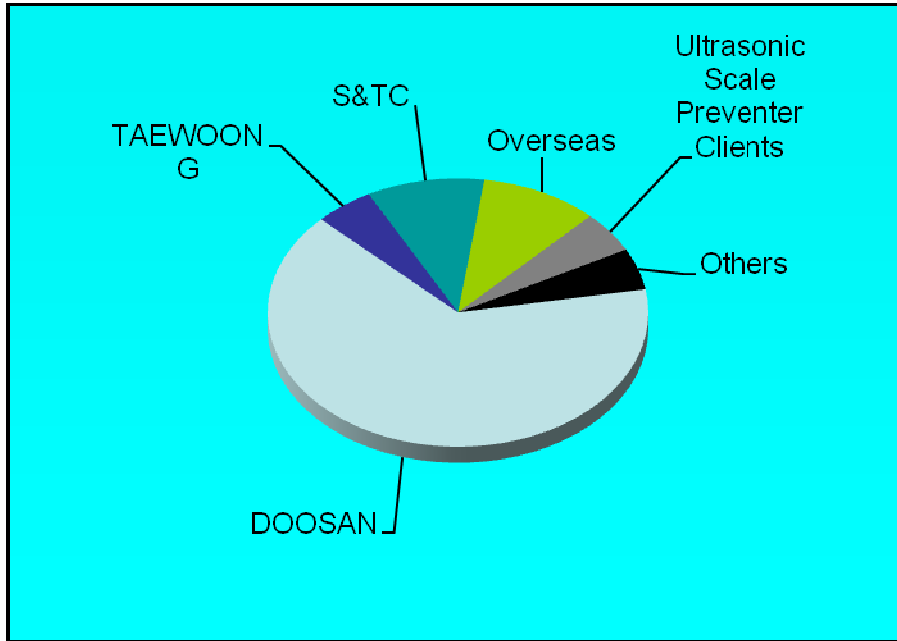


To Assure Reliability for Patronage

경남정공은 보다 나은 기술력으로 고객에게 만족을 드리는 기업이 되겠습니다.



# Major Clients



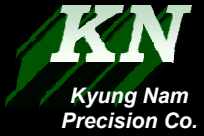
Client name	Distribution of Sales
DOOSAN	65 %
TAEWOONG	5 %
S&TC	10 %
Overseas(GEA, JORD, PT. Heat exchangers)	10 %
Ultrasonic Scale Preventer	6 %
Others (KHE etc.)	4 %
TOTAL	100 %

◆ Average annual sales (2011~2013) : US\$4,600,000



To Assure Reliability for Patronage

경남정공은 보다 나은 기술력으로 고객에게 만족을 드리는 기업이 되겠습니다.



# Certification

Small and Medium Business Administration

제 060216-02397호

**경영혁신형 중소기업 확인서**

업 체 명 : 경남정공  
대 표 자 : 이상근  
주 소 : 부산 사상구 학장동 719-35  
유효기간 : 2006.12.20 ~ 2009.12.19

위 업체는 경영혁신형 중소기업 발굴육성 사업에 의해 선정된 경영혁신형 중소기업임을 확인합니다.

2006년 12월 20일

부산·울산지방중소기업청장

**실용신안등록증**

등록번호 0298159호

출원번호 제 2004-000021호  
출원일 2004년 04월 23일  
등록일 2005년 04월 07일

발명자명칭: 도래지전 노즐의 제조방법

실용신안번호: 이상근 (070808-1768812)  
부산광역시 연제구 연산동 1005-10번지

고안자: 이상근 (071135-180511)  
중앙남도 신해시 중앙동 20-1번지 5층 3층 빌딩연면적 403.8

3820년 12월 02일

특허청장

**특허증**

특허번호 0463717호

출원번호 제 2004-000001호  
출원일 2004년 04월 23일  
등록일 2005년 04월 07일

발명자명칭: 도래지전 노즐의 제조방법

특허번호: 이상근 (070808-1768812)  
부산광역시 연제구 연산동 1005-10번지

발명자: 이상근 (070808-1768812)  
부산광역시 연제구 연산동 1005-10번지

3800년 12월 17일

특허청장

DOOSAN 부산중공업 Certificate No. : DGT-CQ-026

**Certificate of Qualification**

경남정공 Vendor No. 606-36-98470

주소: 부산 사상구 학장동 719-35번지 (Address)

대상품목: MS01F TBN Side Seal Plate 가동 (Item)

유효기간: 2009.10.28 ~ 2012.10.27 (Valid Date)

귀사의 품질시스템과 제조기술능력 평가를 수행한 결과 상기 시스템의 완성품에 대해 채택 가능한 협력회사로 인정되었기에 본 인증서를 수여합니다.

This is to certify that company named herein has been classified as a qualified supplier based on a comprehensive assessment of their Quality System and Technical Capability.

2009. 10. 28

발급(발전)품질/EHS담당 상무 김준현

두산중공업 주식회사  
Doosan Heavy Industries & Construction Co., Ltd.

Cert. No. : SRM10-102

**인증서/CERTIFICATE**

경남정공/KYUNG NAM PRECISION CO.

발급/출발: 2010. 12. 01  
만료/유효: 2010. 12. 01

귀사의 품질시스템과 제조기술능력 평가를 수행한 결과 2010년도 종합역량평가로 수행한 결과 2010년도 우수협력회사로 선정되었기에 본 인증서를 드립니다.

This is to certify that company named herein has been classified as a superior supplier for 2010 based on a comprehensive assessment of your quality system and delivered product history.

January 01, 2010

두산중공업 주식회사  
Doosan Heavy Industries & Construction Co., Ltd.

제 2010000740호

**벤처기업확인서**

업 체 명 : 경남정공  
대 표 자 : 이상근  
주 소 : 부산 사상구 학장동 719-35  
확인유형 : 기술보유기업(기술보유기업)  
평 가 기 관 : 기술보증기금  
유효기간 : 2010년 03월 09일 - 2011년 03월 08일

위 업체는 벤처기업육성에 관한 특별조치법 제25조의 규정에 의하여 벤처기업임을 확인합니다.

2010년 03월 04일

기술보증기금 이사장

Small and Medium Business Administration

**CERTIFICATE**

This is to certify that Kyung Nam Precision Co. represented by SANG-GUN LEE has been designated as a Promising Export Firm by the Small & Medium Business Administration, Republic of Korea

Certificate No : 08-42 Certified Date : 2008. 6. 1  
Issue Date : 2008. 6. 1 Expiry Date : 2010. 5. 31

BONG-WHAN YANG *양봉환*  
Authorized Local Signatory

BUSAN · ULSAN Export Center, SMBA

Certificate #07070881

SGS

KYUNG NAM PRECISION Co.

#72517, HAKJANG-DONG, SASANG-GU, BUSAN, Korea

ISO 9001:2008

Design, Development and Manufacturing for Energy Related, Mining, Flange, and Industrial Machinery parts

This certificate is valid from 15 July 2010 and 15 July 2010 and remains valid subject to satisfactory surveillance audits. Recertification audit due before 15 June 2012. Issue 3. Certificate issue 15 July 2007

SGS

Small and Medium Business Administration

**수출유망중소기업지정증**

제 08 부산·울산 - 42호

업 체 명 : 경남정공 (사업자등록번호: 606-36-98470)  
생산품목 : 스테이지노즐  
주 소 : 부산시 사상구 학장동 719-35  
대 표 자 : 이 정 근 (주선등록번호: 070808-1768812)

귀 업체는 중소기업 수출지원센터의 설치 및 운영에 관한 규정에 따라 2008년도 수출유망 중소기업으로 지정함.

지정기간: 2008. 6. 1 ~ 2010. 5. 31

2008. 6. 1

부산·울산중소기업 수출지원센터장

**사업자등록증**

(일반과세자)

등록번호: 606-36-98470

업 체 명 : 경남정공  
대 표 자 : 이상근  
주 소 : 부산시 사상구 학장동 719-35  
확인유형 : 기술보유기업(기술보유기업)  
평 가 기 관 : 기술보증기금  
유효기간 : 2010년 03월 09일 - 2011년 03월 08일

2009년 10월 09일

부산세무서장



To Assure Reliability for Patronage

경남정공은 보다 나은 기술력으로 고객에게 만족을 드리는 기업이 될 것입니다.



## Reference

### DOOSAN

Sec.	PJT NAME	ITEM	DELIVERY	REMARK
1	For wind power Plant	Torque reaction Linkage	2012.09	
2	HANAM CHP	Roller, Retainer ring, Cover	2012.09	
3	Standard Thermoelectric Power plant	300MW Support Block	2012.08	
4	Wind power strategy	Bearing cover	2012.08	
5	HANAM CHP	Eccentric pin, Dowel pin, Fitting	2012.08	
6	Rabig2 #1 ~4	Support block	2012.08	
7	HANAM CHP	Seal plate, Retainer ring, Transition piece, Block, Guide pin	2012.07	
8	HANAM Cogeneration	U-support	2012.07	
9	Hangjeong Combined plant	Seal plate	2012.07	
10	Haengbok Cogeneration & Yangju Cogeneration	Fan blade for generator	2012.07	
11	Haengbok Cogeneration	Set screw, U-support	2012.06	
12	Phochoen Combined plant	Gas turbine, Fitting	2012.06	
13	Hangjeong Combined plant	GT #1/2 Baffle plate, Support cover, Block	2012.05	
14	Yangju Cogeneration	U-support, Ring spacer, Support cover	2012.05	
15	Haengbok Cogeneration	Seal plate, Ring plate, Retainer plate	2012.05	
16	Samcheonpo #1,2	Wedge	2012.04	
17	Yecheon Pumping up #1/2	Guide vain, Ferrous steel casting	2012.04	
18	Yangju Cogeneration & Phochoen combined plant	Gas turbine Torque Pin	2012.03	
19	Yanbu2 STG & Phochoen combined plant	Fan blade	2012.03	
20	Ujjin #1,2	Steel wedge	2012.03	
21	Phochoen Combined plant	Baffle seal, U-support	2012.03	
22	Yangju Cogeneration	Baffle plate, Retainer plate	2012.02	
23	Phochoen Combined plant	Seal plate, Dowel pin, Retaining ring	2012.02	
24	Sinkori #3/4 Sinuljin #1/2	End Tuen, Gusset, Connector	2012.01	
25	Phochoen Combined plant	Seal plate	2012.01	
26	Yangju Cogeneration	Seal plate	2011.12	
27	MHI LTSA M501 GT	Retainer Ring	2011.12	
28	LISA GT#1	Seal ring, etc.	2011.12	
29	Yeongwok combined plant	DPH machinery package	2011.09	
30	RPP2 TG	Rod-connecting	2011.09	
31	324 COMPLETE	Fan blade	2011.08	
32	Raipur #1/2 STG	Wedge	2011.08	
33	Phochoen Combined plant	Transition piece	2011.08	
34	Foge shop	700 Top/Bottom Flat die	2011.07	
35	Raipur STG	Core and Stacking Jig	2011.06	
36	Yeongheong wind power plant (3MW) Wind power generating system TRA	Locking pin	2011.06	

Sec.	PJT NAME	ITEM	DELIVERY	REMARK
37	324 PJT	Fan blade	2011.06	
38	Phochoen combined plant	Block	2011.05	
39	Western Incheon generator	Fan blade	2011.04	
40	324 GEN, Complete	Fan blade	2011.04	
41	Sinkori #3/4	MSR nozzle neck	2011.03	
42	Yecheon Pumping up #1,2	Installation plate	2011.03	
43	Sinkori #3,4	Foot	2011.02	
44	42MN PRESS	Flat die machining	2011.02	
45	RAIPUR STG	Collar	2011.01	
46	RAIPUR #1,2	Spring bar	2011.01	
47	324 Complete	Wedge & Fan blade	2011.01	
48	Sinkori #3,4	Connector	2011.01	
49	Ujjin #1/2	Rotor Wedge	2011.01	
50	Yecheon pumping up #1,2	Wedge	2011.01	
51	RAIPUR	Z-shape fan blade	2010.12	
52	Yecheon pumping up #1,2	Blind flange, Thrust plate	2010.11	
53	Western sea area adaptive 3MW	Bearing cover	2010.11	
54	LISA #1	U-support	2010.11	
55	Yeonheung wind power plant (2stage)	Bearing cover	2010.10	
56	Sinkori #3,4	Rotor Wedge	2010.10	
57	Yecheon Pumping up #1,2	Guide part	2010.10	
58	Sinkori #3,4	Bracket, Rush rod, Tension rod, CSG pipe	2010.07	
59	16MN Press	Round die	2010.04	
60	Yecheon Pumping up #1,2	Ferrous steel casting	2010.04	
61	Eraring #1~4	Wedge	2010.04	
62	MHI LTSL	Steel round bar	2010.03	
63	Gheco-one #1	Generator Rotor	2010.03	
64	Yecheon Pumping up #1,2	Parts of generator	2010.03	
65	Sinkori, Sinwalseong #1/2, Kori #2	Gen Ring mach & Field Assy	2010.03	
66	Boryung #3	Nozzle box body, etc.	2010.02	
67	16MN Press	#40R-DIE machining and heat treatment	2010.02	
68	Gheco-one #1	WEDGE	2010.01	
69	Ulsan #4,5,6	Reserve stocks of generator coil wedge	2010.01	
70	Yecheon pumping up #1,2	Parts assy	2009.12	
71	Ulsan #4,5,6	Reserve stocks of generator Coil wedge	2009.12	



To Assure Reliability for Patronage

경남정공은 보다 나은 기술력으로 고객에게 만족을  
드리는 기업이 될 것입니다.

**KN**  
Kyung Nam  
Precision Co.

# Business Area

- Power Plants Components
- Industrial Machinery Parts
- Air fin Cooled Heat Exchanger Parts.



To Assure Reliability for Patronage

경남정공은 보다 나은 기술력으로 고객에게 만족을  
드리는 기업이 될 것입니다.



# Power Plants Components

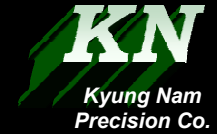
- **Generator parts**
  - Fan Blade, Coil & Pole Wedge
- **Gas Turbine Parts**
  - Seal Plate, U-support(Combustor - Hastelloy – X)
- **Hydro Power Parts**
  - Pole End Plate, Pump Turbine Distributor Assembly Parts & Runner Blade
- **Wind Power Parts**
  - Torque reaction linkage Sub assembly, Main Bearing Cover.





To Assure Reliability for Patronage

경남정공은 보다 나은 기술력으로 고객에게 만족을 드리는 기업이 될 것입니다.



# Generator Parts

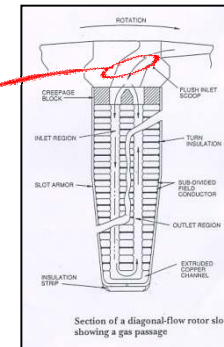
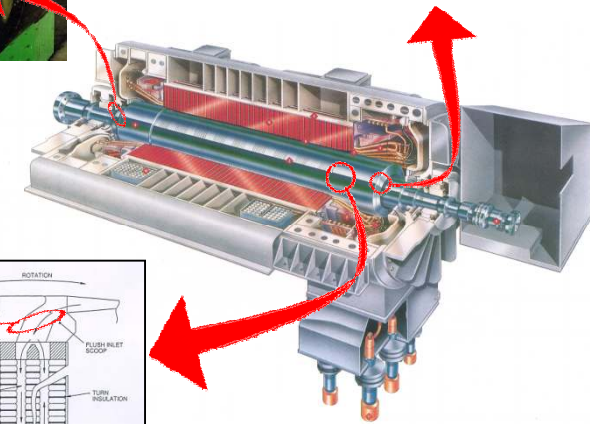
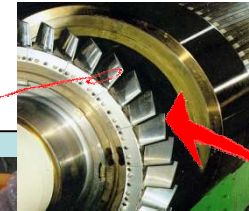
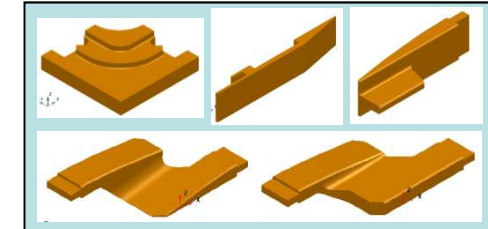
## ▶ Fan Blade



## ▶ Coil / Pole Wedge



## ▶ Gusset, Connector



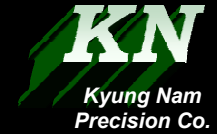
**Doosan :**  
**GE Sourcing 7FH2 & 324,**  
**Ha-Dong #7,8 / Kori #2 /**  
**Shinkori#1,2 /**  
**Shinwolsung#1,2**  
**Power Plant Project**



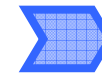
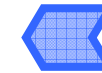
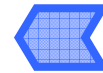
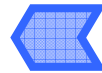
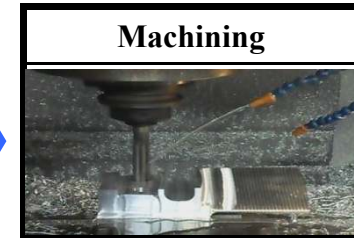
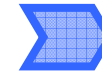
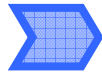


To Assure Reliability for Patronage

경남정공은 보다 나은 기술력으로 고객에게 만족을 드리는 기업이 될 것입니다.



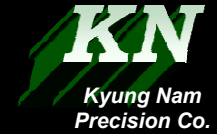
## Fan Blade MFG Map





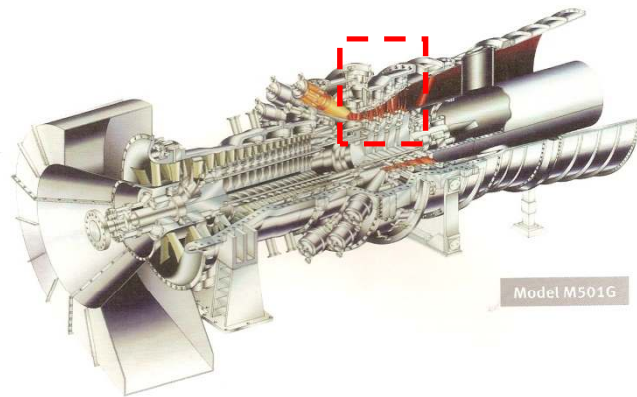
To Assure Reliability for Patronage

경남정공은 보다 나은 기술력으로 고객에게 만족을 드리는 기업이 될 것입니다.

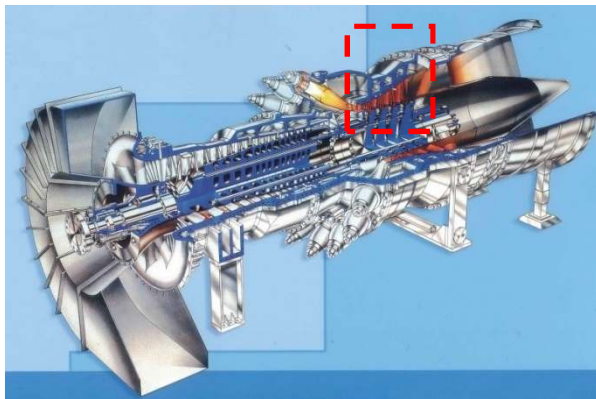


# Gas Turbine Parts

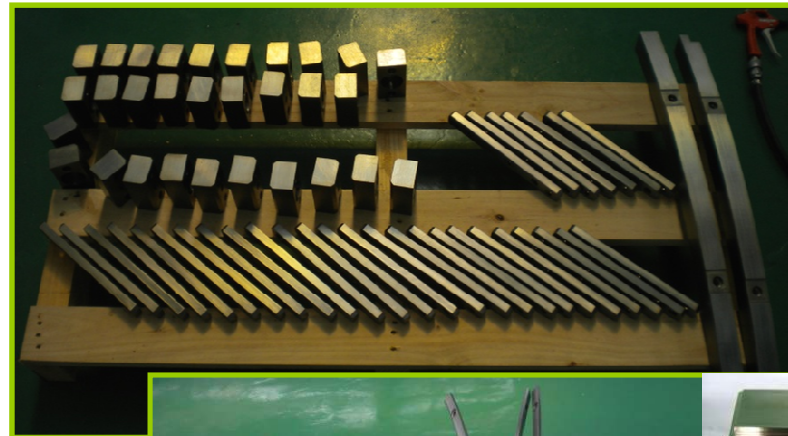
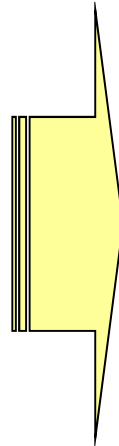
## ▶ LTSA #1(501G Type), Yeong-wol #1/2/3(501F Type) Seal Plate Part



Doosan : 501G Type



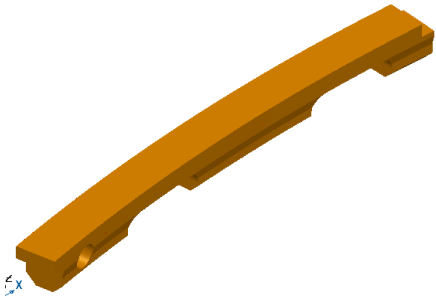
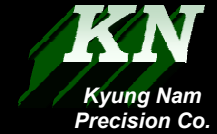
Doosan : 501F Type



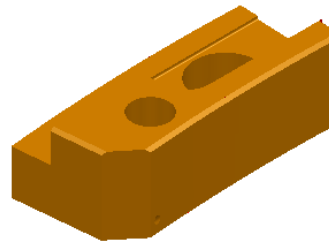


## To Assure Reliability for Patronage

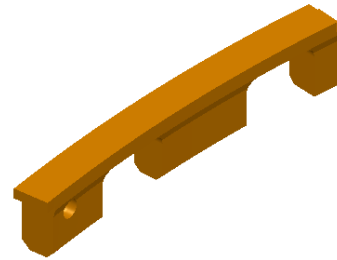
경남정공은 보다 나은 기술력으로 고객에게 만족을 드리는 기업이 될 것입니다.



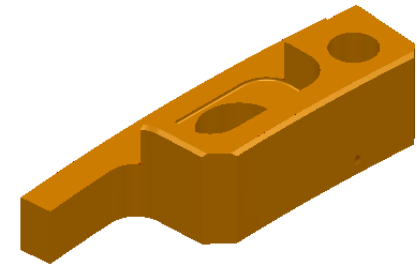
Block  
(SNCM625-QT)



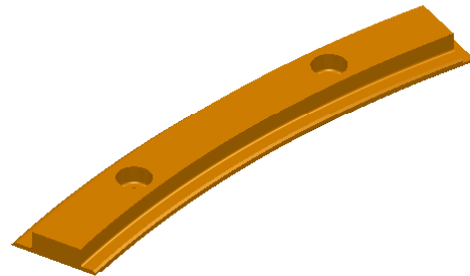
Block  
(SNCM625-QT)



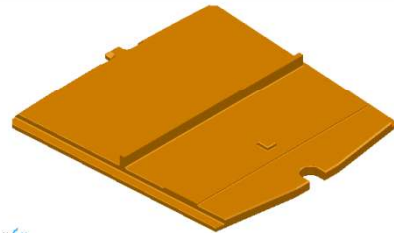
Block  
(SNCM625-QT)



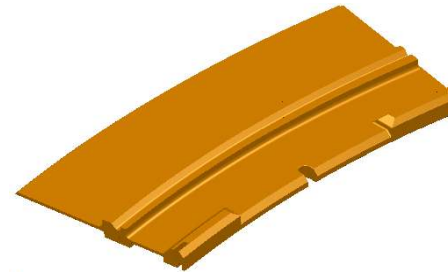
SUS Plate  
(SUS304)



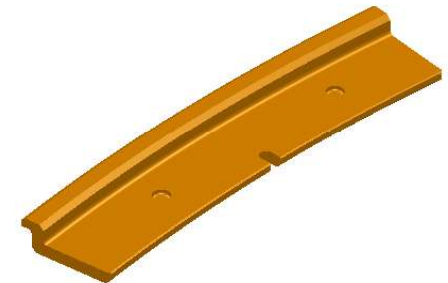
Baffle Seal  
(SUS310S)



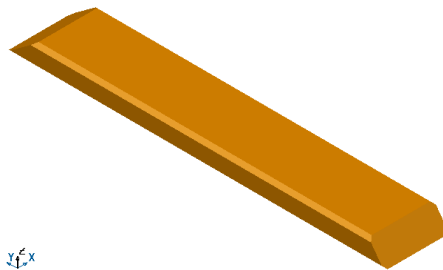
Seal Plate  
(Inconel X-750)



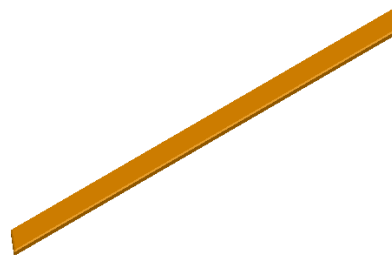
Seal Plate  
(Inconel X-750)



Seal Plate  
(Inconel X-750)



Seal Plate  
(Hastelloy-X)



Seal Plate  
(Hastelloy-X)



To Assure Reliability for Patronage

경남정공은 보다 나은 기술력으로 고객에게 만족을 드리는 기업이 될 것입니다.



# Gas Turbine Parts

## ▶ Impingement Plate (Localization)

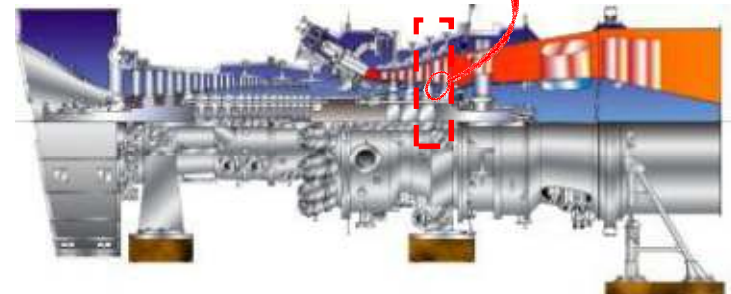
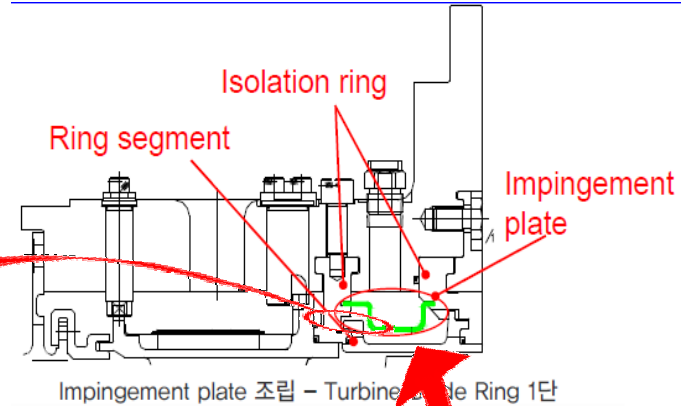


SUS321  
(SUS304)

## ▶ U-SUPPORT (Localization)



U-SUPPORT  
(Hastelloy-X)





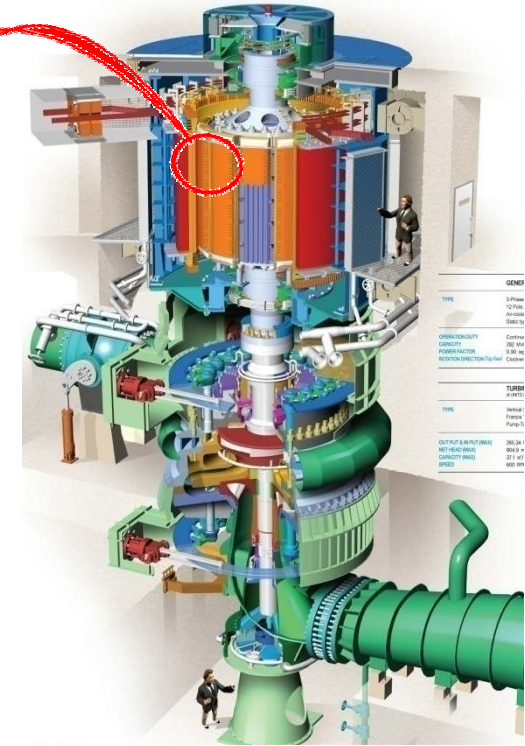
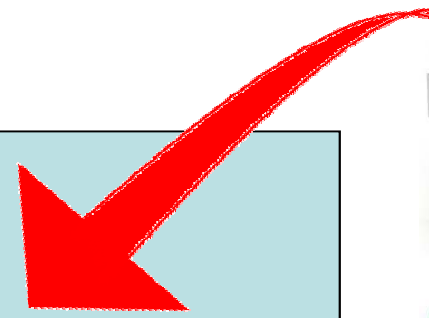
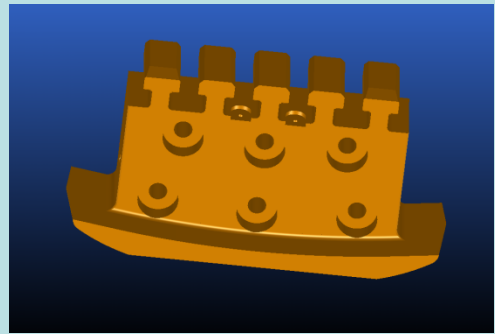


To Assure Reliability for Patronage

경남정공은 보다 나은 기술력으로 고객에게 만족을 드리는 기업이 될 것입니다.

# Hydro Power Parts

## ▶ Generator : Pole End Plate



GENES	
TYPE	3-Phase Cylindrical Air-cooled Synchronous
OPERATION MODE	Continuous
GENERATED POWER FACTOR	0.85 - 0.95
ROTATION DIRECTION	Reversible
TURBINE	
TYPE	Vertical Francis Pump-Turbine
OUTPUT & IN PUT (MW)	265.24 / 1
NET HEAD (M)	84.2
CAPACITY (MW)	21.7 MW
WIND	400 RPM

**Doosan :  
Ye-Cheon  
Hydro Power Plant  
Project**



To Assure Reliability for Patronage

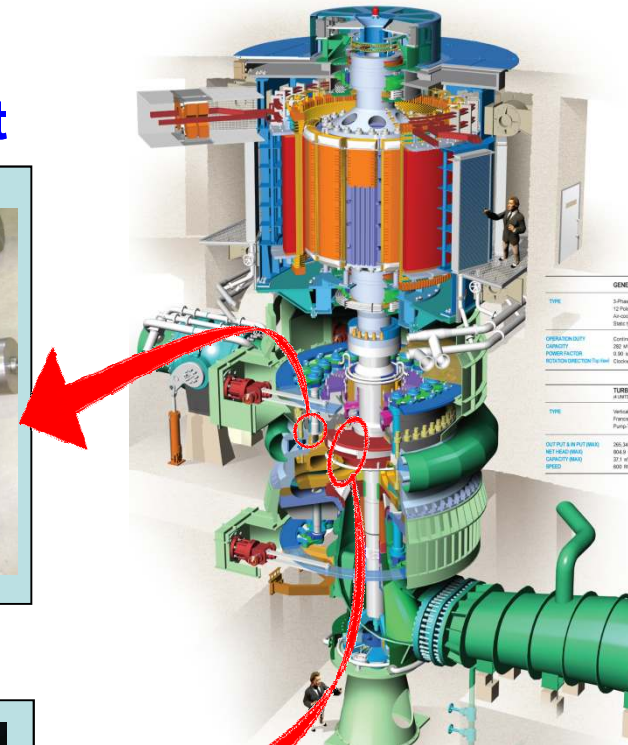
경남정공은 보다 나은 기술력으로 고객에게 만족을 드리는 기업이 될 것입니다.

# Hydro Power Parts

## ▶ Pump Turbine Distributor Assembly Part



## ▶ Runner Blade



Doosan :  
Ye-Cheon, yang yang  
Hydro Power Plant  
Project



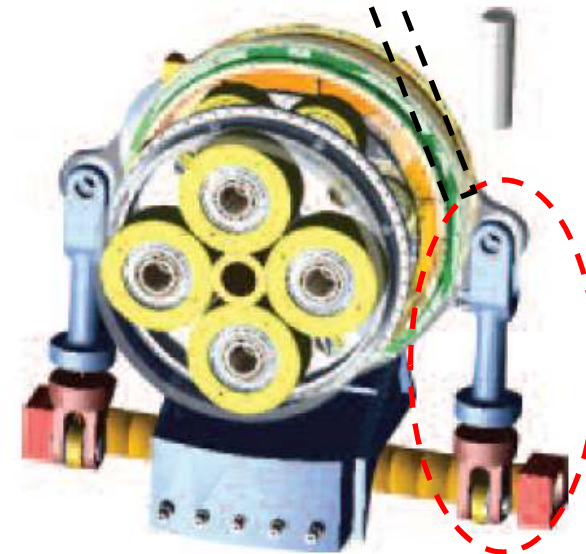


To Assure Reliability for Patronage

경남정공은 보다 나은 기술력으로 고객에게 만족을 드리는 기업이 될 것입니다.

## Wind Power Parts

### ▶ Torque reaction linkage Sub assembly

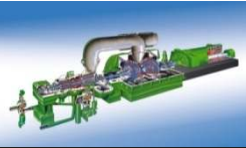


**\*Use: Support of reaction of the increase  
in the speed**

**\*Material:**

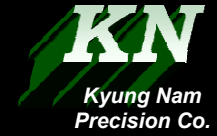
G18NiMoCr3-6,GS20NiMoCr3-7,SF440A,SM490C & etc.

**\*Performance : Doosan WinDS3000 #1~30**

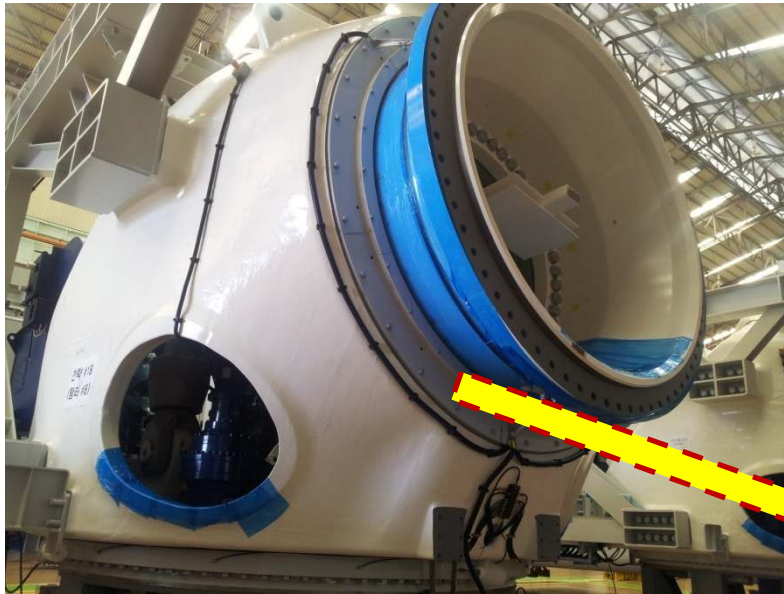


To Assure Reliability for Patronage

경남정공은 보다 나은 기술력으로 고객에게 만족을 드리는 기업이 될 것입니다.



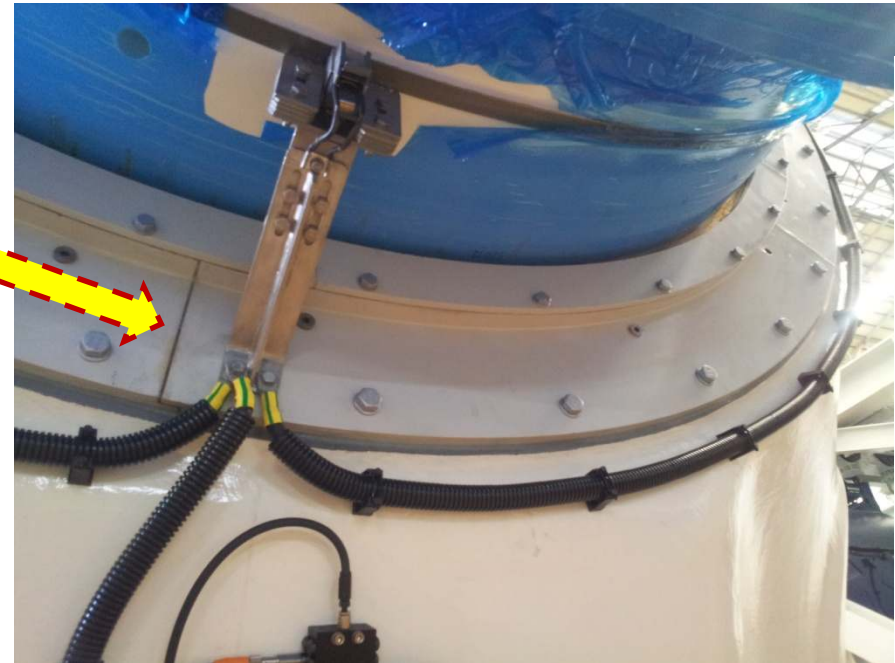
## Wind Power Parts



### ▶ Main bearing cover

Material : SS400

Doosan WinDS3000 #1~30





To Assure Reliability for Patronage

경남정공은 보다 나은 기술력으로 고객에게 만족을  
드리는 기업이 될 것입니다.

**KN**  
Kyung Nam  
Precision Co.

# Industrial Machinery Parts

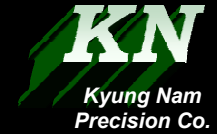
- Fittings
- Variable Machinery Parts (Offshore plant parts)





To Assure Reliability for Patronage

경남정공은 보다 나은 기술력으로 고객에게 만족을 드리는 기업이 될 것입니다.



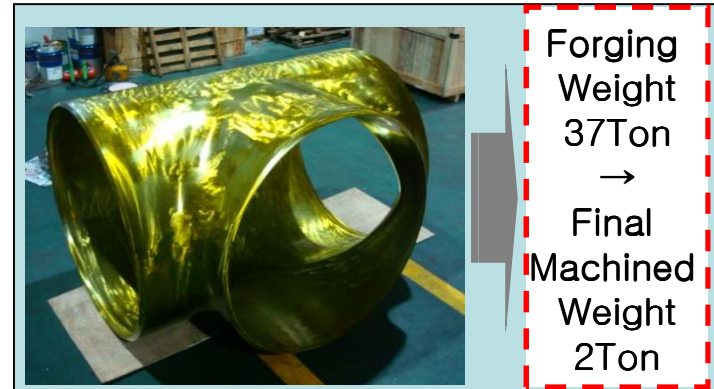
# Fittings

## ▶ Elbow



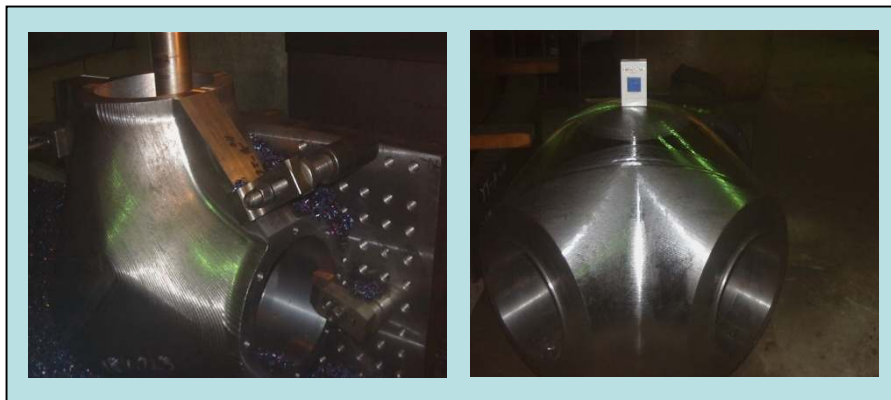
Doosan : Yeongheung Thermal Power Plant Project

## ▶ Tee

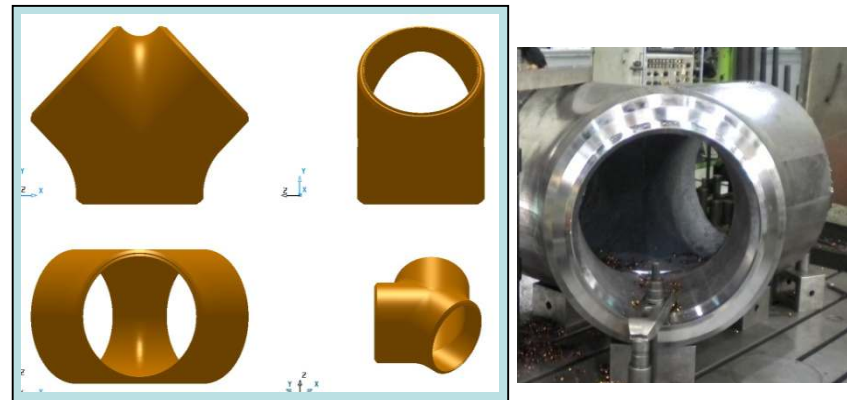


Forging Weight 37Ton  
→  
Final Machined Weight 2Ton

## ▶ Fitting (Wye type)



Doosan : GE Sourcing D11 Power Plant Project  
(Material : A182 F91)



M company : d'600, d'1000  
(Material : A182 F91) , Forging Weight 20Ton



To Assure Reliability for Patronage

경남정공은 보다 나은 기술력으로 고객에게 만족을  
드리는 기업이 될 것입니다.

**KN**  
Kyung Nam  
Precision Co.

## Variable Machinery Parts

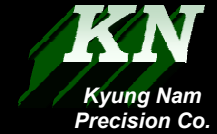
### ▶ OFF SHORE PLANT : BOP DOOR





To Assure Reliability for Patronage

경남정공은 보다 나은 기술력으로 고객에게 만족을 드리는 기업이 될 것입니다.



## Variable Machinery Parts

### ▶ Miter Nozzle



### ▶ Flange(Head / Shell type)



### ▶ Connecting Rod : 30MC ~ 98MC

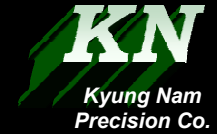






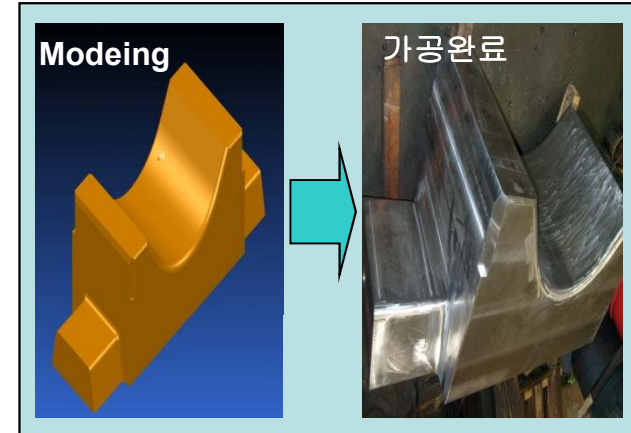
To Assure Reliability for Patronage

경남정공은 보다 나은 기술력으로 고객에게 만족을 드리는 기업이 될 것입니다.



# Variable Machinery Parts

## ▶ Column Nut(15,000Ton Press Part)



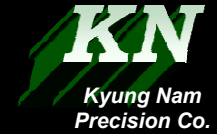
## ▶ Die Press



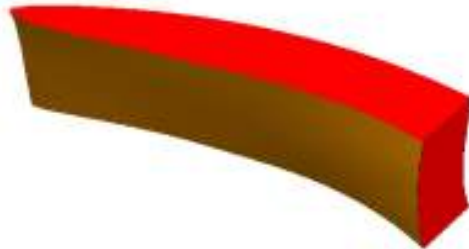


To Assure Reliability for Patronage

경남정공은 보다 나은 기술력으로 고객에게 만족을 드리는 기업이 될 것입니다.



# Variable Machinery Parts



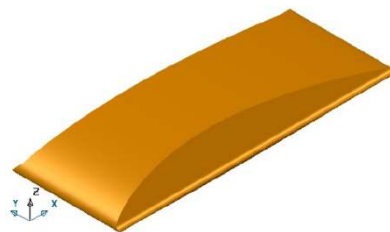
Return channel



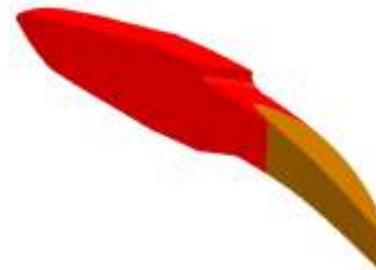
Generator Cover Segment



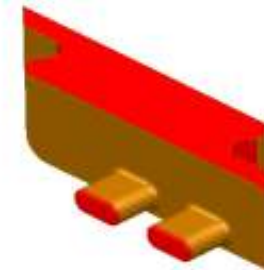
Guide Vane



Stay Ring Stay Vane



Stay Ring Blend Vane



Generator Cover Individual



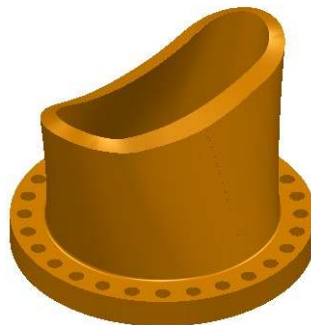
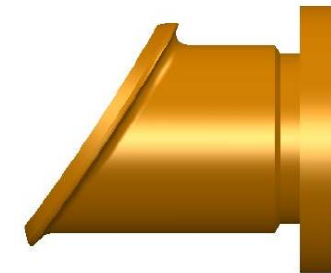
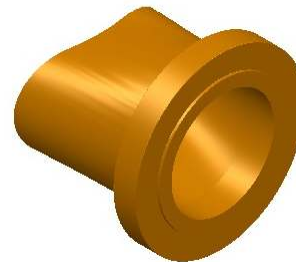
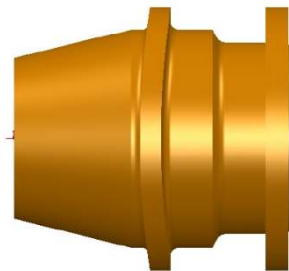
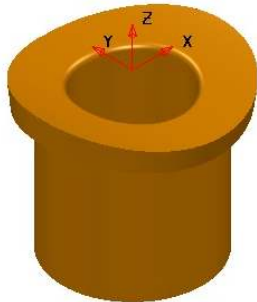
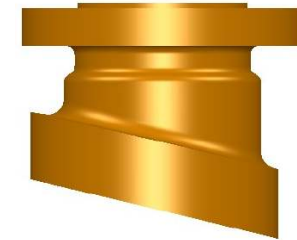
To Assure Reliability for Patronage

경남정공은 보다 나은 기술력으로 고객에게 만족을 드리는 기업이 될 것입니다.



# Variable Machinery Parts

Special Fitting(Large)  
Material Weight : 3.0Ton ~ 37Ton





To Assure Reliability for Patronage

경남정공은 보다 나은 기술력으로 고객에게 만족을  
드리는 기업이 될 것입니다.

**KN**  
Kyung Nam  
Precision Co.

# Air Cooler-Heat Exchanger Parts

- Swage nozzle



To Assure Reliability for Patronage

경남정공은 보다 나은 기술력으로 고객에게 만족을 드리는 기업이 되겠습니다.



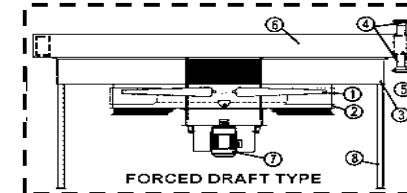
# Air Cooler-Heat Exchanger Parts

## ▶ Swaged Nozzle ( Patent License No.0463717)

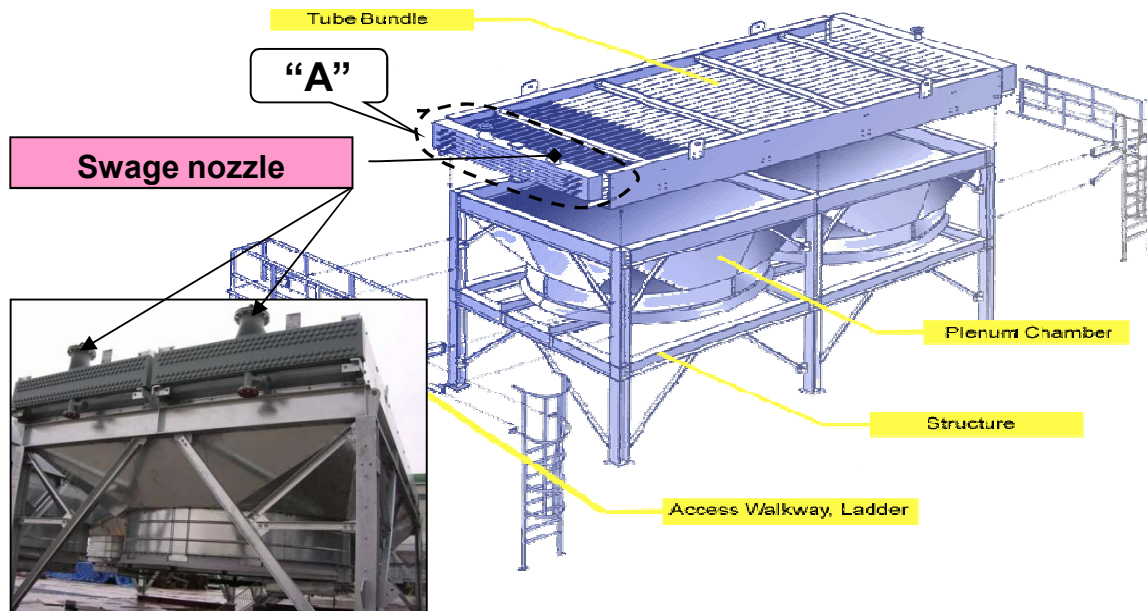
### Swage (Transition) Nozzle Application of Heat Exchanger

- 1. Application Type : Air Fin Cooled
- 2. Application Part : Swage Nozzle
- 3. Specification : 6" ~ 14"

#### ◆ Swage Nozzle in detail



- |                      |             |                   |
|----------------------|-------------|-------------------|
| 1. Fan               | 2. Fan ring | 3. Plenum chamber |
| 4. Nozzle            | 5. Header   | 6. Tube bundle    |
| 7. Fan Driver(Motor) | 8. Column   |                   |







To Assure Reliability for Patronage

경남정공은 보다 나은 기술력으로 고객에게 만족을 드리는 기업이 되겠습니다.



# Air Cooler-Heat Exchanger Parts

▶ Size : 6,8,10,12,14 inch

KYUNG NAM PRECISION		SWAGE (TRANSITION) NOZZLE STANDARD (METRIC)			DWG NO.	KND-14-R4	
SIZE : 14" (OD : 355.6)		PIPE SCH	SCH 60	SCH 80	SCH 100	PAGE	1/1
			15.09	19.05	23.83	ISSUE DATE	2007.09.01
S I Z E	B	A	C	D	thickness	remarks	N O T E
	200	325.4	505	180	15.09		
	200	317.6	480	180	19.05		
	200	307.9	455	180	23.8		
<b>MATERIAL</b>							
CARBON STEEL PIPE		<input type="checkbox"/> SA106 Gr.B		<input type="checkbox"/> SA333 Gr.6			
STAINLESS STEEL PIPE		<input type="checkbox"/> SA312 TP304		<input type="checkbox"/> SA312 TP304L		<input type="checkbox"/> SA312 TP316 <input type="checkbox"/> SA312 TP316L <input type="checkbox"/> DUPLEX	
INCOLOY		<input type="checkbox"/> SB-423					

## ◆PT(Liquid Penetrate Test)



< #1 After sprinkling the penetrate >



< #2 After PT check >

Top	Side
Each Size	
Overview	Anticorrosive





To Assure Reliability for Patronage

경남정공은 보다 나은 기술력으로 고객에게 만족을  
드리는 기업이 되겠습니다.



## Contact Information

- ▶ **Company Name:** Kyung Nam Precision Co.
- ▶ **Address:** #720-17, Hakjang-Dong, Sasang-Gu, Busan, South Korea
- ▶ **Tel. :** +82-51-325-3722 **Fax:** +82-51-325-3722
- ▶ **Home Page:** [www.knpco.kr](http://www.knpco.kr)

- ▶ **Contact Person**

**Tae Ho Lee (Vice President)**

**Tel:+82-70-4913-8562, Mp: +82-10-3746-6728**

**E-mail: [knmold@chol.com](mailto:knmold@chol.com) / [thpara@daum.net](mailto:thpara@daum.net)**

**Jamie Park (Sales Manager)**

**Tel:+82-70-4913-8569, Mp: +82-10-4183-2431**

**E-mail: [knmold@chol.com](mailto:knmold@chol.com) / [jamiemark33@korea.com](mailto:jamiemark33@korea.com)**