

Stamping Nail Art

The KONAD Stamping Nail Art is the first of its kind to be developed by KONAD and is considered as one of the most amazing inventions in the history of the business of beauty.

Anyone, including amateurs, can easily use the stamping method anywhere for beautiful nail art without spending a great amount of time and money.



Stamping Nail Art's essential items

1. **Stamp** : used to stamp a pattern by scraping the image plate and then moving it as is on the nail.
2. **Scraper** : used to scrape patterns on the image plate with a special polish applied.
3. **Image plate** : stainless steel image plate with beautiful patterns engraved.
4. **Special polish** : used to paint long-lasting, fast-setting patterns of high clarity with color formation that has viscosity five times higher than normal products from the image plate.
5. **Special top coat** : top coat exclusive for stamping nail art.

Why do we have to use the special top coat exclusive for Stamping nail art?

1. It preserves the pattern (if you use a normal top coat, the patterns can be smudged).
2. The Stamping nail art lasts longer.
3. High-gloss effect.
4. Add synergy to the colors, making the colors look more vivid compared to when not applied with the top coat.

What are the greatest advantages of using Stamping Nail Art?

1. Applicability : one can use diverse colors and patterns, as well as arrange them in different ferent positions for each application to become unique.
2. Creativity : allows one to create completely different patterns with a variety of colors using diverse methods other than just the original patterns commonly available.
3. Economical : for semipermanent use so it allows one to save on time, effort, and cost.
4. Artistry : can decorate nails with detailed patterns that are impossible to draw by hand, making it look professionally made.
5. Usage : anyone can easily create nail art anywhere.

KONAD STAMPING NAIL ART

EASY INSTRUCTIONS

Do all steps as quickly as possible and you will get perfect stamping nail art.



- Step 1.** Apply polish on the nail and let it dry.
(Before stamping nail art on gel nail, clean uncured gel with cleanser after curing.)
- Step 2.** Apply KONAD special nail polish on the top of the desired image in plate.
(For Stamping Nail Art, KONAD Special Polish must be used only.)
- Step 3.** Make a scraper leaned over 45 degrees and scrape excessive polish off quickly and strongly from the inside to outside.
- Step 4.** Before the image dries, press softly the desired image with a gentle rolling. (Left ▶ Right or Right ▶ Left)
- Step 5.** Check the image moved onto Stamp.
- Step 6.** Press moved image onto your nail with a gentle rolling. (Left ▶ Right or Right ▶ Left)
- Step 7.** Apply top coat. It helps long lasting image and color on your nail.
(Curing with gel top coat if you stamp image on gel nail.)
- Step 8.** Delicate Stamping Completed!

Many Usages

- The images will last for a longer time if a top coat is applied.
- The images can be stamped onto many different objects, including cell phones and accessories.
- To make pastel colors, mix white and other colors together.
- Enjoy expressing your creativity with KONAD!

REQUIRED PRODUCT

1 STAMP & SCRAPER

- 1-1 Stamp & Scraper Set
1 Stamp, 1 Scraper
- 1-2 Double Side Stamp Set
1 Double Side Stamp, 1 Scraper
- 1-3 Multi Stamp
1 Multi Stamp with Scraper



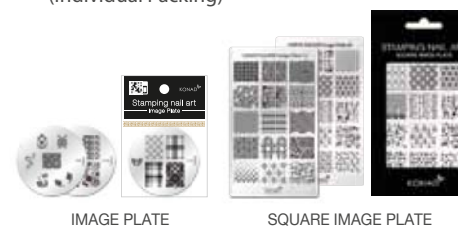
2 SPECIAL NAIL POLISH & SPECIAL TOP COAT

(Individual Packing)

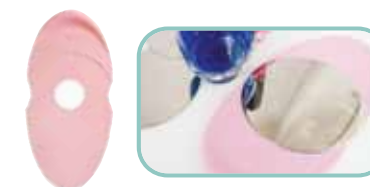


3 IMAGE PLATE

(Individual Packing)



4 IMAGE PLATE HOLDER



STAMPING NAIL ART CLEAN PAD SET

Turn the sponge over to reuse Hold the dent on the side for convenient use.

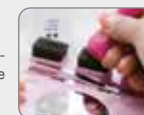


Apply moderate amount (10 drops) of remover on sponge. (Recommend to use KONAD Remover)
It is very important to apply moderate amount (10 drops) for the best effect.



Clean Image plate

Soak nail remover in sponge, use tweezers to pick up and wipe out the image plate to clean.



Clean Stamp

Wipe used stamp on the saturated sponge by nail remover.

Clean Scraper

Wipe used scraper gently on the sponge. Turn the sponge over to reuse.

KONAD STAMPING KIT



PRO SALON KIT I

- 1. Demo Plate I (Total 268 Designs)
- 16. Special Nail Polishes(10ml)
 - : Blue / Sky Pearl / White(2pcs) / Black(2pcs) / Pink Pearl / Pastel Pink / Violet Pearl / Royal Purple / Dark Purple / Black Pearl / Wine Red Wine / Yellow / Dark Orange / Pastel Orange / Red / Green / Silver / Gold
- 9. Image Plate
 - : m37 / m38 / m39 / m40 / m41 / m42 / m43 / m44 / m45
- 1. Image Plate Holder
- 1. Double Side Stamp
- 1. Stamp
- 1. Scraper
- 1. Cuticle Remover
- 1. One Touch Empty Remover Bottle(185ml)
- 1. Acryl Stick(L)
- 1. Rhinestones(169pcs)
- 1. 2-way Shinning Buffer(Arch)
- 1. Glitter and Pallet
- 1. Design Emery Board
- 1. Shinning Nail Art Pen
- 1. Pusher
- 1. Nipper
- 1. Corrector Pen
- 1. Black Catalogue
- Sponges(Cover&Arts)

PRO SALON KIT II

- 1. Demo Plate II (Total 257 Designs)
- 16. Special Nail Polishes(11ml)
 - : White(2pcs) / Yellow / Pink Pearl / Pastel Pink / Dark Orange / Red / Green / Sky Pearl / Blue / Violet Pearl / Dark Purple / Royal Purple / Black Pearl / Silver / Gold
- 9. Image Plate
 - : m73 / m74 / m75 / m76 / m77 / m78 / m79 / m80 / m81
- 1. Top Coat(11ml)
- 1. Base Coat(11ml)
- 1. Glitter Top Coat(Gold 11ml)
- 1. Hardner
- 1. Image Plate Holder
- 1. Double Side Stamp
- 1. Stamp
- 1. Scraper
- 1. Cuticle Remover
- 1. One Touch Empty Remover Bottle(185ml)
- 1. Acryl Stick(L)
- 1. Rhinestones(169pcs)
- 1. 2-way Shinning Buffer(Arch)
- 1. Glitter and Pallet
- 1. Design Emery Board
- 1. Shinning Nail Art Pen
- 1. Pusher
- 1. Nipper
- 1. Corrector Pen
- 1. Black Catalogue
- Sponges(Cover&Arts)



CLASSIC COLLECTION I

- 10. Princess Special Polishes(12ml)
 - : Blue Pearl / Deep Jungle / Cool Red / Psyche Pink / Yellow / Gold Black / Violet Pearl / Dark Purple / White / Silver
- 12. Image Plates
 - : m3 / m12 / m20 / m26 / m36 / m39 / m45 / m51 / m53 / m55 / m57 / m59
- 1. Image Plate Holder
- 1. Double Side Stamp
- 2. Scraper
- 1. Top Coat(12ml)
- 1. Glitter Silver Top Coat
- 1. Acrylic Stick(S)
- 1. Rhinestones(169PCS)
- 1. 2way Shinning Buffer(Standard)
- 1. Design Emery Board
- 1. Tweezers



CLASSIC COLLECTION II

- 5. Princess Special Polishes(12ml)
 - : Deep Jungle / Cool Red / Gold Black / Yellow / White
- 12. Image Plates
 - : m20 / m36 / m45 / m51 / m53 / m57 / m59
- 1. Image Plate Holder
- 1. Double Side Stamp
- 2. Scraper
- 1. Top Coat(12ml)