

1450 / 1650 / 1850

MEGAFOLD

FOLDER-GLUERS



www.dgm-global.com

DGM CARTON
CONVERTING
EQUIPMENT

MEGAFOLD Folder-gluer

1450 / 1650 / 1850

HIGH SPEED AUTOMATIC FOLDER GLUER

MEGAFOLD Perfect solution to work with medium and large sized boxes in the heavy packaging industry. With high productivity, it offers the flexibility to run thin solid board to thick corrugated carton.

- Modular design allows different configurations, to meet customer's needs.
- Wide range of accessories that allows to run thousands of designs.
- Fast, steady and precise machine, easy to set up and operate.
- All sections with independent servo-motor driving system.
- Motorized carrier movement with high precision linear guides.
- Memory function to save repetitive jobs.



MODELS

MEGAFOLD C

Without pre-folding section suitable for straight-line boxes.

MEGAFOLD AC

Without pre-folding section suitable for straight-line, crash-lock bottom & double wall boxes.

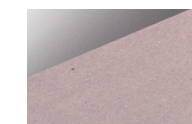
MEGAFOLD PC

Suitable for straight-line, crash-lock bottom & double wall boxes.

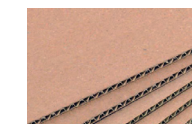
MEGAFOLD SL

Suitable for straight-line, crash-lock bottom, double wall, 4 & 6-corner boxes.

MATERIALS

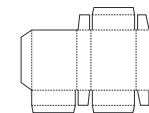


Carton board

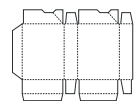


Corrugated board

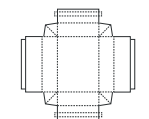
BOXES



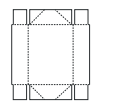
Straight line



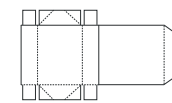
Lock - bottom box



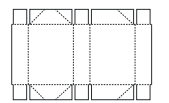
Double - wall Box



4 corner Box



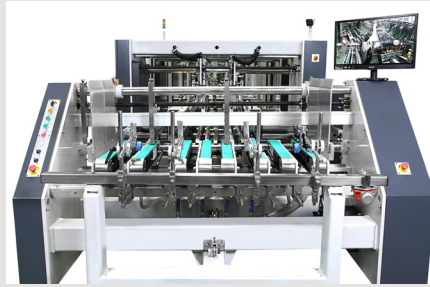
4 corner Box with Lid



6 - corner box



COMPONENTS FOR ALL MODELS



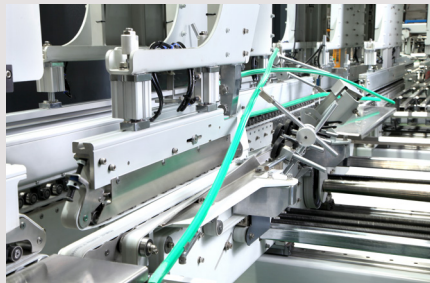
1 Feeder section

- Friction feeder. Independently driven by servo-motor.
- Adjustable electronic pile vibrator.
- Lateral feed gates fully adjustable to the width of the blank.
- 3 adjustable front feed knives with bogies and 3 additional smaller sets.
- 6/8/8 feeder belts including 4 drilled belts for suction function.
- Control panel with touchscreen and buttons for all operations.
- Extendable rear pile support for long boxes.



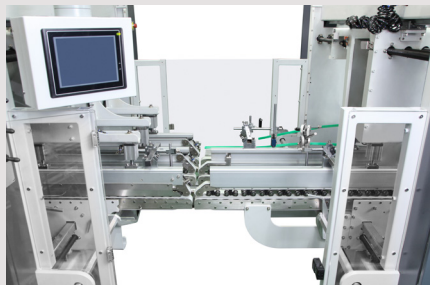
2 Side register section

- Independent section that registers the blank to one side ensuring a perfect parallelism before entering the pre-folding or gluing sections.
- Independently driven by servo-motor.
- Possibility to register on any side of the machine.
- Fast and easy setup.



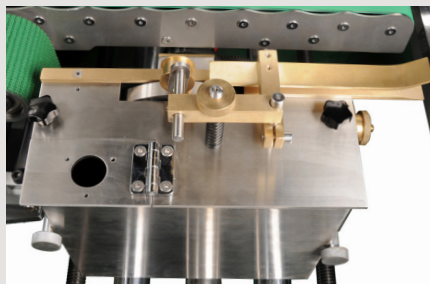
3 Pre-folding section

- Independently driven by servo-motor.
- Left hand glue flap pre-folder up to 180°.
- Third crease line pre-folder up to 135°.
- 1st and 3rd crease openers.



4 Crash lock bottom section

- Independently driven by servo-motor.
- Complete set of folding hooks and helixes for smooth and accurate folding of front flaps.
- Adjustable hook tension.
- Set of accessories for "B" lock bottom.
- Fast and easy setup.



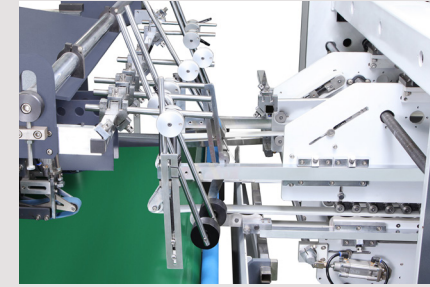
5 Gluing section

- Optional Electronic upper gluing system, cold glue with 3 guns.
- Two lower (left and right) gluing tanks.
- Easy to remove and clean.



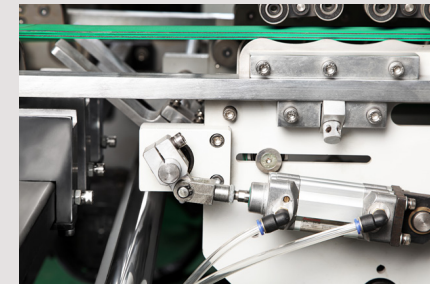
6 Folding and Closing section

- Independently driven by servo-motor.
- Smooth and accurate folding of 2nd and 4th creases.
- Outer folding belts adjustable up to 180° with variable speed controlled by two independent servo-motors, L & R side.
- Three sets of upper & lower carriers with 34 mm upper, 50 mm lower and 100mm outer belts.
- Easy accessibility.
- Mini-box folding device.



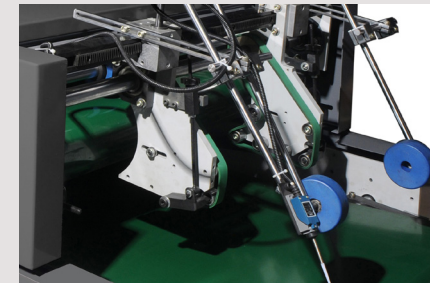
7 Transfer section

- Independently driven by servo-motor.
- Upper and lower drive mechanism for length adjustment.
- Allows a perfect understack or overstack stream of boxes.
- Equipped with automatic belt tension-adjusting system.
- Continuous and automatic box collection mechanism that ensures a neat transfer to the Press section, guaranteeing an aligned flow.
- Pneumatic squaring device for accurate closing of crash lock-bottom boxes.



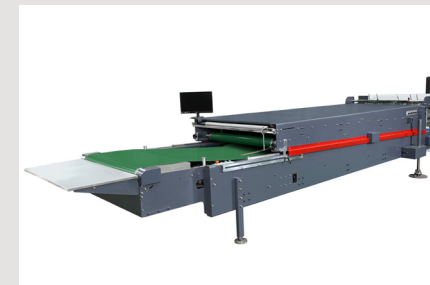
8 Squaring device in Transfer section

- Pneumatic squaring device in transfer section.
- Aluminum plates stop the box while the upper trombone belts correct any deviation on the closing. The box is released after correction.



9 Squaring device

- Motorized and pneumatic squaring device on press section. Two carriers with transport belts allow a perfect flow of boxes moving to the pressing station.
- Rear stack corrector, that allows to square the boxes while falling on the lower conveyor.



10 Press section

- Independently motorized pneumatic press section.
- Manual and Automatic mode (follow up).
- Upper section moves back and forward through a motorized system, allowing different box length.
- 6.5 meters total length with 4 meters of effective pressure.
- Pneumatic pressure regulation.



11 Back-folding device

- Motorized and untimed electronic back folding system with intelligent servo-motor technology.
- Two independent servo motors, one for each shaft.
- Versatile and easy to setup.



12 Scoring/creasing modules

- Independent scoring section driven by servo motors.
- Located right after Side-register section, before pre-folding section.
- Allows to make deeper scores if needed.

MEGAFOLD

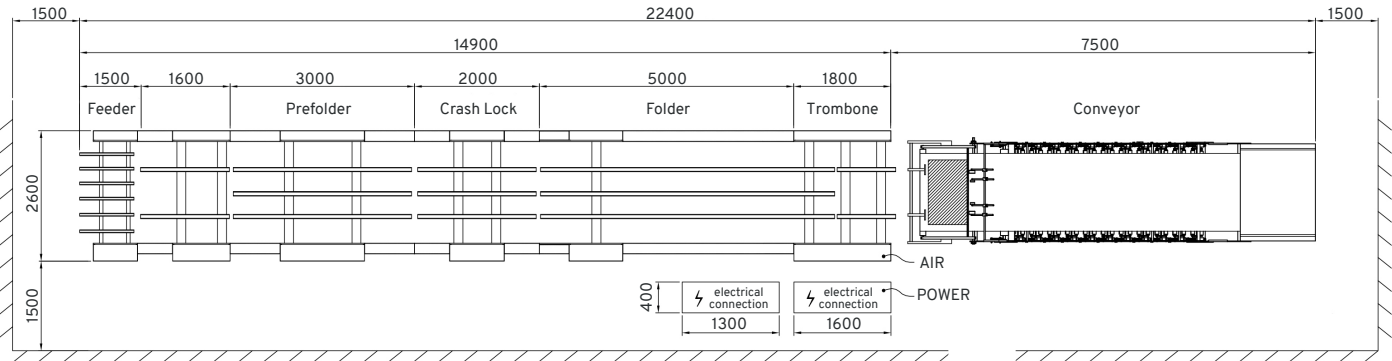
1450 / 1650 / 1850



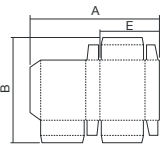
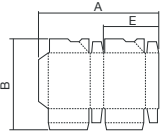
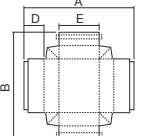
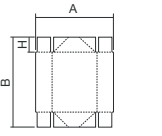
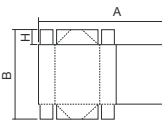
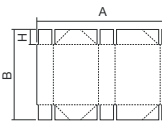
SPECIFICATIONS

MEGAFOLD	1450	1650	1850
Processed materials			
Carton board max.	1200 g/m ²	1200 g/m ²	1200 g/m ²
Corrugated flute type	E, C, B, AB 3 & 5 layers	E, C, B, AB 3 & 5 layers	E, C, B, AB 3 & 5 layers
Capability			
Speed max.	300 m/min	300 m/min	300 m/min
Inching speed	20 m/min	20 m/min	20 m/min
Thickness of folded box max.	20 mm	20 mm	20 mm
Blank width	290-1450 mm	290-1650 mm	290-1850 mm
Dimensions & weight	CACPCSL	CACPCSL	CACPCSL
Length	17.4 m19.4 m22.4 m22.4 m	17.4 m19.4 m22.4 m22.4 m	17.4 m19.4 m22.4 m22.4 m
Width	2.2 m2.2 m2.2 m2.2 m	2.4 m2.4 m2.4 m2.4 m	2.6 m2.6 m2.6 m2.6 m
Height	1.7 m1.7 m1.7 m1.7 m	2.0 m2.0 m2.0 m2.0 m	2.0 m2.0 m2.0 m2.0 m
Net Weight	12 Ton13.5 Ton14.5 Ton14.8 Ton	13 Ton14.5 Ton15.5 Ton15.8 Ton	15 Ton17 Ton18 Ton18.2 Ton
Installation			
Electrical connected load	40 kW45 kW50 kW56 kW	40 kW45 kW50 kW56 kW	40 kW45 kW50 kW56 kW
Compressed air	6 bar6 bar6 bar6 bar	6 bar6 bar6 bar6 bar	6 bar6 bar6 bar6 bar
Air compressor capacity	30m³/h30m³/h30m³/h30m³/h	30m³/h30m³/h30m³/h30m³/h	30m³/h30m³/h30m³/h30m³/h
Air tank capacity	155 L155 L155 L155 L	155 L155 L155 L155 L	155 L155 L155 L155 L

SCHEME MEGAFOLD



BOXES

	1450	1650	1850
 Straight line	A: 290 - 1450 mm B: 250 - 1200 mm E: 135 - 715 mm	A: 290 - 1650 mm B: 250 - 1200 mm E: 135 - 815 mm	A: 290 - 1850 mm B: 250 - 1200 mm E: 135 - 915 mm
 Lock - bottom	A: 290 - 1360 mm B: 300 - 1200 mm E: 135 - 665 mm	A: 290 - 1560 mm B: 300 - 1200 mm E: 135 - 770 mm	A: 290 - 1760 mm B: 300 - 1200 mm E: 135 - 870 mm
 Double - wall	A: 290 - 1450 mm B: 200 - 1200 mm D: 50 - 200 mm E: 135 - 1250 mm	A: 290 - 1650 mm B: 200 - 1200 mm D: 50 - 200 mm E: 135 - 1450 mm	A: 290 - 1850 mm B: 200 - 1200 mm D: 50 - 200 mm E: 135 - 1650 mm
 4 - corner	A: 230 - 1450 mm B: 220 - 1200 mm H: 35 - 150 mm	A: 230 - 1650 mm B: 220 - 1200 mm H: 35 - 150 mm	A: 230 - 1850 mm B: 220 - 1200 mm H: 35 - 150 mm
 4 - corner with Lid	A: 350 - 1300 mm B: 220 - 1200 mm H: 35 - 150 mm	A: 350 - 1500 mm B: 220 - 1200 mm H: 35 - 150 mm	A: 350 - 1700 mm B: 220 - 1200 mm H: 35 - 150 mm
 6 - corner	A: 350 - 1300 mm B: 220 - 1200 mm H: 35 - 150 mm	A: 350 - 1500 mm B: 220 - 1200 mm H: 35 - 150 mm	A: 350 - 1700 mm B: 220 - 1200 mm H: 35 - 150 mm

www.dgm-global.com

info@dgm-global.com

TEL (86) 0752-277 37 80
FAX (86) 0752-277 37 78

HuiHuan Industrial Area, Huizhou City,
Guangdong Province, China

Huizhou De Gang Machinery Co., Ltd

