

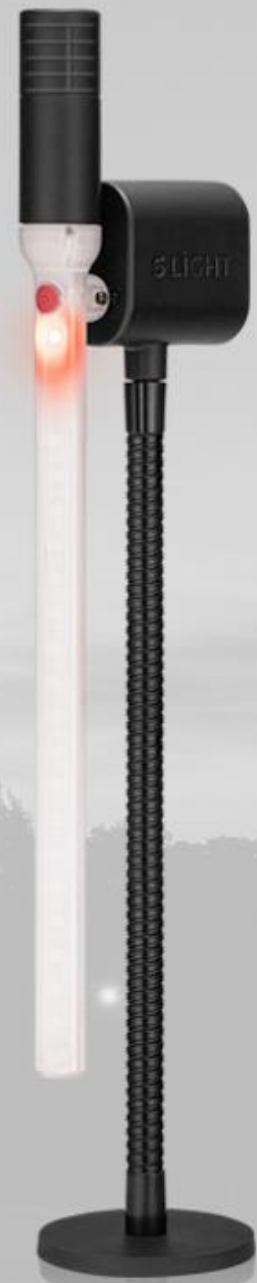
FROM **FUN** UP TO
SECURITY

MAKE PEOPLE
HAPPY & SAFE

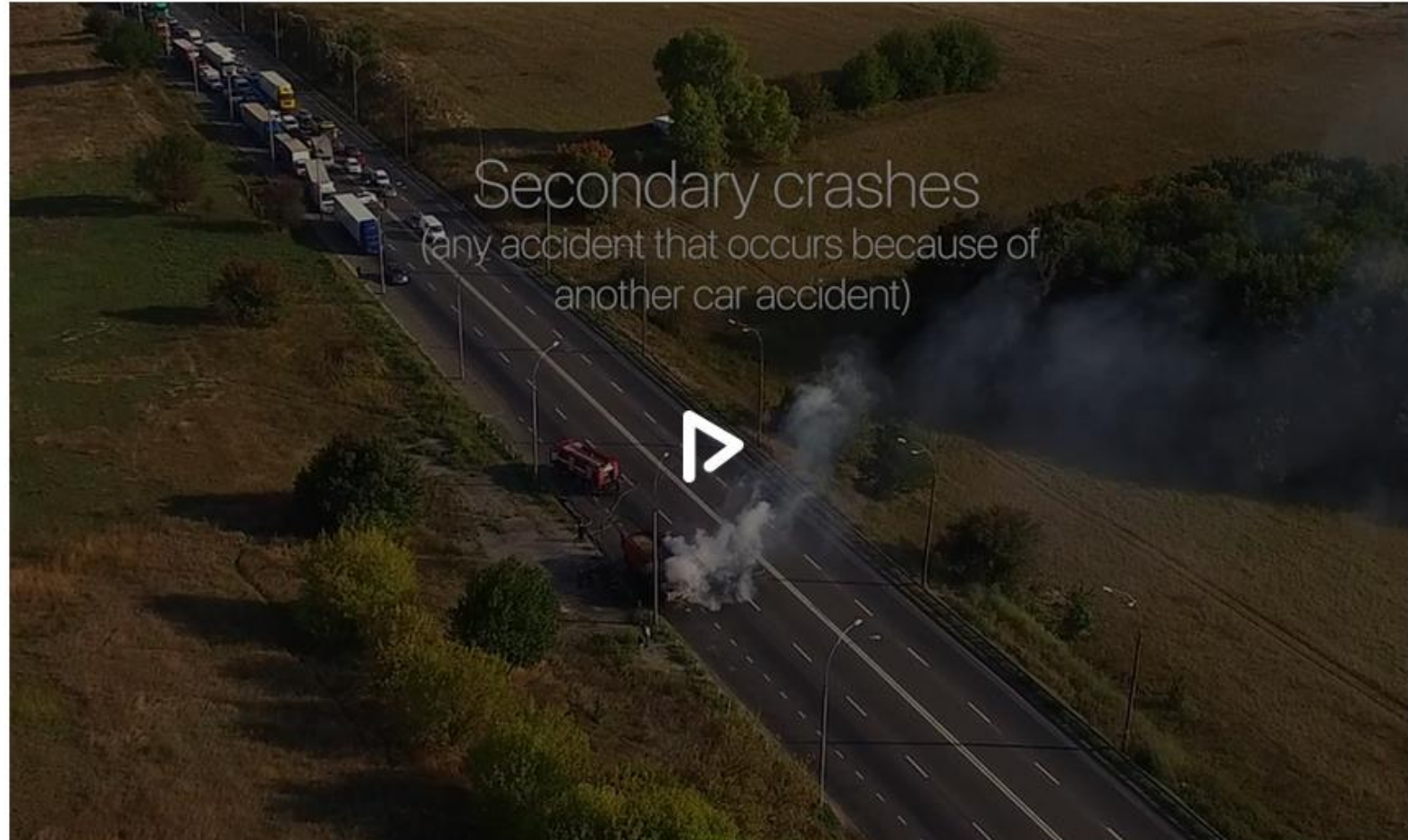
Most advanced Emergency Situation
Warning System

S·LIGHT **S**AFE **L**IGHT
ECURE
IGNAL

<http://www.slight.kr>



S·LIGHT Promotion Film



Secondary Accident

Did you know?



Duty to Remove Accident Vehicles from the Road

CCSA 40-6-279

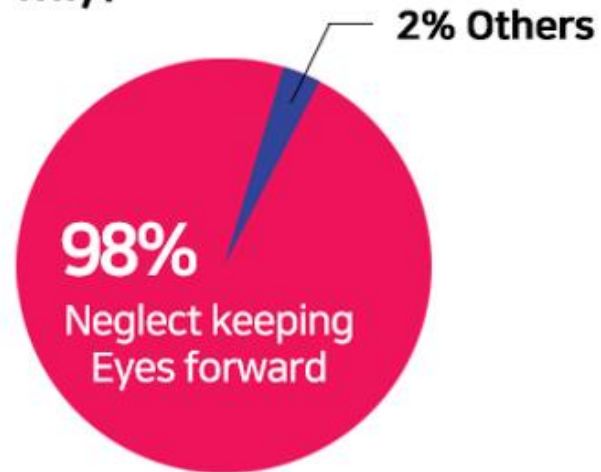
Following a traffic accident, (with no apparent serious personal injury or death) the drivers will remove their vehicles from the roadway onto the shoulder, emergency lane, median, or off the roadway (parking lot)

53 Death rate %

Death Accident



Why?



World most advance Emergency Situation Warning System on the road “S·LIGHT”

Secondary accident is most fatal hazard on the road to be solved.

Death rate by secondary accident is 53% and it means that the rest must be injured seriously.

69% of peoples are dead during the night time. And 98% of secondary accident occurred due to driver's fault such as neglect to keeping eyes forward.

So it is most important let following drivers to recognize the front emergency situation promptly and intuitively.

“S·LIGHT” is the best solution to prevent fatal secondary accident and save passenger's life.

Overview

Most advanced emergency situation warning system to following vehicles on the road by using afterimage affect of LED light which displays SOS, tripod and arrow symbol in the air by rotation.

Stick the magnetic bottom of **S·LiGHT** on the roof or top side of opened trunk of passenger car, side part of big truck & bus and then adjust the visible angle with flexible pole.

Power on **S·LiGHT** and escape from dangerous spot to prevent secondary accident.

60cm diameter of clear images made by high intensity red LED light makes prompt and intuitive warning to following vehicles.

S·LiGHT is innovative public interests products to decrease secondary accident for road traffic safety.



Where to use

S·LIGHT is must have safety item not only

Sudden car trouble.

Out of gas.

Minor collision.

Boat.

But also to prevent secondary accident on the road
which have extremely high death rate.



Car Trouble



Prevent Secondary
Accident



Out of Gas

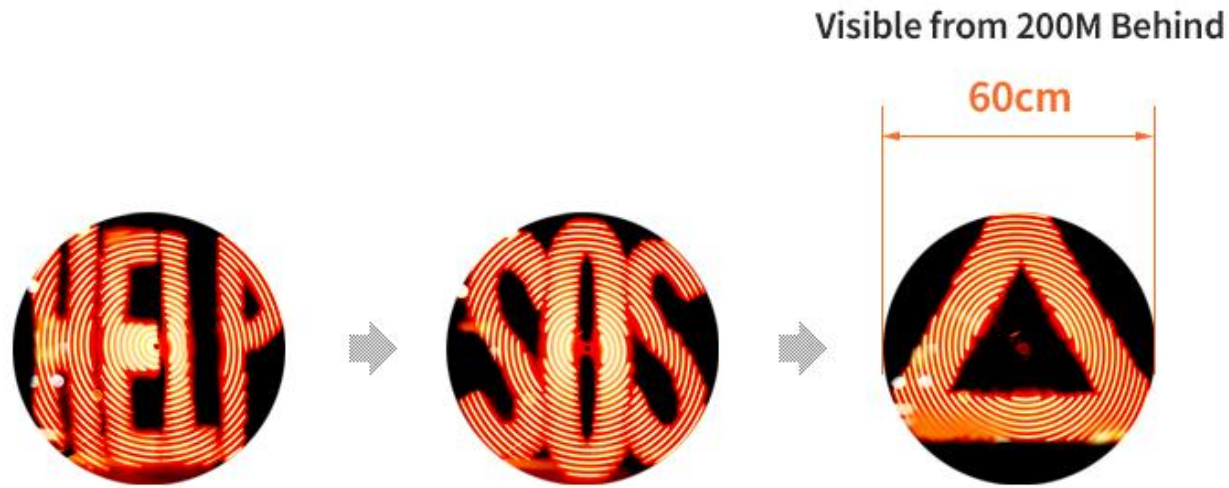


Minor Collision



Boat

Afterimage Effect



HELP, SOS and Warning Triangle Symbol by rotation



“S·LIGHT” displays HELP, SOS and Warning triangle symbol in the air by rotation and symbol can be changed as per customer’s request.

60cm diameter of red LED images makes prompt and intuitive warning to following drivers and it is visible from 200m behind.

Following driver can recognize the warning sign at driver’s eye level even current warning Triangle product stands on the road.

“S·LIGHT” is innovative public interests products to decrease secondary accident.

Feature



Waterproof



90 Minutes
Working Time



Magnetic Bottom



Flexible Pole

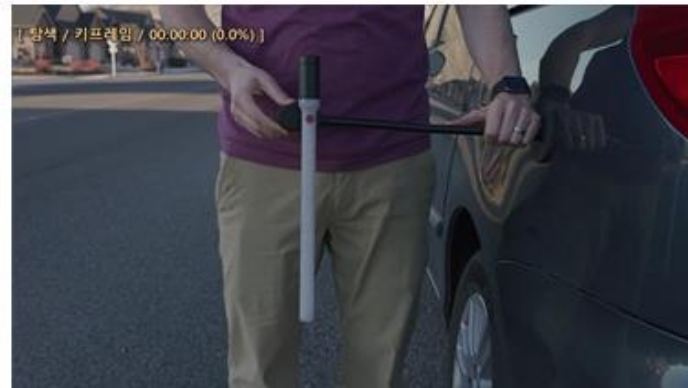
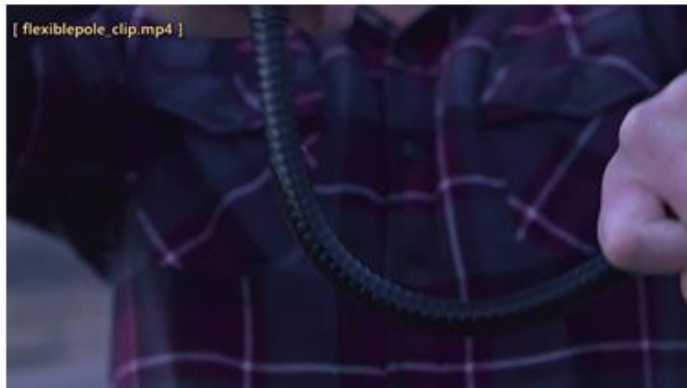


3 X AAA Battery Holder
(LED/Motor part Each)

Stick the **magnetic bottom** of S.Light on the opened trunk of passenger and side part of big truck & bus and then adjust the visible angle with **flexible pole**.

Power on “S·LIGHT” and escape from dangerous spot to secure passenger’s safety.

“S·LIGHT” guarantee **water proof** and works 90 minutes \pm 10% with **3XAAA batteries** which is the sufficient time to settle the problem on the road.



Daytime Reflective Warning Triangle - A

LED light is not seen clearly during the daytime due to sunlight.

Please warn to following drivers with 55cm diameter of warning triangle board during the daytime.

Warning triangle board is folded easily at small size and will be fixed with **S·LiGH**T device by plastic battery cover.

Please open the battery cover and insert it into center hall of warning triangle to fix it.

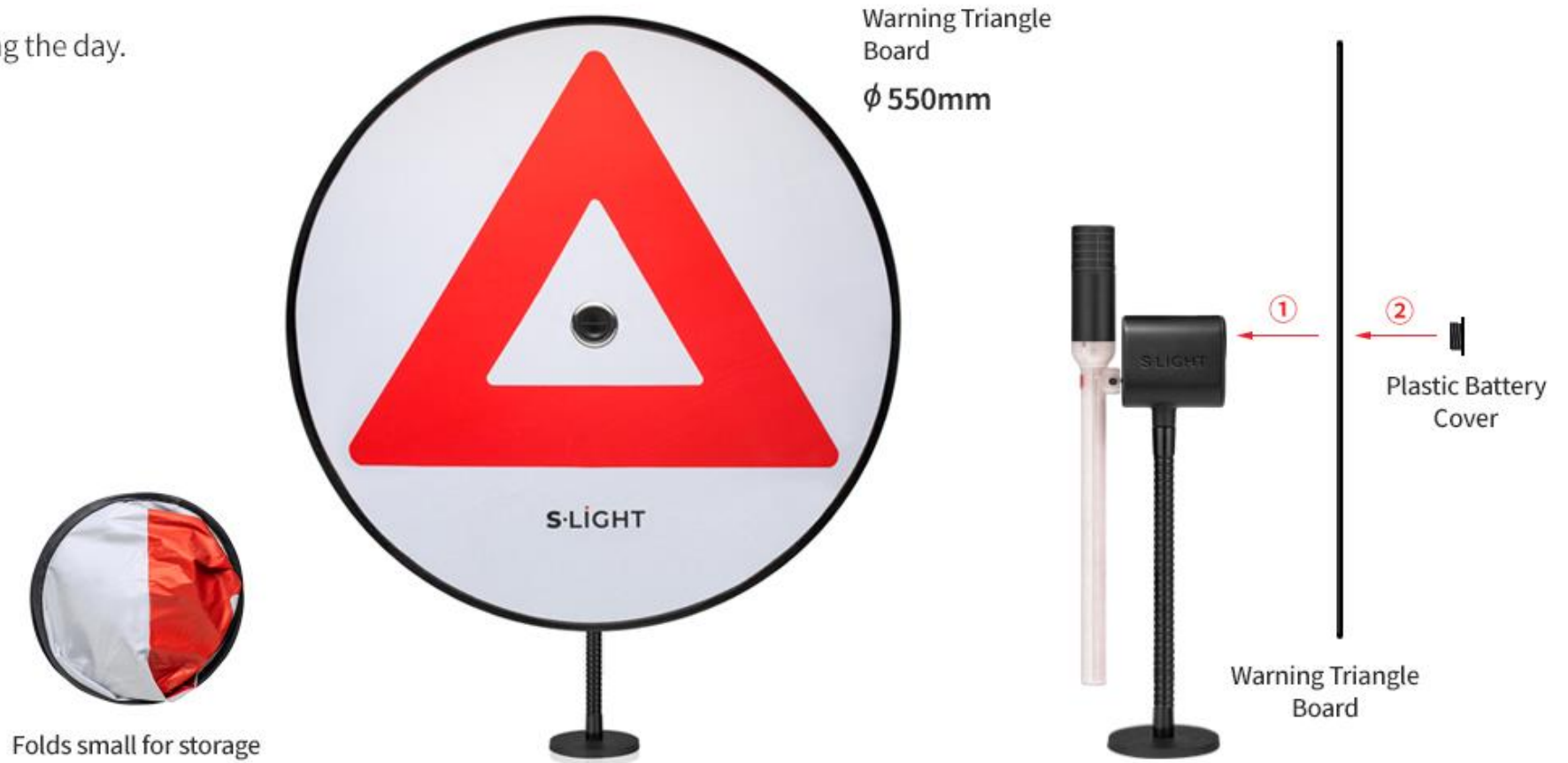
It is more efficient than current warning triangle since following driver can recognize the warning sign at driver's eye level.



Daytime Reflective Warning Triangle - B

Attach the warning triangle board to the **S·LiGHT** for easy visibility during the day.

This is much easier to see than cones or signs on the street.



Air Pressure Suction cup for non-metal surface

S·LIGHT on a non-metal surface like aluminum body, glass, plastic, or even wood.

Suction Cup Mounting that can hold up a 50kg (100 LBS) load.

More than enough for S·LIGHT in any weather.



3.5" Diameter

Ensure a secure mount
non-magnetic surface
with a 3.5" diameter suction cup

Guaranteed Suction

To fix the suction cup firmly to a surface,
pump the air stick several times until you cannot
see the red line indicator locator on the stick.



Protective Storage Case

We have designed a case specifically to store the **S·LiGHT**

It can live in your trunk, take up minimal space,
and keep the **S·LiGHT** at optimal quality, ensuring you're ready
for whatever comes your way.

A strong velcro strip will also be included to secure the case
in your trunk.



Velcro Strip



Attaching to
Back of Case



Manual

Battery insertion & Storage

1. Insert 3 X AAA battery with battery holder for each of LED part and motor part. (Picture 1)
2. Please pay attention to select correct + — electrode. (Picture 2)
3. Please store battery installed S·Light in your trunk with hard plastic case.
4. Fix the plastic case in your trunk by using both side adhesive velcro included. (Picture 3)
5. Considering natural discharge, please exchange the battery every 2-3 years.

How to Use

1. Take out S·LIGHT from the trunk and turn on red button on LED part. (Picture 4)
2. Fix the magnetic bottom on passenger car roof or side part of truck/bus.
Please fix it higher position to increase the visibility of following drivers.
3. Adjust the visible angle to following drivers with flixible pole.
4. Turn on grey power button on motor part. (Picture 5)
5. Please be careful not to be hit by turning LED bar when you turn on the motor button.
6. S·LIGHT works 90 minutes $\pm 10\%$ based on continuous working with new battery.
7. SOS, HELP, Warning triangle signals are displayed by rotation.
8. During the daytime LED light is not visible well and please use the included warning triangle panel.
9. Please fix the warning triangle panel with motot battery cover. (Picture 6)
10. Warning triangle panel to be folded small size for storage in hard plastic case.
11. Air pressure suction for non-steel surface attachment(Optional separte purchase product):
Please separate magnetic bottom and replace to air pressure suction and press the lever several times till you can not see the line on lever. (Picture 7)
Please push the bump on suction for detachment. (Picture 8)

Detachment after use

1. Bottom is made of strong magnetic for safe attachment on windy day and rubber coated surface protect your car body. Even though, please careful when you detach the S·LIGHT.
2. Please lean the magnetic bottom and detach the one side part in advance for easy and safe detachment.
3. Please do not push or pull the magnetic bottom at attached position to prevent scratch on your car.
4. Please replace to new battery and store S·LIGHT in plastic case.

Caution

1. Considering natural discharge, please exchange the battery every 2-3 years.
2. Please keep out of reach of children.
3. Please be careful not to be hit with turning LED bar when you turn on the motor button.
4. Please detach the one side part in advance and do not push or pull the magnetic bottom.

Discard of battery

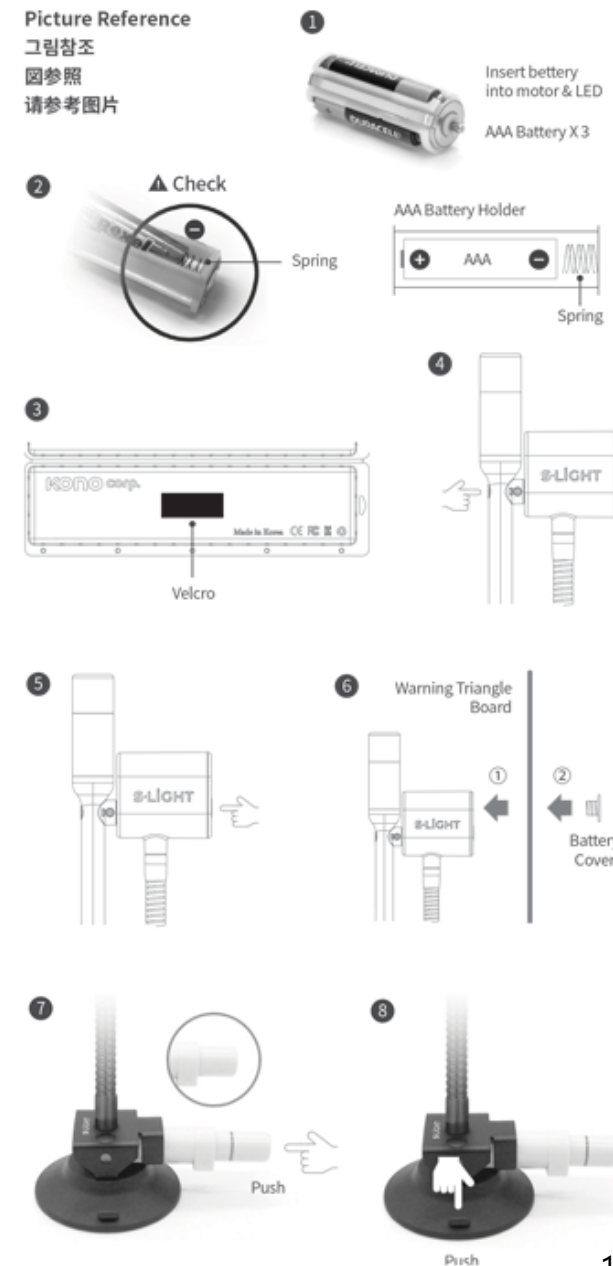
1. Please discard used battry seperately from other wastes according to your regulation.
2. Do not burn out the battery to prevent from explosion and fire.
3. Please discard full discharged battery to prevent hot short.

Product guarantee

1. S·LIGHT is guaranteed for one year against faulty workmanship.
2. Please contact for return, refund and repairment inquiry.
TEL +82-2-858-8877
E-mail afterservice@konocorp.com
Website <http://www.slight.kr>
3. We guarantee only for faulty workmanship during the manufacturing process and do not guarantee for damage, pollution, brakage by customer.
4. Insured product liability insurance.

Picture Reference

그림참조
圖參照
请参考图片



Full Package Configuration

1. S·LIGHT Product
2. Warning Triangle Board
3. Display Paper Cover
4. Manual
5. Velcro Strip
6. Protective Storage Case
7. Outer Paper Box



Specifications

Size Product Size 105 X 88 X 489.5 mm
Package Size 206 X 95 X 590 mm

Battery 3 X AAA Batteries for each of motor and light bar

Motor 225rpm \pm 10% at load

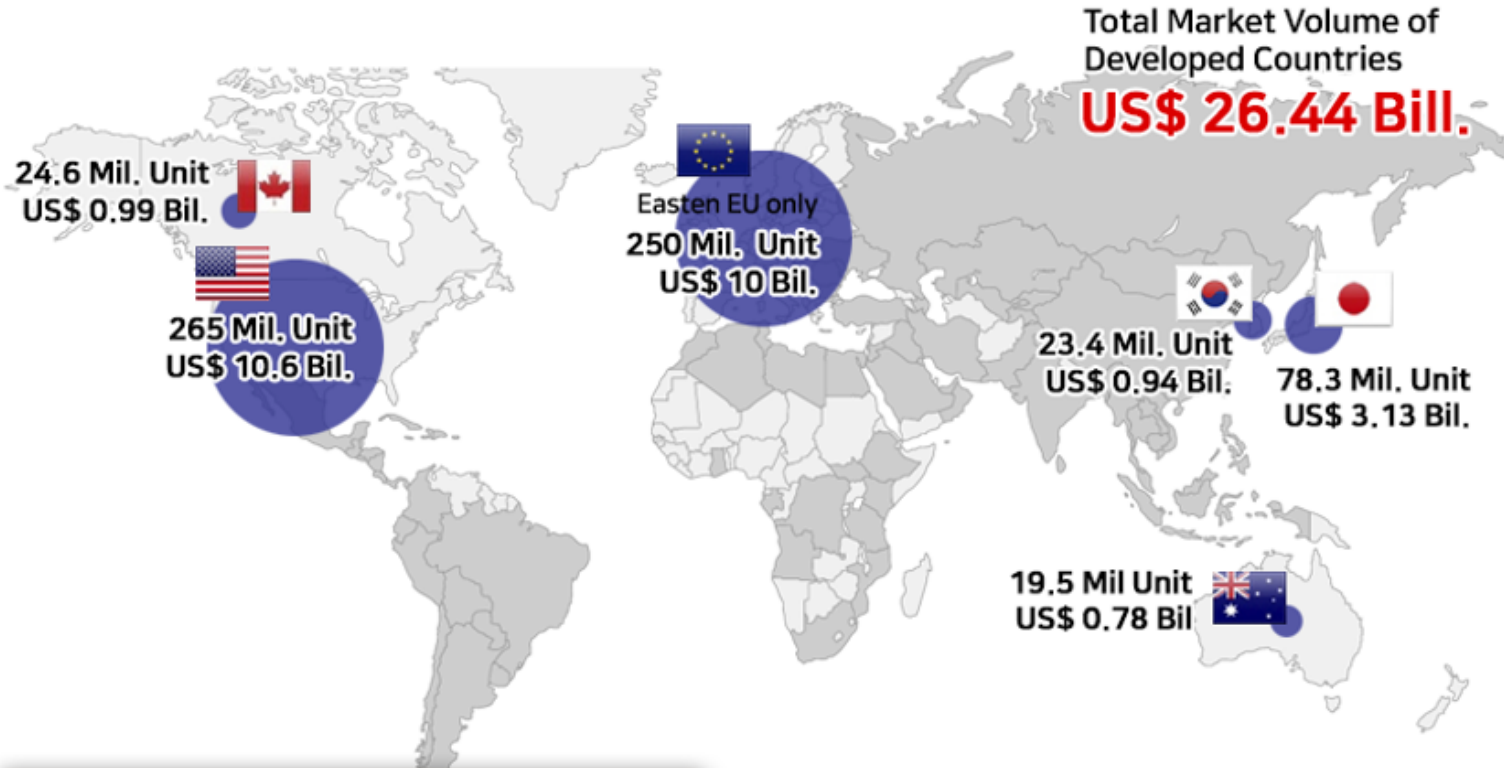
Light Bar Red M5050 X 22 pcs

Luminous intensity Min 620 $\Delta\lambda$ at 60mA

Magnetic Base ϕ 88 / M8*1.25*10mm / Color: Black



Market Volume (Based on US\$ 40 / Unit price)



No competing product
nor big company
BLUE OCEAN

Country	No. of Vehicle	Market Volume
China	340 Mil. Unit	US\$ 13.6 Bil.
India	250 Mil. Unit	US\$ 10.0 Bil.
Mexico	47.8 Mil. Unit	US\$ 1.91 Bil.

“S·LIGHT” has Huge Market Volume.

US market volume is US\$10.6 Bil.
western Europe 15 countries US\$10 Bil. and
Japan market US\$3.1 Bil. based on
40 dollar of unit price.

Total market volume only for developed countries
such as USA, Western EU, Japan, Canada Australia
is more than US\$26 Bil.

This market volume is **not including** US\$13.6 Bil.
of China market and US\$10 Bil. Of Indian market
that are our next target.

Amazingly there is no strong competitor nor
product in the market even this is essential
public interests item with huge market volume.

“S·LIGHT” is absolute **BLUE OCEAN** item.

S·LiGHT

KONO corp.

© S·LIGHT. All rights reserved.

ADDRESS_ A-1104, 32, Digital-ro 9-gil, Geumcheon-gu, Seoul, Republic of Korea

TEL_ 82-2-858-8877 | **FAX_** 82-2-3397-7104 | **E-MAIL_** konocorp@konocorp.com

Family site_ <http://www.konocorp.com>

<http://www.mswing.kr>