



Pilsa
CONNECT TO BETTER

Waste water drainage
PRODUCT GUIDE

Wavin SiTech+ for low-noise soil & waste drainage



Wavin SiTech+

System description

Wavin SiTech+ is a mineral reinforced polypropylene (PP) soil and waste system. The system offers increased robustness, low-noise properties and improved ease of installation.

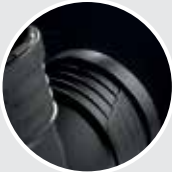
We have increased the weight of the fittings by 20% for improved acoustic comfort during water flow. Its flexible connectivity and push-fit system makes SiTech+ a complete plug and play solution for waste water discharge in buildings.

Quality of living is an important consideration in building design. A reduction of noise in water discharge systems improves end-experience in both living and working environments. Wavin SiTech+ meets the latest construction requirements and fulfills customers' demand for increased comfort and quality.

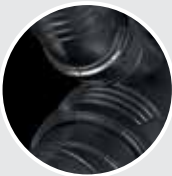
Key system benefits



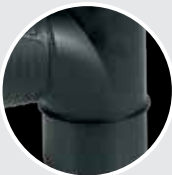
- ◉ **Less noise**
20% heavier fittings set a new market standards in this segment. SiTech+ is a high performance system that reduces the acoustics of water flow.



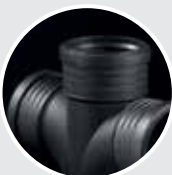
- ◉ **Easier to install**
Ribbed fittings provide enhanced grip for easy installation in complex environments. SiTech+ is perfect for any project, from small renovations to large-scale construction jobs.



- ◉ **Angular rotation guidance**
Fittings have different markings at 15° and 45° intervals for easy alignment. SiTech+ makes it easy to align fittings which need to be positioned at a rotated angle.



- ◉ **Insertion depth check**
Ribs on the spigots of the fittings checks complete insertion into the socket. These easily visible SiTech+ markings can also confirm the exact 10 mm space needed to cope with thermal expansions at long pipe lengths.



- ◉ **New black color**
The new black color adds to the durability and robustness of SiTech+. The black color improves protection against UV radiation when stored outside at a building site. Furthermore the matte black finish is less sensitive to dirt and gives the system a professional appearance.

Application

Wavin SiTech+ meets all standards set for soil & waste discharge systems (EN 1451-1), including noise reduction and fire resistance (EN 13501-1). The emitted noise level of SiTech+ is measured by the Stuttgart Fraunhofer Physical Constructions Institute (DIN EN 14366).

Wavin SiTech+ is the ideal solution for installation in multi-storey building and those that are particularly sensitive to noise like apartment buildings, hotels, offices, hospitals, elderly homes and libraries.

Wavin SiTech+ can be used for water discharge at temperatures up to 90°C, with peaks of to 95°C for short periods. It can also be used at low temperatures up to -20°C. This durability makes it an ideal solution for extreme-temperature drainage areas such as kitchens, laundromats and industrial waste environments.

Please contact Wavin if you have any questions about particular application environments.

The system is offered in a full range of diameters:

- ⊙ 50 mm
- ⊙ 75 mm
- ⊙ 90 mm
- ⊙ 110 mm
- ⊙ 125 mm
- ⊙ 160 mm
- ⊙ 200 mm (Without Socket)

Special fittings

The Wavin SiTech+ portfolio includes specialized fittings for easier and more efficient installation and use, particularly in areas where space is limited.

Swept branches, as compared to sharp angle fittings, allow water to run more smoothly while reducing overall noise levels, improve the ventilation and increase the flow rate.

The new design of access pipes makes inspection easier.



Technical data

Wavin SiTech+

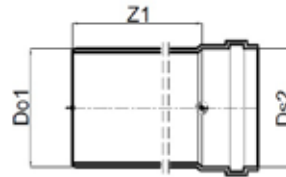
Wavin SiTech+ is an innovative soil and waste system with proven low noise technology.

Technical features:

- ⦿ Optimized 3-layer pipe structure for reduced noise levels
- ⦿ Mineral reinforced polypropylene (PP) material for high durability and heat-resistance
- ⦿ Socketed connections and prefabricated elastomer gaskets (SBR) for fast, easy and secure installation

Table 1: SiTech+ data according to diameters.

Diameter Do1=Ds2	Wall thickness s	Socket length P	Class Serie
50 mm	2.1 mm	47 mm	S14
75 mm	2.6 mm	53 mm	S14
110 mm	3.6 mm	64 mm	S16
125 mm	4.0 mm	71 mm	S16
150 mm	5.0 mm	76 mm	S16
200 mm	6.2 mm	-	S16



Impact resistant

Sound absorbing

Chemical resistant

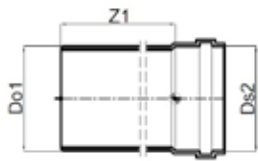


Table 2: SiTech+ specifications and standards.

Characteristics	Reference Value	Norm
Long Reversion (150° C x 60')	≤ 2.0%	ISO 2505
Impact resistance (0° C)	TIR ≤ 10%	EN 744
Fire behavior	E	DIN 4102-1 EN 13501-1
Density	Pipe 1.2 gr/cm ³ Fittings 1.50 gr/cm ³	UNI EN ISO 1183-1
Operating temperature	90°C water discharge 95°C shortterm peak load	
Expansion linear	0.12 mm/m/K	ASTM D 696
Effects of heat (150° C x 60')	No delamination/ deformation	EN ISO 580
Water leakage	No leakage	EN 1053
Tightness	No leakage	EN 1054
Thermal cycle	No leakage	EN 1055
Ring stiffness	≥6 Kn/m ²	
Noise Level (*)	15 db(A)	VDI 4100
	15 db(A)	EN 14366

* According to Fraunhofer test results for 4l/s flowrate.

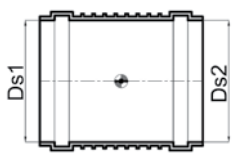
Wavin SiTech+ Product range



Sitech+ Pipe

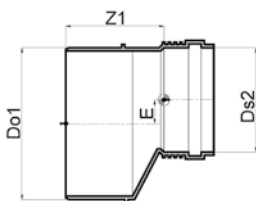
SAP Code	Dimensions mm	Do1=Ds2 mm	Z1 mm
3070671	50	50	150
3070785	50	50	250
3070786	50	50	500
3070787	50	50	1000
3070788	50	50	2000
3070789	50	50	3000
3070790	75	75	150
3070791	75	75	250
3070792	75	75	500
3070793	75	75	1000
3070794	75	75	2000
3070795	75	75	3000
3070796	110	110	150
3070797	110	110	250
3070798	110	110	500
3070799	110	110	1000
3070800	110	110	2000
3070801	110	110	3000
3070675	125	125	250
3070676	125	125	500
3070677	125	125	1000
3070678	125	125	2000
3070779	125	125	3000
3070780	160	160	250
3070781	160	160	500
3070782	160	160	1000
3070783	160	160	2000
3070784	160	160	3000
3070674	200	200	3000

Wavin SiTech+ Product range



Coupler

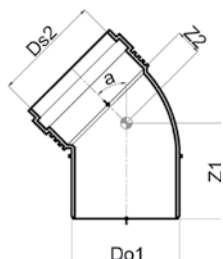
SAP Code	Dimensions mm	Ds1=Ds2 mm
3067791	50	50
3067792	75	75
3067794	110	110
3067795	125	125
3067796	160	160
3071070	200	200



Long Eccentric Reducer

SAP Code	Dimensions mm	Do1 mm	Ds2 mm	Z1 mm	E mm
3067815	75	75-50	50	77	12
3067816	110	110-50	50	106	27
3067817	110	110-75	75	98	17
3067818	125	125-110	110	98	7
3067819	160	160-110	110	121	24
3067820	160	160-125	125	117	16
3071069	200	200-160	160	130	16

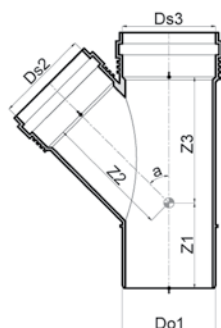
Wavin SiTech+ Product range



Bend

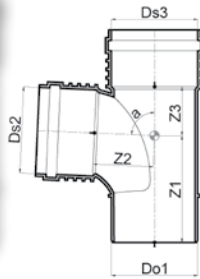
SAP Code	Dimensions mm	Do1=Ds2 mm	Z1 mm	Z2 mm	a °
3067726	50 x 45°	50	65	17	45
3067741	50 x 87.5°	50	78	31	87.5
3067727	75 x 45°	75	75	22	45
3067742	75 x 87.5°	75	95	45	87.5
3067729	110 x 45°	110	96	33	45
3067744	110 x 87.5°	110	128	64	87.5
3067730	125 x 45°	125	105	38	45
3067745	125 x 87.5°	125	141	74	87.5
3067731	160 x 45°	160	121	48	45
3067746	160 x 87.5°	160	166	94	87.5
3070672	200 x 45°	200	147	75	45
3070673	200 x 87.5°	200	195	127	87.5

Branch



SAP Code	Dimensions mm	Do1=Ds3 mm	Ds2 mm	Z1 mm	Z2 mm	Z3 mm	a °
3067751	50-50 x 45°	50	50	64	71	71	45
3067774	50-50 x 87.5°	50	50	82	35	36	87.5
3067752	75-50 x 45°	75	50	56	82	77	45
3067775	75-50 x 87.5°	75	50	82	45	35	87.5
3067753	75-75 x 45°	75	75	74	96	96	45
3067776	75-75 x 87.5°	75	75	95	49	49	87.5
3067778	110-50 x 87.5°	110	50	96	63	37	87.5
3067779	110-75 x 87.5°	110	75	109	66	52	87.5
3067780	125-110 x 87.5°	125	110	133	77	71	87.5
3067757	110-50 x 45°	110	50	63	105	93	45
3067758	110-75 x 45°	110	75	71	122	113	45
3067760	110-110 x 45°	110	110	108	138	138	45
3067761	125-75 x 45°	125	75	70	133	121	45
3067762	125-110 x 45°	125	110	95	149	146	45
3067763	125-125 x 45°	125	125	106	156	156	45
3067781	125-125 x 87.5°	125	125	141	80	79	87.5
3067764	160-110 x 45°	160	110	82	175	164	45
3067782	160-110 x 87.5°	160	110	165	103	103	87.5
3067765	160-160 x 45°	160	160	120	200	200	45
3067783	160-160 x 87.5°	160	160	165	111	101	87.5
3070903	200-200 x 45°	200	200	140	250	253	45

Wavin SiTech+ Product range



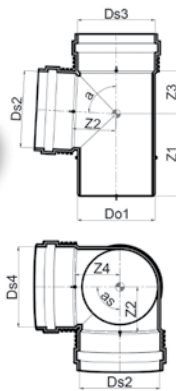
Swept Branch

SAP Code	Dimensions mm	Do1=Ds3 mm	Ds2 mm	Z1 mm	Z2 mm	Z3 mm	a °
3067835	110-110 x 87.5°	110	110	144	143	64	87.5



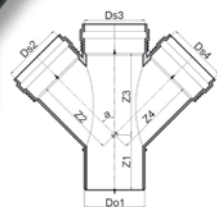
Shower Branch

SAP Code	Dimensions mm	Do1=Ds3 Ds4 mm	Ds2 mm	Z mm	Z1 mm	Z2 mm	Z3 mm	Z4 mm	a °
3071187	110-110-50 x 87.5°	110	50	111	96	63	79	64	87.5



Corner Branch

SAP Code	Dimensions mm	Do1=Ds3 mm	Ds2=Ds4 mm	Z1 mm	Z2=4 mm	Z3 mm	a °	as °
3067831	110-50-50 x 87.5°	110	50	96	63	37	87.5	90

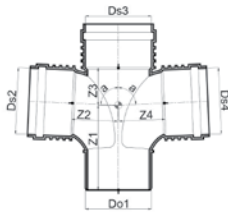


Double Branch

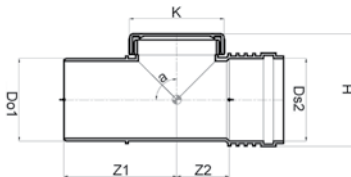
SAP Code	Dimensions mm	Do1=Ds3 mm	Ds2=Ds4 mm	Z1 mm	Z2=Z4 mm	Z3 mm	a °
3070908	50-50-50 x 45°	50	50	60	64	64	45
3070902	50-50-50 x 87.5°	50	50	68	37	39	87.5
3070904	75-50-50 x 45°	75	50	52	87	82	45
3067837	110-50-50 x 45°	110	50	96	63	37	45
3070905	110-50-50 x 87.5°	110	50	90	65	39	87.5
3070907	110-110-110 x 45°	110	110	78	140	140	45
3070906	125-110-110 x 45°	125	110	90	147	142	45

Wavin SiTech+ Product range

Double Swept Branch

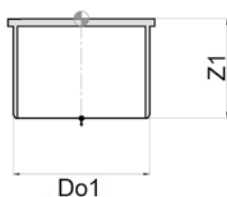


SAP Code	Dimensions mm	Do1=Do3 mm	Ds2=Ds4 mm	Z1 mm	Z2=Z4 mm	Z3 mm	a °
3067838	110-110-110 x 87.5°	110	110	144	143	64	87.5



Access piece

SAP Code	Dimensions mm	Do1 mm	Z1 mm	Ds2 mm	Z2 mm	H mm	K mm	a °
3067784	50	50	83	50	36	80	65	90
3067785	75	75	102	75	50	111	93	90
3067787	110	110	135	110	72	155	128	90
3067788	125	125	142	125	74	162	146	90
3067789	160	160	200	160	121	236	141	90



End Cap

SAP Code	Dimensions mm	Do1 mm	Z1 mm
3067825	50	50	36
3067826	75	75	35
3067828	110	110	39
3067829	125	125	49
3067830	160	160	55

New: SiTech+ **Checkmate**



20% *More weight*

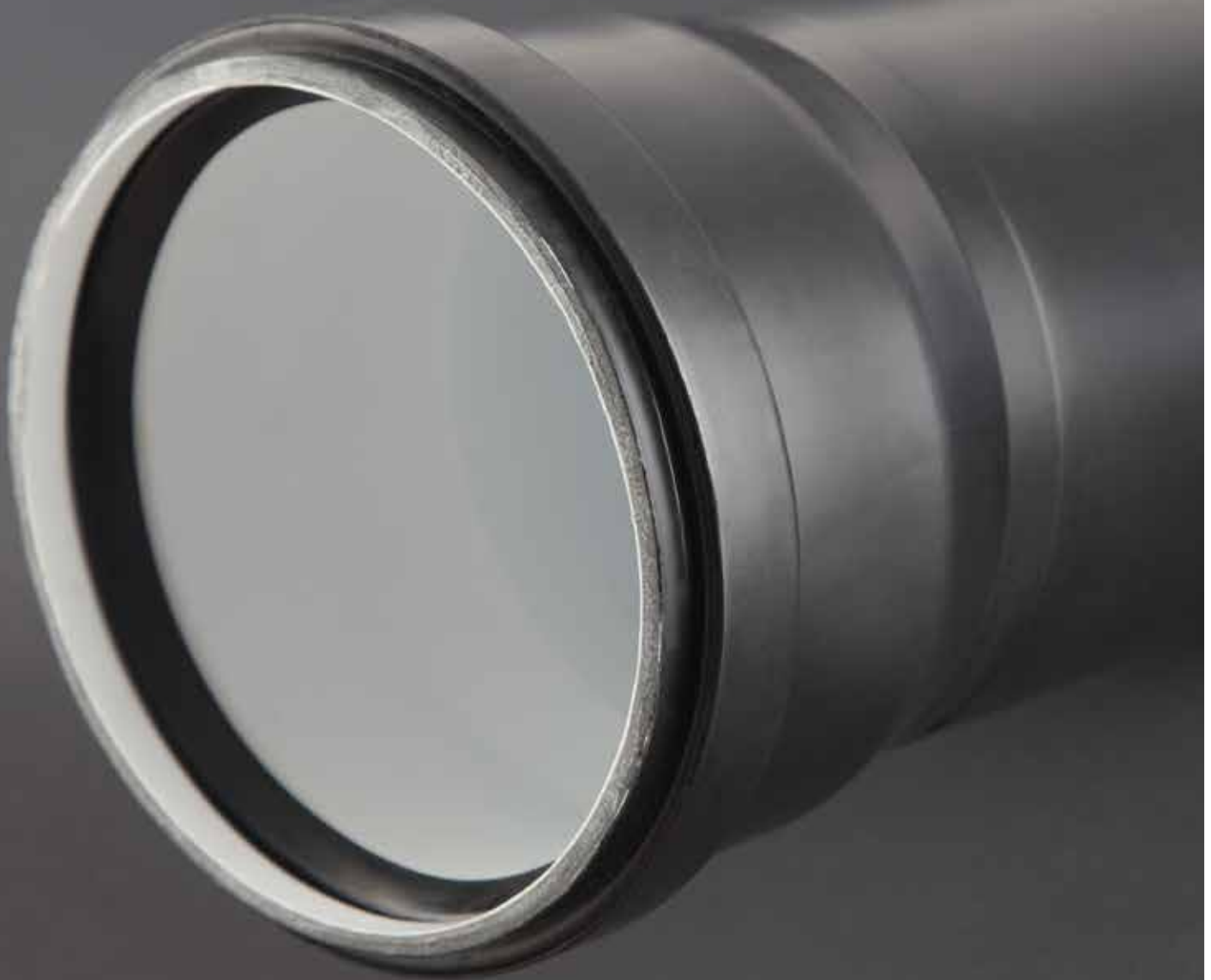
Less noise

New Wavin SiTech+ sets a higher standard for low-noise soil and waste systems. With 20% more weight in the fittings, we have increased robustness and reduced the noise of water flow. Even in areas that are difficult to reach, installation is now easier with our improved product design. For any waste water installation project, SiTech+ is the better choice.

wavin

Pilsa

CONNECT TO BETTER



Discover our brand portfolio at
www.wavin.com.tr



Water management | Heating and cooling | Water and gas distribution
Waste water drainage | Cable ducting

Mexichem
Building & Infrastructure

wavin

Pilsa

CONNECT TO BETTER

