

ISO 9001  
BUREAU VERITAS  
Certification



**epemu**<sub>sa</sub>



MV/HV TRANSFORMERS



MEDIUM AND  
HIGH VOLTAGE  
**CATALOGUE**





# PRESENTATION AND ACTIVITIES

**Eremu, S.A.** was established more than 50 years ago as a firm dedicated to manufacture and repair electrical transformers.

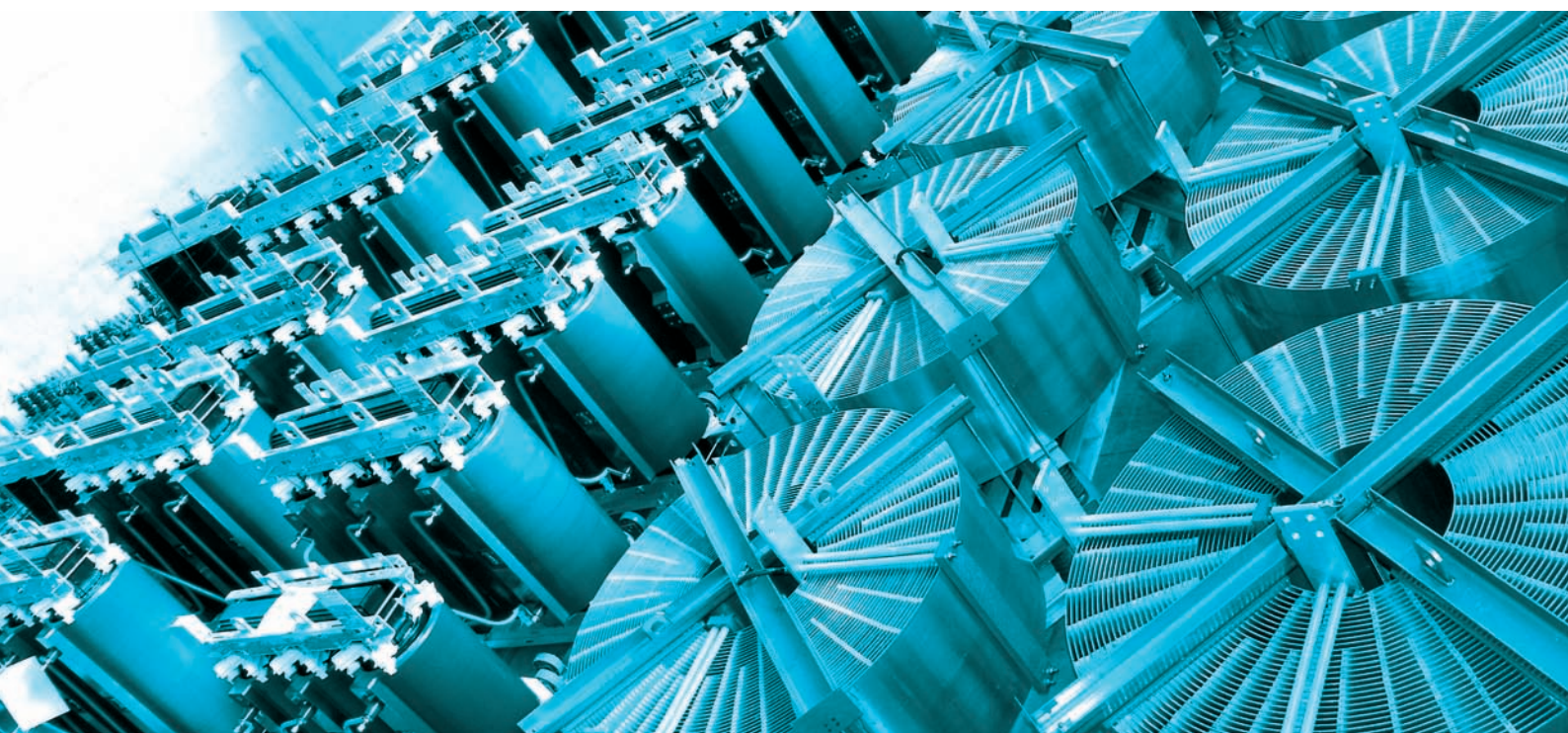
Aftewards, and due to complete a line of parallel necessities detected in our costumer´s environment, we enlarged our range of products with a line of elements associated to the others.

A line of battery chargers and another of power suppliers constituted this new range basically. In both cases directed preferentially to our customers on the naval sector.

At the moment our presence in the market is completely consolidated due to our firm bussines policy. The strongest points of this policy are the following:

- Best quality guaranteed (From computer electrical design to automatized final testings)
- Fluid and permanent contact with our clients: in order to adjust as much as possible to their needs.
- Efficient and quick service guaranteed. Followers of all the international standards request: CE Standard, ISO-9001, International standards of manufacturing and testing.
- Wide presence in different markets (Naval sector, Railways, Tool machinery, Eolic Industry, Power electronic, galvanic baths, Diverse Industries)







## CAST RESIN TRANSFORMERS

Product for indoor application

06

## OIL IMMERSED TRANSFORMERS

Product for outdoor application

08

## DRY TYPE TRANSFORMERS

Not inflammable

10

## REACTORS

In case of breakdown

12

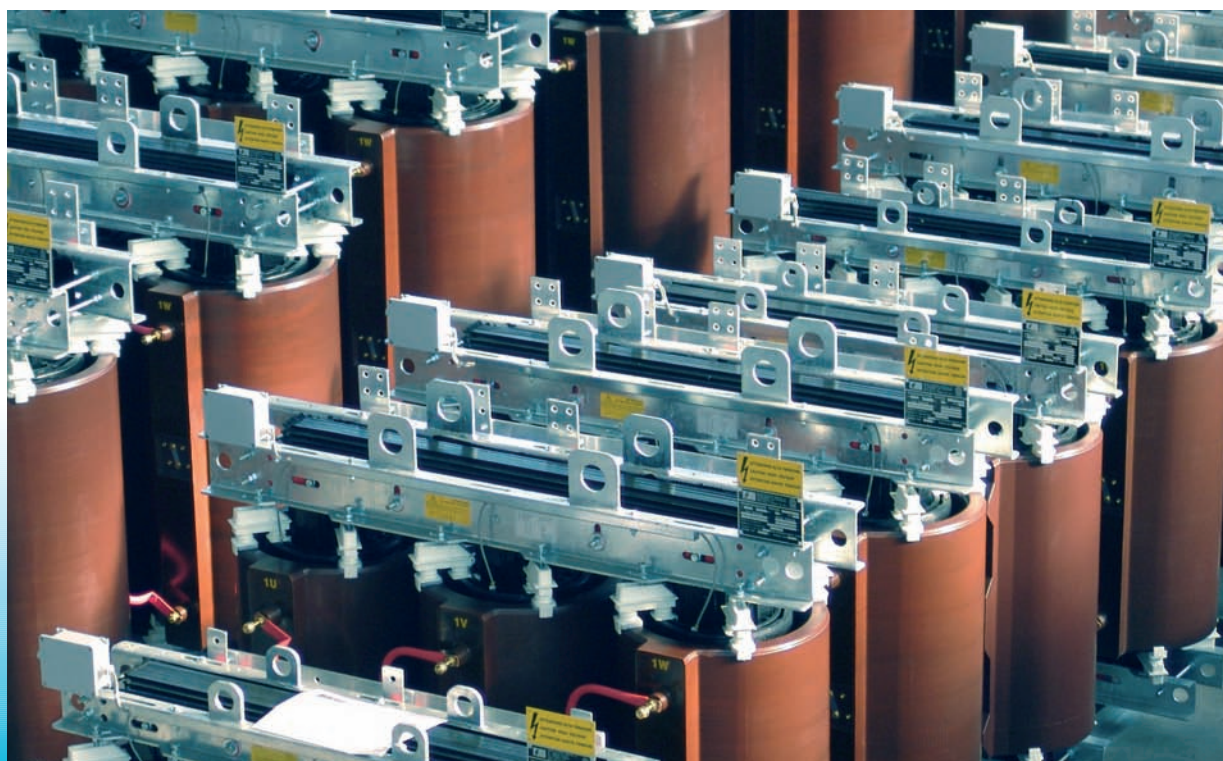
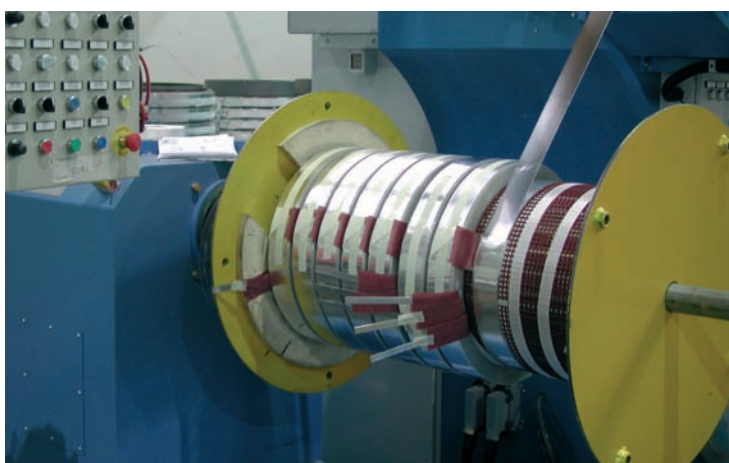
## AUTOTRANSFORMERS

In case of engine start up

14



# INDOOR PRODUCT



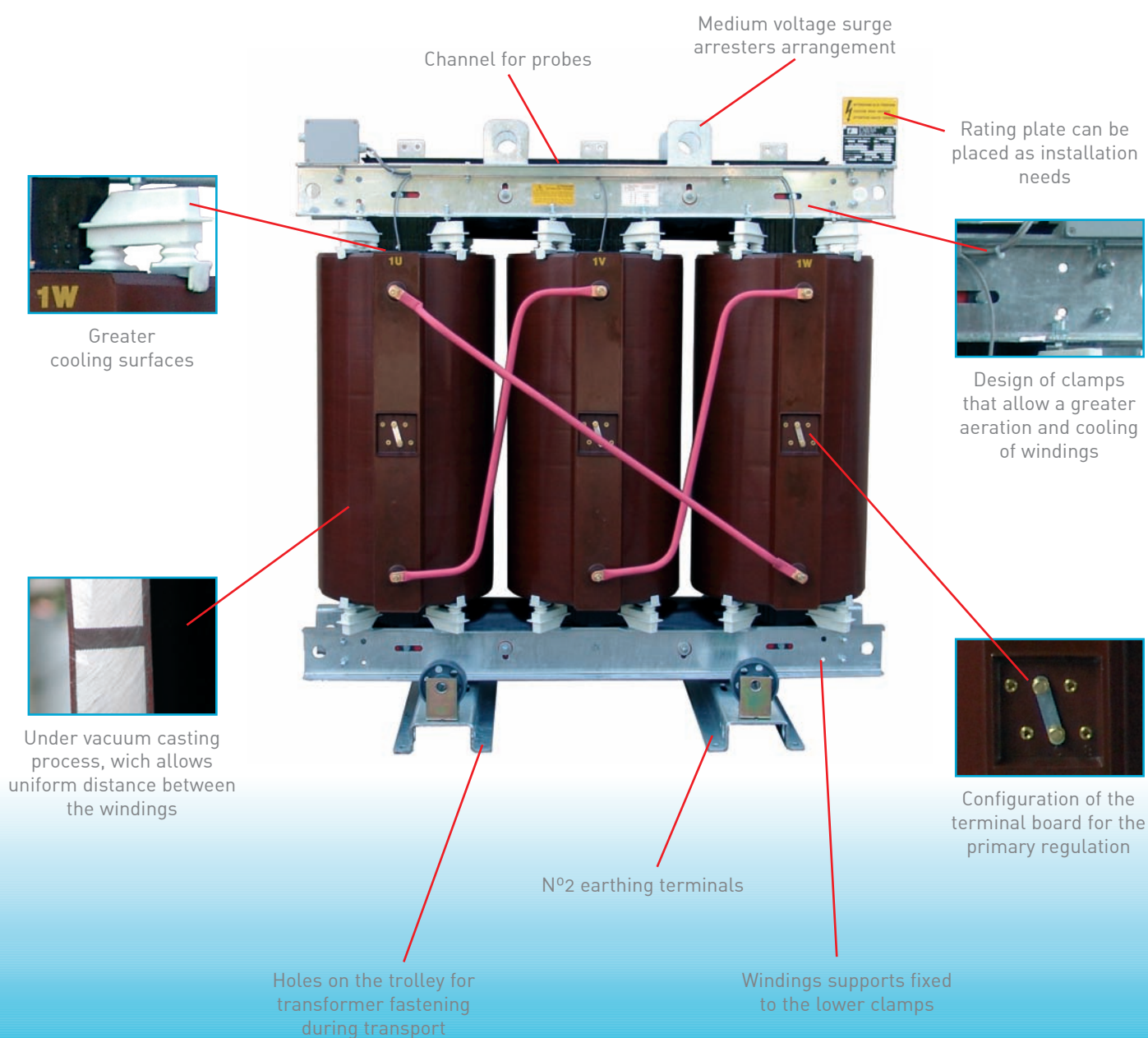


# Cast resin transformers

Avant-garde production processes and industrial concepts characterized by constant innovations allow to obtain a product with a **longer life cycle from 3 to 5 years** respect to analogous products on the market.

This is due to the **50% reduced partial discharge level**.

This product is characterized by the following PLUS.





# OUTDOOR PRODUCT





# Oil immersed transformers

Our production covers a wide power range, extending **from 50 kVA up to 30000 kVA**, with voltage classes from **1,1 Kv up to 145 Kv**.

The product is characterized by reliable production features common to all the **EREMU** production range.

This product is characterized by the following PLUS:



Separated boxes for high voltage and low voltage.



Cooling fins with reinforcements to guarantee the transport



Sealing covers of big dimensions that facilitate connections and inspections



Filter press and drain valves to avoid long connection distances



Identification plate can be positioned freely



Positioning of conservator drain valve at human height to facilitate maintenance services and discharge operations.



Windings with special diamond dotted presspaper



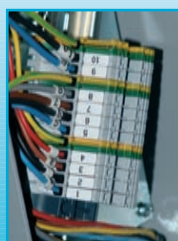
Positioning of dryers at human height to facilitate maintenance



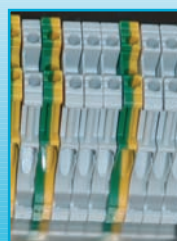
Auxiliary Terminal Box



Cable protection with armoured sheathing



Terminals and cables with identification number



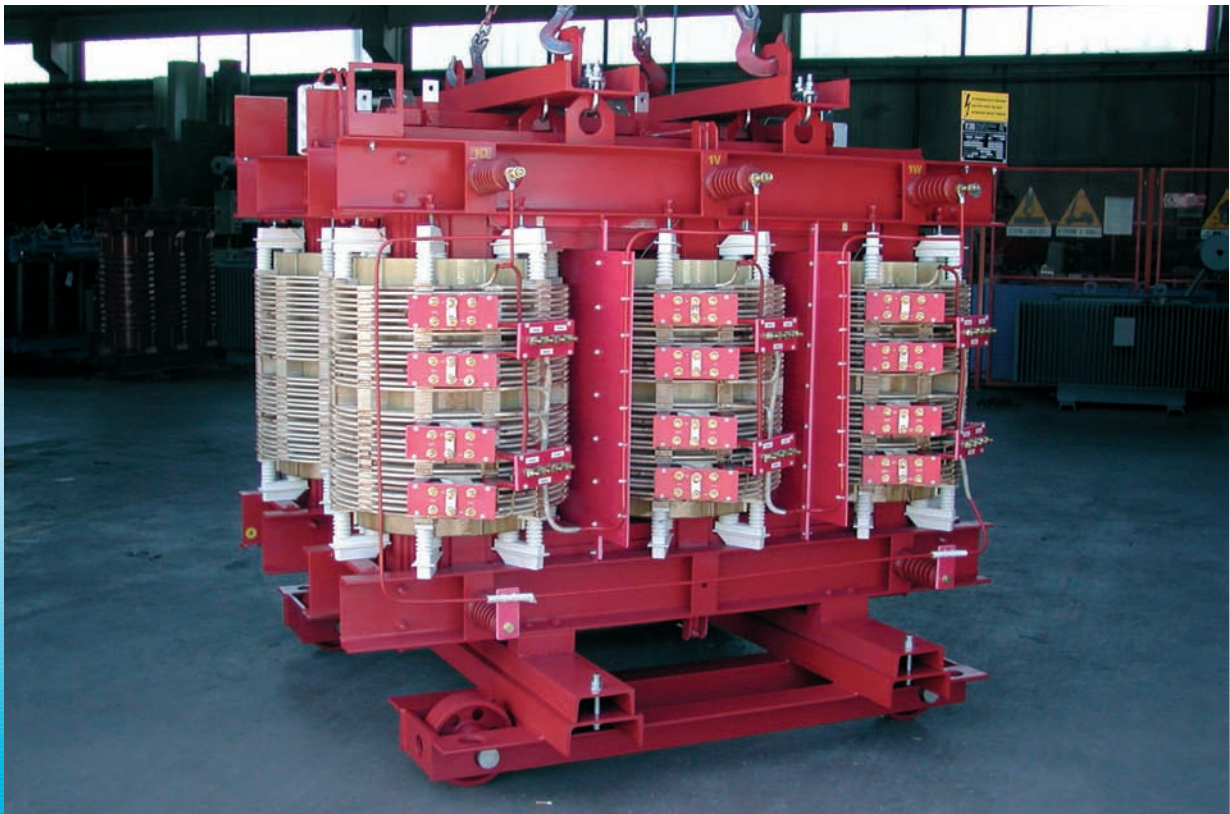
Ground terminals for each accessory marked with yellow and green cables



Accessories with cables with identification number



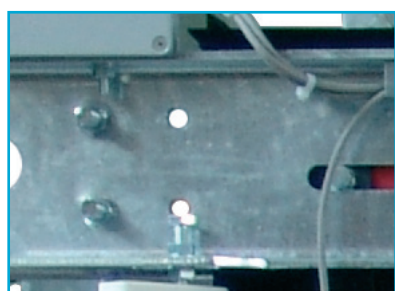
# NOT INFLAMMABLE





# Dry type transformers

In certain contexts like refineries or the petrochemical field, the non-inflammability becomes a factor of primary importance. The dry type transformer is the ideal product in these contexts thanks to the productive technology and thanks to some special features such as:



Clamping system with grooves



Aluminium box for probes



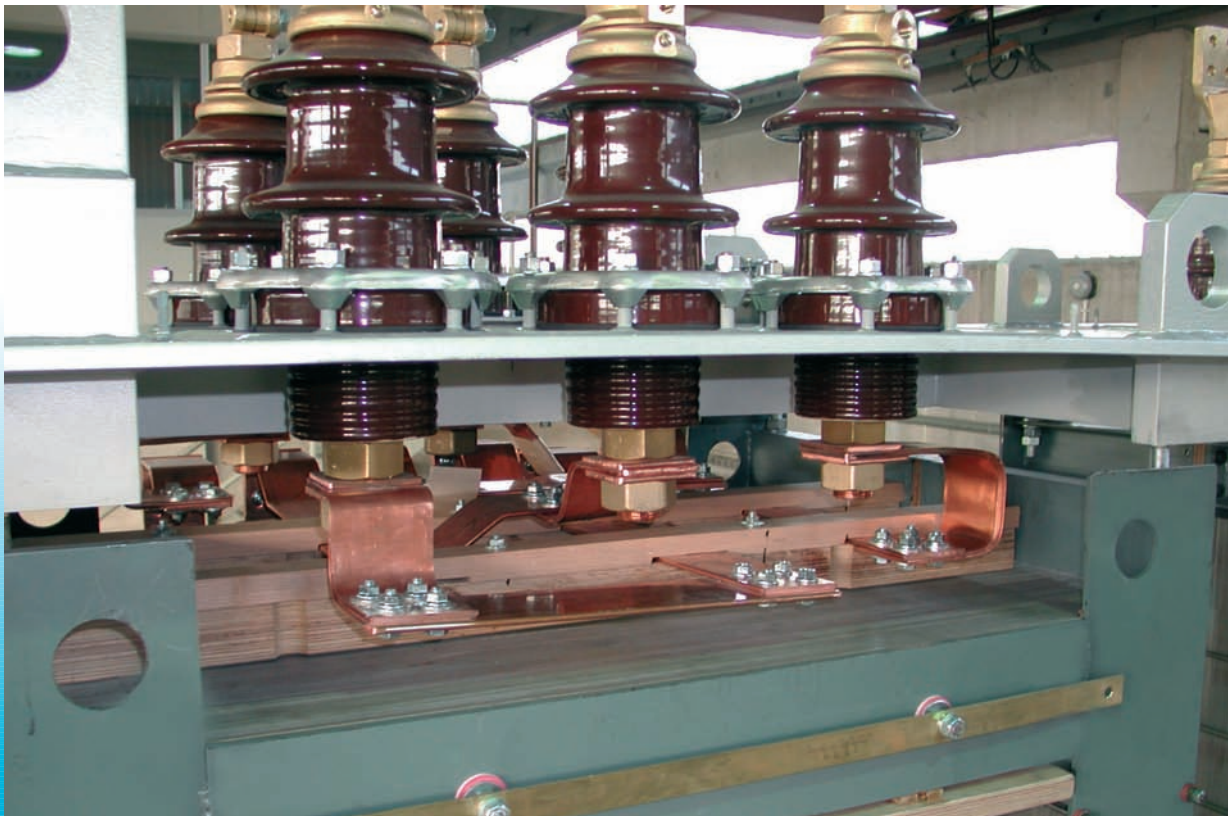
Phase isolation for fixing the delta connection bars



Interleaved disc windings



# IN CASE OF BREAKDOWN





# Reactors

The **EREMU reactor** is a **current limiter** in case of short-circuit in the system.

It is for reason that its position is at the output power plants or at the input position in substations.

Oil immersed reactors



OUTDOOR

Dry type reactors



INDOOR

The production range extends up to 6000 A with insulation classes up to 36 KV.



# IN SITUATIONS OF ENGINE START UP

EVERY ENGINE START UP REPROPOSES A SITUATION  
OF SHORT-CIRCUIT



**A controlled start reduces twisting efforts, burns and  
the mechanical wear of the engine.**

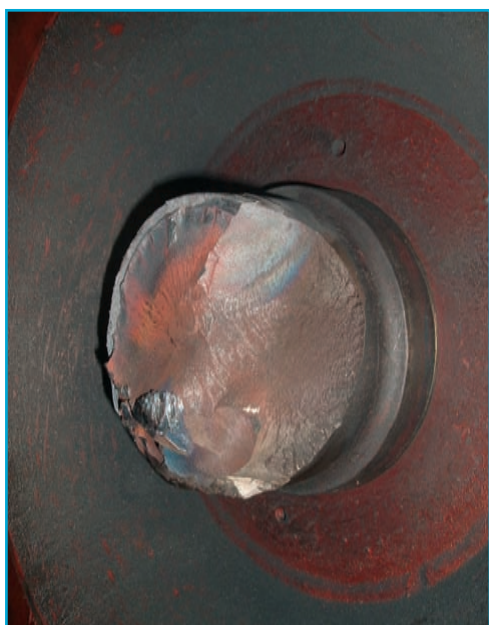


# Autotransformers

It is ideal product in the situations of engine start up that, as know, reproduces the conditions of a short-circuit.

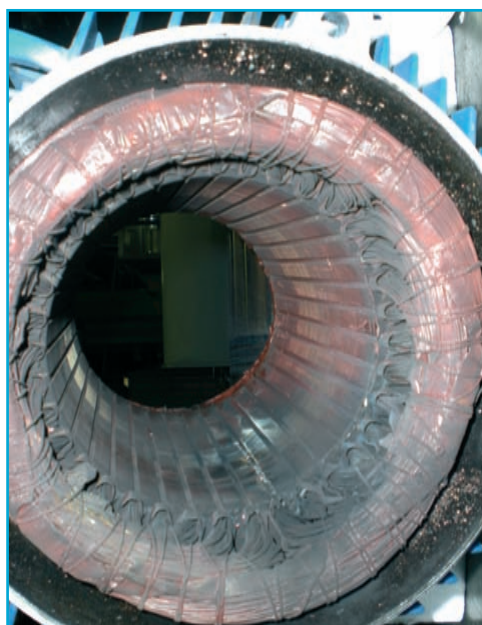
## AUTOTRANSFORMERS ALLOW A CONTROLLED START UP WICH REDUCES

Twisting efforts



Generating wear  
and breaches

Burns



Generating  
machine stop

To these advantages we have to add the benefits due to the functioning flexibility.

This product is made for **indoor and outdoor usage**.

If installed outside, it does not need particular protections against the contact or premises used for the installation.

It reveals as a **product that generates incredible cost savings**.



Donostia Ibilbidea, 70 - Parc. 5, 6  
Tel 943 33 33 11 - Fax 943 33 71 25  
20115 - ASTIGARRAGA  
e-mail: [ventas@eremu.es](mailto:ventas@eremu.es)  
[www.eremu.es](http://www.eremu.es)

