

# What is the **ENDO-WIZ**?



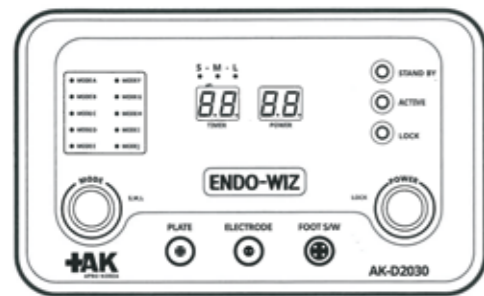
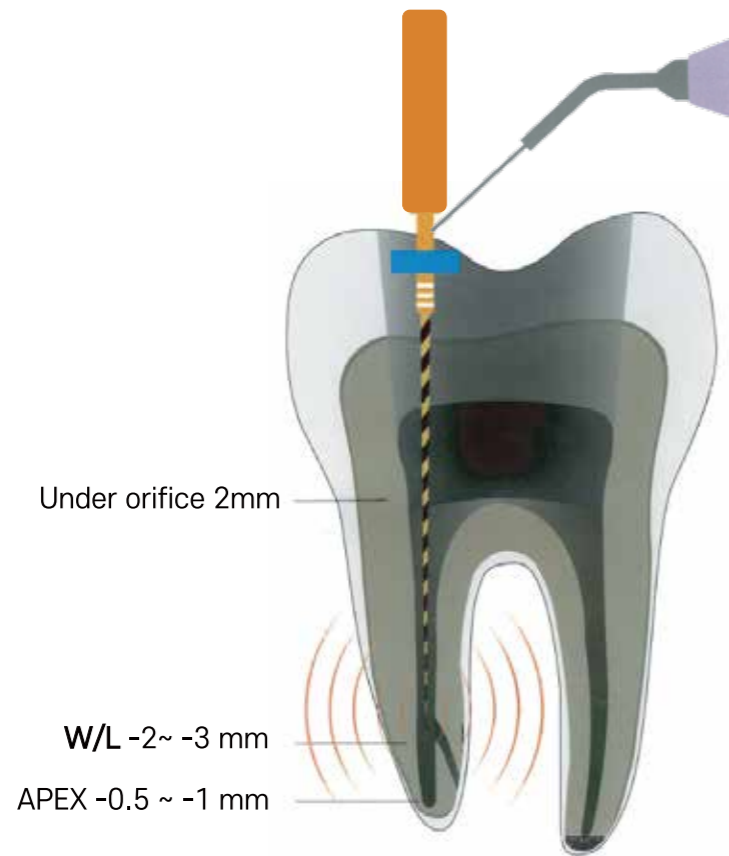
## What is the Radiofrequency (RF) electrosurgical device?

It is a device that generates Joule heat in the cell tissue itself without heating the electrode itself, thereby performing coagulation, hemostasis, and sterilization of the tissue.

<RF high frequency>

RF transmitted through the tip generates heat energy due to friction between (+)(-) ions at the tip of the file inside the root canal.

In this process, a small amount of plasma is also generated to aid in the sterilization effect.



A MODE	Teeth extapation in root canal	F MODE	Periodontal inflammation
B MODE	Teeth extapation in root canal	G MODE	Hyper-sensitive treatment
C MODE	APEX	H MODE	Peri-implant inflammation
D MODE	APEX	I MODE	Gum Incision
E MODE	Periodontal inflammation	J MODE	Gingival white Hemostasis

The overwhelming evolution of Endodontic treatment

# ENDO-WIZ





**All - in - One**



ENDO-WIZ uses RF to kill even the remaining dimensions of complex hidden nearby tubes with thermal energy.

In addition to root canal treatment, various clinical applications are possible.

Root canal treatment

Peri-implant inflammation

Hyper-sensitive treatment

Periodontal treatment

Gum Incision

Melanin pigmentation removal

**ENDO-WIZ TIP**

View clinical case video



Root canal file contact a cut of the gums (hemostasis)	Root canal file contact a cut of the gums (hemostasis)	Root canal file contact periodontal treatment peri-implant inflammation	Hyper-sensitive treatment	Melanin pigmentation removal
--	--	---	---------------------------	------------------------------



**"You'll know when you try it"**



Doctor Kang Ik-je  
NY Dental Clinic

**Use three nerve treatment equipment and choose Endo-wiz**

Endo-wiz is efficient because it is equipped with a dental-specific program. Above all, it is superior to other companies in terms of stability. We think it is the best endodontic treatment option for general dentists.



Doctor Kim Kyung-heon  
Anyang Yega Dental Clinic

**We have been using it since the Japanese COSMO equipment.**

I use it with confidence thanks to Endo-wiz, which has perfectly described 15 years of high-frequency endodontic treatment data from Japan. I trust 'Apro-Korea', a Radio frequency specialist with 20 years of experience.



Doctor Koh Sang-cheol  
Gang buk Happiness-planting Dental Clinic

**I hesitated because I thought I would want to buy it if I saw the demo.**

Now, I keep Endo-wiz on standby every time I do root canal treatment. It is now an indispensable equipment in our dental clinic as it excels in the apical region and even resolves fistulas.



Doctor Kim Young-wook  
Wonju Dental Clinic

**Once I start endodontic treatment, I always turn on Endo-wiz.**

Although I am an oral surgeon, I am also serious about root canal treatment. After meeting Endo-wiz, Endodontic treatment, it had been lacking, was given wings. Because the endodontic treatment is comfortable, both the patient and I smile.



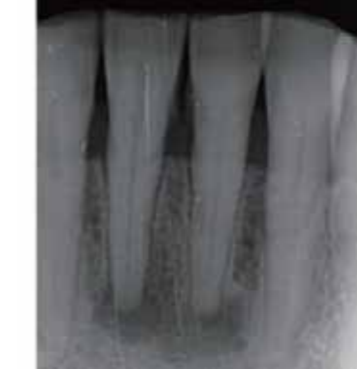
20 years of **high-frequency technology**  
**A/S for sure** because it is manufactured directly



**Irreversible acute pulpitis (#47)**



**Periapical abscess (#31, 41)**



**Chronic pulpitis (#26)**



**A case of recurrent root canal treatment (#26)**



**Apical Abscess (#33)**

