

# GRUPPO DIMENSIONE

## A group of specialists



**DIMENSIONE S.p.A.** (Turin - Milan - Rome - St. Genis P.)  
Parent company, general contractor.



**OSP.ITAL.** (Turin - Milan - Rome)  
Healthcare solutions.



**M.C.M. Ingegneria S.r.l.** (Turin - Milan - Rome)  
Integrated engineering.



**S.i.m.a.f. System** (Turin)  
Metal carpentry, doors and windows.



**M.e.r.i.t. S.r.l.** (Rome)  
General contractor and facility management.



**Gruppo Dimensione S.A.** (Lugano)  
General contractor.



**Dimensione International S.a.r.l.** (Tunis)  
International Markets



**Six Twenty Investments Ltd.** (Nairobi, Kenya)  
Property company.

### OFFICES

**FRANCE**  
Saint Genis Pouilly

**SWITZERLAND**  
Lugano

**ITALY**  
Turin  
Milan  
Rome

**TUNISIA**  
Tunis

**KENYA**  
Nairobi

## INDEX

### Sustainable Healthcare

- PHILOSOPHY
- MOBILE UNITS
- PREFABRICATED SOLUTIONS
- PROJECTS

### Turnkey solutions

- PHILOSOPHY
- A COMPLETE PROPOSAL
- INTERIOR PREFABRICATED SOLUTIONS
- MEDICAL EQUIPMENT
- PROJECTS

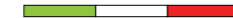
### Facility Management

- PHILOSOPHY



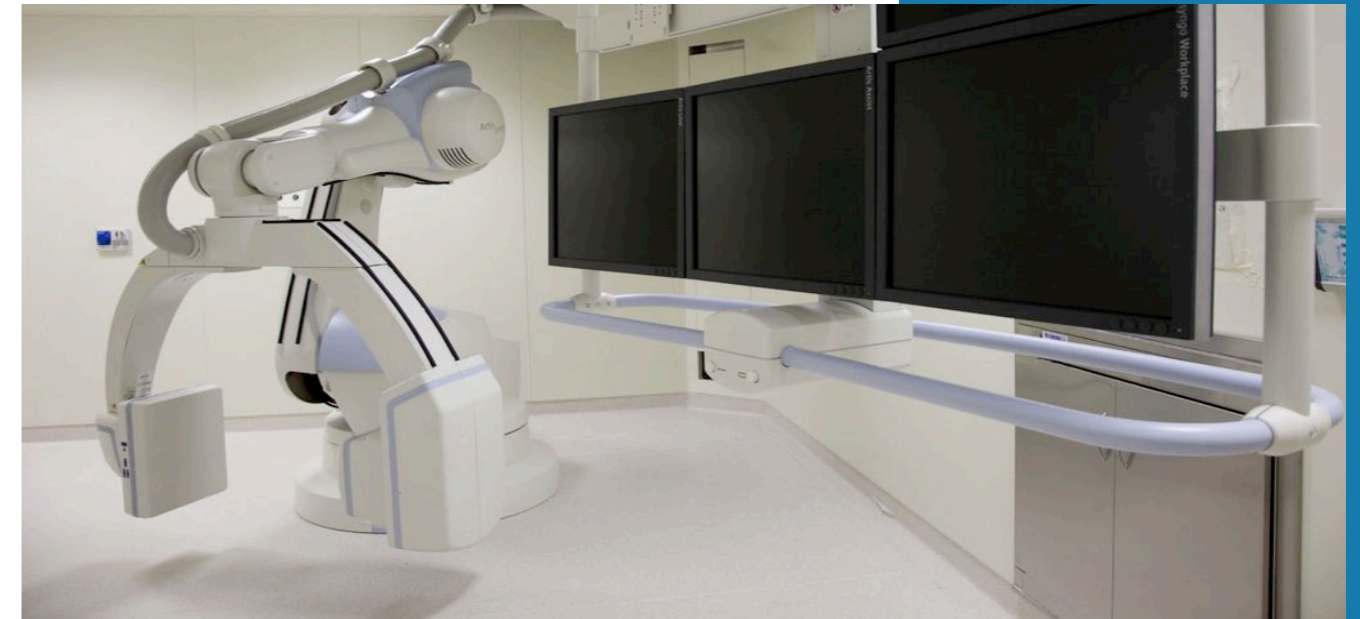
## OSP.ITAL. THE HEALTHCARE BRAND

MADE IN ITALY



**Osp.Ital.** is specialized in providing innovative solutions and services in the healthcare sector with proficiency and experience.

**Osp.Ital.** works closely with the other companies and brands of the Group. From the study to the project, our engineers, architects and technicians develop high profile design and technological solutions that ensure efficient health facilities to the customer.



# SUSTAINABLE HEALTHCARE

## Philosophy

### GOALS

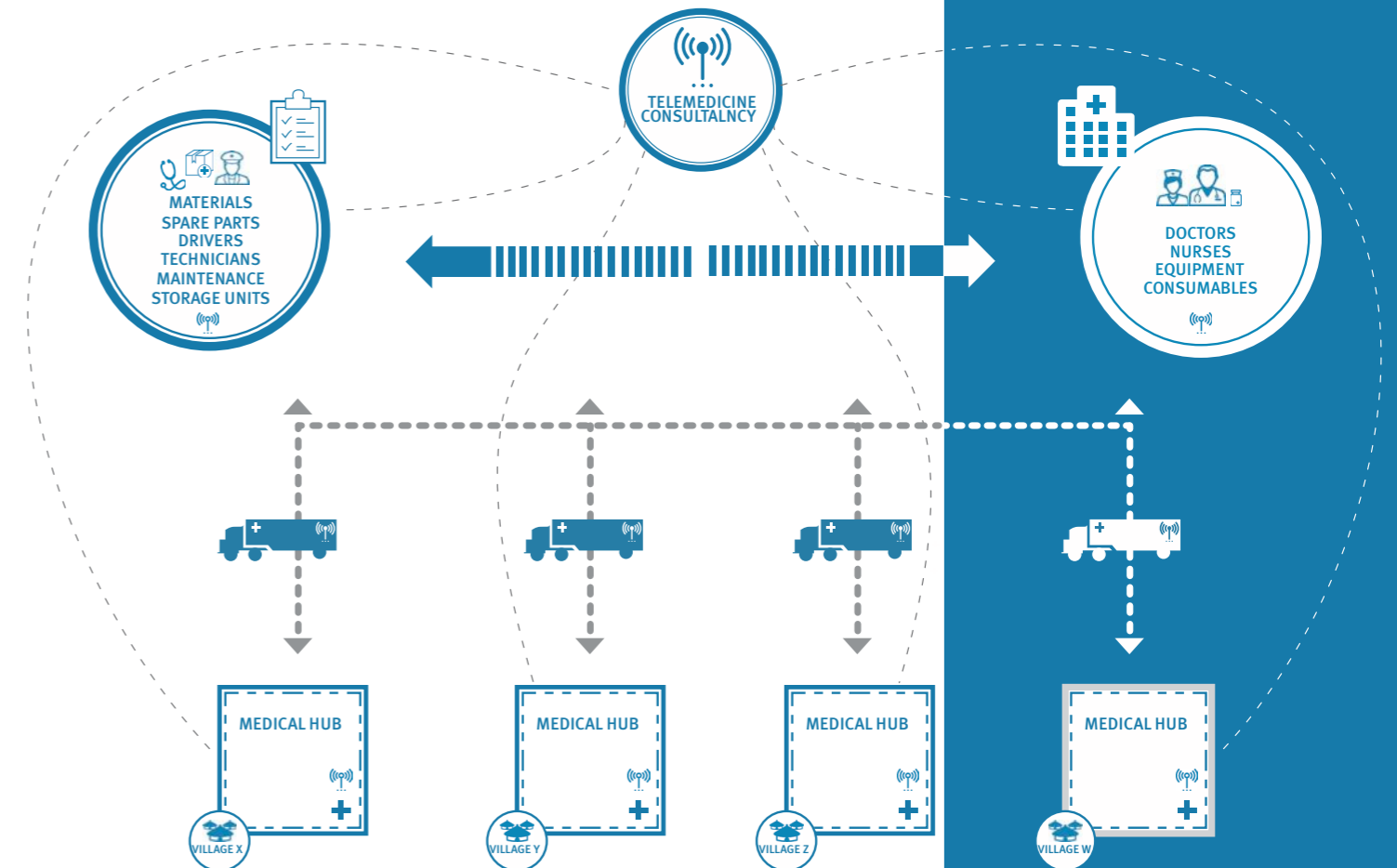
- To be closer to the patient
- To provide care in remote areas
- To guarantee the maximum through-put of care to patients' needs
- To leave the Main Urban Hospitals to focus on more specialized healthcare needs by providing primary and general healthcare in remote areas

### ADVANTAGES

- To provide additional clinical capacity to meet changing demand
- To maintain capacity during refurbishment
- To respond quickly to the emergency situations



## A BRIDGE BETWEEN AN UNDERSERVED HOSPITAL AND NEW HEALTHCARE FACILITIES



# Mobile Units

## MEDICAL HUB WITH MOBILE UNITS FROM OSP.ITAL.

Our purpose is to bring mobile and modular solutions where there is a lack of healthcare facilities.

### STRENGTH

- Low cost of acquisition
- Short construction and execution time
- Expandable modules
- Reproducible
- Reusable and relocatable
- Cost effective implementation
- Concrete solution = financeable

## MOBILE HOSPITAL SOLUTIONS

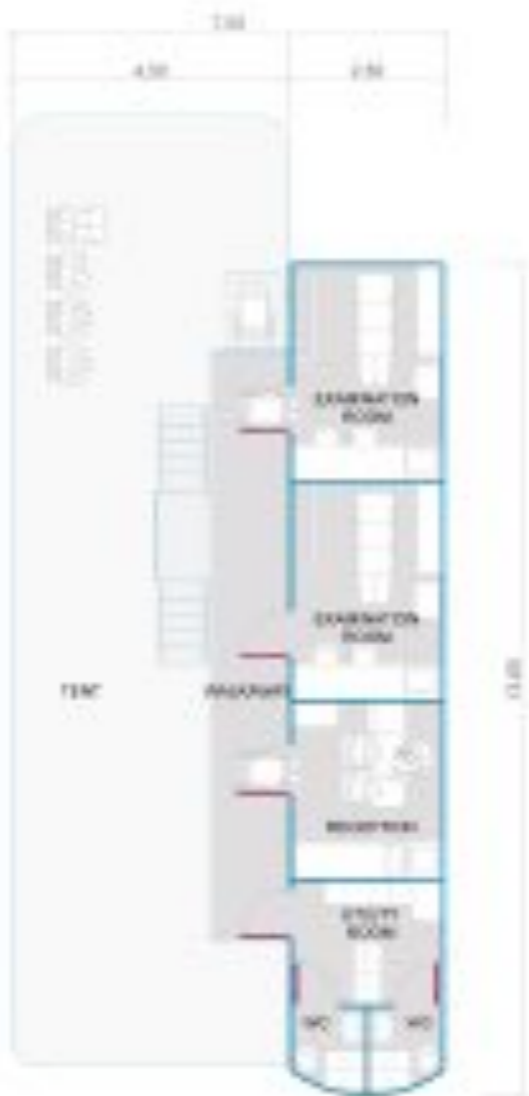
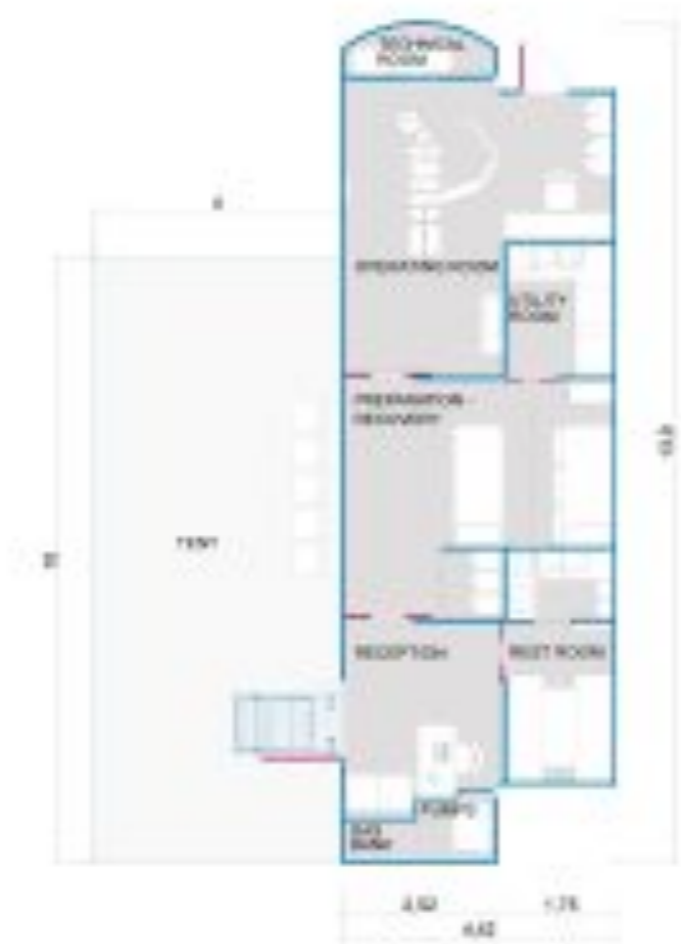


# MOBILE OPHTHALMIC SURGERY ON WHEELS

## FEATURES:

The Unit is constructed on a chassis for easy delivery. It has a complete clinic environment. It is composed by a reception, 2 beds preparation and recovery room, an operating room, a staff rest room and a utility room.

- Unit dimension: 13.90 m length, 2.50m width, 4.40m in operation and 7.00m including tent
- Site location required: 16m by 10m (160m2)
- Hepa filtered environmental air which conforms to ISO7 with up to 20 changes preparation and recovery room
- Air conditioning variable humidification range: -5°C to +35°C
- Integrated medical gas bank



# MOBILE CLINIC ON WHEELS

## FEATURES:

The Unit is constructed on a chassis for easy delivery. It has a complete clinic environment. It is composed by 2 examination rooms, 1 reception, a utility area and 2 bathrooms.

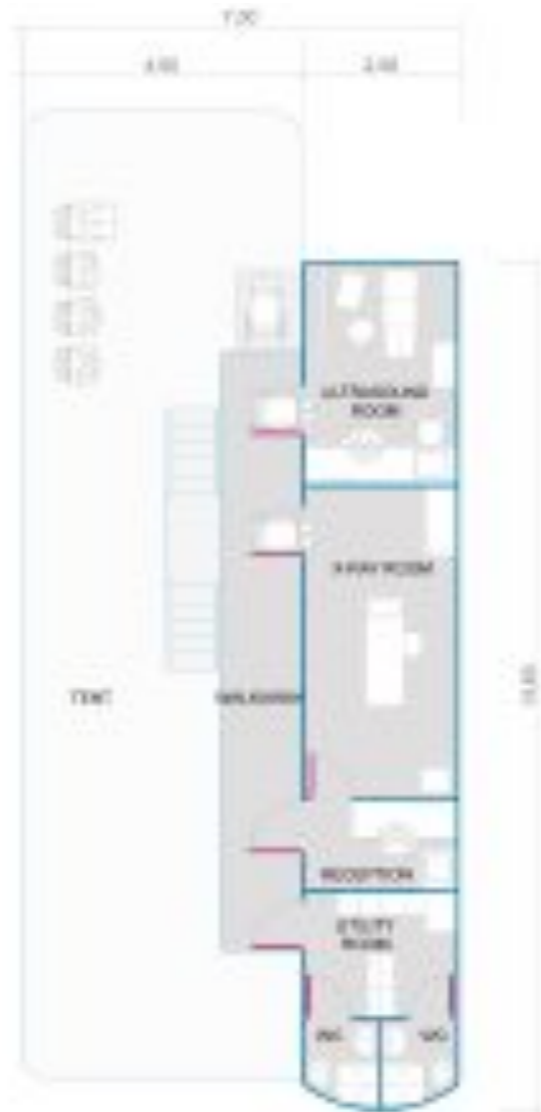
- Unit dimensions: 13.60m length, 2.50m width and 7.00m including tent
- Site location required: 16m by 10m (160m2)
- Power generator
- Air conditioning variable humidification range: -5°C to +35°C
- Patient lift and stairs
- Walkway
- Indoor area by tent
- Hydraulic levelling support

# MOBILE DENTAL CLINIC ON WHEELS

## FEATURES:

The Unit is constructed on a chassis for easy delivery. It has a complete clinic environment. It is composed by 2 dental chair rooms, 1 reception, a utility area and 2 bathrooms.

- Unit dimensions: 13.60m length, 2.50m width and 7.00m including tent
- Site location required: 16m by 10m (160m2)
- Power generator
- Air conditioning variable humidification range: -5°C to +35°C
- Patient lift and stairs
- Walkway
- Indoor area by tent
- Hydraulic levelling support



# MOBILE X-RAY AND ULTRASOUND ON WHEELS

## FEATURES:

The Unit is constructed on a chassis for easy delivery. It has a complete clinic environment. It is composed by 1 Ultrasound room, 1 X-Ray room, 1 reception, 1 utility area and 2 bathrooms.

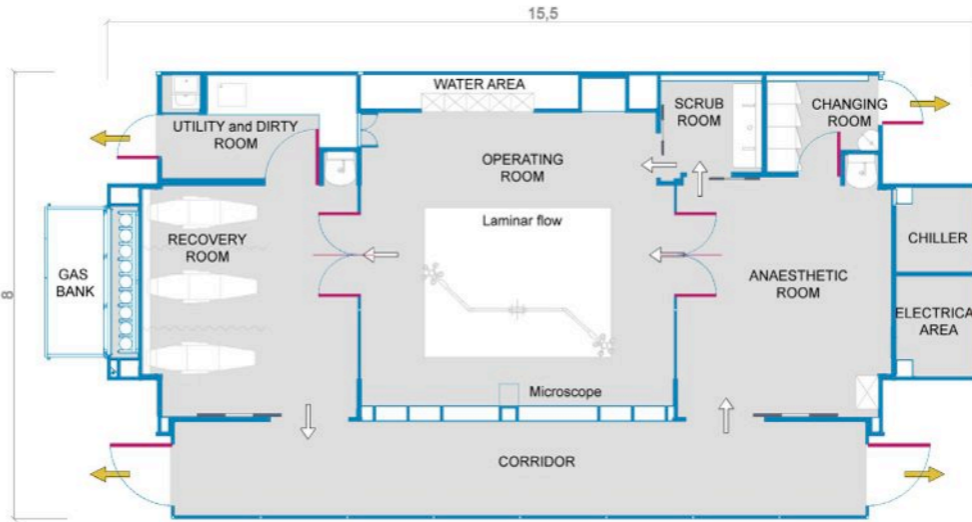
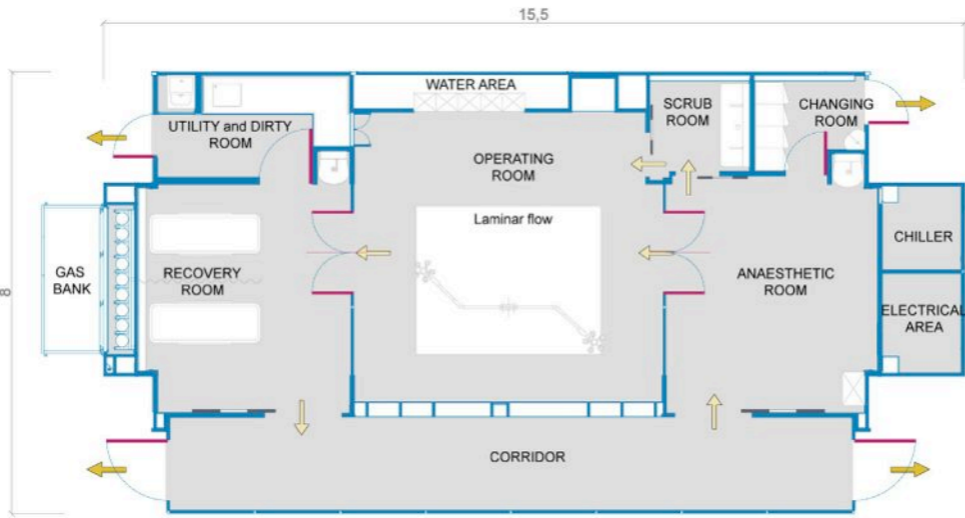
- Unit dimensions: 13.60m length, 2.50m width and 7.00m including tent
- Site location required: 16m by 10m (160m2)
- Power generator
- Air conditioning variable humidification range: -5°C to +35°C
- Patient lift and stairs
- Walkway
- Indoor area by tent
- Hydraulic levelling support

# MODULAR OPERATING ROOM WITH LAMINAR FLOW

## FEATURES:

This unit is fitted with hydraulic rams to facilitate easy loading and unloading from a flat bed low loader trailer. It is composed by an anaesthetic room, an operating room, a 3 beds first-stage recovery room, a staff changing room and an utility area. It has a complete clinic environment with CE Mark.

- Unit dimensions: 15.50m length by 8m width
- Site location required: 19m by 10m (190 m2)
- HEPA filtered environmental air which conforms to ISO 5 with up to 25 changes per hour
- Laminar flow with up to 500 air changes per hour
- Air conditioning variable humidification range: -5°C to +35°C
- Integrated full medical gas bank, vacuum and scavenging systems
- Can be connected to another modular unit or a building
- “Fast track” patient flow



# MODULAR OPERATING ROOM FOR OPHTHALMOLOGY SURGERY

## FEATURES:

This unit is fitted with hydraulic rams to facilitate easy loading and unloading from a flat bed low loader trailer. Design for surgery microscope installation. It is composed by an anaesthetic room, an operating room, a 3 bed first-stage recovery room, a staff changing room and an utility area. It has a complete clinic environment with CE Mark.

- Unit dimensions: 15.50m length by 8m width
- Site location required: 19m by 10m (190 m2)
- HEPA filtered environmental air which conforms to ISO 5 with up to 25 changes per hour
- Laminar flow with up to 500 air changes per hour
- Air conditioning variable humidification range: -5°C to +35°C
- Integrated full medical gas bank, vacuum and scavenging systems
- Can be connected to another modular unit or a building
- “Fast track” patient flow

## MODULAR OPERATING ROOM FOR DAY SURGERY

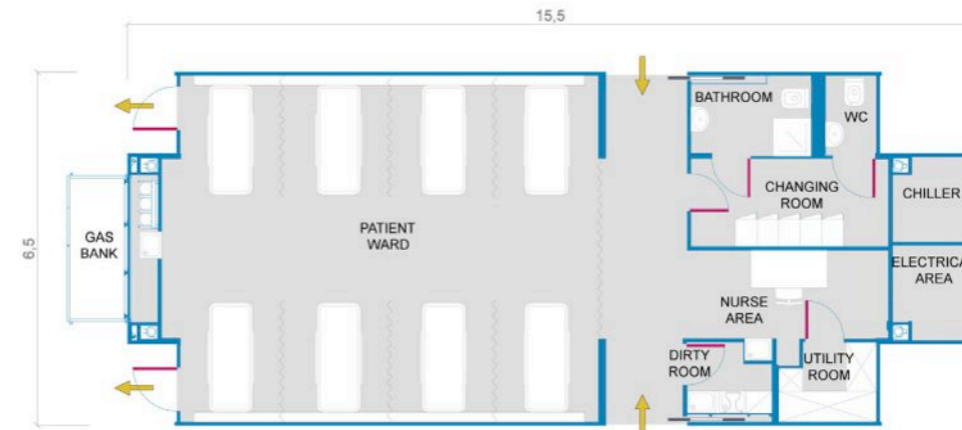
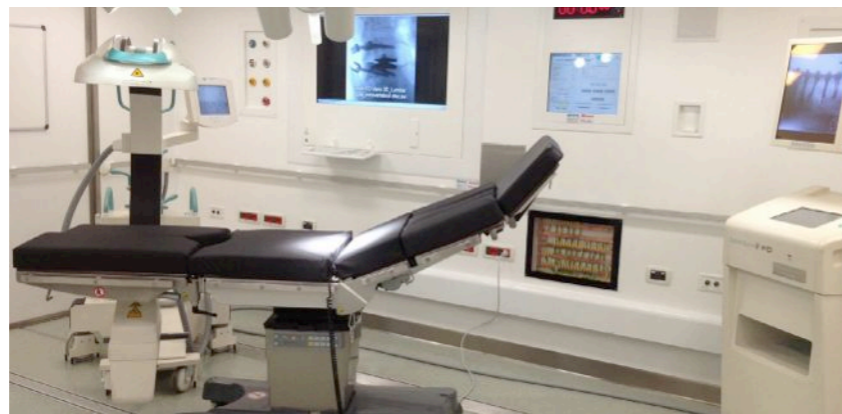
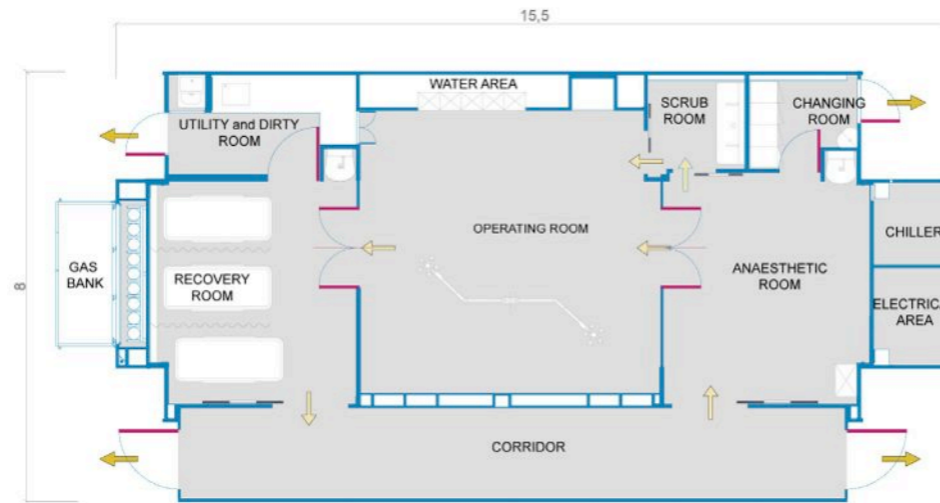
### FEATURES:

This unit is fitted with hydraulic rams to facilitate easy loading and unloading from a flat bed low loader trailer. Design for fast surgery's procedures.

It is composed by an anaesthetic room, an operating room, a 3 beds first-stage recovery room, a staff changing room and an utility area.

It has a complete clinic environment with CE Mark.

- Unit dimensions 15m length by 8m width
- Site location required: 19m by 10m (190 m<sup>2</sup>)
- HEPA filtered environmental air which conforms to ISO 7 with up to 25 changes per hour
- Air conditioning variable humidification range: -5°C to +35°C
- Integrated full medical gas bank, vacuum and scavenging systems
- Can be connected to another modular unit or a building
- "Fast track" patient flow



## MODULAR WARD

### FEATURES:

Fitted with hydraulic rams to facilitate easy loading and unloading from a flat bed low loader trailer.

It has a complete clinical environment:

- HEPA filtered environmental air filtration system
- Air conditioning variable humidification range: -5°C to +35°C

It is composed by:

- 8 ward beds
- Reception/Nurse station
- Bedhead system with oxygen, vacuum and lights
- Utility areas
- Changing room
- Toilet with wheelchair access
- Refreshment area
- Can be connected to a modular operating room to form a day surgery unit
- Unit dimensions: 15.50m length by 6.50m width
- Site location required: 19.50m by 14m (273 m<sup>2</sup>)

## MODULAR INTENSIVE CARE

### FEATURES:

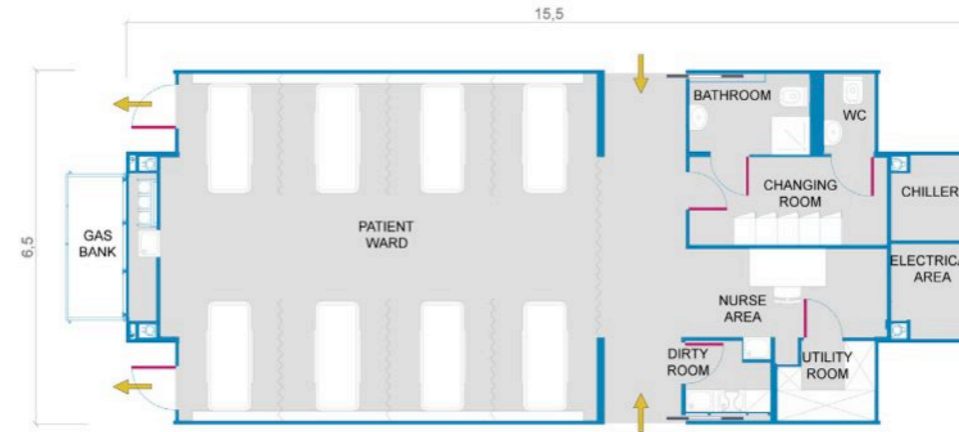
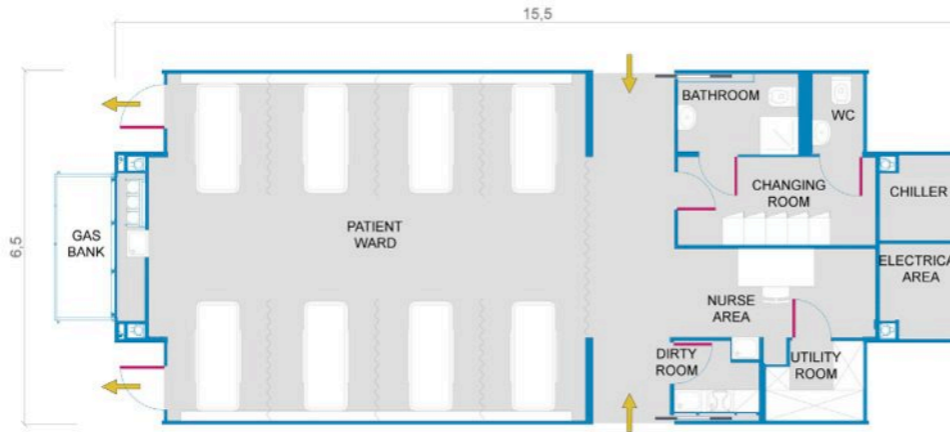
Fitted with hydraulic rams to facilitate easy loading and unloading from a flat bed low loader trailer.

It has a complete clinical environment:

- HEPA filtered environmental air filtration system
- Air conditioning variable humidification range:  $-5^{\circ}\text{C}$  to  $+35^{\circ}\text{C}$

It is composed by:

- 8 ICU beds
- Reception/Nurse station
- Bedhead system with oxygen, vacuum and lights
- Utility areas
- Changing room
- Toilet with wheelchair access
- Refreshment area
- Can be connected to a modular operating room to form an emergency unit
- Unit dimensions: 15.50m length by 6.50m width
- Site location required: 19.50m by 14m (273 m<sup>2</sup>)



## MODULAR DIALYSIS

### FEATURES:

Fitted with hydraulic rams to facilitate easy loading and unloading from a flat bed low loader trailer.

It has a complete clinical environment:

- Environmental air filtration system
- Air conditioning variable humidification range:  $-5^{\circ}\text{C}$  to  $+35^{\circ}\text{C}$
- Water filtration from potable water

It is composed by:

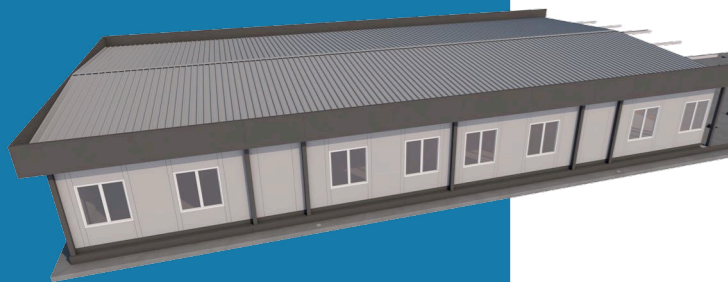
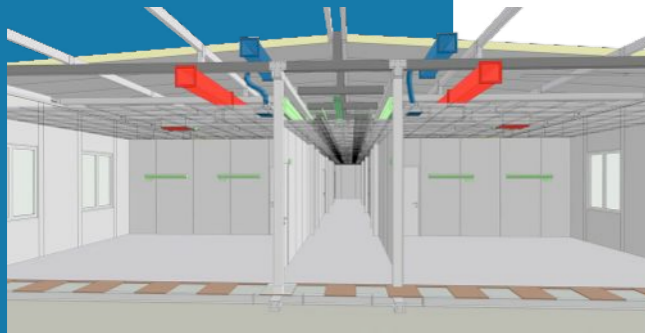
- 8 beds for dialysis
- Reception/Nurse station
- Bedhead system with oxygen, vacuum and lights
- Utility areas
- Changing room
- Toilet with wheelchair access
- Refreshment area
- Unit dimensions: 15.50m length by 6.50m width
- Site location required: 19.50m by 14m (273 m<sup>2</sup>)

# Prefabricated solutions

## DESCRIPTION

### The Prefabricated solutions we propose include:

- Base structure assembly built by galvanized steel profiles.
- Pillars realized in hot galvanized steel with powder coating, guaranteeing the lowest degradation during time.
- Steel frame prefabricated gutter and insulated panels, rainwater drainpipes and finishing.
- The roof has a slope of 7%. All steel elements will be of coated galvanized steel.
- All external windows have a thermal break.
- Different modular panels for different intended use:
  - Floor: 140mm thick insulated panels to guarantee a good thermal insulation.
  - Roof: 100mm thick insulated panels.
  - External walls: prefabricated modular panels, on which windows and doors are pre-installed in workshop.
  - Interior walls: modular panels which contain mechanical and electrical equipment already installed inside. The walls are composed of a steel structure on which cladding modules have been hooked.



## FEATURES:

- Versatility in realization: gyms, schools, healthcare facilities, etc.
- Complying with the systems, structural, climatic, seismic regulations.
- The prefabricated slab is completely watertight with its raised structure and insulated panels.
- High and low temperature resistant structure.
- Preservation of the optimum interior climate thanks to the insulated panels.
- The colours of the panels and window frames can be tailored to customer preferences.
- Warranty 15 years.

## ADVANTAGES:

- Fixed costs determined by the provision of the expected material, not variable during construction.
- Materials are designed and defined in accordance with the climatic conditions of the Country of destination.
- The qualitative level of the systems installed in the prefabricated structures is designed according to the climatic conditions and the available budget.
- Speed of installation and reduced time.
- Configuration modularity and flexibility.
- Individually removable, recoverable and reinstallable components.
- The panels are made of painted steel, washable and suitable for environments where maximum hygiene is required.



# Projects

## LIBYA – BENGASI

**Description:** **Mobile operating room on wheels**  
Design and supply of a Mobile Operating Theatre including electrical, medical gas, water and air treatment systems, customized to local climate.



## DIALYSIS CENTRE

Stable solution made by prefabricated modules with anti-seismic facility both building and interior partition, to provide 12 chairs services.

### FEATURES:

It has a complete clinical environment:

- Environmental air filtration system
- Air conditioning range: -5°C to +35°C

It is composed by:

- 12 dialysis chairs
- 1 reception
- 3 doctor offices
- 1 pharmacy
- 2 dressing rooms
- 6 toilets
- 2 toilets with wheelchair access
- 1 technical area





## PREFABRICATED MATERNITY WARD CONNECTED TO MODULAR UNITS

A bathroom equipped with disabled and patients devices providing a good wheelchair handling is annexed.

A 4 beds ward is equipped with furniture and medical devices.





## MODULAR OPERATING ROOM AND 8 BEDS WARD AND 8 BEDS EMERGENCY

### FEATURES:

Fitted with hydraulic rams to facilitate easy loading and unloading from a flat bed low loader trailer. It has a complete clinical environment:

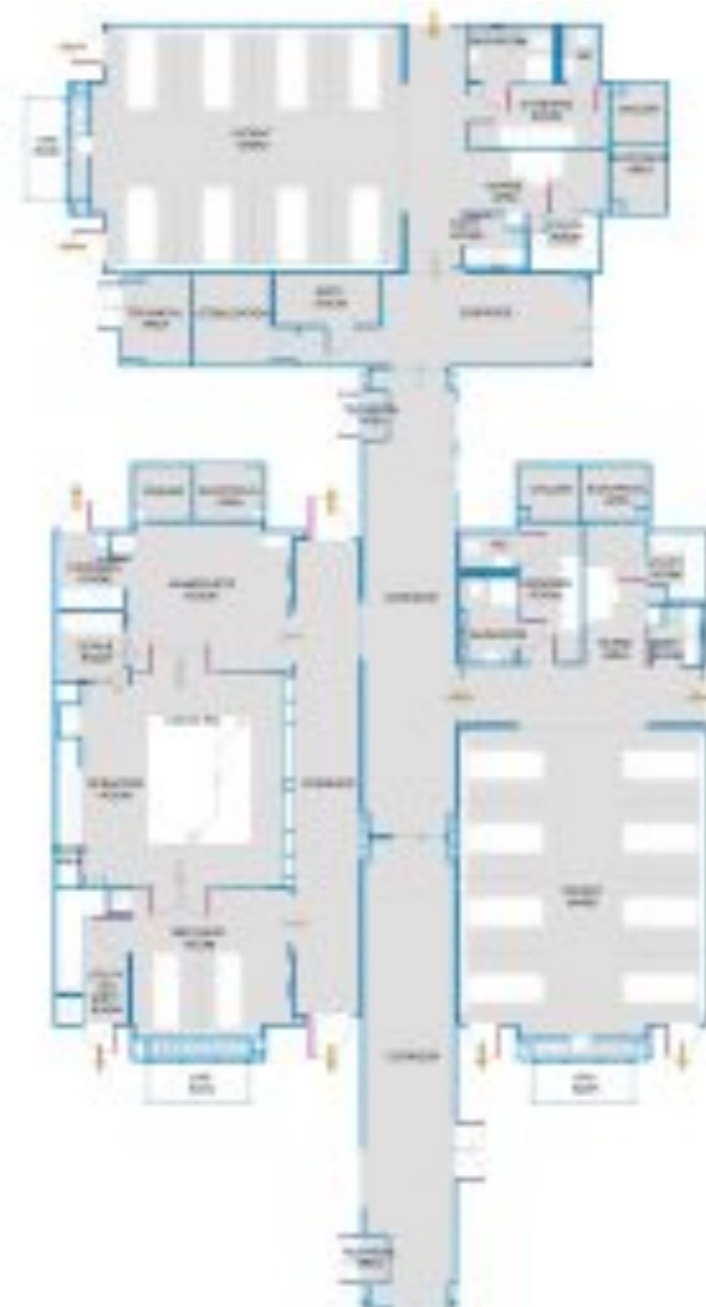
- Environmental air filtration system
- Air conditioning range:  $-5^{\circ}\text{C}$  to  $+35^{\circ}\text{C}$

It is composed by:

- 1 Anaesthetic room
- 1 Operating room
- 2 beds recovery room
- 8 beds ward
- 8 beds emergency
- Changings rooms
- Nurse station
- Utility and dirty areas
- Toilets
- Sterilization

3 x modular units dimensions: 15.50m length by 8,00 – 6,50 – 6,50m width each.

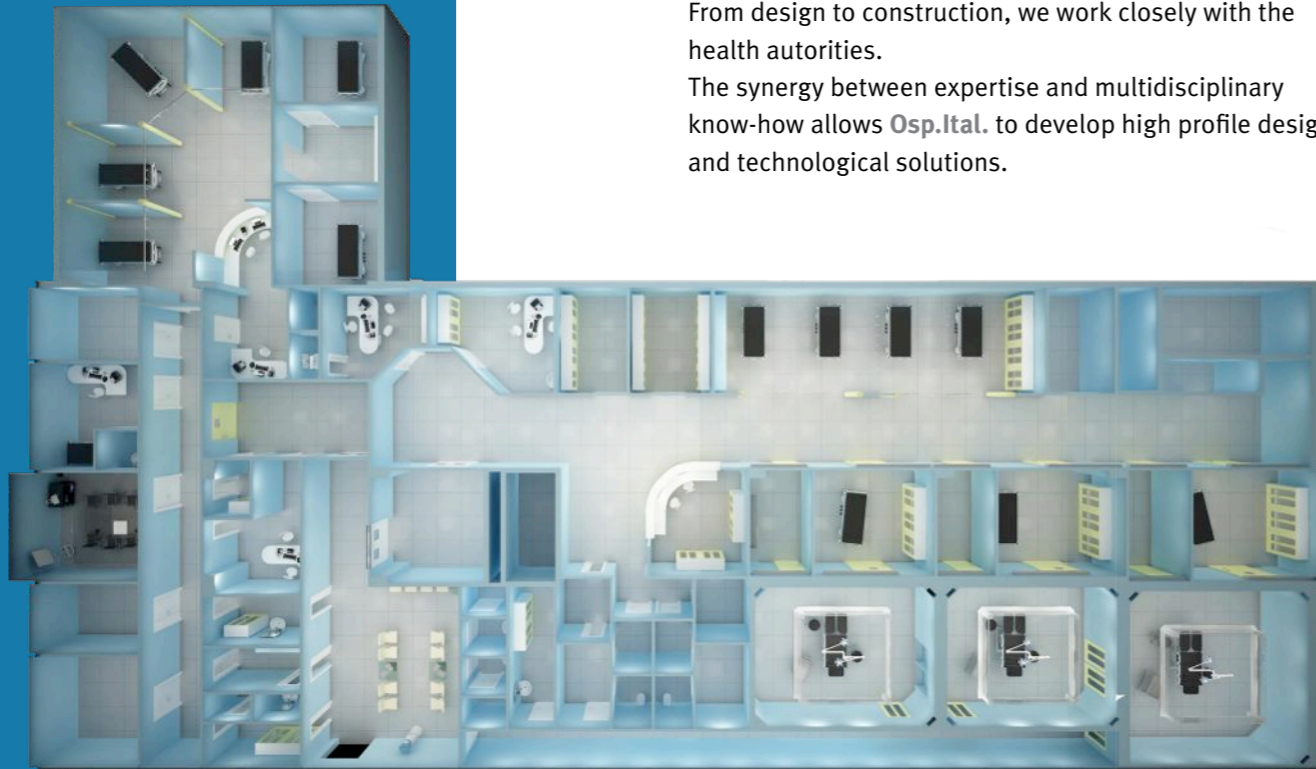
3 x connecting units dimensions: 12.20m length by 2,40m width each.



# TURNKEY SOLUTIONS

## Philosophy

Planning design also means giving clear answers to unexpressed needs.  
From design to construction, we work closely with the health authorities.  
The synergy between expertise and multidisciplinary know-how allows **Osp.Ital.** to develop high profile design and technological solutions.

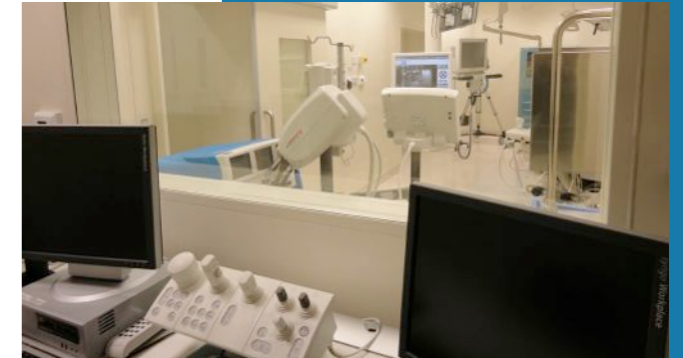


## A complete proposal

We develop turnkey solutions from the engineering to the installation of:

- Electrical
- Air conditioning
- Water plants
- Lighting and Medical gas systems.

We also select and supply technological devices and medical furniture.



## Interior prefabricated solutions



### PREFABRICATED SOLUTIONS FOR INTERIOR PARTITIONS IN HOSPITALS

Structures, panels and built-in furniture have the following features:

- Walls resistant to frequent disinfection
- Wall-inbuilt furniture with integrated installations (i.e. Air-Con, Medical Gas, Electric etc.)
- Perfect integration of medical equipment
- Solution allows fast update with new technology
- Speedy installation and High Quality assured



## Medical equipment

### OPERATING ROOMS HYBRID OPERATING ROOMS

Prefabricated Operating Theatre:

- Day surgery room
- Hybrid operating room
- Integrated operating room
- Orthopedic operating room
- ISO 5 with Laminar Flow solutions



## Projects

### UMBERTO I HOSPITAL MAURIZIANO – TURIN, ITALY

#### Description: **Hybrid operating room**

Design and turnkey execution of a hybrid operation room, inclusive of all dedicated systems, laminar flow, radiant walls and digital angiograph mounted on robot. Installation of an integration system to control equipment, ambient light, music, audio and patient data.



### MEDICAL DIAGNOSTIC IMAGING

#### Prefabricated Diagnostic Room:

- MRI – Magnetic Resonance Imaging
- CT Scan
- PET-SPECT
- Digital Angiography



## DOLOMITI SPORT CLINIC – ORTISEI, TRENTINO ALTO ADIGE

### Description: **Integrated operating rooms**

Design and execution of a new surgical unit with two integrated OR's. Works included all technical systems and related recovery ward and sterilization station. Both rooms are equipped with medical equipment and furniture.



## UNIVERSITY HOSPITAL OF DAMAS – SYRIA

### Description: **Laminar Flow theatre and transplant bone marrow unit**

Turnkey execution of cardio-surgery ward, two operating rooms, bone marrow transplant ward and blood bank.





## UNIVERSITY “MAGNA GRECIA” – CATANZARO, CALABRIA

### Description: **3T PET - MRI**

Design and turnkey execution for the installation of a 3T PET-MRI system. Hybrid imaging technology, MRI soft tissue morphological imaging and PET functional imaging, used in oncology, cardiology, neurology.



## UMBERTO I HOSPITAL MAURIZIANO – TURIN, ITALY

### Description: **CT Scanner**

Turnkey execution and installation of SPECT-CT in the Nuclear Medicine department.

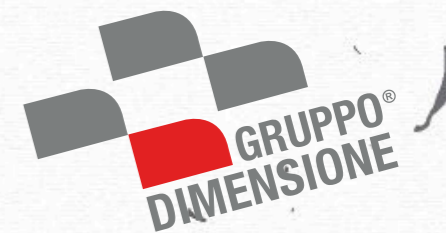
# FACILITY MANAGEMENT

## Philosophy

We supply maintenance services with our specialized technicians able to cover construction, electrical and mechanical installations, to meet customer needs and provide a high level of care.

A remote control solution is provided to ensure and supervise the proper performance of the Mobile and Modular Units.

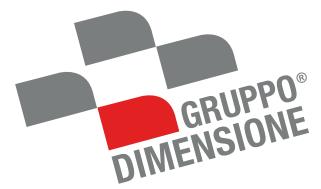




concept, layout:  
gruppo thema progetti  
[www.gtp.it](http://www.gtp.it)

project coordinators:  
Mara Graneris  
Claudio Majavacca

THANKS



Registered office : Via O. Antinori, 6 Torino  
Headquarters:  
Via VIII Marzo 8, Grugliasco (Turin)  
Tel. +39 011.40.66.111/Fax +39 011.40.66.112  
E-mail:  
[amministrazione@gruppodimensione.com](mailto:amministrazione@gruppodimensione.com)  
website:  
[www.gruppodimensione.com](http://www.gruppodimensione.com)  
Branch in Rome: Via Salaria 719/719a  
Branch in Milan: Via Leon Battista Alberti 5  
Branch in Saint Genis Pouilly (FR):  
75, Rue Louis et Auguste Lumière - Technoparc