



**Ningbo Tower Machinery Co., Ltd**



**Ningbo Tower Machinery Co., Ltd** is a group of manufacturing facilities over 14 years, offering one-stop solution for quality mechanical products with total lower cost in China. We can make all kinds of metal parts, such as laser cutting parts, stamping parts, CNC machining parts, welding parts, forging parts, especially assembly parts.

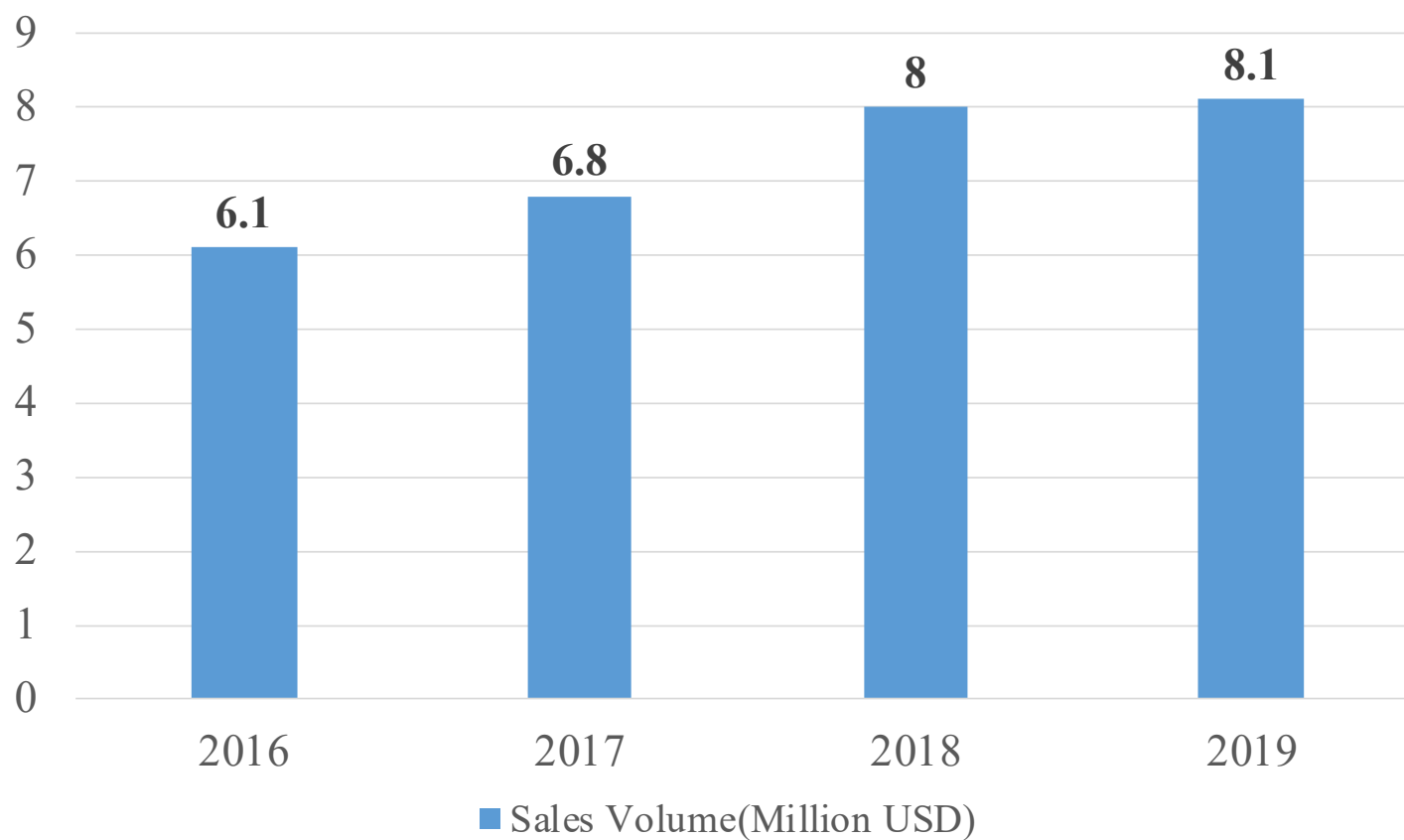
Product market range covers auto industry, medical industry, agricultural machinery, sport industry and so on.

We have strong capability of design, development and manufacture of tooling and we can produce the products according to buyers' drawings and samples.

We will purchase new machines continually when business grows.

Our strategy is Customer and Quality first!

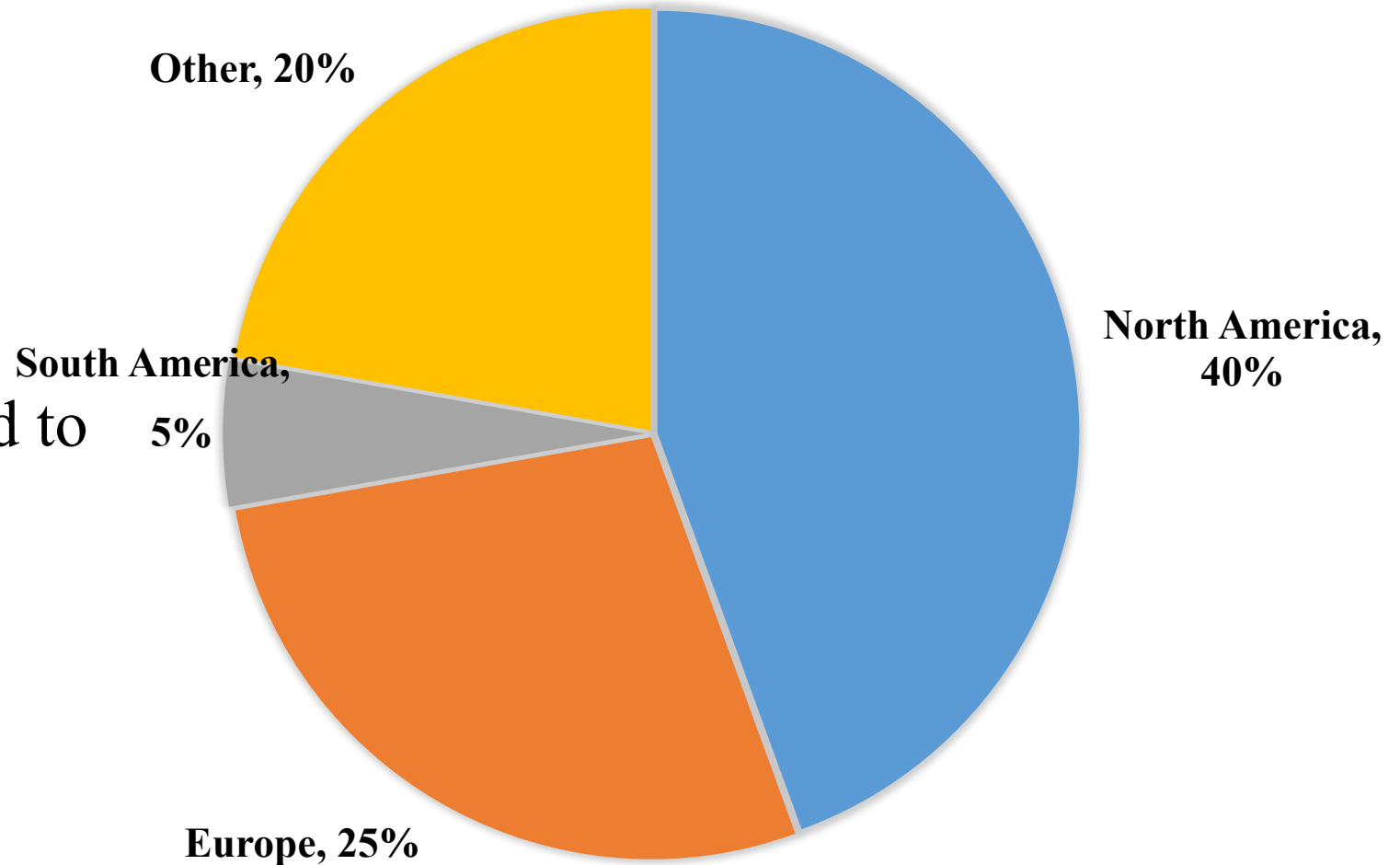
## Sales Volume of last three years(USD)



**90%** Exportation

Our products have  
mainly been exported to  
North America and  
Europe

**EXPORT RATE**





**Tower Industry**  
YOUR MANUFACTURING BASE IN CHINA



## Trumpf Laser Cutting Machines



# Tower Industry

YOUR MANUFACTURING BASE IN CHINA



Stamping Machines



# Tower Industry

YOUR MANUFACTURING BASE IN CHINA



Two Kuka Welding Robots



Tig Welding, Mig Welding

**Tower Industry**  
YOUR MANUFACTURING BASE IN CHINA

CNC Center Machines





**Tower Industry**  
YOUR MANUFACTURING BASE IN CHINA



CNC Turning Machines

**Tower Industry**  
YOUR MANUFACTURING BASE IN CHINA



Large CNC Turning Machines



## Centerless Grinding Machines



Flat Grinding Machines



**Tower Industry**  
YOUR MANUFACTURING BASE IN CHINA

## Sheet Metal Bending Machines



**Tower Industry**  
YOUR MANUFACTURING BASE IN CHINA



Stress Release Machines



Shearing Machines

**Tower Industry**  
YOUR MANUFACTURING BASE IN CHINA



Sheet Rolling Machines

Sand Blasting Machines





**Tower Industry**  
YOUR MANUFACTURING BASE IN CHINA



Sawing Machines



Hydraulic Press Machines

**Tower Industry**  
YOUR MANUFACTURING BASE IN CHINA

## Assembly Line

We are good at making assembly parts





# Tower Industry

YOUR MANUFACTURING BASE IN CHINA

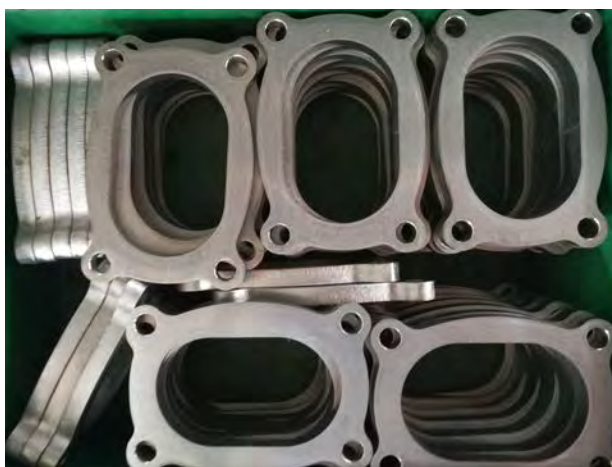


Showroom



**Tower Industry**  
YOUR MANUFACTURING BASE IN CHINA

90% Exhaust Flanges of Ningbo are producing from our factory



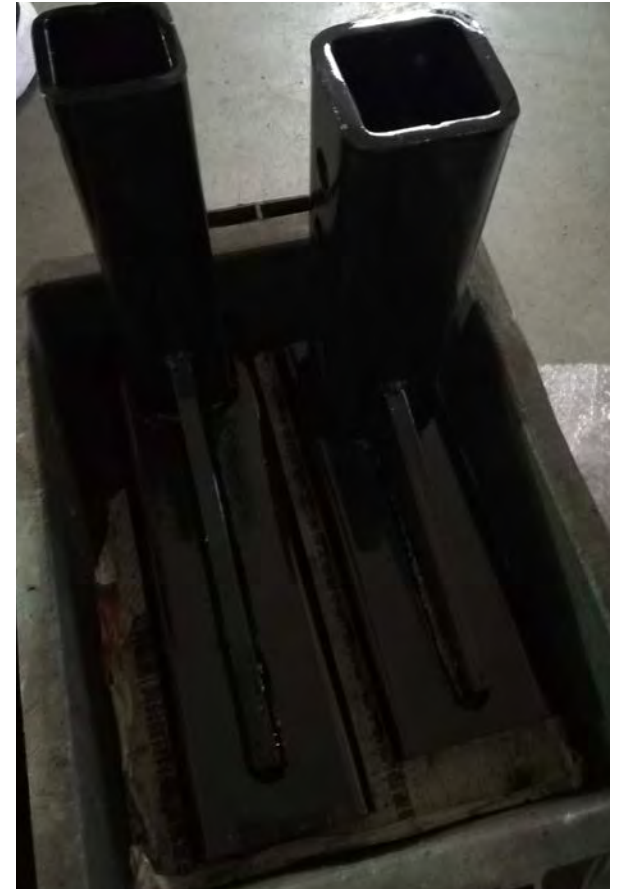


**Tower Industry**  
YOUR MANUFACTURING BASE IN CHINA

## Trailer Parts



## Trailer Parts





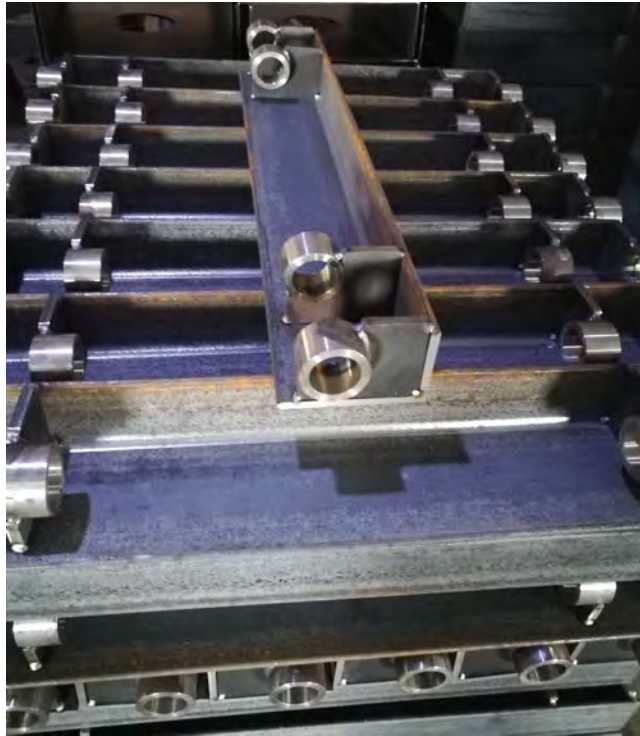
**Tower Industry**  
YOUR MANUFACTURING BASE IN CHINA



Welded Parts



**Tower Industry**  
YOUR MANUFACTURING BASE IN CHINA



Welded Parts



**Tower Industry**  
YOUR MANUFACTURING BASE IN CHINA

## Machine Housing



## Elevator Sheet Metal Parts



**Tower Industry**  
YOUR MANUFACTURING BASE IN CHINA

## Oil Tank

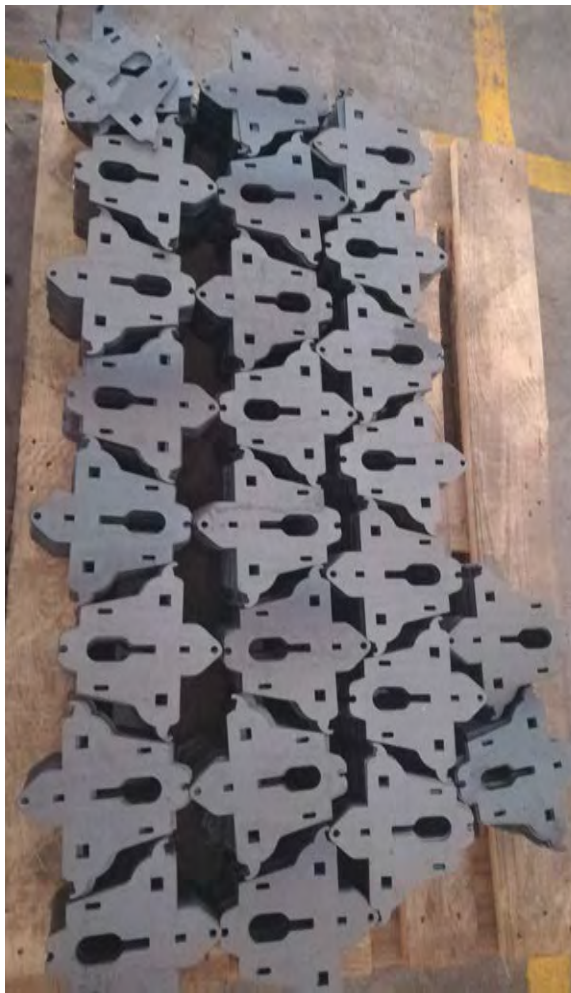


## Laser Cutting Parts



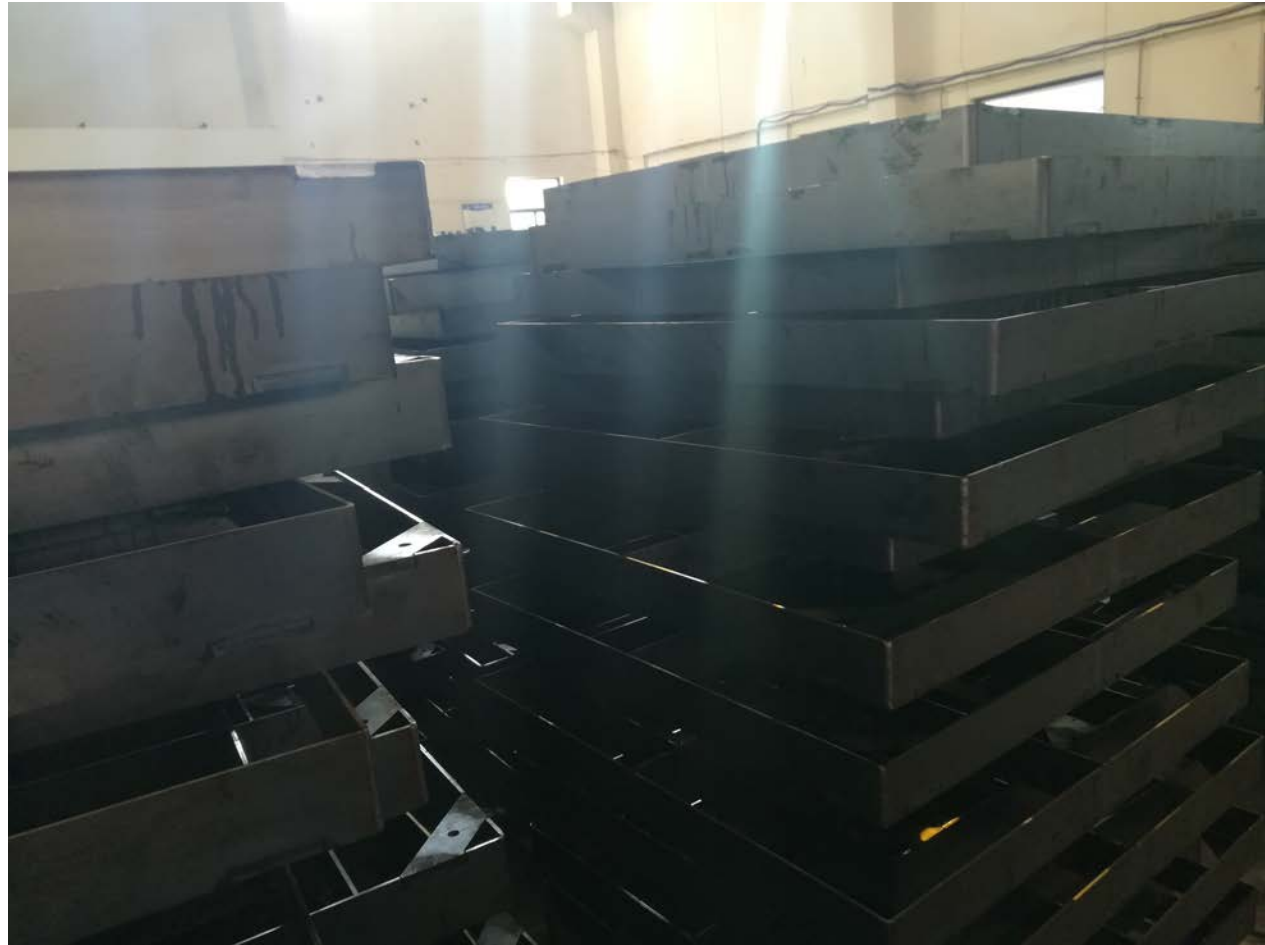


## Laser Cutting Parts





## Sheet Metal Fabrication



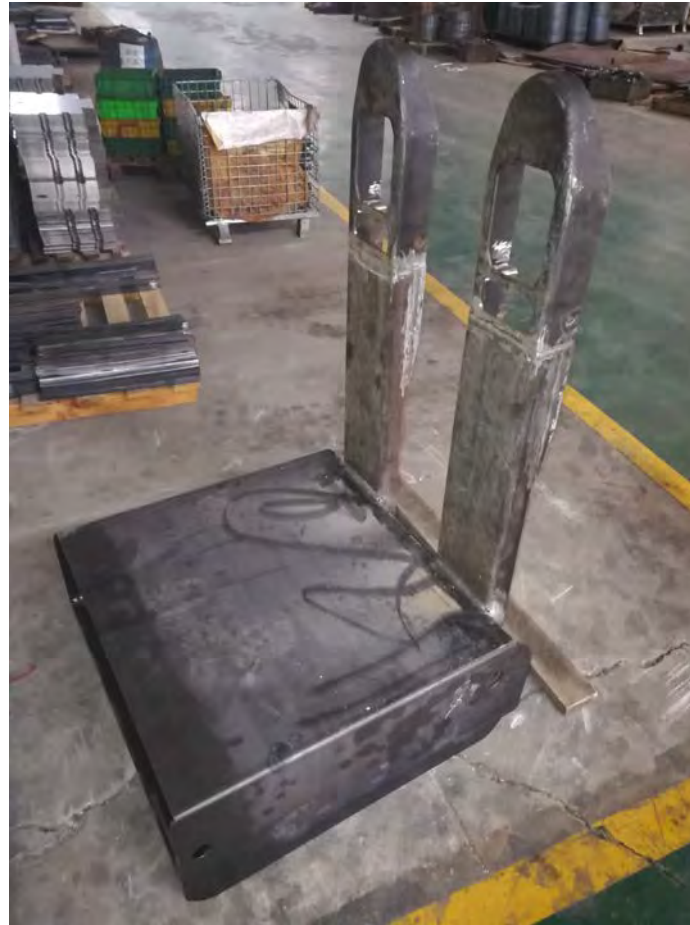
**Tower Industry**  
YOUR MANUFACTURING BASE IN CHINA

## Stamping Parts





## Assembly Parts





# Tower Industry

YOUR MANUFACTURING BASE IN CHINA



Assembly Parts





**Tower Industry**  
YOUR MANUFACTURING BASE IN CHINA

## Assembly Parts

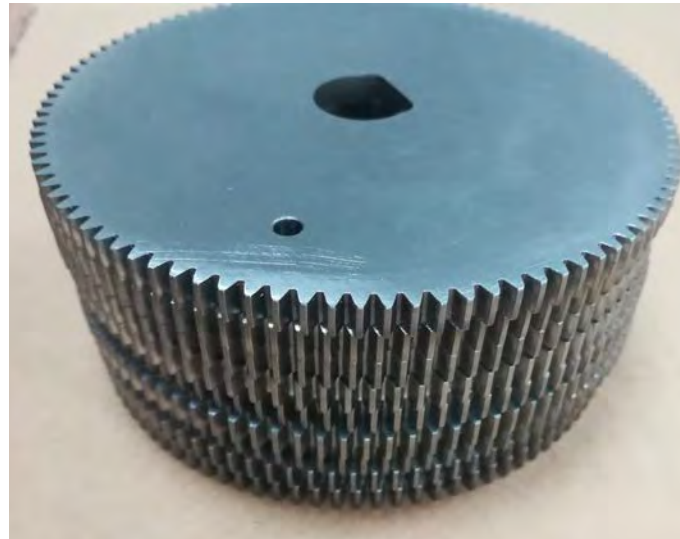




**Tower Industry**  
YOUR MANUFACTURING BASE IN CHINA

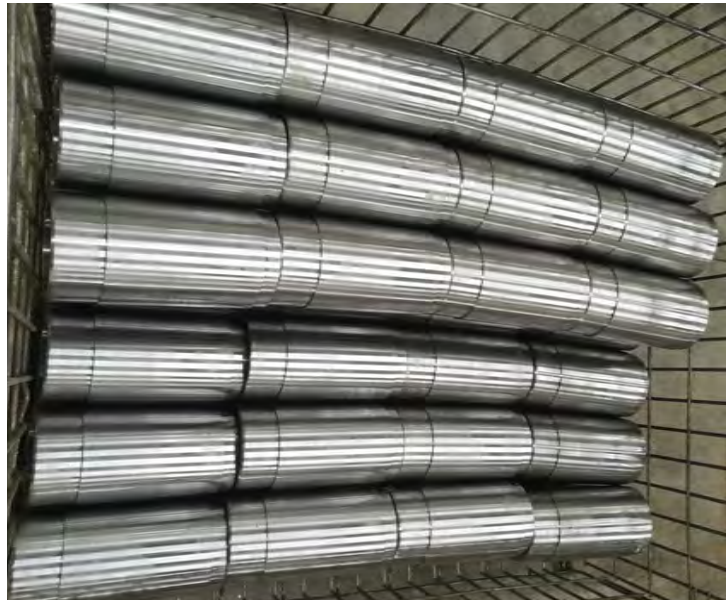


Gear





## Machining parts





## Machining parts





**Tower Industry**  
YOUR MANUFACTURING BASE IN CHINA



Machining parts



**Tower Industry**  
YOUR MANUFACTURING BASE IN CHINA



Roughness tester

Hardometer



Projector



Rm.1205, No.2 Building of Guangshun South Street No.16, Chaoyang District, Beijing, P.R. China 100102

Thank you!

**Ningbo Tower Machinery Co., Ltd**

Tel: +86-574-88136586

Mobile/Skype/Wechat: +86-18067397316

E-mail: Lily@tower-industry.com

Websites: <https://www.tower-industry.com/>