

A new world of beauty

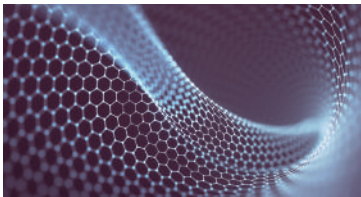
Service manual for *Grammix CMC Clinic*



Shuyl professional is a Korean Beauty Start up in applying Graphene oxide into hair products first ever in the world.

What is Graphene?

Graphene is an allotrope of carbon in the form of a single layer of atoms in a two-dimensional honeycomb lattice with 0.2nm in thickness. It is quite in stable state both physically and chemically, beign safe to human.



- Conducts electricity 100 times better than copper
- Delivers electrons about 100 times faster than silica
- Havs about double the thermal conductivity of diamond and strength

Benefits of Graphene

- 1 / When heat-treated for perm or dyeing, Graphene-treated hair endures any excessive heat, so reducing the damage to minimal level.
- 2 / Forms the barrier between water and air to make it water-proof, keeping hair hydrated and healthy.
- 3 / Imparts the healthy look and shine thanks to Graphene.

CORE VALUES

Shuyl professional is committed to pursuing for the best interests of customers and salons and growing together based on the unchangeable trust.

Gramix CMC Clinic - All-in-one hair shining moisture essence

What makes It different?

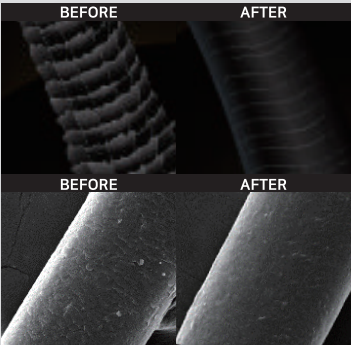


Graphene, a new type of carbon fiber material transforms hair to smooth and healthy locks.

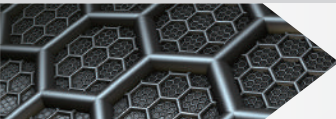
Quick and Easy use to revive the extra volume and smoothness. Versatile moisture hair essence to use for all sorts of chemical services such as perm and color with least damage possible to hair.

- ✓ Gives sleek texture by Graphene oxide
- ✓ Prevents hair color and protein from getting drained
- ✓ Suits to the perfect mixture with all chemicals
- ✓ No for Paraben, artificial color, phenoxy ethanol and mineral oil

Features & Effects



| | | |
|---------|-----------|--|
| Effects | Treatment | Enhances cuticles, Sheen, volume |
| | Color | Vivid color, Bright shades |
| | Perm | Adds curl elasticity and shine, Curl lasting |



Graphene oxide keeping in stable chemical structure for lasting results

Dipropylene Glycol works both to haul water and repress dehydration



Low-molecular protein, collagen and silk amino acids for nutrition

One-Step Hair Solution

A new paradigm in hair technology
Treatment+Clinic+Essence



Gramix Cuticle Dr. Shampoo

What makes It different?



Treats hair to smooth and healthy care without hair conditioner, treatment and essence.

Many people in modern times are getting worried with thinning, frail and volumeless hair let alone hard to comb through due to severe damage. So here it is as a reliable trouble-shooter!

- ✓ Gently cleanses scalp and hair with 96% of nature-derived ingredients
- ✓ Protects hair thanks to Graphene contained with exceptional heat resistance and physical strength
- ✓ Nourishes hair with 20 kinds of amino acids
- ✓ Suits to all family members with hypoallergenic formulation
- ✓ Low acid shampoo for safe use of scalp and hair

Features

Shikakai fruit extracts

- Nicknamed as “Fruits for the hair”
- Used in India as natural hair treatment
- Contains vitamin A,C,D,K that helps scalp hygiene, clarifying and hydrating sufficiently

Coconut extracts

- Lauded for its best moisturizer that prevents dry scalp being flaky
- Vitamin contained to act as anti-oxidant
- Antimicrobial, Antifungal properties

힐러

What makes It different?



Restore back to healthy cycle of hair with all-in-one care essence for scalp and hair.

Contained 20 kinds of amino acids and collagen, it gives the optimal care for damaged hair from chemical services. 7 peptides complex guarantees the effective care of scalp.

- ✓ Has no effects on any chemical services, Controls flake and sebum
- ✓ Mildly peels off, tones and hydrates scalp

Salicylic acid

- Removes flakes
- Helps to melt away sebum & wastes
- Regulates sebum secretion and soothes irritation from oily scalp

Galactomyces extracts

- Byproduct of fermented yeast
- Efficient in nourishing, hydrating and controlling flakes and scalp troubles



BEFORE

AFTER

GUIDE RECIPE BOOK

CLINIC



Apply to dry hair to
make it fully wet



Hot blow dry to 90%



Glide it through with flat iron
at 100~140 Celsius degree
Repeat 2 to 3 times with little tension



Shampoo with Cuticle
Dr. Shampoo and finish

COLOR



Apply to damaged parts
and blow dry



Mix Gramix CMC with color or
bleach in proportion to damage level
(10~30% of color or bleach to be added)



Apply Gramix CMC again
before rinse out



Shampoo with Cuticle
Dr. Shampoo and finish

COLD PERM



Apply Gramix CMC to all over
hair and blow dry



Mix Gramix CMC with perm lotion #1
in proportion to damage level
(10~30% to be added)



After neutralizing,
apply Gramix CMC again



Shampoo with Cuticle
Dr. Shampoo and finish

HEAT PERM



Apply Gramix CMC to all over
hair and blow dry



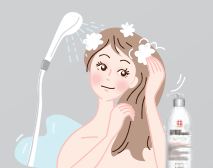
Mix Gramix CMC with perm lotion #1
in proportion to damage level
(10~30% to be added)



Strand test.
(softening or hardening)



Shampoo with Cuticle
Dr. Shampoo and finish



Rinse out with Cuticle
Dr. Shampoo and finish



Mix Gramix CMC with neutralizer
and apply at 10 to 30% (Optional)



Press with flat iron for rebond
straight or wind up
the rods for digital perm



Apply Gramix CMC
and finish with blow dry

Hair cut with treatment



Use Gramix CMC as hair mist
for hair cut



Hot blow dry for drying completely



Shampoo with
Cuticle Dr. Shampoo and finish

Hair cut for scalp peeling



Apply ShuVL Healer onto scalp
No rinse out, then cut hair



Shampoo with
Cuticle Dr. Shampoo and finish



Apply ShuVL Healer lightly onto scalp
No rinse out

Dual care program for scalp and hair



Apply ShuVL Healer
onto scalp
No rinse out, then cut hair



Apply Gramix CMC to dry hair
and use hot blow dry fully



Press with flat iron
at 120~140 degree



Shampoo with
Cuticle Dr. Shampoo and finish



Apply ShuVL Healer
lightly onto scalp
No rinse out

Daily scalp care



Shampoo thoroughly for 3 min
with Cuticle Dr. Shampoo



Apply ShuVL Healer lightly onto scalp
No rinse out.



Use hot tool for styling

Daily Hair care



Shampoo thoroughly for 3 min
with Cuticle Dr. Shampoo



Apply Gramix CMC on damp
hair and scalp as well

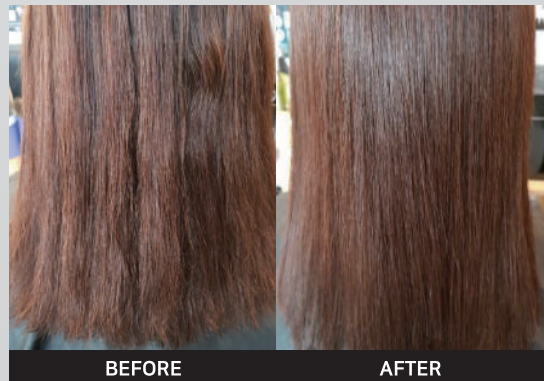


Use hot tool for styling

Before & After with Cuticle Dr. Shampoo



Before & After with Gramix CMC Clinic



1. Apply Gramix CMC to make hair fully wet
2. Use flat iron 2 to 3 times at 140 degrees slowly and with no tensions
3. Shampoo with Cuticle Dr. Shampoo and towel dry
4. Use any type of hair essence and finish

1. Apply Gramix CMC to make hair fully wet
2. Use flat iron 2 to 3 times at 140 degrees slowly and with no tensions
3. Shampoo with Cuticle Dr. Shampoo and towel dry
4. Use any type of hair essence and finish

Gramix Color (Before/ After)



1. Apply Gramix CMCm onto dry hair
2. Mix it with color and oxidant at 1:1:0.2
3. Leave it naturally for 35min. Shampoo with Cuticle Dr. Shampoo and finish

1. Apply Gramix CMC and blow dry
2. Mix it with Curves Nine or Alpha Magic #1 with from 10 to 30% of perm lotion. Apply the mixture for the development.
3. Strand test (softening or Hardening)
4. Rinse out with Cuticle Dr. Shampoo
5. Apply Gramix CMC on wet hair
6. Press with flat iron for rebond straight or wind up with heated rods for digital perm
7. Mix Gramix CMC with neutralizer varying from 10 to 30% (in proportion to damage level)
8. Shampoo with Cuticle Dr. Shampoo and finish



youtube.com/user/ljs9853/featured



band.us/@thsrkqkd



[@shuvlprofessional_official](https://www.instagram.com/shuvlprofessional_official)

<http://shuvlprofessional.co.kr/>

