



## Chemicals

For Process Stability and Improved Production Equipment



[www.impreglon.net](http://www.impreglon.net)

[www.impreglon.net](http://www.impreglon.net)



## Surface Protection for Better Processing

The automotive industry, with its continuous innovations, demands better and better performance. Chemical processes are sensitive to all outside impurities and contaminants that enter into the equipment and process as it moves throughout the plant. In addition, the protection of production components in contact with aggressive media represents an extreme challenge for today's coating systems. These coating systems must be absolutely non-porous and resistant against various chemicals for many years. Easy to clean, high temperature resistant, "non-stick" surfaces exceed the requirements for the toughest environments.

With custom-tailored coating solutions, worldwide technical expertise, and 20 years experience in the field of industrial coatings, Impreglon is the ideal partner for the chemical industry.

### Blower Housing

- Compression of aggressive process gas
- High chemical resistance
- Easy clean
- High temperature resistance

### Diffusor Plate

- Improvement in flow speed
- High chemical resistance
- Good impact absorption
- Easy clean
- High wear resistance

### Impeller

- Transport of aggressive chemicals
- High chemical resistance
- Easy clean
- High wear resistance

### Size Tub

- Handling of aggressive adhesives
- Nonstick surface
- Easy clean
- High chemical resistance

### Silencer

- Noise reduction in production processes
- High chemical resistance
- Easy clean
- High temperature resistance

### Valve Body

- Flow control of chemicals
- High chemical resistance
- Easy clean
- Good wear resistance

### Mixing Vessel

- Mixing process for paint and varnishes
- Nonstick surface
- Easy clean
- High chemical resistance

### Reactor

- Chemical process equipment
- Easy clean
- Good chemical resistance
- High temperature resistance







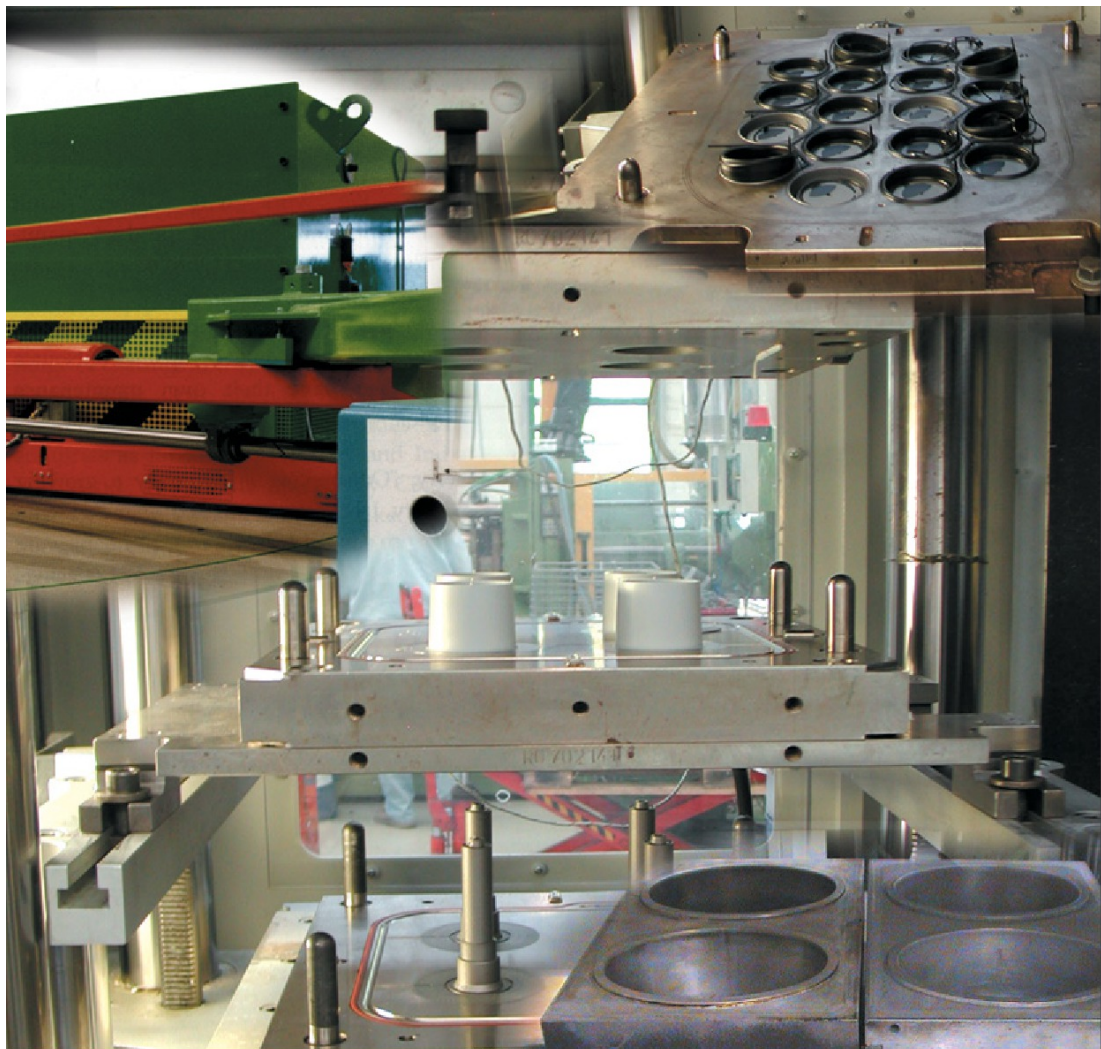
## Rubber and Plastics

For Troublefree Processing and Easy Mold Release



[www.impreglon.net](http://www.impreglon.net)

[www.impreglon.net](http://www.impreglon.net)



## Abrasion Resistant Release Coatings with Excellent Longevity

Increasing production speeds and more complex components made of rubber and plastics demands constant improvements of the surface properties of machine components. Aside from good wear resistance and mold release, environmental aspects such as the replacement of release sprays, plays a dominating role in the development of new long-lasting surface coatings. Reliable release coatings improve cycle times, drastically reduce cleaning cycles and increase productivity. Impreglon offers a variety of high-performance surfaces with unique properties or combinations thereof: excellent release, good sliding, extreme wear resistance, high temperature resistance.

### Tire Segment

- Production of profiling segments and complete tires
- Excellent mold release
- Easy cleaning
- Good wear resistance

### Perforating Roll

- Converting of rubber and plastics in sheet and web form
- Excellent release
- Good sliding
- Easy cleaning
- High wear resistance

### Molding Tool

- Production of sports gear
- Excellent release
- Easy cleaning
- Good wear resistance

### Laminating Mold

- Assembly of interior car doors
- Excellent release
- Easy cleaning
- Good wear resistance

### Styrofoam Mold

- Production of ceiling and wall trimmings
- Excellent release
- Easy cleaning
- Good wear resistance

### Molding Die

- Production of precision components made of rubber
- Excellent release
- Good sliding
- Easy cleaning
- FDA compliant

### Foaming Mold

- Production of protection pads made of foam rubber
- Excellent release
- Easy cleaning
- High wear resistance

### Extrusion Die

- Mold blowing of plastic films
- Good release
- Excellent sliding
- Easy cleaning
- High wear resistance



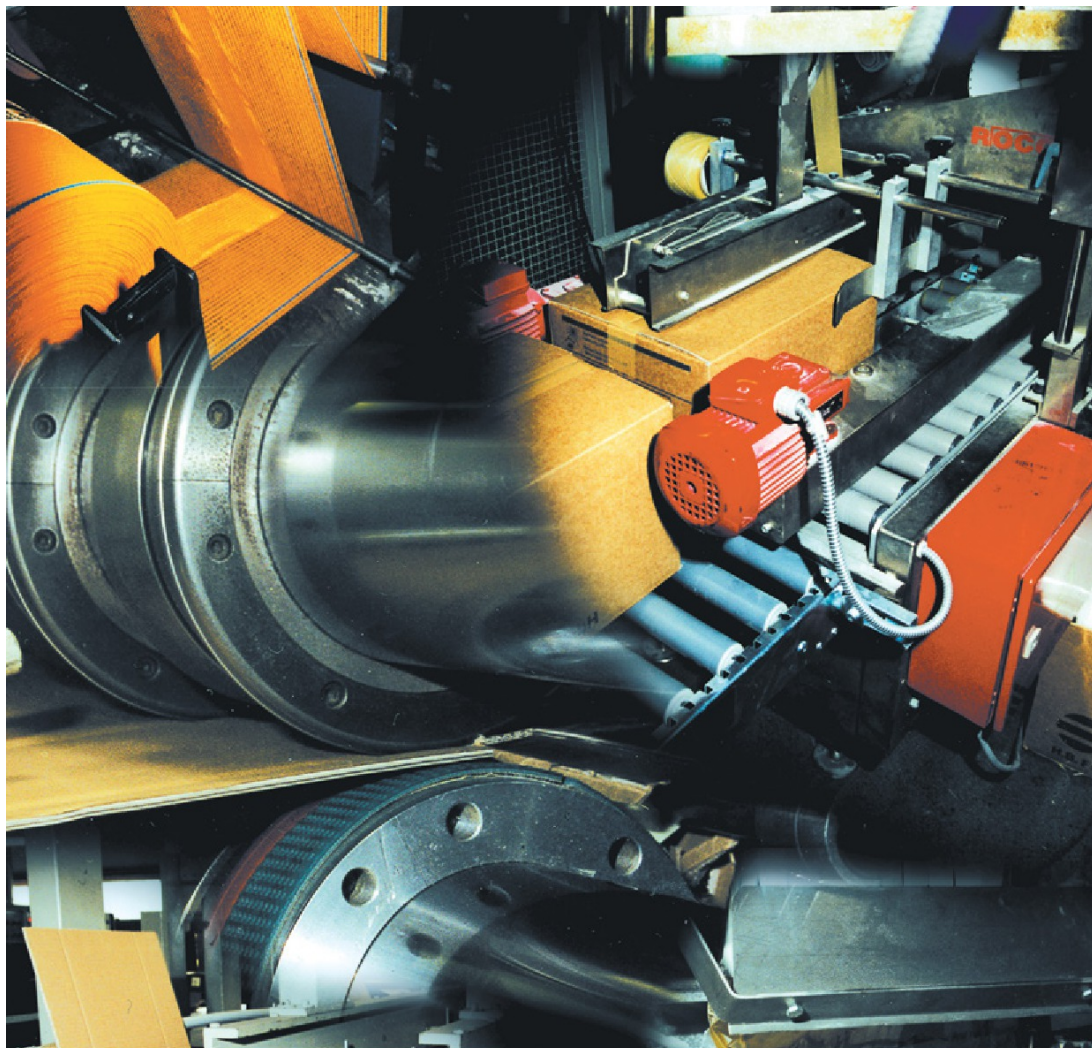




## Tailor-Made Solutions for Optimizing Packaging Processes



FA 1000 08/2012



## Engineered Surfaces for Better Packaging Processes

Good packaging is a necessity. It protects the product and promotes sales. However, in order to create an attractive presentation, companies often spend more money on packaging than on the product. The big question becomes, how to save money on packaging costs without impacting the image that the package creates? The answer is: Reduce downtime created by products, film and adhesive sticking on packaging equipment. Make wear components last longer so they do not have to be replaced as often. Eliminate friction so line speeds can be increased. Get products through the weighing and filling stage quickly and without build-up so that tare give away (overfill to insure package weight) is reduced. Make cleaning faster and components more resistant to cleaning solutions.

### Weigh Hopper

- Accumulation of sticky and abrasive materials
- Reduced buildup, improved material flow, increased line speed, high abrasion resistance and low C.O.F.

### Heat Seal Plate

- Sealing medical instrument packages
- Nonstick, light color, contamination detection and wear resistance

### Folder

- Guides for sticky films
- Excellent wear resistance combined with nonstick and sliding
- Easy clean and improved process speeds
- FDA compliant

### Heat Seal Bars

- Sealing of packaging films
- Good nonstick and good wear resistance at high temperatures
- FDA compliant

### Filling Trough

- Fills and guides products into scales, hoppers and transport pans
- Reduced buildup, easy clean, noise reduction, low C.O.F and high abrasion resistance
- FDA compliant

### Vibratory Feed tray

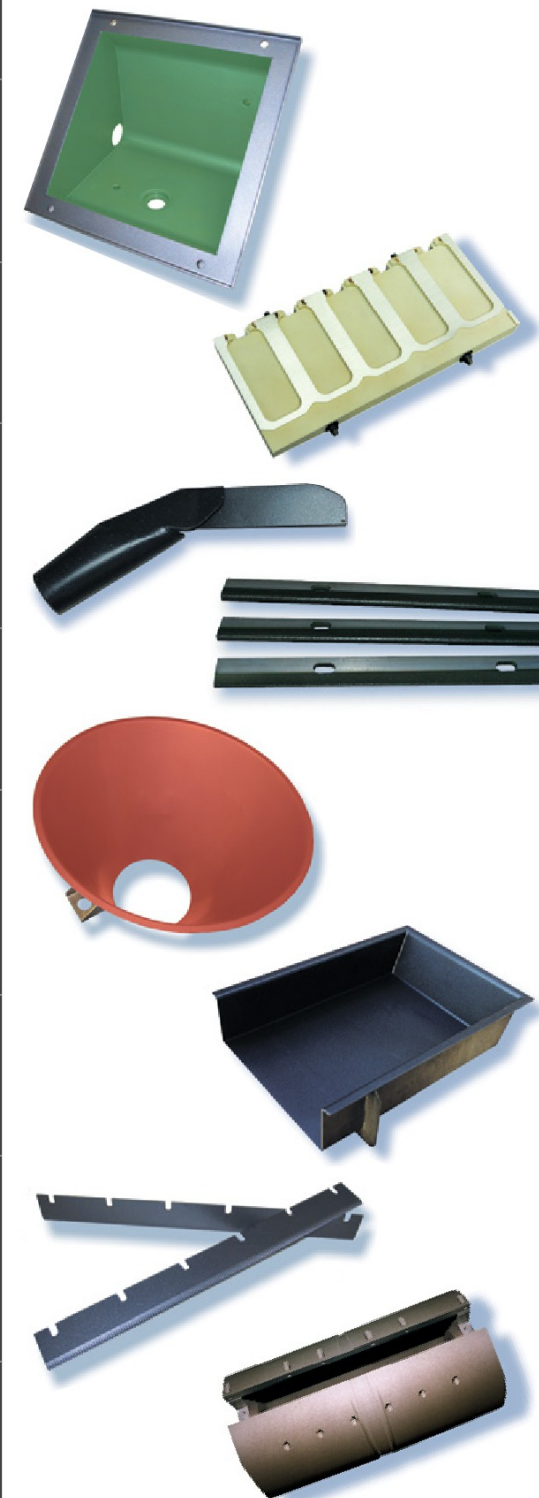
- Transports bulk materials
- For release, sliding and abrasion resistance
- FDA compliant

### Foil Cutter

- Heated cutting of film, foil, and laminates
- Combination of nonstick, heat resistance, wear resistance and easy clean properties
- FDA compliant

### Traction Cylinder

- Transport of sticky packaging films
- Traction, excellent release and exceptional wear resistance
- FDA compliant







## Graphics

For Better Printing Quality and Greater Equipment Performance



[www.impreglon.net](http://www.impreglon.net)

[www.impreglon.net](http://www.impreglon.net)



## Printing, Punching, Cutting, Gluing, Laminating ... Faster, Better and More Reliable!

Paper handling processes at high speed develop forces that can damage even steel components of the machine. Under these conditions paper friction creates dust, meaning that extensive effort is required for cleaning. These complicated factors hinder uninterrupted production and lead to downtime and maintenance.

Printing processes have their own challenges: ink tracking, ghosting, maintaining web tension without "picking", and dust buildup require surface solutions that handle various problems at the same time. With custom tailored coatings containing unique reinforcements, Impregon offers a family of solutions with superior non-stick and unrivalled wear resistance – that pay for themselves in uptime and improved processing.

### Glue Tank

- PUR adhesive reservoir for bookbinding process
- Excellent release and high durability and chemical resistance

### Idler Roll

- Transport of web
- Traction, excellent release, easy clean and high wear resistance

### Drive Roll

- Prevent web slippage
- High traction, excellent release and most durable wear resistance

### Anvil Roll

- Backup roll for die cutting station
- Extreme hardness up to 78HrC. Will not crack or chip under high pressure
- Extremely durable
- Out-performs hard-chrome and through hardened anvils

### Drive Gears

- Drive gear on printing press
- Good sliding and dry lubrication
- Eliminate oil baths and reduce oil contamination

### Applicator Roll

- Application of PUR adhesive
- Reduces build-up of PUR
- Tough and easy to clean

### Ink Pan

- Reservoir for water-based, solvent-based, and UV curable inks
- Excellent release, easy clean, enables quick color changes
- FDA compliant

### Die Cutting Roll

- For cutting sticky labels
- Excellent, high wear resistance, traction and no damage to knife edge
- FDA compliant

