

MYTH M

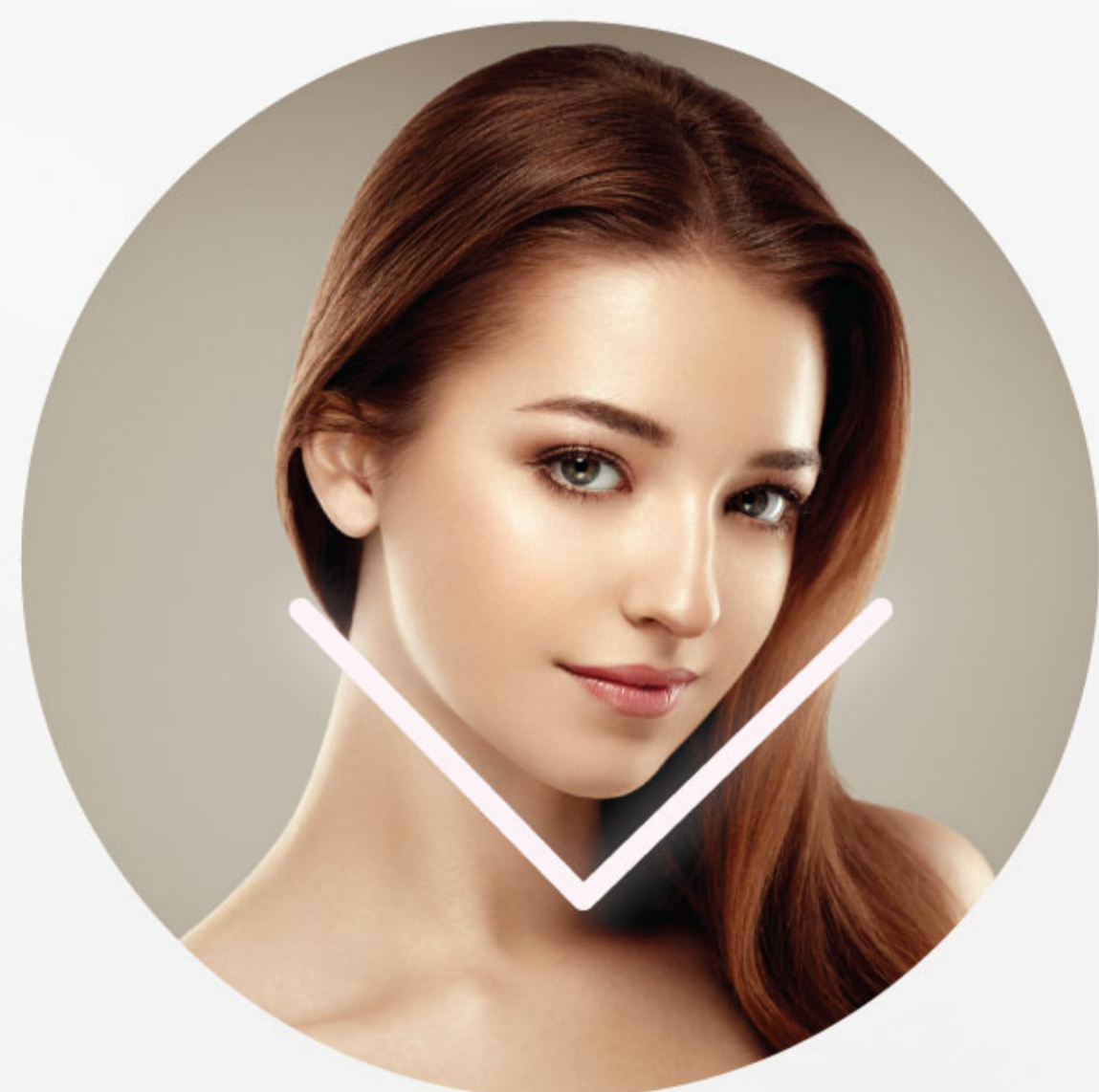
Power of **special treatment** on damaged skin cell



Beauty care device designed effectively deliver stem cell extract in the form of nano-liposome to dermal level of the skin with particle level of spray less than 0.3mm.

By spraying I've M ample extract to whole face evenly without contamination using air brush, not a hand or spatula, provide healthy and natural skin in the surface and provides regeneration effect using stem cell extract inside of the skin.

Do skin care and limp massage at the same time with **air brush**.

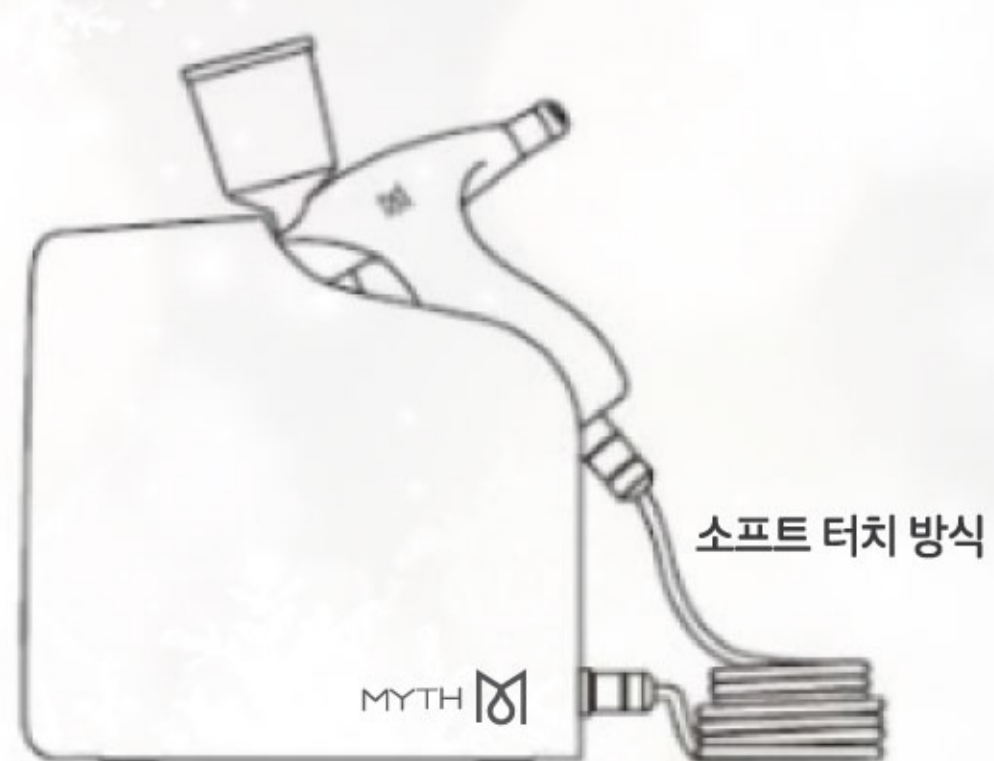


With fine spray from two strong motor, user may experience nutrient skin and limp massage.

User shall experience limp drainage massage effect that removes edema caused by limp problem by stimulating blood stream with natural and smooth air brush, not strong physical force that causes pain on the limp that acts as drainage of the body by delivering waste in our body.

100% **Domestic development, Domestic production**

2 Motor Pump 8 Valve Inside



Technology and warranty service that just cannot be compared with imported products

- Simple structure with 2 motors and 8 valves
- Less noise and less vibration
- Simple and edge design home care version
- Warranty and quality assurance with domestic produce
- Long-term cosmetic product, not just short-term product
- KC certified

MSIP-REM-Mth-MCB-220

