

GLUING AND QUALITY INSPECTION SOLUTIONS FOR THE  
**PACKAGING INDUSTRY**



**VALCO MELTON**

Adhesive Dispensing & Quality Assurance Systems

# ADVANCE INTO ALL-ELECTRIC WITH

# ecostitch

VALCO MELTON

All electric hot melt dispensing systems have been the driving force behind the reshaping of the packaging industry. Join some of the world's leading packagers already benefitting from Ecostitch™ and let the experts at Valco Melton take your production line to an unparalleled level of efficiency.

## ecostitch BENEFITS

VALCO MELTON

# 1.

More uptime. Improve the efficiency of your packaging process by increasing your production uptime.

# 2.

No plugging. Eliminate nozzle plugging by working at lower pressures with larger nozzle orifices and glue filtration in the gun body.

# 3.

Reduce adhesive consumption from 35 to 50%.

# 4.

No consumable parts. Elimination of compressed air removes moving parts, dynamic seals and frequent parts changes.

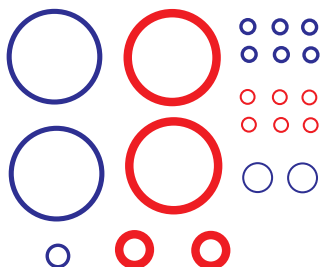
With over 2 billion cycle capability and fewer moving parts virtually eliminating the chances of failure, the spare parts stock is reduced to a minimum, resulting in lower investment, storage costs and downtime associated with the replacement of parts. In addition, the reduction in adhesive usage brings additional savings that guarantee payback in as little as 4 months.

### PARTS BREAKDOWN

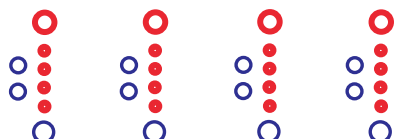
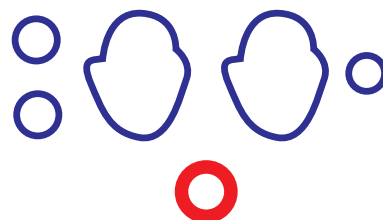
○ Static Seals    ● Dynamic Seals

#### PNEUMATIC SYSTEMS

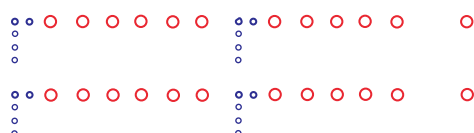
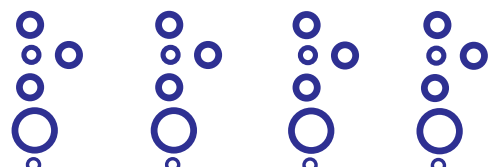
#### ELECTRIC SYSTEMS



Pump Seals



Valve Seals



Air Solenoids

No Air Solenoids

# ecostitch

VALCO MELTON

## IN ACTION

No size limitations. Achieve the smallest dot size by setting the valve into stitch mode through the valve driver.

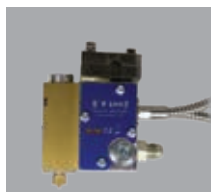
EcoStitch™ valves perform at extremely high speeds providing a clean application with no stringing and no nozzle clogging.

EcoStitch provides better bond strength and fiber tear when compared to a standard glue bead pattern. The round dots compress and burn deep into the fibers giving the bond significant fiber penetration and surface area for bonding.



### DIFFERENT CONFIGURATIONS

The EcoStitch guns are available in nearly any possible configuration required by your packaging application



MODULE  
MXM



DUAL MODULE  
MXM



V WING  
MXM



MXM2LP

## VD2 DRIVERS

The VD2 drivers integrate into any existing machine and provide the EcoStitch dot and gap control to regulate adhesive usage. Each valve can be individually programmed for a specific dot size and gap offering unparalleled flexibility to achieve maximum adhesive savings while achieving best bond quality.

VD2

VD2e

VD2p



# KUBE SYSTEM

## MELT ON DEMAND MELTERS



Designed to allow customers to use the same unit for all their packaging needs, the Kube helps improve system operation by removing degradation problems, as well as minimizes the maintenance and downtime associated with gluing systems.

**Melt on demand.** Promote adhesive stability and reduce char by only melting adhesive as you need it.

**Mount anywhere.** Engineered to operate with three different install configurations, the Kube is suitable for both new machine installations, as well as system upgrades/replacements.



**Simple conversion.** Fully compatible with other industry standard equipment, the Kube retrofits your packaging line without additional investment in hoses, guns or spare parts.

**Operator free.** Enclosed system with integrated auto feed keeps out dirt and debris, and promotes a safer work environment. Also includes manual fill option.

**Zero maintenance.** Strategically designed to automatically feed adhesive, contaminants are left out, eliminating any chance of plugged nozzles.

## INDUSTRY STANDARDS

# HOT MELT SYSTEMS

Ever since first launched by Valco Melton, the Evolution C Series has become the new and indisputable standard in hot melt dispensing equipment for the packaging industry.

**Ease of use.** Quick and easy configuration to adapt to any production line.

**Safer operation.** Engineered to minimize safety hazards related with high working temperatures and pressure.

**Universal installation.** Compact design with common footprint and market standard connections, designed for easy installation in any new or existing packaging line.

**Top performance.** EC series reset the standard in hot melt dispensing systems by implementing in its configuration top level features. Optional upgrades include a fully integrated hot melt feeding system for completely automated adhesive dispensing.

## ECOSTITCH SERIES

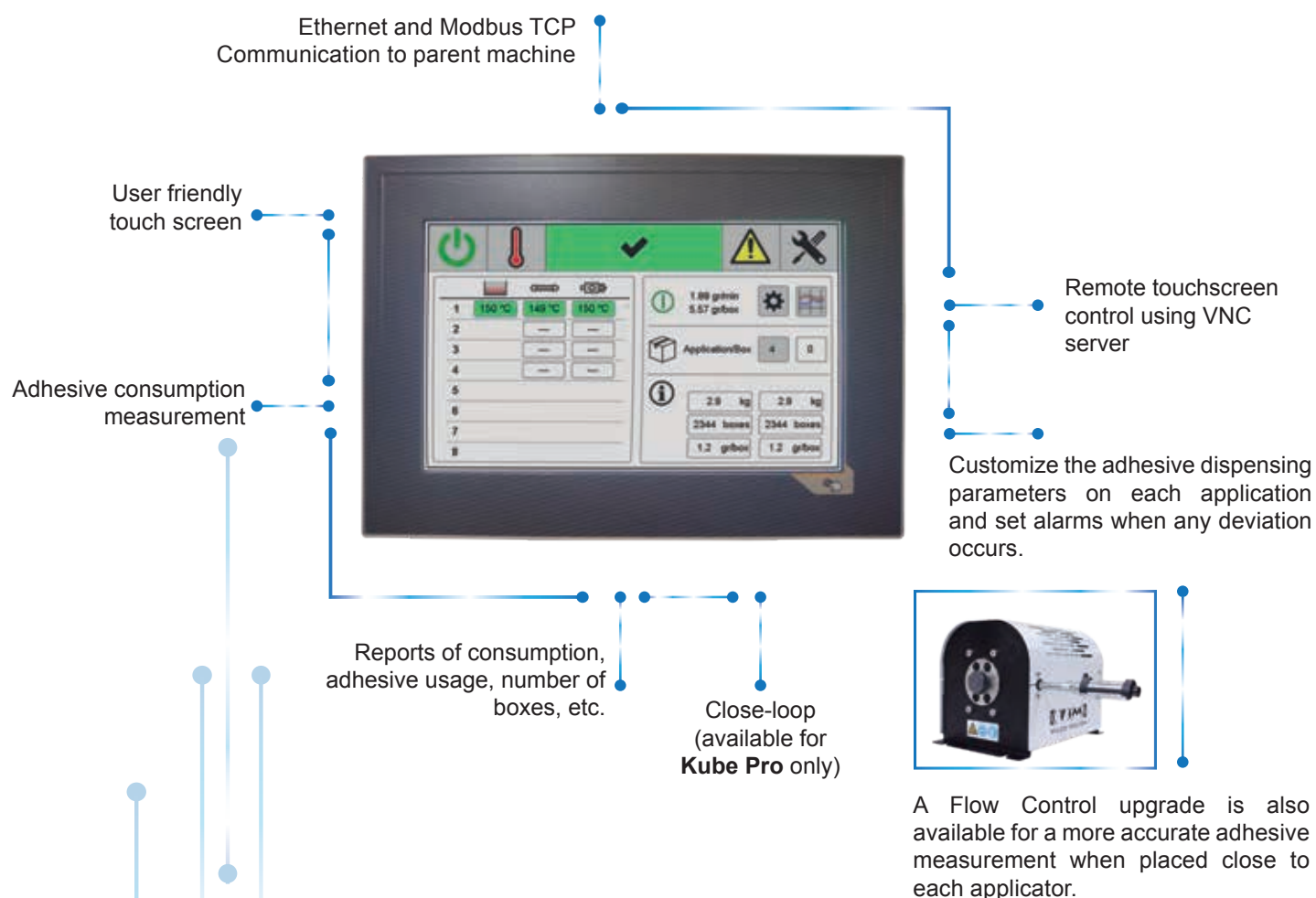


## EC SERIES

# MORE THAN A MELT UNIT

## PRO SERIES

Valco Melton has developed a unique version of our hot melt systems to help manufacturers deliver the best product. The EC Pro Series and Kube Pro are designed to integrate all digital characteristics of the heating, on/off, I/O's, pump engage, pump speeds, pump pressure and other various alarm and melter setpoints into your parent machine HMI.



# COMPLETE THE PACKAGE

Increase your production capabilities and product success with Valco Melton's comprehensive range of hot melt glue guns, designed to satisfy all application requirements in the packaging industry.

## HOT MELT APPLICATORS

### ECOSTITCH

All-Electric  
Valves



### MK-F

Insulated  
Double Effect  
Applicators



### ME

Double Effect  
(AO/AC)  
Applicators



### MS

Modular Guns  
for standard  
applications



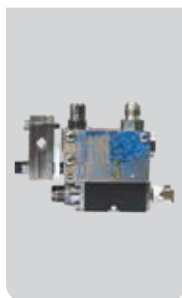
### MZ

Spray Guns with  
Air Heater



### MF

Internal  
Integrated Filter



### LP

Low Profile  
Applicators



## PATTERN CONTROLLERS

For the most advanced precision gluing experience, a complete line of pattern controls are available as both an external accessory to the packaging line or as an integrated feature of the EC Series Unit.



# HOT MELT INSPECTION

## PackChek

The PackChek System is the latest innovation in hot melt inspection for end-of-line packaging. Utilizing both thermal and visual imaging, PackChek inspects the heat signature of the package to ensure hot melt glue has been applied to the correct locations.



PackChek™ can be installed at the discharge of your machine, without space constraints.

Tolerance levels allow every pattern to be designated as 'good', 'marginal', or 'bad'. Marginal products can set off a warning, alerting operators to adjust the glue pattern or fix an issue in real time, without shutting down the machine.

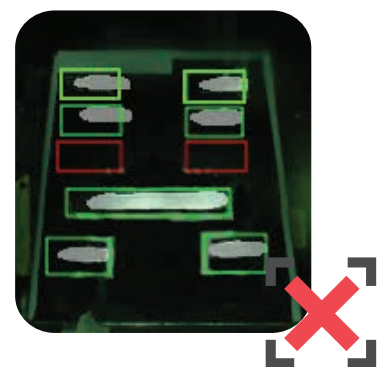
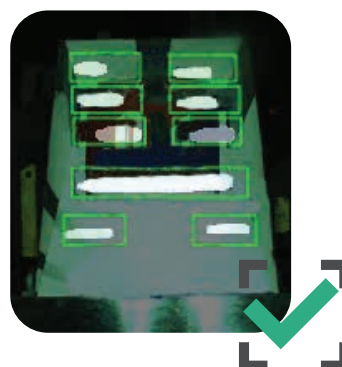


PackChek can be programmed for any number of cases and any number of glue patterns. Multi-packers that convert to various size / count packs may require the camera to be moved in or out, if mounted on the discharge conveyor.

### *How are defects defined by the system?*

Defects are defined by predetermined tolerance levels and "glue windows," which are configured by the user. Settings for tolerance levels include:

- Missing glue beads
- Weak glue beads
- Crushed, torn or open flaps
- Misaligned glue beads



## World Headquarters

**USA, OH, Cincinnati** | Tel: +1.513.874.6550  
info@valcomelton.com

### America Manufacturing, Sales & Service Centers

**Canada, Vancouver, B.C.**  
**ClearVision Technologies**  
Tel: +1.604.998.4012  
canada@valcomelton.com

**USA West Coast, CA, Petaluma**  
**GMS-Vansco**  
Tel: +1.707.285.3392  
inquiry@gmsvansco.com

**Mexico, México D.F.**  
Tel: +52.55.6278.1727  
mexico@valcomelton.com

**Colombia, Bogotá**  
Tel: +57.313.421.0926  
colombia@valcomelton.com

**Brazil, Sao Paulo**  
Tel: +55 11 3071 2117  
brazil@valcomelton.com

### Europe Manufacturing, Sales & Service Centers

**Spain, Navarra, Orcoyen** | Tel: +34 948 321 580  
spain@valcomelton.com

**France, Valence** | Tel: +33 (0) 4 75 78 13 73  
france@valcomelton.com

**Italy, Brescia** | Tel: +39 030 2732544  
italy@valcomelton.com

**Italy, Brescia I ERO s.l.r** | Tel: +39 030 2731503  
info@ero-gluers.com

**Benelux, The Netherlands** | Tel: +31 252-673673  
benelux@valcomelton.com

**Hungary, Budapest** | Tel: +36 1-214-4705  
hungary@valcomelton.com

**UK, England, Telford** | Tel: +44 1952-677911  
uk@valcomelton.com

**Germany, Düsseldorf** | Tel: +49 211 984 798-0  
germany@valcomelton.com

**Poland, Długołęka** | Tel: +48 71 889 04 50  
poland@valcomelton.com



Direct Sales Centers ●  
Distributors Worldwide ●

### South, Southeast, West & Central Asia Manufacturing, Sales & Service Centers

**Turkey, Istanbul** | Tel: +90 212 327 99 71  
turkey@valcomelton.com

**India, Bangalore** | Tel: +91.80.46553300  
india@valcomelton.com

**UAE, Sharjah** | Tel: +971.521305960  
uae@valcomelton.com

**Singapore, Singapore** | Tel: +65 850 95355  
singapore@valcomelton.com

### East Asia Sales & Service Centers

**China, Shanghai** | china@valcomelton.com

**China, Xiamen** | Tel: +86.592.591.7854

Fax: +86.592.591.7834 | china@valcomelton.com

To find the office nearest you, visit:  
<http://bit.ly/2Cb8Fv2>  
or snap a picture of this QR Code



BC-004