



# COMPANY PRESENTATION

*TAILOR MADE SOLUTION FOR OIL&GAS APPLICATIONS*



# GROUP HISTORY



- 1963- starting production activity
- 2009- first building fully dedicated to stem machining
- 2010- certification ISO and API Q1
- 2012- new building for CNC machining
- 2014- new building for service department
- 2016- start VALMAR company
- 2016- new integrated system according to UNI EN ISO 9001; OHSAS 8001; UNI EN ISO 14001

INOX MECC is an Italian benchmark for the manufacturing of valve components in the Oil & Gas industry and a complete range of instrumentation valves for different application as well. Thanks to its background is able to provide a tailor made solutions for all the Oil&Gas application

# *INTRODUCTION AND COMPANY POLICY*

INOX MECC is an Italian benchmark for the manufacturing of valve components in the Oil & Gas industry and a complete range of instrumentation valves for different application as well. Thanks to its background is able to provide a tailor made solutions for all the Oil&Gas application



InoxMecc policy is the following: being able to offer the higher standards, from the single item to full batches, from small to big dimensions, through an internal manufacturing production and qualified sub-suppliers with the most upgrade level of equipment and knowledge and relying on highly qualified, flexible and skilled staff. Modern equipment, consolidated skills and 'just in time' process management ensure both prompt responses and the highest technical and quality performance as well as competitive prices for the petrochemical market



# INOX MECC MANUFACTURING PRODUCTION RANGE



Inoxmecc is able to manufacture

- Valve components
  - Stem, bodies, closures, gland flanges, bonnets. Discs, seats, flanges
- Instrumentation monoblock valves
  - Sampling valves
  - Injection valves
  - Instrumentation DBB
- Monoflanges
  - T-bar
  - antitamper
  - O.S.&Y.
- Manifolds
  - From series 1 to series 5
- Needle valves
- Bleeders
- Cavity plugs
- Relief valves
- Injection grease fittings and check valves



# MATERIAL AVAILABILITY



Inoxmecc has a dedicated area of 6000 sqm to stock raw materials.

The entire range of alloys like AISI 410, 316 and 304 steels, duplex, superduplex, titanium, nickel alloys (Inconel 625, Inconel718) and hastelloy are ready in our warehouse to be able to delivery the components as a fast track items.

Each material is 100% controlled by the PMI testing and duly certified and we have a complete traceability during our production line according to ISO and API certification.

In addition to the above we can provide you the complete item with special coatings and surface treatments

From a quality point of view we can carry on standard NDT or supplementary laboratory tests such as MICRO, Impact Test, Corrosion Test and more.

ORSHOP AN





# INOXMECC PRODUCTION EQUIPMENT

## MANUAL MACHINING

- 8 parallel lathes

## CNC MACHINING

- 22 Lathes
- 7 engined Y-axes lathes
- 11 engined lathes
- 2 teach-in lathes
- 7 sliding headstock lathes
- 4 engined sliding headstock lathes

maximum turning diameter with loader: 105 mm

maximum length with loader: 1700 mm

maximum turning diameter: 900 mm

maximum length: 8000 mm

## CNC MACHINING CENTER

- 2 cnc machining centers
- 1 four axes cnc machining center
- 2 five axes cnc machining centers
- 10 manual drilling machines
- 3 universal manual drilling machines
- 2 shearing machines maximum drilling machining: 4000 X 1200 X 800

## THREADING

- 15 threading machines

## LAPPING

- 3 roller lapping machines maximum diameter: 98 mm
- 3 lapping machines maximum diameter: 430 mm

## CUTTING CENTER

- 4 CNC sawing machines maximum diameter: 430 mm

## BROACHING DEPARTMENT

### SEAL PRESSES

- 5 Automators
- Automatic vertical storage - MODULA
- Automatic insert storage - MATRIX

### LIFTING EQUIPMENT

- 3 OverHead cranes (6.3 tons)
- 3 OverHead travelling cranes (max. 2 tons)
- 6 fork trucks (max. 25 tons)

## TESTING WORK BENCHES (max 10.000 PSI)

# QUALITY DEPARTMENT

## **DIMENSIONAL INSPECTION**

- *Durometers, feeler gauges, surface roughness gauges*
- *TESA digital altimeters*
- *Micrometer gauges, calibers, interior and exterior digital marketing gauges*
- *Projectors*
- *Mechanical and magnetic comparison equipment*
- *Three-dimensional coordinate measuring machine (maximum measures 2500X1500X100 mm)*

## **NON-DESTRUCTIVE TESTING**

- *PT: Dye penetrant examination & black light*
- *MT: Magnetic Particles examination*
- *UT: Ultrasonic examination*

## **TEST EQUIPMENT**

- *Hydraulic and pneumatic horizontal testing maximum pressure 630 bar*

## **CHEMICAL ANALYSIS**

- *Niton Thermoscientific XRF*

## **OUTSOURCING TESTS:**

*We also use outsourcing, getting support from outside laboratories for tests that are not carried out at INOX MECC such as:*

- *UT: Ultrasonic examination*
- *RT: Radiographic Examination Capability of shooting on site, x-ray films development and reading in house (ASME reference plates)*
- *Charpy-V impact test*
- *Micrography*

## **QUALIFIED PERSONNEL**

*INOX MECC personnel is qualified to carry out all the above mentioned controls. In particular, for Non-Destructive Tests, INOX-MECC staff includes fully trained, qualified and certified personnel in accordance with STN-TC-1A and EN 473 requirements*



# CERTIFICATION

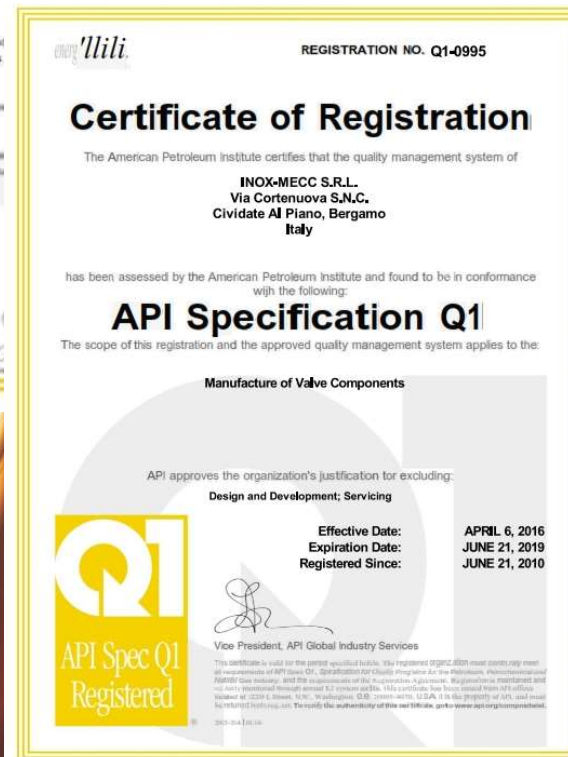
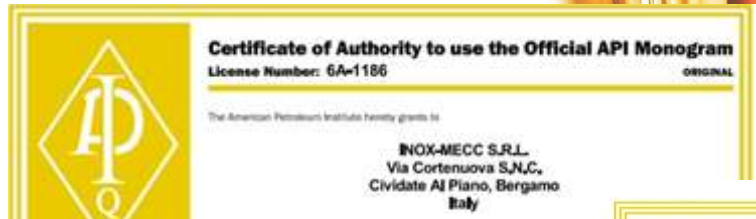


Inoxmecc has the following certification

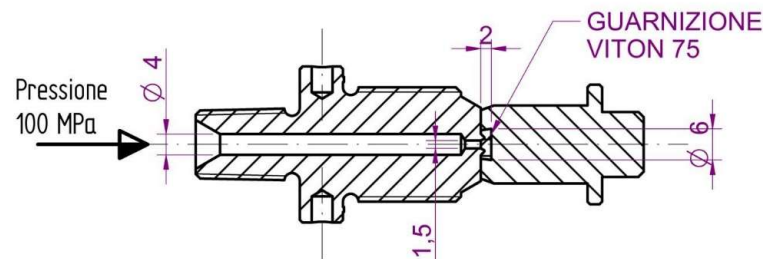
- ISO 9001
- API Q1
- API 6A

The following certification is under process

- PED
- EU Export Compliance License
- Quality, Environmental and Safety Integrated System according to UNI EN ISO 9001; OHSAS 8001; UNI EN ISO 14001

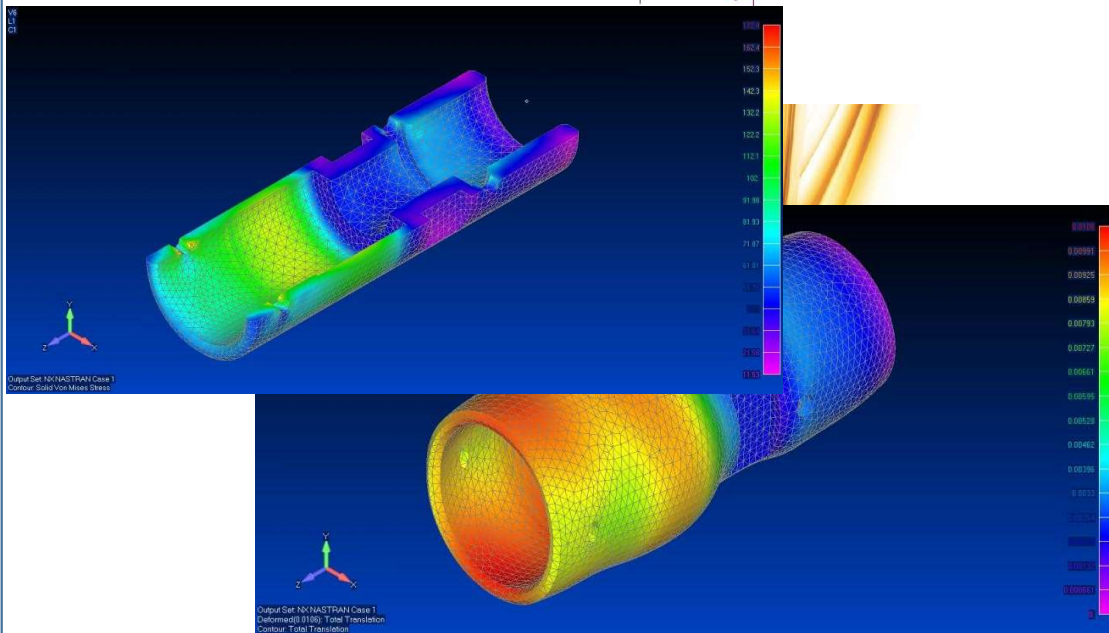


# R&D AND TECHNICAL OFFICE DEPARTMENT



Our R&D and technical department can support you and provide the best solution required, designing a fully tailor made products according to the project specification both in terms of design and material requirements.

Each single components are designed using a 3d software and verified according to the ASME code and other applicable standard or we can use a FEM analysis to provide you the real 3D overall stress and strain for very critical components



Abstract, flowing, orange and yellow lines that resemble liquid or energy, curving upwards from the bottom left towards the center of the slide.

# *DESIGN AND ENGINEERING FEATURES*



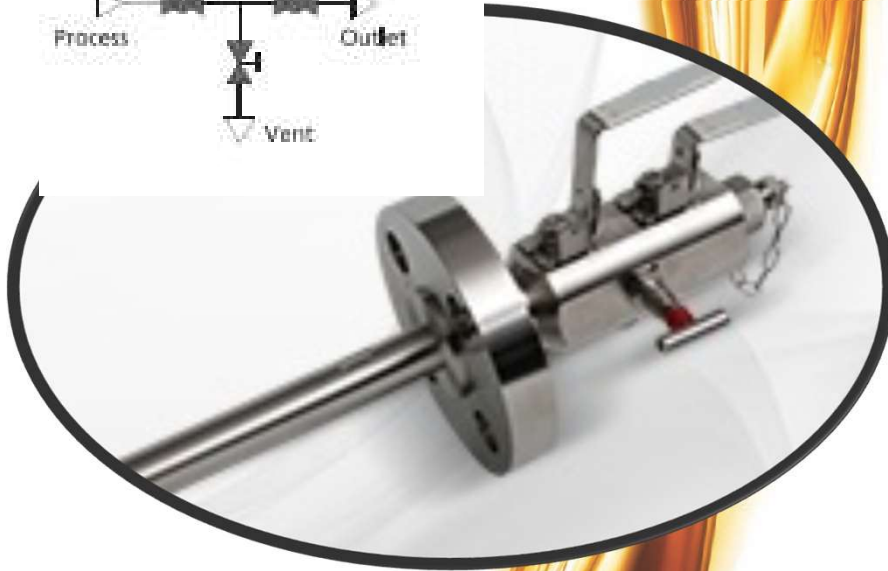
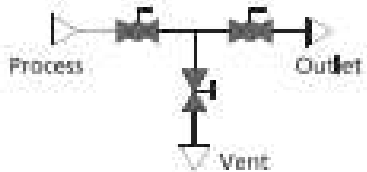
# VALVE COMPONENTS



- Stem from ½ to 70 inch and up to 8000 length
- Body, closures, bonnets, gland flange
- Discs. Gates, seat for through conduit
- Bearing, bearing retainer, stem extension



# INSTRUMENTATION MONOBLOCK VALVES



## SAMPLING VALVES

### Features:

- with sampling probe
- instrumentation side with plug
- packing peek or Graphite
- flange acc. to ASME B16.5
- testing according to API 598 nad E
- firesafe acc. to ISO 10497/API 607, API 6FA
- bore size 12.7mm

### Available materials:

- Carbon steel A105 or LF2
- Stainless Steel grade 316(L)
- Duplex F51 and superduplex F53,F55
- 6Mo material (F44)
- Monel 400
- Hastelloy C276
- Inconel 625 and Incoloy 825
- Nace material available on request

# INSTRUMENTATION MONOBLOCK VALVES

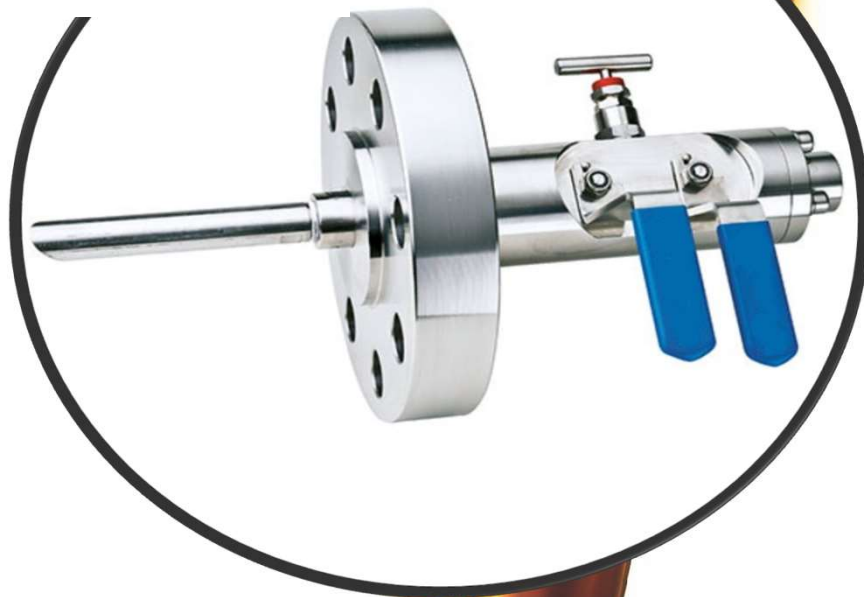
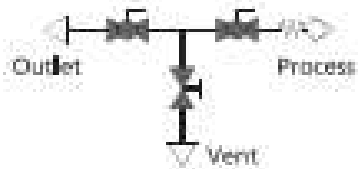
## INJECTION VALVES

### Features:

- With injection quill
- Process side with check
- packing peek or Graphite
- flange acc. to ASME B16.5
- testing according to API 598 nad E
- firesafe acc. to ISO 10497/API 607, API 6FA
- bore size 12.7mm

### Available materials:

- Carbon steel A105 or LF2
- Stainless Steel grade 316(L)
- Duplex F51 and superduplex F53,F55
- 6Mo material (F44)
- Monel 400
- Hastelloy C276
- Inconel 625 and Incoloy 825
- Nace material available on request





# INSTRUMENTATION MONOBLOCK VALVES

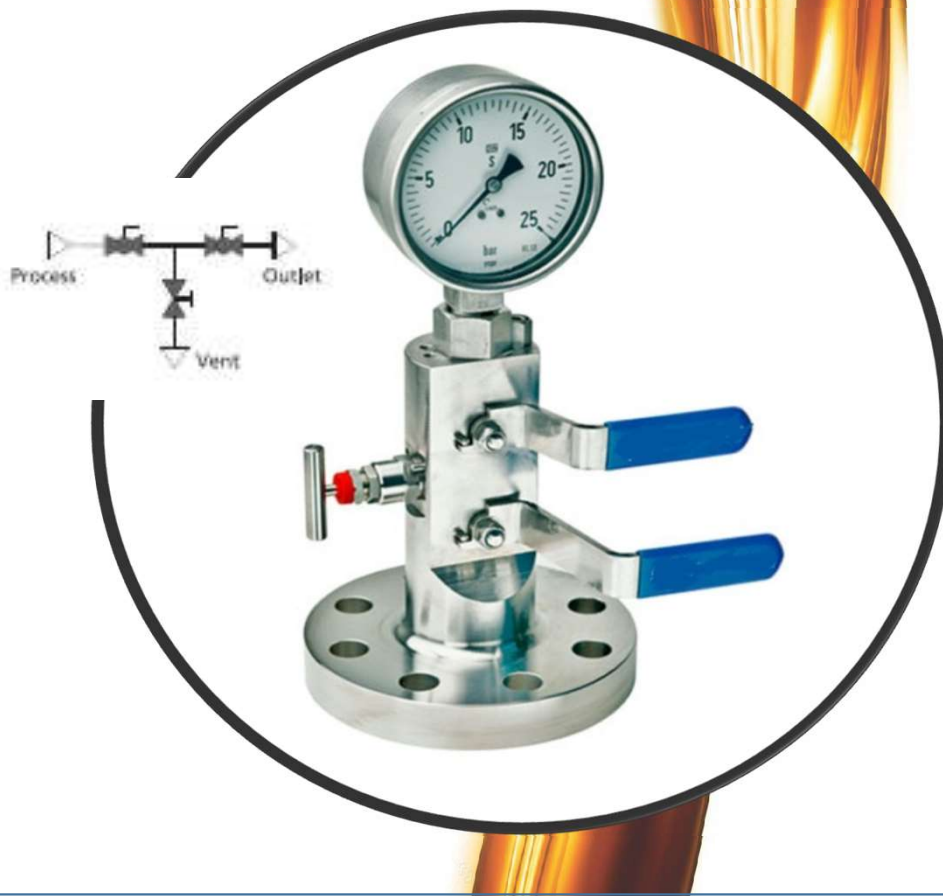
## INSTRUMENTATION DBB VALVES

### Features:

- Instrumentation side suitable for gauges
- packing peek or Graphite
- flange acc. to ASME B16.5
- testing according to API 598 nad E
- firesafe acc. to ISO 10497/API 607, API 6FA
- bore size 12.7mm

### Available materials:

- Carbon steel A105 or LF2
- Stainless Steel grade 316(L)
- Duplex F51 and superduplex F53,F55
- 6Mo material (F44)
- Monel 400
- Hastelloy C276
- Inconel 625 and Incoloy 825
- Nace material available on request



# MONOFLANGE VALVES



## TEE-BAR

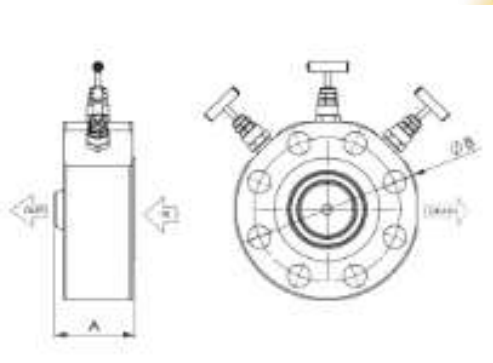
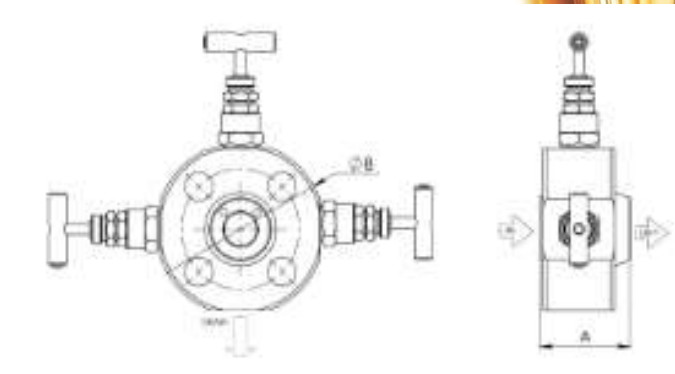


### Features:

- Single Block and Double block
- Single Block and Bleed and Double Block and Bleed
- Flange acc. to ASME B16.5- Threaded acc. to ASME B1.20.1
- Packing in PTFE or Graphite
- inlet flanged/outlet NPT
- drain 1/4" NPT –option for 1/2" NPT
- design and testing according to API 598 and EEMUA 182

### Available materials:

- Carbon steel A105 or LF2
- Stainless Steel grade 316(L)
- Duplex F51 and superduplex F53,F55
- 6Mo material (F44)
- Monel 400
- Hastelloy C276
- Inconel 625 and Incoloy 825
- Nace material available on request



# MONOFLANGE VALVES



## ANTI TAMPER

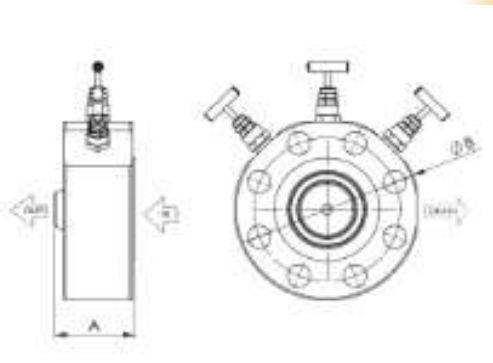
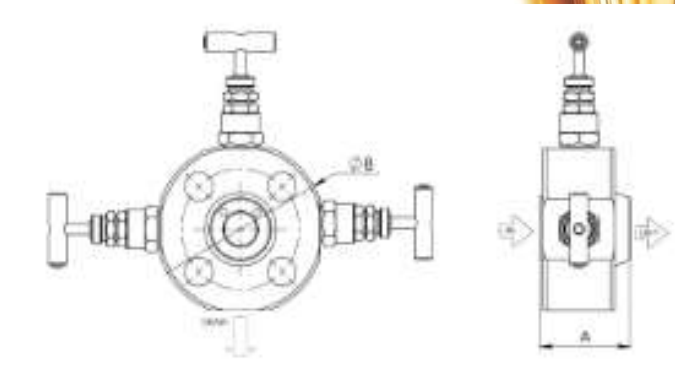


### Features:

- Single Block and Double block
- Single Block and Bleed and Double Block and Bleed
- Flange acc. to ASME B16.5- Threaded acc. to ASME B1.20.1
- Packing in PTFE or Graphite
- inlet flanged/outlet NPT
- drain 1/4" NPT –option for 1/2" NPT
- design and testing according to API 598 and EEMUA 182

### Available materials:

- Carbon steel A105 or LF2
- Stainless Steel grade 316(L)
- Duplex F51 and superduplex F53,F55
- 6Mo material (F44)
- Monel 400
- Hastelloy C276
- Inconel 625 and Incoloy 825
- Nace material available on request





# MONOFLANGE VALVES



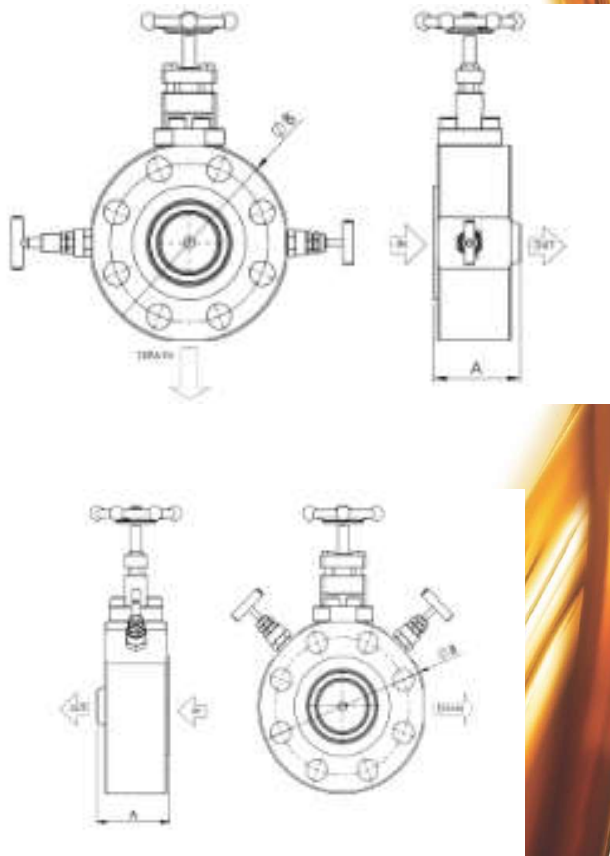
## O.S.&Y

### Features:

- Single Block and Double block
- Single Block and Bleed and Double Block and Bleed
- Flange acc. to ASME B16.5- Threaded acc. to ASME B1.20.1
- Packing in PTFE or Graphite
- inlet flanged/outlet NPT
- drain 1/4" NPT –option for 1/2" NPT
- design and testing according to API 598 and EEMUA 182

### Available materials:

- Carbon steel A105 or LF2
- Stainless Steel grade 316(L)
- Duplex F51 and superduplex F53,F55
- 6Mo material (F44)
- Monel 400
- Hastelloy C276
- Inconel 625 and Incoloy 825
- Nace material available on request



# MANIFOLDS



## SERIES FROM 1 to 5

### Features:

- NPT/NPT
- NPT/FLANGED
- FLANGED/FLANGED
- with standard tee bar- with antitamper T-bar
- packing ptfe/graphoil
- RATING #6000 OPTION #10000

### Available materials:

- Carbon steel A105 or LF2
- Stainless Steel grade 316(L)
- Duplex F51 and superduplex F53,F55
- 6Mo material (F44)
- Monel 400
- Hastelloy C276
- Inconel 625 and Incoloy 825
- Nace material available on request



# NEEDLE VALVES



## Features:

- In female / Out female
- In male / Out female
- Non rotating lower stem
- Standard with tee bar-optional with antitamper
- Class rating and temperature are based on ASME codes
- Packing ptfe/graphoil
- rating #6000 and #10000

## Available materials:

- Stainless Steel grade 316(L)
- Duplex F51 and superduplex F53,F55
- 6Mo material (F44)
- Monel 400
- Hastelloy C276
- Inconel 625 and Incoloy 825
- Nace material available on request



# BLEEDERS

**BLEEDERS**

**INOX - MECC**

**Productions:**

- With or without o-ring
- with or without hex socket
- according to customer drawing

**Available materials:**

- Carbon Steel A105 or LF2
- Stainless Steel grade 316(L), 304(L)
- Duplex F51 and superduplex F53, F55
- Other special alloys

Working pressure 645 barg (#2500)

**Technical Drawing:**

**Table 1: Dimensions for Bleeder Valves (mm)**

CODE	Size	L	A	B	C	E	F	G	H	M	N	O	P	Hex1	Hex2
IM BL0140R	1/4" NPT	81	11.5	12	36	3.5	2.5	30	8	22	17.8	10	7.6	24	24
IM BL0380R	3/8" NPT	81	12	12	36	3.5	2.5	30	8	22	17.8	13	11.4	24	24
IM BL0120R	1/2" NPT	82	13	14	37	3.5	2.5	30	8	22	17.8	17	15	24	24
IM BL0340R	3/4" NPT	86	13	16	41	3.5	2.5	30	8	27	22.8	21	17	30	24
IM BL0080R	1" NPT	92	14	19	47	3.5	2.5	30	8	29	25.5	22.8	25	36	24

**Table 2: Dimensions for Bleeder Valves (mm) - Hex Socket**

CODE	Size	L	A	B	C	Hex
IM BL014HS	1/4" NPT	48	18	3.5	2.5	24
IM BL038HS	3/8" NPT	48	18	3.5	2.5	24
IM BL012HS	1/2" NPT	50	20	3.5	2.5	24
IM BL034HS	3/4" NPT	50	20	3.5	2.5	30
IM BL008HS	1" NPT	52	22	3.5	2.5	36

**Table 3: Dimensions for Bleeder Valves (mm) - Hex Socket**

CODE	Size	L	A	B	C	E	F	G	I	M	N	Hex
IM BL014HSOR	1/4" NPT	66	11.5	12	36	3.5	2.5	22	17.8	10	7.6	24
IM BL038HSOR	3/8" NPT	66	12	12	36	3.5	2.5	22	17.8	13	11.4	24
IM BL012HSOR	1/2" NPT	67	13	14	37	3.5	2.5	22	17.8	17	15	24
IM BL034HSOR	3/4" NPT	71	13	16	41	3.5	2.5	27	22.8	21	17	24
IM BL008HSOR	1" NPT	77	14	19	47	3.5	2.5	29	25.5	29	25.5	24

**INOX MECC s.r.l.**  
Via Cotenueve s.n.c. - 24050 Cividale al Piano - BERGAMO - Italy  
tel. +39 0363 97003 - fax +39 0363 945383  
C.F. - P.IVA 01630750162  
info@inoxmecc.com - www.inoxmecc.com

**VALVE COMPONENTS & PETROCHEMICAL SOLUTIONS**



## Features:

- With or without o-ring-
- with or without hex socket-
- according to customer drawing

## Available materials:

- Carbon Steel A105 or LF2
- Stainless Steel grade 316(L), 304(L)
- Duplex F51 and superduplex F53, F55
- Other special alloys





# BLEEDERS WITH TEE-BAR



**BLEEDER T-BAR**

**Productions:**

- antitamper version
- UNF, metric or NPT Thread
- according to customer drawing

**Available materials:**

- Carbon Steel A105 or LF2
- Stainless Steel grade 316(L), 304(L)
- Duplex F51 and superduplex F53, F55
- Other special alloys

Working pressure 645 barg (#2500)

**Technical Drawing:**

**Dimensions Table:**

CODE	Size	LT	L	A	B	V	Hex1	Hex2	Hex3
IM K064BT07SF	3/4" 16-UNF	102	975	62.5	10	48	22	17	17

**Components List:**

Part.	CODE	Description	Q.ty
1	IM K064B075F001	Body	1
2	IM K064B075F002	Packing	1
3	IM K064B075F003	Nut	1
4	IM K064B075F004	Gland Pusher	1
5	IM K064B064MST	Stem	1
6	IM K064B075F005	Rotating tip	1
7	IM K064B075F006	Connector	1
8	IM K064B075F007	Handle	1
9	GRANOMEX10UNH592	Locking Screw	1
10	IM K064B075F008	Gasket	1

**Dimensions Table (Metric):**

CODE	Size	LT	A	B	C	D	V	Hex1	Hex2
IM BB-M22	M22	109	14	95	11.3	20	80	27	27
IM BB-M28	M28	109	14	95	11.3	20	80	32	32
IM BB-M30	M30	113	19.5	93.5	11.3	36	80	32	32
IM BB-M32	M32	115	20.5	94.5	11.3	36	80	36	32

**Components List (Metric):**

Part.	CODE	Description	Q.ty
1	IM BB000A	Body	1
2	IM BB-MST001	Stem	1
3	IM BB-MBT008	Rotating tip	1
4	IM BB-MBT01	Ring	1
5	IM BB-MGPH75	Graphite packing	1
6	IM BB-MGLP19	Gland Pusher	1
7	IM BB-MC0002	Cover	1
8	IM VOL	Handle	1
9	IM RNDM82	Washer	1
10	IM NUTM8	Nut	1

**INOX MECC s.r.l.**  
Via Cortenuova s.n.c. - 24050 Cividate al Piano - BERGAMO - Italy  
tel. +39 0363 97003 - fax +39 0363 945383  
C.F. - P.IVA 01630750162  
info@inoxmecc.com - www.inoxmecc.com

**VALVE COMPONENTS & PETROCHEMICAL SOLUTIONS**

## Features:

- antitamper version
- UNF, metric or NPT Thread
- according to customer drawing

## Available materials:

- Carbon Steel A105 or LF2
- Stainless Steel grade 316(L), 304(L)
- Duplex F51 and superduplex F53, F55
- Other special alloys



# CAVITY PLUGS

**CAVITY PLUGS**

**INOX - MECC**

**Available materials:**

- Carbon Steel A105 or LF2
- Stainless Steel grade 316(L), 304(L)
- Duplex F51 and superduplex F53, F55
- Other special alloys

Working pressure 645 barg (#2500)

**Technical drawings:**

**Table 1: Dimensions for NPT and GAS threads**

CODE	Size	L	A	B	D	Hex
IM P018	1/8" NPT	16	6	10	12.7	11
IM P014	1/4" NPT	17	6	11	18.5	16
IM P038	3/8" NPT	21	8	13	20.8	18
IM P012	1/2" NPT	22	8	14	25.3	22
IM P034	3/4" NPT	26	10	16	31	27
IM P100	1" NPT	29	10	19	41.5	36
IM P114	1 1/4" NPT	35	14	21	53	46
IM P112	1 1/2" NPT	37	16	21	57.6	50
IM P200	2" NPT	40	18	22	75	65

**Table 2: Dimensions for GAS threads**

CODE	Size	L	A	B	D	Hex
IM PG018	1/8" GAS	16	6	10	12.7	11
IM PG014	1/4" GAS	17	6	11	18.5	16
IM PG038	3/8" GAS	21	8	13	20.8	18
IM PG012	1/2" GAS	22	8	14	25.3	22
IM PG034	3/4" GAS	26	10	16	31	27
IM PG100	1" GAS	29	10	19	41.5	36
IM PG114	1 1/4" GAS	35	14	21	53	46
IM PG112	1 1/2" GAS	37	16	21	57.6	50
IM PG200	2" GAS	40	18	22	75	65

**Table 3: Dimensions for OR and NPT threads**

CODE	Size	L	A	B	C	E	F	G	H	Hex
IM P014OR	1/4" NPT	51	16	11.5	15.5	9	7.6	22	17.8	24
IM P038OR	3/8" NPT	52	16	11.5	16.5	13	11.4	22	17.8	24
IM P012OR	1/2" NPT	53	16	13	17.5	17	13	22	17.8	24
IM P034OR	3/4" NPT	8	15	15	19.5	21	17	27	22.8	30
IM P100OR	1" NPT	65	13	18	19	27	22.8	34	29.8	36

**INOX MECC s.r.l.**  
Via Cortenuova s.n.c. - 24050 Cividate al Piano - BERGAMO - Italy  
tel. +39 0363 97003 - fax +39 0363 945383  
C.F. - P.IVA 01630750162  
info@inoxmecc.com - www.inoxmecc.com

**VALVE COMPONENTS & PETROCHEMICAL SOLUTIONS**

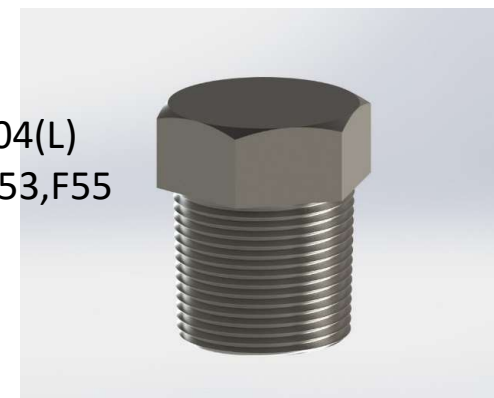


## Features:

- NPT thread
- GAS thread
- NPT with o-ring
- according to customer drawing

## Available materials:

- Carbon Steel A105 or LF2
- Stainless Steel grade 316(L), 304(L)
- Duplex F51 and superduplex F53, F55
- Other special alloys



# RELIEF VALVES



**RELIEF VALVES**

**Productions:**

- with soft or metal seat
- NPT thread
- according to customer drawing
- setting pressure according to customer request
- max allowable setting pressure 645 barg (#2500)

**Available materials:**

- Carbon Steel A105 or LF2
- Stainless Steel grade 316(L), 304(L)
- Duplex F51 and superduplex F53, F55
- Other special alloys

**Technical drawings and tables:**

**Table 1: Dimensions for IM RL014, IM RL038, IM RL012, IM RL034, IM RL100**

CODE	Size	L	A	Hex
IM RL014	1/4" NPT	85	15	24
IM RL038	3/8" NPT	85	15	24
IM RL012	1/2" NPT	85	19	24
IM RL034	3/4" NPT	90	20	30
IM RL100	1" NPT	90	22	35

**Table 2: Dimensions for IM RL014HP, IM RL038HP, IM RL012HP, IM RL034HP, IM RL100HP**

CODE	Size	L	A
IM RL014HP	1/4" NPT	100	14
IM RL038HP	3/8" NPT	100	14
IM RL012HP	1/2" NPT	104	19
IM RL034HP	3/4" NPT	108	22
IM RL100HP	1" NPT	113	27

**Table 3: Dimensions for IM 00-10-001-00-C1-50-014, IM 00-10-001-00-C1-50-038, IM 00-10-001-00-C1-50-012, IM 00-10-001-00-C1-50-034, IM 00-10-001-00-C1-50-100**

CODE	Size	L	A	B	C
IM 00-10-001-00-C1-50-014	1/4" NPT	123	116	20	32
IM 00-10-001-00-C1-50-038	3/8" NPT	123	116	20	32
IM 00-10-001-00-C1-50-012	1/2" NPT	123	116	24	32
IM 00-10-001-00-C1-50-034	3/4" NPT	123	116	27	35
IM 00-10-001-00-C1-50-100	1" NPT	123	116	27	40

**INOX MECC s.r.l.**  
Via Cortenuova s.n.c. - 24050 Cividate al Piano - BERGAMO - Italy  
tel. +39 0363 97003 - fax +39 0363 945383  
C.F. - P.IVA 01630760162  
info@inoxmecc.com - www.inoxmecc.com

**VALVE COMPONENTS & PETROCHEMICAL SOLUTIONS**

## Features:

- with soft or metal seat
- NPT thread
- according to customer drawing
- setting pressure according to customer request
- max allowable setting pressure 645 barg (#2500)

## Available materials:

- Carbon Steel A105 or LF2
- Stainless Steel grade 316(L), 304(L)
- Duplex F51 and superduplex F53, F55
- Other special alloys



# INJECTION GREASE FITTINGS



**GREASE FITTINGS VENT CUP**

**Productions:**

- with or without vent cup
- with or without o-ring
- short or long pattern
- according to costumer drawing
- ball in monel, inconel 625
- with or without tcc
- spring in INC 718,625 and 750

**Available materials:**

- Carbon Steel A105 or LF2
- Stainless Steel grade 316(L), 304(L)
- Duplex F51 and superduplex F53,F55
- Other special alloys

Working pressure 645 barg(#2500)

HEX 2

CODE	Size	Type	L	A	B	C	CHI	Hex
IM GF0145VCSR	1/4" NPT	B	46	15	10	16	27	30
IM GF0385VCSR	3/8" NPT	B	49	18	10	16	27	30
IM GF0125VCSR	1/2" NPT	B	52	21	10	16	27	30
IM GF0345VCSR	3/4" NPT	B	53	22	10	16	30	30
IM GF0005VCSR	1" NPT	B	58	27	13	16	36	30

Components List

Part	CODE	Description	Qty
1	IM GF0005VCSR	Body	1
2	IM GFVC30	Vent Cup	1
2	IM B0140	Ball D. 1/4"	1
3	IMBS5.5	Ball Support	1
4	IM-SP-22x9.3x1.3	Spring	1

HEX 2

CODE	Size	Type	L	A	B	C	D	E	F	G	H	Hex1	Hex2
IM GF0145VCOR	1/4" NPT	A	63	11.5	12	12.5	22	10	7.6	22	17.8	27	30
IM GF0385VCOR	3/8" NPT	B	64	12	14.5	16.5	26	16	13	22	17.8	27	30
IM GF0125VCOR	1/2" NPT	B	68	13	17.5	16.5	16	17	13	22	17.8	27	30
IM GF0345VCOR	3/4" NPT	B	72	13	19.5	18.5	16	21	17	27	22.8	30	30
IM GF0005VCOR	1" NPT	B	80	14	23	22	16	30	25.3	34.8	30.2	36	30

Components List

CODE	Description	Qty	
1	IM GF0005VCOR	Body	1
2	IM GFVC30	Vent Cup	1
3	IM B0732	Ball D. 7/32"	1
4	IM-SP-28x10.9	Spring	1

**INOX MECC s.r.l.**  
Via Cortenuova s.n.c. - 24050 Cividate al Piano - BERGAMO - Italy  
tel. +39 0363 97003 - fax +39 0363 945383  
C.F. - P.IVA 01630750162  
info@inoxmecc.com - www.inoxmecc.com

**VALVE COMPONENTS & PETROCHEMICAL SOLUTIONS**

## Features:

- with or without vent cup
- with or without o-ring
- short or long pattern
- according to costumer drawing
- ball in monel, inconel 625
- with or without tcc
- Spring in INC 718,625 and 750
- Working pressure 645 barg (#2500)

## Available materials:

- Carbon Steel A105 or LF2
- Stainless Steel grade 316(L), 304(L)
- Duplex F51 and superduplex F53,F55
- Other special alloys





# CHECK VALVES

## CHECK VALVES



### Productions:

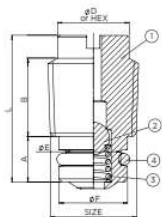
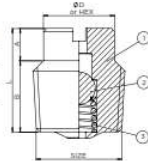
- with or without o-ring
- metal or soft
- available with hex socket
- according to customer drawing
- ball in monel, inconel 625
- with or without TCC
- spring in INc 718, 625 and 750

### Available materials:

- Carbon Steel A105 or LF2
- Stainless Steel grade 316(L), 304(L)
- Duplex F51 and superduplex F53,F55
- Other special alloys

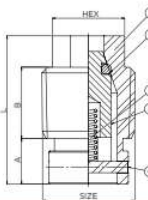
Working pressure 645 barg(#2500)

CODE	Size	L	A	B	D	Hex
IM CH018S	1/8" NPT	16	3,5	9,5	8,3	7
IM CH014S	1/4" NPT	16	5	11	11	8
IM CH038S	3/8" NPT	17	5	11,5	14	11
IM CH012S	1/2" NPT	20	5	15	16	13



CODE	Size	L	A	B	D	E	F	Hex
IM CH040RS	1/4" NPT	22,5	7	12	11	6,4	10,5	8
IM CH038RS	3/8" NPT	22,5	7	12	14	12,4	14,5	11

CODE	Size	L	A	B	Hex
IM CH038SS	3/8" NPT	26	8	12,5	11



### INOX MECC s.r.l.

Via Cortenuova s.n.c. - 24050 Cividate al Piano - BERGAMO - Italy  
tel. +39 0363 97003 - fax +39 0363 945383  
C.F. - P.IVA 01630750162  
info@inoxmecc.com - www.inoxmecc.com



VALVE COMPONENTS & PETROCHEMICAL SOLUTIONS



## Features:

- with or without o-ring
- metal or soft-
- available with hex socket
- according to customer drawing
- ball in monel, inconel 625
- with or without TCC
- spring in INc 718, 625 and 750
- Working pressure 645 barg (#2500)

## Available materials:

- Carbon Steel A105 or LF2
- Stainless Steel grade 316(L), 304(L)
- Duplex F51 and superduplex F53,F55
- Other special alloys



# EXPANSIONS

Two new building for  
a total of more than  
6000 sqm will be  
available by the end  
of 2016

