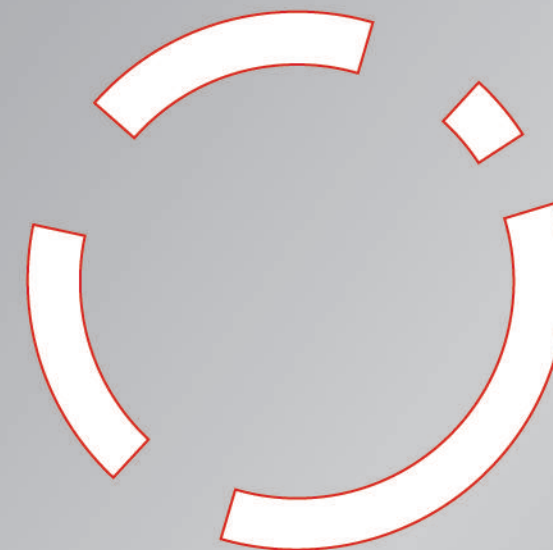




EYES TELL YOUR HEART

눈은 당신의 마음을 얘기합니다.





Without saying...
'I love you',
'I'm happy',
'Yes, I can'...
Eyes tell your heart.

Our milestones



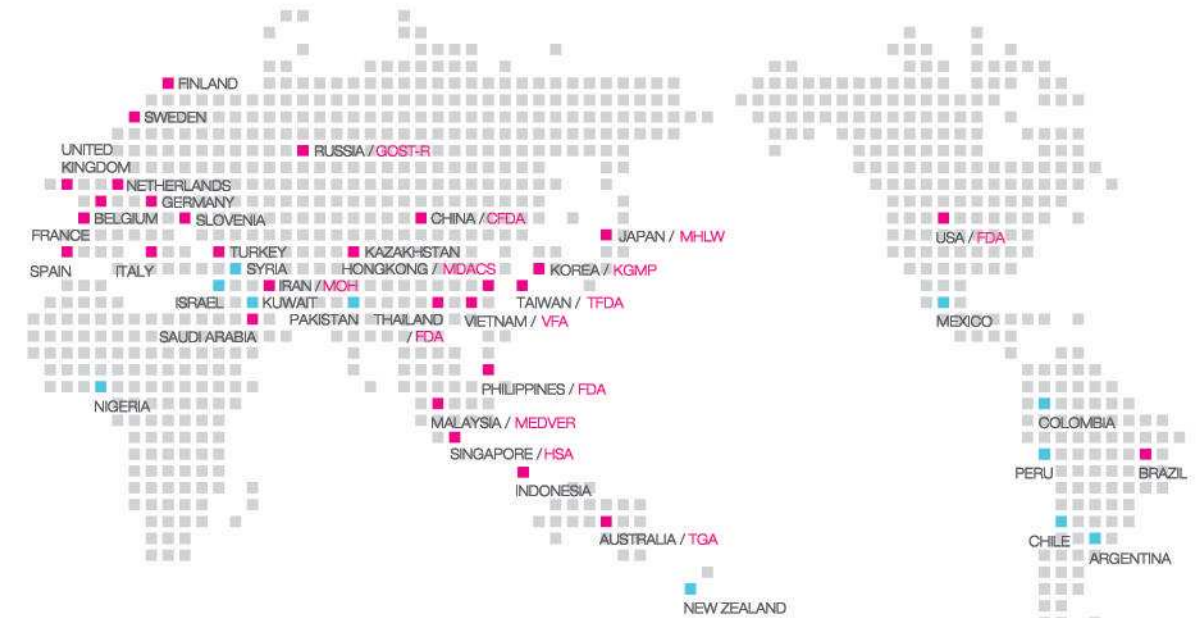
WORLDWIDE GEO MEDICAL

EUROPE

ISO13485 / CE1370

■ Certified by the Country

■ On Sale in the Country



Partnership for Success

INTERNATIONAL CERTIFICATES



ABOUT GEO MEDICAL

We are not merely producing color contact lenses but are rather involved in designing human eyes from the perspective of beauty



'Defining Fashion to the Eyes of the World' has been our ultimate goal since our company was established. In the pursuit of our goal, we have followed an endless road of researching beautiful eyes in the world we live in today. We have been helping many people express genuine beauty through their eyes.

We agree with the poet who recited that **"Eyes are an expression of one's mind."** So we are trying to put boundless energy and endless efforts into developing high quality lenses in order to assist people to enjoy expressing their minds through the eyes.

Rest assured that **GEO MEDICAL R&D** Center is equipped with a full range of high-tech equipment for designing and developing high quality contact lenses. Thanks to our skilled manpower and state-of-the-art facilities, we are able to make the contact lenses not just brilliant and fashionable but also safe for taking better care of the eyes.

R&D _ RESEARCH PHILOSOPHY

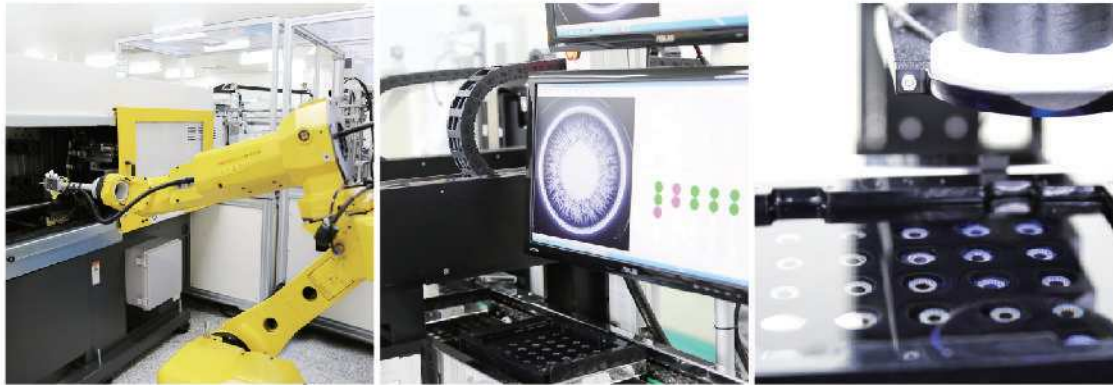
Our Research and Development Team has devoted their time and energy to creating unique, reliable methods and solutions for assisting people to present their images in a wide variety of ways by statistically patterning and systematically analyzing the visual appearance of people in certain categories. The results of this official exertion serve as a basis for the development of our contact lenses.

Research Process



Researching and Analyzing
Brain Storming

R&D _ ENVIRONMENT



Automated Production System

It is capable of processing a wide variety of types of tasks simultaneously and automatically and controlled by computers.



All the Process of Production in Clean Room Facilities

The state-of-the-art Clean Room facilities and equipments are equivalent to the semiconductor manufacturing system to produce high-quality products



Cast Molding System

Very sophisticated and advanced process for a more reliable product and mass-production

ABOUT _ TECHNOLOGY

Cast molding system is a manufacturing contact lens process, in which contact lenses can be manufactured in large numbers by a full-mold process involving disposable molds comprised of an anterior mold half and a posterior mold half. Cast molding system is operated by depositing a curable mixture of polymerizable monomers in a mold cavity of the desired geometric shape for a contact lens, solidifying the monomer mixture, and separating the formed lens from the posterior and anterior mold halves.

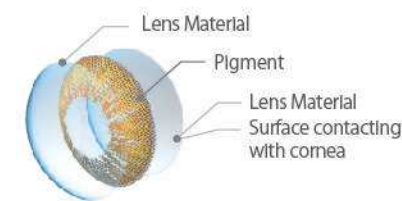
1. Inner Layer Coating



2. Pigment Printing



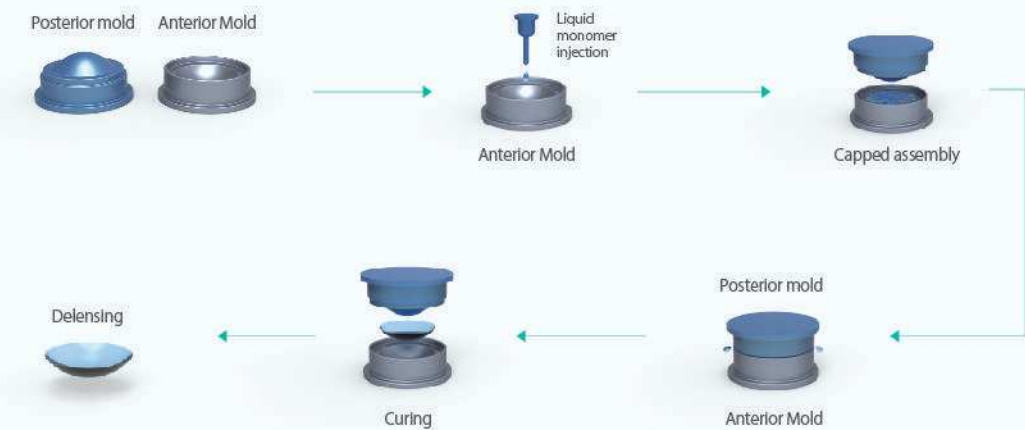
* Section View of the Color Lens



3. Outer Layer Coating



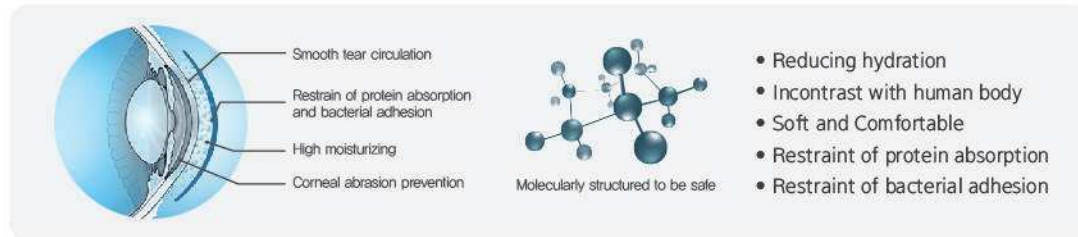
Cast-Molding Manufacturing Process



ABOUT _ PC TECHNOLOGY

1. PC + Silicone Hydrogel

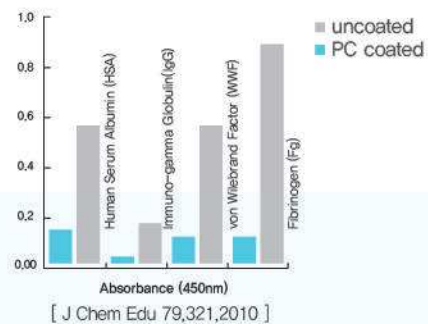
PC (Phosphorylcholine) is a medical byproduct for the use of artificial heart and blood vessel stent, which has recently been used in medical devices to improve biocompatibility, reduce protein absorption, restrain bacterial adhesion, and reduce inflammatory response. It has high moisture content, prevents corneal abrasion, and allows smooth tear circulation.



1) Restraint on Protein Adsorption and Bacterial Adhesion.

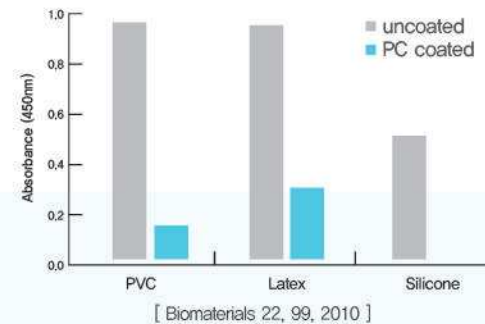
PC material in Eyeniq prevents protein absorption which offers poor visibility and bacterial adhesion for posing a lower risk of eye infection.

| Protein Absorption Test



It is durable and comfortable on the eye surface because it prevents protein and foreign material absorption.

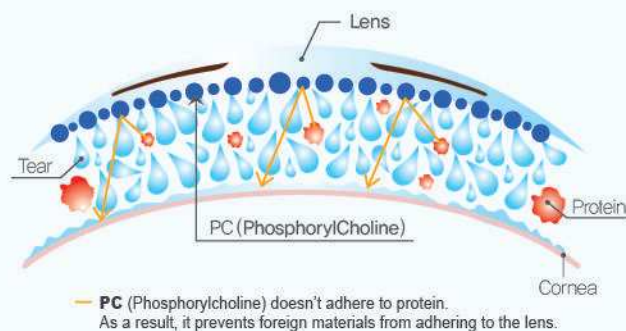
| Bacterial Adhesion Test



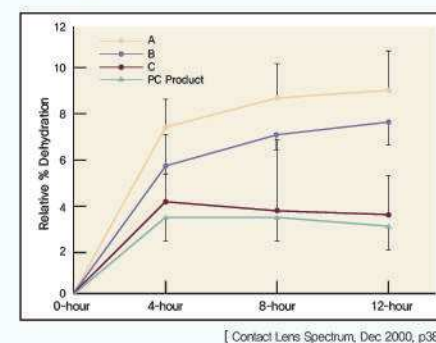
It is safe for eyes because it prevents bacterial adhesion.

2) Reducing Hydration

Enhanced Comfort and More Moisture

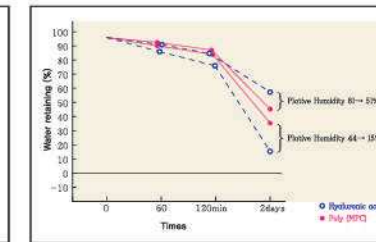
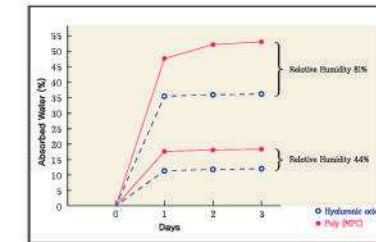


| Comparison Test



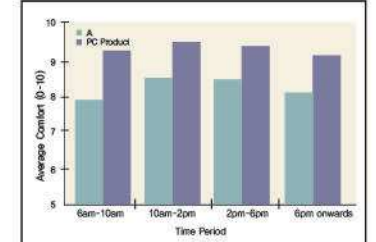
ABOUT _ PC TECHNOLOGY

| Moisture Enhanced



[IFSCC VENZIA Pola R&D lab]

| Phosphorylcholine VS Other Non-Phosphorylcholine



[Contact Lens Spectrum, Dec 2000, p38]

2. Silicone Hydrogel

Silicone hydrogel contact lenses are advanced gas-permeable contact lenses that prevent bloodshot eyes, dry eye syndrome, and a swelling on corneas by allowing much more oxygen transmission through the lens to the cornea than general soft ("hydrogel") contact lenses. In fact, silicone hydrogel lenses enable up to five times more oxygen to reach the cornea than general hydrogel lenses.

3. PCMLC™

The PCMLC Technology is to make the color pigments that have been approved by the FDA embedded between two thin layers of PC(Phosphorylcholine) material, which prevents the pigments from direct contact with the cornea.



PCMLC™ technology prevents color pigments from direct contact with the cornea.

4. UV Blocking

GEO contact lens is capable of reducing the amount of UV radiation that reaches the surface of eyes by absorbing UV radiation, which provides protection against transmission of harmful UV radiation to the cornea. GEO contact lens gives better protection than sunglasses which allow the sun's harmful UV rays to reach eyes through sides or around the sunglasses.

5. Enhanced Edge Design

The enhanced edge design has made GEO contact lens less irritating in the movement of eyeballs and improved the circulation of natural moisture.

GEOLICA | EURO



BRAND PRODUCT

GEOLICA brand color contact lenses not only provide you with a wide range of selection but also correct vision at the same time.

GEOLICA | EURO **LADY**

GEOLICA LADY generates an impressive look with attractive colors. Naturally change your eye color and give a good impression to everyone.



GEOLICA | EURO **CELINE**

GEOLICA CELINE creates a truly elegant and luxurious color on your eyes. Upgrade your style by wearing high quality color lenses.



GEOLICA | EURO **CIRCLE**

GEOLICA CIRCLE gives an effect of enlarged pupils. This will give your natural color more definition and make your eyes look larger.



PRODUCT SPECIFICATIONS

Product	Packaging	Material	Water Content	DIA	B.C	C.T (-3.00D.mm)	Power Range
GEOLICA LADY,CELINE,CIRCLE	2 pcs / pack	Polymacon	40%	14.2mm	8.6mm	0.08mm	*Plano ~ -5.00D(-0.25D step) *-5.00D ~ -10.00D(-0.50D step)



당신이 그토록, 원하고 가지고 이루고 싶은



We can't see the value or the beauty that exists within you, but not wanting to live an ordinary life makes you special.
Be confident and tend to the pursuit of your dreams.

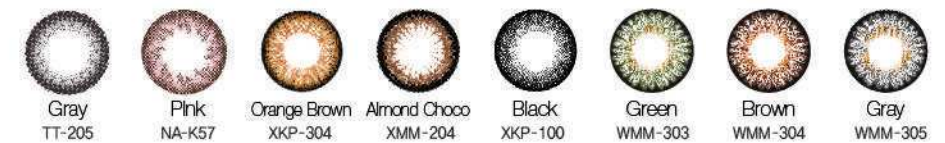
BRAND PRODUCT

MIMI Series are considered to be the most 'LOVELY AND CUTE'.

MIMI's are Korea's and Japan's most popular lens design. Many celebrities are wearing our MIMI Series.
With MIMI, you can become one of the 'Glittering' celebrities.



PRINCESS Series



CAFE Series

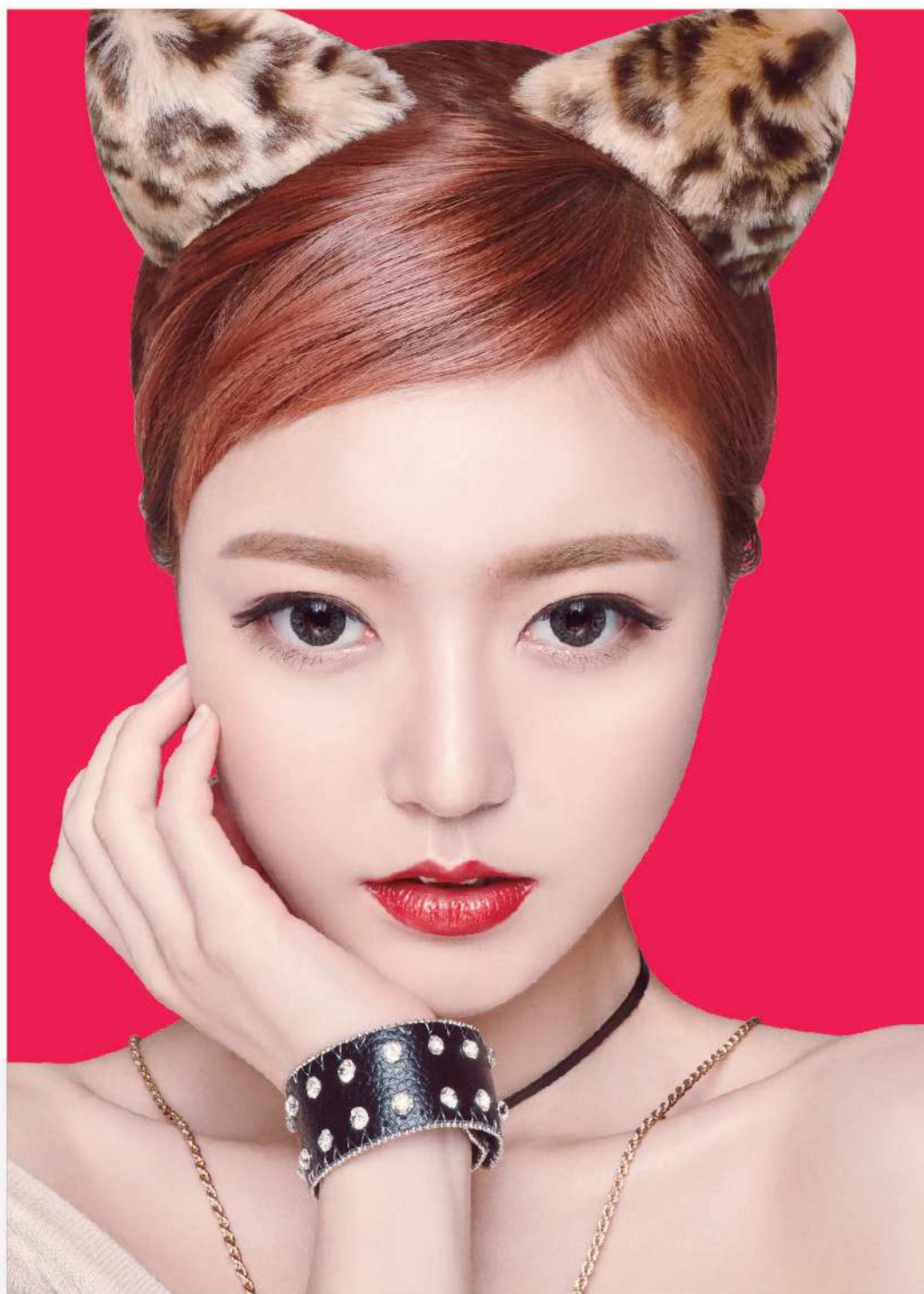


PRODUCT SPECIFICATIONS

Product	Packaging	Material	Water Content	DIA	B.C	C.T (-3.00D,mm)	Power Range
PRINCESS (TT-205, NA-K57)	1 pcs / pack	Polymacon	40%	14.2mm	8.6mm	0.08mm	*Plano ~ -6.00D(-0.25D step) *-6.00D ~ -8.00D(-0.50D step)
PRINCESS (XKP-304, XKP-100)	Vial	Polymacon	40%	14.2mm	8.6mm	0.08mm	
PRINCESS (WMM-303, WMM-304, WMM-305)	Vial	Polymacon	40%	14.5mm	8.7mm	0.08mm	
PRINCESS (WMM-303, WMM-304, WMM-305)	Vial	Polymacon	40%	14.8mm	8.8mm	0.08mm	
CAFE Series	Vial	Polymacon	40%	14.8mm	8.8mm	0.08mm	*Plano ~ -6.00D(-0.25D step)
CAFE (WMM-700)	Vial	Polymacon	40%	14.8mm	8.8mm	0.08mm	Plano Only

HoliCat® 홀리캣

猫한 매력에 빠지다



She has five captivating charming qualities, Sexy, Cuti, Funky, Barbie and Lovely. Enjoy the world with a variety of charm. With HoliCat you can change your concept to match your style.

GEO MEDICAL CONTACT LENS

BRAND PRODUCT

Fashion on Your Eyes, enjoy the difference with a various style of color lens.

Find your style out of 5 HOLICAT series and define yourself.

SIAMESE Series



SHINING Series



PRODUCT SPECIFICATIONS

Product	Packaging	Material	Water Content	DIA	B.C	C.T (-3.00D.mm)	Power Range
XHC-505,502,507, 506,504,500	2 pcs / pack	Polymacon	40%	14.5mm	8.7mm	0.08mm	*Plano ~ -6.00D(-0.25D step) *-6.00D ~ -10.00D(-0.50D step)
HB2-X506	1 pcs / pack	Polymacon	40%	14.5mm	8.7mm	0.08mm	
NHS-35, NHL-34, NHC-34,35 NHF-32	1 pcs / pack	Polymacon	40%	14.2mm	8.6mm	0.08mm	



BRAND PRODUCT

Natural elegant styles, Natural color with delicate pattern fits the eye perfectly creating an elegant look



H₂O NATURAL MOISTURE
Helps retain natural moisture. The lens surface protects the eyes from dryness.



OXYGEN DELIVERY
Allows natural oxygen flow to the cornea, which provides comfort.



UV BLOCKING
Gives you the highest UV protection for all time.

PCMLC™

The PCMLC Technology embeds the color pigments between two thin layers of PC(PhosphorylCholine) material.

GEOICA EYEVELYN



Brown
SI-B24



Choco
SI-A27

GEOICA EYEVELYN CLASSIC



Eyevelyn Classic
Clear lens

GEOICA EYEVELYN S



Brown
SI-D24



Choco
SI-D26

GEOICA EYEVELYN GRANG



Brown
SI-D34



Choco
SI-D36

PRODUCT SPECIFICATIONS

Product	Packaging	Material	Water Content	DIA	B.C	C.T (-3.00D.mm)	Power Range
EYEVELYN, EYEVELYN S, EYEVELYN GRANG	Vial	PC + Si · Hydrogel	48%	14.2mm	8.7mm	0.08mm	*Plano, -0.50D, *-1.00D~ 5.00D(0.25D step) *-5.00D ~ -10.00D(0.50D step)
EYEVELYN CLASSIC	Vial	Si · Hydrogel	48%	14.2mm	8.7mm	0.08mm	

COCO MIMI
2 WEEKS LENSES

코코미미와 사랑에 빠지다.



GEO MEDICAL CONTACT LENS

BRAND PRODUCT

"Fall in love with COCO MIMI" COCO MIMI will make your eyes look sweet, defined and attractively beautiful.
Comfortable and moist for 2 weeks. Perfect natural looking colors.

GEOICA COCO MIMI



Stay moist and beautiful for 2 weeks. Perfect combination of comfort and natural looking colors.

GEOICA COCO 2W

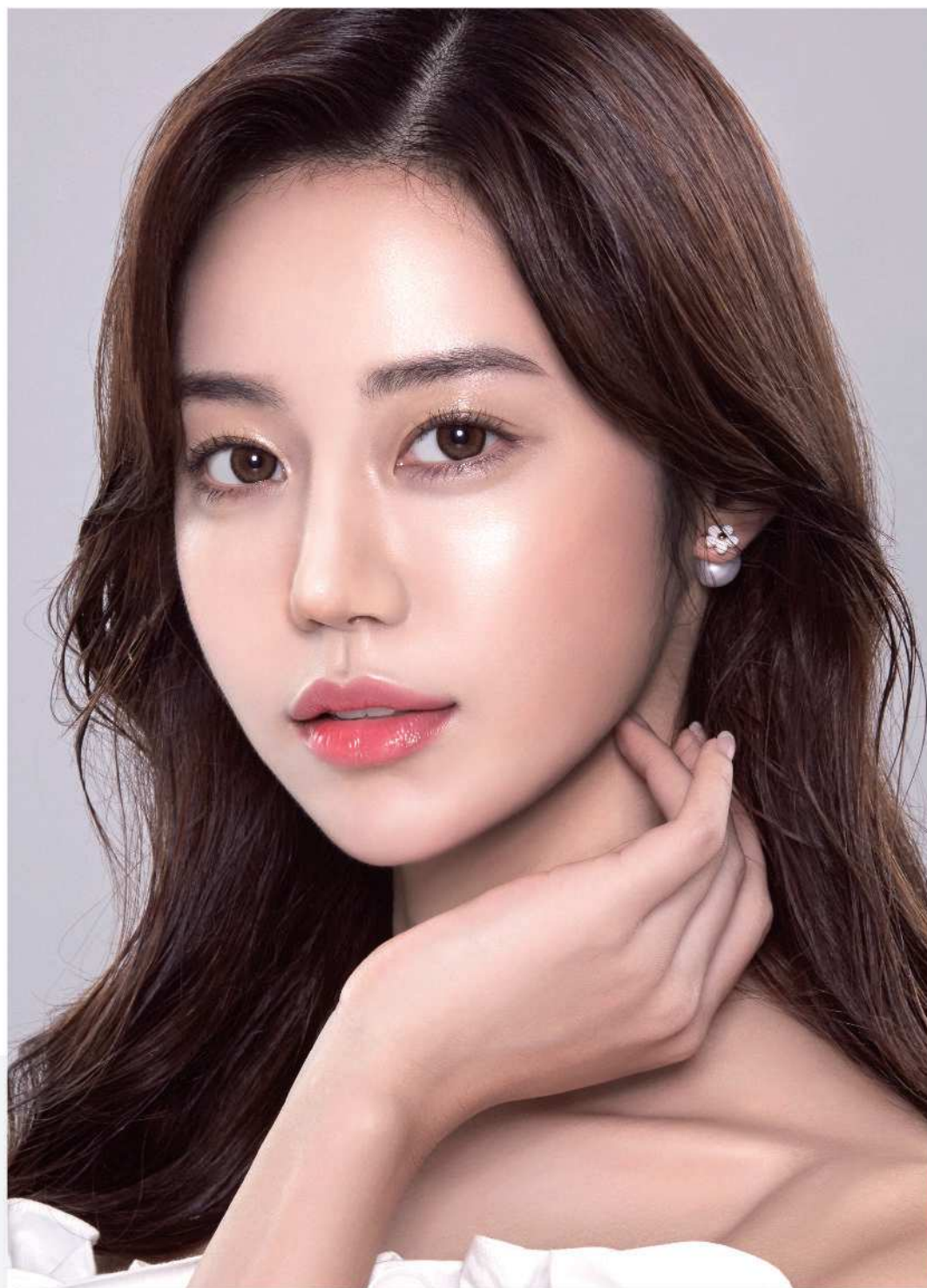


PRODUCT SPECIFICATIONS

Product	Packaging	Material	Water Content	DIA	B.C	C.T (-3.00D.mm)	Power Range
COCO MIMI	6 pcs / pack	Polymacon	40%	14.2mm	8.6mm	0.08mm	*Plano ~ -5.00D(-0.25D step) *-5.00D ~ -8.00D(-0.50D step)
COCO 2W (NA-K34)	4 pcs / pack	Polymacon	40%	14.2mm	8.6mm	0.08mm	
COCO 2W (XNA-K37)	4 pcs / pack	Polymacon	40%	14.5mm	8.8mm	0.08mm	

1-DAY 아이닉 eyeiniq
PC + Si-Hydrogel

또렷하고, 더 자연스러운
1-DAY EYENIQ



A special gift from Geolica! For your special day!
Geolica Eyeniq is for your everyday special needs
Geolica technology has a distinct and natural looking design, It captivates your health and beauty.

GEO MEDICAL CONTACT LENS

BRAND PRODUCT

Adding a special touches to your eyes

Phosphorylcholine (PC) is a biocompatible material to the human body, which is used for artificial hearts and stents.



H₂O NATURAL MOISTURE
Helps retain natural moisture. The lens surface protects the eyes from dryness.



OXYGEN DELIVERY
Allows natural oxygen flow to the cornea, which provides comfort.



UV BLOCKING
Gives you the highest UV protection for all time.

PCMLC™

PCMLC™
The PCMLC Technology embeds the color pigments between two thin layers of PC(PhosphorylCholine) material.



[10 pcs / 30 pcs]



Milky Brown
DY-G14



Mocha Choco
DY-G16



Sweet Gray
DY-G15

PRODUCT SPECIFICATIONS

Product	Packaging	Material	Water Content	DIA	B.C	C.T (-3.00D.mm)	Power Range
1-DAY EYENIQ	10 pcs / pack	PC + Si-Hydrogel	48%	14.2mm	8.7mm	0.08mm	*Plano, -0.50D, *-1.00D ~ 5.00D(0.25D step) *-5.00D ~ -10.00D(0.50D step)
1-DAY EYENIQ	30 pcs / pack	PC + Si-Hydrogel	48%	14.2mm	8.7mm	0.08mm	



BRAND PRODUCT

Wear Fashion Color Lens Every day and Create New Styles.

One Day Color Lens, EYENIQ, is the convenient daily disposable contact lens with incredible comfort features and exceptional breathability. Without the need for solutions cleaning or maintenance



Yellowy Brown
XDY-F34



Bluey Gray
XDY-F35



Pinkloet
XDY-F31

PRODUCT SPECIFICATIONS

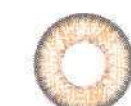
Product	Packaging	Material	Water Content	DIA	B.C	C.T (-3.00D.mm)	Power Range
1-DAY EYENIQ MAGIC COLOR	10 pcs / pack	Polymacon	38%	14.5mm	8.6mm	0.08mm	*Plano ~ -6.00D(-0.25D step) *-6.00D ~ -10.00D(-0.50D step)



BRAND PRODUCT

Wear Fashion Color Lens Every day and Create New Styles.

One Day Color Lens, EYENIQ, is the convenient daily disposable contact lens with incredible comfort features and exceptional breathability. Without the need for solutions cleaning or maintenance



GLAM Brown
DY-F64



GLAM Gray
DY-F65

PRODUCT SPECIFICATIONS

Product	Packaging	Material	Water Content	DIA	B.C	C.T (~3.00D.mm)	Power Range
1-DAY EYENIQ MAGIC COLOR	10 pcs / pack	Polymacon	38%	14.2mm	8.6mm	0.08mm	*Plano ~ -6.00D(-0.25D step) *-6.00D ~ -10.00D(-0.50D step)



OEM PRODUCT



H₂O NATURAL MOISTURE
Helps retain natural moisture. The lens surface protects the eyes from dryness.



OXYGEN DELIVERY
Allows natural oxygen flow to the cornea, which provides comfort.



UV BLOCKING
Gives you the highest UV protection for all time.

PCMLC™

PCMLC™
The PCMLC Technology embeds the color pigments between two thin layers of PC(PhosphorylCholine) material.

SECRISS 3CON CORAL

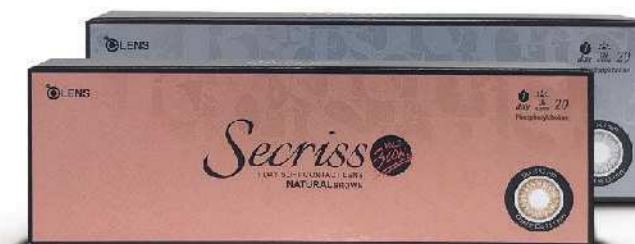


Coral Brown
DY-H14



Coral Gray
DY-H15

SECRISS 3CON NATURAL



Natural Brown
DY-H24



Natural Gray
DY-H25

PRODUCT SPECIFICATIONS

Product	Packaging	Material	Water Content	DIA	B.C	C.T (-3.00D.mm)	Power Range
SECRISS 3CON CORAL	20 pcs / pack	PC + Si · Hydrogel	48%	14.2mm	8.7mm	0.08mm	*Plano, -0.50D, *-1.00D ~ 5.00D(0.25D step) *-5.00D ~ -10.00D(0.50D step)
SECRISS 3CON NATURAL	20 pcs / pack	PC + Si · Hydrogel	48%	14.2mm	8.7mm	0.08mm	

Spanish.
SPANISH VISUAL INSIGHT OF BEAUTY



OEM PRODUCT



H₂O NATURAL MOISTURE
Helps retain natural moisture. The lens surface protects the eyes from dryness.



OXYGEN DELIVERY
Allows natural oxygen flow to the cornea, which provides comfort.



UV BLOCKING
Gives you the highest UV protection for all time.

PCMLC™
The PCMLC Technology embeds the color pigments between two thin layers of PC(PhosphorylCholine) material.



[10 pcs / 20 pcs]



Brown
DY-H44



Gray
DY-H45

PRODUCT SPECIFICATIONS

Product	Packaging	Material	Water Content	DIA	B.C	C.T (~3.00D.mm)	Power Range
SPANISH 1-DAY	10 pcs / pack	PC + Si · Hydrogel	48%	14.2mm	8.7mm	0.08mm	*Plano, -0.50D, *-1.00D ~ 6.00D(0.25D step) *-6.00D ~ -10.00D(0.50D step)
SPANISH 1-DAY	20 pcs / pack	PC + Si · Hydrogel	48%	14.2mm	8.7mm	0.08mm	

ANNA SUI

PREMIUM COLOR CONTACT LENS



GEO MEDICAL CONTACT LENS

COLLABORATION PRODUCT



H₂O NATURAL MOISTURE
Helps retain natural moisture. The lens surface protects the eyes from dryness.



OXYGEN DELIVERY
Allows natural oxygen flow to the cornea, which provides comfort.



UV BLOCKING
Gives you the highest UV protection for all time.

PCMLC™

PCMLC™
The PCMLC Technology embeds the color pigments between two thin layers of PC(PhosphorylCholine) material.

ANNA SUI DRESSY



ANNA SUI ROSEBERRY

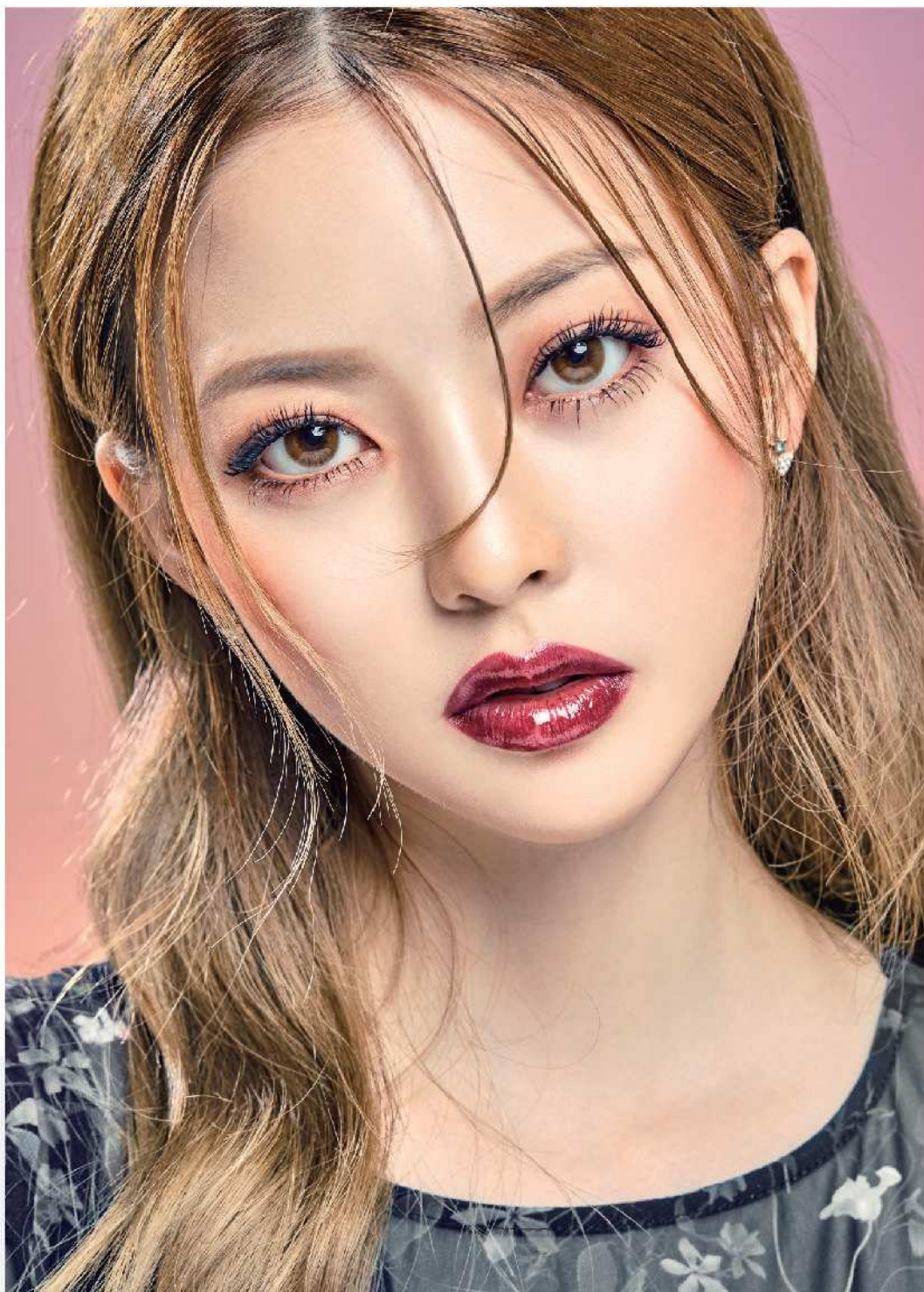


PRODUCT SPECIFICATIONS

Product	Packaging	Material	Water Content	DIA	B.C	C.T (-3.00D.mm)	Power Range
ANNA SUI DRESSY	6 pcs / pack	PC + Si · Hydrogel	48%	14.2mm	8.7mm	0.08mm	*Plano, -0.50D, *-1.00D ~ 5.00D(0.25D step) *-5.00D ~ -10.00D(0.50D step)
ANNA SUI ROSEBERRY	6 pcs / pack	PC + Si · Hydrogel	48%	14.2mm	8.7mm	0.08mm	

ANNA SUI

PREMIUM COLOR CONTACT LENS



GEO MEDICAL CONTACT LENS

COLLABORATION PRODUCT



H₂O NATURAL MOISTURE
Helps retain natural moisture. The lens surface protects the eyes from dryness.



OXYGEN DELIVERY
Allows natural oxygen flow to the cornea, which provides comfort.

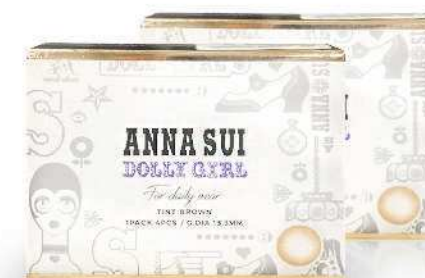


UV BLOCKING
Gives you the highest UV protection for all time.

PCMLC™

The PCMLC Technology embeds the color pigments between two thin layers of PC(Phosphorylcholine) material.

ANNA SUI DOLLY GIRL



TINT Brown
SI-C94

Hydrophilic Soft Contact Lens made of PC(Phosphorylcholine).
It makes your eyes sparkled and brilliant by a delicate pattern with brown color.



3con Brown
SI-C54



3con Gray
SI-C55



Modern Brown
SI-C74

PRODUCT SPECIFICATIONS

Product	Packaging	Material	Water Content	DIA	B.C	C.T (-3.00D.mm)	Power Range
ANNA SUI DOLLY GIRL	4 pcs / pack	PC + Si · Hydrogel	48%	14.2mm	8.7mm	0.08mm	*Plano ~ -5.00D(-0.25D step) *-5.00D ~ -8.00D(-0.50D step)
ANNA SUI MODERN, ANNA SUI 3CON	Vial	PC + Si · Hydrogel	48%	14.2mm	8.7mm	0.08mm	*Plano ~ -5.00D(-0.25D step) *-5.00D ~ -8.00D(-0.50D step)

EYES TELL YOUR HEART

눈은 당신의 마음을 얘기합니다.

GEOLICA EURO	COCOMIMI 2 WEEKS LENSES	HoliCat® 홀리카트
1-DAY 아이닉스 eyeniz PC + Si Hydrogel	1-DAY 아이닉스 eyeniz MAGIC COLOR SOFT CONTACT LENS	PC+Silicone 아이블린 Grang 그랑
mimi®	Secriss® 1 DAY SOFT CONTACT LENS	ANNA SUI DOLLY GIRL
Spanish. SPANISH VIRTUAL SUGGEST OF BEAUTY	ANNA SUI PREMIUM COLOR CONTACT LENS	OLENS BEAUTY & HEALTHY EYESTYLING

GE@medical®
CONTACT LENS INNOVATION

[본사] 광주광역시 북구 첨단벤처소로38번길 20-10
20-10, Cheomdan venture so-ro, 38beon-gil, Buk-gu, Gwangju, Korea
TEL +82,62,974,5005 / FAX +82,62,974,5006 / WEB www.geolicalens.com

[제2제조소] 광주광역시 북구 첨단연신로398번길 7
7, Cheomdannyeonsin-ro 398beon-gil, Buk-gu, Gwangju, Korea
TEL +82,62,573,5335 / FAX +82,62,573,5336

Copyright © 2002-2018 GEO MEDICAL Co., Ltd. All Rights Reserved.