

# Wefie Robostick™ S01-001

Automatic Angle Adjustment  
Bluetooth integrated Selfie Stick  
For Photo & Video

## User Manual

### Introduction

- Is there other way to adjust camera angles without touching the camera?
- Has the hassle of having to fold/unfold the selfie stick ever deterred you from changing the camera angles?
- Taking wide-angle selfies with a conventional selfie stick is a distant dream because of limited angles.
- Shaking selfie sticks delivers unstable and blurred panorama shots.

**Now,**

**Wefie Robostick™ with Smart Button® and a Gear Box**

**Enables You to Take Selfies from Numerous Angles**

**- A Quicker and Easier Way, Definitely.**

**Wefie Robostick™ Will Always Be There**

**For the Only One in the World - You.**

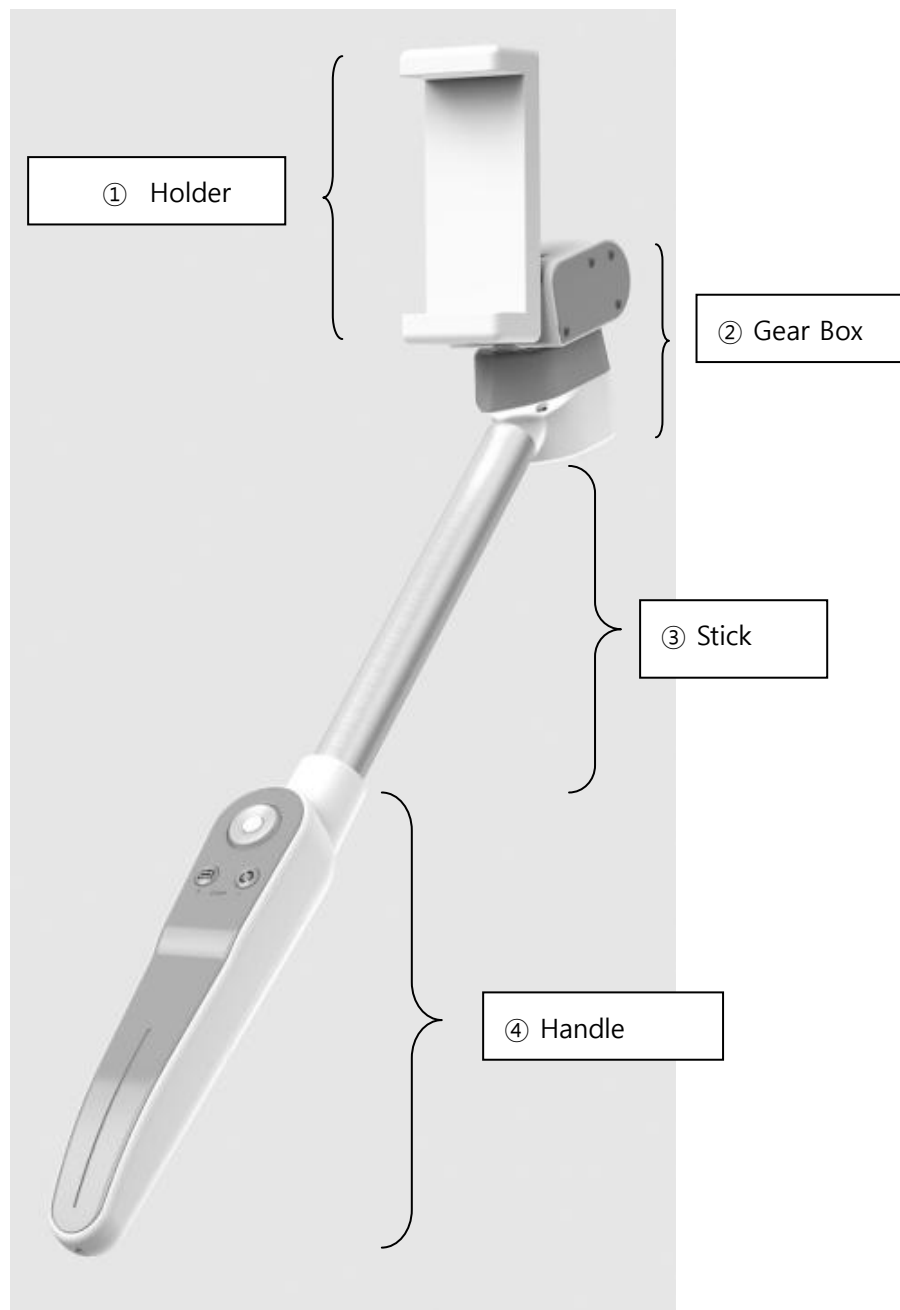
*By Pressing a Single Button on the Wefie Robostick™ S01-001,  
Automatic Angle Adjustment,  
Automatic Rotation, and  
Automatic Photo Shoots Come True.  
Take More Unique Selfies & Wefies with Wider Angles.  
It's Quicker and Easier, Definitely, with Wefie Robostick™.*

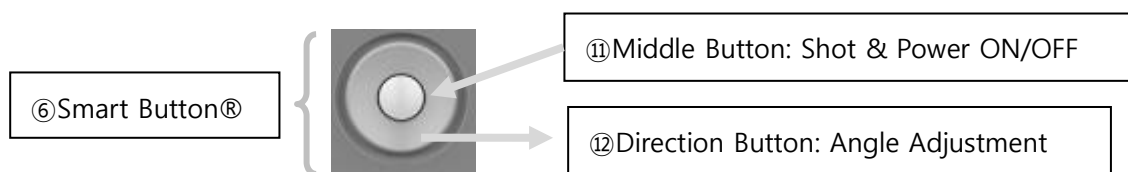
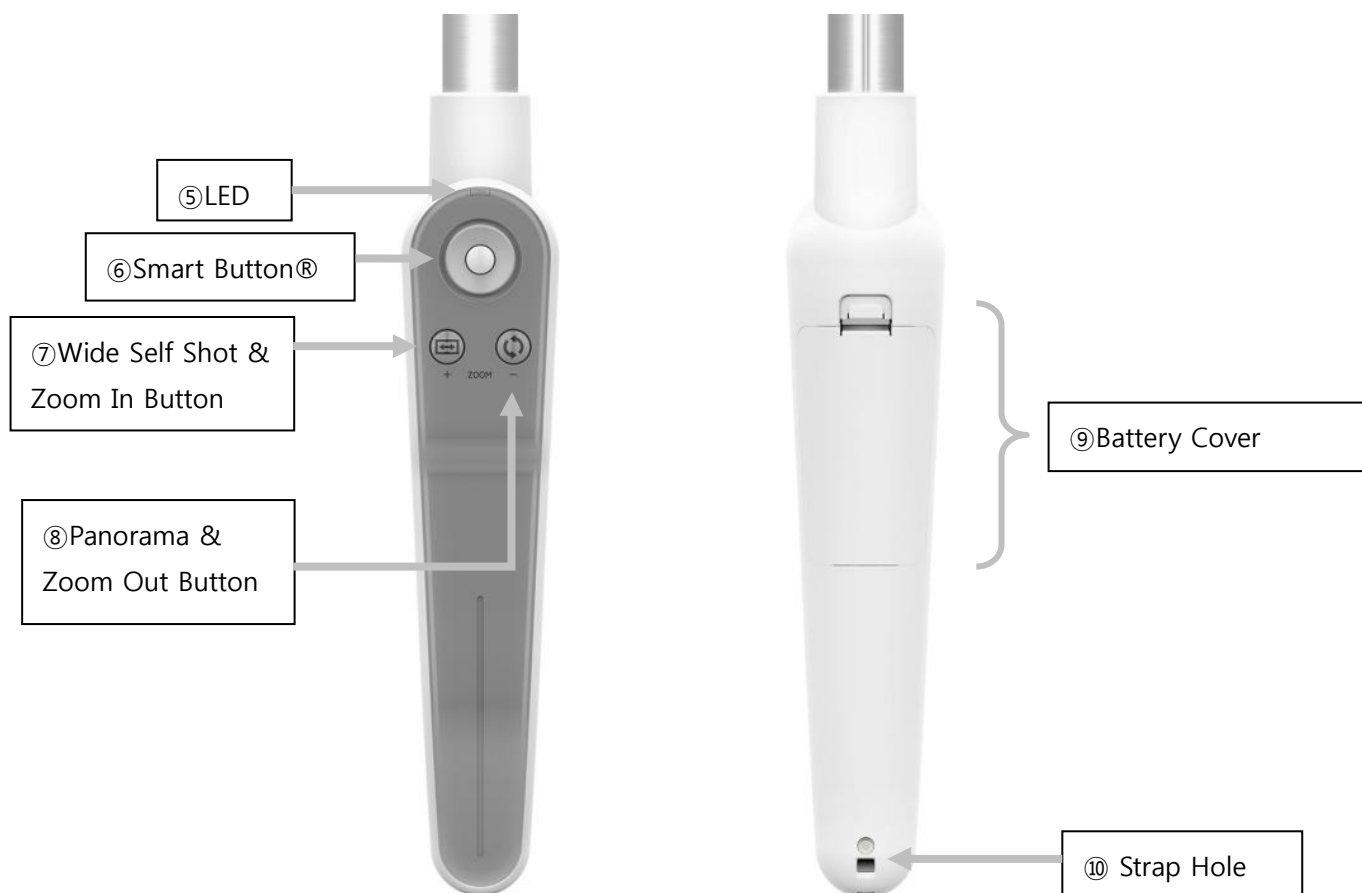
### Features

Wefie Robostick™, the world's sole selfie stick optimized for Samsung Galaxy S6/S6 Edge, enables:

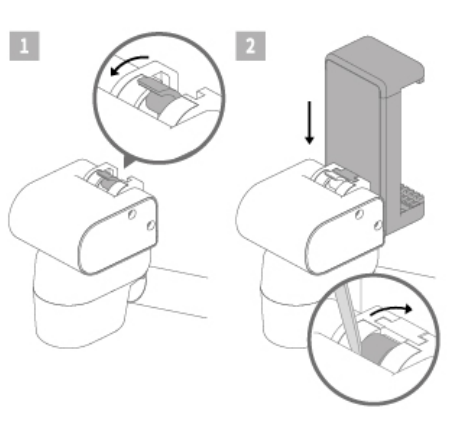
- ▶ Quick Camera function via automatic execution of a camera app
- ▶ Angle adjustment and photo shooting with Smart Button®
- ▶ Wide Self Shot with a single button
- ▶ Automatic Panorama shoots with a single button

## Design Specification





## Holder Installation



### How to Install

- Open the battery cover on the back of the handle, and put two AA alkaline batteries in; when inserting a new battery, make sure that the positive end faces the plus (+) symbol printed on the battery compartment.
- When the power is supplied, the Red LED will blink once.
- Now, pair your smart phone with Wefie Robostick™.
- Install ①Holder onto ②Gear box.
- Place your smart phone onto ①Holder.



### Holder Installation

- Push the locking hook of ②Gear box backward as shown in the picture (on the bottom left).
- Install ①Holder onto ②Gear box.
- Then, the locking hook will stand straight.
- Press the locking hook standing to lock the holder tight.
- When releasing the locking hook, use tweezers or other similar devices.

### How to Pair

- Turn on Bluetooth on your smart phone.
- Press ⑦WideSelfShot and ⑧Panorama buttons for five (5) seconds simultaneously to enter the pairing mode.
- While in the pairing mode, Green ⑤LED blinks fast.
- From your smart phone, search and click “ROBOSTICK S01-001” from the list of connectable Bluetooth devices.
- “ROBOSTIC S01-001” can now be seen from the list of registered devices.
- The camera app of your smart phone will start automatically. (available only for Samsung Galaxy S6 series)

### How to Take Photos

1. **Power ON:**  
Press ⑪Middle Button at the center of ⑥SmartButton® once to turn on the power. The camera app of your smart phone will run automatically. (available only for Samsung Galaxy S6 series)
2. **Angle Adjustment:**  
Press ⑫Direction Button gently to adjust ②Gear Box, 360 degrees, and to get the angle you want.
3. **Zoom In/Zoom Out:**  
 Press ⑦ button long to zoom in, and press ⑧  button long to zoom out.  
(this function may not work with certain types of models or in certain modes)
4. **Taking Photos**  
Press ⑪Middle Button at the center of SmartButton® to take photos.
5. **Returning to Central Position:**  
Click ⑪Middle Button twice quickly to return ②Gear Box to the central position.
6. **Power OFF:**  
Press ⑪Middle Button for three (3) seconds to turn off the power.

### Wide-angle Selfies

- Select the WideSelfShot mode from the camera app of your smart phone.
- Press ⑦WideSelfShot button:
  - Wide-angle selfie shooting will start automatically.
  - Press the WideSelfShot button again to stop taking photos.
- When you finish taking photos, the gear box moves back to its original position.

### Panorama Selfies

1. Select the panorama mode from the camera app of your smart phone.
2. Press ⑧Panorama button:

- Moving to the right, Panorama shots will be taken.
- Press the Panorama button again to stop taking panorama shots.
- 3. When you finish taking photos, the gear box returns to the central position.

### Low Battery Signal

1. Red ⑤LED will be lit to indicate the battery is running low.
2. With the batteries running low, ⑥SmartButton® will not function properly: the angle will not be adjusted, and WideSelfShot/Panorama buttons will not work.
3. But, photos can be taken and Zoom-in (out) function works as well.

### Power ON/OFF

- **Power ON:**  
Click ⑪Middle Button at the center of SmartButton® once.
- **Automatic Power OFF:**  
Power will be automatically turned off if an idle state without any manipulation lasts ten (10) minutes or more.
- **Manual Power OFF:**  
Press ⑪Middle Button for three (3) seconds; it will return to the central position when power is down.

### Caution

- Do not try to rotate ②gear box as it may damage the product.
- Do not apply excessive force to the stick.
- Do not touch the product with wet hands and do not use the product in an extremely humid environment as it may cause malfunctions or abnormal operations.
- Avoid exposure to excessive heat or cold; it may damage the product.
- Excessive external shock may destroy the parts inside the product.
- Do not try disassembling or converting the product as it may cause abnormal operations.
- Limited functions for certain types of smart phone models; please refer to the company's website for more information.

### Troubleshooting

- **When the product is not working:**
    - Check if Green ⑤LED blinks whenever the buttons are pressed; this is to make sure the power is being supplied.
    - Check if the battery is used up or if the positive/negative ends of batteries face the plus (+), minus (-) symbols printed on the battery compartment correctly.
    - Take out the batteries and put them in again, and then check if Red ⑤LED is lit.
  - **When Red LED is lit or blinks fast:**
    - Replace the batteries.
- ※ **When photography is not working after bluetooth pairing, please check Volume keys function in your smartphone's Camera Settings**
- 👉 **Select Take pictures in Volume keys function for Photography.**
  - 👉 **Select Record video in Volume keys function for Video.**

## Specification

Model name: Wefie Robostick™ S01-001  
Connectivity: Bluetooth Version 4.0  
Transmit frequency: 2.4 GHz ~ 2.4835 GHz  
Communication distance: 10m(30ft)  
Battery: AA x 2 cell  
Max load capacity: 500g  
Closes – Extends: 340mm ~ 670mm  
Flex section: 4  
Color: Black/White  
Weight: 230g  
Support OS: Android 4.4.2 or Later /iOS  
Compatibility: Galaxy Note 5/4, S6/S6 Edge/S6 Edge Plus

Compatibility	Photo shot	Video shot	Angle Adjustment	Panorama	Wide Self Shot	Zoom In&Out
Galaxy S6,Edge,Edge+ Note4,Note5	○	○	○	○	○	○
Samsung Android 4.4.2 or Later	○	△	○	○	x	○
Non Samsung Android 4.4.2 or Later	○	△	○	△	x	△
iOS	○	○	○	x	x	x