

VALCO MELTON

Adhesive Dispensing & Quality Inspection Systems

Packaging Solutions

English Edition

ADVANCE INTO ALL-ELECTRIC

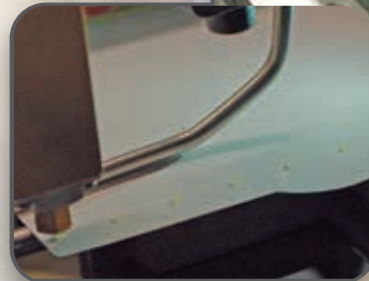
All electric hot melt dispensing systems have been the driving force behind the reshaping of the packaging industry. Join some of the world's leading packagers already benefitting from the Power of Choice™ and let the experts at Valco Melton take your production line to an unparalleled level of efficiency.

CHOICE™ BENEFITS

- 1 More uptime.** Improve the efficiency of your packaging process by increasing your production uptime.
- 2 No plugging.** Functionally eliminate nozzle plugging by working at lower pressures with larger nozzle orifices.
- 3 Less adhesive usage.** 60 to 70% (on average) reduction within the packaging industry.
- 4 No consumable parts.** Elimination of compressed air removes moving parts, seals and frequent parts changes.



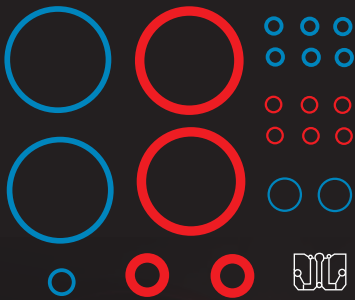
No size limitations. Achieve the smallest bead size by setting the valve into stitch mode through the pattern control.



EcoStitch™ Valves can work at extremely high speeds, providing a clean application with virtually no stringing.

PARTS BREAKDOWN

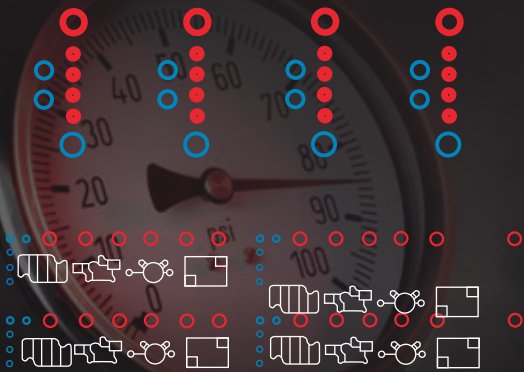
○ = Static Seals ● = Dynamic Seals



Pump Seals



Valve Seals



Air Solenoids

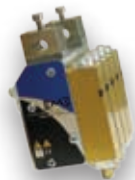


PNEUMATIC SYSTEMS

ELECTRIC SYSTEMS

Electric Systems Feature 3x Fewer Components

The EcoStitch Series revolutionizes hot melt application in packaging and is available in a variety of configurations for requirements in the Packaging Industry.



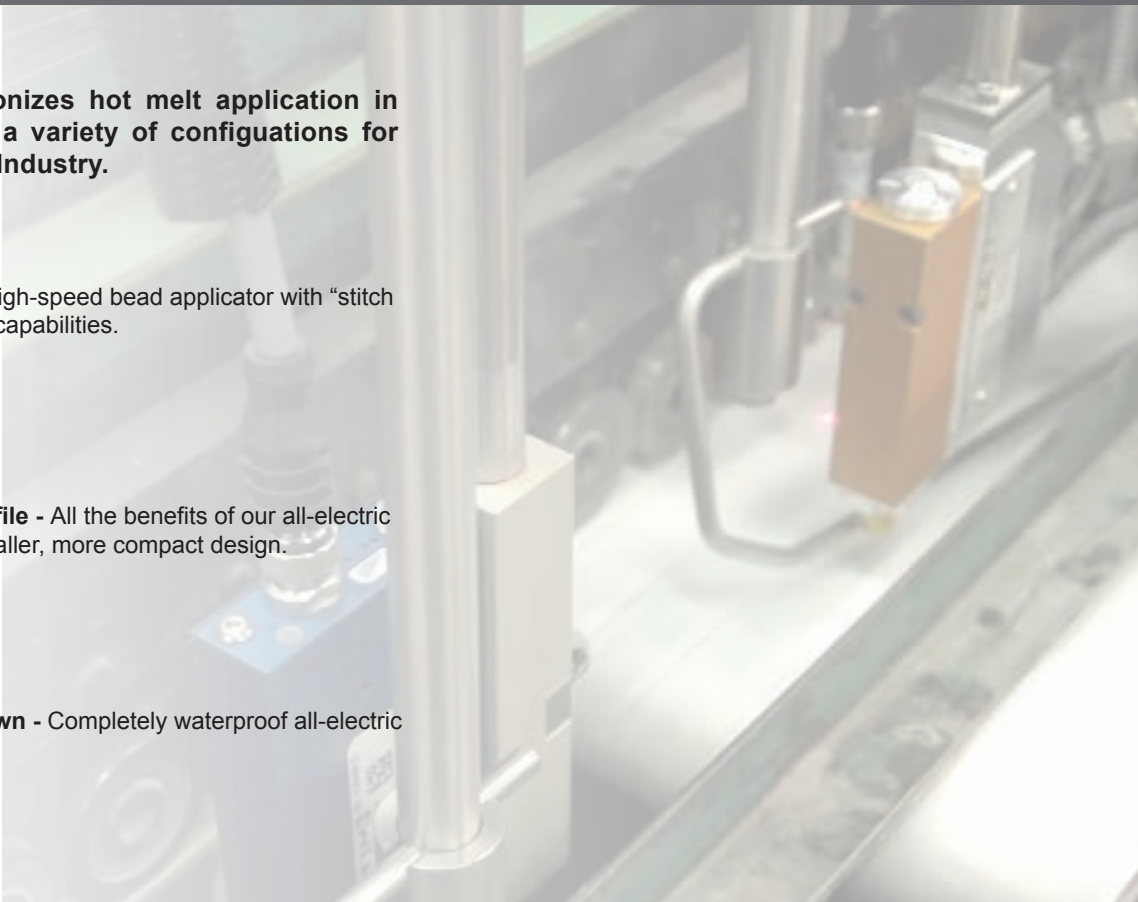
EcoStitch Bead - High-speed bead applicator with “stitch pattern” application capabilities.



EcoStitch Low Profile - All the benefits of our all-electric applicator with a smaller, more compact design.



EcoStitch Washdown - Completely waterproof all-electric applicator.



NEW KUBE SYSTEM

MELT ON DEMAND THE WAY YOU WANT IT.

Designed to allow customers to use the same unit for all their packaging needs, the Kube helps improve system operation by removing degradation problems, as well as minimizes the maintenance and downtime associated with gluing systems.

KUBE BENEFITS

- 1 Melt on demand.** Promote adhesive stability and reduce char by only melting adhesive as you need it.
- 2 Mount anywhere.** Engineered to operate with three different install configurations, the Kube is suitable for both new machine installations, as well as system upgrades/ replacements.
- 3 Simple conversion.** Fully compatible with other industry standard equipment, the Kube retrofits your packaging line without additional investment in hoses, guns or spare parts.
- 4 Operator free.** Enclosed system with integrated auto feed keeps out dirt and debris, and promotes a safer work environment. Also includes manual fill option.
- 5 Zero maintenance.** Strategically designed to automatically feed adhesive, contaminants are left out, eliminating any chance of plugged nozzles.



Connect up to 6 hoses and guns.
Fully compatible with other industry standards.

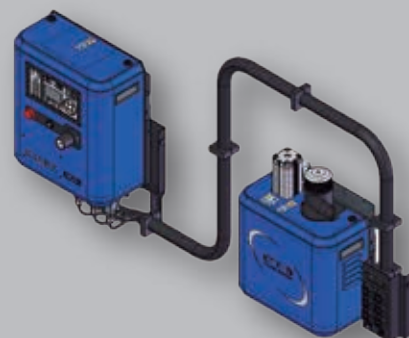
DESIGNED FOR YOUR LINE



Panel
Outside machine mount



Compact
Inside machine mount



Split
Combination, inside / outside machine mount

Rather than work around your existing equipment, the Kube's multiple mount configurations can accommodate installation on virtually any production line for optimal performance while using an adhesive brand of your choice.

MORE THAN A MELT UNIT

The combination of short stroke pneumatic or electric hot melt applicators and the Kube melt-on-demand system results in fewer plugged nozzles and part changes.



EcoStitch™ All-Electric Valves



MK-F Insulated Hot Melt Gun

EC SERIES HOT MELT SYSTEMS

A PACKAGING INDUSTRY STANDARD

Ever since first launched by Valco Melton, the Evolution C Series has become the new and indisputable standard in hot melt dispensing equipment for the packaging industry, whatever your specific application requirements may be.

EC BENEFITS

- 1 Universal installation.** Compact design with common footprint and market standard connections, designed for easy installation in any new or existing packaging line.
- 2 Ease of use.** Quick and easy configuration to adapt to any work requirement.
- 3 Safer operation.** Engineered to minimize safety hazards related with high working temperatures and pressure.
- 4 Top performance.** EC series reset the standard in hot melt dispensing systems by implementing in its configuration top level features. Optional configuration upgrades include fully integrated automatic feeding for completely automated adhesive dispensing.



Integrated Multi-Function Control

THE COMPLETE PACKAGE

Increase your production capabilities and product success with Valco Melton's comprehensive range of hot melt glue guns, designed to cover all application requirements in the packaging industry.

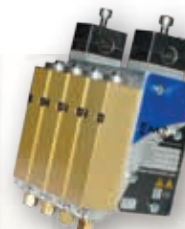


**New MK-F
Insulated Applicators**

<http://delivr.com/2buma>

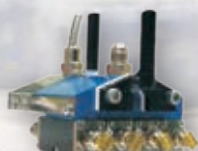
**New EcoStitch™
All-Electric Valves**

<http://delivr.com/2dz6t>



**MF
Hot Melt Guns
with Internal
Integrated Filter**

<http://delivr.com/2fnus>



**LP
Low Profile
Hot Melt Adhesive
Applicators**

<http://delivr.com/2t8zx>



**MZ
Hot Melt Spray
Guns with
Air Heater**

<http://delivr.com/2v5wp>



**ME
Double Effect
(AO/AC)
Adhesive Applicators**

<http://delivr.com/2ujaz>



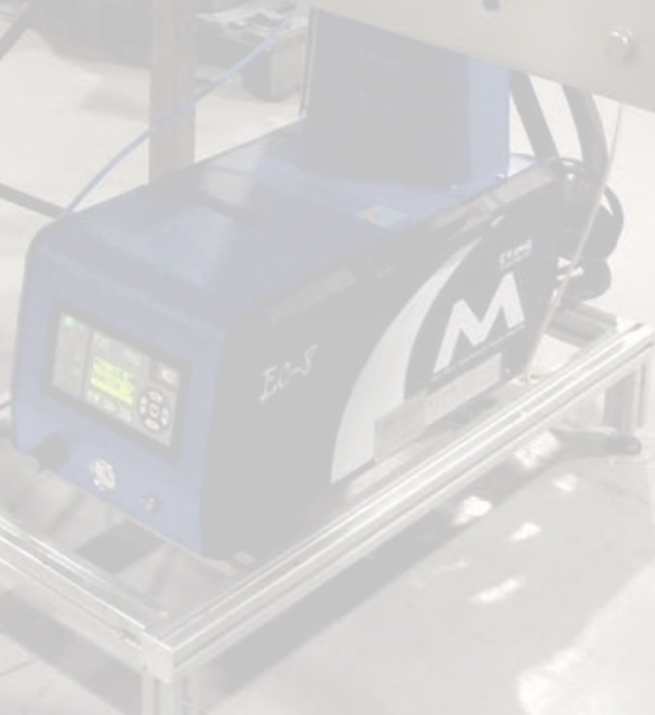
**MS
Modular Guns for
Standard Hot
Melt Applications**

<http://delivr.com/2yeey>



Pattern Controllers

For the most advanced precision gluing experience, a complete line of microprocessor controls are available as both an external accessory to the packaging line or as an integrated feature of the EC Series Unit.



World Headquarters

USA, OH, Cincinnati | Tel: +1.513.874.6550
inquiry@valcomelton.com

America Manufacturing, Sales & Service Centers

Canada, Vancouver, B.C.
ClearVision Technologies
Tel: +1.604.998.4012
inquiry@valcomelton.com

USA West Coast, CA, Petaluma
GMS-Vansco
Tel: +1.707.285.3392 | Fax: +1.707.285.3399
inquiry@gmsvansco.com

Mexico, Mexico D.F.
Tel: +52.55.6278.1727
inquiry@valcomelton.com



South, Southeast, West & Central Asia Sales & Service Centers

Turkey, Istanbul | Tel: +90 212 327 99 71
inquiry@valcomelton.com

India, Bangalore | Tel: +91.80.28602821
inquiry@valcomelton.com

UAE, Sharjah | Tel: +971.521305960
inquiry@valcomelton.com



Europe Manufacturing, Sales & Service Centers

Spain, Navarra, Orcoyen | Tel: +34.948.321.580
Fax: +34.948.326.584 | inquiry@valcomelton.com

France, Valence | Tel: +33 (0) 4.75.78.13.73
inquiry@valcomelton.com

Italy, Milan | Tel: +39.0372.23150
inquiry@valcomelton.com

Italy, Brescia | ERO s.l.r | Tel: +39 030 2731503
inquiry@valcomelton.com

Benelux, The Netherlands | Tel: +31.252.673673
inquiry@valcomelton.com

Hungary, Budapest | Tel: +36.1.214.4705
inquiry@valcomelton.com

UK, England, Telford | Tel: +44.1952.677911
inquiry@valcomelton.com

Germany, Düsseldorf | Tel: +49.211.984.798-0
inquiry@valcomelton.com

Poland, Wrocław | Tel: +48 71 889 04 51
inquiry@valcomelton.com

Direct Sales Centers ●
Distributors Worldwide ●

East Asia Sales & Service Centers

China, Fujian, Xiamen | Tel: +86.592.591.7854
Fax: +86.592.591.7834 | inquiry@valcomelton.com

To find the office
nearest you, visit:
<http://delivr.com/2q54d>
or snap a picture of
this QR Code

