

DIMENSIONS



SPECIFICATIONS

X-ray Source	High frequency generator, rotating-anode X-ray tube
X-ray Detector	Amorphous silicon TFT flat panel detector
Scan Time	7.2 sec
Bore Size	650mm
Image Acquisition	Single scan, 360° rotation
FOV	Transaxial 260mm, length 165mm
Reconstruction Time	Less than 41 sec
Software Function	Patient Management, system control and image acquisition, 3D Cone-Beam tomography reconstruction, DICOM 3D viewer
Power	AC Power 220-230 V~ / 3.5 kVA, 50/60 Hz
Weight	670kg

A NEW PIONEER OF
MOBILE CONE-BEAM CT

Brand-New Artificial Intelligent Technology / Largest Bore and Field of View
Mobile CT for COVID-19 Diagnosis



MAIN FEATURE

Mobile Cone-Beam CT for spine, Head & Neck, Extremity, Lung and Arthrography

COMPACT & MOBILE

Small in size compared to normal CT. And equipped with wheels, so it can be moved.

EASY INSTALLATION

No transformer required. With one wall outlet, it can be installed and used in any shielding facilities or operating room.

LARGE BORE & FIELD OF VIEW

A scan of any body part is possible with offset-detector geometry

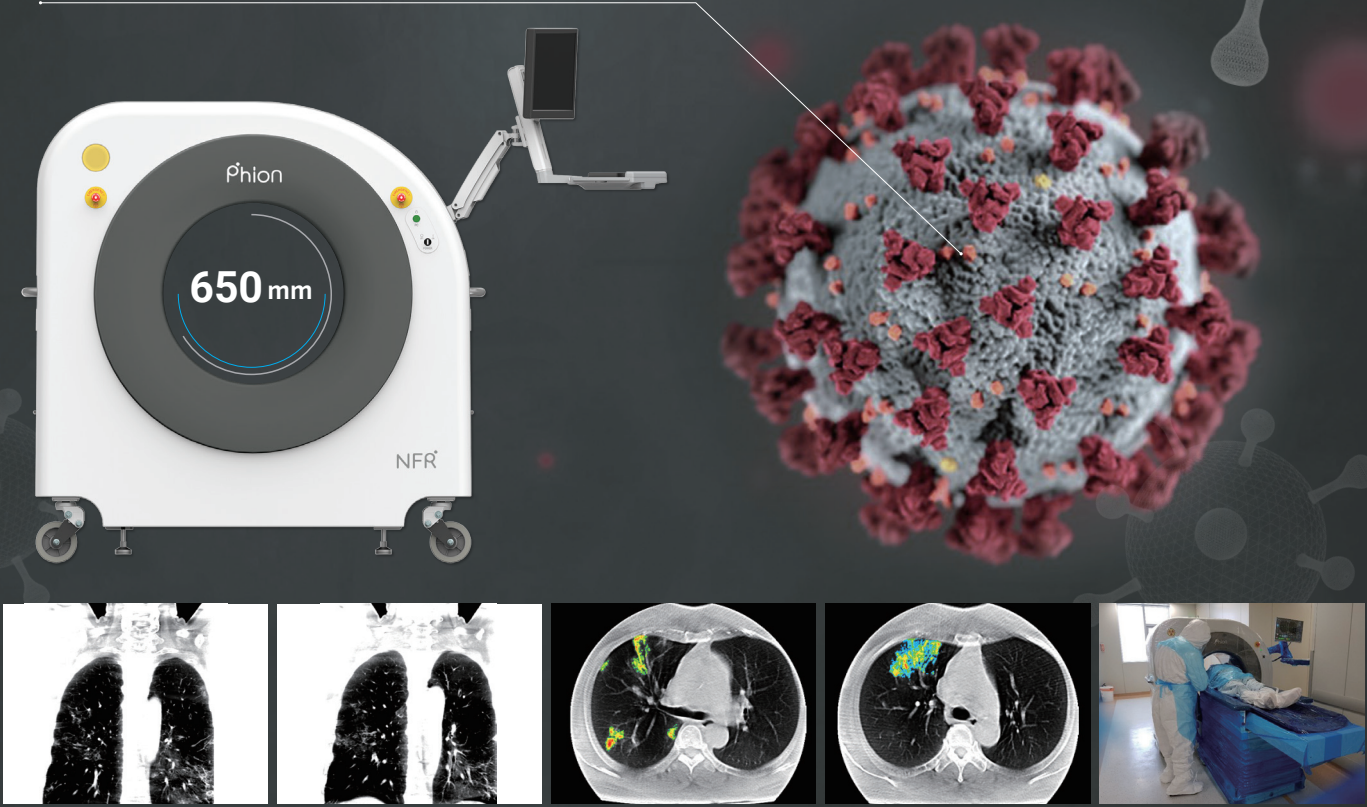
FAST SCAN TIME

Scan time is about 7 seconds and the reconstruction time is about 40 seconds.

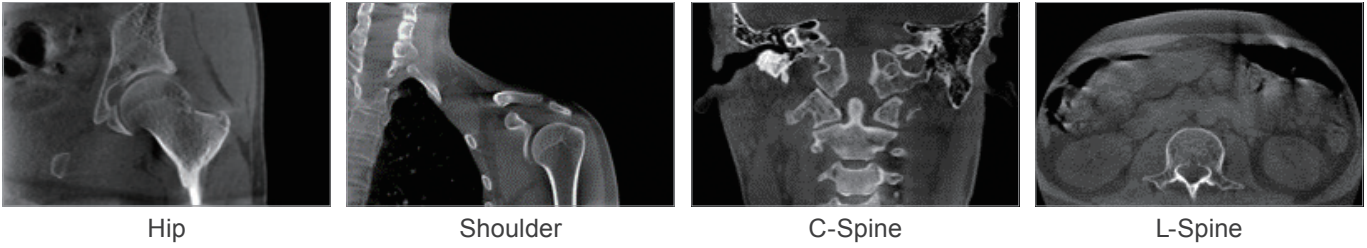
LOW DOSE

Radiation dose is 20% of the normal MDCT, which reduces the burden of radiation exposure to patient.

Phion 2.0 Mobile CT for COVID-19 Pneumonia



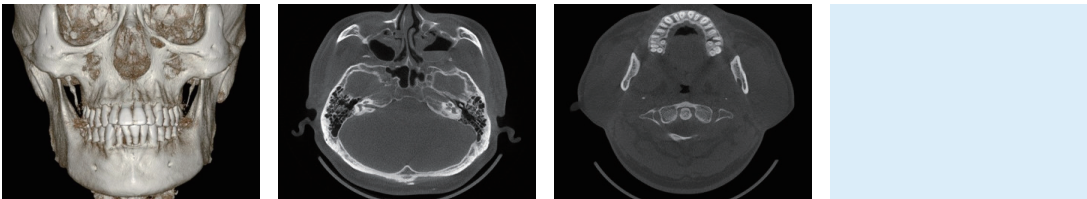
Large bore size with offset-detector geometry allows to scan various anatomical area including L-spine, Shoulder, Hip, etc.



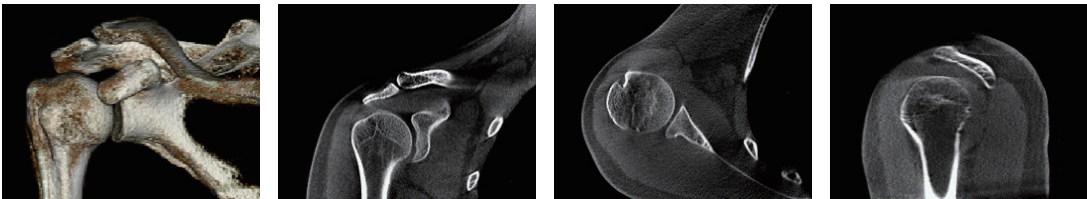
IMAGES

Mobile Cone-Beam CT for spine, Head & Neck, Extremity, Lung and Arthrography

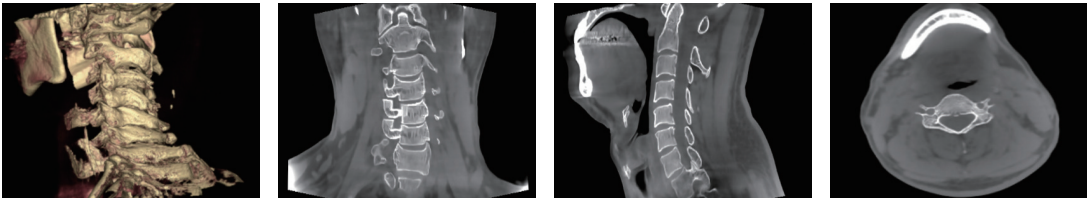
SKULL



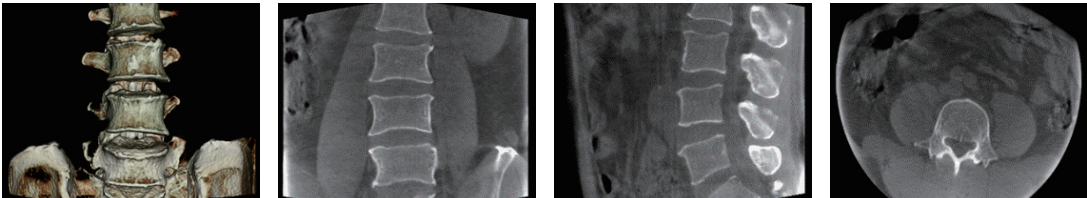
SHOULDER



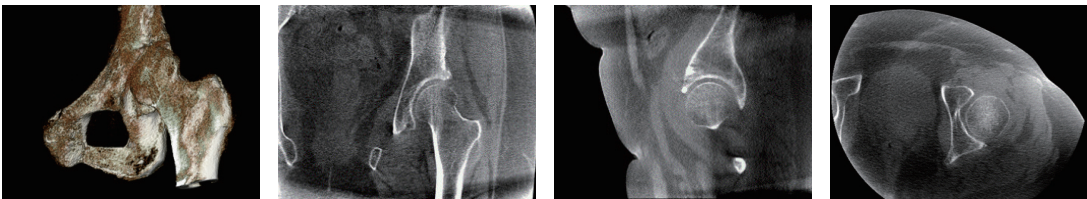
CERVICAL SPINE



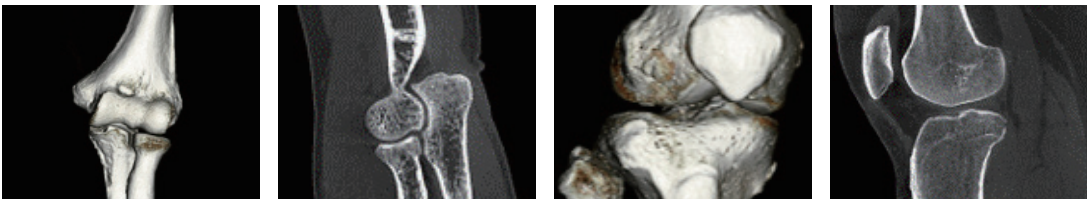
LUMBAR SPINE



HIP



EXTREMITIES



CT ARTHROGRAPHY

