

1800 / 2000 / 2400 / 2800 / 3200

G-FOLD

FOLDER-GLUERS



www.dgm-global.com

DGM CARTON
CONVERTING
EQUIPMENT

G-FOLD Folder-gluer

1800 / 2000 / 2400 / 2800 / 3200

AUTOMATIC TWO PIECES FOLDER-GLUER, WIRELESS REMOTE CONTROL

G-FOLD is a Two-Pieces Join Folder Gluer. It is suitable for large corrugated boxes. It is easy to set-up and friendly to operate. It can either process one or two pieces of carton. Equipped with independently motorized feeder, can feed two pieces of carton at same time and join them accurately thanks to a pneumatic lateral squaring device. The machine comes with two lower gluing wheels, left & right side, two upper electronic gluing systems, one for hotmelt application with one gun and the other one for cold glue with 3 guns.

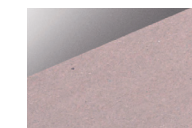


MODELS

G-FOLD
1800 / 2000 / 2400 / 2800 / 3200 AC

Without pre-folding section, suitable for straight-line boxes and crash-lock bottom boxes.

MATERIALS

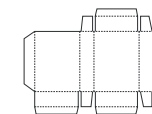


Carton board

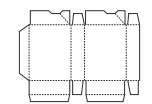


Corrugated board

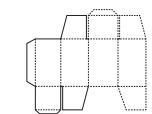
BOXES



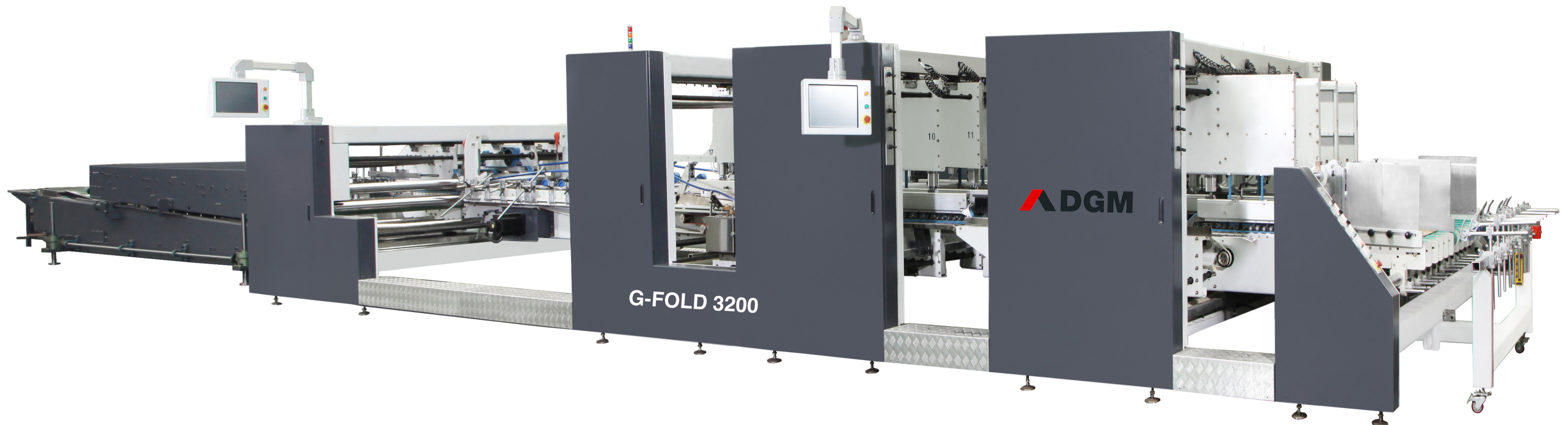
Straight line



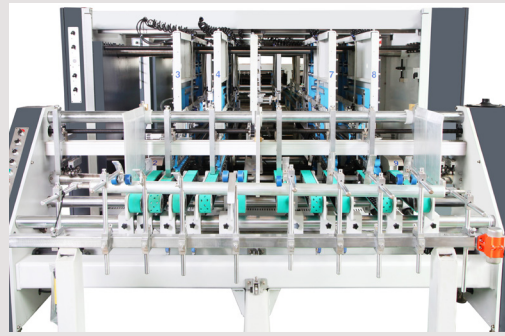
Lock - bottom box



Two pieces box



COMPONENTS FOR ALL MODELS



1

Feeder

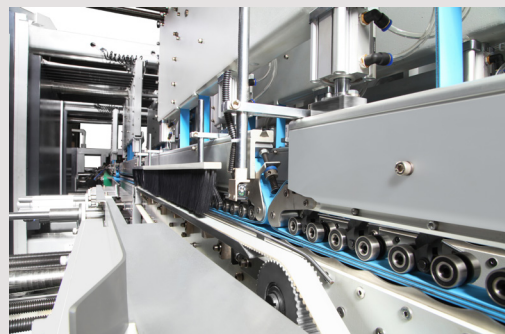
- Untimed Independent and motorized with 4/4/6/8/10 sponge feeding belts with 60mm width.
- Four lateral feed gates to adjust the width of each carton.
- 4 adjustable front feed knives, adjusting length due to each sample.
- Can feed one or two pieces into the lateral register (squaring device).



2

Two pieces assembly station

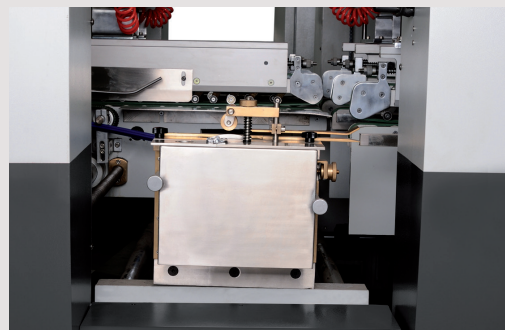
- Five big & two small guide plates (totally 7 pcs), each one big of them can adjust the distance via remote control, and the small guide plates at both sides with manual adjustment in order to keep in line with two piece of cartons.
- Pneumatic lateral squaring device in both sides to join two pieces after applying the glue.
- Two sets of 4 belts with 2 or 4 logs to maximize the production as per customer's needs.
- Upper electronic gluing system by hotmelt to join two pieces.
- Photocell sends a signal to squaring to activate the pneumatic cylinders that join the two boards.



3

Crash lock bottom section

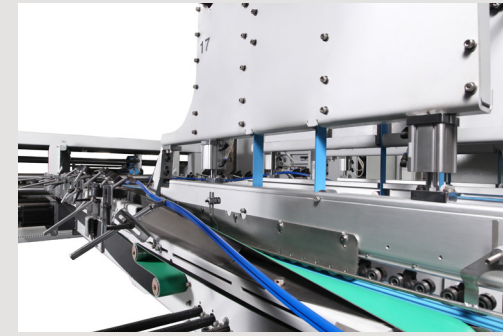
- 4 sets of folding fingers and accessories to fold the flaps and panels of boxes.



4

Gluing section

- Two lower gluing drums, left and right hand.
- Two upper electronic gluing systems allow to glue by hotmelt or cold glue, as per customer's needs.



5

Folding and closing section

- Equipped with bottom and outer belts, can fold 180° the 2nd and 4rd crease.
- Left & right guide wheels allow flexible adjustment of different positions to provide a perfectly smooth folding of the box during its closure.
- Outer belts speed can be adjustable by two servomotor left & right side.



6

Trombone section

- Upper & lower arms adjustable in length.
- Automatic belt tensioning adjusting system.
- Automatic box collecting mechanism to ensure boxes enter to the press section neat and well aligned to form the perfect shingle of the cartons on the collecting area.
- Electronic counter and pneumatic kicker for counting the number of batches.
- Squaring device for accurate closing of lock-bottom boxes.



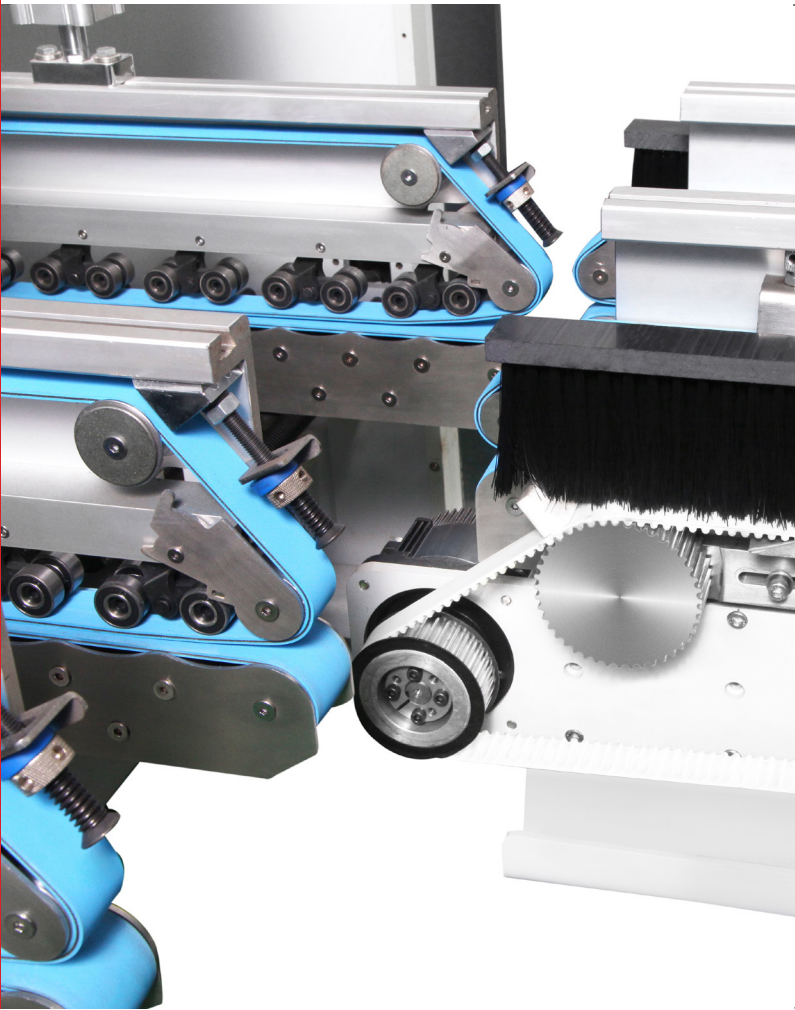
7

Press section (Delivery section)

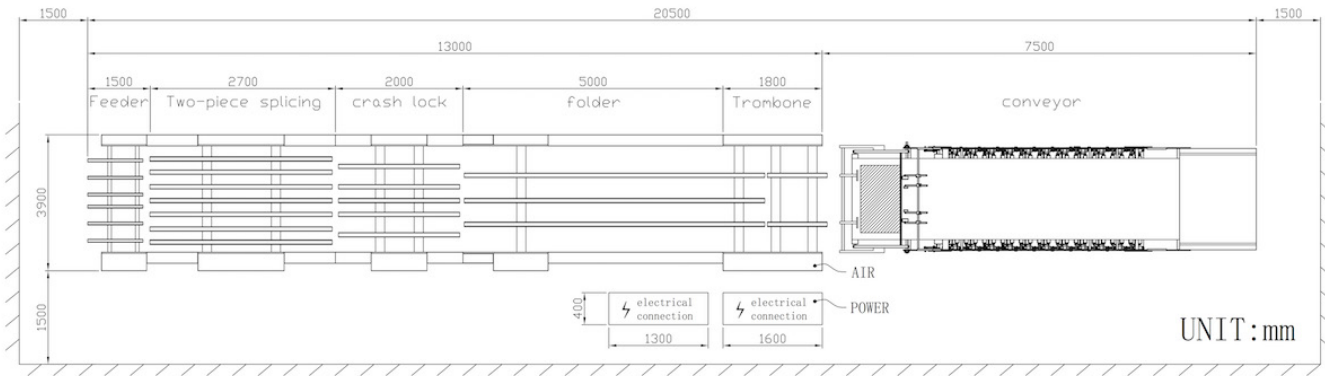
- Independent and motorized section allow to adjust speed on conveyor.
- Automatic mode (percentage of machine speed) manual mode (continuous operation).
- 6.5 m length press section with 4.7 m effective pressure length.
- Infeed mouth fully adjustable for stack delivery.
- Upper section moves back and forward, allowing for different box lengths.

G-FOLD

1800 / 2000 / 2400 / 2800 / 3200



SCHEME G-FOLD



SPECIFICATIONS

G-FOLD	1800	2000	2400	2800	3200
--------	------	------	------	------	------

Processed materials					
Carton board max.	1200 g/m²	1200 g/m²	1200 g/m²	1200 g/m²	1200 g/m²
Corrugated flute type	E, C, B, AB 3 & 5 layers	E, C, B, AB 3 & 5 layers	E, C, B, AB 3 & 5 layers	E, C, B, AB 3 & 5 layers	E, C, B, AB 3 & 5 layers
Capability					
Speed max.	200 m/min	200 m/min	200 m/min	200 m/min	200 m/min
Inching speed	20 m/min	20 m/min	20 m/min	20 m/min	20 m/min
Thickness of folded box max.	20 mm	20 mm	20 mm	20 mm	20 mm
Blank width (each piece)	550 - 950 mm	550 - 950 mm	550 - 1150 mm	550 - 1350 mm	550 - 1550 mm
Dimensions & weight	AC	AC	AC	AC	AC
Length	19 m	20.5 m	20.5 m	20.5 m	20.5 m
Width	2.65 m	2.8 m	3.1 m	3.5 m	3.9m
Height	1.8 m	1.95 m	1.95 m	1.95 m	1.95 m
Net Weight	11.5 Ton	11.5 Ton	13.5 Ton	14.5 Ton	15.5 Ton
Installation					
Electrical connected load	22.5 kW	22.5 kW	22.5 kW	22.5 kW	25 kW
Compressed air	6 bar	6 bar	6 bar	6 bar	6 bar
Air compressor capacity	15 m³/h	15 m³/h	30 m³/h	30 m³/h	30 m³/h
Air tank capacity	60 L	60 L	120 L	120 L	120 L

BOXES

1800	2000	2400	2800	3200
------	------	------	------	------

<div>Straight line</div>	A: 550 - 1800 mm B: 100 - 1300 mm	A:550-2000mm B: 100 - 1300 mm	A:550-2400mm B: 100 - 1300 mm	A:550-2800mm B: 100 - 1300 mm	A:550-3200mm B: 100 - 1300 mm
<div>Lock - bottom</div>	A: 650 - 1800 mm B: max. 1300 mm C: min. 120 mm D: 40 - 200 mm	A:650-2000mm B: max. 1300 mm C: min. 120 mm D: 40 - 200 mm	A:650-2400mm B: max. 1300 mm C: min. 120 mm D: 40 - 200 mm	A:650-2800mm B: max. 1300 mm C: min. 120 mm D: 40 - 200 mm	A:650-3200mm B: max. 1300 mm C: min. 120 mm D: 40 - 200 mm
<div>Two pieces</div>	A: min. 550 mm B:100 - 1300 mm	A: min. 550 mm B:100 - 1300 mm	A: min. 550 mm B:100 - 1300 mm	A: min. 550 mm B:100 - 1300 mm	A: min. 550 mm B:100 - 1300 mm

www.dgm-global.com

info@dgm-global.com

TEL (86) 0752-277 37 80
FAX (86) 0752-277 37 78

HuiHuan Industrial Area, Huizhou City,
Guangdong Province, China

Huizhou De Gang Machinery Co., Ltd

