

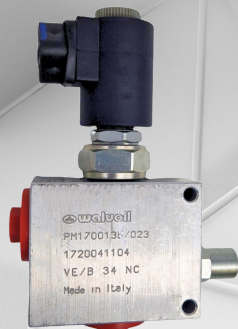
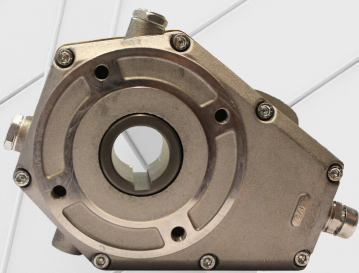
FLOWFIT®

SALES CATALOGUE

**BIG
SALE**

**FAST-MOVING
PRODUCTS**

BIG SAVINGS!



Stock levels are correct at the time of print.
Please be aware stock levels may differ
at time of purchase.

For full technical information on individual
products, please search



Click here to return to the
Table of Contents.



Tip:
Click on a product to access its product information
page.

**MANUFACTURERS AND SUPPLIERS
OF HYDRAULIC COMPONENTS**

FLOWFIT

DC POWER UNITS	2
HYDRAULIC MOTORS	3
IN-LINE VALVES	4-6
CETOP MANIFOLDS & VALVES	7-9
HYDRAULIC CYLINDERS	10
CLUTCHES & GEARBOXES	11
DIRECTIONAL CONTROL VALVES & SPARES ..	12-13
ELECTRIC MOTORS	14
TANKS & MOBILE UNITS	15-16
IKRON	18-21
GATES HOSE FITTINGS	22
HOSES	23
HANDPUMPS	24
GEAR PUMPS & SPARES	25-27
HOSE FITTINGS & ADAPTORS	28-29
PRESSURE GAUGES	30
QUICK RELEASE COUPLINGS	31
SOLENOID DIVERter VALVES.....	32
COMPRESSION FITTINGS	33
HYDRAULIC ACCESSORIES	34-36



DC POWER UNITS



Tip:
Click on a product to access its product information page.



Ensuring that you pick out the right hydraulic power unit for your system is essential for its optimum operation, reliability and to make certain that you are not damaging your components more than expected wear and tear will do. Flowfit ready-built single-acting circuit hydraulic power units are the component of your system which will pressurise the hydraulic liquid. Once it has been pressurised, this liquid will be the driving force behind attached motors, cylinders and every other powered component of your system.

24VDC SINGLE ACTING PUNIT



24VDC DOUBLE ACTING PUNIT 13L



3 METRE COILED CABLE + FLOWFIT HANDSET



Code	Description	Qty	Price	Was
ZZ016803	SINGLE ACTING PUNIT 24VDC 1.6K 1.1CC 1.5L TANK, 160BAR 3/8"	1	£157.50	£329.99

Code	Description	Qty	Price	Was
ZZ017402	DOUBLE ACTING PUNIT 24VDC 2KW 13L 160BAR C/W 2X CETOP 3	1	£315.00	£602.26

Code	Description	Qty	Price	Was
ZZ007475	COILED CABLE 3MTR + FLOWFIT HANDSET AND PLASTIC PLUG TO SUIT DOUBLE ACTING UNIT	613	£45.67	£68.98

WIRELESS CONTROL MODULE



COILED CABLE 3 METRE & FLOWFIT HANDSET



FLOWFIT DC DOUBLE ACTING WIRING LOOM



Code	Description	Qty	Price	Was
ZZ003473	WIRELESS CONTROL MODULE TO OPERATE A SINGLE ACTING POWER UNIT	11	£15.75	£28.99

Code	Description	Qty	Price	Was
ZZ015404-S	COILED CABLE 3 METRE & FLOWFIT HANDSET, NO CONTROL BOX	186	£10.00	£16.73

Code	Description	Qty	Price	Was
ZZ009181	FLOWFIT DC DOUBLE ACTING WIRING LOOM	379	£9.63	£19.98

FEMALE 7 PIN CONNECTOR SOCKET



UP100 VERTICAL TANK



UP100 2043 MANIFOLD



Code	Description	Qty	Price	Was
ZZ015405-S	DOUBLE ACTING PUNIT 24VDC 2KW 13L 160BAR C/W 2X CETOP 3	453	£2.86	£15.73

Code	Description	Qty	Price	Was
200.9724.9015.0	L120Q-01 12 LITRE UP100 VERTICAL TANK	21	£68.13	£68.98

Code	Description	Qty	Price
200.7644.0009.0	UP100 2043 MANIFOLD FOR SERIES CIRCUIT	18	£33.23 Was £58.76

HYDRAULIC MOTORS

Hydraulic motors are typically one of the largest components of a hydraulic system and making sure that you choose the right one is essential to ensure your hydraulic system is running efficiently. Designed to run hydraulic systems at different speeds and operate at different flow levels, the choice of which type of hydraulic motor to use can be crucial in regard to whatever job you may be undertaking – this is precisely why we have such an extensive range of hydraulic motors here at Flowfit.



VINKE HYDRAULIC MOTORS



Code	Description	Qty	Price	Was
VNK020901	50CC/REV, SAE 1" 6B SPLINED SHAFT, 1/2" BSP PORTS, 2 HOLE FLANGE SAE A	8	£104.50	£121.11
VNK020704	125CC/REV, 32MM PARALLEL SHAFT, 1/2" BSP PORTS, 2 HOLE FLANGE SAE A	1	£89.33	£126.13
VNK020304	160CC/REV, 32MM PARALLEL KEYED SHAFT, 4 BOLT FLANGE OMS STYLE	2	£147.10	£171.11
VNK020400	160CC/REV, 40MM PARALLEL KEYED SHAFT, 4 BOLT OMV STYLE	1	£202.02	£219.00
VNK020501	315CC/REV, 50MM PARALLEL KEYED SHAFT, 4 HOLE MOUNT OMV STYLE	1	£262.68	£290.55

Flowfit Hydraulic Motors



Code	Description	Qty	Price	Was
FFPMSA315KA	315,1CC/REV 31.75 1:8 TAPERED SHAFT STD 4 BOLT SAE A G 1/2"	7	£120.12	£160.00
FFPMS475C	475CC MOTOR, SHAFT 32MM, 4 HOLE FLANGE, G 1/2"	1	£157.50	£189.99
FFPRM80SHD-30MM	80.5CC 6 SPLINED 30MM DIN SHAFT 2BOLT BMR-80H1AIIY10/T7	3	£148.23	£178.16

M+S Hydraulic Motors



Code	Description	Qty	Price	Was
EPRME160COD	1" STRAIGHT KEYED SHAFT	1	£111.62	£189.49
EPRMF160CD	25MM STRAIGHT KEYED SHAFT	1	£198.39	£269.99
BEPRM250C	25MM STRAIGHT KEYED SHAFT	1	£225.00	£405.68
EPMSW125CRS-NPN	32MM SHAFT	1	£278.33	£395.68

Danfoss Light Duty Orbital Motor



Code	Description	Qty	Price	Was
WP155080A1710AAA	1" STRAIGHT SHAFT	32	£36.40	£171.14
WP155100A1710AAAA	1" STRAIGHT SHAFT	1	£38.22	£171.14
WP155125A1710AAAA	1" STRAIGHT SHAFT	3	£38.22	£171.14
WP155160A1710AAAA	1" STRAIGHT SHAFT	51	£36.40	£171.14

Take advantage of our sales and save BIG! We update our sales catalogue frequently so that you will not miss out on any deals.

To keep up with our updates, please subscribe to our newsletter!

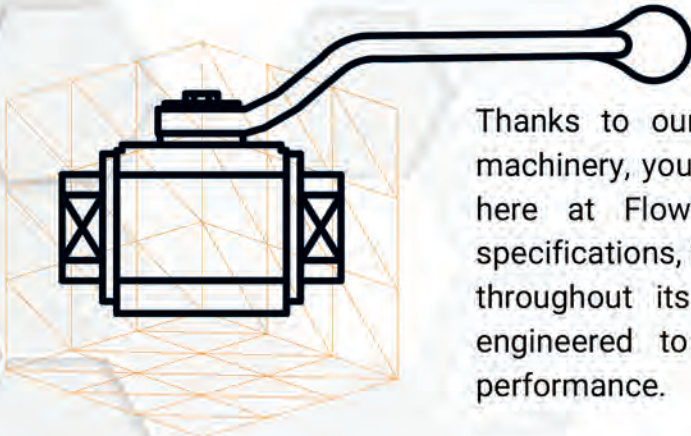
SUBSCRIBE

Click here to return to the Table of Contents





IN-LINE VALVES



Thanks to our diverse range of cartridge valves for hydraulic machinery, you will certainly find the perfect model for your needs here at Flowfit. We offer a variety of valves, of various specifications, to ensure that your system can maintain its integrity throughout its operation. Each one of our models has been engineered to provide an unbeatable lifetime of impeccable performance.

FLOW CONTROL VALVES



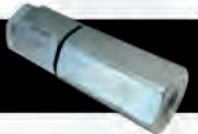
Code	Description	Qty	Price	Was
BFCVC04	1/4" BSP PARALLEL FEMALE THREADED FLOW CONTROL VALVE WITH CHECK	4	£19.58	£35.23
BFCVC08	1/2" BSP PARALLEL FEMALE THREADED FLOW CONTROL VALVE WITH CHECK	3	£24.43	£42.96

FLOW CONTROL VALVES



Code	Description	Qty	Price	Was
3FCVT08	1/2" BSP PARALLEL FEMALE, THREADED HYDRAULIC, 3 PORT EXCESS TO TANK, FLOW CONTROL VALVE	1	£85.53	£144.02

1/2" BSP Inline Sequence Valve



Code	Description	Qty	Price	Was
SVLCC0310	1/2" BSP INLINE SEQUENCE VALVE 50-140BAR 300BAR/100L MAX	2	£21.00	Was £48.62

1/2" INLINE FLOW CONTROL C/W CHECK



Code	Description	Qty	Price	Was
9204004	140L/MIN 350 BAR UNI-DIRECTIONAL	1	£16.27	£18.83

1/4" SHUTTLE VALVE



Code	Description	Qty	Price	Was
1323012100	1/4" BSP PORTS, 20 LPM, 500 BAR	1	£14.37	£21.98

DUAL CROSS LINE RELIEF VALVES



Code	Description	Qty	Price	Was
VMDI3503B3	1/2" BSP 35L/MIN	2	£15.75	£26.78
1140041102	3/4" DUAL CROSS-LINE RELIEF VALVE	1	£103.86	£180.56

CHECK VALVES



Code	Description	Qty	Price	Was
13111050100	1" BSP, 0.5 BAR (7.25 PSI)	1	£36.75	£60.77
V0630/1F2.3	VUSF 1" WITH 1 HOLE 2.3MM, FIXED THROTTLE CHECK	1	£21.49	£26.64
V0630/1F2.5	VUSF 1" WITH 1 HOLE 2.5MM, FIXED THROTTLE CHECK	1	£21.49	£26.64
88710	2" BSP CHECK VALVE	8	£80.45	£101.94

OLEWEB HOSE BURST VALVE



Code	Description	Qty	Price	Was
ZZ017887	3/8" BSP HOSE BURST VALVE, MALE/FEMALE C/W CART RIDGE	2	£5.78	Was £17.58

Click here to return to the Table of Contents



IN-LINE VALVES



PARALLEL FEMALE HOSE BURST VALVE



Code	Description	Qty	Price	Was
HBVF06	3/8" BSP PARALLEL FEMALE HOSE BURST VALVE	1	£10.70	£9.24

MALE/MALE CHECK VALVE



Code	Description	Qty	Price	Was
V0639/1-S	VU MM 2", 1 BAR, FLOW RATE 650 L/MIN, MAX PRESSURE 320 BAR, CRACKING PRESSURE 1 BAR	33	£37.93	£118.43

DELTA POWER PILOT OPERATED 1/4" 2WAY NORMALLY CLOSE POPPET VALVE



Code	Description	Qty	Price	Was
ZZ011163	24 VDC 2 WAY, 2 POSITION, NORMALLY OPEN, 1/4" BSP THREAD, 50L/MIN MAX FLOW	1	£55.04	£404.83

DELTA POWER PILOT OPERATED 1/2" 2WAY NORMALLY CLOSED POPPET VALVE



Code	Description	Qty	Price	Was
DES2B00HC24C2S	2 WAY NC POPPET STEEL BODY, 1/2"	1	£115.19	Was £155.19

WALVOIL 3/4" 2WAY NORMALLY CLOSED 24V POPPET VALVE



Code	Description	Qty	Price	Was
VEB34NC	VE/B 34/ NC 2-WAY NC G3/4 207 BAR 24V DC 75 LPM	1	£113.97	Was £202.56

VINCKE 1/2" 2WAY NORMALLY OPEN 24V POPPET VALVE



Code	Description	Qty	Price	Was
HOR57629	24VDC 2 PORT NORMALLY OPEN 1/2" BSP PORTS, 40L/MIN, 250 BAR	1	£138.60	Was £211.60

Bucher Manual Cartridge



Code	Description	Qty	Price	Was
200.7876.0178.0	Z817/22-TV N/C MANUAL CARTRIDGE UNLOADER VALVE 3/4" UNF-16 Ø12mm	4	£5.25	Was £14.98

3 WAY NORMALLY CLOSED VALVE



Code	Description	Qty	Price	Was
V1A04BW1	3-WAY NORMALLY CLOSED (NC) ELECTRICALLY-ACTUATED SINGLE SOLENOID PNEUMATIC DIRECTIONAL CONTROL VALVE	1	£21.00	Was £42.00

GGL 3/8" STAINLESS STEEL INLINE ROTATING COUPLING



Code	Description	Qty	Price	Was
GX1060	3/8" AISI 316 STAINLESS STEEL INLINE ROTATING COUPLING	1	£82.69	£103.14

Customer Service

Flowfit's customers are the lifeblood of the business and the entire structure of, and processes within, the business are designed to ensure they receive the very best customer service.

[Click here to return to the Table of Contents](#)



IN-LINE VALVES

GL STAINLESS STEEL CHECK VALVES



Code	Description	Qty	Price	Was
VU-G3/8Z-AISI316	3/8" BSP IN-LINE CHECK VALVE	2	£46.33	£50.00
VU-G1/4X-AISI316	1/4" BSP IN-LINE CHECK VALVE	1	£53.48	£107.06

SINGLE PILOT OPERATED CHECK VALVE



Code	Description	Qty	Price	Was
V0273-S	HIGH PILOT RATIO, VBL/3 SE 1/4", PILOT RATIO 1:8, MAX FLOW 20 L/MIN, MAX PRESSURE 350 BAR, CRACKING PRESSURE 4 BAR	48	£12.81	£109.44 £26.76



DOUBLE PILOT OPERATED CHECK VALVE W/ MANUAL SHUT OFF



Code	Description	Qty	Price
V0134/SX-S	3/8" PORT, PILOT RATIO 1:5,5 MAX FLOW 30 L/MIN, MAX PRESSURE 350 BAR, CRACKING PRESSURE 4 BAR	67	£18.60 £22.42

3/4" BSPP BRASS BALL VALVE



Code	Description	Qty	Price
BVL84W-34	3/4" BSPP BRASS BALL VALVE, NICKEL PLATED	10	£27.43 £33.42
BVL84W-38	3/8" BSPP BRASS BALL VALVE, NICKEL PLATED	7	£16.44 £29.98

We understand the importance of choosing the right components for your hydraulic system – quality is vital when choosing such vital parts. That is why we have carefully selected our range of cartridge valves and components to ensure that you are able to find a dependable solution for your individual needs.

We specialise in finding and providing the ideal solution for your hydraulic needs. All our products have their own specifications which make them ideal for a variety of systems, so be sure to read technical information to choose a model that is suitable for your system's operating temperature, cracking pressures and more.

O RINGS

Code	Description	Qty	Price
0025.0023 .00.00	O RINGS TO SUIT 7001.0101 (1/2" 4 WAY DIVERTER VALVE O/C MAX WORKING PRESSURE 350 BAR)	13	£0.10 £0.99

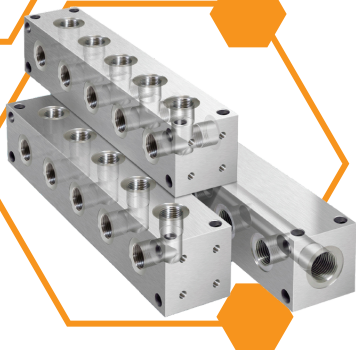


30 Day Guaranteed No Quibble Returns.
[Click here to learn more.](#)

[Click here to return to the Table of Contents](#)



CETOP MANIFOLDS & VALVES



Widely used in various industries, including manufacturing, automation, mobile equipment, and industrial machinery, where hydraulic systems are employed, CETOP manifolds and valves offer a reliable and efficient solution for managing hydraulic flow, control, and distribution within a hydraulic system. At Flowfit, we offer a diverse range of CETOP manifolds and valves to ensure you

Tapping Plates



Code	Description	Qty	Price	Was
CTP-AB-03	CETOP 3 A & B	3	£21.67	£27.89
TP-51AB	CETOP 5 A & B	2	£23.98	£52.59
TP-51PT	CETOP 5 P & T	1	£25.71	£59.99

Blanking Plates



Code	Description	Qty	Price	Was
CBP-05	CETOP 5, BLANKING PLATE	2	£7.53	£12.56

SUBPLATE FOR KOMPASS SOLENOID CONTROLLED RELIEF VALVE



Code	Description	Qty	Price	Was
BGM-03-04	SUBPLATE FOR BSG-03-H, KOMPASS SOLENOID CONTROLLED RELIEF VALVE	1	£50.00	Was £102.95

CETOP 3 SIDE ENTRY SUBPLATES



Code	Description	Qty	Price	Was
EB223	CETOP 3, PLATE, P TO A/B TO T	1	£23.59	£34.99
D-03-SP-S-12G	CETOP 3 SUBPLATE SIDE ENTRY 3/4" BSPP PORTED	5	£31.48	£52.99
BGM-03-04	SUBPLATE FOR BSG-03-H, KOMPASS SOLENOID CONTROLLED RELIEF VALVE	1	£50.00	£102.95
AP-531	CETOP 5 TO 3 ADAPTOR PLATE	1	£73.73	£148.99

KOMPASS SUBPLATES



Code	Description	Qty	Price	Was
CRG-03-A1	CETOP 3 3/8" BSP MOUNTING	6	£7.47	£16.79
DSGM-02-03-2B2S-BSPP	CETOP 3, 2 SIDE, 2 BOTTOM	47	£13.31	£32.56
DSGM-02-02-B4-BSPP	CETOP 3, BOTTOM ENTRY	4	£29.45	£56.78
06-3C3	CETOP 8, BOTTOM DECK ONLY	2	£105.00	£96.94

CETOP 8, SUBPLATE SIDE PORTS



Code	Description	Qty	Price	Was
CODIGOXXX PROV	CETOP 8, SUBPLATE SIDE PORTS, 1"1/4	5	£179.37	£235.87

Steel Manifolds



Code	Description	Qty	Price	Was
115161/2	CETOP 3 ADC 5 3EY/RX14/DC24N9K, ALL PORTS CLOSED, SPRING CENTRED, 24V DC	1	£67.87	£146.14
D-03P-6-G-S	CETOP 3, 6 STATION STEEL MANIFOLD, WITH RELIEF VALVE	1	£54.48	£102.59
D-03P-6-G	CETOP 3, 6 STATION STEEL MANIFOLD, NO RELIEF VALVE	3	£47.24	£299.75
D-03P-7-G-S	CETOP 3, 7 STATION STEEL MANIFOLD, WITH RELIEF VALVE	2	£62.99	£120.86
BLKESC00242	CETOP 3, 7 STATION MANIFOLD, LD NO RV ALUMINIUM	1	£176.15	£254.79
D-03P-8-G-S	CETOP 3, 8 STATION STEEL MANIFOLD WITH RELIEF VALVE	2	£71.68	£299.75
D-05P-1-G-S	CETOP 5, 1 STATION STEEL MANIFOLD, WITH RELIEF VALVE	6	£28.50	£117.69
D-05P-3-G-S MR5-3G	CETOP 5, 3 STATION, STEEL MANIFOLD, WITH RELIEF VALVE	8	£54.48	£102.59
D-05P-6-G	CETOP 5, THREE STATION MANIFOLD - SIDE ENTRY - WITHOUT RELIEF, 300 BAR MAX PRESSURE, 120 L/MIN MAX FLOW RATE	8	£106.55	£156.79
MD-MR5-5G	CETOP 5, 6 STATION, STEEL MANIFOLD, NO RELIEF VALVE	4	£97.72	£328.99
MD-05P-9-G-M32-S	CETOP 5, 5 STATION, STEEL MANIFOLD, NO RELIEF VALVE	14	£141.85	£234.17
MANO-8-1/2	CETOP 5, 9 STATION, M32X1.5, RELIEF VALVE	5	£207.81	£562.79
	8 STATION MANIFOLD ALL PORT 1/2" BSP FEMALE	1	£125.22	£211.99

Click here to return to the Table of Contents





CETOP MANIFOLDS & VALVES

VINCKE CETOP 3 A & B TO T RELIEF VALVE



Code	Description	Qty	Price
VNKLMO6008	70-250 BAR	6	£56.32 <i>Was £68.98</i>

EATON VICKERS SINGLE PILOT OPERATED CHECK VALVE



Code	Description	Qty	Price
870024	CETOP 3 SPOC ON A	1	£94.04 <i>Was £290.81</i>

2-POSITION SOLENOID OP D.C.V 2B2 SPOOL



Code	Description	Qty	Price
DHE-0631/2-X-00/DC	2-POSITION SOLENOID OP D.C.V 2B2 SPOOL	1	£84.00 <i>Was £213.49</i>

Kompass Cetop 5



Code	Description	Qty	Price	Was
DPHG-03-2B2	2B2-P TO A LINKED, T TO B LINKED BOTTOM DECK ONLY	4	£105.00	£249.80
DPHG-03-3C5	KOMPASS CETOP 5, 3C5- P TO A AND T LINKED, B BLOCKED, BOTTOM DECK ONLY	2	£105.00	£249.80
DPHG-03-3C3	KOMPASS CETOP 5, 3C3- ALL PORTS OPEN, BOTTOM DECK ONLY	2	£105.00	£249.80
DPHG-03-3C2	KOMPASS CETOP 5, 3C2- ALL PORTS BLOCKED, BOTTOM DECK ONLY	2	£105.00	£249.80
DPHG-03-3C4	KOMPASS CETOP 5, 3C4 - A AND B TO T LINKED, P BLOCKED, BOTTOM DECK ONLY	2	£105.00	£249.80

CETOP SOLENOID VALVE



Code	Description	Qty	Price
F5-02-2B29L-A1	CETOP 3 NG6 2 POSITION SOLENOID VALVE, 110 V AC 50HZ, 2B29L	3	£24.02 <i>Was £54.98</i>

ATOS CETOP 3 ALL PORTS BLOCKED PROPORTIONAL VALVE



Code	Description	Qty	Price
DHZE-A-071-S3	ATOS CETOP 3 ALL PORTS BLOCKED PROPORTIONAL VALVE, 30 LPM MAX FLOW, 270 BAR MAX PRESSURE	2	£467.75 <i>£598.98</i>

WANDFLUH VALVE CETOP 3 24VDC



Code	Description	Qty	Price
5200402	SOLENOID CETOP 3 24VDC - Z522061ABG24	2	£285.00 <i>£489.98</i>

CETOP 3 ALL PORT CONNECTED 12VDC WITH MANUAL LEVER



Code	Description	Qty	Price
VNKEV06067	CETOP 3 ALL PORT CONNECTED 12VDC WITH MANUAL LEVER	2	£52.50 <i>Was £199.98</i>

Click here to return to the Table of Contents



CETOP MANIFOLDS & VALVES



Kompass Double Solenoid



Code	Description	Qty	Price	Was
D4-03-3C2-A2	CETOP 5 3C2 SPOOL TYPE, VAC 220	1	£100.00	£179.99

CETOP 5 MODULAR COUNTER BALANCE



Code	Description	Qty	Price	Was
FFCS-03A-K-3-20	CETOP 5 MODULAR COUNTER BALANCE 70-250 BAR ON A LINE	3	£99.40	£179.98

KOMPASS CETOP 8 NG25



Code	Description	Qty	Price	Was
06-3C3	KOMPASS CETOP 8 NG25, 3C3 - ALL PORTS OPEN, BOTTOM DECK ONLY	2	£100.00	£306.34

RELIEF CARTRIDGE



Code	Description	Qty	Price	Was
CETOPRELIEF CARTT10A	T-10A CAVITY 35-210 BAR RATED 95LPM	10	£34.13	£54.99

SPRING WASHER CETOP 10 KIT



Code	Description	Qty	Price	Was
CETOP10 SPRING WASHER	SPRING WASHER KIT TO FIT CETOP 10	1	£10.46	£19.98

12V DC SPARE SOLENOID COIL, CETOP3



Code	Description	Qty	Price	Was
TIA-DA-12VDCCOIL-S	TO SUIT FLOWFIT DC D/ACTING POWERPACKS, COIL HOLE I/D: 23.2MM, COIL LENGTH: 50.7MM	143	£6.39	£20.82

DIN 43650 HERSCHMANN DC CONNECTOR



Code	Description	Qty	Price	Was
LEDPLUGDC	DC RATED WITH RED LED, 12V, 24V	764	£1.04	£4.99

DIN 43650 HERSCHMANN AC CONNECTOR



Code	Description	Qty	Price	Was
LEDPLUG	AC RATED WITH RED LED 110V AC, 240V AC	653	£1.04	£4.99

RELIEF VALVE



Code	Description	Qty	Price	Was
AC091VS802F	RELIEF VALVE CARTRIDGE TO SUIT CETOP 5 MANIFOLD VS80-2F	1	£32.21	£96.99

Click here to return to the Table of Contents





HYDRAULIC CYLINDERS

As the UK's leading provider of hydraulic system components and accessories, here at Flowfit we are proud to offer industry-leading Flowfit hydraulic cylinder/rams. These models are easy to integrate into your hydraulic system and are available in a wide range of sizes and specifications with even more available on request!

DOUBLE ACTING HYDRAULIC RAM



Code	Description	Qty	Price	Was
8015.0500	FRONT FLANGE THREADED ROD 70 BORE 40 ROD 500STK	1	£130.22	£502.26

HYDRAULIC D/ACTING STABILISER /JACK LEG CYLINDER



SINGLE ACTING HYDRAULIC RAM



DOUBLE ACTING CYLINDER/RAM



Code	Description	Qty	Price	Was
PH70100500-S	100BORE 70ROD 500STROKE C/W MOUNTING PLATE & SWIVEL FOOT	2	£503.89	£747.58

Code	Description	Qty	Price	Was
670/3-S	70ROD 300STROKE 495CLOSED DISPLACEMENT 670/3	1	£123.64	£313.37

Code	Description	Qty	Price
DE1001400500H07	140 X 100 X 500 X 870MM STROKE, DOUBLE ACTING HYDRAULIC RAM/CYLINDER RATED TO 200BAR	3	£550.00 £980.00

BELL HOUSINGS

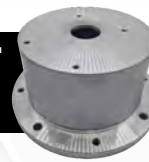


At Flowfit, we have a reputation as the UK's leading suppliers of hydraulic parts and spares. This includes our extensive range of **bell housings and drive couplings** which is full of products for both electric, petrol and diesel engines. Each has been manufactured to the highest possible standard to give quality, long term performance.

Bell Housing GX160/GX200Q



BELL HOUSING TO SUIT GROUP 3 PUMPS



Code	Description	Qty	Price	Was
BH4547+9640	PR 160/100/240/1 D71 FRAME TO SUIT HI-LO 2 BOLT 106.4 PUMP	1	£49.99	£105.67

Code	Description	Qty	Price	Was
BH4203	PRE300/144/25, BG132 (5,5-7,5KW) M8 D132 TO GP3 4 BOLT	1	£31.50	£65.60

[Click here to return to the Table of Contents](#)



CLUTCHES & GEARBOXES

We are proud to offer a wide and unbeatable range of clutches and gearboxes for a wide range of industrial and domestic hydraulics system applications. We know important the perfect mechanism are to an effective system, and we ensure that every one our designs has been rigorously tested to provide reliable, long-lasting service to our customers!

SPEED REDUCTION GEARBOXES



Code	Ratio	Qty	Price	Was
38-95001-2/30	1:2, GP2	1	£106.96	£184.17
39-96071-2-S	1:2, GP3	8	£130.46	£303.15
38-95001-4/1	1:3, GP2	4	£83.82	£187.56
38-95001-6/3	1:3,8, GP2	5	£167.25	£225.00

CAST IRON PTO GEARBOX, GRP 3



Code	Ratio	Qty	Price	Was
121-70012-7	1:3:8	2	£412.86	£844.17
121-70012-2.5	2.5:1	1	£412.86	£827.56

HYDRAULIC SERIES 8000 PTO GEARBOX



Code	Description	Qty	Price	Was
35-80001-4	HYDRAULIC SERIES 8000 PTO GEARBOX, MALE SHAFT, GROUP 3.5, RATIO 1:2.5 WITHOUT FLANGE	2	£394.05	£599.98

HYDRAULIC SERIES 6000 PTO GEARBOX



Code	Description	Qty	Price	Was
33-60001-1	HYDRAULIC SERIES 6000 PTO GEARBOX GROUP 2 MALE SHAFT RATIO 1:1.5	2	£152.61	£305.20

ELECTROMAGNETIC CLUTCH 24V



Code	Description	Qty	Price	Was
29-30911-S	HYDRAULIC ELECTROMAGNETIC CLUTCH 10 KGM/DANM 24VOLT FOR GROUP 3 PUMPS	11	£303.15	£332.62

SAE "C" Bolts w/ Socket Capscrews



Code	Description	Qty	Price	Was
28-30431	2 BOLT TO SUIT 30500 SERIES CLUTCHES	3	£45.31	£93.81
28-30432	4 BOLT TO SUIT 30500 SERIES CLUTCHES.	2	£45.10	£93.81

Ultra Flange Pump



Code	Description	Qty	Price	Was
28-30471	TO SUIT 30500 SERIES CLUTCHES	2	£42.04	£86.44

SAE "B" WITH SOCKET CAPSCREWS



Code	Description	Qty	Price	Was
28-30421	2 BOLT TO SUIT 30500 SERIES CLUTCHES	1	£44.79	£87.56
28-30422	4 BOLT TO SUIT 30500 SERIES CLUTCHES	2	£45.50	£89.95

SAE A FLANGE



Code	Description	Qty	Price	Was
96100	SAE A FLANGE FOR REDUCTION GEARBOX 96000 ONLY	1	£25.54	£56.40

SPRINTER PTO AND HYDRAULIC PUMP KIT



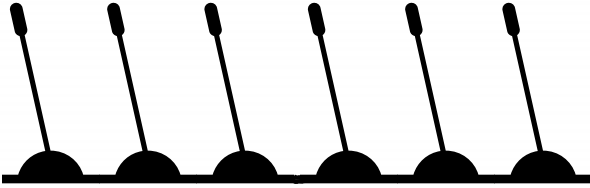
Code	Description	Qty	Price	Was
8015.0500	TO SUIT THE MERCEDES SPRINTER COMMON-RAIL DIRECT INJECTION AND EURO 5, 4 CYLINDER 2143 CC ENGINE. REAR WHEEL DRIVE. YEAR 2009 TO 2013.	1	£645.46	£933.58

Click here to return to the [Table of Contents](#)





DIRECTIONAL CONTROL VALVES



If you're looking for top-of-the-line Directional Control Valves for your hydraulic system, Flowfit has the perfect options for you – no matter your budget. Our selection is hand-picked to ensure quality, and features products from well-known global brands such as Bucher and Galtech, as well as components from our own Flowfit brand.



BUCHER DOUBLE ACTING SPRING RETURN LEVER OPERATED MONOBLOCK VALVE



Code	Description	Qty	Price	Was
200.0725.24.001-S	2 BANK, 3/4 BSP, 100 L/MIN	7	£518.17	£696.14

1 BANK 1" FLOWFIT LEVER VALVE



Code	Description	Qty	Price	Was
16010028	160L GM16/1/P(X-100)/18L/AET-P 1 BANK 1" FLOWFIT LEVER VALVE	6	£222.90	£275.05

This combination of renowned leading-edge technology and exceptional value allow us to offer a wide range of different valves including monoblock valves, slice valves and many more varieties, enabling you to maintain a secure, seamless operation on a range of systems.

Flowfit 1 Bank Slice Valve



Code	Description	Qty	Price	Was
24010008	250L/MIN D/ACTING SPRING RETURN. C/W HIGH PRESSURE CARRY OVER.	1	£382.61	£613.56

Flowfit 2 Bank Monoblock Valve



Code	Description	Qty	Price	Was
16020005	1" BSP, 160 L/MIN D/ACTING	4	£230.97	£355.54

[Click here to return to the Table of Contents](#)



DIRECTIONAL CONTROL VALVE SPARES



Should you require any technical data, you can find this on any of the individual product pages. Simply click on each page and you will find a download link for technical specs in a pdf format, as well as different options (regarding flow, pressure, etc).

Directional Control Valve Spares

No.	Code	Description	Qty	Price	Was
1	200.6682.9004.1	M8 HANDLEVER KNOB. SUITS ALL M8 HANDLEVERS.	7	£0.47	£4.99
2	200.6834.0059.0	M10 x 164MM TIE ROD	56	£1.05	£6.99
3	200.7050.0002.0	BUCHER BUSH FOR AP202 COUPLING.	12	£2.10	£9.99
4	200.7686.1063.0	BUCHER HDM12 POS 34-200768610630.	17	£5.25	£14.99
5	200.7070.3001.0	BUCHER HDS350 LEVER PIVOT BOX L110-300	30	£15.96	£24.99
6	200.7874.0096.0	BUCHER PORT RELIEF VALVE OA, 131-350 BAR - 200787400960	7	£73.83	£120.34
7	200.7412.2141.9	BUCHER EL11K204CE01EVCA00B00, 3/8" PORT. NO COILS, JUST TUBES.	2	£84.73	£176.07

NEW PRICE

BUCHER 24V DC COIL



Code	Description	Qty	Price	Was
200.5412.2001.0-S	BUCHER 24V DC COIL, EP77, EP78, TO SUIT HDS15, HDS20 HDS30	64	£10.00	£123.39

BUCHER EP77 12V DC 6023.0-S



Code	Description	Qty	Price	Was
200.9686.6023.0-S	BUCHER EP77 12V DC, TO SUIT HDM18 & HDS15	5	£120.99	£340.04

BUCHER EHI263 KIT



Code	Description	Qty	Price	Was
200.9686.6039.0-S	BUCHER EHI263 KIT, TO SUIT HDM25, HDS20 & HDS30	7	£181.27	£419.67



Tip: You can save your orders by creating a Flowfit account, online!

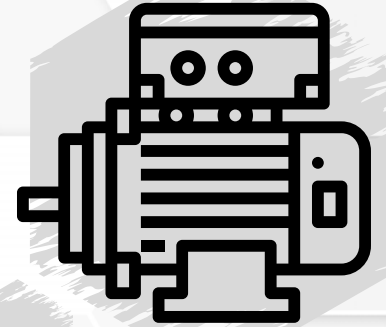
Click here to return to the Table of Contents





ELECTRIC MOTORS

If you're looking to run a hydraulics system, the use of an electric motor is an essential component. Required to drive a positive displacement hydraulic pump, very few hydraulic systems are actually able to operate without an attached motor. A good component to use is an electric motor which has the qualities to keep your hydraulics system running effectively to allow you to complete the job in hand.



Single Phase 110v Electric Motors



Code	Description	Qty	Price	Was
140138M006	MELEGARI 0.75KW 4 POLE 1500RPM, FACE & FOOT MOUNT 200MM DIA 19MM SHAFT D80	3	£52.50	£98.00

Three Phase 400V Electric Motors



Code	Description	Qty	Price	Was
0.5543TECAB35-71-200V50	0.55KW 200V 3PH 5-HZ 4PL B35	4	£300.23	£495.12
0.7563TECAB34-IE2	0.75KW 6 POLE 1000RPM WITH FACE & FOOT MOUNT IE2	1	£89.25	£145.40
1.523TECAB35-80-IE2	1.5KW 2 POLE 3000RPM 80 FRAME WITH FLANGE & FOOT MOUNT IE2	1	£80.65	£121.14
UCC_90L-4B34	1.5KW CAP/CAP 240V 1PH 50HZ	4	£123.53	£125.00
4.043TEEB35-IE3	4.0KW 415V 3PH 50HZ 4PL B35	2	£301.86	£218.70
5.543TECAB35-IE3-SIV	5.5KW 415V 3PH 50HZ 4PL B35 D132S 1460RPM ELECTRIC MOTOR	1	£334.19	£441.69
11.023TECAB35-IE2	11.0KW 2 POLE 3000RPM WITH FLANGE & FOOT MOUNT IE2	1	£379.80	£599.98
18.523TECCB35-IE3-S	THREE PHASE 400V ELECTRIC MOTOR, 18.5KW 2 POLE 3000RPM WITH FLANGE AND FOOT MOUNT IE3	1	£230.97	£95.60

How does an electric motor help in a positive displacement system?

A positive displacement pump is the generic name for a pump type that doesn't contain impellers, but rather relies on rotating or reciprocating parts to directly push the liquid into a closed volume. This continues until enough pressure is built up to allow the liquid to move into the discharge system.

DAMPING RODS



Code	Description	Qty	Price	Was
DSM160M	PAIR OF DAMPING RODS TO FIT 11KW MOTOR D160 FRAME B3 ELECTRIC MOTORS	1	£78.76	£140.56

[Click here to return to the Table of Contents](#)



TANKS



Hydraulic tanks, also known as reservoirs, are essential when it comes to keeping your hydraulic system supplied with fluid. Hydraulic tanks perform a range of incredibly important functions, including the dissipation of heat through its walls and conditioning the fluid itself to settle contaminants and improve the fluids quality.



H FRAME 45 LITRE TANK



Code	Description	Qty	Price	Was
HFRAME-SALE	H FRAME 45 LITRE TANK WITH ENGINE MOUNTS	1	£316.76	£633.51

55 LITRE TANK



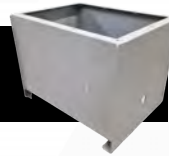
Code	Description	Qty	Price	Was
HF55HL-SALE	55 LITRE TANK MACHINED TO SPEC BLACK WITH FILLER BREATHER & RETURN FILTER HOLES - NEEDS FULL RESPRAY	1	£135.49	£246.59

70 LITRE STEEL TANK



Code	Description	Qty	Price	Was
FFT-70-S	FLOWFIT 70 LITRE HYDRAULIC STEEL TANK WITH LID AND SEAL (NBR70) FITTED 1/2	2	£251.51	£302.59

75 LITRE STEEL TANK, NO LID



Code	Description	Qty	Price	Was
HF75-SALE	HF SERIES 75 LITRE STEEL TANK MISSING LID, TWO EXTRA HOLES	1	£141.93	£165.91

100 LITRE STEEL TANK



Code	Description	Qty	Price	Was
FFT-100-S	FLOWFIT 100 LITRE HYDRAULIC STEEL TANK WITH LID AND SEAL (NBR70) FITTED 1/2" DRAIN PORT PLUGGED	3	£322.57	£347.69

100 LITRE STEEL OIL TANK



Code	Description	Qty	Price	Was
HBE1172	100 LITRE STEEL OIL TANK C/W INSPECTION COVER HOLE	5	£376.67	£742.59

160 LITRE STEEL PINK TANK



Code	Description	Qty	Price	Was
FFT-160-PINK	160 LITRE STEEL PINK TANK, 1/2" DRAIN, C/W GASKET & LID	1	£128.57	£257.14

160 LITRE STEEL BLUE TANK



Code	Description	Qty	Price	Was
FFT-160-BLUE	160 LITRE STEEL BLUE TANK, 1/2" DRAIN, C/W GASKET & LID	1	£128.57	£257.14

CARTRIDGE SCREWED-IN HEATER



Code	Description	Qty	Price	Was
TH1802/3-S	HEATER WITH TEMPERATURE ADJUSTMENT, 600 WATT, 400V, 400MM VOLTAGE, THREE-PHASE MAX	2	£658.31	£756.76

FLOATING LEVEL GAUGE



Code	Description	Qty	Price	Was
FLG400	FLOATING LEVEL GAUGE 400MM	11	£53.39	£100.51

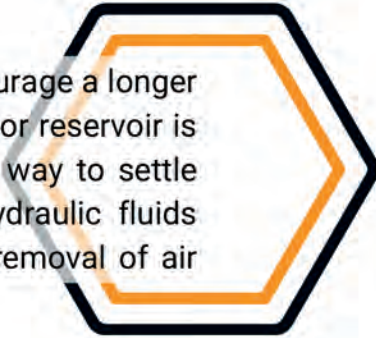
Click here to return to the [Table of Contents](#)





MOBILE UNITS

To encourage high-levels of system performance and to encourage a longer life-span for individual components, a suitable hydraulic tank or reservoir is required. Having a stored amount of the fluid is a fantastic way to settle sludge, water and other contaminants and enhance the hydraulic fluids suitability. They are particular useful when it comes to the removal of air which has been picked up by the hydraulic fluid.



ENGINE TROLLEY

Code	Description	Qty	Price	Was
ZZ002245	ENGINE TROLLEY C/W WHEELS & SPARE TOP PLATE	1	£428.57	£857.14



HYDRAULIC MOBILE UNIT

Code	Description	Qty	Price	Was
ZZ018047	FLOWFIT HYDRAULIC MOBILE UNIT C/W WHEELS & HANDLES 50 LITRE TANK	1	£600.00	£1200.00



[Click here to return to the Table of Contents](#)



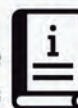


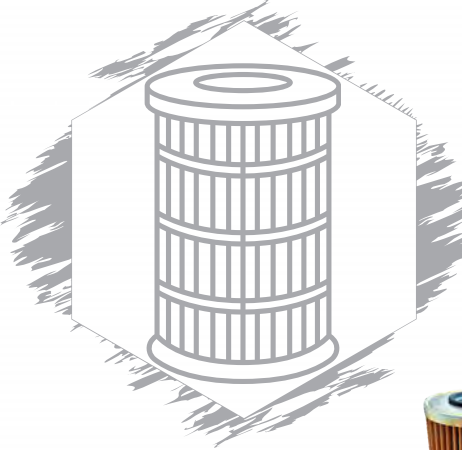
FLOWFIT®

Since 1996

From being experts in hydraulics sourcing in 1996, Flowfit is now a market leader in everything hydraulic, from distribution to systems and manufacturing. Simon Parsonage is the driving force behind a company which has come from humble beginnings. Flowfit's first office was an Old Miner's home in Cinderford, Gloucestershire, with one employee, Simon, working in the business with the support of his fellow investor, Anthony G. Cole. Within 6 months, Simon moved Flowfit's operations to a 400 square foot unit in Ludlow. By 2015, Flowfit's facilities had expanded to its current 28,500 square foot site, which comprises the head office, shop and warehouse facilities and, more importantly, 30 employees.

[Click here to return to the Table of Contents](#)





The correct choice of a filter and its optimum position in the hydraulic system requires the same care and experience needed to choose all the other components. The use of filters with larger filtering surfaces reduces, at equal flow rates, the superficial contaminant load and therefore the filter's life is extended proportionally. At Flowfit, we ensure you always get the quality filter you need for your hydraulic equipment.

REPLACEMENT ELEMENT FOR IKRON HF 502 TANK



Code	Description	Qty	Price	Was
HHC10521	REPLACEMENT ELEMENT FOR IKRON HF 502 TANK MOUNTED RETURN LINE FILTER, HEK 02-30.239-AS-RP010-VM-B17-B	1	£9.61	£44.44

HF554-40.194-AS-RP010-B17-GH-B-H-Z-XN-G-YN-K



Code	Description	Qty	Price	Was
HHA44160	IKRON HF554-40.194-AS-RP010-B17-GH-B-H-Z-XN-G-YN-K	1	£106.11	£221.73

HF 554 TANK TOP RETURN LINE FILTER



Code	Description	Qty	Price
HHD07000	IKRON HF554-20.077-GE-B-C-Z-XB-DB-G-YN-O-K TANK TOP RETURN LINE FILTER	1	£13.56 £73.38

HF570 TANK MOUNTED RETURN LINE FILTER



Code	Description	Qty	Price	Was
HHF20092	IKRON HF570 TANK MOUNTED RETURN LINE FILTERS HF570-20.300-AS-FG025-B17-GF-B-H-R-XA-GA-P-YN-D	1	£133.34	£394.66

Ikron HF570 Tank Mounted Return Line Filter



Code	Description	Qty	Price	Was
HHF26030	LENGTH: 310MM THREAD: 1-1/4" BSP FLOW RATE: 170L/MIN 25 MICRON	3	£103.86	£132.68

HF570 TANK MOUNTED RETURN LINE FILTER



Code	Description	Qty	Price	Was
HHF26030	IKRON HF 570 TANK MOUNTED RETURN LINE FILTER, HF570-30.190-AS-FG025-B08-GG-B-L-R-XA-GA-M-YN-D	3	£103.86	£429.87

HF595 RETURN LINE FILTER



Code	Description	Qty	Price	Was
HHL01720	IKRON HF595 RETURN LINE FILTER 1-1/4" BSP, 190 L/MIN	17	£62.73	£256.74

Ikron HF620 Replacement Element



Code	Description	Qty	Price	Was
HHC02920	LENGTH: 210MM MEDIA: 25 MICRON FIBRE GLASS	1	£30.70	£46.98

HF760 HEAD ONLY



Code	Description	Qty	Price	Was
HHP00237	IKRON HF760-40.B60.GF HEAD ONLY	1	£97.82	£407.80

Click here to return to the Table of Contents





HF 760 IN LINE HIGH PRESSURE FILTER



Code	Description	Qty	Price	Was
HHP03981	IKRON HF 760 IN LINE HIGH PRESSURE FILTER	1	£232.47	£260.56
HHP04151	IKRON HF 760 IN LINE HIGH PRESSURE FILTER, HF760-40.227-AS-FG010-LC-B60-GF-B-A-XA-H	2	£239.93	£260.83

IKRON, HHC01942 FILTER ELEMENT



Code	Description	Qty	Price	Was
HHC01942-	IKRON, HHC01942 FILTER ELEMENT	1	£52.65	£113.59

HHC01968 FILTER ELEMENT



Code	Description	Qty	Price	Was
HHC01968-	IKRON HHC01968 FILTER ELEMENT	1	£18.44	£80.09

HHC02011 FILTER ELEMENT



Code	Description	Qty	Price	Was
HHC02011-	IKRON HHC02011 FILTER ELEMENT	1	£25.35	£76.29

HHC02040 FILTER ELEMENT



Code	Description	Qty	Price	Was
HHC02040-	IKRON HHC02040 FILTER ELEMENT	20	£1.18	£9.29

IKRON HHC02707 SPIN ON HYDRAULIC FILTER ELEMENT



Code	Description	Qty	Price	Was
HHC02707-	IKRON HHC02707 SPIN ON HYDRAULIC FILTER ELEMENT	6	£14.61	£113.59

HHC03051 PRESSURE FILTER ELEMENT



Code	Description	Qty	Price	Was
HHC04685	IKRON ALUMINIUM HEAD ONLY TO SUIT HF502-20-GE RETURN FILTER	1	£4.66	£18.49

HHC03051 PRESSURE FILTER ELEMENT



Code	Description	Qty	Price	Was
HHC03053	IKRON HHC03053 PRESSURE FILTER ELEMENT	1	£11.29	£35.99

HHC03051 PRESSURE FILTER ELEMENT



Code	Description	Qty	Price	Was
HHC03051-	IKRON, HHC03051 PRESSURE FILTER ELEMENT	3	£7.85	£37.94

HHE13054 SUCTION FILTER C/W INDICATOR



Code	Description	Qty	Price	Was
HHE13054	IKRON HHE13054 3/4" 30 L/MIN 60 MICRON SUCTION FILTER C/W INDICATOR	1	£26.22	£52.59

HHF20060 1" BSP TANK TOP MOUNTED RETURN LINE FILTERS



Code	Description	Qty	Price	Was
HHF20060	IKRON HHF20060 1" BSP 90 L/MIN TANK TOP MOUNTED RETURN LINE FILTERS	1	£72.96	£279.71

IKRON FILTER ELEMENT, 10 MICRON, CELLULOSE



Code	Description	Qty	Price	Was
HHC01301-	FILTER ELEMENT, 10 MICRON, CELLULOSE	3	£14.95	£44.85

Click here to return to the [Table of Contents](#)





3/4" BSP TANK TOP RETURN LINE FILTER



Code	Description	Qty	Price	Was
HHD04310	IKRON 3/4" BSP 40 L/MIN 10 MICRON TANK TOP RETURN LINE FILTER	1	£30.54	£129.69

TANK MOUNTED RETURN LINE FILTER



Code	Description	Qty	Price	Was
HHD02663	IKRON TANK MOUNTED RETURN LINE FILTER HF554-10.129-AS-SP010-B17-GE-B-S-Z-XN-G-YN-O-K	1	£20.82	£82.54

IKRON SEAL KIT FOR HF 502-30



Code	Description	Qty	Price	Was
HHK00520	IKRON SEAL KIT FOR HF 502-30	3	£1.60	£8.04

IKRON SEAL KIT FOR HF 502-20



Code	Description	Qty	Price	Was
HHK00510	IKRON SEAL KIT FOR HF 502-20	1	£1.36	£6.05

IKRON SPARE BASKET TO SUIT FILLER BREATHER



Code	Description	Qty	Price	Was
HHC06490	IKRON SPARE BASKET TO SUIT FILLER BREATHER HHT02380, HHT02239, HHT02240 AND HHT02340	4	£0.65	£4.76

BLACK PLASTIC FILTER BOWLS



Code	Description	Qty	Price	Was
HHC06349	IKRON BLACK PLASTIC FILTER BOWL TO SUIT HF547-20.201	4	£2.56	£7.56
HHC06350	IKRON BLACK PLASTIC FILTER BOWL TO SUIT HF547-20.280	13	£2.56	£14.04

VISUAL RETURN INDICATOR



Code	Description	Qty	Price	Was
HHI03002	IKRON VISUAL RETURN INDICATOR HI25-I06-B17-GB-B	17	£2.56	£10.50

10 BAR, REAR PRESSURE GAUGE



Code	Description	Qty	Price	Was
HHM02536	IKRON HI12-N-GB-10, 10 BAR, REAR PRESSURE GAUGE	2	£3.20	£16.17
HHL01720	IKRON HI12-N-GB-10, 10 BAR, REAR PRESSURE GAUGE	17	£3.20	£16.17

Click here to return to the Table of Contents





ELECTRIC RETURN INDICATOR



Code	Description	Qty	Price	Was
HHI03014	IKRON ELECTRIC RETURN INDICATOR S, HI25-I07-B17-GA-B	6	£10.16	£44.85

SUCTION LINE ELECTRIC INDICATOR



Code	Description	Qty	Price	Was
HHI03051	IKRON SUCTION LINE ELECTRIC INDICATOR, 0.2/1 BAR, HI25-V02-B02-GA-B	1	£11.65	£48.24

ELECTRIC SUCTION LINE INDICATOR



Code	Description	Qty	Price	Was
HHI03050	IKRON ELECTRIC SUCTION LINE INDICATOR, 0.2/1 BAR, HI25-V02-B02-GB-B	2	£9.59	£47.53

VISUAL INDICATOR V



Code	Description	Qty	Price	Was
HHI03014	IKRON VISUAL INDICATOR V, HI25-V01-B02-GA-B, SUCTION SPIN ON FILTERS	6	£8.29	£43.56

NON PRESSURISED BREATHERS



Code	Description	Qty	Price	Was
HHT02111	IKRON NON PRESSURISED BREATHER, WITH CHAIN, 3 HOLE, 10 MICRON HB50-A-8-L-2-05-H-2-R	100	£7.94	£29.27
HHT02120	IKRON NON PRESSURISED BREATHER, 3 HOLE, 40 MICRON HB50-B-8-L-1-05-H-1-R	3	£8.07	£26.29

IKRON 1/4" 10 MICRON AIR BREATHER



Code	Description	Qty	Price	Was
HHS02109-	IKRON 1/4" 10 MICRON AIR BREATHER AF105-10GB-SP010-P1	1	£3.78	£17.07

BULB DIFFERENTIAL INDICATOR (1.5 BAR)



Code	Description	Qty	Price	Was
HHI01901	IKRON BULB VISUAL DIFFERENTIAL INDICATOR 1.5 BAR	1	£35.88	£51.04

PRESSURE VISUAL DIFFERENTIAL INDICATOR



Code	Description	Qty	Price	Was
HHI01901	IKRON PRESSURE VISUAL DIFFERENTIAL INDICATOR 5/25 BAR	1	£36.75	£112.54

Click here to return to the Table of Contents





GATES HOSE FITTINGS



ORDER TODAY!

Code	Description	Qty	Price	Was
10G10MJ	GATES HOSE FITTINGS 7103-13627-5	6	£4.61	£8.45
10G10FBSPORX	GATES HOSE FITTINGS 7100-19944-5	17	£5.19	£8.99
10G10FJX45S-024	GATES HOSE FITTINGS 7103-4634-5	52	£5.57	£9.05
10G10MBSPP	GATES HOSE FITTINGS 7100-19962-5	43	£7.82	£12.98
10G10FJX90-036	GATES HOSE FITTINGS 7103-4767-5	3	£8.39	£13.45
10G10FBSPORX90	GATES HOSE FITTINGS 7100-19946-5	8	£9.80	£15.00
10G10FJX90L	GATES HOSE FITTINGS 7103-4738-5	3	£13.86	£19.20
10G12FBSPORX90	GATES HOSE FITTINGS 7100-19950-5	94	£10.80	£16.24
10G15FDLORX	GATES HOSE FITTINGS 7100-19471-5	5	£7.64	£12.45
10G20FDHORX	GATES HOSE FITTINGS 7100-19956-5	4	£6.31	£9.50
10G20FDHORX90	GATES HOSE FITTINGS 7100-19958-5	7	£12.89	£18.50
10G20FDHORX45	GATES HOSE FITTINGS 7100-19957-5	18	£14.22	£19.35
12GS12FBSORX45	GATES 12GS12FBSORX45 7347-19400-5 3/4 X 3/4 45 DEG FEMALE	1	£7.14	£11.10
12G12FJX90M	GATES HOSE FITTINGS 7103-4745-5	36	£10.22	£15.50
16G16FJX	GATES HOSE FITTINGS 7103-0839-5	4	£10.33	£15.54
12G12FBSPORX45	GATES HOSE FITTINGS 7100-19679-5	7	£11.00	£17.00
12G12FBSPORX90	GATES HOSE FITTINGS 7100-19680-5	13	£11.63	£17.98
12G12FJX45S	GATES HOSE FITTINGS 7103-4642-5	1	£17.18	£21.22
12G22FDLORX90	GATES HOSE FITTINGS 7100-19675-5	14	£13.48	£19.00
12G25FDHORX45	GATES HOSE FITTINGS 7100-19672-5	10	£20.54	£24.98
16G16FBSPORX45	GATES HOSE FITTINGS 7100-19153-5	17	£16.50	£20.24
16G16FBSPORX90	GATES HOSE FITTINGS 7100-19163-5	18	£17.25	£21.50
16G16FJX45S	GATES HOSE FITTINGS 7103-4650-5	1	£17.55	£21.99
16G16FL	GATES HOSE FITTINGS 7103-12530-5	18	£18.81	£23.12
16G16FBSPORX90BL	GATES HOSE FITTINGS 7100-19258-5	9	£20.74	£24.98
16G16FL45S	GATES HOSE FITTINGS 7103-12739-5	10	£22.55	£29.98

Click here to return to the
Table of Contents



www.flowfitonline.com

Phone: +44 (0)1584 876 033

Email: sales@flowfitonline.com

22



FLOWFIT MANUAL HOSE COILER

Code	Description	Qty	Price	Was
FFHC125-S	MANUAL HOSE COILER, INCLUDING HIGH-QUALITY BRAKING WHEELS	3	£899.99	£1444.96



CETOP MANIFOLDS

OLEORAMA HYDRAULIC PARALLEL SCHEME MANIFOLDS



Code	Description	Qty	Price	Was
CMS0170-ED-02-OL-S	2 STATION, 1" BSP INLET PORTS 3/4" SERVICE PORTS	6	£82.39	£158.82
CMS0170-ED-06-OL-S	6 STATION, 1" BSP INLET PORTS 3/4" SERVICE PORTS	6	£226.74	£436.82

Click here to return to the
Table of Contents



HANDPUMPS

If you're looking for reliable and proven hydraulic pumps to operate by hand, then you need to look no further than the Flowfit hydraulic handpumps that we are proud to offer. Each and every one of our hand pump accessories has been designed to offer an easy and effective service, and to match the specifications of your system.

Hydraulic handpumps are used to convert physical energy into hydraulic pressure. These can be extremely useful when you're flushing a system for maintenance, or your main hydraulic pump is out of commission. They are also most useful when used as portable solutions to your hydraulic systems problems, due to their manoeuvrability around the system itself.



HANDPUMPS

Code	Description	Qty	Price	Was
HPT12VSSRP	12CC DOUBLE ACTION HANDPUMP WITH SPIRAL ROLE PIN FOR SINGLE ACTING CYLINDER	11	£45.02	£89.99
6057.0046	PMD45 45CC DOUBLE ACTING HANDPUMP BY B-S 4/3 CLOSED CENTRE VALVE C/W P-T RELIEF VALVE	2	£78.75	£139.98
06003440	CASAPPA EP 45 HANDPUMP, 45CC SHUT OFF+SUPPORT EP45S/TOA	1	£99.00	£299.99

HANDPUMP ACCESSORIES

Code	Description	Qty	Price	Was
3000.0006	PRESSURE RELIEF VALVE KIT FOR PM, PMD, PMP20, PM050/70, PM2V5-80 HV	6	£4.20	£8.00
6500.0141	2 LITRE BLACK STEEL HANDPUMP TANK HV	10	£27.30	£45.00
6500.0143	5 LITRE BLACK STEEL HANDPUMP TANK HV	1	£47.25	£90.00
06004500	TOA SUPPORT FOR HANDPUMP CASAPPA	8	£23.10	£35.00
PROB	RELEASE VALVE FOR CHAPEL SINGLE ACTING HAND PUMPS	1	£27.30	£52.00
06004050	EP12 S NO PRV SHUT OFF VALVE CASAPPA	1	£84.00	£150.00
HPBSE2.5EP	GL SINGLE STROKE FOR SINGLE ACTING CYLINDER WITHOUT RELEASE HAND KNOB WITH ACTIONING LEVER	1	£84.09	£161.72

DON'T MISS OUT!



Click here to return to the
Table of Contents



www.flowfitonline.com

Phone: +44 (0)1584 876 033

Email: sales@flowfitonline.com

24

GEAR PUMPS



Here at Flowfit, we can provide a diverse, great-quality range of hydraulic pumps and hydraulic gear pumps for use in a range of settings and situations. Our variety of high-powered models is suitable for industrial, commercial and domestic situations. Whatever the specifications of your hydraulic system, we can provide a reliable pump model to ensure that it operates as efficiently as possible.

Group 0.5 Power Pack Pump



Code	Description	Qty	Price	Was
GP-F100.19-CW	DISPLACEMENT: 0.19CC MAX PRESSURE: P1 - 200, P2 - 230, P3 - 250 CLOCKWISE	17	£34.16	£70.00

Group 1 Gear Pumps



Code	Description	Qty	Price	Was
CBK2.1-CW	2.1CC PUMP TO SUIT DC S/A-D/A POWER UNIT, CLOCKWISE	35	£28.63	£15.73
1GP10010290	5 CC/REV 32Ø 2BOLT TANG DRIVE SHAFT BSP PORTS	6	£52.51	£104.65
1GP10010320	6.3 C/WISE EURO 4BOLT SAE AA 9-TH SPLINE SHAFT ELBOW PORTS	10	£52.51	£104.65
BKP1Q0S8.0G0L1B	8 CC, C/WISE MINI POWERUNIT GEAR PUMP	1	£122.60	£150.00

Group 2 Gear Pumps



Code	Description	Qty	Price	Was
2SPA040SSAEA130N	4CC A/CLOCK SAE A 2BOLT 9-TH SPLINE SHAFT ELBOW PORTS	6	£71.41	£127.27
1GM20010043	ANTI-CLOCKWISE 6CC, 4 BOLT, 1/8 TAPER, BSP PORTED	30	£85.00	£162.00
2SPA080SSAEA130N	8CC A/CLOCK SAE A 2BOLT 9-TH SPLINE SHAFT ELBOW PORTS	4	£92.03	£127.27
200.7483.3070.0	AP200/8,5 D.811 PUMP/MOTOR	1	£88.13	£140.10
1GP20012018	11CC C/WISE EURO 4BOLT 15MM SHAFT ELBOW PORTS	8	£63.01	£141.29
2SPA110DB50CYBN110T	11CC C/WISE B50CY 2BOLT 1/5 TAPER SHAFT 40/35 PORTS	1	£63.01	£146.20
2SPA110DB50CX150T	11CC C/WISE B50CX 2BOLT 9-TH DIN SPLINE SHAFT 40/35	6	£202.84	£260.60
1GM20010126	16CC, 4 BOLT FLANGE, 1:8 TAPER SHAFT, REVERSIBLE	9	£105.00	£187.50
1GM20010142	16CC, 4 BOLT FLANGE, 1:8 TAPER SHAFT, REVERSIBLE	16	£105.00	£140.50
1GM20010223	16.5CC, 4 BOLT, 1/8 TAPER, BSP PORTED, REVERSIBLE(WITH EXTERNAL DRAIN)	19	£105.00	£187.72
1GM20011319	19.5CC, ANTI-CLOCKWISE, 4 BOLT, 1/8 TAPER, BSP PORTED	1	£105.00	£151.92
1GM20011319	19.5CC, ANTI-CLOCKWISE, 4 BOLT, 1/8 TAPER, BSP PORTED	1	£105.00	£151.92
1GM20011491	26CC, 4 BOLT FLANGE, BSP PORT PORTS, 1:8 TAPER SHAFT, REVERSIBLE	1	£105.00	£187.73
HCP21530251221	GEAR PUMP P2 CBN 3025 HL 10 C04N C5078488	1	£375.00	£750.00

Click here to return to the
Table of Contents

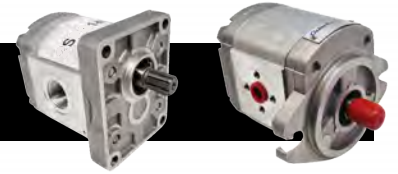




GEAR PUMPS

As a team of hydraulic specialists, we can offer a range of pumps of different specifications and dimensions to ensure that we can provide the perfect gear pump for your system's requirements.

Group 2 Gear Pumps (Continued)



Code	Description	Qty	Price	Was
2SPA040SSAE130N	4CC, 2 BOLT SAE FLANGE, ELBOW PORTS, 5/8" PARALLEL SHAFT, ANTI-CLOCKWISE	6	£80.00	£145.06
VNKB0202003NB-S	10CC, ANTI-CLOCKWISE 1/2" INLET & 3/8" OUTLET BSP PORTS, 4 BOLT EU FLANGE	1	£84.36	£56.60
2SPA14D14G	14CC, CLOCKWISE, 3/4" BSP INLET, & OUTLET, EU 4BOLT 9T SPLINED SHAFT	1	£80.00	£145.06
VNKB0202003NB-S	22CC, 4 BOLT, 1/8 TAPER, BSP PORTED, ANTI-CLOCKWISE	1	£80.00	£162.67

GALTECH GROUP 2 GEAR PUMPS



Code	Description	Qty	Price	Was
1GP20010075	6.0CC, CLOCKWISE, 1/2" BSP INLET, & OUTLET, EU 4BOLT 1/8 TAPER	51	£80.00	£145.07
2SPA110DB50	11CC, 2 BOLT THRO' 50Ø FLANGE, 40/35 ELBOW PORTS, 1/5 TAPER	1	£85.00	£153.54
CYBN110T	DRIVE SHAFT, CLOCKWISE			
2SPA260SSAE	26CC, 3/4" BSP INLET, & 1/2" BSP OUTLET, SAE 2BOLT 9TH SPLINE, ANTI-CLOCKWISE	1	£105.00	£196.10
ABN140G				
3GPG340DSAE	33.8CC, CLOCKWISE, 51MM INLET & 40MM OUTLET FLANGED	1	£175.00	£346.19
BBN140N	PORTS, SAE 2BOLT 13TOOTH			
2SPA040SEUR	4CC, 1/2 BSP INLET, & OUTLET, EU 4BOLT 9T SPLINED SHAFT, ANTI-CLOCKWISE	2	£85.00	£145.06
BN140G				
2SPA060DEUR	6CC, 1/2 BSP INLET, & OUTLET, EU 4BOLT TAPERED 1:5 SHAFT, CLOCKWISE	4	£85.00	£145.06
BN110G				

ANTI-CLOCKWISE 6CC GROUP 2 GEAR MOTOR



Code	Description	Qty	Price	Was
1GM20010043	ANTI-CLOCKWISE 6CC, 4 BOLT, 1/8 TAPER, BSP PORTED	30	£85.00	£162.95

Group 3 Cast Iron Gear Pump



Code	Description	Qty	Price	Was
3GPG340DSAE	BBN140N 33.8CC, CLOCKWISE, 51MM INLET & 40MM OUTLET FLANGED PORTS, SAE 2BOLT 13TOOTH	1	£175.00	£346.19
1GP30011055	65CC/REV CLOCKWISE SAE 13 TOOTH SHAFT	1	£270.00	£266.13

25CC MANIFOLD PUMP



Code	Description	Qty	Price
VNKBMF020112	FLANGED PORTS, 200 WORKING PRESSURE, 3000 R/MIN MAX SPEED, SUITABLE FOR TANDEM	1	£35.00 £98.66

MARZOCCHI BI DIRECTIONAL EQUIVALENT PUMP



Code	Description	Qty	Price
VNK1R0.5B7R1.00G0	MARZOCCHI BI DIRECTIONAL EQUIVALENT PUMP U05R050-KXG	1	£54.60 £91.02

Click here to return to the Table of Contents





GALTECH GR2 + GR2 TANDEM KIT



Code	Description	Qty	Price
5GKTC2200	GALTECH GR2 + GR2 TANDEM KIT SUIT 2SP GEAR SHORT SERIES	15	£28.81 £60.06

GROUP 3 + GROUP 1 TANDEM KIT



Code	Description	Qty	Price
5GKTS3100	GROUP 3 + GROUP 1 TANDEM KIT TO SUIT 3SP/1SP GALTECH GEAR PUMPS	28	£30.00 £90.72

GALTECH DRIVE GEAR



Code	Description	Qty	Price
5GKI300005-S	GRP 3, 44.0CC, TYPE 10, 1/8 SHAFT	35	£35.56 £102.86

STRAIGHT PUMP ADAPTOR



Code	Description	Qty	Price
TO-020001	STRAIGHT PUMP ADAPTOR 30MM PCD 3/8" BSP	4	£10.00 £21.38

Every one of our own hydraulic pumps has been designed from scratch to provide the very best service and ensure consistent reliability throughout your system's lifetime. However, we are also able to offer a range of hydraulic gear pumps from other manufacturers too. In keeping with our commitment to high-quality, we ensure that every product that we supply has undergone extensive testing.

Click here to return to the
Table of Contents





HOSE, FITTINGS & ADAPTORS

HOSE FITTINGS STRAIGHT



Code	Description	Qty	Price	Was
BM0608CF	3/8" BSP MALE 60° CONE X HOSE TAIL 1/2" HOSE ID	4	£0.98	£2.98
BM1212CF	3/4" BSP MALE 60° CONE X HOSE TAIL 3/4" HOSE ID	1	£1.30	£4.98
HMFL04-M14CF	M14 X 1.5 METRIC FEMALE LIGHT DUTY STRAIGHT	5	£0.58	£1.27

HOSE FITTINGS 90°



Code	Description	Qty	Price	Was
BF029004CF	1/8" BSP FEMALE 60° CONE X HOSE TAIL 1/4" HOSE ID	12	£1.42	£2.60
BF069008CF	3/8" BSP FEMALE 60° CONE X HOSE TAIL 1/2" HOSE ID	2	£1.19	£2.40
BF109008CF	5/8" BSP FEMALE 60° CONE X HOSE TAIL 1/2" HOSE ID	17	£1.90	£4.92
BF1690C16CF	1" BSP PARALLEL FEMALE, 60° CONE X HOSE TAIL, 90° COMPACT ELBOW	2	£4.50	£21.55

[Click here to return to the Table of Contents](#)



HOSE, FITTINGS & ADAPTORS



MORE ADAPTORS!



Code	Description	Qty	Price	Was
2019-3678	3/8" BSP MALE X 3/8" BSP FEMALE SWIVEL JOINT	11	£11.12	£24.28
F2SC-12	HOSE INSERT FERRULE 2SC 3/4" HOSE ID	18	£0.64	£2.92
GAV22LR	3/4" BSP PARALLEL FEMALE X 22MM OUTSIDE DIAMETER, COMPRESSION FITTING, LIGHT DUTY, STUD COUPLING	5	£4.14	£14.12
1503-20	1503-20 AEROQUIP SINGLE WIRE BRAID SAE 100R5 HOSE, OUTER DIAMETER 38.1MM	2	£25.26	£50.60
B04M12F1.0EXT	M12 BY 1MM X 1/4" B F/M	2	£7.17	£15.60

BANJO HOSE FITTINGS



Code	Description	Qty	Price	Was
B0406CF	1/4" BSP FEMALE BANJO INSERT 3/8" HOSE ID	44	£1.14	£2.40
BJM-04-16	M16 X 1.5 METRIC FEMALE BANJO INSERT 1/4" HOSE ID	1	£4.50	£9.50

Click here to return to the
Table of Contents





PRESSURE GAUGES

Here at Flowfit, we have a wide range of hydraulic pressure gauges to meet your system's requirements. With models ranging from both base and rear-entry designs, and gauges which are suitable for a variety of system pressure ranges, you will be able to find the ideal model for your requirements, amongst our extensive range.

Glycerine Filled Pressure Gauges



Code	Description	Qty	Price	Was
PGP50B030PSIGLYS1/4	50MM 0-30 PSI 1/4" BSP BASE ENTRY	226	£0.99	£5.00
B222A242K	63MM 0-30 PSI 1/4" BSP BASE ENTRY	4	£3.86	£6.67
B222E262K	63MM 0-1000 PSI 1/4" BSP REAR ENTRY	13	£4.02	£7.69
B222E264K	63MM 0-1500 PSI 1/4" BSP REAR ENTRY	16	£4.02	£7.69
PG63B015000PSI	63MM 0-1500 PSI 1/4" BSP BASE ENTRY	77	£1.99	£14.64
B422E252N	100MM 0-300 PSI 1/2" BSP REAR ENTRY	1	£12.09	£21.21

Dry Pressure Gauges



Clamp to suit 63mm Glycerine Filled Pressure Gauge



Code	Description	Qty	Price	Was
PG63RDRY03000PSI	63mm 0-3000 PSI, 1/4" BSP REAR ENTRY	19	£1.81	£4.99
B401A239LT	100MM -1 BAR, 3/8" BSP BASE ENTRY	2	£11.28	£76.14

Code	Qty	Price	Was
ACC09701	12	£2.00	£5.89

[Click here to return to the Table of Contents](#)



QUICK RELEASE COUPLINGS



Flowfit quick release couplings are a type of hydraulic coupling system designed for fast and efficient connections and disconnections in hydraulic systems. These couplings are commonly used in a wide range of industries, including agriculture, construction, manufacturing, and transportation.

Male ISO A QRCs



Code	Description	Qty	Price	Was
VNKEN0904M	1/4" BSP, DN04	168	£1.32	£0.77
CAMIAM0606PUK	3/8" BSP, DN06	75	£1.96	£2.19

Male ISO B QRCs



Code	Description	Qty	Price	Was
103.11111AB	1/4" BSP, DN06	3	£1.91	£5.42
103.11112AC	3/8" BSP, DN10	11	£2.66	£6.97
103.11113AD	1/2" BSP, DN13	6	£3.16	£6.24

Female ISO A QRCs



Code	Description	Qty	Price	Was
CAMIAF0404	1/4" BSP, DN04	19	£4.24	£9.50
CAMIAF0606PUK	3/8" BSP, DN06	92	£3.56	£6.70
103.12113AD	1/2" BSP, DN13	9	£8.97	£16.28

Female ISO B QRCs



Code	Description	Qty	Price	Was
103.12112AC	3/8" BSP, DN10	3	£7.54	£19.29

Flat Face Quick Release Couplings



Code	Description	Qty	Price	Was
CAMFFF0608PUK	FEMALE FLAT FACE COUPLING, DN08, 1/4" BSP	24	£13.25	£10.16
264144	FEMALE FLAT FACE COUPLING, 3/8" BSP, C/W BLACK SLEEVE	72	£6.33	£0.03
281749	FEMALE FLAT FACE COUPLING, 3/8" BSP, C/W GREY SLEEVE	73	£6.65	£0.97
CAMFFF0812PUK	FEMALE FLAT FACE COUPLING, DN08, 3/8" BSP	19	£19.53	£55.60
CAMFFF1216PUK	FEMALE FLAT FACE COUPLING, DN12, 1/2" BSP	4	£51.86	£0.47
CAMFFM0812PUK	MALE FLAT FACE COUPLING, DN08, 3/4" BSP	46	£10.76	£20.50

Click here to return to the
Table of Contents





SOLENOID DIVERTER VALVES

12VDC 3 Way Solenoid Diverter Valve



24VDC 3 Way Solenoid Diverter Valves



Code	Description	Qty	Price	Was	Code	Description	Qty	Price	Was
SM3V3812CC	1/2" BSP PORTS,		£56.00	£127.65	SM3V3824CC	3/8" BSP PORTS	2	£56.00	£127.65

SPLINE COUPLINGS



18 TOOTH 4MM KEYWAY



Code	Description	Qty	Price	Was
B-3	GROUP 3, 1:8 35X31 DIN5482B 18 TOOTH 4MM KEYWAY	3	£4.99	£12.77

24 Teeth Splined Sleeve



Code	Description	Qty	Price	Was
01-10608	TO FIT A 50 X 45 - DIN 5482 SPLINED SHAFT		£56.30	£109.62

21 Teeth Splined Sleeve



Code	Description	Qty	Price	Was
01-10805	TO FIT W45 X 2 X 21 X 9H - DIN 5480 SPLINED SHAFT	2	£23.11	£120.66

DRIVE COUPLING SLEEVE



Code	Description	Qty	Price	Was
DC55S	DRIVE COUPLING SLEEVE	10	£40.00	£94.10

[Click here to return to the Table of Contents](#)



COMPRESSION FITTINGS



SWIVEL ELBOW



Code	Description	Qty	Price	Was
EWVD22L	M30 X 2 METRIC X 22MM OUTSIDE DIAMETER 90° SWIVEL ELBOW	2	£11.15	£26.16

1/4" BSP PARALLEL MALE X 6MM OD COMPRESSION FITTING



Code	Description	Qty	Price	Was
GES-6-SR-WD	1/4" BSP PARALLEL MALE X 6MM OUTSIDE DIAMETER, HEAVY DUTY	6	£0.56	£2.59

1/4" BSP PARALLEL MALE X 6MM STUD COUPLING



Code	Description	Qty	Price	Was
GAV22LR	3/4" BSP PARALLEL FEMALE X 22MM OUTSIDE DIAMETER, COMPRESSION FITTING, LIGHT DUTY, STUD COUPLING	5	£4.14	£14.12

STANDPIPE STEEL LIGHT DUTY



Code	Description	Qty	Price	Was
EGESD12LR 1/4WD	12MM OD X 1/4" BSP STANDPIPE STEEL LIGHT DUTY	39	£4.76	£20.84

3/8" BSP STUD COUPLING



Code	Description	Qty	Price
GES15-LR-3/8FOA	3/8" BSP PARALLEL MALE X 15MM OD, BODY ONLY, 60° CONE, LIGHT DUTY, STUD COUPLING	4	£2.17 £5.75
GES6-LR-3/8FOA	3/8" BSP PARALLEL MALE X 6MM OD, BODY ONLY, 60° CONE, LIGHT DUTY, STUD COUPLING	4	£3.41 £9.63
GES15-LRFOA	1/2" BSP PARALLEL MALE X 15MM OUTSIDE DIAMETER, 60° CONE, LIGHT DUTY, STUD COUPLING	6	£2.15 £6.67

Click here to return to the Table of Contents





HYDRAULIC ACCESSORIES

HYDRAULIC OIL FILL PLUGS



Code	Description	Qty	Price	Was
KMF38	MISELLI HYDRAULIC METAL FILLER PLUG WITH FILTER 3/8" BSP	9	£4.41	£8.92
TSN12	MISELLI HYDRAULIC OIL DRAIN PLUG 1/2" BSP	4	£2.11	£6.98
TCNS1	MISELLI HYDRAULIC OIL FILL PLUG WITH BREATHER HOLE 1" BSP	3	£1.61	£3.18
TPF26	PRESS-FIT FILLER BREATHER WITH LARGE BREATHER HOLE AND FILTER, 26MM O RING SEAL	2	£2.94	£9.87

OIL LEVEL INDICATORS



Code	Description	Qty	Price	Was
LSB1	MISELLI HYDRAULIC OIL LEVEL INDICATOR IN TRANSPARENT THERMO PLASTIC, 1" BSP	50	£2.52	£2.04
SLNT1	THREADED OIL LEVEL INDICATORS WITH CONTRAST SCREEN, 1" BSP	1	£2.65	£5.89

STEEL CLIP JUBILEES



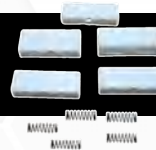
Code	Description	Qty	Price
1-MS	25MM X 35MM SINGLE MILD STEEL CLIP JUBILEE	246	£0.84 £2.04

RETURN LINE BUSHING



Code	Description	Qty	Price
SRF-14-SA	RETURN LINE BUSHING FOR TUBES WITH OUTSIDE Ø14MM SA (SANTOPRENE)	9	£0.99 £1.99
SRF-22-SA	RETURN LINE BUSHING FOR TUBES WITH OUTSIDE Ø22MM SA (SANTOPRENE)	4	£0.99 £1.99

HF10 VANES SET



Code	Description	Qty	Price	Was
R13926000	SET OF VANES FOR HF10	3	£21.75	£42.95

PUISI O-RING TO SUIT HF10



Code	Description	Qty	Price	Was
R06710000	PUISI VISCOMAT FRONT CASING O-RING TO SUIT HF10	9	£1.25	£2.59

Click here to return to the Table of Contents



HYDRAULIC ACCESSORIES



Low Level Float Switch



Code	Description	Qty	Price	Was
LM1CFPA100	100MM DEPTH	10	£30.03	£33.95

MANIFOLD ISONIC 1000



Code	Description	Qty	Price	Was
M103KO	MANIFOLD ISONIC 1000 3 STATIONS PUSH IN FITTINGS FOR 6MM TUBING MAINFOLD ONLY	3	£12.50	£25.00



INGCO SPANNER SET

Code	Description	Qty	Price	Was
HKSPA1082	8 PIECES COMBINATION SPANNER SET	1	£9.54	£22.50

HYDRAULIC MODULAR FILLER BREATHERS



Code	Description	Qty	Price	Was
AB98210011UC	HYDRAULIC FILTRATION, NON-PRESSURISED, SINGLE HOLE, MODULAR FILLER BREATHER, 10 MICRON, GLASS FILLED NYLON	10	£28.62	£48.20
AB98810011UC	HYDRAULIC FILTRATION, NON-PRESSURISED, 6 HOLE, MODULAR FILLER BREATHER, 10 MICRON, GLASS FILLED NYLON	2	£30.58	£46.20

CLIP DISPENSERS STAND MILD STEEL



Code	Description	Qty	Price	Was
CD-100MS	9.5 TO 50MM DIAMETER RANGE, CLIP DISPENSER, PACK QUANTITY 103, ZINC PROTECTED MILD STEEL BAND, ZINC PROTECTED MILD STEEL HOUSING, ZINC PROTECTED MILD STEEL SCREWS	2	£74.06	£322.06

Click here to return to the Table of Contents



**Stock levels are correct at the time of print.
Please be aware stock levels may differ
at time of purchase.**

www.flowfitonline.com

Phone: +44 (0)1584 876 033

Email: sales@flowfitonline.com



CALL

01584 876033

MON-THURS 8:30AM-5:00PM

FRI 8:00AM-4:00PM



CLICK

www.flowfitonline.com

24 HOURS A DAY

7 DAYS A WEEK



VISIT

Shop opens 5 Days a week

MON-THURS 8:30AM-5:00PM

FRI 8:00AM-4:00PM



Everything Hydraulic

Harrier Fluid Power Ltd T/A Flowfit, Parys Road, Ludlow Business Park, Ludlow, Shropshire SY8 1XY

Telephone +44 (0)1584 876 033 Fax: +44 (0)1584 876 044

Email: sales@flowfitonline.com

Every effort has been made to ensure that the information in this catalogue is correct.

However, we reserve the right to introduce changes without prior notice.

This catalogue supersedes all previous sales catalogues.