



# Better Solutions Better Care

## Product Overview

# Intelligent care solutions you can evolve with

---

When you choose a LINAK® product nothing is left to chance. Every one of our products has been developed to improve life – both that of the patient and of the carer – and with your needs and ambitions in mind.

Whether you are looking for a linear actuator solution to provide you with basic movement or for advanced built-in intelligence to take care solutions to the next level, our product range has got it covered.

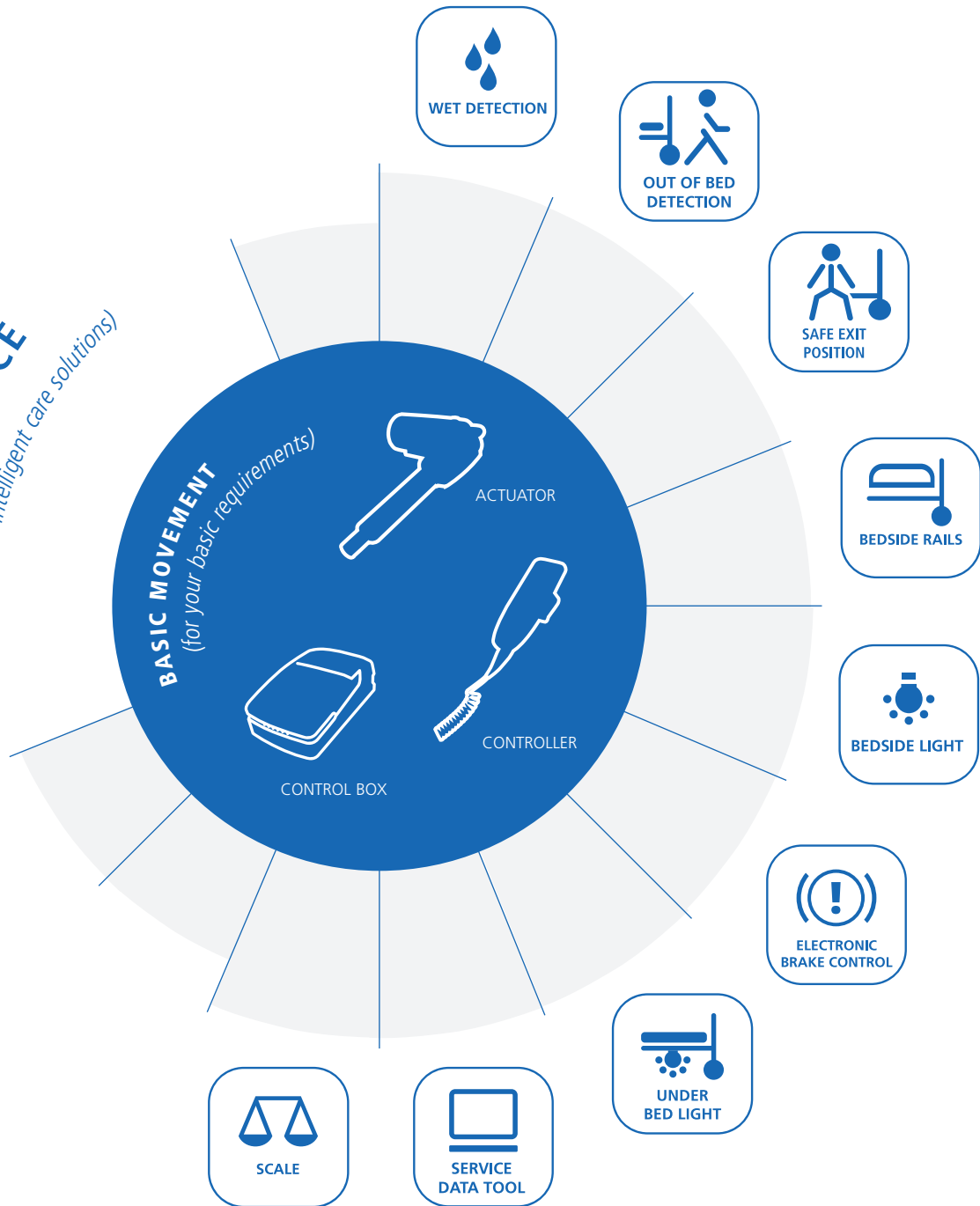
And the best part is that you can evolve with LINAK. At your own pace. Most of our electric actuators can be equipped with as many value-adding features as you like over time, including sensor systems and intelligent communication. Quite simply because we understand that requirements may change and societal demand may grow – and know how important it is to have a partner who is 100% behind you all the way.

Browse the product catalogue to get an overview of the versatility of LINAK products or contact your local LINAK representative to get a more elaborated talk about the potential we can help you uncover in your solutions.

## LINAK PRODUCTS ARE DEDICATED TO

- Improving ergonomics
- Improving comfort
- Improving efficiency
- Improving safety

**INTELLIGENCE**  
(for advanced intelligent care solutions)



**CARE FOR TOMORROW TODAY™**

**Care for tomorrow today is the mind-set we apply to everything we do**

It's about keeping a strong focus on ergonomics and thinking ahead to find intelligent care solutions to the pending healthcare challenge: More people in need of care, but fewer hands to do the caring

Read more: [LINAK.COM/CAREFORTOMORROWTODAY](http://LINAK.COM/CAREFORTOMORROWTODAY)

# Actuators

## LA40

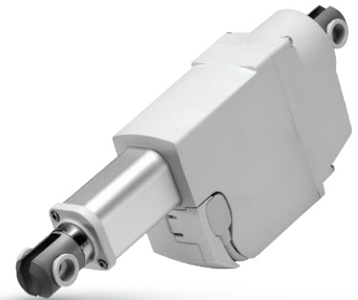
Durable actuator with powerful lift (up to 8000 N) made for a range of healthcare applications, e.g. beds, couches and chairs for treatment, and dental chairs.



- Up to 8,000 N
- High speed - 16 mm/s
- Easy to clean
- High performance

## LA23

Powerful linear actuator with compact design to fit into narrow spaces. A high push/pull force makes it ideal for almost any application. Come with Integrated Controller (IC) as an option.



- Up to 2,500 N
- Compact design
- Strong
- Speed: 9,4 mm/s

## LA12

Ideal electric actuator for applications with short linear movements. A practical, cost-effective alternative to small-scale hydraulic and pneumatic systems.



- Up to 750 N
- Compact design
- Robust
- Speed: 40 mm/s

## LA27

Powerful actuator designed for care beds. Ideal for leg- and backrest. Robust construction design (6000 N push/4000 N pull). Comes with Quick-Release option.



- Up to 6,000 N in push application
- Up to 4,000 N in pull application
- Powerful
- Speed: 13 mm/s

# Actuators

## LA27C

Strong push force (up to 8,000 N) for applications with high load on the actuator, e.g. for medical beds or couches..



- Up to 6,000 N in push & 4,000 N in pull
- Powerful
- Exchangeable cables
- Speed: 13 mm/s/s

## LA28

Powerful, low-noise and smooth linear actuator ideal for many applications within agriculture, industrial automation or healthcare. Comes with IPx6 protection. Max thrust: 3,500 N.



- Up to 3,500 N
- Quiet
- Powerful
- Speed: 46 mm/s

## LA28 Compact

Strong, compact, silent and very reliable linear actuator originally designed for healthcare applications like wheelchairs, patient lifts, and treatment chairs. Max thrust: 3,500 N.



- Up to 3,500 N
- Quiet
- Powerful
- Speed: 46 mm/s

## LA30

Multi-purpose linear actuator with high speed and power. Ideal for tasks within healthcare, industrial automation or agriculture machinery. Push up to 6000 N push at 65 mm/s.



- Up to 6,000 N
- Compact design
- Powerful
- Speed: 65 mm/s

# Actuators

## LA31 CARELINE®

Strong and low-noise linear actuator designed for beds a variety of applications. Works with all LINAK health care control boxes. Classified IPx6. Max thrust: 6,000 N.

- Up to 6,000 N
- Compact design
- Powerful
- Speed: 65 mm/s



## LA32

Strong (max thrust: 6,000N) linear actuator for a wide range of applications. Features like: LINAK Spline, Safety Nut, and Quick-Release makes it ideal for hospital beds. Classified IPx6.

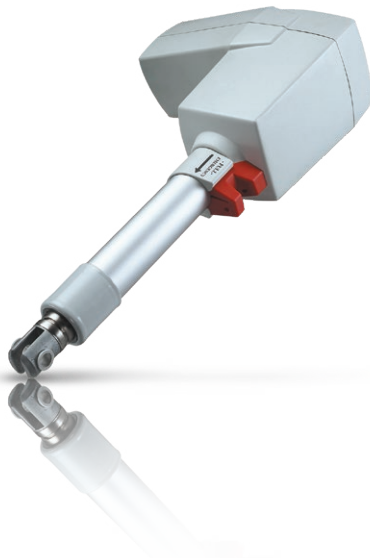
- Up to 6,000 N
- Outstanding performance with many special options
- Powerful
- Speed: 15 mm/s



## LA34

Powerful linear actuator (10,000 N push / 4,000 N pull) in a compact design. Made partly of low weight composite materials. Ideal for both medical and industrial applications.

- Up to 10,000 N in push & 6,000 N in pull
- Compact design
- Outstanding performance
- Speed: 18 mm/s



## LA43

Strong (8,000 N push) linear actuator with a wide range of safety features, making it an ideal actuator for patient lifts, care beds, and dental chairs etc.

- Up to 8,000 N (push only)
- Powerful
- Wide range of safety options



# Actuators

## LA44

Very powerful linear actuator with several safety features. Ideal for applications like patient lifts, dental chairs, and various healthcare beds. Max thrust: 12,000 N push.

- Up to 12,000 N (push only) Powerful
- Wide range of safety options
- Speed: 14 mm/s



## LA44IC

Strong linear actuator with LINAK integrated controller (IC). Ideal for adjustable couches and treatment chairs where space is too limited for a separate control box.

- High speed
- Low noise
- Low energy consumption
- High lifting force up to 12,000 N
- Read out service data from the actuator



## SERVICE DATA TOOL

Ensures efficient maintenance with:

- Knowledge about wear and tear
- Fault finding tool
- Easy service visit reports



# Control boxes

## CA30

2-channel IPx6 Washable control box for LINAK actuators. Comes with unique slide-on brackets for easy mounting, integrated cable lock system, and SMPS.



- High performance
- Easy fit
- Low weight 0.5 kg
- LINAK quality
- Switch mode power supply

## CA40

4-channel IPx6 Washable control box for electric actuators. Comes with unique slide-on brackets for easy mounting, integrated cable lock system, and SMPS.



- High performance
- Easy fit
- Switch Mode Power Supply
- LINAK quality

## C061

Innovative 4-channel control box for programmable actuator systems in health care. Ideal in a wide range of applications due to IPx6 washable water protection. Comes with multi SMPS and intuitive cable management.



- High performance
- Cable management
- Low weight
- OpenBus technology
- Read out service data from the Control box

## CBS OBMe

Control box designed for LINAK linear actuator systems used in adjustable medical applications. Comes with various software solutions to support multiple functionalities.



- Compatible and flexible
- Mini-fit plug and std. endstop switch/ signal switch are all supported

### SERVICE DATA TOOL

Ensures efficient maintenance with:

- Knowledge about wear and tear
- Fault finding tool
- Easy service visit reports





# Control boxes

## CB8A

Compact 2-channel control box for electric linear actuators used in various healthcare applications with narrow space. Built-in battery available as option.



- Voltage in: 24 V AC (use charger)
- Duty cycle: 10 %
- Simple design

## CB9C

Durable 4-channel control box for linear actuators in healthcare applications, like hospital and care beds. Comes with electronic over-load protection and certified IPx4 or IPx6.



- Voltage in: 230/120/100 V AC
- Duty Cycle: 10 %
- Can be fully integrated

## CB16 OpenBus

Powerful control box for multiple electric actuator systems. Developed for care- and hospital beds, couches and chairs (treatment / examination). Comes with SMPS and wireless hand control.



- Voltage in: 230/120/100 V AC
- Duty cycle: 10 %
- Compatible and flexible

## CB20 OpenBus

Advanced control box for LINAK actuator systems. Ideal for complex movement applications. Comes with Service Data logging and technology making it easy to service and to update.



- Voltage in: 230/120/100 V AC
- Duty cycle: 10 %
- Unique safety concept

# Control boxes

## Jumbo Care

Control box for the high-end LINAK JUMBO system used for patient lifts. Comes with recordable max SWL (Safe Working Load) and possibility for built-in controls.

- High-end JUMBO box for patient lifters
- Voltage output: 24 V DC
- Duty Cycle: 10 %
- Read out service data from the Control box



## Jumbo Home

LINAK control box with built-in battery. Used in JUMBO systems with one or two actuators. Ensures comfort and comes with soft-start/stop function, emergency lowering, and recordable max SWL.

- Specially developed for patient lifts
- Voltage in: 230/120/100 V AC
- Duty cycle: 10 %



## COBO

LINAK COBO is an interface communication box for control box with multiple actuator connections that require large battery backup. Come as IPx4 or IPx5 options.

- For use with the JUMBO battery pack and CU20
- Makes increased battery power available



## SERVICE DATA TOOL

Ensures efficient maintenance with:

- Knowledge about wear and tear
- Fault finding tool
- Easy service visit reports



# Controls

## ACC

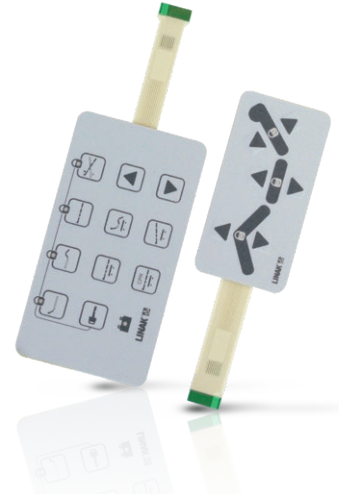
Attendant Control Compact (ACC). Cost and size optimised control unit with up to 11 buttons. Come with optional lock-out / key function. Compatible with OpenBus interface control boxes.



- Compact
- Lock-out function
- Compatible with control boxes that use an OpenBus™ interface

## ACK OpenBus

Attendant Control Keypad (ACK) is used as nurse controls or side panel handset. Able to control up to five channels. Optional colour and graphic design customisation.



- Integrate double ACK3 keypads in the bed side rails for flexible bed control for both patient and nurse

## ACM

Attendant Control Mini (ACM) is a control panel able to disconnect individual handset channels from the control box. Typically used in bed applications.



- Low-cost alternative to the existing ACP
- Compact design and simple operation

## ACO

Attendant Control OpenBus (ACO) is a flexible control unit with numerous optional functions. Can also be used as handset keys and/or lock out controls. Compatible with OpenBus control boxes.



- Cost optimised and compact
- Lock-out function visible with yellow LED's
- Compatible with control boxes that use an OpenBus interface

# Controls

## ACT

The Attendant Control Touch (ACT) for the hospital and care segment is a control panel with an intuitive, graphical three-level user interface:

1. Care mode for caregivers and relatives (bed operation)
2. Extended care mode for caregivers (locking function, settings etc.)
3. Service mode for technicians (advanced settings)



- All-in-one control panel
- Intuitive user interface
- 3 Level of operation

## DPH

LINAK DPH is an ideal control for linear actuator systems, e.g. treatment couches, chairs, patient lifts, and medical tables. Available as optional IPx4 class.



- Small
- Compact
- Userfriendly

## FPP

Flexible Patient Panel (FPP). Comes with a flexible arm making it ideal for hospital and nursing home beds. It enables patients to control and adjust for instance backrest and leg support.



- User-friendly
- Easy to install
- Compatible with control boxes that use an OpenBus™ interface

## FS3

LINAK FS3 is a foot switch control designed either for frame mount or for use stand-alone on the floor. Available with one or two channels as standard.



- The foot switch is available as a floor model or bed model
- Intuitive - easy to use
- Expandable modules

# Controls

## IRO

IRO is an OpenBus infrared receiver for linear actuator systems in care beds. A cost-effective and compact alternative to cabled handset controls with the option of IPx4 approval.



- Wireless communication with HB20
- Operation of several applications by mean of only one hand control

## HB20

CARELINE HB20 is for use with the IRO OpenBus™. Up to 12 buttons enable the MEDLINE & CARELINE HB20 to be used for almost all kinds of MEDLINE and CARELINE applications. The handset series is compatible with OpenBus™ Control boxes. The HB20 series combines ergonomic design with a wide range of functionalities such as memory and infrared communication



- Combines ergonomic design with a wide range of functionalities

## HB30

LINAK handset control unit, ideal for actuator systems in patient lifts, treatment chairs, couches and tables. Available for both analogue and OpenBus control boxes.



- User-friendly
- Ergonomic design
- Exchangeable cables

## HB70

LINAK handset control unit for electric linear actuator systems. Control has up to 10 soft-touch buttons and comes with protection class and optionally as IPx6 Washable.



- Combines ergonomic design and functionality
- Protection class IPX6 as standard

# Controls

## HB80

IPx6 washable handset control for LINAK actuator systems in hospital beds, treatment couches, or patient lifts. Comes with 10-12 ergonomic buttons and optional back light function.



- Ergonomic design shaped for the hand
- High water resistance with optional IP degree of IPX7 or IPX6 washable

## HD8X

Durable LINAK handset control for actuators used in health care applications. Come with optional lock functions to ensure safety for patients and optional LED indicators. IPx4 or IPx6 washable.



- IPX6 Washable (optional)
- 2 level operation
- Magnet and hock

## HL70

LINAK handset control for actuators in health care applications where a lock function is required to ensure safety for patients. Able to control up to five actuators.



- Integrated locking function

## HL80

Handset control able to adjust five LINAK actuators. Ideal for hospital beds where lock function helps ensure patient safety. Come with IPx4 protection class.



- Ergonomic design and switch activations
- Lockable handset

# Controls

---

## SCO

LINAK Scale is a weight-measuring system for advanced linear actuator systems. Consists of a SCO (Scale Control OpenBus) and a QLCI (Quad Load Cell Interface).



- Version for heavy weight applications, 460 kg (1014 lbs); this version has a lower resolution than the 255 kg version

# Accessories

## BA19

The BA19 is an IPx6 classified lead acid battery made for actuator systems used in various adjustable applications within healthcare, like hospital beds and nursing home beds. Used with CA30, CA40 and CO61 control boxes. Comes with internal charger.



- Lead acid
- 1.2 Ah/28.8 Wh
- IPX6 Washable
- Slide on bracket

## BA21\*

Environmentally friendly Li-ion battery designed for LINAK control boxes. Ideal for hospital and medical applications where IPx6 washable protection class is required.



- Li-ion battery
- 2.2 Ah at 25V
- IPX6 Washable
- Read out service data from the battery

## BAJL Li-Ion battery pack\*

Li-ion battery solution for mobile applications – like patient lifts – using the LINAK JUMBO system. Longer battery lifetime, environmentally friendly and rechargeable.



- Extended battery lifetime
- Low weight
- Backward compatible with Jumbo Care
- Available in 2.25 Ah and 4.50 Ah

## CHJ2

External battery charger for LINAK JUMBO systems in patient lifts. Allows one battery to charge while a system operates on a second battery. Come with LED light indicators and multi-SMPS.



- Specially designed for use as a wall-charger for the JUMBO system

*If any and all of the Li-ion batteries built into LINAK products are found to be defective under warranty, LINAK will provide a new product to the OEM. LINAK explicitly disclaims all other remedies. LINAK shall not in any event be liable under any circumstances for any special indirect punitive incidental or consequential damages or losses arising from any incident related to the inherent risk of thermal runaway in the Li-ion cell and any use of LINAK products. Moreover, LINAK explicitly disclaims lost profits, failure to realise expected savings, any claim against our customer by a third party, or any other commercial or economic losses of any kind, even if LINAK has been advised of the possibility of such damages or losses.*

## SERVICE DATA TOOL

Ensures efficient maintenance with:

- Knowledge about wear and tear
- Fault finding tool
- Easy service visit reports





# Accessories

## MJB Gateway

MJB is a LINAK modular junction box for OpenBus systems. Gateway version for connecting an application to hospital infrastructure allowing functions like nurse-calls and Out-of-Bed information.



- Designed for use together with OpenBus™ control boxes
- Possible to connect multiple handsets, attendant controls or 3<sup>rd</sup> party products

## Safety limit switch

SLS is a safety limit switch used in LINAK linear actuator systems, where unintentional positioning must be prevented.



- Can be mounted in connection with the 24V DC actuators and a control box on e.g. a bed frame

## MJB Under Bed Light (UBL)

MJB is a modular junction box for linear actuator systems with OpenBus control boxes. Ideal for healthcare applications where multiple handsets and attendant controls are required. External LED cable makes location of Under Bed Light function more flexible.



- Designed for use together with OpenBus™ control boxes
- The external LED cable makes it more flexible to use the UBL

## UBL Under Bed Light (UBL2)

LINAK UBL2 provides a more well distributed Under Bed Light to hospital and nursing home beds as well as leisure beds using linear actuator systems. Optional IPx6 washable classification.



- OpenBus version
- 3 LEDs powerful light
- Software-controlled light intensity

# Accessories

## SMPS30

300W power unit with a very low standby energy consumption. Ideal for couches, tables, and beds for treatment and examination. Come with LED power status indicator, and an IPx6 protection degree.



- Switch mode power supply with universal input voltage (100-240V)
- Exchangeable cables
- High safety and flexibility

## BL1 Standard

Compact and powerful (2,000 N push) 3-part lifting column with up to 400 mm stroke. Smooth design with exchangeable cable connection and optional integrated cable throughput.



- Thrust: 2,000 N
- Speed: 18 mm/s
- Optional cable inside

## LC2

Very stable electric lifting column designed to provide unwavering vertical lift (5,000 N push load) to applications where some torsion or bending occur.



- Thrust: 5,000 N
- Speed: 18 mm/s

## LP2

Durable and reliable electric lifting column ideal where vertical positioning of substantial load is required. Meant for industrial workstations LP2 delivers thrust of up to 6,300 N.



- Thrust: 6,300 N
- Speed: 21 mm/s

# Accessories

---

## LP3

3-stage lifting column for precise vertical lift and demanding bending moment. Ideal for a number of medical applications, e.g. treatment chairs as well as various industrial workstations.



- Thrust: 2,400 N
- Speed: 18 mm/s



## Global presence

LINAK® has a well-developed sales and service organisation in Europe, Americas, Asia and Australia. Therefore, we can assist you and your customers locally, under the global sales concept idea: Be global, act local

---

### TERMS OF USE

The user is responsible for determining the suitability of LINAK products for a specific application. LINAK takes great care in providing accurate and up-to-date information on its products. However, due to continuous development in order to improve its products, LINAK products are subject to frequent modifications and changes without prior notice. Therefore, LINAK cannot guarantee the correct and actual status of said information on its products. While LINAK uses its best efforts to fulfil orders, LINAK cannot, for the same reasons as mentioned above, guarantee the availability of any particular product. Therefore, LINAK reserves the right to discontinue the sale of any product displayed on its website or listed in its catalogues or other written material drawn up by LINAK.

All sales are subject to the Standard Terms of Sale and Delivery for LINAK. For a copy hereof, please contact LINAK.

LINAK has a world-class sales and service organisation.  
Today we are present in 35 countries all over the world.  
For further information, please visit our website: **LINAK.COM**

**LINAK**®   
WE IMPROVE YOUR LIFE