



SINCE 2016

Venture for
Tomorrow
Korean Venture Entrepreneurship

**Aiview
Technology**

COVID 19 Infectious disease virus spread prevention and Fire Prevention
Ultimate Video Surveillance Solution

Thermal Imaging Camera

www.aiviewtech.com

Lock the stable door after the horse has bolted.

거안 사위(居安思危)

in case of Disaster: Prevention is the Best.

"Preparing with a small amount of money is like spending a lot of money. It's worth it."

"Benjamin Franklin"



We Think your Disaster and Security



Aiview Technology Co., LTD.

1125, No.1 Seongnam Central BizTower, Galmachi-ro 314, Jungwon-gu,
Seongnam-city, Gyeonggi-do, Korea 13201

Tel: 82-31-707-6188 Email: ssatellite@naver.com



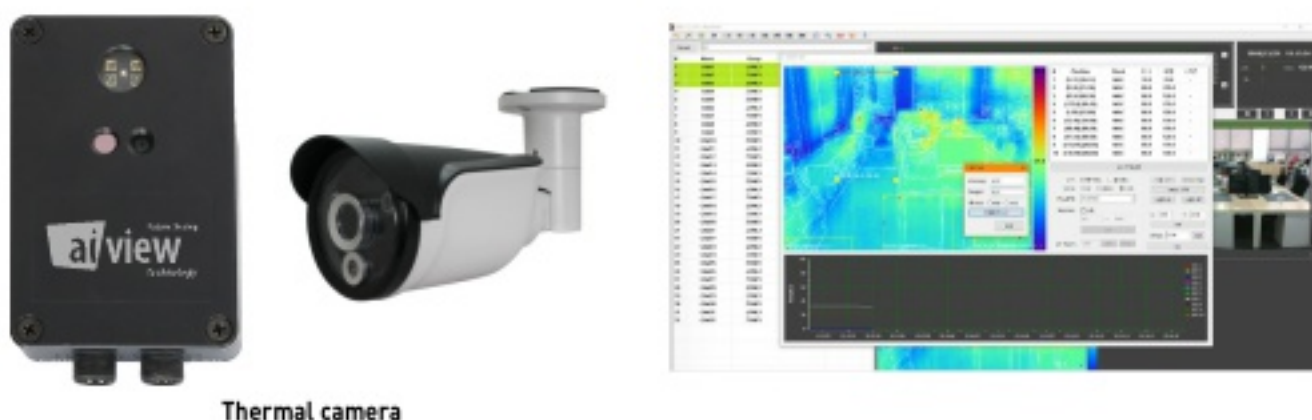


Thermal Imaging Camera

Purpose: The thermal imaging redundancy camera is an intelligent infrared camera that senses human temperature. It is also a device to detect abnormal signs and prevent fire.

- Temperature data received from the thermal image sensor
- It analyzes the CCD image and detects abnormal signal monitoring function.
- This equipment can be applied in conjunction with NVR and VMS

Establishment of 10 surveillance zones and maximum / minimum / average temperature Monitoring for each region for the first time in Korea



Thermal camera



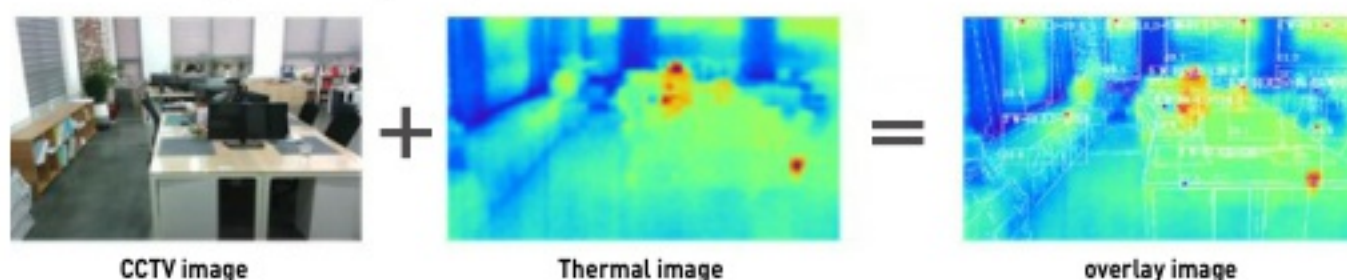
PoP up and Alarm



Human Temperature detection



Simultaneous display of superimposed images that combine real image / thermal image / overlay image for the first time in Korea



CCTV image

Thermal image

overlay image

It is equipped with thermal image sensor and CCD camera lens.
This product can detect both 'Thermal' and 'flame'.

Specification :

Items	Spec.
Sensor Type	Uncooled Thermopile Array
Field of View	FOV 63.5°/ 51°(V)x38°(H)
Number of Pixels	80x60 / 160x120
Working Distance	Min 0.1m Max 15.0m
Temperature	-10°C - 120°C
Size(H x W x D)	79 x 242 x 81mm 70 x 115 x 27mm
communication	Ethernet, TCP/IP

Specification :

Items	Spec.
CCTV	2Mega Pixel
Temperature sensing time	Max 10 sec(AVG 5sec)
Flame sensing time	Max 30 sec(AVG 15sec)
Flame sensing size	30x30 cm
Flame min detector area	320 x 240 image → 20 x 20 Pixel
Etc	RTSP support Onvif support

Application :

- Public School,
- Municipality Building
- Consulate Korea

