

OMNITECH



CATALOG

CNC ROUTER & LASER & PLASMA & KNIFE

About Us

OMNI is enterprise specializing in manufacturing, marketing and R&D of cnc router, laser and cnc plasma cutting machine. OMNI supply machines to a wide variety of manufacturing sectors including aerospace, automotive, marine, recreational vehicles, 3D sculpture, concept models, pattern making, formed plastics and wood working, sign.



Why choose OMNI?

- +Improve Efficiency.
- +Reduction in Labor Cost.
- +Installation & Training Worldwide.

Mission Statement

Delivery : To distribute high value, quality and safety to our partners and customers;

Economic: To operate company on a sustainable financial basis of profitable growth, increase and expand development for our partners and customers;

Treatment: To respect, promote teamwork, encourage personal freedom and growth for employees.

Certificates



Contents

4&5 Axis CNC Router

+ Gantry Moving 4Axis CNC Router	2
+ Table Moving 4Axis	3
+ 5 Axis CNC Router	4

ATC CNC Machining Center Series

+ Linear Type ATC Machining Center	5
+ Carrousel Type ATC Machining Center	6
+ Moving Bridge ATC Machining Center	7

Basic Series

+ Economical Model CNC Router	8
+ High Precision CNC Router	9

CNC Knife Cutting Machine 10

4 Axis Linkage CNC Router 11

Multi-Head CNC Router Series

+ Pneumatic Tool Change CNC Router	12
+ Synchronized Multi-Head CNC Router A Model	13
+ Synchronized Multi-Head CNC Router B Model	14

EPS/Styrofoam CNC Router Series

+ Economical EPS/Styrofoam CNC Router	15
+ Industrial EPS/Styrofoam CNC Router	16

CNC Stone Router 17

Sign Making CNC Router 18

CNC Turner/Lather

+ 12S CNC Router	19
+ OMNI 1500A/OMNI1500B	20

Custom Made CNC Router 21

All-in-One Machine Series 22

Plasma Cutting Machine 23

Flame & Plasma Cutting Machine 24

Laser Machine Series

+ Laser Die Cutting Machine	25
+ Textile Cutting Laser Machine	26
+ Marble Engraving Laser Machine	27
+ Sign Making Laser Machine	28
+ Metal & Nonmetal Laser Cutting Machine	29
+ Fiber Laser Cutting Machine	30

Optional Accessories 31

Aggregate Head 32

Gantry Moving 4 Axis

Designed for European style furniture, (such as soffit, crown moulding, wall frame, stair jamb, column, balustrade), auto motive interior & exterior, mould, arts & crafts, chair, 3D work etc.



Size	Working Area(XY)	1600*1800; 1500*3000 or others
	Working Area(Z)	1000mm or others
Accuracy	Positioning Accuracy	±0.02/300mm
	Repeatability	±0.02/300mm
Control Part	3 Axis Control Motor	AC Servo Motor
	Controller	Syntec PC platform
	Interface	Ethernet, USB
Spindle Motor	Output	4.5kw (6HP), 18000RPM
	Collet	ER32
Table Structure	Material Hold Down	T slot
Traverse System	Traverse System	Linear Guide on 3 axis, Ballscrew on 3 axis
	Max. Traverse Speed	45m/min
Max power consumption		4.2KW(without spindle)
Power Source		380V/3phase; 220V/3phase
Command Language		G and M code
Software		UG, AlphaCAM, Type3, Ucamcam

Table Moving 4 Axis



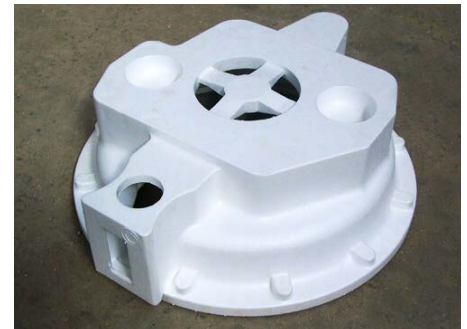
ITEM	DESCRIPTION
X Y Z axis working area	1300*2500*500mm, more size
C Aixs	+135°
Table size	1420*3040mm
XYZ repositioning positioning accuracy	±0.05mm
Table surface	Vacuum combined with T-slot
Frame	Steel tube structure
Drive system X-Y axis	Rack and pinion
Drive system Z axis	Ball screw
Max power consumption	4.2KW(without spindle)
Max working speed	20000mm/min
Spindle speed	0-24000rpm
Working mode	servo
Working voltage	AC380V (220V) 3 phase
Command language	G code, M code
Interface	USB, Ethernet
Operating system	Syntec/ Siemens
Software	UG, Alpha Cam, Type3, Ucamcam

5 Axis CNC Router



ITEM	DESCRIPTION
X,Y,Z working area	1220*2440*950mm
Table size	1320*2540mm
Spindle	10kw HSD spindle, 1000-24000rpm, liquid cool
Tool Holder	HSK63F
Motor	Yaskawa Servo motor and driver
Moving mode	Table moving
C travelling	±213°
A travelling	±135°
Beam spacing(MM)	4260
Beam Height(MM)	2150
product fixed form	T Slot Table
Tool magazine	Carrousel tool magazine (8 positions)
X, Y, Z Travelling Potioning Accuracy	±0.03/300mm
X, Y, Z Travelling Repositioning Accuracy	±0.05mm
Controller	OSAI/ Siemens
Max Rapid Travel Rate	25,000mm/min
Max working speed	15,000mm/min
Z Axis	15,000mmm/min
Machine size	4260*2150*3300
Total Power(kw)	24KW
Maximum lifting weights	7.5T
Working voltage	AC380V/50Hz
Command languages	G code,M code, F/S
Option	MasterCAM, Powermill, AlphaCAM etc 5 axis software package

Linear Type ATC CNC Router



Size	Working Area(XY)	1300*2500mm;1500*3000mm or more
	Working Area(Z)	300mm or more
Accuracy	Positioning Accuracy	0.02mm
	Repeatability	+/- 0.05mm
Control Part	3 Axis Control Motor	AC Servo Motor
	Controller	Syntec PC platform
	Interface	USB and Ethernet
Spindle Motor	Output	9kw , 24000RPM
	Collet	ER32, Max 20mm
Tool Change	Automatic tool changer	BT30 ISO30, 8 / 12 / 24 positions
Table Structure	Material Hold Down	Vacuum Combined T slot
Traverse System	Traverse System	Linear Guide on 3 Axis, Rack & Pinion on XY, Ballscrew on Z
	Max. Traverse Speed	45m/min
Power Source		380V/3phase; 220V/3phase
Optional	Vacuum pump	Watering or free-oil type
Command Language		G and M code

Carrousel Type ATC CNC Router



Size	Working Area(XY)	1300*2500mm;1500*3000mm or more
	Working Area(Z)	300m or more
Accuracy	Positioning Accuracy	0.02mm
	Repeatability	+/- 0.05mm
Control Part	3 Axis Control Motor	AC Servo Motor
	Controller	Syntec PC platform
	Interface	USB & Ethernet
Spindle Motor	Output	9kw (12HP), 24000RPM
	Collet	ER32, Max 20mm
Tool Change	Automatic tool changer	BT30 ISO30, 8 positions
Table Structure	Material Hold Down	Vacuum Combined T slot
Traverse System	Traverse System	Linear Guide on 3 Axis, Rack & Pinion on XY, Ballscrew on Z
	Max. Traverse Speed	45m/min
Power Source		380V/3phase; 220V/3phase
Optional	Vacuum pump	Watering or free-oil type
Command Language		G and M code

Moving Bridge CNC Machining Center

Furniture: ideally suitable for processing cabinet door, wooden door, solid wood furniture, panel wood furniture, windows, tables and chairs, etc.

+ Well-suited for processing panel, insulating materials, plastic, epoxy resin, carbon mixed compound, etc.

+ Decoration: acrylic, PVC, density board, artificial stone, organic glass, soft metals like aluminum and copper,

+ Designed to meet diverse and complicated processing requirements, highly versatile with routing, drilling, cutting, side milling, sawing and other functions.

+ Vacuum worktable fitted with aluminum alloy bars and suction cups is rigid yet flexible for various configurations. Cropping the full sheet to your ideal size, routing, drilling, sawing, cutting, and milling—multiple functions, all in one.



Size	Working Area(XYZ)	1300x3400x350mm
	Table Size	1500*4000mm
Accuracy	Positioning Accuracy	0.05mm
	Repeatability	+/- 0.005mm
Control Part	3 Axis Control Motor	AC Servo Motor
	Controller	Syntec PC platform
	Interface	Ethernet, USB
Spindle Motor	Output	9kw (12HP), 24000RPM
	Collet	ISO30
Boring Unit		14 vertical+3 horizontal+2 sawing units/ 9 vertical+3 horizontal+2 sawing units
Table Structure	Material Hold Down	Vacuum pad clamping, moving beam
Traverse System	Traverse System	Rack and Pinion Drive, Hiwin Rail Linear Bearings on Y, Hiwin Rail Linear Bearings and Ball Screw on X and Z
	Max. Traverse Speed	30m/min
Power Source		380V/3phase; 220V/3phase
Optional	Vacuum pump	Watering or free-oil type
Command Language		G and M code

Economical CNC Router



Size	Working Area(XY)	1300*2500mm,1500*3000mm and more
	Working Area(Z)	200mm or others
Accuracy	Positioning Accuracy	0.03mm
	Repeatability	+/- 0.05mm
Control Part	3 Axis Control Motor	Stepper Motor
	Controller	MACH3 DSP Remote Controller NC STUDIO
	Interface	USB
Spindle Motor	Output	3kw,4.5kw,6kw / aircooling or watercooling
	Collet	ER20/ER25
Table Structure	Material Hold Down	Vacuum Combined T slot
Traverse System	Traverse System	Linear Guide on 3 axis, Rack and Pinion on Y, Ballscrew on Z
	Max. Traverse Speed	30m/min
Power Source		380V/3phase; 220V/3phase
Optional	Vacuum pump	Watering or free-oil type
	ATC	Linear Type or Carrousel Type ATC
	Dust Collecting System	Dust collector + Dust collector hood
Command Language		G code & PLT

High Precision CNC Router

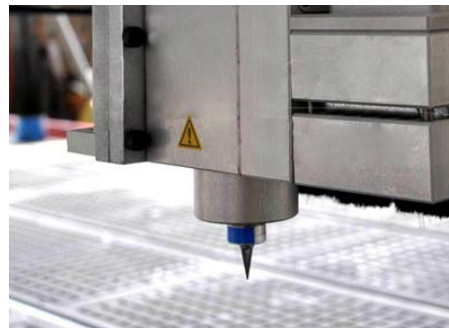
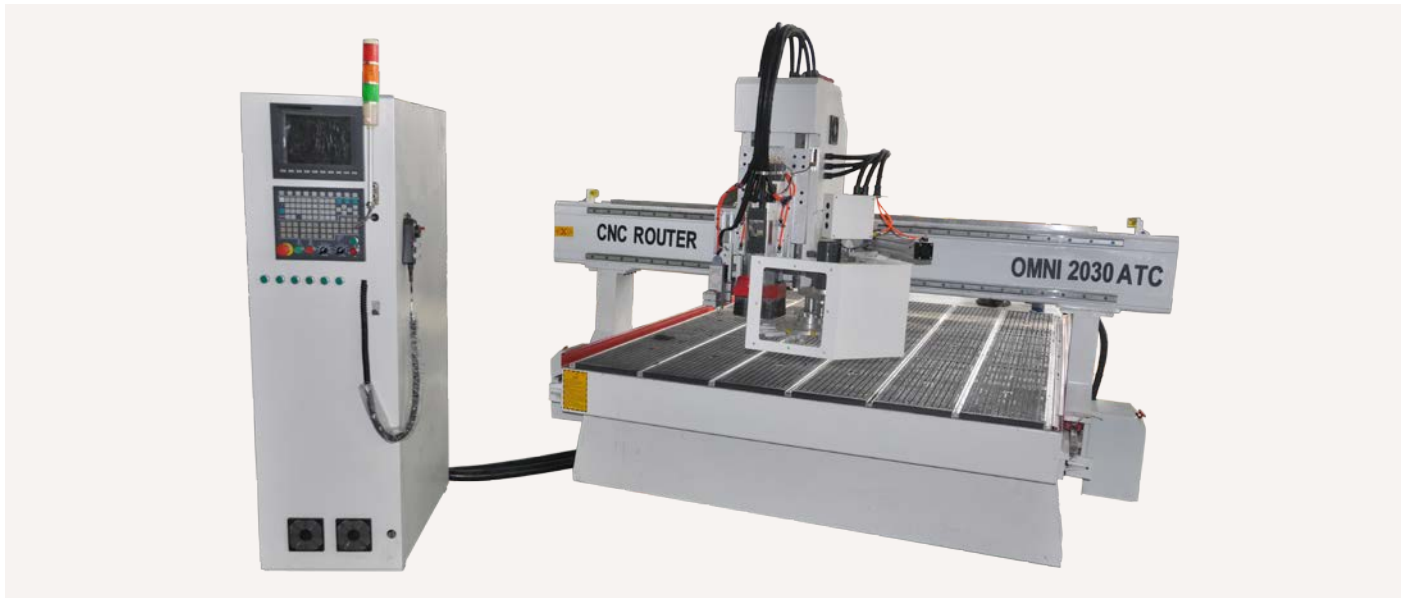


Size	Working Area(XY)	1300*2500mm,1500*3000mm and more
	Working Area(Z)	200mm or others
Accuracy	Positioning Accuracy	0.03mm
	Repeatability	+/- 0.05mm
Control Part	3 Axis Control Motor	AC Servo Motor
	Controller	DSP remote controller/ NC studio
	Interface	USB
Spindle Motor	Output	9KW HSD made in Italy, aircooling, 24000rpm
	Collet	ISO30, BT30
Table Structure	Material Hold Down	Vacuum Combined T slot
Traverse System	Traverse System	Linear Guide on 3 axis, Rack and Pinion on Y, Ballscrew on Z
	Max. Traverse Speed	45m/min
Power Source		380V/3phase; 220V/3phase
Optional	Vacuum pump	Watering or free-oil type
	ATC	Linear Type or Carrousel Type ATC
	Dust Collecting System	Dust collector + Dust collector hood
Command Language		G code & PLT

CNC Knife Cutting Machine

Tangential Knife system is designed to provide accurate cutting of heavier flexible and semi-rigid materials. The Tangential control allows the machine to accurately cut square corners and maintain part accuracy.

Application: Best solution of corrugated paper board, Corrugated Cardboard, fabric, rubber, snowboard and ski base materials, wood veneer for inlay/marquetry artwork, leather, carbon fiber pre-preg laminates for aerospace, military, and automotive components, cardboard for custom packaging, sea materials, films and much more. Besides tangential knife, omni also offer oscillating knife and creasing knife.



ITEM	DESCRIPTION
X,Y-Axis Travel	1300*2500 ,1500*3000, 2000*3000mm
Z-Axis Travel	300mm
Spindle Power	9kw HSD Air-cooling Spindle, 24000rpm
Positioning Accuracy	0.02mm
Repeatability	+/- 0.05mm
Max. Rapid Travel Speed	45m/min
Drive System X, Y and Z axis	Rack and Pinion, Hiwin rail linear bearing
Drive System Z axis	Lead Screw,Hiwin rail linear bearing
Standard Work Surface	aluminium T-Plate Extrusion Combined Bakelite Vacuum Table
Working Voltage	AC380V/50, 3PH ; 220V/60Hz,3PH
Command Language	G Code&M Code
Collet	ER32, Max 20mm
Tool Change	BT30 ISO30, 8/12/24 Positions

4 Axis Linkage CNC Router



ITEM	DESCRIPTION
X,Y-Axis Travel	1200mm*3000mm
Z-Axis Travel	300mm
Spindle Power	7.5KW air-cooling spindle, 24000rpm
Remotion	+/- 0.05mm
Working Speed	20m/min
Max. Rapid Travel Speed	40m/min
Drive System X, Y and Z axis	Ballscrew on Z, Rack& Pinion on X,Y, Linear guide on three axis.
Motor	Servo
Standard Work Surface	T slot table
Working Voltage	220V, 50Hz/380V,60Hz, 3phase
Command Language	G Code, PLT
Collet	ER32
Rotary Device	400mm *3000mm
Controller	DSP; Syntec
Interface	USB

Pneumatic Tool Change CNC Router



Size	Working Area(XY)	1300*2500mm,1500*3000mm and more
	Working Area(Z)	200mm or others
Accuracy	Positioning Accuracy	0.03mm
	Repeatability	+/- 0.05mm
Control Part	3 Axis Control Motor	Stepper Motor
	Controller	DSP remote controller(NC studio I Mach3)
	Interface	USB
Spindle Motor	Output	3kw,watercooling, 24000rpm/4.5kw/6kw or others
	Collet	ER20/ER25
Table Structure	Material Hold Down	Vacuum Combined T slot
Traverse System	Traverse System	Linear Guide on 3 axis, Rack and Pinion on Y, Ballscrew on Z
	Max. Traverse Speed	30m/min
Power Source		380V/3phase; 220V/3phase
Optional	Vacuum pump	Watering or free-oil type
	Dust Collecting System	Dust collector + Dust collector hood
Command Language		G code & PLT

Synchronized Multi-Head CNC Router A Model



Size	Working Area(XY)	1300*2500mm,1500*3000mm and more
	Working Area(Z)	200mm or others
Accuracy	Positioning Accuracy	0.03mm
	Repeatability	+/- 0.05mm
Control Part	3 Axis Control Motor	Stepper Motor
	Controller	DSP remote controller(NC studio I Mach3)
	Interface	USB
Spindle Motor	Output	3kw,watercooling, 24000rpm/4.5kw/6kw or others
	Collet	ER20/ER25
Table Structure	Material Hold Down	Vacuum Combined T slot
Traverse System	Traverse System	Linear Guide on 3 axis, Rack and Pinion on Y, Ballscrew on Z
	Max. Traverse Speed	30m/min
Power Source		380V/3phase; 220V/3phase
Optional	Vacuum pump	Watering or free-oil type
	Dust Collecting System	Dust collector + Dust collector hood
Command Language		G code & PLT

Synchronized Multi-Head CNC Router B Model



Size	Working Area(XY)	1300*2500mm,1500*3000mm and more
	Working Area(Z)	200mm or others
Accuracy	Positioning Accuracy	0.03mm
	Repeatability	+/- 0.05mm
Control Part	3 Axis Control Motor	Stepper Motor
	Controller	DSP remote controller(NC studio I Mach3)
	Interface	USB
Spindle Motor	Output	3kw,watercooling, 24000rpm/4.5kw/6kw or others
	Collet	ER20/ER25
Table Structure	Material Hold Down	Vacuum Combined T slot
Traverse System	Traverse System	Linear Guide on 3 axis, Rack and Pinion on Y, Ballscrew on Z
	Max. Traverse Speed	30m/min
Power Source		380V/3phase; 220V/3phase
Optional	Vacuum pump	Watering or free-oil type
	Dust Collecting System	Dust collector + Dust collector hood
Command Language		G code & PLT

Economical EPS CNC Router

1. Four-row imported ball bearing, widened linear lead rail, self-lubricating block, all these elements caused equal force at all directions while engraving, which ensures the accuracy and strength.
2. OMNI CNC styrofoam cnc router Z axis can be heightened to 700mm-900mm, which is suitable for processing large-scale and super-thick material.
3. Intelligent processing cross-border protection.
4. Diversified control processing speed can be controlled separately, the speed of Idle running and roll setting, greatly improved the quality of processed products and processing efficiency.
5. Die and mold industries:
Sculpture various large non-metallic mold can be particularly suitable automotive foam mold, wooden ship model, wooden model aviation, trains and other wooden mold.
6. Syntec controller: PC Platform Control System; Auto File Saving Function While Power Off; Support MPG; Ethernet, USB Support.



Size	Working Area(XY)	1500*3000mm,2000*4000mm or more
	Working Area(Z)	900mm or more
Accuracy	Positioning Accuracy	±0.09mm
	Repeatability	+/- 0.02mm
Control Part	3 Axis Control Motor	AC Servo Motor
	Controller	Syntec PC platform
	Interface	Ethernet, CF card, USB
Spindle Motor	Output	9kw (12HP), 24000RPM
	Collet	ER32, Max 20mm
Traverse System	Traverse System	Linear Guide on 3 axis, Rack and Pinion on Y, Ballscrew on Z
	Max. Traverse Speed	30m/min
Power Source		380V/3phase; 220V/3phase
Optional	Vacuum pump	Watering or free-oil type
Command Language		G and M code

Industrial EPS CNC Router

1. Four-row imported ball bearing, widened linear lead rail, self-lubricating block, all these elements caused equal force at all directions while engraving, which ensures the accuracy and strength.

2. OMNI CNC styrofoam cnc router Z axis can be heightened to 700mm-900mm, which is suitable for processing large-scale and super-thick material.

3. Intelligent processing cross-border protection.

4. Diversified control processing speed can be controlled separately, the speed of Idle running and roll setting, greatly improved the quality of processed products and processing efficiency.

5. Die and mold industries:

Sculpture various large non-metallic mold can be particularly suitable automotive foam mold, wooden ship model, wooden model aviation, trains and other wooden mold.

6. Syntec controller: PC Platform Control System; Auto File Saving Function While Power Off; Support MPG; Ethernet, USB Support.



Size	Working Area(XY)	2000*4000mm,2500*5000mm or more
	Working Area(Z)	1000mm or more
Accuracy	Positioning Accuracy	±0.1mm
	Repeatability	+/- 0.05mm
Control Part	3 Axis Control Motor	AC Servo Motor
	Controller	Syntec PC platform
	Interface	Ethernet, USB
Spindle Motor	Output	9kw (12HP), 24000RPM
	Collet	ER32, Max 20mm
Traverse System	Traverse System	Linear Guide on 3 axis, Rack and Pinion on Y, Ballscrew on Z
	Max. Traverse Speed	30m/min
Power Source		380V/3phase; 220V/3phase
Optional	Vacuum pump	Watering or free-oil type
Command Language		G and M code

CNC Stone Router

Application Materials :

Artificial stone, Marble, Granite, Ceramic Tile, Tombstone, milestone, Terrazzo, Limestone, Sandstone, Travertine, Quartzite, Slate, grindstone ,Jade, crystal, plexiglass, aluminum composite panel, aluminum block, copper, wood, MDF, hardwood, plywood and so on.

Application Industries :

Suitable for Curb & Paving Stone Forming industries, Stone processing factories, Tombstone processing industries, Advertisement industries for Stone art craft works, Home & Outdoor Product making industries, Architectural decoration industries i.e.

Technical Features :

- 1.The machine adopted 4.5kw water cooling spindle for quickly stone processing or spindle for fast cutting aluminum sheet.
- 2.Japan servo motor and driver ensure that with strong power for cutting and engraving various stone.
- 3.Advanced 3D carve budget and stable broken line enables carving professional speed and precision. Advanced file pretreatment function can correct the error in the files and compatible with the process codes of multiple national and international software.



Size	Working Area(XY)	1300*2500mm or others
	Working Area(Z)	320mm or others
Accuracy	Positioning Accuracy	0.05mm
	Repeatability	+/- 0.05mm
Control Part	3 Axis Control Motor	AC Servo Motor or Stepper Motor
	Controller	NC studio /DSP Handle Controller/ Syntec
	Interface	PCIMC/USB
Spindle Motor	Output	4.5 kw watercooling, 24000rpm or others
	Collet	Er25
Table Structure	Material Hold Down	Clamp
Traverse System	Traverse System	Linear Guide on 3 axis, Rack and Pinion on Y, Ballscrew on Z
	Max. Traverse Speed	32m/min
Power Source		380V/3phase; 220V/3phase
	Mist Cooling System	Cooling Nozzle and Pump
Command Language	Rotary attachment	Any size Rotary Attachment
		G code & PLT

Sign Making CNC Router

Any size of cnc router is acceptable for building. OMNI would suggest you suitable optional spare parts according to the material you process, such as rotary device for cylindrical material processing, coolant tray for metal and glass processing etc.

These models are with ball screw driving on 3 axis, which could cause higher precision processing result. Machines are building with heavy duty and be used in the industries of woodworking, custom millwork, fixtures, channel letters, sign making, educational, model making, prototyping, solid surface production, aerospace, foam packaging, plastic packaging equipment manufacturers, PCB fabricators, engraving, conveyor manufacturers, artistic carvings, name tags, puzzles etc.

OR 1212



OR 3030



OR 6090



OR 1224



OR 4040



MODEL		OR1224	OR1212	OR6090	OR4040	OR3030
Size	Working Area(XY)mm	1200*2400	1200*1200	600*900	400*400	300*300
	Working Area(Z)mm	100				
Accuracy	Positioning Accuracy	0.01				
Control Part	3 Axis Control Motor	Stepper				
	Controller	NC studio /DSP remote controller/MACH3				
	Interface	PCI/MC; USB				
Spindle Motor	Output	2.2KW/1.5KW				0.8KW
	Collet	ER11 or ER16				ER11
Table Structure	Material Hold Down	T slot				PVC table
Traverse System	Traverse System	Round Orbit and Ball screw				
	Max. Traverse Speed	6m/min				
Power Source		220V(110V)/ single phase				
Optional	Dust collector	dust collector				N/A
Command Language		G code				
Software		Type3/ Artcam				

12S CNC Router

OMNI cnc turner series allows machining of parts in the round. The rotary device (rotary attachment), or you may call it 4th axis indexer is like a smart lathe. It makes the rotation of the part the fourth axis of control. This means that you can profile objects in the way you might with a traditional lathe, but you can also do ornamental turning and free-form carving in the round. It mainly designed for designed mainly for staircase stuff, profile statue, furniture & cabinet feet, kitchen island legs, table legs, chair legs, newel posts, sofa leg, Buddha profile, corbel, modillion, baseball bat, crafts etc.



ITEM	DESCRIPTION
Working Size	1200mm*210mm -12 Spindles
Max. load of working bench	1200KG
Working Mode	Servo
Machine Dimension	3360*2000*2200
Spindle Power	2.2kw
Spindle Speed	8000-24000rpm
Repeated Positioning Precision	0.05mm
Max. Traveling Speed	20m/min
Max. Working Speed	15m/min
Gross Weight	2200KG
Voltage	AC380V/50HZ, AC220/60HZ

OMNI 1500A/OMNI 1500B

Most Advanced Material Loading Skill: When the workpiece to machine, machine's 4 jaws could help to find the center. And it only takes 3 seconds for whole material loading material, with higher precision than auto loading. When you process larger diameter vase, you could use auto cutter and adjustable air-cylinder, this improve the workpiece surface finish and last the cutter life time. The center supporter fix workpiece center when it is under the condition of self weight.

1500A



ITEM	DESCRIPTION
Max working dimensions	20-300mm
Machine tools	Spindle or Double machine tools
Max. length	100mm-1500mm
Spindle Max. speed	700-2800r/min
Air pressure	0.6-0.8Mpa
Incoming total power	5.5KW
Power	380V/3P/50HZ
Motor Torque of X, Z, Y axis	4 Nm , 4 Nm , 17 Nm
Working Voltage	OMNI1500A with single tool 220V single phase OMNI1500A with double tool 380V 3 phase, 220V 3 phase.



1500B



ITEM	DESCRIPTION
Working Size	X:1500mm (2000mm is optional)Z: 150mm (200mm is optional)
Working Table	Aluminium cast wholly
X, Z Axis	X rack and pinion, Z ball screw
Moving Speed	≤88000mm/min
Working Speed	≤8000mm/min
Spindle	2.2kw (1.5 or 3kw is optional) 24000rpm
Max Dia. Of Rotary Device	200mm
Max. Processing Material Size	1500mm
Driving Mode	Stepper driving
Working Voltage	220V, Single Phase, 50Hz (110V is optional)
Code Format	G code

Custom Made CNC Router

OMNI undertakes ODM service and also could design the machine as customer's requirement and application. OMNI has rich experience of machine design and building, could offer professional suggestion according to customer's work demand. OMNI's every custom-made product enjoys high comment from customers.



You may process large diameter and long cylindrical stone with heavy duty, or large foam, or other large size mold etc.

1. This cnc router's rotary device is with double chuck at 400mm diameter, 3000mm length. Whole rotary device is with steel welded, motor we adopt big power servo motor. This rotary device configuration could meet your demand of processing heavy duty cylindrical material totally.
2. CNC router is with 500mm Z axis travelling size, could process large size mold, such as wood, foam, plastic material mold.
3. 7KW HSD spindle, such big power spindle is good at of engraving, cutting and drilling on hard material.
4. Servo system is with closed loop, ballscrew on x axis, both ensure the high precision of cnc router.
5. Control system is with windows platform, support USB port.

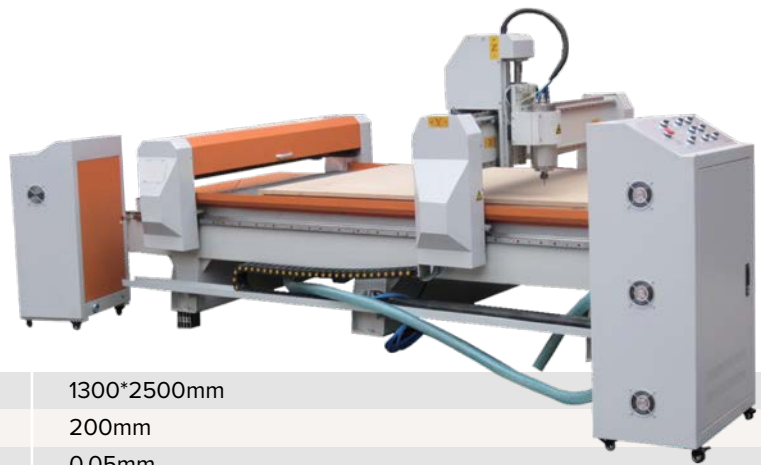


OMNI design multi-function cnc router, which could process cylindrical material and flat material. We place the rotary device behind the working table. And rotary device working dimension could up the whole machine working size. The working table is removable, when you process large diameter foam, taking away table could realize your demand.

All-in-One Machine Series

1. Router-Laser Combined Machine

This machine is used in advertising industry mainly. Processing material usually are PVC, acrylic, wood, marble, MDF etc. Some job requires cnc router and laser machine to process step by step, with this machine, you could pay one machine price and get double value back.



Size	Working Area(XY)	1300*2500mm
	Working Area(Z)	200mm
Accuracy	Positioning Accuracy	0.05mm
Control Part	3 Axis Control Motor	Stepper/Servo
	Controller	NC studio & Laser Controller
Spindle Motor	Output	3KW
	Collet	ER20
Laser Power		80W/100W
Table Structure		T slot or vacuum table
Traverse System	Traverse System	Linear guide on 3 axis, rack and pinion on x and y, ball screw on z
	Max. Traverse Speed	20m/min
Power Source		380V, 50/60HZ
Optional	Dust collector	dust collector
Command Language		G code
Software		Type3/ Artcam/ Corel Draw

2. Router-Plasma Combined Machine

This machine allows you use it as cnc router and cnc plasma cutting machine. The working table is movable, and with coolant tray for cooling metal pieces. And this machine also fits rotary device for cutting metal pipes.



Size	Working Area(XY)	1300*2500mm
	Working Area(Z)	200mm
Accuracy	Positioning Accuracy	0.05mm
Control Part	3 Axis Control Motor	Stepper
	Controller	NC studio & Plasma controller
Spindle Motor	Output	3kw
	Collet	ER20
Plasma Power		60A /100A/120A/200A
Table Structure	Material Hold Down	T slot & Plasma Table
Traverse System	Traverse System	Linear guide on 3 axis, rack and pinion on x and y, ball screw on z
	Max. Traverse Speed	20m/min
Power Source		380V/220V 50/60HZ
Command Language		G code
Software		Type3/ Artcam

CNC Plasma Cutting Machine

OMNI plasma cutting machine could cut even, the shape of wave or other uneven shapes and steep pipe such cylindrical metal.

Capacitance height control

The advanced height linear calibration technology makes the cutting nozzle and cutting board be within 3 ~ 30mm in the automatic height controlling in the capacitance mode;

Simple and convenient linearization calibration

The function of “One key for height calibration” guarantees that in any circumstances, the user only needs to press a key, he can calibrate the absolute height measurement and achieve a linear height measurement.



OMNI THC control system able to

- + Perform corner speed control and height control,
- + Breakpoint restoration, automatic power-back recovery and automatic breakpoint memory,
- + Special short line machining feature based on smooth travel, extensively applicable to metal blanking as well as advertisement and ironwork fabrication, advanced material inclined discharging design. All finished work pieces and fragments slide into tunnel for safe and convenient collection.

Size	Working Area(XY)	1300*2500mm, 1500*3000mm or more
Accuracy	Positioning Accuracy	0.2mm
	Repeatability	+/- 0.3mm
	Control Part	3 Axis Control Motor
Control Part	Controller	Start Shaphon & Torch height controller
	Interface	USB
	Plasma Power	
Table Structure		Plasma table
Traverse System	Traverse System	Linear Guide & Rack & Pinion on XY
	Max. Traverse Speed	30m/min
Power Source		380V/3phase; 220V/3phase
Command Language		G code

Flame & Plasma Cutting Machine

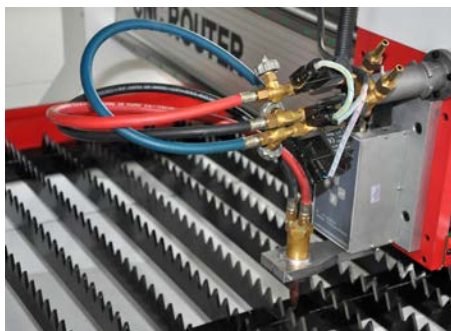
The gantry design for optimum performance in a wide range of processes including flame as well as for Plasma Cutting. OMNI provides choice and options that allow you to configure a gantry system with capacity and options you need for your applications.

It combines powerful performance with multiple torch carriage flexibility to deliver high productivity of ultra accurate shapes such as circles, rectangles, stars, hexagons or any shape your creativity can conquer.

The Gas Control System is designed for efficient and safe gas control.

The preheat control is provided as standard. Cutting flame vent-off valve is provided for safety.

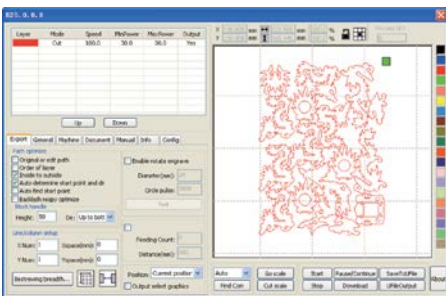
Plasma cutting possible .The machine is plasma ready. Various plasma equipment options are available for individual needs. The machine can also be supplied with Arc Voltage Height Controller.



ITEM	DESCRIPTION
Working Size	1300*2500 or more
Traverse Speed	8000mm/min
Control System	Starfire
Drive System	Rack and Pinion
Drives	Dual Drive Stepper or AC Servo
Material Thickness of Flame	5mm to 70mm
Material Thickness Plasma	0.5mm to 10mm (also 12mm, 15mm ,20mm)
Plasma Compatibility	Yes
Power Input	380V 50Hz or 220V 60Hz

Laser Die Cutting Machine

- + Adopt advanced DSP digital control system, international standard laser power supply, integrated framework style, high stability, high-speed usb2.0 interface output can support off-line working.
- + Transmit files directly from Corel draw, AutoCAD, Photo Shop.
- + Optimization of mechanical and electrical design, processing speed can be up to 1000m/s, low noise.
- + Big power and high stability laser tube, could work over 8000-10000 hours, imported lens and mirror, long life-span, one step cutting can reach 30mm thickness on acrylic.
- + Red Dot Pointer: Provides a visible means of determining engraving location.
- + Air Assist: Remove heat and combustible gases from the cutting surface.
- + Intuitive Control Panel: Speed, power, and more controls directly from the laser.
- + Raster/Vector Color Mapping: Change your engraving speeds and power by using color settings.
- + Waste Collecting Drawer Design, saving your time of cleaning laser machine



Software we offerd

Size	Working Area(XY)	1300*2500mm, 1600*2600mm or more
Speed	Engraving speed	1-60000mm/min
	Cutting speed	1-10000mm/min
Precision	Resolution ratio	<0.01mm
	Location precision	<0.01mm
Cutting Thickness	Max	30mm Acrylic
Water cooling		water-cooling chiller with air compressor
Control Part	3 Axis Control Motor	AC Stepper or Servo Motor
	Controller	OMNI Laser Controller
	Interface	USB
Laser Power	Output	100W, 150W, 200W
Table Structure	Material Hold Down	T blade and honeycomb
Min shaping text		English 1mm*1mm
Power Source		220V , 50Hz / 110V,60Hz
Optional		Fume Extraction Device
Graphic Format		*.plt,*.dst,*.dxf,*.bmp,*.dwg,*.al,*las

Textile Cutting Laser Machine

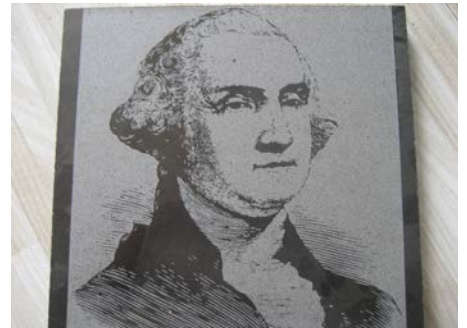
This laser machine is designed for the industry of textile, costume, leather for cutting, decoration etc. Moving table driven by big power motor to move cloth after cutting completed on working table. Fitting with the rolling shaft, you lift the cloth to the shaft, then fix start part of cloth to working table, then could start cutting easily.



Size	Working Area(XY)	1600*1000mm, 1300*2600mm and more
Speed	Engraving speed	1-60000mm/min
	Cutting speed	1-10000mm/min
Precision	Resolution ratio	<0.01mm
	Location precision	<0.01mm
Water cooling		water-cooling chiller with air compressor
Control Part	3 Axis Control Motor	Stepper or AC Servo Motor
	Controller	OMNI Laser Controller
	Interface	USB
Laser Power	Output	100W, 150W, 200W
Table Structure		Textile cutting suited table
Min shaping text		English 1mm*1mm
Power Source		220V , 50Hz / 110V,60Hz
Graphic Format		*.plt,*.dst,*.dxf,*.bmp,*.dwg,*.al,*las

Marble Engraving Laser Machine

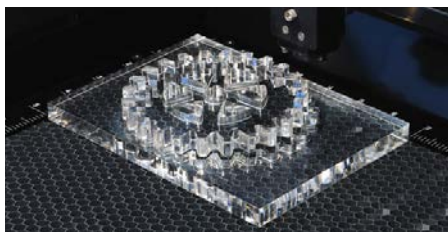
This laser machine is designed for the stone engraving, could used for marble logo, imagine carving, tomb etc. The table is with roll shaft, this design could assist you to lift the marble easily to working table and not damage the table.



Size	Working Area(XY)	1300*2600mm, 1600*2600mm or others
Speed	Engraving speed	1-60000mm/min
	Cutting speed	1-10000mm/min
Precision	Resolution ratio	<0.01mm
	Location precision	<0.01mm
Water cooling		water-cooling chiller with air compressor
Control Part	3 Axis Control Motor	Stepper or AC Servo Motor
	Controller	OMNI Laser Controller
	Interface	USB
Laser Power	Output	100W/80W
Table Structure		Roll shaft
Min shaping text		English 1mm*1mm
Power Source		220V , 50Hz / 110V,60Hz
Graphic Format		*.plt,*.dst,*.dxf,*.bmp,*.dwg,*.al,*.las

Sign Making Laser Machine

- + Configure high power and quality laser tube, can work over 3000-8000 hours.
- + U flash Disk Supported: Read files directly from U-flash disk, you can work even without PC!
- + Red Dot Pointer: Provides a visible means of determining engraving location.
- + Air Assist: Remove heat and combustible gases from the cutting surface.
- + Intuitive Control Panel: Speed, power, and more controls directly from the laser.
- + Raster/Vector Color Mapping: Change your engraving speeds and power by using color settings.
- + With function of restoring from poweroff, continuation function from break point.
- + Transmit files directly from Corel draw and Auto CAD, Photoshop, Tajima directly.
- + The front doors and side pass through doors open to allow large pieces of work to be put into the machine.
- + The Z axis can be lowered to accommodate objects as large as 24" high and can accommodate our optional rotary engraver.
- + Rrary attachment for engraving bottles and round objects is available as an option.

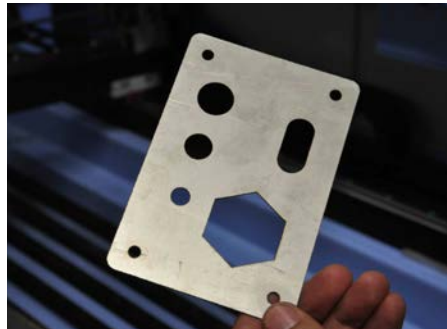
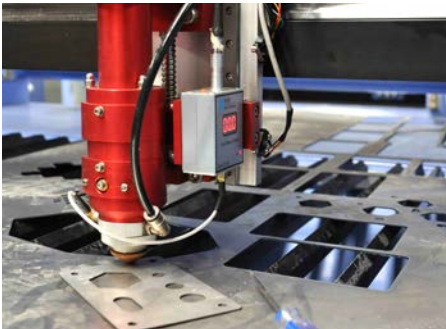


Size	Working Area(XY)mm	1300*1800	1300*900	600*900	400*600
Speed	Engraving speed	1-1500mm/s			
	Cutting speed	1-800mm/s			
Precision	Resolution ratio	<0.01mm			
	Location precision	<0.01mm			
Water cooling		water-cooling chiller			
Control Part	3 Axis Control Motor	Stepper or AC Servo Motor			
	Controller	OMNI Laser Controller			
	Interface	USB			
Laser Power	Output	80W, 100W, 130W			
Table Structure		Blade and honeycomb			
Up-down Range	Working Table Moving	500mm			
Min shaping text		English 1mm*1mm			
Power Source		220V , 50Hz / 110V,60Hz			
Optional		Fume Extraction Device			
Graphic Format		*.plt,*.dst,*.dxf,*.bmp,*.dwg,*.al,*las			

Metal & Nonmetal Laser Cutting Machine

Applicable Materials: Perfectly cutting metal and non-metal plates, such as stainless steel, mild steel, carbon steel, acrylic, wood, MDF, plywood, veneer, plastic, rubber, sponge, paper, cardboard, etc.

Applicable Industries: Suitable for sheet metal processing factories, advertising & sign firms, crafts, modeling, furniture manufacturing companies which are in need of cutting both metal and non-metal materials.



ITEM	DESCRIPTION
Model	OMNI1390/ OMNI1325
Working area (mm)	1300*900/ 1300*2500
Laser power	130W/150W
Laser type	Sealed co2 laser tube
Working platform	Blade platform
Working speed	≤600mm/s
position accuracy	+0.05mm
Graphic format supported	BMP PLT DST AI DXF i.e.
Cooling mode	water-cooling and protection system
Working voltage	AC220 50Hz/ AC110 60Hz
Operating temperature	0~45°C
Operating humidity	5%~95%
Driving motor	Servo/stepper motor
Whole machine size (mm)	1820*1320*1100/ 3400*1830*1065
Exhausting Method	Exhausted by beam,funnel

Fiber Laser Cutting Machine

Applicable Field

Widely used for metalsheet processing, advertising trademark, advertising character, high/low voltage electrical cabinet, mechanism parts, kitchenware, cars, mechanical, metal craftwork, saw blade, electronic parts, eyeglasses, spring, circuit board, kettle, medical microelectronics, hard ware, knives tool, measurement, instrument, etc.

Applicable Material

Stainless steel, carbon steel, alloy steel, spring steel, aluminum, aluminum alloy, galvanized sheet, cincalumzalutite, pickling plate, copper, silver, gold, titanium and other metal sheet, pipes and tubes.



ITEM	DESCRIPTION
Working Area	1300mm*2600mm
Laser Power	300W/ 500W/1000W(option IPG)
Laser Wave Length	1064nm
Working Table	sawtooth
Maximum Idle Running Speed	80m/min
Position Accuracy	±0.05mm/m
Position Speed	20m/min
Minimum Line Width	± 0.1mm
Cutting Thickness	≤6mm
Control System	Professional laser control system--BOCHU
Position Type	red dot
Power Consumption	≤12KW
Working Voltage	AC 380V/50Hz
Auxiliary Gas	oxygen,nitrogen,air
Dimension	3850*2450*1800MM

Optional Accessories



MACH3 MPG



Air compressor



Carrousel tool magazine



Table Pop-up Pins



Rotary device



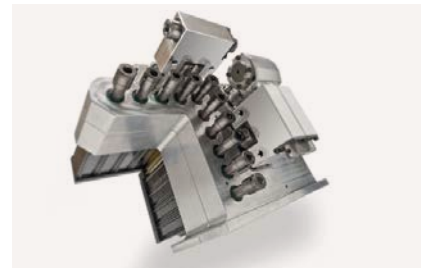
Becker Vacuum Pump



optical tool sensor



3D Scanner



Boring Head



industrial chiller



Fume extraction



Dry Vacuum Pump



Dust Collector



mist sprayer



HSD Spindle

Aggregate Head



2 tool outlets. For door locking, peg-hole drilling, channeling, hinge drilling.



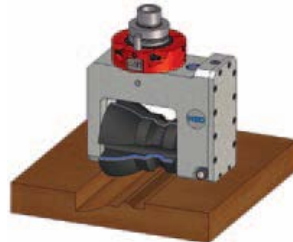
1 blade outlet + ER25 collet. For inclined cutting/milling.



1 blade outlet + ER25 collet. For inclined cutting/milling.



2 boring + 2 milling tool outlets. Ideal for door and window frames.



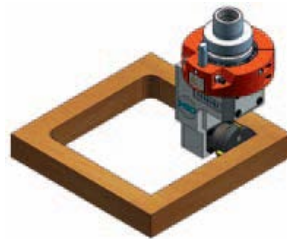
For heavy duty molding or profiling applications. Can be equipped with knives, profile cutters, sawblade



For drilling square holes



1 fixed blade outlet 45°. For edge beveling, grooving, peg-hole drilling. 2 Ausg. Zange.



Corner notching of inside corners. Squaring corners of flat panel.



For machining underneath of panel, avoiding the turning of workpiece.



1 outlet for "Folding" ("V" grooving)



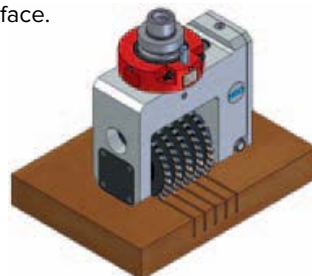
1 Floating outlet for milling, cutting or profiling a workpiece with an uneven surface.



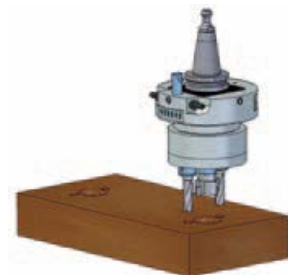
For cutting. Blade 270mm



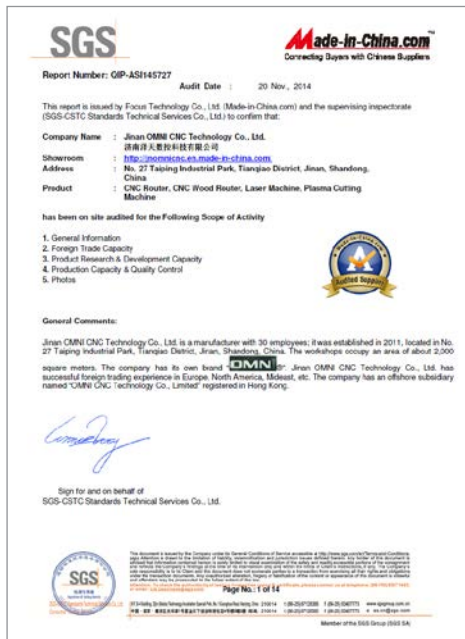
1 tool outlet for milling + 1 for cutting. For peg-hole drilling, channeling, hinge-drilling.



For heavy duty molding or profiling applications. Can be equipped with knives, profile cutters, sawblade.



3 verticals tool outlets. Hinge drilling, line boring applications.





Find us @ Facebook



Find us @ Youtube



Find us @ linkedin

Address: No.27 Industrial Park, Tianqiao, Jinan, Shandong, China 250032
Tel: +86-531-85938856 +86-531-85669100 Fax: +86-531-89003210 www.omni-cnc.com
Product parameters are subject to change without prior notice.