

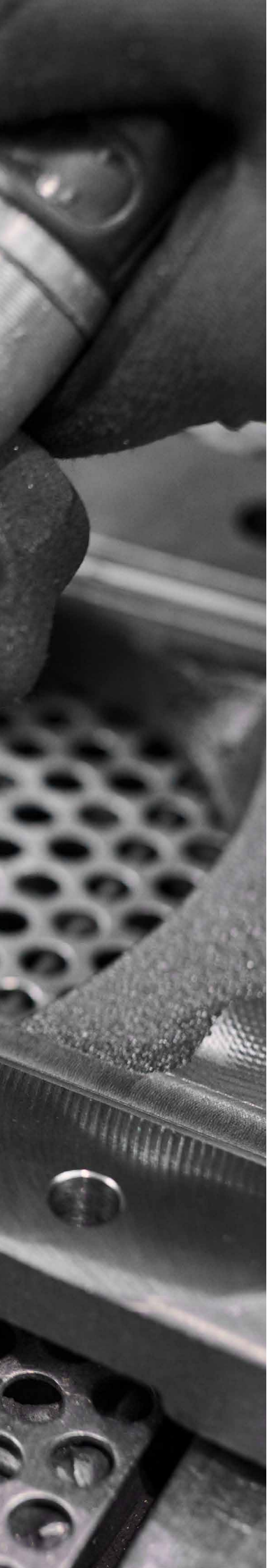
**wey**<sup>®</sup>

# KNIFE GATE VALVES



A SISTAG BRAND





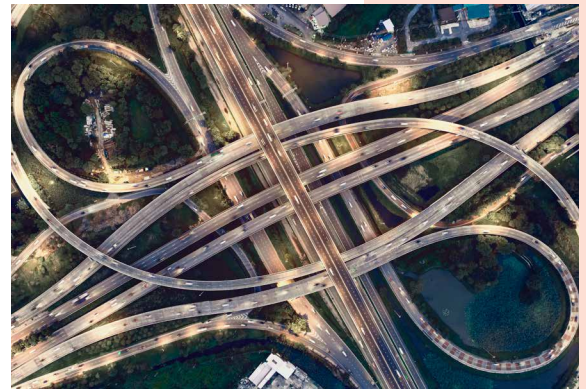
# OUR DEFINITION OF PERFORMANCE



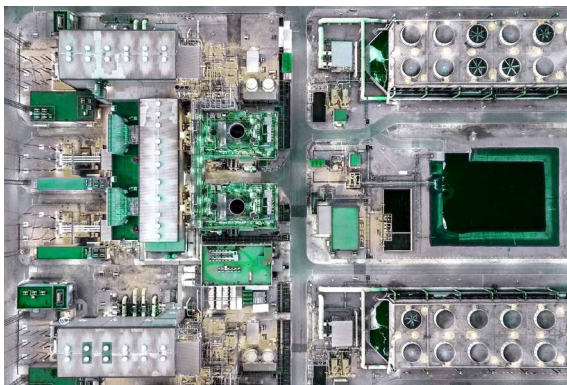
Whether they come in the form of knife gate valves, butterfly valves or water control gates, isolation valves are our expertise. Our experience in engineering, our own production facilities and our excellent manufacturing expertise and know-how in various areas of application make us reliable partners for customers all over the world. This applies equally to all of our product categories. Even under the most severe conditions, Wey valves remain fully functional and bubble-tight over long service lives. We define performance as the highest level of quality, which stands the test of time.

WE'RE AT HOME IN THESE INDUSTRIES

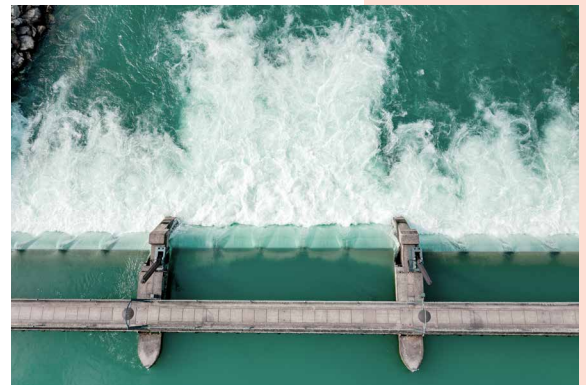
Wherever you use our valves, we're at home in an extremely wide variety of industries. Whether we're working in water treatment, general process industry, mining or power plant construction, we meet the highest demands and can draw on extensive experience in each of the diverse areas of application. We don't think in terms of prefabricated products; instead, we always look for the best possible solution. Because we're not completely satisfied unless you are.



Infrastructure



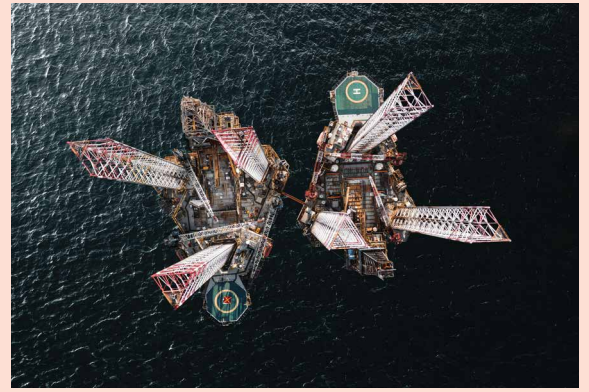
Power Generation



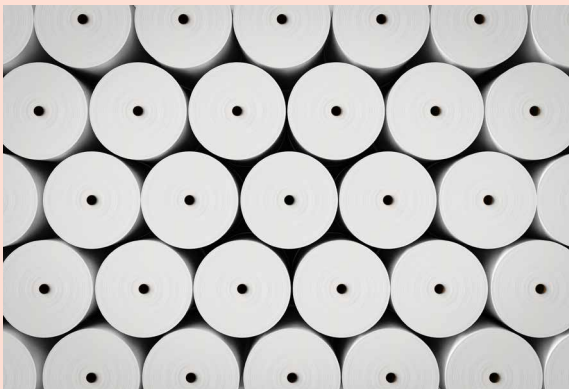
Flood Protection



Cement Industry



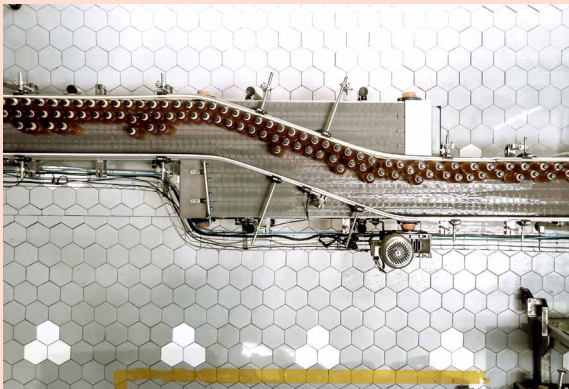
Oil and Gas Production



Pulp and Paper Industry



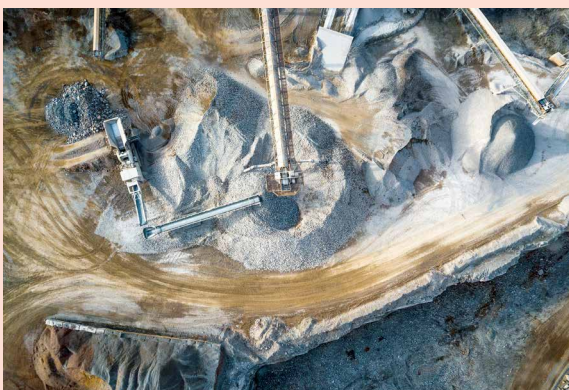
Renewable Energy



Food and Beverage Industry



Water Treatment



Mining



Chemical and Petrochemical Industry

# THE ORIGINAL SINCE 1956

Wey knife gate valves are equipped with the “Original Wey Design”, our unique sealing system. We’ve continuously developed and perfected this innovation, which had a patent registered in 1956. That’s why our sealing system is still the market leader today. Wey knife gate valves can handle a variety of differential pressure scenarios and abrasive and corrosive materials, not to mention extreme temperatures. You can rely on them even under the most demanding conditions. At all times and for a long time.

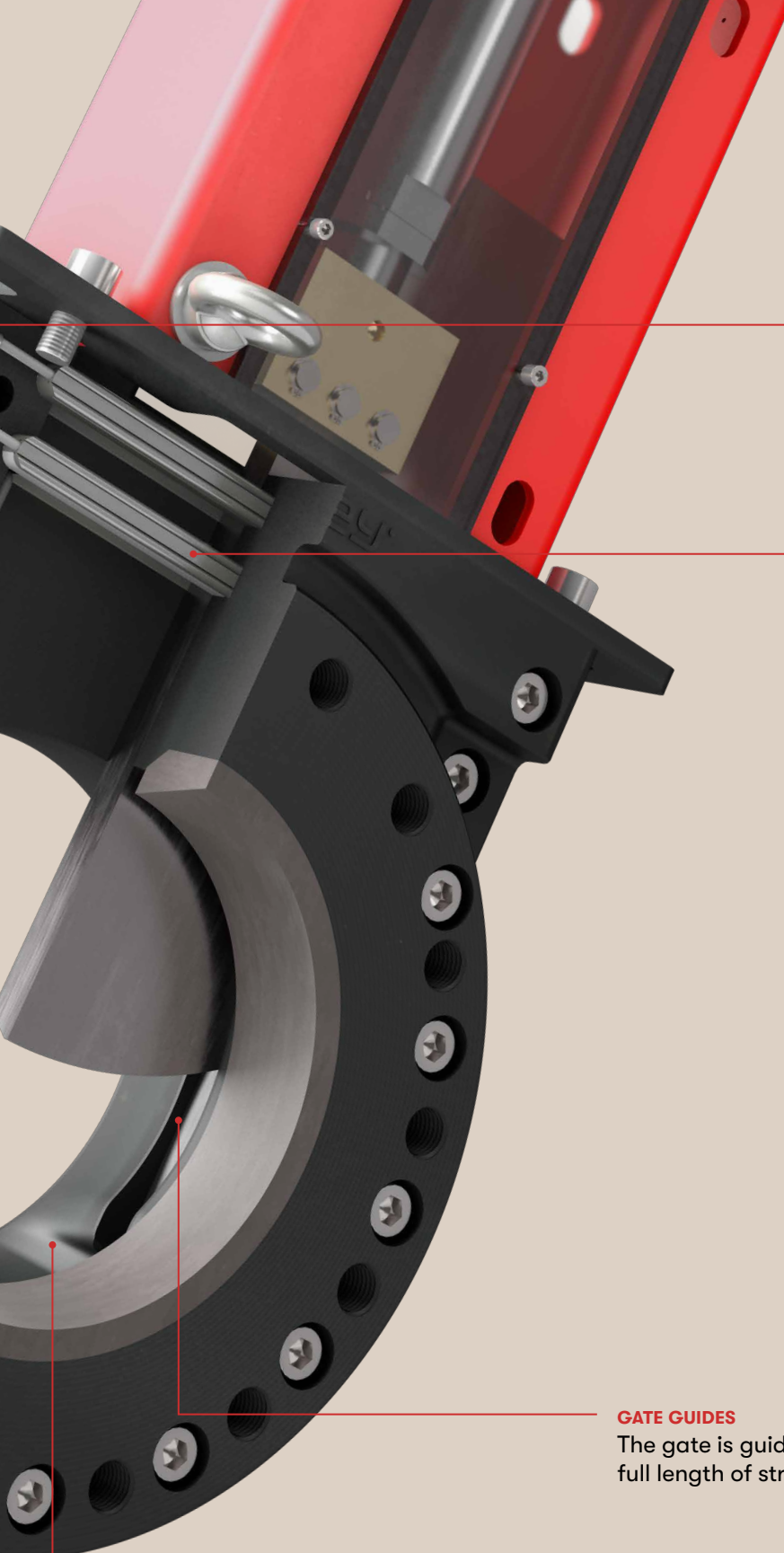
#### ROUND CORD

A mechanically retained round cord seal guarantees zero leakage along the gate edge.

#### METAL SEAT SUPPORT

The gate is also supported by metal in the closed end position.





**REPACKING**

The transverse seal can be repacked at any time and under full pressure using the lateral packing screws.

**TRANSVERSE SEAL**

A unique transverse seal, consisting of a transverse seal profile and sealing compound, ensure that the body is sealed against the atmosphere. The transverse seal design features pressure-supporting scrapers that clean the knife gate, protect the seal profile and thus ensure a longer service life.

**GATE GUIDES**

The gate is guided over the full length of stroke.

**SELF-CLEANING**

The optimized gate geometry means solid deposits are pushed out of the knife gate guides and flushed out in the flushing corners in the body by the flow.

**BODY MATERIALS**

**Stainless steel**  
**Cast iron**  
**Ductile iron**  
**Cast steel**  
**Special materials**

**PRESSURE RATING**

**10 mbar abs. –**  
**100 bar**

**NOMINAL SIZE RANGE**

**DN 50 –**  
**DN 2000**

**DESIGN**

**Knife gate valve**  
**O-Port gate valve**

**FLANGE DRILLING**

**EN1092 PN6,**  
**PN10, PN16,**  
**PN25, PN40,**  
**PN63, PN100**

**ANSI Class 150,**  
**300, 600**

**BS10-D, BS10-E,**  
**AS2129-D,**  
**AS2129-E**

**Special flange**

**BODY STYLE**

**Semi-lug**  
**Lug type**  
**Double flange**  
**Full flange**



FACE TO FACE DIMENSION

# EN 558 Series 16 / 20

## MSS-SP81

## MSS-SP135 Class 150 short / long

## MSS-SP135 Class 300 short / long

## Special face to face dimension

### ACTUATOR OPTIONS



Handwheel



Manual lever



Bevel gear



Pneumatic



Hydraulic



Electrical

## RANGE

The extensive product portfolio consists of various product lines that meet the highest demands of an extremely wide range of industries. Individually configurable and adaptable, they are available in a variety of materials and nominal sizes with different options. So we can find the right solution to overcome any challenge. And we adapt it if necessary.



**VN** SERIES



**VS** SERIES



**VG** SERIES



**VL** SERIES



**VM** SERIES



**MF** SERIES



**MG** SERIES



**MH** SERIES



**W0** SERIES



**W1** SERIES



**W2** SERIES



**W3** SERIES



**DB** SERIES



**DP** SERIES



**HD** SERIES



**HSI** SERIES



**T13** SERIES



**VK** SERIES



See our website for product specifications

# WE BELIEVE SERVICE IS AN ATTITUDE

---

ASSEMBLY

---

COMMISSIONING & TRAINING

---

MAINTENANCE & REPAIR

---

GLOBAL DISTRIBUTION NETWORK

---

We take quality personally – even when it comes to service. Your satisfaction is our top priority. That’s why, for us, customer relationships begin with the first consultation. And we also provide an aftersales service for you. Our global network of distribution partners means there’s always a qualified expert near you. To answer your questions, to provide maintenance and repair services or even to extend or adapt your system. That’s a promise.





**Contact us to  
discuss your  
individual  
application.  
We show  
solutions that  
work.**

Headquarters

**Sistag AG**

Eschenbach (Switzerland)

Tel. +41 41 449 99 44

[rfq@weyvalve.ch](mailto:rfq@weyvalve.ch)

*For inquiries in Switzerland and internationally*

Subsidiaries

**Sistag GmbH**

Muggensturm (Germany)

Tel. +49 7222 7879 790

[verkauf@weyvalve.de](mailto:verkauf@weyvalve.de)

*For inquiries in Germany*

**Wey Valve Inc.**

Shannon (USA)

Tel. +1 662 963 2020

[rfq@weyvalve.com](mailto:rfq@weyvalve.com)

*For inquiries in North America*



