

Store



OFFLINE

MMCA Gallery Art Zone
Seoul(Samcheon-ro) / Gwacheon / Deoksungung
National Museum of Korea Museum Shop
Desing Center Busan Design Store
Palais de Seoul Gallery Shop
Four Seasons Hotel Gift Shop



ONLINE

www.kcdfshop.or.kr
www.mymasters.net
www.diningobject.com
www.atplace.co.kr
www.omaee.co

APP

ARTSY



Certificate



ISO 9001



ISO 14001



Venture
Company

www.zarikorea.com

Laws of life,
looking for reasons of life in nature



ZARI SERVICES

ZARI creates products with a new Korean style.
Home accessories made with traditional materials. Designer products
with modernized traditional patterns. We present our customers with a
modernized space with Korean emotions harmonized with modern life.

Tel : 031 287 0754 / Fax : 031 899 9160
Add. : Biz 3Team GWDC 2311 Yonggu-daero, Giheung-gu,
Yongin-si, Gyeonggi-do(16692), Korea
www.zarikorea.com / E-mail: zari@zarikorea.com

www.zarikorea.com



Laws of life, looking
for reasons of life in nature

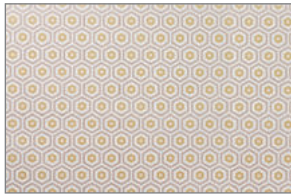
Change the modern life[®] ZARI

ZARI PATTERNS

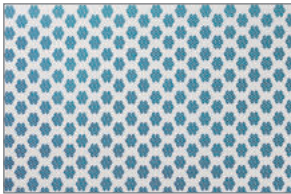
Simplicity...but it will never be shabby. Brilliant... nevertheless, not extravagant.
We, ZARI is including design into our goods and art works that restrained korean beauty



01. Flower
The flowers of the window grille of Hanok are patterned in this motif. Modernized with warm grey and cool grey color



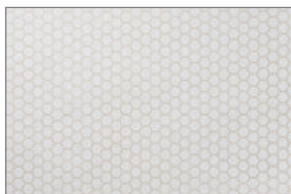
02. Fence
Gyeongbok Place Fence is patterned in this motif. Modernized with warm grey and yellow green color.



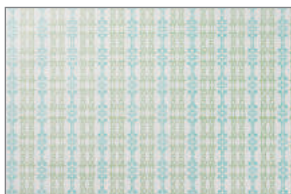
03. Neunghwa
The motif comes from the existing Neunghwa which has been widely used. Modernized with indigo blue color



04. Modern flower(Gold)
The border of the flowers the window grille of Hanok are patterned in this motif. Modernized using gold color.



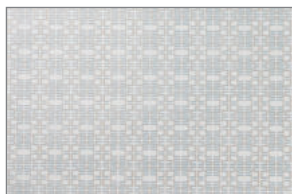
05. Modern flower(Silver)
The border of the flowers the window grille of Hanok are patterned in this motif. Modernized using silver color.



06. Korean alphabet (Korea)
In this motif, Korean alphabet(Korea) are reversed(up/down/left/right) and then patterned. It symbolizes the colors evoking the colors of Goreyo Celadon in a morden way



07. Korean alphabet(Seoul)
In this motif, Korean alphabet(Seoul) are reversed(up/down/left/right) and then patterned. Blue and brown color symbolized the history of Han River and Hanyang, the lifeline of Seoul



08. Korean alphabet(Dokdo)
In this motif, Korean alphabet(Dokdo) are reversed(up/down/left/right) and then patterned. The blue sea of Dokdo is symbolized using modern colors.



09. Bottle
The silhouette of Bottle are patterned using brush touchlines. Blue and red color of Taegeukgi are symbolized using modern colors.



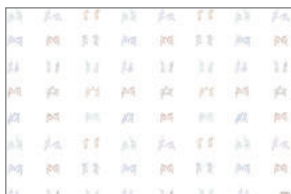
10. Buncheong
The rough feel of Buncheong is patterned using brush touchlines. Various colors of Buncheong that can be seen in cultural properties are simplified.



11. Moon Jar
Moon Jar that represents the Korean sentiment is patterned in this motif. Black and white shades are used for modernization.



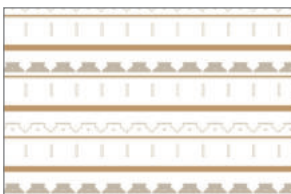
12. Horo-Jeonan
The holes made in the wall or door for soldiers to shoot arrows or guns hiding their bodies are called "Jeonan" The hole that looks like a dipper is called Horo-jeonan.



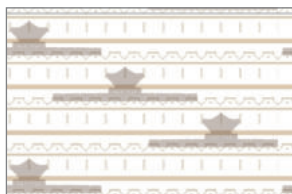
13. Muyeobotongji
The flowers of the window grille of Hanok are patterned in this motif. Modernized with warm grey and cool grey color



14. Yeongrong-Dahm
It has the beautiful look of wadam. Yeongrong-Dahm, which has the meaning of the wall with flower patterns that sounds as if beads ring, is used as design motif.



15. Cheolyeo-Jang
The uneven shape of the iron fence installed on top of wall is called Cheolyeo-jang. It is patterned in this motif.



16. Bukporu
Bukporu is one of the five batteries in Hwaseong. Bukpru located between Jangnammun and Hwaseomun is patterned in this motif.



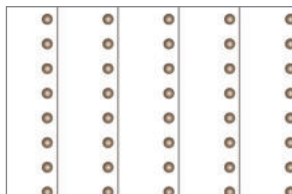
17. Samingeommun
Marital art moves that explain the marital art and combat skills in the book of combat strategy compiled by the order of King Jeongjo are used as design motif



18. Hwaseong Rampart Gate(1)
The curved lines of Hwaseong Rampart are used as design motif. Repeated patterns are used.



19. Hwaseong Rampart Gate(2)
The curved lines of Hwaseong Rampart are reversed and repeated as design motif.



20. Cheolyeop-mun
Iron plate of the gate studded with Gwangjujeong to block arrows and bullets are used as design motif.

ZARI PRODUCTS

We draw inspiration from nature and tradition, reinterpret it from a modern viewpoint.
Intercommunication of man with nature, the harmony between tradition and modernity.

01. Daily Item Improved Hanji-Disposable Mat



- All the daily products of ZARI is made of improved non-fluorescent Hanji.
- Products of modern Korean sentiment.
- Ideal for conceptual meetings and parties.
- Disposable items. It is easy to arrange the table.

- A. Table Mat.L : Main Dish / 380x260(16sh)
B. Table Mat.M : Dessert, Refreshment / 250x250(16sh)
C. Spoon rest / 100x200(16sh)
D. Coaster / 100x100(16sh)
E. Book Style Table Mat. L: Main Dish / 380x260/ 40Ps(10Type x 4Ps)
F. Book Style Table Mat. M: Dessert / 250x250/ 40Ps(10Type x 4Ps)
G. Book Style Spoon rest / 100x200/ 40Ps(10Type x 4Ps)
H. Book Style Coaster / 100x100/ 40Ps(10Type x 4Ps)

02. Classic Item Improved lacquered Han-ji Mat

- ZARI's classic version of lacquered products.
- The front and back are sprayed with the improved lacquer 3 times to ensure waterproofing in everyday life.
- Please use if for formal table setting.

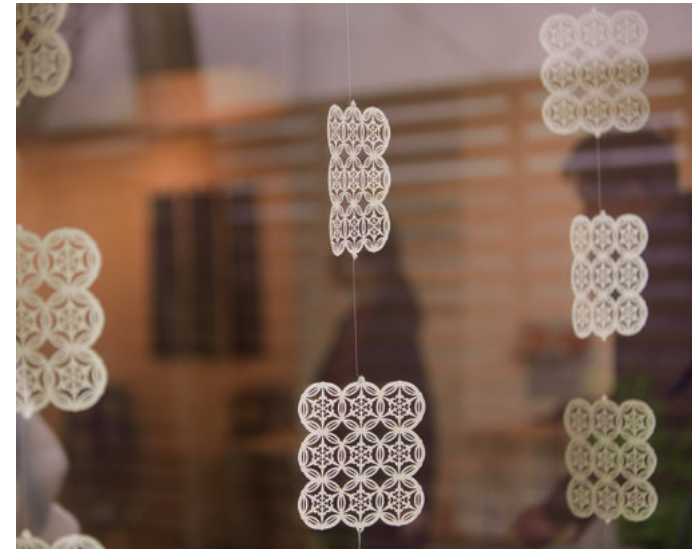
- A. Table Mat.L : Main Dish
Ellipse 420x380x2
Pebble shape 400x380x2
B. Coaster
Packing 150x120
Circle 100x100, Pebble shape 100x115
C. Coaster set
Packing 130x125x30
Circle 100x100(4ea 1set), Pebble shape 100x115(4ea 1set)



ZARI PRODUCTS

We wish to make the space(ZARI) with our design goods which can increase the value of life.

03. Life & Living Soybean oil Hanji- Garland / Han-Ji Wall paper



- If it is hanged by the window shined by the sun, it will bring the comfort that can be felt in Hanok.
- Made of floor Hanji spayed with bean oil
- Flower pattern among the grille patterns of Hanok.

- A. 3th-Flower patterns Garland
150x180 (130x150 H:600)
B. 5th-Flower patterns Garland
150x150, 135x135(H:1,000)
C. Order Design/ Korean Modern Patterns
1Rool(18M) W:900

04. Stationery Improved Hanji- Wrapper

- Wrapping paper of Korean sentiment.
- Made of improved non-fluorescent Hanji.
- Make your desired gift packaging using a variety of packed products

- A. Wrapper
Roll ø25 H:520(Wrapper 780x520)
B. Wrapper.L-Package
380x270 (Wrapper 780x520-8sh 1set)
C. Wrapper.M-Package
390x280 (Wrapper 390x530-8sh+Hanji string 2Color 2M 1set)
D. Book Style Wrapper
390x280(Wrapper 780x520-12Ps 11Patterns+1Solid)
E. Traditional Han-ji pop-up Card
110x120
F. Traditional Han-ji Flower Post Card
200x100
G. Traditional Han-ji stamp Post Card
100x145

