



KNEE

SHOULDER

ELBOW

No surgery / No down time

Arthritis

Muscle pain

Inflammation

Anti-pain | Bio-stimulation | Anti-inflammation | Deep effective action

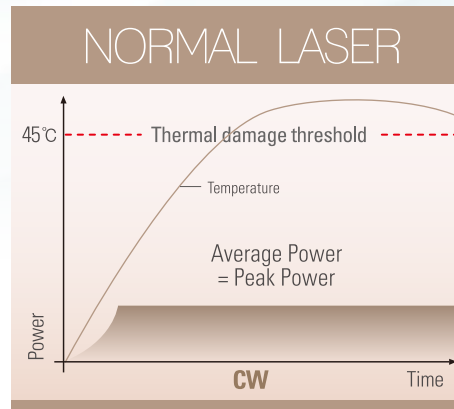
Hilthera4.0

Hilthera4.0

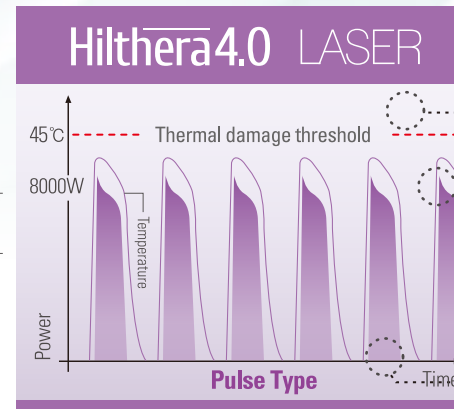
Go for the new revolution in the name of the innovation of laser technology!

Experience !! - High-Peak Power **8000W**

The Evolution of
Non-surgical Treatment
for Spine, Joints,
and Pain



VS



01/ **SAFE**

It's safe by reducing the danger of burns **due to enough TRT**.
It's able to deliver rich energy to the target in the skin safely than other machines because it is able to treat target accumulating thermal energy only in targeted center.

02/ **INTENSE**

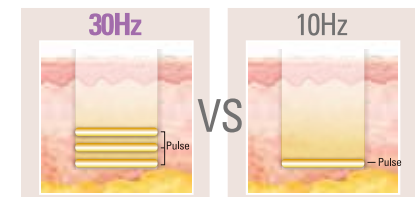
Emits **high-peak power (8000W)** for a short on time.
Provides enough thermal relaxation time for the tissue due to a long off time.
Delivers high energy to deep area that can not be reached in CW or CW on-off mode.

03/ **DEEP**

The reason that Hilthera beam is able to reach to deep point is vertical energy transfer by using High peak power of **short pulse duration**.

04/ **SPEED**

Prompt treatment by **30Hz beam speed**.
Even energy by high density of beam



Newly updated procedure
of treatment

Anti-pain

Bio-stimulation

Anti-inflammation

Deep effective action

When carrying out the experiments in the same condition,
1064nm of Nd-YAG come into the deeper area
in the skin than others.

Two functions in one handpiece

NORMAL TYPE



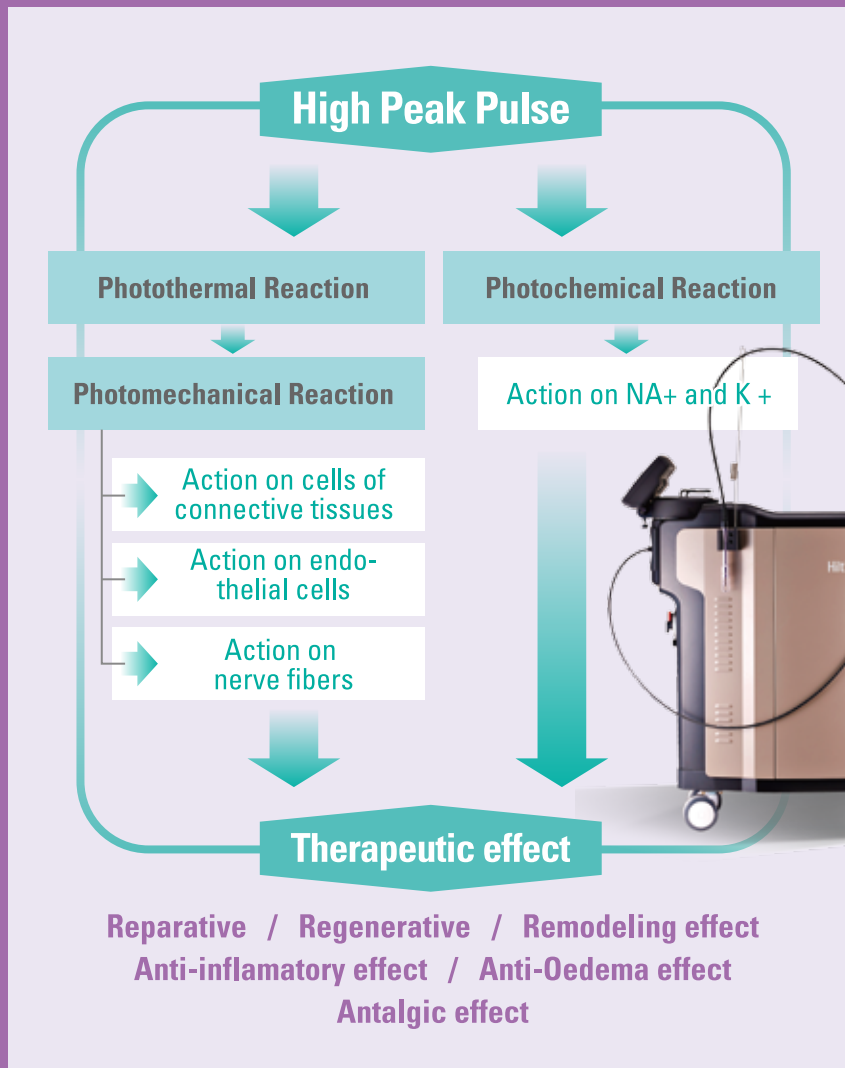
Tendinopathies / Muscle lesions
Distortions and dislocations
Post-traumatic edemas
Synovitis and bursitis
Osteochondral lesions
Osteoarthritis
Degenerative chondropathies
Fibromyalgia syndrome

SPECIAL TYPE



Gonarthrosis,
Osteoarthritis,
Degenerative-
chondropathies





INDICATION

SHOULDER
CALCIFIC TENDINITIS
ROTATOR CUFF
FROZEN SHOULDER

ELBOW
GOLF

ELBOW
TENNIS

HIP
HIP BURSITIS

SPINE
CERVICAL-LUMBAR
SPINE PAIN

KNEE
PATELLAR TENDINITIS
CARTILAGE REGENERATION

FOOT
ACHILLES TENDINITIS
PLANTAR FASCIITIS

Photomechanical Effect /

The laser wavelength of HILThera4.0 delivers high energy into targeted tissue during short time of irradiation and then the targeted tissue is expanded and lymph drainage is stimulated, it helps to reabsorb unnecessary liquid which is accumulated in human body.

A physical vibration is transmitted to the tissue and stimulates the drainage of lymph. As a result of it, the swelling (edema) is reduced and inflammatory molecules are removed very quickly.

Photochemical Effect /

Photochemical effect raises pH (acidic in pathological conditions) of tissue to physiological level and increases the production of ATP, it affects body homeostasis (keeping equilibrium of body temperature and chemical ingredient).

It prevents calcium from being released and removes the main inflammatory factors.

Laser makes it easy to readjust physiological concentrations of Na+ and K+ on either side of cell membrane. (Speeding up metabolism)

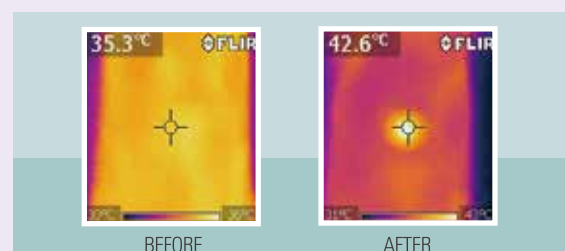
Photothermal Effect /

It delivers thermal energy into the inside of tissue.

It promotes blood circulation in damaged tissue and increases nutrient.

It reduces the swelling in a very short time.

Treatment temperature change



Clinical strength of Hilthera4.0

Short treatment time and long-lasting effect

Analgesic effect with only one treatment and quick recovery

Simultaneous solution for pathological caused and related symptom

Deep and effective action

Treatment on wide area

Neochondrogenic effect

Anti-inflammation



Hilthera4.0

Specification

Laser Medium	Nd:YAG
Peak Power	8.0kW
Energy per pulse	MAX 1200 mJ
Average Power	30W
Fulence	2980mJ/cm ²
Dimensions	900mm x 400mm x 850mm
Weight	110kg
Electrical Power	220V 50/60Hz

Conveniences

Touch Screen Interface

Save Mode (User Mode)

Auto Power Correction by Pre-pumping

Scanning Tempo Music

