

800 / 1100

SMARTFOLD ULTRA

FOLDER-GLUERS



www.dgm-global.com

ADGM CARTON
CONVERTING
EQUIPMENT

SMARTFOLD ULTRA Folder-gluer

800 / 1100

EQUIPPED WITH ADVANCED STATE OF THE ART TECHNOLOGIES FOR FAST JOB CHANGEOVER.

SMARTFOLD ULTRA folder gluer models are equipped with advanced state of the art technologies for fast job changeover, especially focussed on multi-type work capabilities with medium-long to shorter run lengths in mind. Motorized carriers, full and sectional job/memory recall, new "universal multi-function section" with integrated "bump & turn" allows to turn cartons 90° and its alignment. Pre-breakers device by outer belts on both sides. New servo drives technologies, extra length crash lock bottom section. Extra folding & closing section with collapsible central carrier, able to produce complex carton structures, straight line, lock bottom, 4 & 6 corner cartons and more. DGM has been committed to offer the industry an affordable, cost effective and complete state of the art solution for the folding and gluing needs of today's converter and market demands, one of the best cost/value/productivity equipment combination to be offered to the industry.

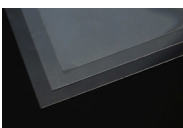


MODELS

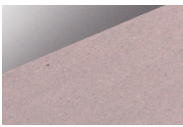
SMARTFOLD ULTRA 800 PC / 1100 PC
Suitable for straight-line, crash-lock bottom & double wall boxes.

SMARTFOLD ULTRA 800 SL / 1100 SL
Suitable for straight-line, crash-lock bottom, double wall, 4 & 6 - corner boxes.

MATERIALS



Plastic

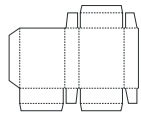


Carton board

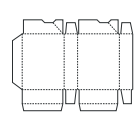


Corrugated board

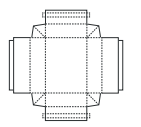
BOXES



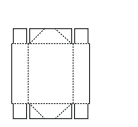
Straight line



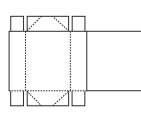
Lock - bottom box



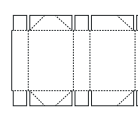
Double - wall Box



4 corner Box



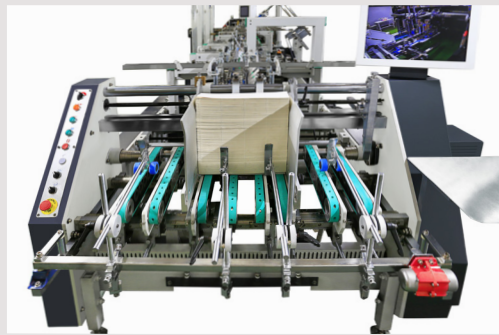
4 corner Box with Lid



6 - corner box



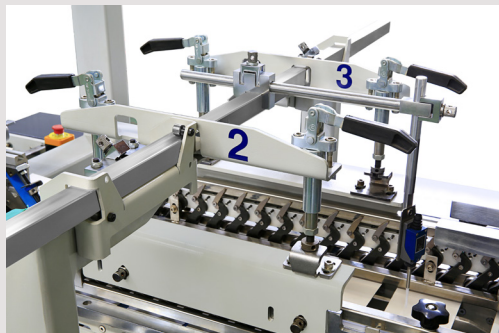
COMPONENTS FOR ALL MODELS



1

Feeder section

- Driven independently by servo motor.
- Friction feeder with 6/8 untimed feeding belts, 30 mm width.
- Electronic pile vibrator.
- Lateral feed gates fully adjustable to the width of the blank.
- Three adjustable front feed knives with carton spacing carriers (bogies).



2

Side register section

- Driven independently by servo motor.
- Independent section with an unparallel lower carrier that guides the box to a parallel handrail that allows a perfect blank alignment.



3

Pre-folding section

- Driven independently by servo motor.
- Left hand glue flap pre-folder up to 180°.
- Third crease line pre-folder up to 135°.
- 1st and 3rd crease openers.
- Three upper and lower carriers along full section.



4

Multi-function section

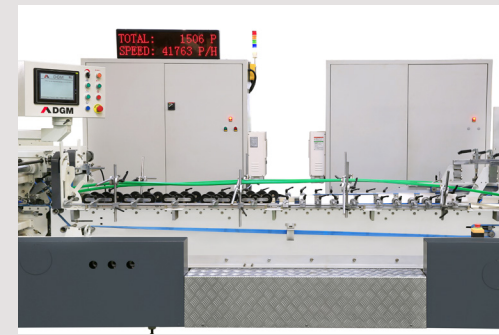
- Driven independently by servo motor.
- Extra length crash lock bottom section.
- 3 sets of upper and lower transfer carriers along the section.
- Complete set of folding hooks and helixes to fold the front flaps of the blank smooth and accurately.
- Set of accessories for "B" lock bottom.
- Integrated "bump & turn" allows to turn cartons 90° and its alignment.
- Pre-breakers device by outer belts on both sides.



5

Gluing unit

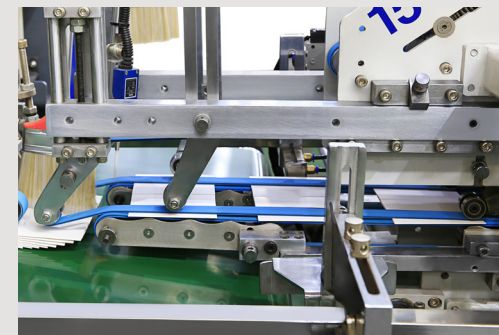
- One lower (left side) gluing tank.
- Easy to remove and clean.
- Standard 3 & 5 mm width glue disc.
- Optional electronic upper gluing system by guns, upon request.



6

Folding and closing section

- Driven independently by servo motor.
- Extra length folding & closing section, 4.5 meters long.
- Collapsible central carrier by pneumatic system, saving time for set-up and allows to run small boxes.
- Lifting central upper carrier by pneumatic system.
- Smooth and accurate folding of 2nd and 4th crease.
- Outer folding belts adjustable up to 180° with variable speed.
- Two upper & two lower carriers with 25 mm lower and 30 mm outer belts.
- Width-wise adjustable heavy-duty compression rollers (optional).
- Detectors of proximity between carriers to avoid damages when approaching.



7

Trombone section

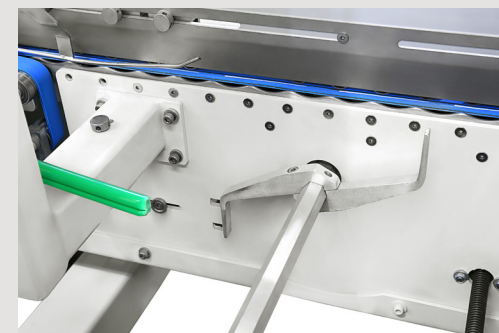
- Driven independently by servo motor.
- Pneumatic box ejector, for quality control without interrupting the flow of boxes.
- Upper and lower drive mechanism for length adjustment.
- Equipped with automatic belt tension-adjusting system.
- Continuous and automatic box collection mechanism that ensures a neat trans-fer to the Press section, guaranteeing a well aligned flow.
- Electronic counter and "Kicker" for marking batches.
- Squaring device for crashlock bottom boxes.



8

Press section

- Manual and Automatic speed variation in coordination with a photocell.
- Upper section moves back and forward, allowing for different box length.
- 5.5 meters total length with 3.1 meters effective pressure length.
- Pneumatic pressure adjustment to avoid marks.



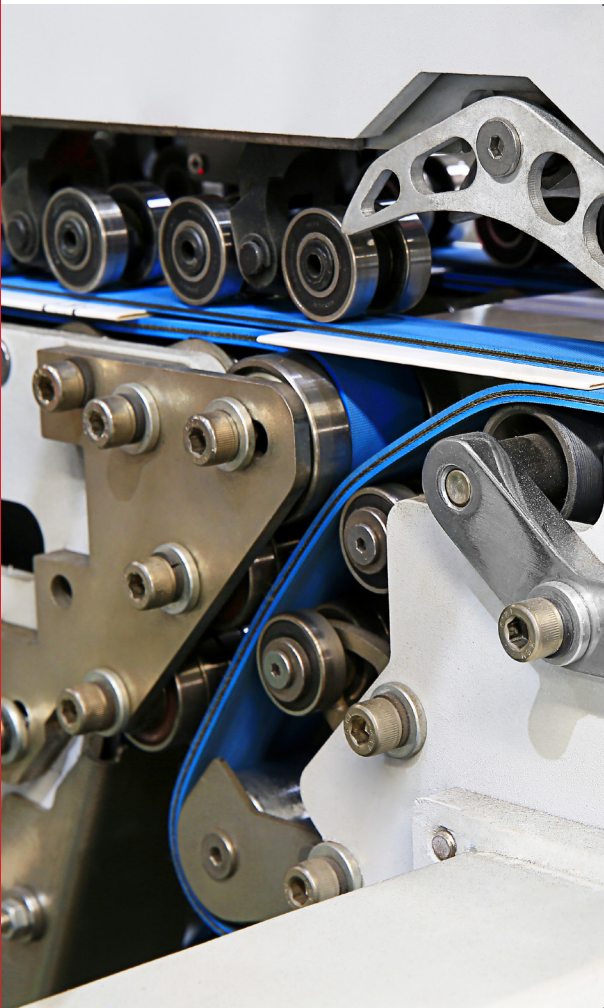
9

4 & 6 corner device

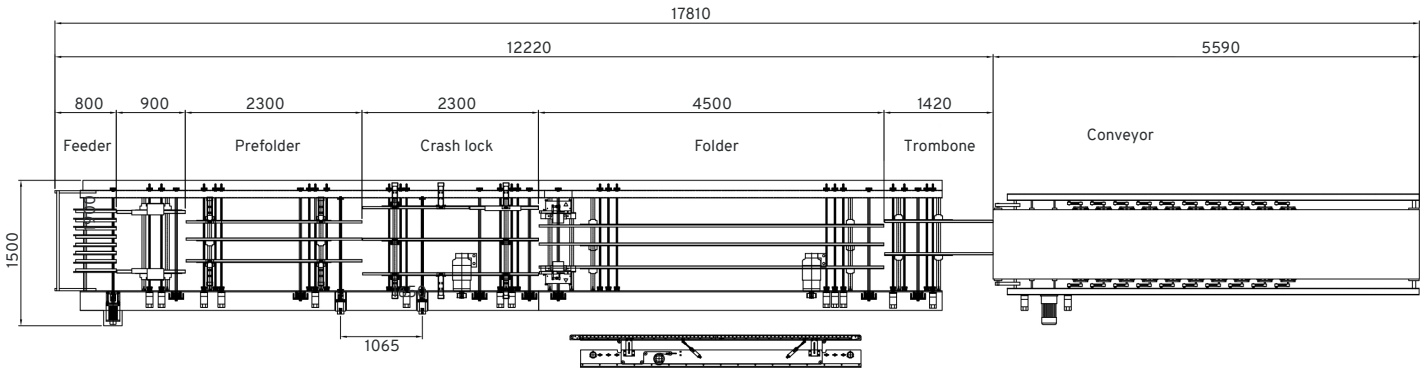
- Motorized and untimed electronic back folding system with intelligent servo motor technology. It allows accurate folding of all back flaps by mean of hooks installed in two independent shafts controlled electronically.

SMARTFOLD ULTRA

800 / 1100



SCHEME SMARTFOLD ULTRA 1100



SPECIFICATIONS

SMARTFOLD ULTRA

800

1100

Processed materials

Carton board max.

800 g/m²

800 g/m²

Corrugated flute type

N, E & F

N, E & F

Capability

Speed max.

500 m/min

500 m/min

Inching speed

20 m/min

20 m/min

Thickness of folded box max.

20 mm

20 mm

Blank width

800 mm

1100 mm

Dimensions & weight

PC

SL

PC

SL

Length

17.81 m 17.81 m

17.81 m 17.81 m

Width

1.6 m 1.6 m

1.9 m 1.9 m

Height

1.9 m 1.9 m

1.9 m 1.9 m

Net Weight

11.3 Ton 11.5 Ton

11.7 Ton 11.9 Ton

Installation

Electrical connected load

66 kW 66 kW

66 kW 66 kW

Compressed air

6 bar 6 bar

6 bar 6 bar

Air compressor capacity

10 m³/h 10 m³/h

10 m³/h 10 m³/h

Air tank capacity

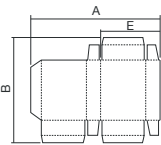
60 L 60 L

60 L 60 L

BOXES

800

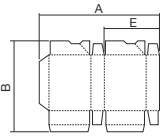
1100



Straight
line

A: 150 - 800 mm
B: 100 - 1100 mm
E: 70 - 390 mm

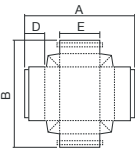
A: 195 - 1100 mm
B: 100 - 1200 mm
E: 90 - 540 mm



Lock -
bottom

A: 150 - 800 mm
B: 110 - 1100 mm
E: 70 - 390 mm

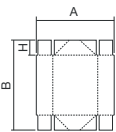
A: 195 - 1100 mm
B: 110 - 1200 mm
E: 90 - 540 mm



Double -
wall

A: 200 - 800 mm
B: 100 - 1100 mm
D: 30 - 150 mm
E: 80 - 680 mm

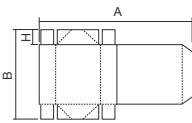
A: 240 - 1100 mm
B: 100 - 1200 mm
D: 30 - 150 mm
E: 100 - 960 mm



4 - corner

A: 140 - 800 mm
B: 140 - 1100 mm
H: 25 - 150 mm

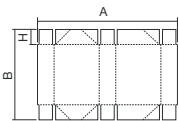
A: 160 - 1100 mm
B: 140 - 1200 mm
H: 25 - 150 mm



4 - corner
with Lid

A: 250 - 800 mm
B: 140 - 1000 mm
H: 25 - 150 mm

A: 270 - 1100 mm
B: 140 - 1100 mm
H: 25 - 150 mm



6 - corner

A: 250 - 800 mm
B: 140 - 1000 mm
H: 25 - 150 mm

A: 270 - 1100 mm
B: 140 - 1100 mm
H: 25 - 150 mm

www.dgm-global.com

info@dgm-global.com

TEL (86) 0752-277 37 80
FAX (86) 0752-277 37 78

HuiHuan Industrial Area, Huizhou City,
Guangdong Province, China

Huizhou De Gang Machinery Co., Ltd

