

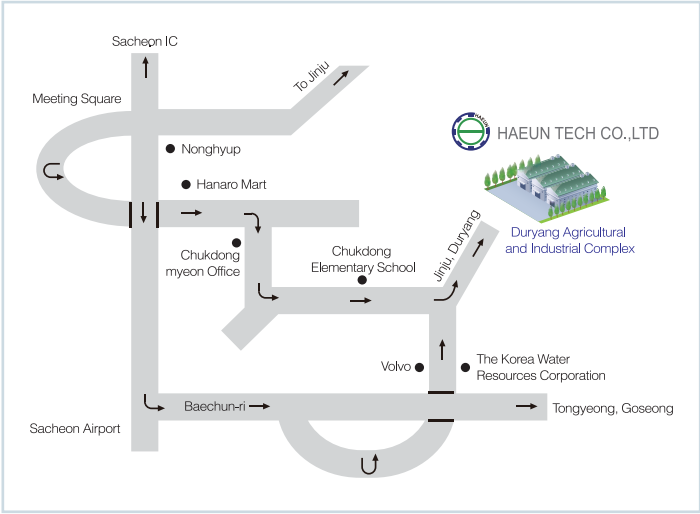
A machinery parts specialized manufacturer which promotes the best quality,

# HAEUN TECH



## HAEUN TECH CO., LTD.

#1659, duryang-ri, Sacheon-eup, Sacheon-city,  
Gyeongsangnam-do, Korea  
TEL : +82-55-853-8799 FAX : +82-55-853-8796  
E-mail : haeun8796@nate.com  
www.haeuntech.co.kr



Printed in Oct. 2012



HAEUN TECH CO., LTD.



## COMPANY INTROUDUCION

### Management policy

Select customers after enhancing competence

### Company motto

Be autonomous and cooperative

### Quality objective

Entire elimination of the defects with the same elements



### Items

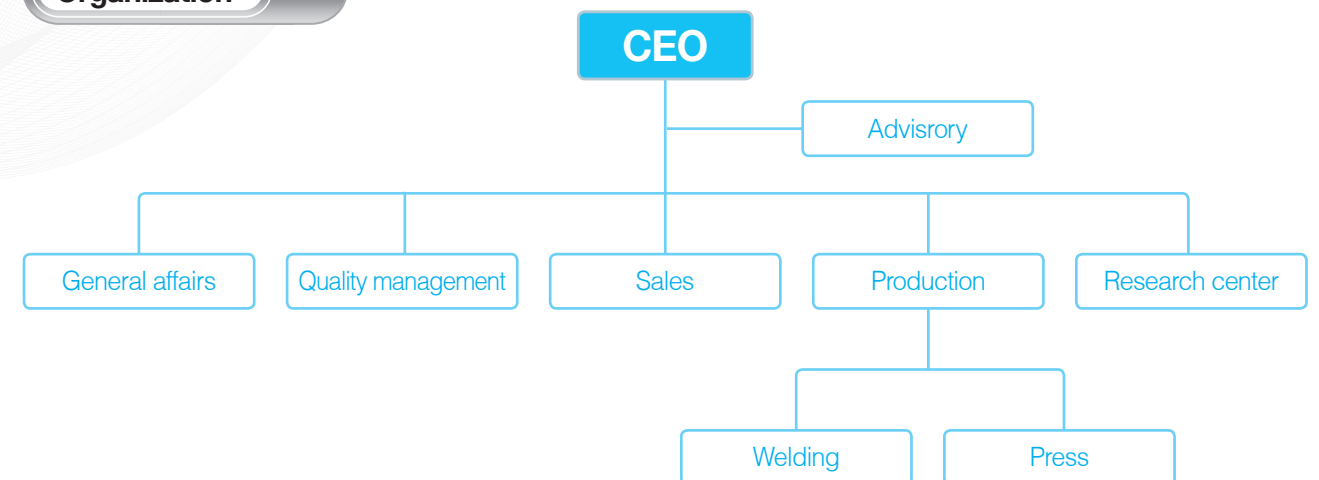
For all kinds of sheet metal and welding products: manufacture of automotive parts, aircraft structures, MCT processed materials, pontoons of traffic lights and mounting kit, accessories of traffic lights, molds and welded fixtures

## COMPANY HISTORY

- 2004. 12 HAEUN TECH established
- 2006. 1 ISO 9001 certified: No. JK-15442
- 2006. 8 Built the second factory: Powder coating factory
- 2006. 10 ISO 14001 certified: No. JEK-21786
- 2007. 2 Approved as Venture Business No. 20100201460
- 2008. 1 Relocated the first factory to Sacheon-si for expansion
- 2009. 9 Increased capital
- 2009. 11 TS 16949 certified No. IATF20670
- 2009. 12 Built Technology Lab
- 2010. 3 Started to produce aircraft jigs and structures
- 2010. 5 Registered to Public Procurement Service
- 2010. 7 Designated as Alternative military service
- 2011. 11 Applied for registration of trademark, 'Haeun Band', plate base for mounting traffic light: Application No.: 40-2011-0061035
- 2012. 4 Designated as INNOBIZ: No. 121101-00582
- 2012. 5 Applied for a patent for how to manufacture handles: Application No. 10-2012-0056652
- 2012. 7 Applied for a patent for engine mount for commercial vehicles: Application No. 10-2012-0076474
- 2012. 9 Selected for 500 Desired Giant Small Businesses: Nationwide 256 companies selected



## Organization



## CERTIFICATES



Certificate of INNOBIZ



Certificate of Venture Business



Certificate of Company Lab



Certificate of Trade Business ID No.



TS16949



ISO9001



ISO 14001



Certificate of Application for a Patent for Engine Mount



Certificate of Application for a patent for manufacture of handles



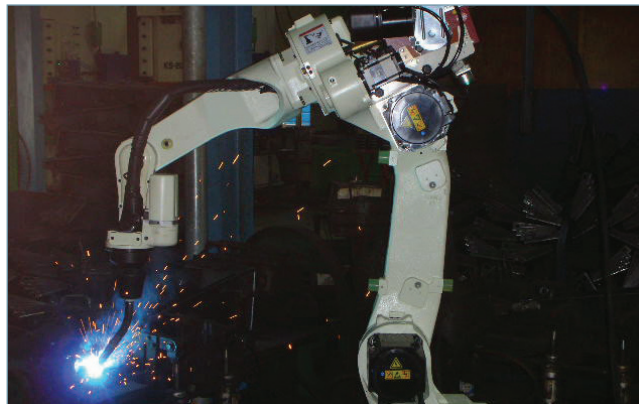
Certificate of Application of Trade Mark, Haeun Band



### Technology Status



It is total machine parts manufacturing instrument producing various car components, flight jigs and structures with the main item being the engine mount for the commercial vehicles of Fuso in Japan. It is fully equipped with various press facilities and advanced facilities for plate product manufacturing such as mold planning and repair and it virtually achieves a 0% welding defect rate with robot welding in the welding factory.



### Our manufacturing advantages

- All equipments used in the manufacture of plate products are equipped 100% - shearing machine, various press, robot welding etc.
- All the possessed equipments are fully equipped. Possible to perform simultaneous work for processed products attached to plate products – CNC shelf, laser etc.
- Welding is possible for all CO2, Mig, Tig, Argon and spot welding
- It is located within 2km of molding and heat processing companies
- Self-manufacture of molding and welding jig takes place at the head office
- Iron plate (Forging) ▶ Shearing System (Cutting System) ▶ Plating System (Processing Equipment) ▶ Robot Welder ▶ After-treatment (Shot and paint)

### System Status

No	System name	Standard	Quantity
1	Mechanical Press	500 TON	1
2	Mechanical Press	250 TON	1
3	Mechanical Press	200 TON	1
4	Mechanical Press	200 TON	1
5	Mechanical Press	150 TON	1
6	Press Feed Set	6T×650×2000	2
7	Power Press	60 TON	1
8	Power Press	1.5 TON	1
9	Milling Machine	Complex Machine 5	1
10	Milling Machine	Complex Machine 2	1
11	CO <sup>2</sup> Welder	500 KW	7
12	Argon Welder	350 KW	2
13	Robot Welder	350 KW	1
14	SPOT Welder	750 KW	4
15	SPOT Welder Feed Set	750 KW	2
16	Direct Drilling Machine	1 HP	2
17	4-Vessel Shearing Machine	2 HP	1
18	6-Vessel Bending Machine	5 HP	1
19	Ranks	2 HP	1
20	Table Drilling Machine	1 HP	3
21	Handle Bending Machine	30 KW	1
22	Hoist Crane	3 TON	2
23	Hoist Crane	1 TON	1
24	Hoist Crane	500 KG	2
25	Motor Forklift	3 TON	2
26	Radial Drilling Machine	GRD1200	1



## Production Site

### Press Dept.

By using a press machine with various specifications, various plates (3T~16T) are processed with bending, piercing and braking to produce plate products.



### Welding Dept.

By using welding machine such as CO<sup>2</sup>, Mig, Tig, Argon, Robot and SPOT, the plate product produced in press machine is welded and joined.

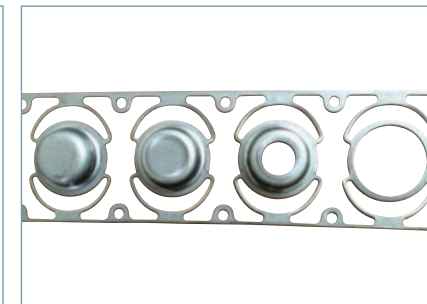


## Products



**Engine Mount (Large commercial truck)**

The component supports the engine between car and engine and minimizes vibration and noise transferred by the engine at the same time (export to Japan Fuso)



**GMD2180 INNER PLATE**

It is bearing cover used for the wheel of M300 SPARK model, small car of GM, and it covers bearing by connecting with axis of the wheel and receives tension from the bearing's axis.



**Automotive reducer parts**



**Aircraft jigs and structures**

Jigs and structures required to manufacture combat plans, civil aircrafts, Helicopters



**Pontoons of traffic lights**



**Mounting kit & accessories of traffic lights**

The band is fixed to traffic lights by being attached to the control device of foreign and domestic countries' traffic lights MCT processed products for signal bracket ship.



**Vessel MCT processed products**



**Other frames**

