



**VALCO MELTON**

**Adhesive Dispensing & Quality Assurance Systems**

## **Nonwoven Solutions**

English Edition

## Sophisticated, Intelligent Systems

Valco Melton has developed a brand New Generation of systems specially designed to help Hygiene Disposable Products Manufacturers and OEM's to reduce both Initial Capital Investment and Converting Costs. Adhesive Melters, Slot Coating Dies and Spray Applicators, as well as quality assurance equipment like Flow Meters or remote metering systems like our Pumping Stations have been redesigned and merged into what has become to be the "Smart Series" family.

### THE SMART SOLUTION

## THE NEW GENERATION OF ADHESIVE MELTERS

The SmartMelt Series is the newest generation of PLC based melting and adhesive dispensing units that Valco Melton has developed. The most important concept behind this innovation is its ability to lower adhesive consumption.



The digital IO interface connector, as well as the external communication protocols are fully compatible, so no technical support is needed at the time parts are replaced. All electronic components used in SmartMelt units are commercially available.

Achieve an accurate control of the glue applied at full production speed to optimize and save adhesive. The SmartMelt Series guarantees efficiency by reducing rejects during the acceleration ramp.



The best control of the applied glue at full production speed optimizes and saves adhesive with an easy and intuitive interface and pump speed based also on grams per product, grams per square meter, or through volumetric closed-loop controls.



A compact design increases available floorspace around the production line typically occupied by hot melt equipment. Motors are vertically stacked in pairs instead of the usual battery setup.

KEEP IT SIMPLE

# The Smart Architecture

The most intelligent part of this solution is that it can be upgraded with additional SmartBoxes as needed. The SmartMelt Series offers four different kits that can be easily added to the tank at a later time. No additional technical support is needed.



**Smart Drive**

Up to 2 Smart Drive compact boxes with 2 frequency drives and 4 inputs for pressure reading to add extra pump control and process diagnostics



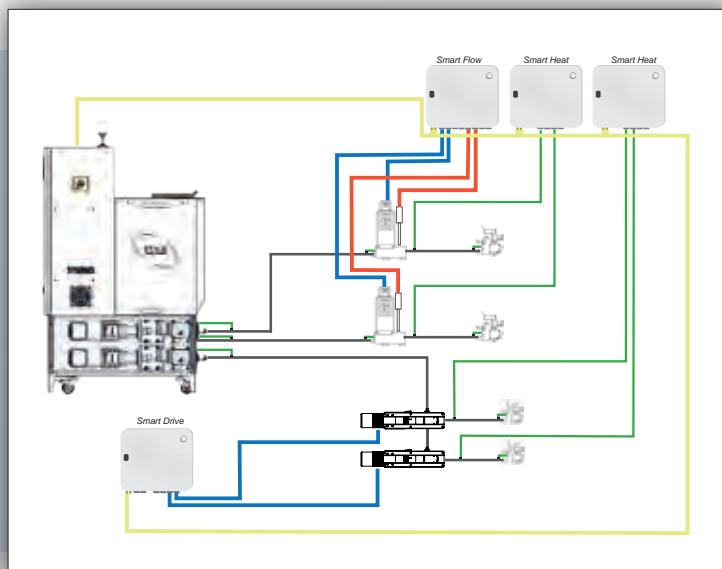
**Smart Flow**

Up to 2 Smart Flow compact boxes, each with up to 4 flow meters and 4 pressure transducers



**Smart Heat**

Up to 2 Smart Heat compact boxes for extra temperature channels with 4 hose/head connectors



## EB PUMPING STATIONS



EB remote metering stations provide a flexible solution for multiple application points with added consistency and pattern stability. By linking multiple stations together without using extra hoses, numerous pump output streams can be combined into one to essentially reduce the amount of added parts.

## FLOW CONTROL

FlexFlow controllers feature a programmable mapping of input and output signals to control different production lines with independent product specifications. This intelligent system continuously monitors the amount of adhesive dispensed and compares it to the application's set point; When the actual flow rate deviates from the set point, the FlexFlow system automatically adjusts the pump speed.





# Applicators: For precision converting

At Valco Melton, you will find the application solution you are looking for. For optimal precise gluing and applicator configuration, Valco Melton supplies a wide range of heads with multiple options.

## MITO Series

### Slot Coat & Non-Contact Applicator in One with Independent Module Configuration Options

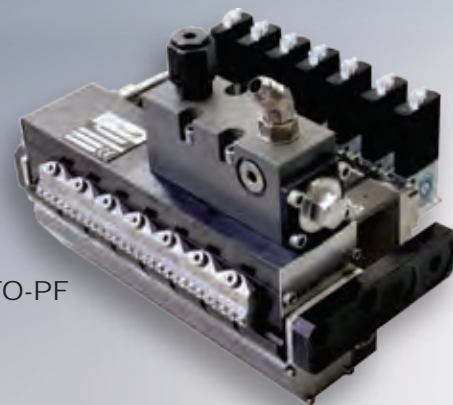
Valco Melton's New MITO Series features the ultimate range of nonwoven specific, hot melt applicators.

MITO Series Applicators are designed to achieve each and every adhesive pattern required in the industry. A simple nozzle change system allows for fast and effortless pattern changes including swirl, melt-blown, elastic and slot coat configurations. What's more, MITO Applicators are engineered to allow simultaneous application of different adhesive patterns like slot coat and spray on the same substrate with only one applicator head.

MITO Series Applicators are available in metering or pressure-fed configurations. Application width ranges vary from 25mm to 500mm. Each item in this series includes the new MI-III Modules for a longer life and performs at 12,000 cycles/min.

The MITO-M Applicator with metering capabilities is the most sophisticated product in the series. It incorporates an exclusive, small pump on each module. This ensures even cross-web adhesive distribution and immediate hydraulic response, reducing waste during machine ramp-up. Each module is independent from each other, and can work with different flow, pressure, and grammage configurations.

The MITO-M Applicators also feature one resettable pressure relief valve per module, where you can individually select each module into recirculation mode.

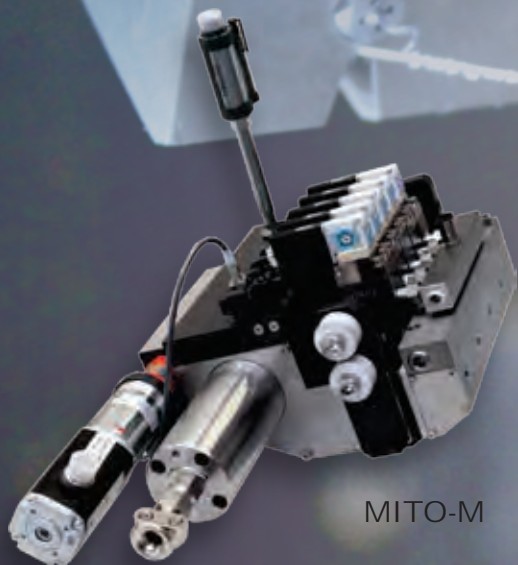


MITO-PF

MITO Series Applicators feature an optional patent-pending, state-of-the-art, in-line viscosity controller.

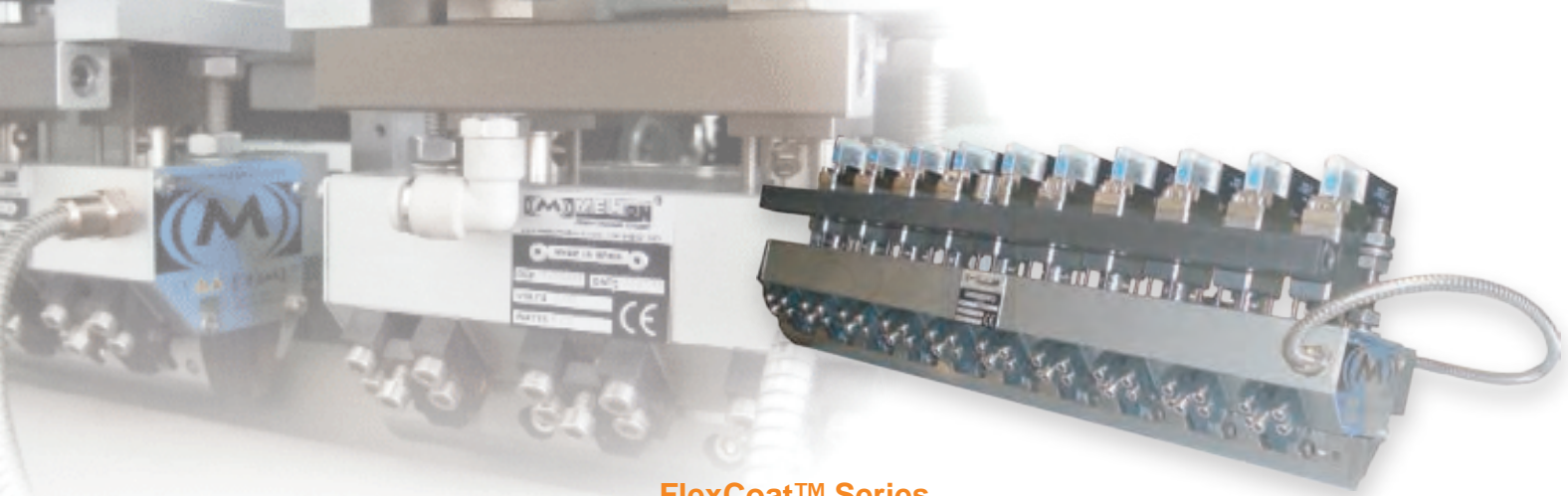
This innovative technology allows the system to keep constant adhesive viscosity, stabilizing the manufacturing process. Viscosity changes have a negative impact on the adhesive flow and pattern positioning. This results in material waste and downtime associated with machine stops.

By achieving a stabilized adhesive viscosity, MITO Applicators minimize "bleedthroughs", pattern defects and intermittent application adhesive missplacements



MITO-M

**The MITO Series Hot Melt  
Applicators optionally feature an integrated  
pressure transducer with in-line viscosity  
control technology**

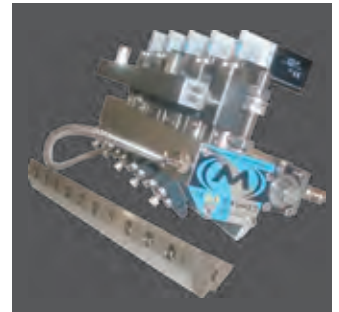
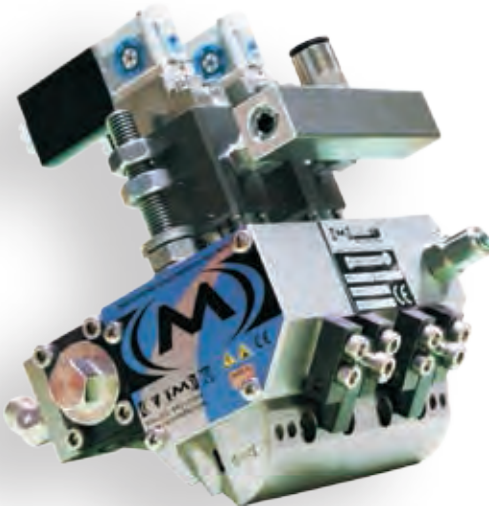


## FlexCoat™ Series

**Configurable Applicator for Continuous or Intermittent Coatings up to 500 m/min and 1000 mm Lamination Widths**

A configurable applicator for continuous or intermittent coatings permits faster product changes while minimizing spare parts stock.

A new adjustable blade is an effective low cost solution that allows lamination in both directions and can be easily removed for ultra-fast shim changes.



## FlexSpray™ Series

**Spray Applicators with Integrated Air Heater**

A cost-effective solution that provides a highly accurate adhesive application and reduces initial investment in additional spare parts inventory.

Valco Melton's FlexSpray Series Applicators feature a new air heating system that increases thermal efficiency and reduces cabling needs.

All applicators are compatible with Swirl CP, BAT25, and BAT22 modules, encompassing a variety of applications, including swirl, mini-swirl, strand coat and curtain coating.





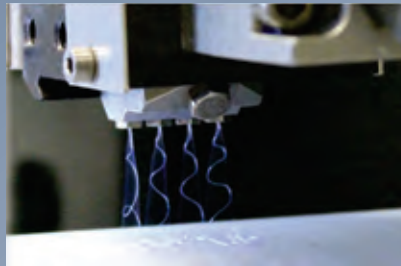
# Applications:

Compact and modular designs for applicators, interchangeable modules and nozzles provide one of the largest ranges for hot melt adhesive patterns available to the industry.

Designed specifically for the nonwovens industry, this innovative module's technology will work on continuous or intermittent applications with minimal requirements for spare parts stock.

Whatever your specific requirements may be, Valco Melton's proven product collection can provide the configuration needed.

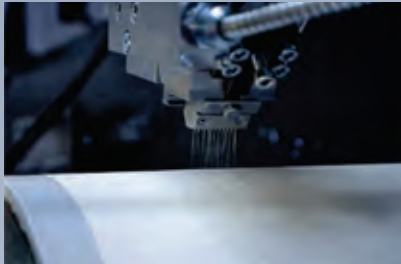
## BAT25 L Application



## Slot Coat Application



## BAT25 M Application



## BAT V Contact Application



## Swirl Application



## BAT 22 Application



# Solutions

## Perfume Dispensing Systems

Achieve savings of up to 80% against traditional perfume or lotion dispensers with Valco Melton's Air-Less Perfume Dispensing Technologies.

Spray application is substituted by a small dot dispensed on each pad. This eliminates the risk of perfume being atomized to the environment and ensures that every product receives a precise and equal dose, even during machine startup or at variable line speeds.



300 Series Valve



DD1 Pump

MCP4  
Pattern Control



## Flow Metering Systems

Gain unparalleled control of all technical processes in the nonwovens industry.

Valco Melton's Flow Measurement devices are sensors that measure volume rate based on a calibrated gear principle. Designed to work with hot melt adhesives up to 210°C.

The process is monitored from a Control Cabinet, which provides different options to integrate and communicate with the parent machine.



VM's FlexFlow Meter

## Compatible Spare Parts

An unlimited amount of accessories and market standard compatible parts are offered to the customer looking for additional opportunities to enhance production requirements and product success.



## World Headquarters

**USA, OH, Cincinnati** | Tel: +1.513.874.6550  
info@valcomelton.com

### America Manufacturing, Sales & Service Centers

**Canada**, Vancouver, B.C.  
**ClearVision Technologies**  
Tel: +1.604.998.4012  
canada@valcomelton.com

**USA West Coast, CA**, Petaluma  
**GMS-Vansco**  
Tel: +1.707.285.3392  
inquiry@gmsvansco.com

**Mexico**, Mexico D.F.  
Tel: +52.55.6278.1727  
mexico@valcomelton.com



### South, Southeast, West & Central Asia Manufacturing, Sales & Service Centers

**Turkey**, Istanbul | Tel: +90 212 327 99 71  
turkey@valcomelton.com

**India**, Bangalore | Tel: +91.80.28378111  
india@valcomelton.com

**UAE**, Sharjah | Tel: +971.521305960  
uae@valcomelton.com

**Singapore**, Singapore | Tel: +65 850 95355  
singapore@valcomelton.com



### Europe Manufacturing, Sales & Service Centers

**Spain**, Navarra, Orcoyen | Tel: +34.948.321.580  
spain@valcomelton.com

**France**, Valence | Tel: +33 (0) 4.75.78.13.73  
france@valcomelton.com

**Italy**, Brescia | Tel: +39.030.2732544  
italy@valcomelton.com

**Italy**, Brescia | **ERO s.l.r** | Tel: +39 030 2731503  
info@ero-glucers.com

**Benelux**, The Netherlands | Tel: +31.252.673673  
benelux@valcomelton.com

**Hungary**, Budapest | Tel: +36.1.214.4705  
hungary@valcomelton.com

**UK**, England, Telford | Tel: +44.1952.677911  
uk@valcomelton.com

**Germany**, Düsseldorf | Tel: +49.211.984.798-0  
germany@valcomelton.com

**Poland**, Siechnice | Tel: +48 71 889 04 50  
poland@valcomelton.com

Direct Sales Centers ●  
Distributors Worldwide ●

### East Asia Sales & Service Centers

**China**, Shanghai | china@valcomelton.com

**China**, Xiamen | Tel: +86.592.591.7854

Fax: +86.592.591.7834 | china@valcomelton.com

To find the office  
nearest you, visit:  
<http://delivr.com/2q54d>  
or snap a picture of  
this QR Code



valcomelton.com