



2L Bio Co., Ltd.

LUNAQ

01 Advantages of 2L Bio's products

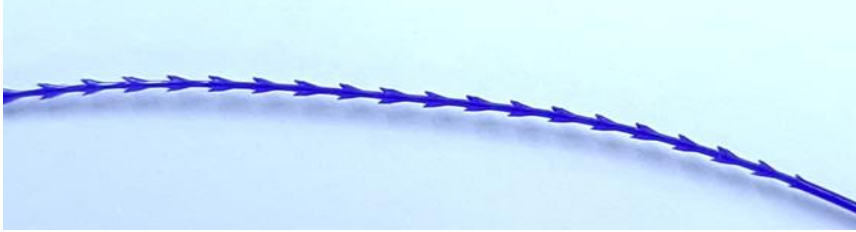
1. 2L Bio obtained GMP, ISO, CE certificate and manufactures strictly following its regulations.
2. We achieved CE certificates especially for PDO, PLCL, PLLA and there are few companies who obtained CE certificates for those products.
3. Quality of LUNAQ
 - The quality of the product is superior to that of other products as it develops and produces equipment that matches the characteristics of the product.
 - PDO, PLCL, PCL Mold Cog <Picture 1, 2, 3>
 - Mold cog products are prime quality due to low tolerance mold press and process development.
 - The shape of Mold Cog is good and has high tensile strength after process and there is no bur.
 - PLCL, PCL Mold(Arrow type) which requires high technology to process is also available.

01 Advantages of 2L Bio's Products

- PDO, PLCL, PLLA, PCL Cog <Picture 4, 5>
 - With development of dedicated equipment which allows dual cut process for each material, the shape of Cog is thick and has high tensile strength after process.
 - In particular, it maintain higher tensile strength than other companies' products even for PLLA Cog with a sharp decrease in tensile strength after cog process:
Tensile strength: 15N ↑ (based on USP 2-0), other's: 8N
 - 2L Bio is the only company who can commercialization PLLA Cog.
- Twin(Double, Dual needle) Mold <Picture 1, 3, 6, 7>
 - More than 500mm of length for Twin Mold is available.
 - Regarding the Attaching strength, it has a high intensity with our own equipment, and the joint is clean.
 - Twin cases are also developed by 2L Bio and are easy to store and carry.

FYI) PCL and Twin Mold are not listed in CE certificate.

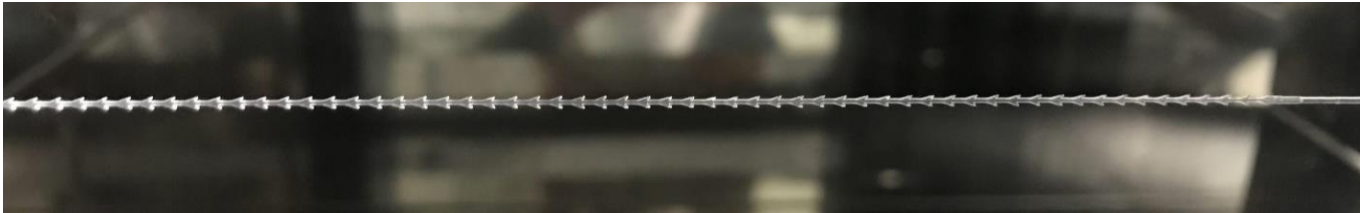
01 Advantages of 2L Bio's Products



<Picture 1 : PDO Mold>

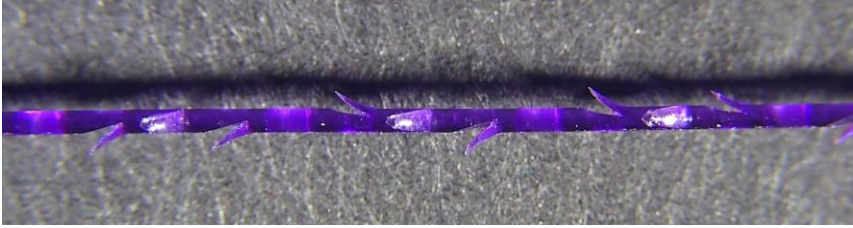


<Picture 2 : PLCL, PCL Mold>

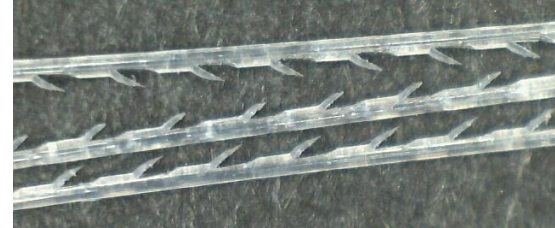


<Picture 3 : PLCL, PCL Mold>

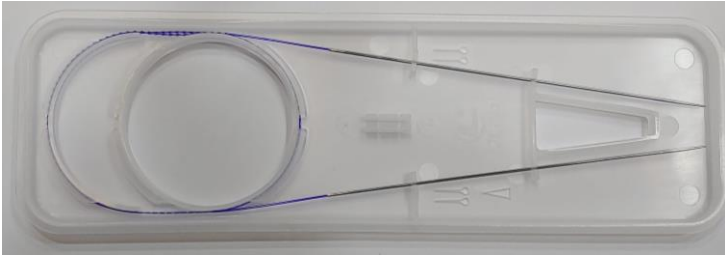
01 Advantages of 2L Bio's Products



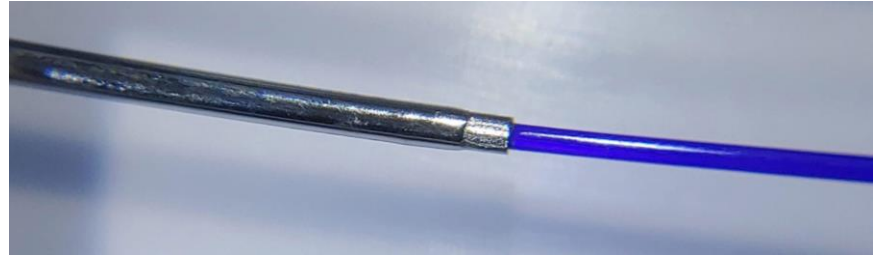
<Picture 4 : PDO Cog>



< Picture 5 : PLLA Cog>



< Picture 6 : Twin case and PDO Twin Mold>



< Picture 7 : Twin Mold attached to the Dual needle>

02


Comparison table

Material	PDO	PLLA	PLCL	PCL
Duration	+	+++	++	+++
Melting points	++	+++	+++	+
Tensile strength	+++	++	++	+++
Anchoring	++	+++	++	+
Elongation	+++	++	++	++++
Price	+	++	++	++



03

Notice

1. Once you use our products, you would be satisfied with our quality and competitive price.
 2. Inquire of us if you are interested in the blow services:
 - Obtain approval of Food and Drug food Administration / Health Authority
 - Exclusivity
 - OEM
- 

THANKS!

Do you have any questions?

brandon@2lbio.com

Whatsapp: +82 10 5804 6211

www.2lbio.com

