

uni test



TEST ONE



# Contents



## TEST

One more thinking

No more mistake

Enjoy working together

**TESTONE** is specialized in manufacturing tester.  
We have developed new products  
through continuous technology development  
with technicians with more than 20 years experience.



## Mechanical Universal Testing Machine

- UNITEST M1	-----	p.4
- UNITEST MD	-----	p.5
- UNITEST M2	-----	p.6

## Hydraulic Universal Testing Machine

- UNITEST H	-----	p.7
UTM SOFTWARE	-----	p.8

## OPTIONS

- UTM CHAMBER	-----	p.8
- EXTENSOMETER	-----	p.8

## UTM GRIPS

- FILM GRIP	-----	p.9
- TEXTILE GRIP	-----	p.9
- Rubber GRIP	-----	p.10
- WIRE GRIP	-----	p.10
- LEVER GRIP	-----	p.11
- WEDGE ACTION GRIP	-----	p.11
- PNEUMATIC GRIP	-----	p.12
- HYDRAULIC GRIP	-----	p.12
- COMPRESSION GRIP	-----	p.13
- BENDING GRIP	-----	p.13
- 90 ° PEEL GRIP	-----	p.14
- FRICTION GRIP	-----	p.14
- ORDER-MADE GRIP	-----	p.15

# Universal Testing Machine

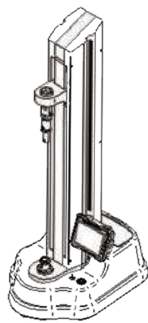
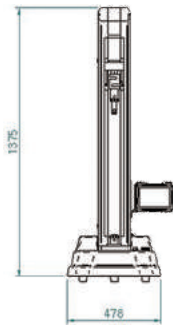
## uni test M1

### Feature

- It is a single column model that can be tested under 5 kN.
- UNITEST M1 is widely used for testing materials  
such as films, rubber, fibers, medical devices, biomaterials, and wires, etc.
- The main feature of the UNITEST M1 is that it requires a small footprint.



### Drawings



### Specifications

MODEL		UNITEST M1
Max Load Capacity	kN	5
Load Accuracy	%	± 0.5
Column Type		Single Column
Vertical Test Space	mm	730
Crosshead Speed	mm/min	0.01 ~ 500
Return Speed	mm/min	500
Load Resolution		1/50,000
Controller		Touch Type Servo Controller (Position Control Type)
Control Accuracy	%	± 0.1
Driving System		Ball Screw & Linear Guide Type
Driving Motor		AC Servo Motor & Driver (Japan)
Auto Function		Auto Start · End · Return System
Test Category		Tensile, Tear, Peel, Compression, Bending, Repeat, etc.
Safety Device		Emergency Stop, Over Load, Up-Down Limit (Proximity Sensor Type)
Dimensions	Width (mm)	478
	Depth (mm)	650
	Height (mm)	1375
Net Weight	kg (Approx.)	80
Power	Hz	AC 220V 2P, 50/60

# Universal Testing Machine

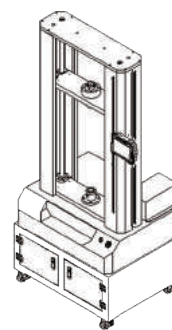
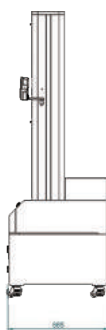
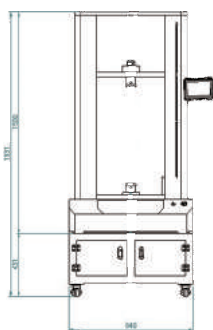
## unitestMD

### Feature

- This is a twin column model that can be tested at a maximum of 10 kN.
- UNITEST MD is widely used for testing materials such as plastics, composites and metals, etc.
- UNITEST MD is useful in tests where the vertical travel distance is greater than a single column.
- UNITEST MD is an environment chamber mountable model that can be tested under various environmental conditions.



### Drawings



### Specifications

MODEL		UNITEST MD
Max Load Capacity	kN	10
Load Accuracy	%	± 0.5
Column Type		Twin Column
Vertical Test Space	mm	940
Crosshead Speed	mm/min	0.01 ~ 500
Return Speed	mm/min	500
Load Resolution		1/50,000
Controller		Touch Type Servo Controller (Position Control Type)
Control Accuracy	%	± 0.1
Driving System		Ball Screw & Linear Guide Type
Driving Motor		AC Servo Motor & Driver (Japan)
Auto Function		Auto Start · End · Return System
Test Category		Tensile, Tear, Peel, Compression, Bending, Repeat, etc.
Safety Device		Emergency Stop, Over Load, Up-Down Limit (Proximity Sensor Type)
Dimensions	Width (mm)	840
	Depth (mm)	665
	Height (mm)	1500
Net Weight	kg (Approx.)	200
Power	Hz	AC 220V 2P, 50/60
Bottom Desk (W x D x H)	mm	840 x 665 x 430



# Universal Testing Machine

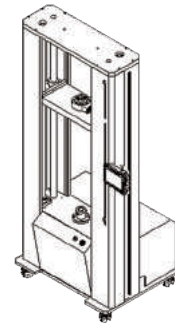
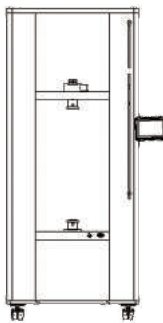
## uni test M2

### Feature

- This is a twin column model that can be tested at a maximum of 300 kN.
- UNITEST M2 is widely used for testing materials of high strength such as metals, alloys, advanced and composite materials, etc.
- UNITEST M2 is designed with a robust frame for testing up to 300 kN.
- UNITEST M2 is an environment chamber mountable model that can be tested under various environmental conditions.



### Drawings



### Specifications

MODEL		UNITEST M2-2	UNITEST M2-5	UNITEST M2-10	UNITEST M2-20	UNITEST M2-30
Max Load Capacity	kN	20	50	100	200	300
Load Accuracy	%	± 0.5				
Column Type		Twin Column				
Vertical Test Space	mm	1,350	1,100	1,100	1,100	1,100
Crosshead Speed	mm/min	0.01 ~ 500	0.01 ~ 500	0.01 ~ 300	0.01 ~ 300	0.01 ~ 300
Return Speed	mm/min	500	500	300	300	300
Load Resolution		1/50,000				
Controller		Touch Type Servo Controller (Position Control Type)				
Control Accuracy	%	± 0.1				
Driving System		Ball Screw & Linear Guide Type				
Driving Motor		AC Servo Motor & Driver (Japan)				
Auto Function		Auto Start · End · Return System				
Test Category		Tensile, Tear, Peel, Compression, Bending, Repeat, etc.				
Safety Device		Emergency Stop, Up-Down Limit (Proximity Sensor Type), Over Load				
Dimensions	Width (mm)	850	840	900	1305	1305
	Depth (mm)	700	700	800	935	935
	Height (mm)	2280	1990	2060	2560	2560
Net Weight	kg (Approx.)	360	360	580	2050	2050
Power	Hz	AC220V, 2P, 50/60	AC220V, 2P, 50/60	AC220V, 3P, 50/60	AC220V, 3P, 50/60	AC220V, 3P, 50/60

# Universal Testing Machine

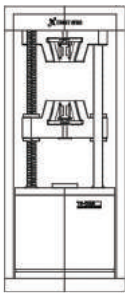
## unitest H Series

### Feature

- One-touch valve is applied to this UTM, so test operation is easy and the test speed can be adjusted freely.
- The structure of the tester is divided into a load section and a control section.



### Drawings



### Specifications

MODEL		UNITEST H-30	UNITEST H-50	UNITEST H-100	UNITEST H-200	
Max Load Capacity		kN	300	500	1000	2000
Range 4-Step	kN	30 · 100	50 · 100	100 · 200	200 · 500	
		200 · 300	200 · 500	500 · 1000	1000 · 2000	
	1 Div (kN)	0.003 · 0.01	0.005 · 0.01	0.01 · 0.02	0.02 · 0.05	
0.02 · 0.03		0.02 · 0.05	0.05 · 0.1	0.1 · 0.2		
Tensile Test	Max Tensile Distance (mm)	600	600	600	600	
	Grip For Round Bar (mm)	Ø8 ~ Ø25	Ø8 ~ Ø25	Ø8 ~ Ø40	Ø10 ~ Ø40	
		Ø25 ~ Ø40	Ø25 ~ Ø60	Ø40 ~ Ø70	Ø40 ~ Ø80	
	Grip For Plate Bar (mm)	0 ~15	0 ~15	0 ~ 45	0 ~ 50	
		15 ~ 30	15 ~ 40	45 ~ 65	50 ~ 70	
Wide : 60		Wide : 60	Wide : 70	Wide : 90		
Compression Test	Test Stroke (mm)	0 ~ 600	0 ~ 600	0 ~ 600	0 ~ 600	
	Dia Plate (mm)	Ø120	Ø160	Ø160	Ø200	
Transverse & Bending Test	Bending Distance (mm)	450	450	450	500	
	Punch Tips Radius (r)	16	25	25	25	
	Punch Width (mm)	160	160	160	160	
	Roller Diameter	Ø30	Ø50	0 ~ 45	0 ~ 50	
Table Size	mm	800 x 560	840 x 580	905 x 600	1040 x 720	
Columne To Columne	mm	560	610	610	740	
Max Ram Stroke	mm	200	200	200	200	
Test Speed	mm/min	0.01 ~ 100	0.01 ~ 100	0.01 ~ 100	0.01 ~ 100	
Crosshead Speed	mm/min	400	400	400	400	
Crosshead Motor		Gearedmotor 1/40, 0.4 kW		Gearedmotor 1/30, 0.75 kW		
Control Valve		Hydraulic Servo Valve				
Load Sensor		Load Cell				
Stroke Sensor		Rotary Encoder				
Control		Load Control, Stroke Control, Strain Control				
Hydraulic Pump Capacity	cc	2	2.7	4.4	7	
Net Weight	kg (Approx.)	2,200	2,500	3,000	4,500	
Dimension (W x D x H)	mm	2200 x 800 x 2000	2200 x 850 x 2200	2400 x 850 x 2400	2600 x 1000 x 2700	

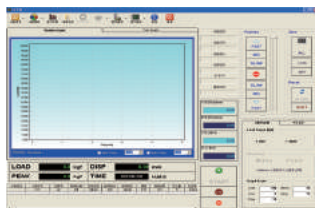
# uni test sw

## SOFTWARE

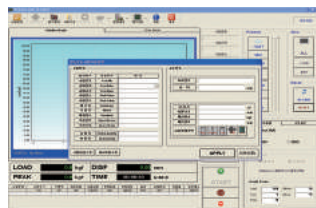
### Feature

- This is the software for UTM, You can select tension, compression, bending, peeling, repetition, retention test, etc. on the initial screen.
- The result analysis function makes it easy to find not only strength and elongation but also elasticity, yield point and average load.
- Unit conversion, data retrieval and correction, can be freely set to convert to Excel is convenient to use.
- Language: Korean, English

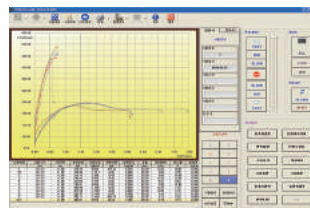
### Screen Shot



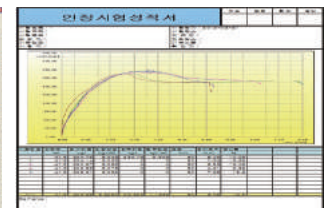
Initial Screen



Sample Setting Screen



Results Analysis Screen



Test Report Screen

## OPTIONS

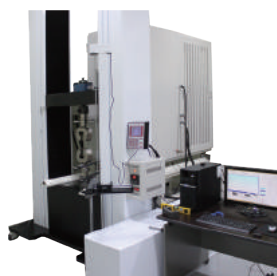
### CHAMBER

### Feature

- By controlling the temperature, it is possible to create various test environments and reliability test of materials and products is possible.
- You can set the temperature range by consultation.  
(Temperature Range : 190℃ ~ 1,000℃)
- Extensometer Type
  - Encoder Type
  - Strain Gauge Type

### EXTENSOMETER

### Sample Images

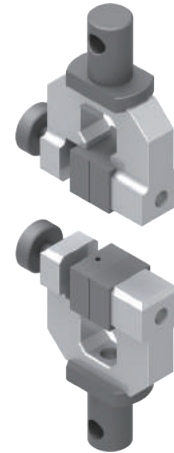
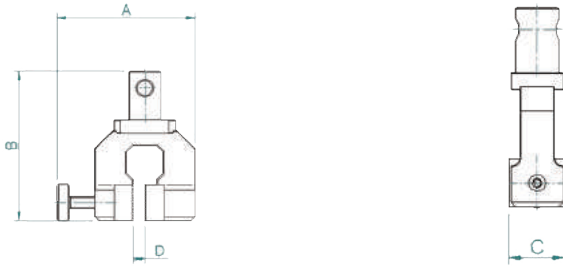




# JIGS

## FILM GRIP

### Drawings

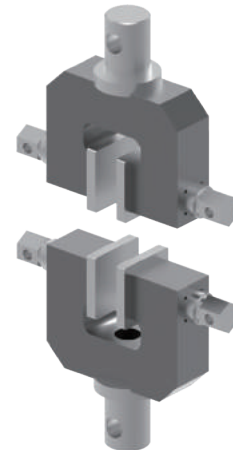
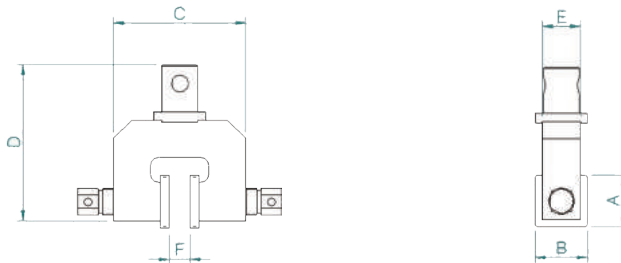


### Specifications

FILM GRIP	
A	107 mm
B	116 mm
C	30 mm
D	9 mm
JAW Size (W x D)	32 x 28 mm
Weight	Approx. 400 g

## TEXTILE GRIP

### Drawings

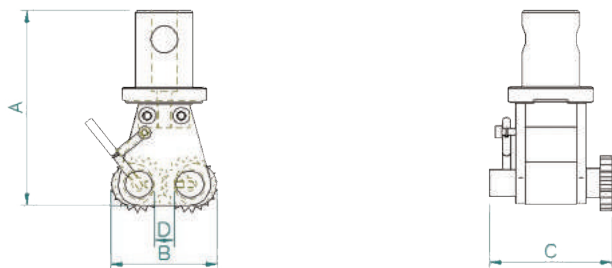


### Specifications

TEXTILE GRIP	Strip Method	Grab Method	Tongue Method
A		50 mm	
B		50 mm	
C		125 mm	
D		148 mm	
E		36 mm	
F		20 mm	
JAW Size (W x D)	50 x 50 mm	25 x 25 mm / 25 x 50 mm	25.4 x 76 mm
Weight		Approx. 400 g	

# RUBBER GRIP

## Drawings

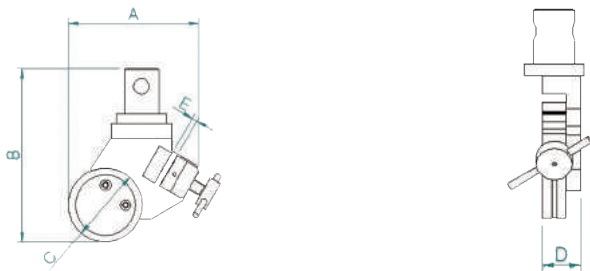


## Specifications

RUBBER GRIP	
A	115 mm
B	63 mm
C	72 mm
D	12 mm
Wight	Approx. 1.5 kg

# WIRE GRIP

## Drawings

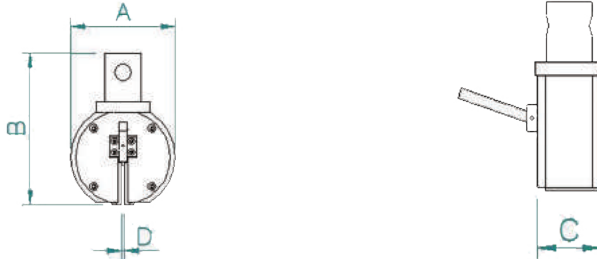


## Specifications

WIRE GRIP	
A	130 mm
B	173 mm
C	74 mm
D	12 mm
E	5 mm
Weight	Approx. 2 kg

## LEVER GRIP

### Drawings

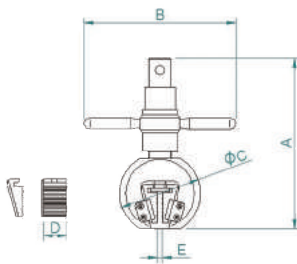


### Specifications

LEVER GRIP	
A	98 mm
B	147 mm
C	47 mm
D	8 mm
JAW Size (W x D)	35 x 40 mm
Weight	Approx. 3 kg

## WEDGE ACTION GRIP

### Drawings

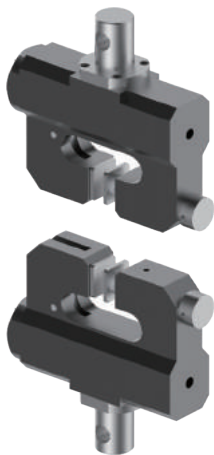
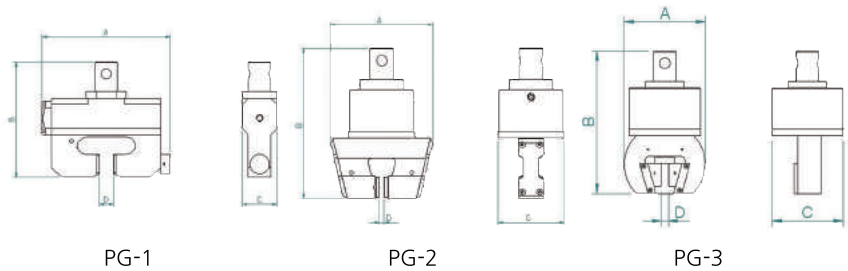


### Specifications

WEDGE ACTION GRIP	WA-1	WA-2	WA-3	WA-4
Load Capacity	1 ~ 3 tonf	5 tonf	10 tonf	20 tonf
A	220 mm	271 mm	290 mm	360 mm
B	195 mm	249 mm	284 mm	292 mm
C	120 mm	149 mm	178 mm	236 mm
D	40 mm	50 mm	50 mm	50 mm
E	10 mm	12 mm	16 mm	16 mm
Grip Range (Flat / Round Bar)	9 mm / Ø 6 - 13 mm	12 mm / Ø 8 - 16 mm	15 mm / Ø 12 - 20 mm	15 mm / Ø 12 - 25 mm
Weight	Approx. 7 kg	Approx. 10 kg	Approx. 14 kg	Approx. 20 kg

# PNEUMATIC GRIP

## Drawings

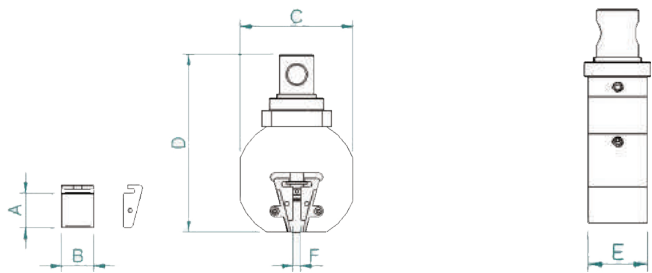


## Specifications

PNEUMATIC GRIP	PG-1	PG-2	PG-3
Max. Capacity	50 kgf	100 kgf	200 kgf
A	195 mm	146 mm	120 mm
B	175 mm	215.5 mm	210 mm
C	52 mm	95 mm	105 mm
D	20 mm	7 mm	10 mm
JAW Size (W x D)	30 x 30 mm	35 x 30 mm	30 x 35 mm
Weight	Approx. 2.5 kg	Approx. 3 kg	Approx. 3 kg
Pressure	6 bar	6 bar	6 bar

# HYDRAULIC GRIP

## Drawings

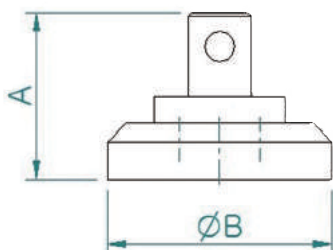


## Specifications

HYDRAULIC GRIP	
A	42 mm
B	40 mm
C	140 mm
D	220 mm
E	60 mm
F	8.5 mm
Weight	Approx. 5 kg

## COMPRESSION GRIP

### Drawings

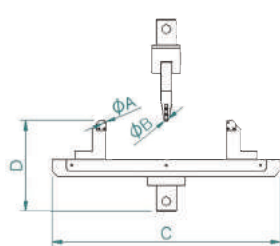


### Specifications

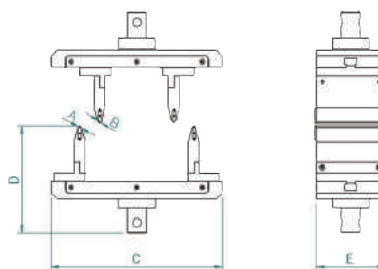
COMPRESSION GRIP	
A	89 mm
B	120 mm
Weight	Approx. 3.5 kg

## BENDING GRIP

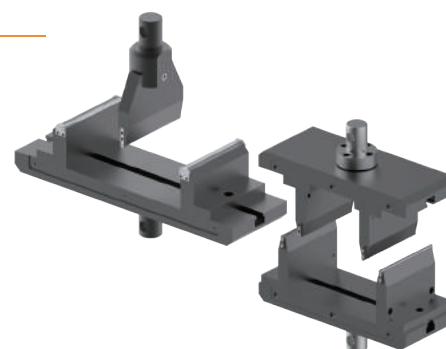
### Drawings



3 POINT BENDING GRIP



4 POINT BENDING GRIP



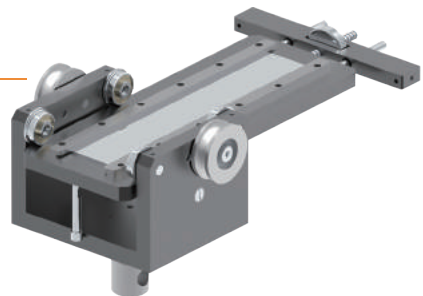
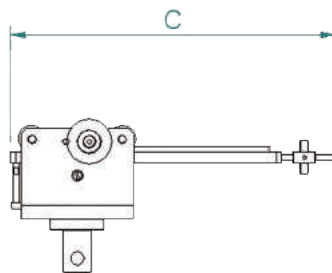
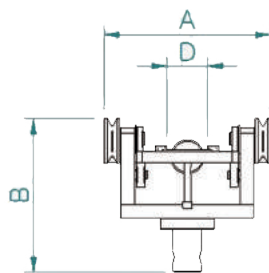
### Specifications

BENDING GRIP	3 POINT BENDING GRIP	4 POINT BENDING GRIP
A	10 mm	10 mm
B	10 mm	10 mm
C	300 mm	300 mm
D	150 mm	190 mm
E	120 mm	120 mm
Weight	Approx. 6 kg	Approx. 9 kg



# 90 ° PEEL GRIP

## Drawings

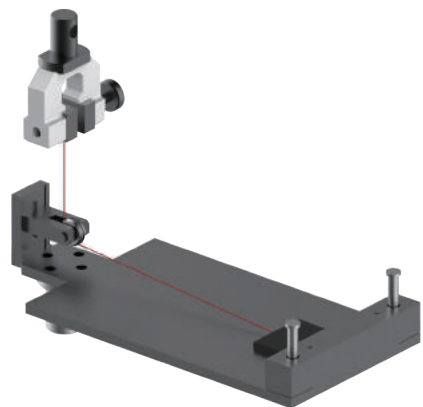
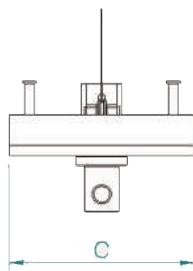
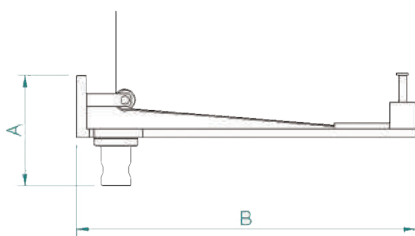


## Specifications

90° PEEL GRIP	
A	148 mm
B	137 mm
C	288 mm
D	36 mm
Weight	Approx. 2 kg

# FRICTION GRIP

## Drawings



## Specifications

FRICTION GRIP	
A	125 mm
B	385 mm
C	180 mm
Weight Size (W x D)	63.5 x 63.5 mm
Weight	Approx. 3 kg

## ORDER-MADE GRIP

