



TR-Q PDO / PLLA / PCL / PLCL

Best Service and Value-Added for
Our Customers through Outstanding Technology and Expertise.

METRO
KOREA

METRO KOREA

METRO KOREA Products

TR-Q Thread

12 Introducing TR-Q Thread Queen

14 PDO

15 Gold

16 Cog

17 JJ Molding Cog

18 Double Arm

19 Mesh

20 PCL

21 PLLA/PLCL





Needle Type



Strong point



Thread lifting is a simple yet effective treatment and a popular alternative to traditional facelifts. The non-surgical treatment lasts less than 60 minutes and is painless and not leaving any scar.

The lifting results can be noticed right after the treatment, and the thread materials, PDO/PLLA/PCL/PLCL, are safe and absorbable and will dissolve completely under skin.

Metro Korea Co., Ltd. has been supplying and manufacturing lifting threads since 2011, one of the first company to enter into the field. We specialized in providing OEM/ODM products along with our own brand, **TR-Q Thread Queen**.

With various types of threads designed with innovative technology, we are certain that TR-Q Thread Queen will bring satisfactory results.

Factory



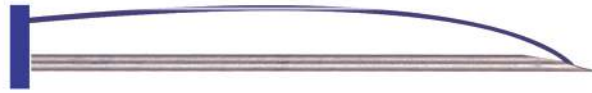
Thread insertion



TR-Q Thread Queen

PDO(Polydioxanone)

Mono



GAUGE	NEEDLE	USP
26G	38mm / 60mm / 90mm	5-0
27G	38mm / 50mm	5-0
29G	38mm / 50mm / 60mm	6-0
30G	25mm / 38mm	7-0

Mono Screw



GAUGE	NEEDLE	USP
25G	90mm	6-0
26G	38mm / 60mm	6-0
27G	38mm / 50mm	6-0
29G	38mm / 50mm	6-0

Tornado



GAUGE	NEEDLE	USP
26G	38mm / 60mm / 90mm	5-0

Tornado Screw



GAUGE	NEEDLE	USP
26G	38mm / 60mm / 90mm	7-0
27G	38mm / 50mm / 60mm	7-0

Cog Screw



GAUGE	NEEDLE	USP
21G	100mm	2-0
23G	90mm	3-0

Multi



GAUGE	NEEDLE	USP
22G	38mm / 60mm	6-0 * 7/10pcs

Eye Mono



GAUGE	NEEDLE	USP
30G	25mm / 38mm	7-0

Nose Cog



GAUGE	NEEDLE	USP
19G	38mm / 50mm	2

TR-Q Thread Queen

GOLD Thread

Pure Gold + PDO

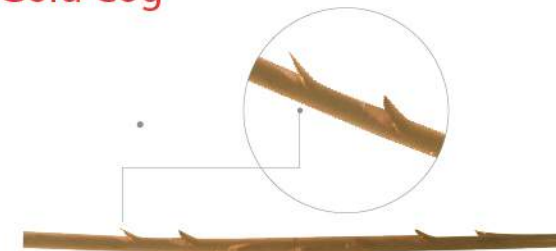
99.99% Pure Gold is coated at the surface of the thread which is used for imbedding therapy. This is the thread which is composed of PDO(Polydioxanone) with nano-size gold(Purity 99%) on the same thickness.

Effectiveness of Gold

- Anti-aging by expediting the bloodstream
- Increase the skin vitalization and eliminate freckles
- Prevent wrinkle from the skin surface
- Detoxification
- Enhance the skin immune system
- Gold's electric current which is similar to the human body electric helps to vitalize.



Gold Cog



GAUGE	NEEDLE
18G	100mm
19G	100mm

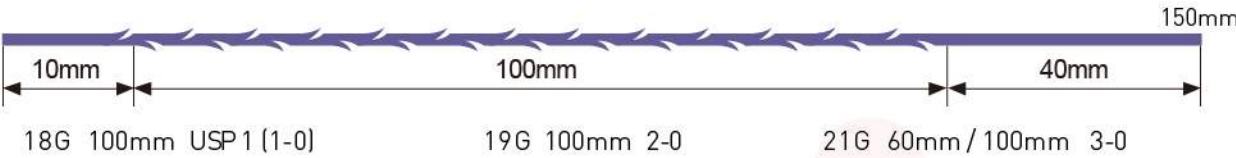
Gold Coated Mono



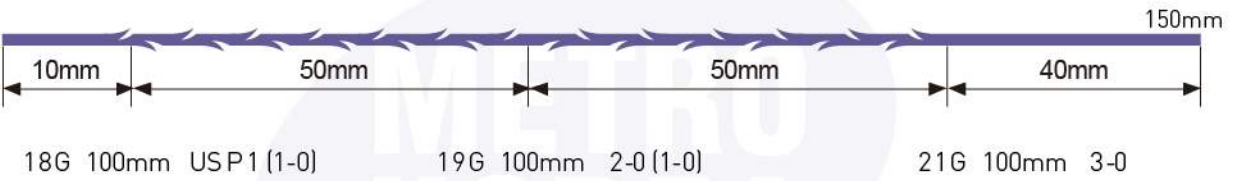
GAUGE	NEEDLE
27G	60mm
29G	38mm / 50mm

Cog

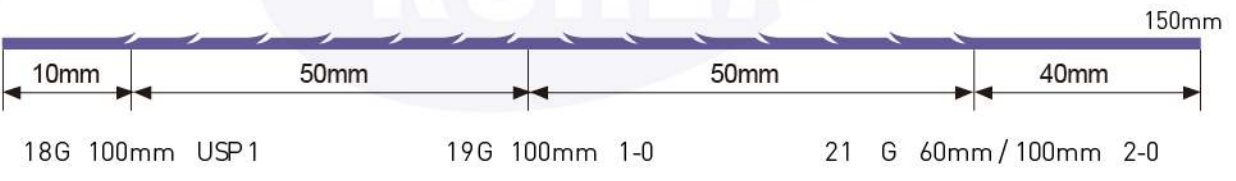
Type 3-1



Type 4-1



Type 5-1



360° Cog (3D/4D/6D/8D/12D)



360° 3D/4D/6D

18G 100mm USP 1 [1-0]
19G 100mm 2-0 [1-0]
21G 60mm / 100mm 3-0

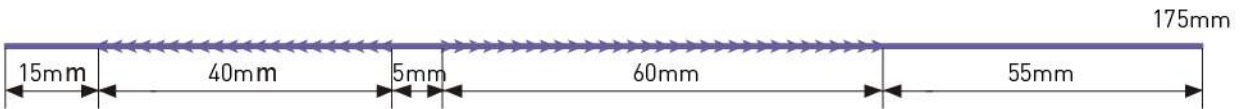
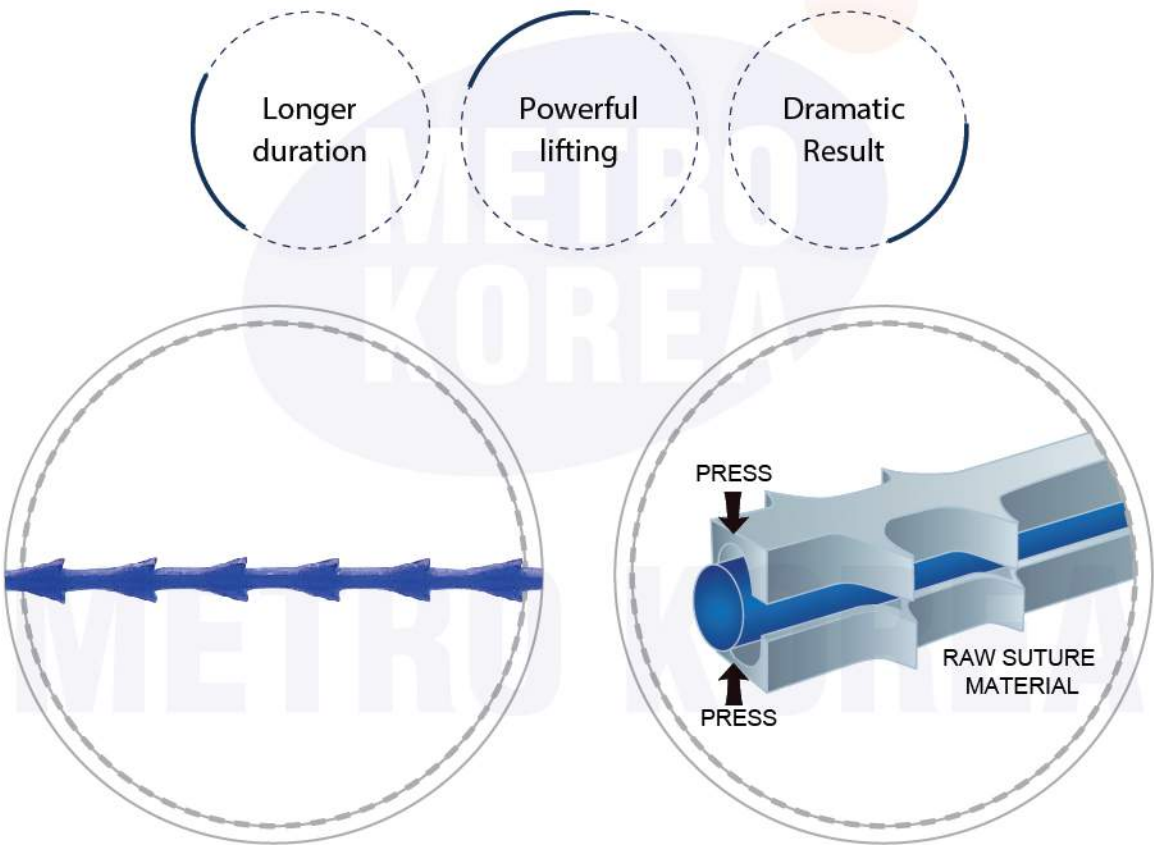
360° 8D/12D

18G 100mm USP 1 [1-0]
19G 100mm 2-0 [1-0]
21G 100mm 3-0

JJ Molding Cog

Press Molding PDO

TR-Q JJ Molding Thread is an advanced mesothread with powerful and long-lasting effects. Thicker cogs made through molding technology remain their shapes long enough for collagen to form around the cogs. Also, with its strong tensile strength, molding cog threads have powerful and dramatic face contouring results.



NEEDLE			THREAD	
TYPE	GAUGE	LENGTH	LENGTH	USP
L-TYPE W-TYPE	18G	100mm	175mm	2
	19G			

Double Arm

TR-Q Double Arm comes with 3D cog thread with two spatular or blunnt-cannula needles. Treatment with TR-Q Double Arm is simple yet effective, and results are instant and dramatic. Long needles are attached to each end of thread and make treatments easier, and treatment time can be significantly diminished, allowing less down-time and swell after treatment.

- 3D cog thread: strong pulling & anchoring
- 2 types of high-quality needles for best performance:
 - Spatular needle: easier & faster procedure (no puncture)
 - Blunt cannula: less pain & minimize bleeding
- Applied areas: double chin, eyebrow lifting, neck folds. sagging cheek



NEEDLE			THREAD	
TYPE	GAUGE	LENGTH	GAUGE	LENGTH
Spatular needle*2pcs 	19G	110mm	0	290mm
				440mm
				480mm
Blunt needle*2pcs 	21G	110mm	0	290mm
				440mm
				480mm




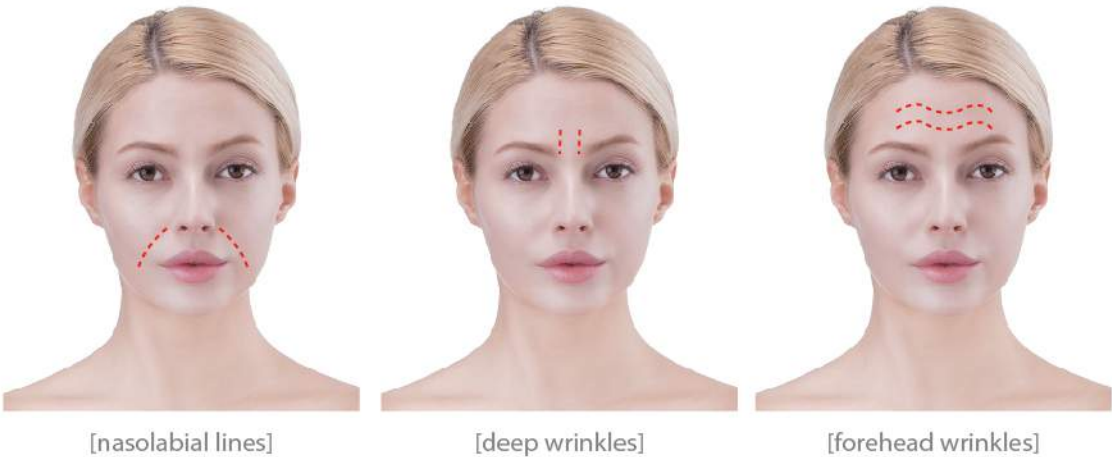
Mesh

TR-Q Mesh is made up of 8 or 16 pieces of threads braided together. It is excellent for volume effect as cells move through the holes of braided threads and form collagen around them. Collagen formed around the threads have volume effect even after absorption of threads thus TR-Q Mesh can work as a "thread filler".

- Excellent volume effect: 8 or 16 pieces of threads braided in tube shape
- Collagen generation: Cells move through the holes and generate collagen formation.
- Long lasting effect: Braided threads remain the tube shape after insertion and volume effect remains after absorption.
- Applied areas: nasolabial lines, deep wrinkles, forehead wrinkles.



NEEDLE			THREAD	
TYPE	GAUGE	LENGTH	LENGTH	USP
 L-TYPE	19G	38mm	40mm	5-0 * 8pcs
		50mm	70mm	7-0 * 16pcs
				5-0 * 8pcs



PDO vs. PLLA vs. PCL vs. PLCL

	PDO	PLLA	PCL	PLCL
Biodegradation Period	6~12 mths	12~18 mths	18~24 mths	16~22 mths
Feeling of Discomfort	+	+++		+
Anchoring	++	+++	+	++

PCL(Polycaprolactone)

Less pain, longer duration, neocollagenesis

Eye Mono



GAUGE	NEEDLE	USP
30G	25mm / 38mm	7-0

Mono



GAUGE	NEEDLE	USP
26G	38mm / 60mm / 90mm	5-0
27G	38mm / 50mm	5-0
29G	38mm / 50mm / 60mm	6-0

COG

GAUGE	NEEDLE	USP
18G	100mm	2
19G	100mm	2(1-0)

Nose Cog



GAUGE	NEEDLE	USP
19G	38mm / 50mm	2

Mono Screw



GAUGE	NEEDLE	USP
27G	38mm / 50mm	5-0
29G	50mm / 60mm	6-0

PLLA(Poly L-Lactic Acid)

Collagen stimulation, strong anchoring, same ingredient used for collagen filler, "Sculptra"

PLLA Mono



GAUGE	NEEDLE	USP
26G	90mm	5-0
27G	38mm / 50mm	5-0
29G	38mm / 50mm / 60mm	6-0
30G	25mm / 38mm	7-0

PLCL(Poly L-Lactide co-ε-Caprolactone)

Long biodegradation period, no discomfort, strong anchoring

Cog



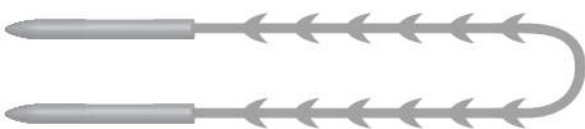
NEEDLE		THREAD	
GAUGE	LENGTH	LENGTH	USP
19G	100mm	180mm	0

Molding Cog



NEEDLE		THREAD	
GAUGE	LENGTH	LENGTH	USP
18G	100mm	180mm	2

Molding Double Arm



NEEDLE			THREAD	
TYPE	GAUGE	LENGTH	GAUGE	LENGTH
Blunt needle*2pcs	19G	110mm	2	340mm