

Rencol

COMPONENTS

INDUSTRIAL MANUFACTURING SINCE 1923



Rencol

COMPONENTS

INDUSTRIAL MANUFACTURING
SINCE 1923

Rencol's flexible manufacturing capabilities, engineering expertise, global supply chain and market knowledge allow us to develop cost-effective product solutions that exceed our customers' expectations.

Who we are

In the early twentieth century Rencol developed engineered plastic solutions ranging from electric car batteries and recharging stations to the plastic "Joylight" internal combustion engine.

By the 1970s our focus on components had emerged and the Rencol name became synonymous with high quality plastic knobs, handles and handwheels.

Today, we continue to grow, adapt and innovate:

- Our product range is extensive, industry-standard and growing.
- Our manufacturing partners are in key international locations, each chosen for their expertise, compatibility with our values and cost effectiveness.
- Our distribution network is worldwide and expanding.
- Our global supply chain has been in successful continuous operation for over a decade.

We are here to help

Exceptional customer service is central to our company philosophy. Our customer service team, on-site engineers, product designers and supply chain experts are here to advise and assist at all stages of the purchase and fulfilment process.

Call or email to:

- Check price and availability
- Make technical queries and request product advice
- Request samples
- Place and progress your order
- Request CAD drawings

Visit our website to:

- Request a quotation
- View product specifications and MOQs
- Find your local distributor
- Request CAD drawings
- Request a catalogue

Tel: +44 (0) 117 916 0090

Fax: +44 (0) 117 982 2235

Email: sales@rencol.com

Website: www.rencol.com

Office opening hours:

Monday to Friday

8.30 AM to 5.00 PM (GMT)



*Nick Dowden, 30 years with Rencol.
Customer Service Manager*

Index

Technical Specifications & Key

Material performance data, tolerances, colour options, quality certifications and product icon key.



Page 4

Model 01 IP Spring Loaded Index Plunger

Page 5



Model 02 IP Spring Loaded Index Plunger with Locking Rest Position

Page 6

SS



Model 03 IP Index Plunger with Rest Position and Fixing Plate

Page 7



Model 04 CP Cam Plunger

Page 8

SS HD



Model 05 IP Spring Loaded Ring Pull Plunger

Page 9

SS



Model 06 IP Threaded Ball and Spring Plunger

Page 10

SS



Model 07 IP All Metal Body Index Plunger

Page 11

SS



Model 08 IP Spring Loaded Retractable Index Plunger

Page 12



Model 09 IP Mini Index Plunger

Page 13



Modifications & Custom Components

Custom colours, threads, materials, sizes, finishes, etc.

Page 15



Technical Specifications & Key

Thermoplastic

Material: Nylon 6 + Polypropylene (PP)
Working temperatures: Nylon up to 130°C peak and 80°C continuous use. Polypropylene maximum 70°C.
Resistant to: alcohols, esters, aromatic hydrocarbons, dilute alkalis, ketones, oils, fuels, grease, fats, weatherability (including UV light - excludes coloured Nylon) and salt water.
With PP also avoid halogenated hydrocarbons and flammable materials (can hold static charge).

Reinforced Thermoplastic

Material: Nylon 6 glass filled
Working temperature: up to 180°C peak, 110°C continuous use.
Resistant to: alcohols, esters, aromatic hydrocarbons, dilute alkalis, ketones, oils, fuels, grease, fats, weatherability (including UV light) and salt water.

Duroplast

Material: Phenolic Based Duroplast (PF)
Working temperature: -30°C to 160°C
Resistant to: diluted mineral acids, alcohols, chlorinated hydrocarbons, aromatic hydrocarbons, detergents, grease, oils, weatherability (including UV light). Avoid high pressure or high impact loads (can shatter).

Soft-Touch Mouldings

Material: Polypropylene substrate, TPE over-mould. Rencol has standard parts already available in this design, used particularly extensively in both industrial and special needs market products.

Brass

Material: BS2874 CZ121. Especially recommended for any materials likely to have continued exposure to temperatures below -30°C, where most steel grades become brittle. Also used as a marine grade material when nickel plated.

Zinc Plated Steel

Material: EN1A leaded-bright zinc passivated.

Stainless Steel

Material: Standard grade is 304. For medical, catering or marine use recommended grade is 316 - has high chloride resistance.

Aluminium

Grades are 6061 and A380. Others available on request.

Colours

Colour options include black, red, yellow, green, blue, white and grey. Other colours are available on request. If you would like to see the colours before ordering, samples can be provided free of charge.








Thread Depths

Wherever possible thread depths are a minimum of 1.5 x the diameter of the thread.

Tolerances

In general, our products are produced to the following tolerances:
Bore sizes: $\pm 0.1\text{mm}$ (0.004in)
Outside dimensions: $\pm 0.5\text{mm}$ (0.020in)
Male thread length: $\pm 1\text{mm}$ (0.040in)

Key

-  **Colour options** - RAL colours on request.
-  **Heavy duty** - Particularly hard wearing item.
-  **Stainless steel** - Partly or totally stainless steel.
-  **Fixing from above**
-  **Fixing from below**
-  **Multi component build** - Assembly available.
-  **Soft touch** - TPE over mould. Oil resistant.



Rencol Components is **ISO 9001:2008 Certified**
Our components are **REACH & RoHS Compliant**

Knob material

High impact resistant thermoplastic

Knob finish

Matt

Body material

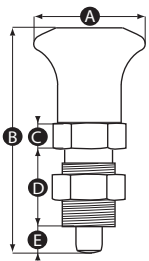
Blackened steel

Standard colour

Black knob

Options

Available with or without a 90° locking rest position.



Part No.	A	B	C	D	E	Thread size	Plunger diameter (mm)	Rest position
12542S	21	45	5	17	5	M10x1.0	5	No
12672P	21	51	5	17	5	M10x1.0	5	No
11831Y	25	45	5	10	6	M12x1.5	6	No
12673W	25	61	6	20	6	M12x1.5	6	No
11833Q	31	54	6	12	8	M16x1.5	8	No
12674S	31	76	8	26	7	M16x1.5	8	No
11832U	25	45	5	10	6	M12x1.5	6	Yes
11834X	31	54	6	12	8	M16x1.5	8	Yes

SS

Knob material

High impact resistant thermoplastic

Knob finish

Matt

Body material

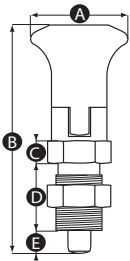
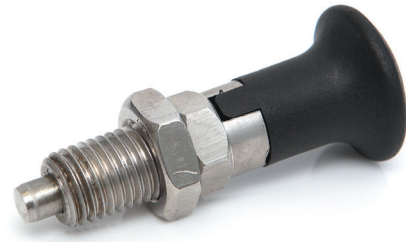
Blackened steel or stainless steel

Standard colour

Black knob

Options

Comes as standard with 90° locking rest position in plunger body.



Part No.	A	B	C	D	E	Thread size	Plunger diameter (mm)	Body material
11817Z	21	51	5	17	5	M10x1.0	5	Blackened steel
11821U	25	61	6	20	6	M12x1.5	6	Blackened steel
11825P	31	76	8	26	7	M16x1.5	8	Blackened steel
11818V	21	51	5	17	5	M10x1.0	5	Stainless steel
11822Q	25	61	6	20	6	M12x1.5	6	Stainless steel
11826W	31	76	8	26	7	M16x1.5	8	Stainless steel

Knob material

High impact resistant thermoplastic

Knob finish

Matt

Fixing plate material

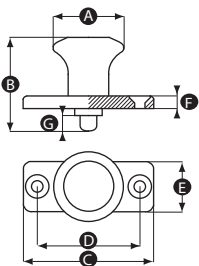
Zinc plated diecast steel

Standard colour

Black knob

Options

Available with or without a 90° rest position.



Part No.	A	B	C	D	E	F	G	Plunger diameter (mm)	Rest position
11819R	25	37	40	30	18	5	6	6	No
11823X	31	44	46	34	20	6	8	8	No
11820Y	25	37	40	30	18	5	6	6	Yes
11824T	31	44	46	34	20	6	8	8	Yes

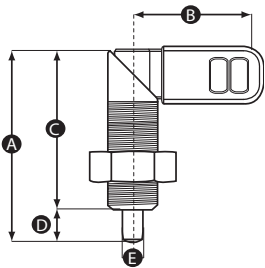
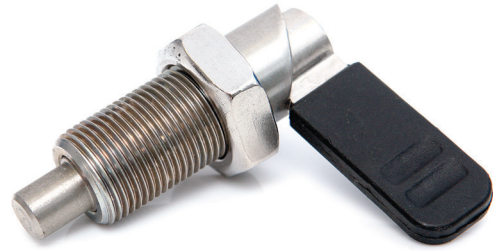
SS HD

Body material

Blackened steel or stainless steel

Includes

Comes as standard with locking nut. Stainless steel body comes complete with black plastic cap, burnished steel without cap.



Part No.	A	B	C	D	E	Thread size	Plunger diameter (mm)	Body material	Includes cap
15714R	47	32	39	8	8	M12x1.5	8	Blackened steel	No
15917T	47	32	39	8	8	M12x1.5	8	Blackened steel	Yes
11788U	69	37	36	12	8	M20x1.5	8	Blackened steel	No
11786R	69	37	36	12	10	M20x1.5	10	Blackened steel	No
11787Y	69	37	36	12	12	M20x1.5	12	Blackened steel	No
11794S	69	52	36	12	8	M20x1.5	8	Stainless steel	Yes
11795Z	69	52	36	12	10	M20x1.5	10	Stainless steel	Yes
11796V	69	52	36	12	12	M20x1.5	12	Stainless steel	Yes

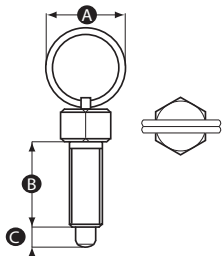
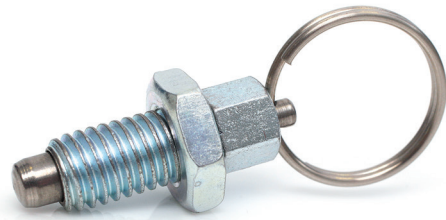
SS

Material

Zinc plated housing with stainless steel pin

Includes

Comes as standard with lift ring and locking nut.



Part No.	A	B	C	Thread size	Plunger diameter (mm)
11827S	14	12	4	M6	4
11828Z	18	16	5	M8	5
11829V	24	20	6	M10	6
11830R	30	24	8	M12	8

SS

Body material

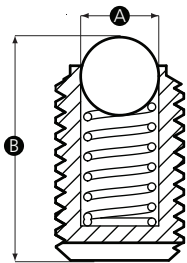
Blackened steel or stainless steel

Ball material

Bearing steel or stainless steel

Spring material

Spring steel or stainless steel



Part No.	A	B	Thread size	Body material	Ball material	Spring material	Initiating force (N)	Force for full retraction (N)
12681X	1.5	8	M3	Blackened steel	Bearing steel	Spring steel	3	5
12682T	2.5	10	M4	Blackened steel	Bearing steel	Spring steel	5	8
12683P	3	13	M5	Blackened steel	Bearing steel	Spring steel	7	11
12684W	3.5	15	M6	Blackened steel	Bearing steel	Spring steel	10	18
12685S	5	18	M8	Blackened steel	Bearing steel	Spring steel	30	45
12686Z	6	21	M10	Blackened steel	Bearing steel	Spring steel	30	50
12687V	8	25	M12	Blackened steel	Bearing steel	Spring steel	50	80
12688R	10	28	M16	Blackened steel	Bearing steel	Spring steel	80	165
12689Y	12	35	M20	Blackened steel	Bearing steel	Spring steel	55	95
12690U	1.5	8	M3	Stainless Steel	Stainless steel	Stainless Steel	3	6
12691Q	2.5	10	M4	Stainless Steel	Stainless steel	Stainless Steel	2	4
12692X	3	13	M5	Stainless Steel	Stainless steel	Stainless Steel	7	11
12693T	3.5	15	M6	Stainless Steel	Stainless steel	Stainless Steel	10	18
12694P	5	18	M8	Stainless Steel	Stainless steel	Stainless Steel	15	25
12695W	6	21	M10	Stainless Steel	Stainless steel	Stainless Steel	25	45
12696S	8	25	M12	Stainless Steel	Stainless steel	Stainless Steel	70	105
12697Z	10	28	M16	Stainless Steel	Stainless steel	Stainless Steel	85	140
12698V	12	35	M20	Stainless Steel	Stainless steel	Stainless Steel	60	100

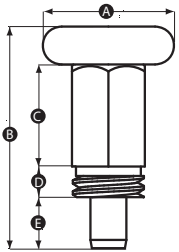
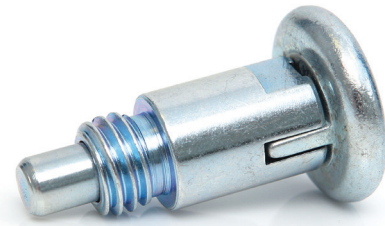
SS

Material

Zinc plated or stainless steel body, pin and spring. Zinc plated diecast head.

Note

M12 options do not have hexagonal body as per image - M12 options have 12mm A/F flats to accept 12mm spanner size.



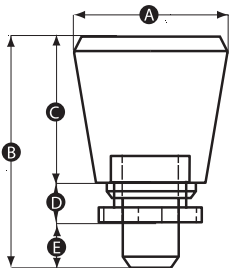
Part No.	A	B	C	D	E	Thread size	Plunger diameter (mm)	Body material	Rest position
15216S	18	30	14	6	7	M10x1.0	6	Zinc plated steel	No
15215W	18	30	14	6	7	M10x1.0	6	Zinc plated steel	Yes
15214P	24	39	19	8	7	M12x1.75	7	Zinc plated steel	No
15213T	24	39	19	8	7	M12x1.75	7	Zinc plated steel	Yes
15217Z	18	30	14	6	7	M10x1.0	6	Stainless steel	No
15218V	18	30	14	6	7	M10x1.0	6	Stainless steel	Yes

Material

Aluminium body, steel shell (flange), steel plunger pin and steel spring

Finish

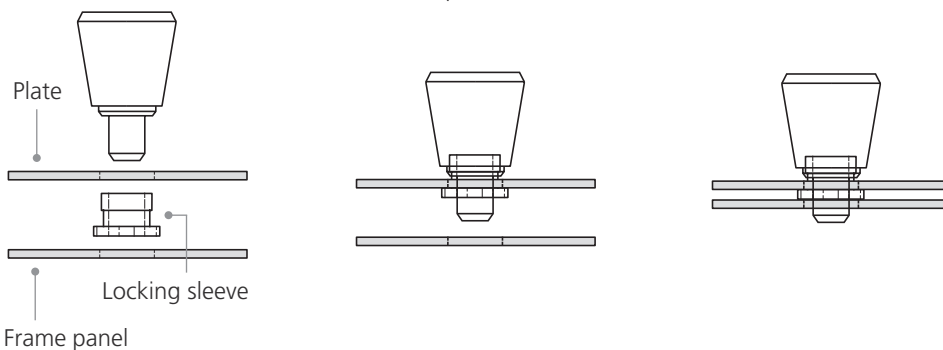
Bright chrome or black powder coated



Part No.	A	B	C	D	E	Thread size	Plunger diameter (mm)	Body material	Rest position
15697T	14	20	13	2	5	M8	4.7	Aluminium	Yes
15698P	14	20	13	2	5	M8	4.7	Black powder coated aluminium	Yes
15222Q	17	27	17	2	8	M10	6.2	Aluminium	Yes
15223X	17	27	17	2	8	M10	6.2	Black powder coated aluminium	Yes

Assembly

- 1 Unscrew locking sleeve from plunger body.
- 2 Locking sleeve screws into plunger body through hole in plate.
- 3 Pin locates in frame panel hole.



Knob material

High impact resistant thermoplastic

Knob finish

Matt

Body material

Zinc plated steel

Pin material

Stainless steel

Spring material

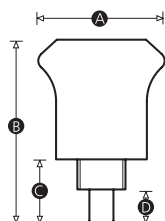
Stainless steel

Standard colour

Black knob

Options

Available with or without rest position



Part No.	A	B	C	D	Thread size	Thread length	Plunger diameter	Locking hex face to face	Rest position
15581V	21	30	10	5	M8 x 0.75	5	4	10	No
15908W	21	30	10	5	M8 x 0.75	5	5	10	No
15909S	25	35	15	7	M10 x 1.0	8	6	12	No
15910Z	25	35	15	7	M10 x 1.0	8	7	12	No
15911V	21	30	10	5	M8 x 0.75	5	4	10	Yes
15912R	21	30	10	5	M8 x 0.75	5	5	10	Yes
15913Y	25	35	15	7	M10 x 1.0	8	6	12	Yes
15914U	25	35	15	7	M10 x 1.0	8	7	12	Yes

A large grid of graph paper for taking notes, consisting of 20 columns and 40 rows of small squares.

Modifications & Custom Components

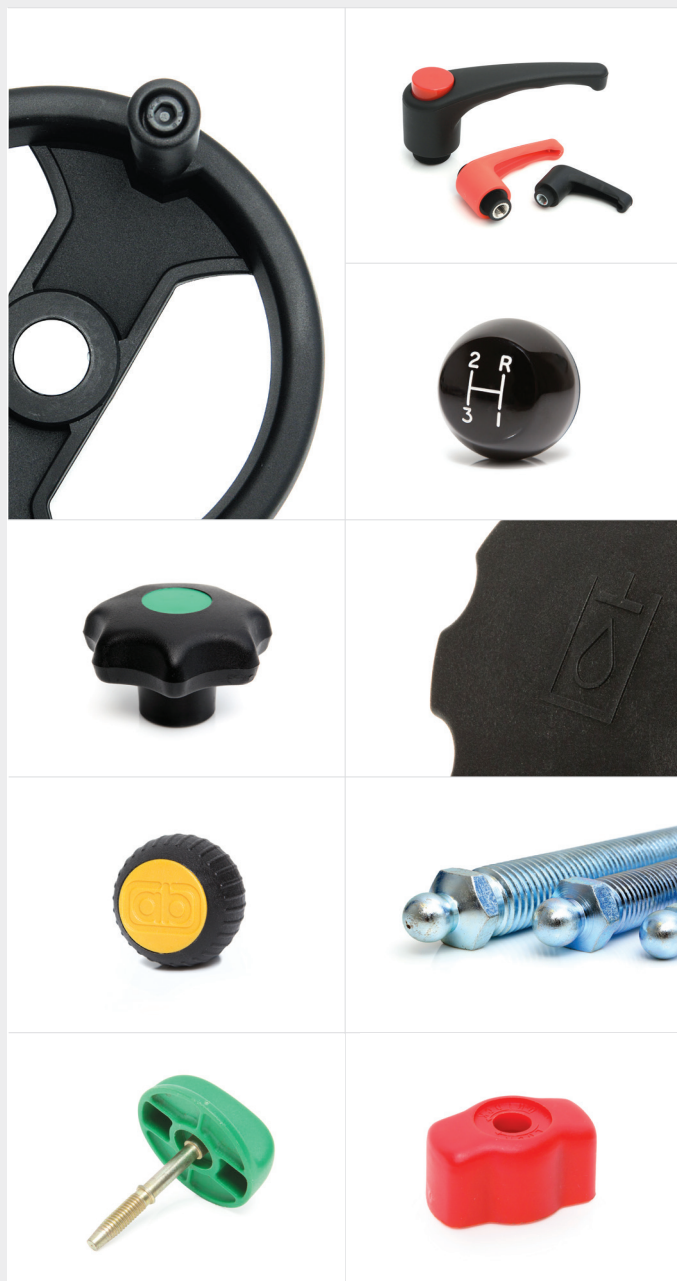
Diverse manufacturing capabilities and experienced on-site technical personnel allows Rencol Components to offer a wide range of product modifications and custom product solutions. We regularly adapt standard components or manufacture custom products to suit our customers' specific requirements. New tooling can be produced quickly and cost effectively with a typical MOQ of just 500 pieces.

Manufacturing Processes

Plastic & Metal Injection Moulding / Die casting / Machining / Forging / Stamping / Rapid Prototyping / 3D Printing

Modifications & Custom Options

Thread size & length / RAL Colours / Engraving / Pad-Printing & Screen-Printing / TPE Over mould / Materials / Finishes / Logos





Rencol COMPONENTS

Head Office (UK):

Unit 2 Avonbridge Trading Estate
Atlantic Road
Avonmouth
Bristol BS11 9QD
United Kingdom

Tel: +44 (0) 117 916 0090

Fax: +44 (0) 117 982 2235

Email: sales@rencol.com

Website: www.rencol.com

Office opening hours:

Monday to Friday
8.30 AM to 5.00 PM (GMT)