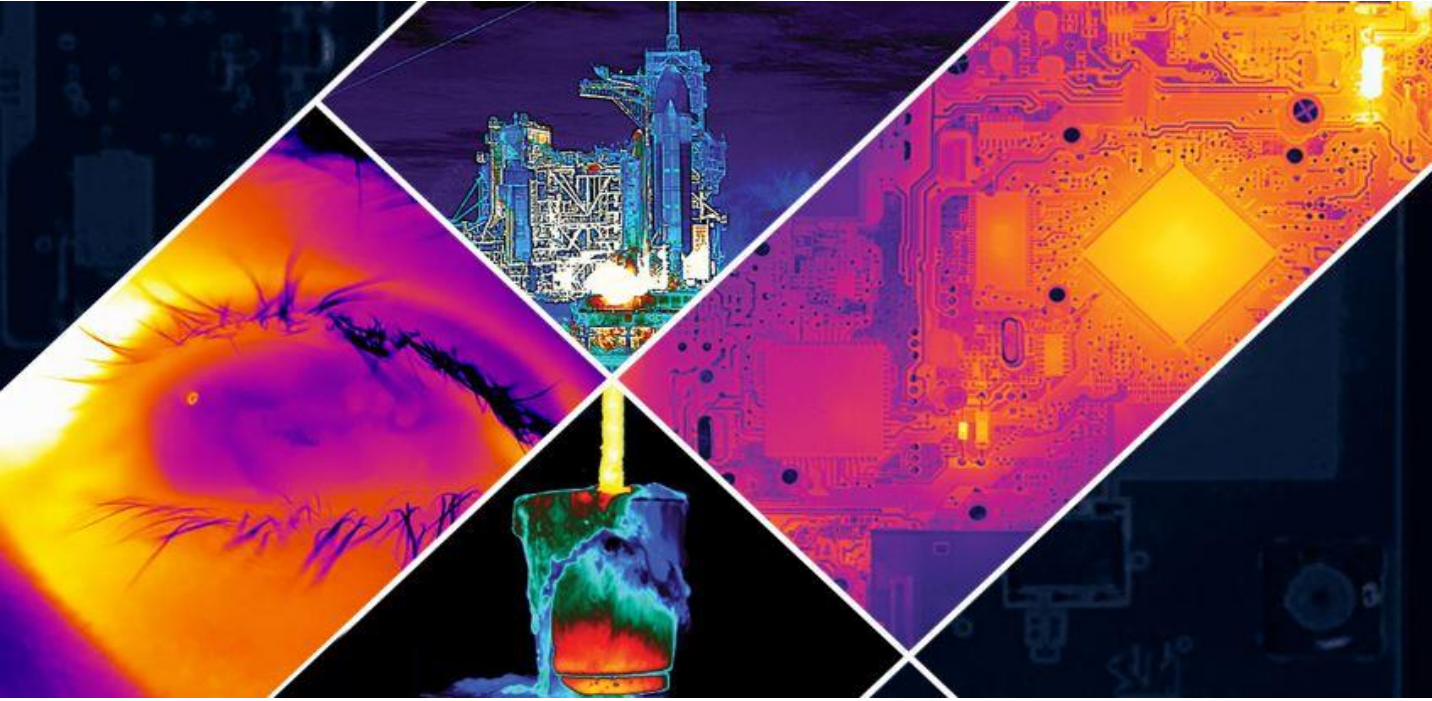


Aiview Technology



Flame detection CCTV camera for fire prevention

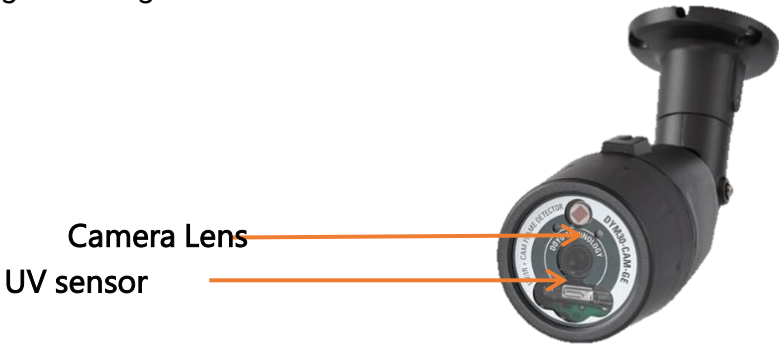


EXTREME SECURITY

SINCE 2016

The Flame Detector CCTV Camera is made of an integrated IP camera and flame detector sensor.

It is a product that combines the function of fire detection with the function of CCTV and can be installed in any place where CCTV is installed. The function can be maximized by applying it to industrial sites such as chemical laboratories, hazardous materials handling centers, various test rooms, coal transfer routes, and conventional markets, corridors, lobbies, and parking lots of large buildings.



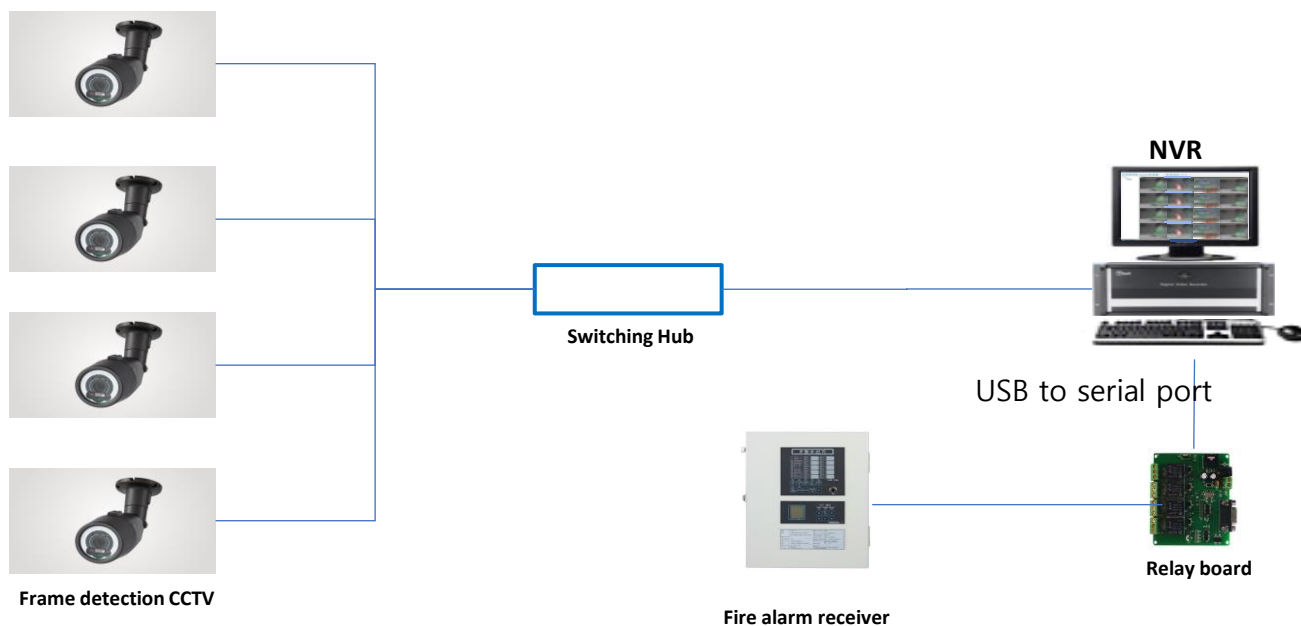
UV sensor Flame detection camera



Specification :

Type	Indoor type, indoor type, waterproof type, infrared/ultraviolet type combination type, CCD
Detection range	30M
View angle	100 degree
Arc welding separation distance	3M
Power	DC 24V
CCTV Pixel	HD 2mega pixel
Temperature	-20 °C ~ 80 °C
Size	62mm × 62mm × 126mm
LED COLOR	Green LED : Stand by / Red LED : Fire / Green and Red:FAULT
Output signal	Relay (COM,NO) , 0 ~ 5V

System Block diagram



EXTREME SECURITY

SINCE 2016



Lock the stable door after the horse has bolted.

居安思危

in case of Disaster: Prevention is the Best.

"Preparing with a small amount of money is like spending a lot of money. It's worth it."

Benjamin Franklin

We Think your Disaster and Security

Aiview Technology Co., LTD.

www.aiviewtech.com

Address : 1125, No.1 Seongnam Central BizTower, Galmachi-ro 314, Jungwon-gu, Seongnam-city, Gyeonggi-do, Korea 13201

Tel: 82-31-707-6188 , Email: ssatellite@naver.com

EXTREME SECURITY SINCE 2016

