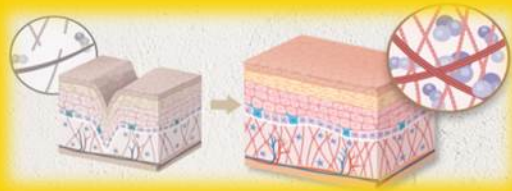


What's Marine Elastine?

It's an ingredient extracted from the ocean(fish)!



- ❖ Elastine, present in skin tissue at around 2%, is a resilient light protein, like rubber, composed of elastic fibers.
- ❖ Elastine exists between collagen and collagen and is entangled with connective tissue.
- ❖ Marine elastine is an elastine protein separated from deep sea fish (deep sea shark).
- ❖ It's a kind of protein with good elasticity that constitutes the dermal layer of the skin and has a function to maintain **skin elasticity**.
- ❖ **Moisturizes** with elasticity and moist skin.
- ❖ Elastine is known to play a role in maintaining the firmness of the skin.



What's Bee Venom peptide? Natural active peptide ingredients!

-A bee's protective substance consisting of about 40 active peptides

- Derived from pure natural materials
- Wrinkle improvement and skin whitening
- Powerful anti-bacterial, anti-inflammatory and immune effects
- Low risk of side effects and residues
- In terms of oriental medicine, it used a lot for the purpose of therapy
- It's the first in Korea to contain DMF 27321 certified purified bee venom

Main ingredients

Melittin 45-65% - Various pharmacological activities such as anti-inflammation, antibacterial, pain reduction, anti-vesic, and main ingredient of bee venom

PLA₂ 11.5-13% - Pharmacological activity of hemolysis and catalysis

Apamin 2.0-3.0% - Neuralgia relief, pain relief, anti-inflammation, immunity enhancement



#405, 142, Gwangdeok-daero, Danwon-gu,
Ansan-si, Gyeonggi-do
TEL: 82. 31. 409. 3707
FAX: 82. 31. 409. 3709
<http://www.biovenom.com>

Collagen Tightening & Lifting Mask

Skin confidence makes you
beautiful and healthy

Collagen Tightening & Lifting Mask



Pore Tightening / Lifting / Moisture



The collagen tightening & lifting mask uses natural ingredients with excellent skin affinity and is a cosmetic product for elasticity and lifting.

cjb Chungjin Biotech

Collagen

Tightening & Lifting

Mask

Skin confidence makes you beautiful and healthy

Collagen Tightening & Lifting Mask

1. Purified Bee venom's US FDA approval

Recognized for quality by passing the FDA approval of the world-wide US FDA

- FDA-Purified Bee Venom_DMF



2. Adhesive sheet without irritation – Ellose fabric

The Ellose fabric used in the hybrid gel mask is a low-irritation fabric obtained from **OEKO-TEX Standard 100**, a Swiss company that inspects 50 hazardous substances, for the first time in the mask fabric. It has excellent breathability and excellent skin adhesion according to face line, which is effective for skin care.

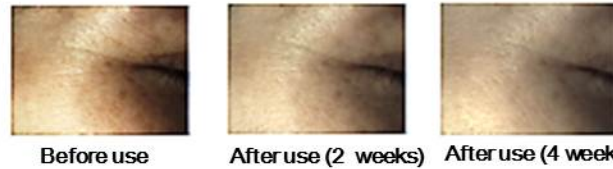


Mask before use

Adheres to skin and does not flow down



Wrinkle improvement effect before and after use of mask



- Hybrid gel masks combine the two functions to create the ultimate synergy
- Contains the ingredients of the dermis (Marine Collagen, Marine Elastin) and bee venom peptide to tighten the density of the skin to create a vibrant and smooth skin
- It's a gel-type mask containing skin care ingredients, giving skin a sense of tension and helping to maintain a healthy and radiant skin
- Ellose fabric is closely adhered to the face, and the skin is managed

> **Main ingredients** : Bee venom, Hydrolized collagen, Hydrolized elastine, Portulaca oleracea extract

> **Quantity** : 8 g X 5 EA

> **Usage**



After facial cleansing, gently apply some skin toner to adjust skin texture.



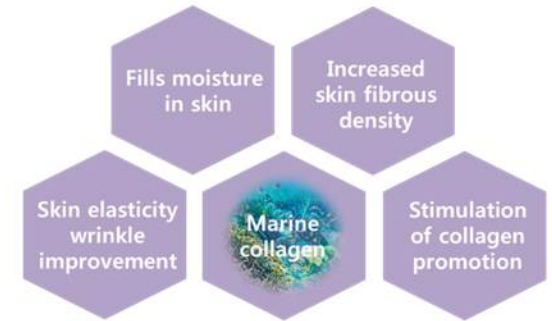
Open the pouch, apply upper and lower sheets fitting to your face shape.



Leave them about 10-20 minutes and then remove them.

What's Marine Collagen?

It's an ingredient extracted from the ocean (fish)!



- ❖ Collagen is an important protein that makes up the vast majority of the skin's dermal layer that keeps the cell tissue resilient and rugged.
- ❖ Marine collagen, also known as marine collagen, is an undiluted solution of amino acids extracted from natural Mediterranean marine proteins and purified with high purity collagen.
- ❖ Marine collagen helps to improve wrinkles by the homeostatic action of the skin (the physiological action that maintains the physical and chemical properties of the internal environment constantly despite changes in the external environment).
- ❖ It's a triple helix alignment form of a polypeptide chain of 80-120 nm in diameter, which has the same effect as existing animal collagen and has a molecular structure capable of binding with human skin. In all respects, it has the same properties as collagen found in human skin.

