



CE RoHS



www.alcofind.com
www.datech.co.kr

ALCO FIND

Worldwide leading breathalyzers
for personal & professional use

Head office / Factory / R&D

DA Tech Co., Ltd.

13, Seounsandan-ro 4-gil, Gyeyang-gu, Incheon, Korea (ZIP CODE 21072)

TEL : +82-32-868-0844 FAX : +82-32-868-0846



Since its establishment in February 2002, DA Tech Co., Ltd has always been at the forefront of digital breathalyzer (Alcohol Tester) development.

With accumulated experiences and cutting-edge technology, we spare no efforts to be a leader of the breathalyzer industry. Our first priority is to ensure safety to those who use our products and solutions.

DA Tech's 'ALCOFIND' digital breathalyzer series performs enhanced accuracy and wide range of usage from personal to professional in various fields. In addition, we have various models for customer choice and satisfaction.

We are doing our best to be a leading manufacturer of high technology breathalyzers in the global market.

Thank you.
Sincerely yours,
Kwang-Hee Park/CEO

CE, ISO 9001, EN 16280



Digital Breathalyzer AF-50

Overview

The AF-50 is a professional alcohol tester with extremely high-reliability. This product is ideal for Police-Enforcement, Trucking or Taxi Company, Hospital, School, and Industrial Fields where the higher-end breathalyzer with advanced features like working with printer, data management via pc-program, memory capability, and qualitative/quantitative test are required.

Package Contents

- ALCOFIND Breathalyzer
- 2(two) AA size batteries
- 6(six) Mouthpieces
- Hard shell Carrying Case
- User's Manual
- * 5 Funnel Mouthpieces for quantitative tests (AF-50 Advanced)
- * Hard Protective Case (AF-50 Advanced)

Feature

- Premium Fuel Cell Sensor
- 2,000 sets of test result memory
- Data management via PC
- Wireless printing interface with portable printer
- Advanced user adjustable setting menu
- OLED Display
- Dual testing mode (Normal / Fast)
- Bluetooth 4.2 LE
- Calibration reminder
- Test number display
- GPS receiver (option)



AF-50

Specifications

	AF-50	AF-50 (Advanced)
Indication of B.A.C.	0.000 ~ 0.500 %BAC 0.00 ~ 5.00 ‰ 0.00 ~ 2.50 mg/l	
Accuracy	± 5% at 0.1 %BAC at 25°C	
Warm up time	Around 10 seconds at 0.50 g/l(‰) *Warm up time may vary depending on the BAC measured	
Sensor	Premium Fuel cell sensor	
Blow sensing	Pressure sensor	
Test mode	Qualitative test	Qualitative test
Display	OLED (128 x 64 pixel)	
Test memory	100	2,000
Real time clock	O	
Wireless communication	X	Bluetooth 4.2 LE - Printer
PC software	X	O
Dimensions(WxHxD)	60 x 128 x 24 (mm)	
Weight	130g including batteries	
Calibration	every 12 months or after 500 tests	
Operating temperature	-5 ~ 40°C	
Optional feature	X	GPS (Built-in)

Digital Breathalyzer AF-20 / AF-23

Overview

The AF-20 is the most affordable fuel cell breathalyzer. This product is excellent for all users who look for high accuracy and reliability provided by fuel cell technology at an affordable price.



AF-20



AF-23

Package Contents

- ALCOFIND Breathalyzer
- 2(two) AAA size batteries
- 3(three) Mouthpieces
- User's Manual

Feature

- Fuel Cell Sensor
- Test memory
(Recall a previous test result)
- 4 digit measurement display
- Low battery warning
- Automatic power-off
- Test number display

Specifications

Indication of B.A.C.	0.000 ~ 0.400 %BAC 0.00 ~ 4.00 ‰ 0.00 ~ 2.00 mg/l
Accuracy	0.000 ~ 0.400 %BAC 0.00 ~ 4.00 ‰ 0.00 ~ 2.00 mg/l
Warm up time	Within 15 seconds at 0.50 g/l(‰) *Warm up time may very depending on the BAC measured.
Sensor	Fuel cell sensor
Power supply	2 (two) AAA size alkaline batteries
Battery Life	Approx. 1000 tests
Dimensions (WxHxD)	51mm x 109mm x 18mm
Weight	84g including batteries
Calibration	every 12 months or after 500 tests
Operating temperature	5 ~ 40°C

Mobile Breathalyzer AFM-5 / AFM-P3

Overview

It is a smart and versatile alcohol tester as it can utilize two mode - Working alone or Working with app. With app-enabled feature, It enables the user to understand his drinking patterns and make smart drinking decisions.



AFM-5



AFM-P3

Package Contents

- ALCOFIND Breathalyzer
- An AAA size battery
- 6(six) mouthpieces
- Carrying case
- User's manual

Feature

- Fuel cell sensor
- Compact size
- Bluetooth 4.0 LE
- Dual Mode (Standalone or App mode)
- Data share via social networks
- Data management
- Calibration reminder

Specifications

Indication of B.A.C.	0.000 ~ 0.400%BAC 0.00 ~ 4.00‰ 0.00 ~ 2.00mg/l
Accuracy	+/- 0.005%BAC at 0.1%BAC at 25°C +/- 0.05‰ at 1.0‰ at 25°C +/- 0.025mg/l at 0.50mg/l at 25°C
Warm up time	Within 15 seconds at 0.50 g/l(‰) *Warm up time may very depending on the BAC measured.
Sensor	Fuel cell sensor
Power supply	2 (two) AAA size alkaline batteries
Battery Life	Approx. 1000 tests
Dimensions (WxHxD)	51mm x 109mm x 18mm
Weight	84g including batteries
Calibration	every 12 months or after 500 tests
Operating temperature	5 ~ 40°C

Digital Breathalyzer AF-30C / AF-33C / AF-35C

Overview

It is designed for a personal & professional use with extremely high-reliability, providing a revolutionary feature, Calibration Reminder, which helps users get on-time calibration service to ensure accuracy



AF-30C

AF-33C

AF-35C

Package Contents

- ALCOFIND Breathalyzer
- Two AAA size batteries
- 6(six) mouthpieces
- Carrying case
- User's manual

Feature

- Fuel cell sensor
- 10 sets of test result memory
- Calibration reminder
- 4 digit measurement display
- Low battery warning
- Automatic power-off
- Test number display

Specifications

Indication of B.A.C.	0.000 ~ 0.500%BAC 0.00 ~ 5.00‰ 0.00 ~ 2.50mg/l
Accuracy	0.000 ~ 0.500%BAC 0.00 ~ 5.00‰ 0.00 ~ 2.50mg/l
Warm up time	Within 15 seconds at 0.50g/l(‰) Warm up time may vary depending on the BAC measured.
Sensor	Fuel cell sensor
Power supply	Two AA size alkaline battery
Battery Life	Approx. 1000 tests
Dimensions (WxHxD)	47mm x 108mm x 17mm
Weight	85g including batteries
Calibration	Every 12 months or After 500 tests
Operating temperature	5 ~ 40°C

Alcohol Interlock System AF-i1

Overview

AF-i1 is a breath-alcohol measuring instrument with a vehicle ignition system, it determines whether or not to permit the driver to release the vehicle's starter with a breath alcohol sample.



AF-i1

Package Contents

- Handset
- Control Box
- Cables
- Handset mount
- 10(ten) mouthpieces
- User's manual

Specifications

Sensor	Premium Fuel Cell sensor
Indication of B.A.C.	0.000 ~ 0.500%BAC 0.00 ~ 5.00‰ 0.00 ~ 2.50mg/l
Temperature range	-40 ~ 85°C
Ready for test	8 s at 20°C Around 110 s at -40°C
Display	FND with 4 characters
Calibration	Every 12 months or after 500 tests
Data memory	200,000 events
Dimensions	Handset 136 x 64 x 38 mm Control box 140 x 95 x 28 mm
Weight	Handset 120g Control box 536 g
Voltage supply	12 V or 24 V DC
Current consumption	< 2 A maximum, < 1 mA stand-by
Data transfer	Control box – RJ45 Handset - RJ45

Feature: Advanced features to prevent circumvention

- Senses the temperature and humidity of breath sample to prevent the manipulation by using other instrument.
- Senses the flow rate and air volume of breath sample to prevent the manipulation.
- Senses the vehicle engine to prevent the start of vehicle without an accepted test.
- Senses the vehicle voltage to prevent the removal of Interlock system from the vehicle

Meeting reminder & Calibration reminder

The audio alarm and visual reminders help driver get on-time calibration and other services by letting them know the remaining days to next calibration and other scheduled appointments.

The 200,000 events log date memories

The every relevant events the driver uses with the vehicle is recorded in the AF-i1, and 200,000 log data can be stored at both of Handset and Control Box.

Easy to download data

The data can be downloaded from either way – Handset or Control Box, which enables driver to easily transfer the data from removable Handset to PC at office or any place.

Easy to download data

The data can be downloaded from either way – Handset or Control Box, which enables driver to easily transfer the data from removable Handset to PC at office or any place.

Working under extreme conditions

The AF-i1 is designed to work perfectly from -40 degree to 85 degree, which allows to use it under severe winter conditions or extremely hot conditions.

Alcohol Screening Breathalyzer AF-100S

Overview

With many user friendly features, AF-100S is designed for use by Police at Traffic Roadblocks or Officer in various workplaces where the alcohol level of employees needs to be controlled with a quick test.



AF-100S

Package Contents

- ALCOFIND AF-100S
- 3(three) blow caps
- Hand strap
- USB cable
- User's manual

Feature

- Professional fuel cell sensor
- Fast test results
- LED readings display
- Easy passive mode
- LED signal lamp
- Low battery warning
- Rechargeable battery
- Calibration reminder

Specifications

Display	The status light - 10 LEDs for displaying the test results The level indicator - 5 LEDs for displaying the following information *Total test number, Remaining calibration date, Remaining battery level
Warm-up time	10 seconds (It may vary depending on the temperature)
Responding time	1 second
Recovery time to next test	2 seconds (It may vary depending on the BAC level)
Sensor	Professional Fuel cell sensor
Alarm level	5 different level available - 0.01 / 0.02 / 0.03 / 0.04 / 0.05 %BAC
Button	3 Buttons - ON/OFF, PASSIVE, SIGNAL LAMP
Power supply	Rechargeable Lithium-ion battery (2,000mA/h)
Battery life	Approx. 10 hours (It may vary depending on the temperature)
Dimensions	255mm, 40Ø
Weight	200g including batteries
Calibration	Every 6 months
Operating temperature	-10°C ~ 40°C (Working with built-in heater)

Digital Breathalyzer DA-9000

Overview

ALCOFIND DA-9000 is the most advanced feature presented professional alcohol tester with extremely high-reliability. It can be used for police-enforcement, trucking or taxi company, hospital, school, and many other industrial fields. It measures estimated B.A.C(Blood Alcohol Content) in human breath by means of fuel cell sensor which is highly durable and providing accurate breath alcohol test results. The key feature of DA-9000 is available to do test data management and user settings with your own PC. It also provides 250 test results memory and prints out via IR port with optional wireless printer. We hope you experience the essence of fuel cell sensor technology by use of DA-9000.



DA-9000



Hygienic Mouthpiece



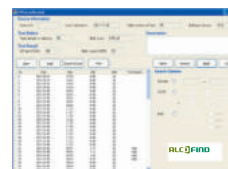
Wireless printing
with IR port



Portable Printer
(option)



USB to PC
connection



Data management S/W

Package Contents

- ALCOFIND DA-9000
- Two AA size batteries
- 10(ten) individually wrapped mouthpieces
- Carrying case (Hard shell pack)
- Hand strap
- USB cable
- Printer (option)
- User's Manual

Feature

- Premium fuel cell sensor
- 250 sets of test result memory
- Data management via PC
- Wireless printing interface with portable printer
- Advanced user adjustable setting menu
- High-resolution graphic LCD
- 4 digit measurement display
- Low battery warning
- Automatic power-off
- Test number display

Specifications

Indication of B.A.C.	0.000 ~ 0.500%BAC 0.00 ~ 5.00‰ 0.00 ~ 2.50mg/l
Accuracy	+/- 0.005%BAC at 0.1%BAC at 25°C +/- 0.05‰ at 1.0‰ at 25°C +/- 0.025mg/l at 0.50mg/l at 25°C
Warm up time	Within 12 seconds at 0.50g/l(‰) warm up time may vary depending on the BAC measured.
Sensor	Premium Fuel cell sensor
Power supply	Two AA size alkaline batteries
Battery Life	Approx. 1000 tests
Dimensions (WxHxD)	58mm x 125mm x 27mm
Weight	157g including batteries
Calibration	every 12 months or after 500 tests

Digital Breathalyzer DA-8700USB / DA-8700S

Overview

ALCOFIND DA-8700 Series is a personal & professional use alcohol tester with extremely high-reliability. It can be used in the hospital, school and many other industrial fields. It measures estimated B.A.C(Blood Alcohol Content) in human breath by means of fuel cell sensor which is highly durable and providing accurate breath alcohol test results.

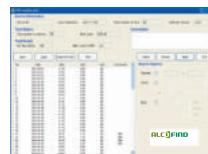
DA-8700USB



Hygienic Mouthpiece
USB to PC connection



4-digit LCD display



Data management S/W

DA-8700S



Hygienic Mouthpiece



4-digit LCD display

Package Contents

- ALCOFIND DA-8700 Series
- Two AA size batteries
- 10(ten) Mouthpieces
- Carrying case
- Hand strap
- USB cable
(for model DA-8700 USB only)
- User's Manual

Feature

- Professional fuel cell sensor
- 50 sets of test result memory
- Data management via PC
- 4 digit measurement display
- Adjustable user setting
(Blow time, Unit, Beep alarm, Blow detecting)
- Low battery warning
- Automatic power-off
- Test number display

Specifications

	DA-8700USB	DA-8700S
Indication of B.A.C.	0.000 ~ 0.500%BAC 0.00 ~ 5.00‰ 0.00 ~ 2.50mg/l	0.000 ~ 0.500%BAC 0.00 ~ 5.00‰ 0.00 ~ 2.50mg/l
Accuracy	+/- 0.005%BAC at 0.1%BAC at 25°C +/- 0.05‰ at 1.0‰ at 25°C +/- 0.025mg/l at 0.50mg/l at 25°C	+/- 0.005%BAC at 0.1%BAC at 25°C +/- 0.05‰ at 1.0‰ at 25°C +/- 0.025mg/l at 0.50mg/l at 25°C
Warm up time	+/- 0.005%BAC at 0.1%BAC at 25°C +/- 0.05‰ at 1.0‰ at 25°C +/- 0.025mg/l at 0.50mg/l at 25°C	Within 15 seconds at 0.50g/l(‰) warm up time may vary depending on the BAC measured.
Sensor	Professional Fuel cell sensor	Professional Fuel cell sensor
Power supply	Two AA size alkaline batteries	Two AA size alkaline batteries
Battery Life	Approx. 1000 tests	Approx. 1500 tests
Dimensions(WxHxD)	52mm x 123mm x 29mm	52mm x 123mm x 29mm
Weight	130g including batteries	128g including batteries
Calibration	every 12 months or after 500 tests	every 12 months or after 500 tests

- DA-8700 USB can be connected with a PC to manage the test data.
- DA-8700 S is a model without the USB connection.

Digital Breathalyzer DA-8500 / DA-8000

Overview

ALCOFIND DA-8500 and DA8000 are personal & professional use alcohol tester with extremely high-reliability. It can be used in the hospital, school and many other industrial fields.

It measures estimated B.A.C(Blood Alcohol Content) in human breath by means of fuel cell sensor which is highly durable and providing accurate breath alcohol test results.

DA-8500

Feature

- Professional fuel cell sensor
- 50 sets of test result memory
- 4 digit measurement display
- Adjustable user setting (Blow time, Unit, Beep alarm, Blow detecting)
- Low battery warning
- Automatic power-off
- Test number display



DA-8000

Feature

- Professional Fuel cell sensor
- 4 digit measurement display
- Adjustable user setting (Blow time, Unit, Beep alarm, Blow detecting)
- Low battery warning
- Automatic power-off
- Test number display



Hygienic Mouthpiece



4 digit display



Hygienic Mouthpiece



4 digit display

Package Contents

- ALCOFIND DA-8500
- Two AAA size batteries
- 10(ten) mouthpieces
- Carrying case
- Hand strap
- User's Manual

Package Contents

- ALCOFIND DA-8000
- Two AA size Batteries
- 6(six) Mouthpieces
- Hard shell Carrying Case
- User's Manual

Specifications

	DA-8500	DA-8000
Indication of B.A.C.	0.000 ~ 0.500%BAC 0.00 ~ 5.00‰ 0.00 ~ 2.50mg/l	0.000 ~ 0.500%BAC 0.00 ~ 5.00‰ 0.00 ~ 2.50mg/l
Accuracy	+/- 0.005%BAC at 0.1%BAC at 25°C +/- 0.05‰ at 1.0‰ at 25°C +/- 0.025mg/l at 0.50mg/l at 25°C	+/- 0.005%BAC at 0.1%BAC at 25°C +/- 0.05‰ at 1.0‰ at 25°C +/- 0.025mg/l at 0.50mg/l at 25°C
Warm up time	Within 15 seconds at 0.50g/l(‰) warm up time may vary depending on the BAC measured.	Within 15 seconds at 0.50g/l(‰) warm up time may vary depending on the BAC measured.
Sensor	Professional Fuel cell sensor	Professional Fuel cell sensor
Power supply	Two AAA size alkaline batteries	Two AA size alkaline batteries
Battery Life	Approx. 1000 tests	Approx. 1500 tests
Dimensions(WxHxD)	48mm x 120mm x 20mm	58mm x 123mm x 24mm
Weight	96g including batteries	131g including batteries
Calibration	every 12 months or after 500 tests	every 12 months or after 500 tests

Digital Breathalyzer DA-8100 / DA-7100

Overview

ALCOFIND DA-8100 and DA-7100 are personal & professional use alcohol tester with extremely high-reliability. It can be used in the hospital, school and many other industrial fields. It measures estimated B.A.C(Blood Alcohol Content) in human breath by means of fuel cell sensor which is highly durable and providing accurate breath alcohol test results.

DA-8100

Feature

- Fuel cell sensor
- 4 digit measurement display
- Adjustable user setting (Blow time, Unit, Beep alarm, Blow detecting)
- Low battery warning
- Automatic power-off
- Test number display



DA-7100

Feature

- Fuel cell sensor
- 4 digit measurement display
- Low battery warning
- Automatic power-off
- Test number display



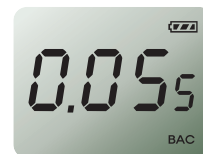
Hygienic Mouthpiece



4 digit display



Hygienic Mouthpiece



4 digit display

Package Contents

- ALCOFIND DA-8100
- Two AA size batteries
- 6(six) mouthpieces
- Carrying case
- Hand strap
- User's manual

Package Contents

- ALCOFIND DA-7100
- Two AAA size batteries
- 6(six) mouthpieces
- Carrying case
- Hand strap
- User's Manual

Specifications

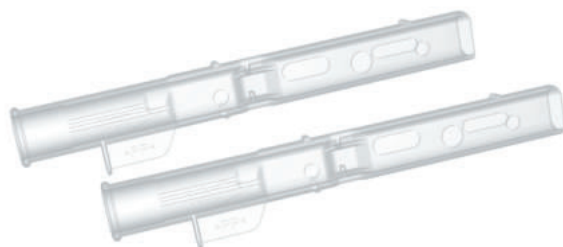
	DA-8100	DA-7100
Indication of B.A.C.	0.000 ~ 0.500%BAC 0.00 ~ 5.00‰ 0.00 ~ 2.50mg/l	0.000 ~ 0.500%BAC 0.00 ~ 5.00‰ 0.00 ~ 2.50mg/l
Accuracy	+/- 0.005%BAC at 0.1%BAC at 25°C +/- 0.05‰ at 1.0‰ at 25°C +/- 0.025mg/l at 0.50mg/l at 25°C	+/- 0.005%BAC at 0.1%BAC at 25°C +/- 0.05‰ at 1.0‰ at 25°C +/- 0.025mg/l at 0.50mg/l at 25°C
Warm up time	Within 15 seconds at 0.50g/l(‰) warm up time may vary depending on the BAC measured.	Within 15 seconds at 0.50g/l(‰) warm up time may vary depending on the BAC measured.
Sensor	Fuel cell sensor	Fuel cell sensor
Power supply	Two AA size alkaline batteries	Two AAA size alkaline batteries
Battery Life	Approx. 1500 tests	Approx. 1000 tests
Dimensions(WxHxD)	52mm x 123mm x 29mm	48mm x 120mm x 20mm
Weight	127g including batteries	93g including batteries
Calibration	every 12 months or after 500 tests	every 12 months or after 500 tests

Mouthpiece DM-12S / DM-90



DM-12S for DA / AF series

- *DM-12S 10 PACK - Contains 10 individually wrapped DM-12S in poly bag.
- *DM-12S 20 PACK - Contains 20 individually wrapped DM-12S in poly bag.
- *DM-12S 50 PACK - Contains 50 individually wrapped DM-12S in poly bag.
- *DM-12S 100 PACK - Contains 100 individually wrapped DM-12S in poly bag



DM-90 for DA-9000

- *DM-90 10 PACK - Contains 10 individually wrapped DM-90 in poly bag.
- *DM-90 50 PACK - Contains 50 individually wrapped DM-90 in poly bag.

※ The specifications are subject to change without prior notice for functional improvements.



13, Seounsandan-ro 4-gil, Gyeyang-gu, Incheon, Korea (ZIP CODE 21072)
TEL : +82-32-868-0844 FAX : +82-32-868-0846 E-mail : sales@datech.co.kr



www.alcofind.com
www.datech.co.kr