



## Technical Specifications Document

Designed to give you peace of mind, knowing that the damaged caused by escape of water will be mitigated. The Autostopcock system is easy to install and use, and can be configured specifically for the size of property and occupants' lifestyle.

### Overview

The system comprises of three main components – a controller, solenoid valve and flow switch, together with all plumbing connections (WRAS approved) and 2m of 4 core cable.

The controller continually monitors water flow via the flow switch as well as ambient temperature and turns Off the mains water supply if there is a risk of escape of water.

### Automatic shut off – risk conditions

- 1. Leak - continuous flow, longer than a maximum time - set by dip switches (1mins - 90mins)**
- 2. Vacant property - no flow, longer than a maximum time - set by dip switches (12hrs to 96hrs)**
- 3. Frozen pipes - ambient temperature falls to 3 degrees centigrade or lower.**

### Installation

The Autostopcock is easy to install and setup without the need for special tools or complex configuration menus. The timer settings are set by dip switches on the back of the controller PCB. These

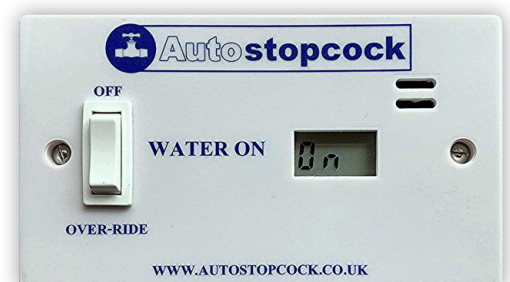
are confirmed on the display when it's first powered on. It is available for pipework up to 28mm with John Guest pushfit connections for a safe and quick installation.

### Features

- **Manually switchable at control panel**
- **Clear LCD display giving configuration, status and alarm information**
- **Audible alarm warning**
- **9v battery powered with 2 year battery life (optional mains power supply)**
- **Specific configuration settings for building project phases.**
- **60mins over-ride for extended use.**
- **Controller location up to 35m away.**

### Consumer experience

Once installed and running there is no maintenance required other than changing the battery every 2 years or so. The solenoid valve has a self-exercise function ensuring trouble free operation.



# AUTOSTOPCOCK SPECIFICATIONS



## System Controller

Size	145 x 85 x 30mm	Cabling	4 core (3184Y) 0.75sqmm/ core.
Power	9v battery (min 2 years), optional mains power supply.	System settings	configured using dip switches
Display type	LCD	Max distance	35m from valve/flow switch
Display info	configuration, status, battery low (with alarm) and error conditions.	Valve self exercise	every 7 days

## Flow Switch WRAS cert number 1802051

### SWITCHING

Contacts	NO, closed with flow
Vertical flow (up) rate	1.75L/min
Horizontal flow rate	2.0L/min
Flow release	0.75L/min

### CONSTRUCTION

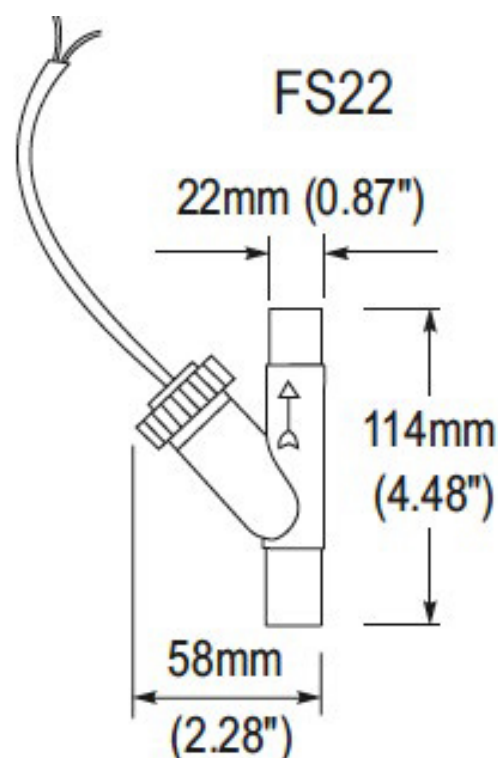
Material	Acetyl resin
Temperature range	-20 to +60c
Colour	Black

### ELECTRICAL

Max power	25VA
Max voltage DC	120v
Max current	0.6A

### INSTALLATION

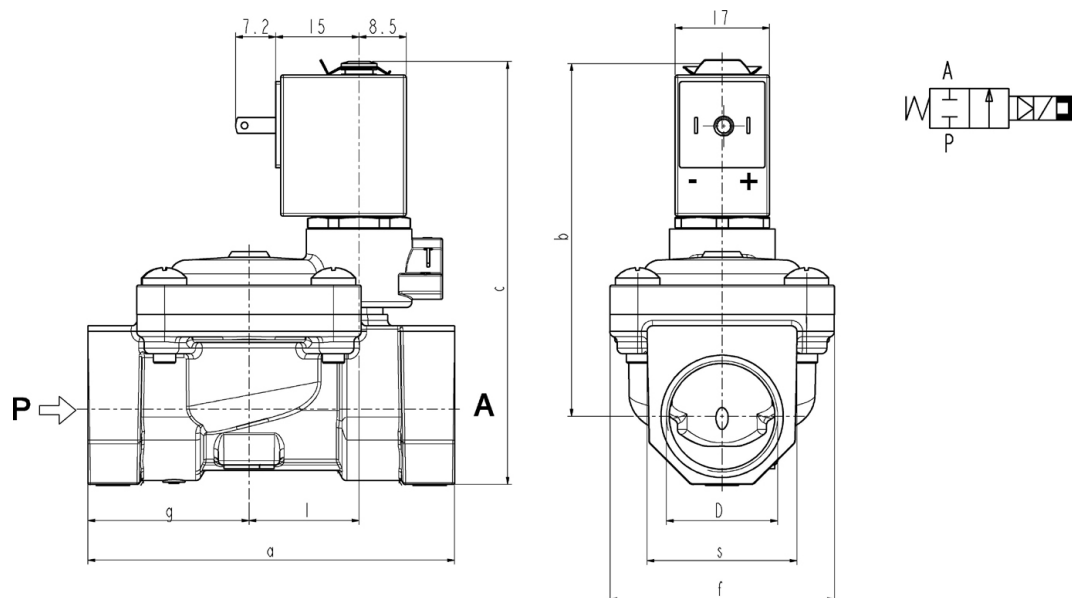
Position	installed vertically
Flow direction	upwards



# AUTOSTOPCOCK SPECIFICATIONS



## Solenoid Valve WRAS cert number 2007001



D	A	B	C	F	G	L	S
G3/4"	79mm	66.5	83	50	35.5	24.5	33

### HYDRAULIC CONNECTIONS

Inlet	¾ BSP female
Outlet	¾ BSP female

### MATERIALS

Body	brass
Sealing	EDPM
Internals	brass, stainless steel

### WORKING SPECIFICATIONS

Pressure	0.35 to 8 bar
Liquid temp	-10 to +140C
Flow direction	marked with arrow
Installation	vertical or horizontal
Weight	0.5kg
Voltages	6v to 12v

### RESPONSE TIMES

Opening	70ms
Closing	500ms

### COIL

Operation	Latching, polarized, operating with impulses
Electrical connection	DIN 46340, IP65