

Rencol

COMPONENTS

INDUSTRIAL MANUFACTURING SINCE 1923



Rencol

COMPONENTS

INDUSTRIAL MANUFACTURING
SINCE 1923

*Rencol's flexible
manufacturing capabilities,
engineering expertise,
global supply chain and
market knowledge
allow us to develop
cost-effective product
solutions that exceed our
customers' expectations.*

Who we are

In the early twentieth century Rencol developed engineered plastic solutions ranging from electric car batteries and recharging stations to the plastic "Joylight" internal combustion engine.

By the 1970s our focus on components had emerged and the Rencol name became synonymous with high quality plastic knobs, handles and handwheels.

Today, we continue to grow, adapt and innovate:

- Our product range is extensive, industry-standard and growing.
- Our manufacturing partners are in key international locations, each chosen for their expertise, compatibility with our values and cost effectiveness.
- Our distribution network is worldwide and expanding.
- Our global supply chain has been in successful continuous operation for over a decade.

We are here to help

Exceptional customer service is central to our company philosophy. Our customer service team, on-site engineers, product designers and supply chain experts are here to advise and assist at all stages of the purchase and fulfilment process.

Call or email to:

- Check price and availability
- Make technical queries and request product advice
- Request samples
- Place and progress your order
- Request CAD drawings

Visit our website to:

- Request a quotation
- View product specifications and MOQs
- Find your local distributor
- Request CAD drawings
- Request a catalogue

Tel: +44 (0) 117 916 0090

Fax: +44 (0) 117 982 2235

Email: sales@rencol.com

Website: www.rencol.com

Office opening hours:

Monday to Friday

8.30 AM to 5.00 PM (GMT)



Nick Dowden, 30 years with Rencol.
Customer Service Manager

Index

Technical Specifications & Key

Material performance data, tolerances, colour options, quality certifications and product icon key.



Page 5

Model 01V BH Nylon Bridge Handle

Page 6



Model 01C BH Nylon Bridge Handle

Page 7



Model 02 BH Nylon Bridge Handle

Page 8



Model 03 BH Nylon Bridge Handle

Page 9



Model 04 BH Nylon Bridge Handle

Page 10



Model 05 BH Nylon Bridge Handle

Page 11



Model 06 BH Nylon Bridge Handle

Page 12



Model 07 BH Nylon Bridge Handle

Page 13



Model 08V BH Powder Coated Aluminium Bridge Handle

Page 14



Model 08C BH Powder Coated Aluminium Bridge Handle

Page 15



Model 09 BH Nylon Bridge Handle

Page 16



Model 10 BH Duroplast Bridge Handle

Page 17



Model 11 BH Chrome Plated Steel Bridge Handle

Page 18



Model 12 BH
Silver Anodised
Aluminium Bridge Handle

Page 19



Model 13 BH
Matt Anodised
Aluminium Bridge Handle

Page 20



Model 14 BH
Matt Anodised
Aluminium Bridge Handle

Page 21



Model 15 BH
Stainless Steel Polished
Bridge Handle

Page 22



Model 16 BH
Nylon Safety Handle

Page 23



Model 17 BH
Aluminium Ledge Handle

Page 24



Model 18 BH
Nylon Bridge Handle

Page 25



Model 19 BH
Chrome Plated Steel
Bridge Handle

Page 26



Model 20 BH
Nylon Bridge Handle

Page 27



Model 21 BH
Polished Steel Bridge Handle

Page 28



Model 22 BH
Steel Bow Bridge Handle

Page 29



Model 23 BH
Steel Bow Bridge Handle

Page 30



Model 24 BH
ABS Snap-in Pull Handle

Page 31



Model 25 BH
ABS Two-part Flush Fit Pull Handle

Page 32



Technical Specifications & Key

Thermoplastic

Material: Nylon 6 + Polypropylene (PP)

Working temperatures: Nylon up to 130°C peak and 80°C continuous use. Polypropylene maximum 70°C.

Resistant to: alcohols, esters, aromatic hydrocarbons, dilute alkalis, ketones, oils, fuels, grease, fats, weatherability (including UV light - excludes coloured Nylon) and salt water.

With PP also avoid halogenated hydrocarbons and flammable materials (can hold static charge).

Reinforced Thermoplastic

Material: Nylon 6 glass filled

Working temperature: up to 180°C peak, 110°C continuous use.

Resistant to: alcohols, esters, aromatic hydrocarbons, dilute alkalis, ketones, oils, fuels, grease, fats, weatherability (including UV light) and salt water.

Duroplast

Material: Phenolic Based Duroplast (PF)

Working temperature: -30°C to 160°C

Resistant to: diluted mineral acids, alcohols, chlorinated hydrocarbons, aromatic hydrocarbons, detergents, grease, oils, weatherability (including UV light). Avoid high pressure or high impact loads (can shatter).

Soft-Touch Mouldings

Material: Polypropylene substrate, TPE over-mould. Rencol has standard parts already available in this design, used particularly extensively in both industrial and special needs market products.

Brass

Material: BS2874 CZ121. Especially recommended for any materials likely to have continued exposure to temperatures below -30°C, where most steel grades become brittle. Also used as a marine grade material when nickel plated.

Zinc Plated Steel

Material: EN1A leaded-bright zinc passivated.

Stainless Steel

Material: Standard grade is 304. For medical, catering or marine use recommended grade is 316 - has high chloride resistance.

Aluminium

Grades are 6061 and A380. Others available on request.

Colours

Colour options include black, red, yellow, green, blue, white and grey. Other colours are available on request. If you would like to see the colours before ordering, samples can be provided free of charge.

Thread Depths

Wherever possible thread depths are a minimum of 1.5 x the diameter of the thread.

Tolerances

In general, our products are produced to the following tolerances:

Bore sizes: $\pm 0.1\text{mm}$ (0.004in)

Outside dimensions: $\pm 0.5\text{mm}$ (0.020in)

Male thread length: $\pm 1\text{mm}$ (0.040in)

Tightening Torque

All tightening torques are to Standard 0.5T, which assumes a metal screw fixed into a non-metallic substrate. If the mode of employment is metal to metal assume the tightening force should be double this value.

Mounting Hardware








Screw shear values are calculated on the basis of the largest metric screw which will fit the bore.

Load Values

Axial loads are parallel to the hinge pin. Radial loads are perpendicular to it.

All values are approximate and for guidance only.

Key

-  **Colour options** - RAL colours on request.
-  **Heavy duty** - Particularly hard wearing item.
-  **Stainless steel** - Partly or totally stainless steel.
-  **Fixing from above**
-  **Fixing from below**
-  **Multi component build** - Assembly available.
-  **Soft touch** - TPE over mould. Oil resistant.



Rencol Components is **ISO 9001:2015 Certified**
Our components are **REACH & RoHS Compliant**



Fixing type

Plain bores for fixing with bolts from above.

Material

Reinforced nylon (15% glass filled PA6)

Standard handle colour

Black

Finish

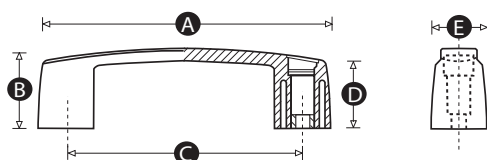
Matt

Cap colours

Black caps as standard. Also available with caps in red, grey, white, blue, green, yellow or orange on request. (MOQs apply).

Thread

Moulded bore



Part No.	A	B	C	D	E	Bore size (mm)
7758Z	120	35	93	29	26	6.5
7733P	145	40	117	34	29	8.5
7765T	163	45	132	38	31	8.5
7797X	213	50	179	42.5	35	8.5



Fixing type

Threaded inserts for fixing with screws from below.

Material

Reinforced nylon (15% glass filled PA6)

Standard handle colour

Black

Finish

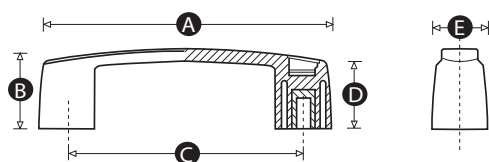
Matt

Cap colours

Black caps as standard. Also available with caps in red, grey, white, blue, green, yellow or orange on request. (MOQs apply).

Thread

Brass inserts



Part No.	A	B	C	D	E	Thread size
7759V	120	35	93	29	26	M6
7760R	120	35	93	29	26	M8
7762U	145	40	117	34	29	M6
7761Y	145	40	117	34	29	M8
7798T	163	45	132	38	31	M6
7800W	163	45	132	38	31	M8
7999S	213	50	179	43	35	M8
7799P	213	50	179	43	35	M10
7801S	213	50	179	43	35	M12



Fixing type

Plain bores for fixing with bolts from above.

Material

Reinforced nylon (15% glass filled PA6)

Standard handle colour

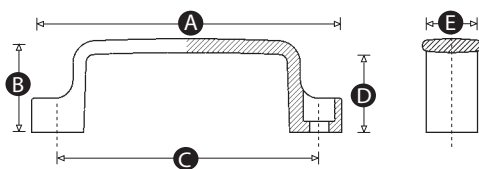
Black

Finish

Matt

Thread

Moulded bore



Part No.	A	B	C	D	E	Bore size (mm)
9937V	110	36	94	30	21	6.5
9938R	137	41	117	35	27	8.5
9939Y	153	45	132	38	27	8.5
9940U	200	50	179	42	29	8.5



Fixing type

Plain bores for fixing with bolts from above.

Material

Reinforced nylon (15% glass filled PA6)

Standard handle colour

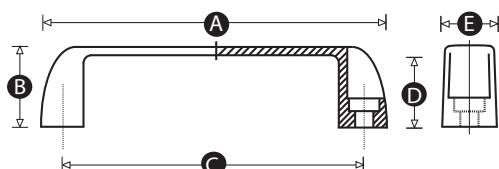
Black

Finish

Matt

Thread

Moulded bore



Part No.	A	B	C	D	E	Bore size (mm)
11122W	111	35	94	29	22	6.5
11123S	140	41	117	34	26	8.5
11124Z	154	45	132	38	27	8.5
11125V	205	50	179	43	31	8.5
11126R	250	50	225	43	31	8.5



Fixing type

Threaded inserts for fixing with screws from below.

Material

Reinforced nylon (15% glass filled PA6)

Standard handle colour

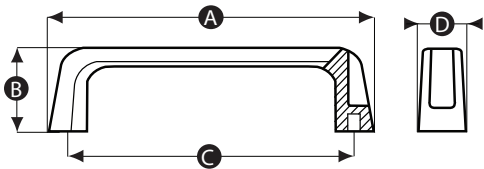
Black

Finish

Matt

Thread

Brass inserts



Part No.	A	B	C	D	Thread size
12587Z	137	42	117	23	M5
12549X	180	46	160	27	M6



Fixing type

Plain bores for fixing with bolts from above.

Material

Reinforced nylon (15% glass filled PA6)

Standard handle colour

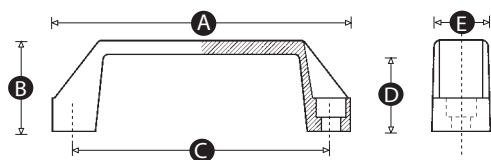
Black

Finish

Matt

Thread

Moulded bore



Part No.	A	B	C	D	E	Bore size (mm)
15530Q	134	41	117	35	26	6.5
4255Q	134	41	117	35	26	8.5



Fixing type

Hexagonally countersunk bore for fixing with bolts from above.

Material

Nylon

Standard handle colour

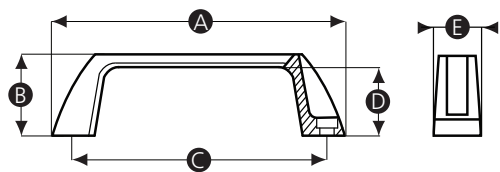
Black

Finish

Matt

Thread

Hexagonally countersunk moulded bore



Part No.	A	B	C	D	E	Bore size (mm)
12559Q	140	40	120	33	28	6.5
12560X	170	48	150	40	28	6.5



Fixing type

Threaded inserts for fixing with screws from below.

Material

Reinforced nylon (15% glass filled PA6)

Standard handle colour

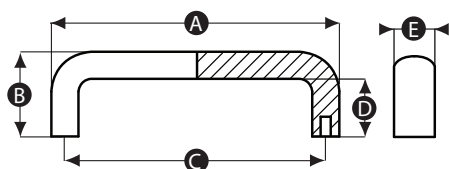
Black

Finish

Matt

Thread

Brass inserts



Part No.	A	B	C	D	E	Thread size
12550T	107	41	94	29	20	M5
12551P	134	50	117	34	25	M6
12552W	137	50	120	34	25	M6
12553S	148	50	132	34	25	M6
12554Z	168	58	150	40	29	M8
12555V	197	58	179	40	29	M8



Fixing type

Plain bores for fixing with bolts from above.

Material

Powder coated aluminium

Standard handle colour

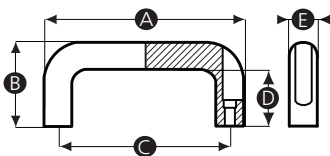
Black

Finish

Matt

Thread

Machined bore



Part No.	A	B	C	D	E	Bore size (mm)
11809Y	130	53	116	33	26	6.4
11810U	146	55	132	38	26	6.4
11811Q	178	57	164	38	26	6.4
11812X	210	57	196	38	26	6.4



Fixing type

Machined threads for fixing with screws from below.

Material

Powder coated aluminium

Standard handle colour

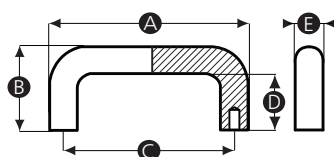
Black

Finish

Matt

Thread

Machined threads



Part No.	A	B	C	D	E	Thread size
11804W	113	47	100	33	20	M6
11805S	129	53	112	36	26	M8
11806Z	141	51	128	37	20	M6
11807V	177	57	160	38	26	M8
11808R	209	57	192	39	26	M8



Fixing type

Hexagonally countersunk bore for fixing with bolts from above.

Material

Nylon

Standard handle colour

Black

Caps

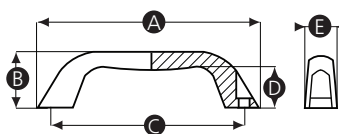
Black caps to conceal fixing head.

Finish

Matt

Thread

Hexagonally countersunk moulded bore



Part No.	A	B	C	D	Bore size (mm)
12556R	112	38	92	22	5.3
12557Y	141	38	120	24	5.3
12558U	168	44	145	28	6.5



Fixing type

Threaded inserts for fixing with screws from below.

Material

Duroplast

Standard handle colour

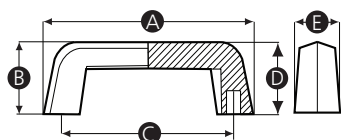
Black

Finish

Gloss

Thread

Brass inserts



Part No.	A	B	C	D	Thread size
1091P	140	46	113	30	M6
1094Y	185	60	150	40	M6
1096Q	185	60	150	40	M8



Fixing type

Machined threads for fixing with screws from below.

Material

Chrome plated steel

Finish

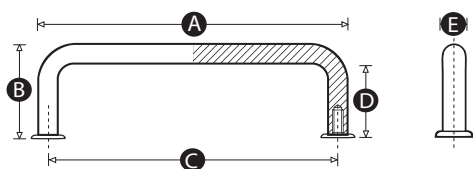
Polished

Includes

This product comes complete with nickel plated dress rings, screws and washers.

Thread

Machined threads



Part No.	A	B	C	D	E	Thread size
5436R	93	24	88	19	5	M3
5437U	96	33	88	25	8	M4
5438X	104	33	96	25	8	M4
5439P	128	33	120	25	8	M4
5440V	130	41	120	31	10	M5
5441Y	190	41	180	31	10	M5
5442Q	245	41	235	31	10	M5



Fixing type

Machined threads for fixing with screws from below.

Material

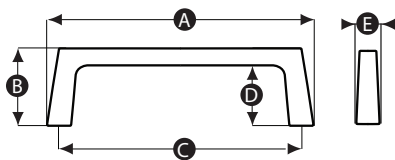
Silver anodised aluminium

Finish

Anodised

Thread

Machined threads



Part No.	A	B	C	D	E	Thread size
12546Y	110	32	100	25	11	M6
12547U	140	50	125	40	15	M6
12548Q	148	40	130	30	19	M6



Fixing type

Machined threads for fixing with screws from below.

Material

Matt anodised aluminium

Standard colour

Black

Finish

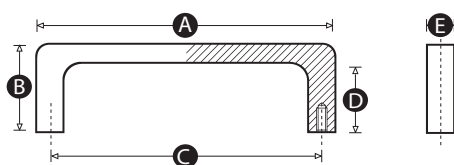
Anodised

Includes

This product comes complete with screws and washers.

Thread

Machined threads



Part No.	A	B	C	D	E	Thread size
5418X	67	40	55	32	12	M5
5420V	100	40	88	32	12	M5
5421Y	132	40	120	32	12	M5
5422Q	192	40	180	32	12	M5
5423T	247	40	235	32	12	M5



Fixing type

Machined threads for fixing with screws from below.

Material

Matt anodised aluminium

Standard colour

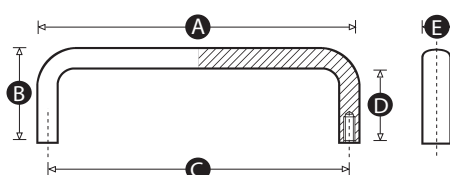
Black or silver

Finish

Anodised

Thread

Machined threads



Part No.	A	B	C	D	E	Thread size	Colour
5424W	63	40	55	32	12	M5	Black
5425P	63	40	55	32	12	M5	Silver
5426R	96	40	88	32	12	M5	Black
5427U	96	40	88	32	12	M5	Silver
5428X	108	40	100	32	12	M5	Black
5429P	108	40	100	32	12	M5	Silver
5430V	128	40	120	32	12	M5	Black
5431Y	128	40	120	32	12	M5	Silver
5432Q	188	40	180	32	12	M5	Black
5433T	188	40	180	32	12	M5	Silver
5434W	243	40	235	32	12	M5	Black
5435P	243	40	235	32	12	M5	Silver



Fixing type

Welded base plate with machined threads for fixing with screws from below.

Material

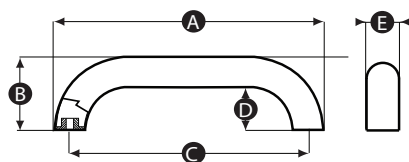
Stainless steel

Finish

Electro polished

Thread

Machined threads



Part No.	A	B	C	D	E	Thread size
12562P	220	60	195	35	25	M6
12563W	325	75	300	50	25	M6



Fixing type

Plain bores for fixing with bolts from above.

Material

Nylon (PA6)

Standard colour

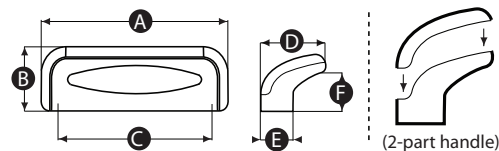
Black base + black cover or orange base + black cover

Thread

Moulded bore

Info

This handle consists of 2 parts: a base and a cover.



Part No.	A	B	C	D	E	F	Bore size (mm)	Cover + Base Colour
14107V	116	35	96	40	20	24	6.5	Black + Orange
14108R	116	35	96	40	20	24	6.5	Orange + Black



Fixing type

Machined threads for fixing with screws from below.

Material

Anodised aluminium

Standard colour

Silver

Finish

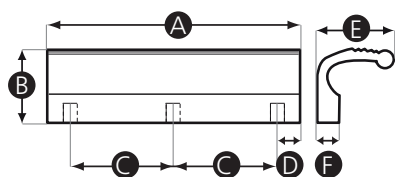
Matt

Thread

Machined threads

Options

This handle can be produced to custom lengths. (MOQs apply).



Part No.	A	B	C	D	E	F	Thread size
11835T	110	32	45	10	33	10	M6
11836P	140	32	60	10	33	10	M6



Fixing type

Plain bores for fixing with bolts from above.

Material

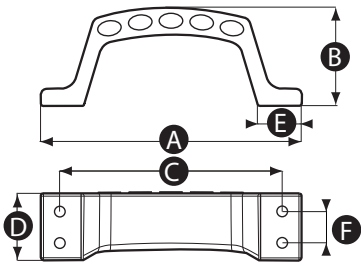
Nylon

Thread

Moulded bore

Info

This heavy duty handle features a flat edge with protuding areas for extra grip. When mounted on a wall or vertical surface it is suitable for a foot step application.



Part No.	A	B	C	D	E	F	Bore size (mm)
12561T	162	63.5	140	42	27	20	6.5



Fixing type

Male threads with nuts for fixing from above.

Material

Chrome plated steel

Finish

Highly polished

Thread

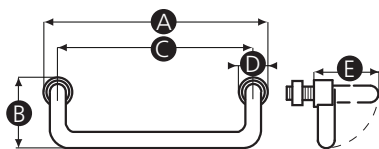
Male thread

Thread material

Zinc plated steel

Info

This handle has a 90° folding action. For use where minimal protrusion is required.



Part No.	A	B	C	D	E	Thread size	Thread length (mm)
11801X	116	42	100	16	51	M10	15
11802T	138	42	120	18	51	M10	15
11803P	198	42	180	18	51	M10	15



Fixing type

Plain bores for fixing with bolts from above.

Material

Reinforced nylon (15% glass filled PA6)

Standard handle colour

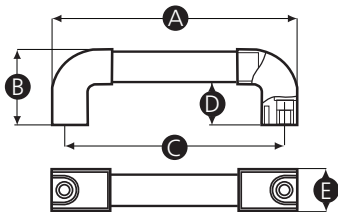
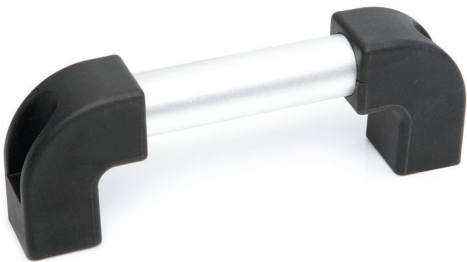
Black ends and silver metal tube.

Finish

Matt

Thread

Moulded bore



Part No.	A	B	C	D	E	Bore size (mm)
14281S	232	78	210	44	41	10
14282Z	274	78	250	44	41	10



Fixing type

Machined threads for fixing with screws from below.

Material

Stainless steel

Finish

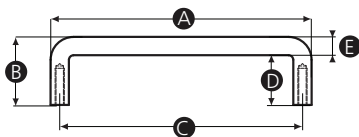
Polished

Thread

Machined thread

Includes

Stainless steel fixing screws



Part No.	A	B	C	D	E	Thread size
15539Y	114	30	106	22	8	M4



Fixing type

Machined threads for fixing with screws from below.

Material

Powder coated aluminium

Colour

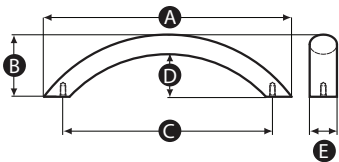
Black

Finish

Textured matt

Thread

Machined thread



Part No.	A	B	C	D	E	Thread size
14128Z	227	57	192	39	25	M4

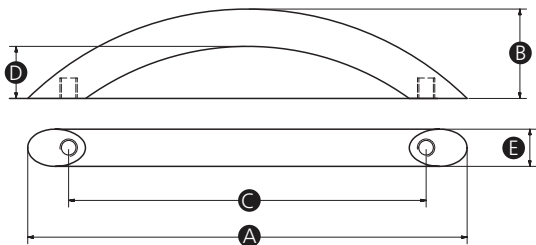


Material

Chrome plated steel

Finish

Highly polished



Part No.	A	B	C	D	E	Thread size
15901R	118	24	96	14	10	M4
15902R	151	30	128	20	10	M4

Fixing type

Quick fit, one piece, snap-in flush fitting

Material

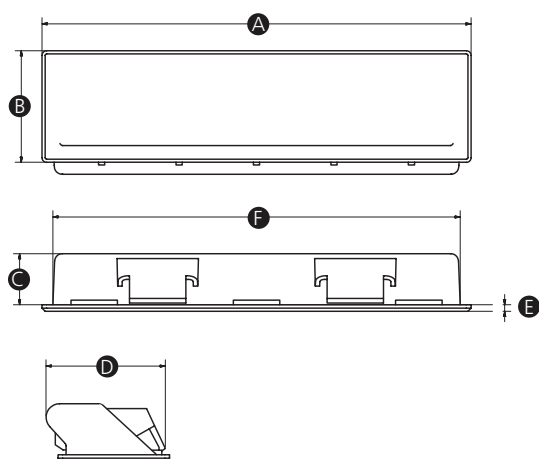
ABS

Finish

Textured matt

Colour

Black



Part No.	A	B	C	D	E	F	Panel thickness
16052S	93	36	16.5	38.2	2	87	1.0 -1.4
16053Z	93	36	16.5	38.2	2	87	1.4 -1.8
16054V	139	36	16.5	38.5	2	132	1.0 -1.4
16051W	139	36	16.5	38.5	2	132	1.4 -1.8

Fixing type

Quick fit, two piece, flush fitting. Complete with screws for assembly.

Material

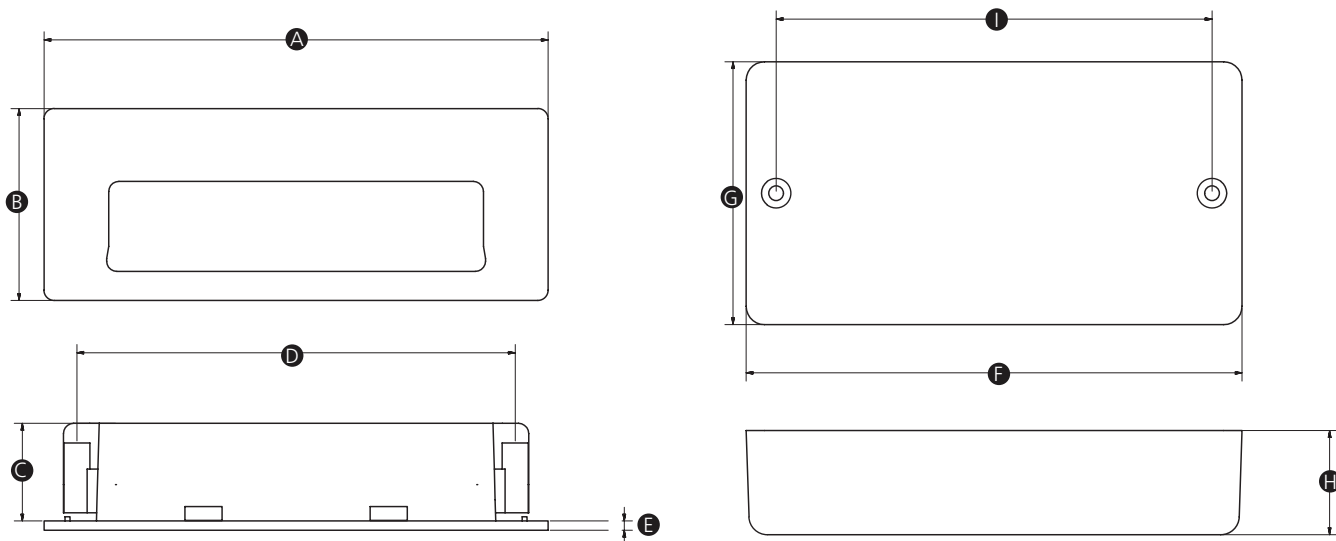
ABS

Colour

Black

Finish

Textured matt



Part No.	A	B	C	D	E	F	G	H	I	Bore size
16049T	124	47	24	107	2.3	122	64	25.5	107	3.7

Modifications & Custom Components

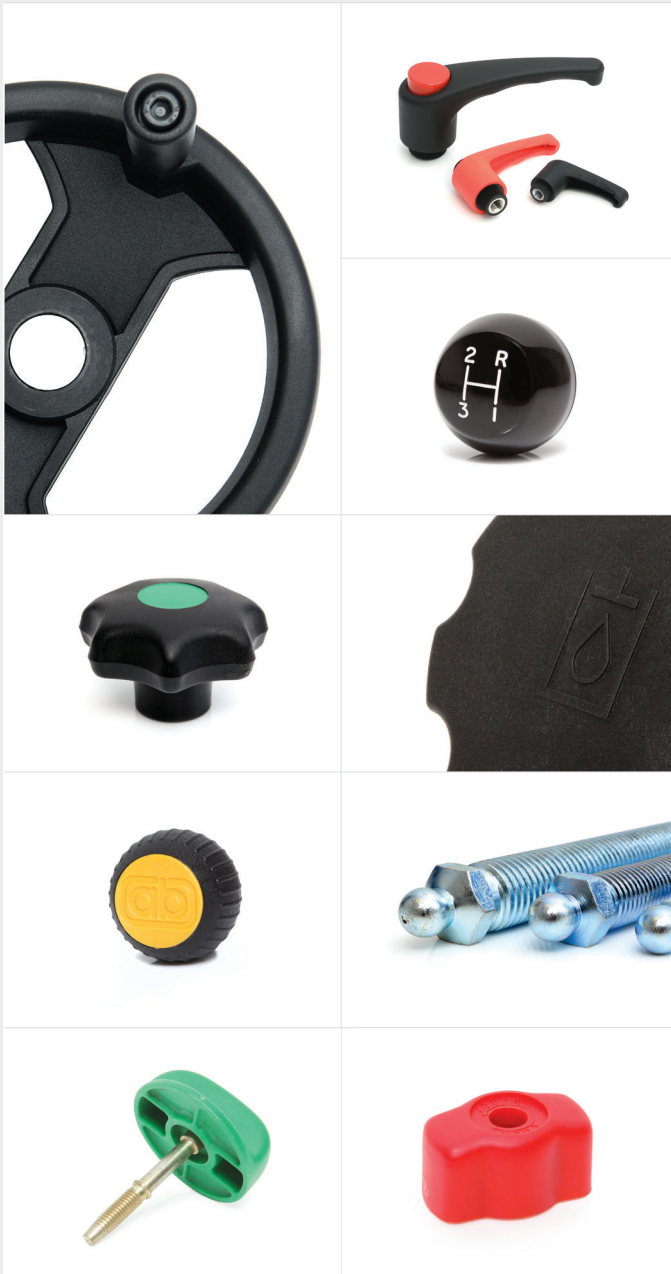
Diverse manufacturing capabilities and experienced on-site technical personnel allows Rencol Components to offer a wide range of product modifications and custom product solutions. We regularly adapt standard components or manufacture custom products to suit our customers' specific requirements. New tooling can be produced quickly and cost effectively with a typical MOQ of just 500 pieces.

Manufacturing Processes

Plastic & Metal Injection Moulding / Die casting / Machining / Forging / Stamping / Rapid Prototyping / 3D Printing

Modifications & Custom Options

Thread size & length / RAL Colours / Engraving / Pad-Printing & Screen-Printing / TPE Over mould / Materials / Finishes / Logos





Rencol COMPONENTS

Head Office (UK):

Unit 2 Avonbridge Trading Estate
Atlantic Road
Avonmouth
Bristol BS11 9QD
United Kingdom

Tel: +44 (0) 117 916 0090

Fax: +44 (0) 117 982 2235

Email: sales@rencol.com

Website: www.rencol.com

Office opening hours:

Monday to Friday
8.30 AM to 5.00 PM (GMT)