



Plus Option to your Breast!

SUBUNI BREAST PACK



www.SUBUNI.co.kr

COMPANY INTRODUCE

Our company, **Merlin**, is a company established in 14. Dec 2018 with breast pack for women. We have launched a brand “**SUBUNI**” to make more easily approachable to customers with the product, breast pack.

Our product is for healing and managing tired breast due to various undergarments, which has main functions such as moisturizing, beautifying, tightening, soothing the breast. Executives and staffs of Merlin have worked at cosmetics industry for several years and make sales plan with selecting marketing targets after grasping the trend and customer needs.

We've already checked the purchase intention of owners of aesthetic shops in Gangnam Seoul only after sample test and Massage chains also shows hot response, they offered unit price for high-volume purchase.

To make it easier and cheaper for women to get breast management, which all women might consider, we've made breast pack focusing on accessibility and usability to lower the unit price but raise the efficacy.

Like a mast pack, making the breast pack easy and simple to access it advantage and goal of our product.

Freedom and healing to women breast. This is a product that we designed it with our heart and soul to become a Must-have-item for managing breast of women in the world. We will try our best to promote and raise our product recognition from domestic to abroad as a startup enterprise.



SUBUNI BREAST PACK

Special healing time when tightening and whitening my breast everyday with '**SUBUNI**' breast pack after taking off the stuffiness of brassiere which starts and ends daily life with me.

Tightening, Whitening, and moisturizing at the same time! Just like a daily vitamins, my breast can be cared daily.



'**SUBUNI**' breast pack that main components such as GIGA WHITE, hydrolyzed collagen, root of Anemarrhena asphodeloides Bunge extract boast high moisture, high elasticity is a certified product for improving wrinkles and whitening effect. Specifically homecare it-item '**SUBUNI**' presents good price for women to manage their breast at home easily and constantly.

Reasonable confidence of '**SUBUNI**' which draws elasticity naturally without irritates breast skin. Experience change of elasticity of bust over time.



Sheet

Pure cotton 40 LOHAS certified

Hydrolyzed Collagen (Moisturizing)

By providing conditioning and water, it makes skin moist and vibrant and help to make skin healthy. By involving in tightening tired and sagging skin due to aging, it helps to care skin fresh and healthy.

Anemarrhena Asphodeloides Root Extract (Tightening)

Root of anemarrhena asphodeloides bunge extract included in Volufiline helps to vitalizes fat cell. It is used as main component of functional cosmetics for tightening, wrinkle prevention.

ALPAFLOR® GIGAWHITE(25,000ppm) (Whitening)

With targeting multiple steps of skin pigmentation process, it affects to melanogenesis and prevent melanin to upper layer of skin. It gradually improves skin color with excellent brightening effect and makes skin bright and even.

SUBUNI BREAST PACK

Product Competitiveness

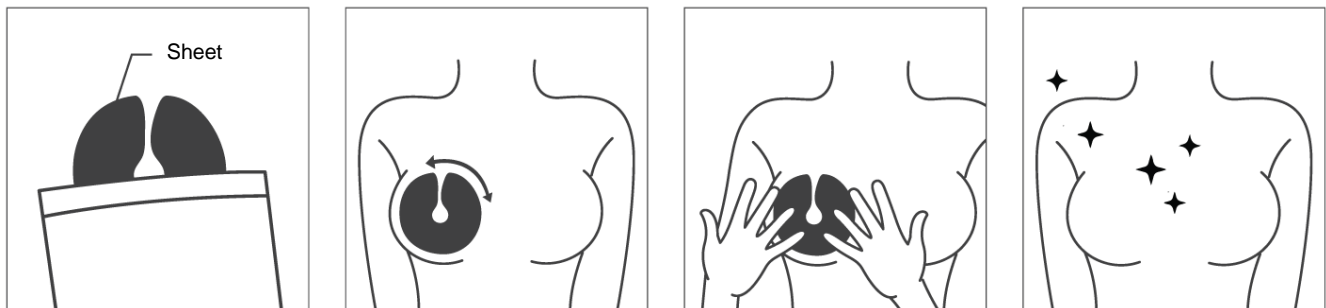
We've developed product in concept that can be used easily with low unit cost like daily mask pack instead of promoting product effect exaggeratedly.

PRODUCT FORMULA

NO	Raw Material Name	CAS No.	Function	SPEC
1	Water		solvent	ICID
2	Sorbitol	3959-53-3		ICID
3	Methylpropanediol	2163-42-0		ICID
4	Dipropylene Glycol	110-98-5		ICID
5	Propylene Glycol	57-55-6		ICID
6	Glycerin	56-81-5	humectant	ICID
7	Niacinamide	98-92-0		ICID
8	Betaine	107-43-7	humectant	ICID
9	Trehalose	6138-23-4		ICID
10	Sodium Hyaluronate	9067-32-7	humectant	ICID
11	Phenoxyethanol	122-99-6		ICID
12	Hydroxyethylcellulose	9004-62-0		ICID
13	Polysorbate 80	9005-65-6		ICID
14	Anemarrhena Asphodeloides Root Extract	-		ICID
15	Punica Granatum Fruit Extract	284-646-0		ICID
16	Honey Extract	91052-92-5		ICID
17	Hydrolyzed Elastin	100085-10-7		ICID
18	Broussonetia Extract			ICID
19	Malva Sylvestris (Mallow) flower / leaf / stem extract	84082-57-5		ICID
20	Mentha Piperita (Peppermint) leaf extract	84082-70-2		ICID
21	Primula Veris flower extract	84787-68-8		ICID
22	Alchemilla Vulgaris flower / leaf / stem extract	84695-94-3		ICID
23	Veronica Officinalis flower / leaf / stem extract	85117-19-7		ICID
24	Melissa Officinalis leaf extract	84082-61-1		ICID
25	Achillea Millefolium flower / leaf / stem extract	84082-83-7		ICID
26	Allantoin	97-59-6	humectant	ICID
27	Carbomer	9003-01-04	viscosity increasing agents	ICID
28	Lavandula Spica (Lavender) Flower Oil	-		ICID
29	Disodium EDTA	139-33-3	humectant	ICID
30	Acetyl Hexapeptide-8	616204-22-9		

SUBUNI BREAST PACK

Usage



- ① Take out breast pack from pouch and remove one sheet from both sheets.
(Same with opposite breast pack.)
- ② Put nipple in the center of the hole and place sheet in desired direction.
- ③ Press sheet according to shape of breast evenly.
- ④ Relax for 15~20 mins and make sure essence is absorbed into breast.
※ You can massage your breast after with left essence.

Main Components



Linear-leaf Spike
Speedwell-
GIGA White



Honey Extract



Paper mulberry Extract



Mallow Extract



Lavender Extract



Cowslip-GIGA White



Leaf of lemon balm-
GIGA White



Lady's Mantle
Extract



Marlow
-GIGA White



Bergamot Oil



Yarrow
-GIGA White



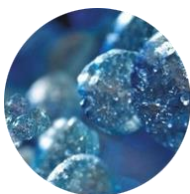
Peppermint
-GIGA White



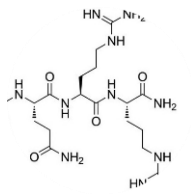
Pomegranate Extract



Alchemilla Vulgaris-
GIGA White



Sodium Hyaluronate



Acetyl Hexapeptide-8



Anemarrhena
Asphodeloides
Root



Primula Veris Extract



www.SUBUNI.co.kr

Merlin Company

#401,5 Floor, 2 Hwanggeum-ro, Wonju-si, Gangwon-do, 26462, Republic of Korea

T. +82-33-813-4008 **F.** +82-33-813-4009 **E.** merlin401@naver.com