

# SOQU

# PRODUCTS

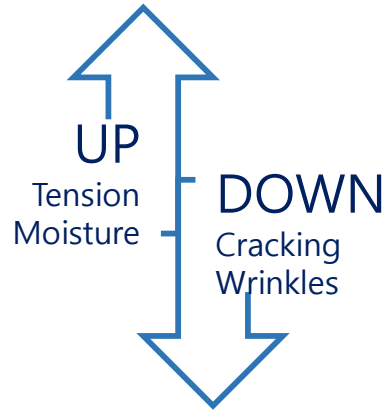


G1 BIO Co., Ltd.

- Address : 30, Bogateo 1-gil, Seo-myeon, Chuncheon-si, Gangwon-do, Republic of Korea
- E-mail : [g1bioltd@gmail.com](mailto:g1bioltd@gmail.com), [kurt1025@daum.net](mailto:kurt1025@daum.net)
- Tel : +82-10-9228-3582

# SOQU Lifting Up Face Mask

10 Minutes Miracle



- ✓ Lifting Care
- ✓ Moisturizing
- ✓ Pore Care
- ✓ Tension Care



+Bladderwrack Ig  
+Allheal

7 FREE

- ✓ Triethanolamine
- ✓ Paraben
- ✓ Sulfate
- ✓ Xanthan Gum
- ✓ Mineral Oil
- ✓ Oxybenzone
- ✓ Artificial Coloring

# SOQU Lifting Up Face Mask

## How To Use



**Step 2**



**Step 3**

## Step 1

After washing the face, arrange the skin texture with toner.

## Step 2

Use a spatula to spread the contents to the face and neck in a thin evenly.

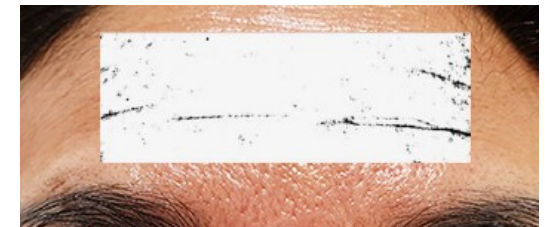
## Step 3

After 7 to 14 minutes, rinse with lukewarm water when it is completely dried.

## Before Use



## After Week



# SOQU V-Line Dual Mask Kit

1 Week Intensive Skin Care Program



- ✓ Moisturizing
- ✓ Elasticity
- ✓ Lift-Up
- ✓ Anti-Wrinkle & Whitening

*Anti-wrinkle improvement  
and whitening effect*



+ Bio Peptide(EGF, IGF, FGF)  
+ Plant Stem Cell

*Moisturizing  
and refreshing skin*



# SOQU V-Line Dual Mask Kit

## 3 Step Mask Pack for Intensive Skin Improvement



Step 2



Step 3



### Step 1

Apply the spot serum to your skin around eyes, lips and other zone that looks saggy and wrinkled. Massage gently until it gets fully absorbed deep into the skin.

### Step 2

Apply the natural cellulose mask, evenly across your upper face.

### Step 3

Hook the Lift-up 4D Patch, patented PVP hydrogel patch with highly moisturizing effect, to both ears across your chin. The recommended duration is 20 to 30 minutes. After peeling off the mask sheet, dab the residue of concentrated solution lightly with fingers.

SOQU

## Bio Peptide Face Cream-W



80ml

Formulated with **Bio Peptide Complex** and **Plant Stem Cell Extract**, this cream soothes your skin and helps to protect the moisture and nutrition needed to maintain an even skin tone.

**Adenosine** and **Niacinamide** helps to boost elasticity of the skin and enhance skin resilience. The Cream helps skin to lock moisture from deep inside, and makes the surface appear firm but hydrated.

### How To Use

Apply as the last step of your skincare routine. Massage until it absorbs completely. Apply more cream to the sensitive areas of the face.



# SOQU

## No-Sebum

### Control Powder



5g

The double sebum-control system controls the secretion of sebum to keep the skin soft and fresh all day long.

### Tips!

Face – Make Up Fixer  
Hair - Dry Shampoo  
Eye & Lips - Primer

- ✓ Soluble Collagen
- ✓ Hordeum Vulgare Leaf Extract
- ✓ Sea Water
- ✓ Centella Asiatica Extract

### How To Use

In the last stage of skin care, softly apply on the entire facial area or area with excess sebum using the puff. It may be applied to set the make up or whenever skin gets oily.

SOQU Moisture

# ALOE VERA

Collagen Emulsion and Toner



300ml

Fresh **Aloe Vera Leaf Extract**, **Hordeum Vulgare Leaf Extract**, and **Deep Sea Water** makes the skin feel firm by helping to provide moisture and nourishment to dry, flaky skin. Another of its ingredients is **Collagen**, it will help to boost elasticity of the skin.

## How To Use

Spread evenly moderate amount of **Aloe Vera Collagen Toner** across starting from the center of your face. Gently tap your skin to absorption. Applying **Aloe Vera Collagen Emulsion** after using toner, gently tap skin.



SOQU Moisture

# ALOE VERA

Collagen Hydrogel Mist



150ml

**Aloe Vera Leaf Extract** and **Deep Sea Water** helps gently soothe and hydrate the skin, while delivering a refreshing sensation.

**Collagen and Hordeum Vulgare Leaf Extract** makes the skin feel firm by helping to provide moisture.

## How To Use

Spray over face with eyes closed at a distance of 20cm when the facial skin feels dry. It can be also misted over make-up.

SOQU  
Moist up  
Face Mist **ALOE**



150ml

**Aloe Vera Leaf Extract** hydrates the skin to calm down troubles,  
and **Lotus Extract** quickly removes the risk factors such as skin astringency  
and sebum, making the skin more moist and soft.

## How To Use

Spray over face with eyes closed at a distance of 20cm when the facial  
skin feels dry. It can be also misted over make-up.

SOQU Jeju Natural

# ALOE VERA

Deep Clean Foam Cleanser



120ml

Formulated with **Myristic Acid**, rich and creamy foam removes makeup leftover and impurities effectively. With **Aloe Vera Extract**, it cleanses the skin while leaving a deep moisture layer and a relaxed and smooth feeling that lasts long after cleansing.

## How To Use

Apply a small amount of product to the palm of your hand and lather. Gently massage your face and then rinse with lukewarm water.

# SOQU Deep Sea Water Moisture **ALOE VERA** Soothing Mask



23g

Enriched with **Aloe Vera Leaf** and **Hordeum Vulgare Leaf Extract**  
Delivering the ultra soothing effect for daily skin care

## Point. 01

### Deep hydration

Moisturizing essence help the skin stay healthy all day long

## Point. 02

### The quality tensile sheet with an excellent adhesiveness

It features full skin contact fitting thoroughly without losing any part of skin and delivering highly active ingredients deep into the skin.

## Point. 03

### Excellent soothing effect

It helps the skin stay healthy while calming daily fatigues.

## How To Use

1. Apply mask evenly across your face.
2. After 10~20 minutes, gently peel mask.
3. Dab your skin until the essence fully absorbed.

SOQU Deep Sea Water Moisture

# Aloe Vera

## Soothing Gel



300ml

Jeju Aloe Vera Extract and Hordeum Vulgare Leaf Extract provides relaxation for stressed skin from free radicals and UV rays, which relieves skin with excellent soothing and moisturizing effect all day long.

Deep Sea Water helps keep skin deeply hydrated with fast absorption without leaving stickiness.

### How To Use

Apply soothing gel on dry skin in the morning and evening, especially after shower.

SOQU Natural

# Tomato

## Soothing Gel



300ml

Enriched with **Tomato Extract** and **Hordeum Vulgare Leaf Extract**, SOQU natural tomato soothing gel gently calms and refreshes the skin Stimulated by the harmful environment. **Clean Deep Sea Water** gives mineral supplements for healthier skin with fast absorption without leaving stickiness.

### How To Use

Apply **soothing gel** on dry skin in the morning and evening, especially after shower.



SOQU Natural

# Snail

## Soothing Gel



300ml

Enriched Enriched with **Snail secretion filtrate**, the formulation of SOQU natural snail soothing gel protects loss of skin's natural moisture and keeps face and body mild and moist all day long with the effect of snail filtrate.

**Clean Deep Sea Water** gives mineral supplements for healthier skin with fast absorption without leaving stickiness.

### How To Use

Apply **soothing gel** on dry skin in the morning and evening, especially after shower.

SOQU Natural

# Lavender

## Soothing Gel



300ml

Enriched with **Lavender Extract**, the formulation of SOQU natural lavender soothing gel soothes troubled skin and relieves stress from harmful environment. **Clean Deep Sea Water** gives mineral supplements for healthier skin with fast absorption without leaving stickiness.

### How To Use

Apply **soothing gel** on dry skin in the morning and evening, especially after shower.

SOQU Natural

# Mango

## Soothing Gel



300ml

Enriched with **Mango Extract**, the formulation of SOQU natural mango soothing gel makes skin pure and bright preventing oxygen free radical. **Clean Deep Sea Water** gives mineral supplements for healthier skin with fast absorption without leaving stickiness.

### How To Use

Apply **soothing gel** on dry skin in the morning and evening, especially after shower.

SOQU Natural

# Pomegranate

## Soothing Gel



300ml

Enriched with **Pomegranate Extract**, the formulation of SOQU natural pomegranate soothing gel makes dull skin bright and gives good effect on exfoliation. **Clean Deep Sea Water** gives mineral supplements for healthier skin with fast absorption without leaving stickiness.

### How To Use

Apply **soothing gel** on dry skin in the morning and evening, especially after shower.

SOQU Natural

# Coconut

## Soothing Gel



300ml

Enriched with **Coconut Extract**, the formulation of SOQU natural coconut soothing gel makes skin elastic and healthy by the coconut's moisturizing nature. **Clean Deep Sea Water** gives mineral supplements for healthier skin with fast absorption without leaving stickiness.

### How To Use

Apply **soothing gel** on dry skin in the morning and evening, especially after shower.



SOQU Natural

# Charcoal

## Soothing Gel



300ml

Enriched with **Charcoal Extract**, the formulation of SOQU natural charcoal soothing gel balances skin's natural oil and moisture by absorbing harmful materials. **Clean Deep Sea Water** gives mineral supplements for healthier skin with fast absorption without leaving stickiness.

### How To Use

Apply **soothing gel** on dry skin in the morning and evening, especially after shower.



SOQU

# Rose

## FACIAL MIST



125ml

Moisturize skin with a delicate **Rose scent**

**Rose extract** helps pore care and soothes dry skin.

This micro face mist soothes skin gives moisture and softness.

### Effect

It moisturizes and soothes your skin.

### How to use

Spray onto your face from about 30cm away and dab gently with fingertips until complete absorption.

SOQU

# Rose CREAM



70g

Full of elasticity like a dewy Rose

Formulated with Rose extract, Collagen, and Bio peptide, it makes skin appear smooth and hydrated.

This cream is quickly absorbed, and keeps skin moisturized and healthy.

## Effect

It helps skin to look healthier, and gives it a youthful glow.

## How to use

Apply cream on face, etc.

SOQU

# Rose SERUM



50ml

Full of elasticity like a dewy Rose

Formulated with Rose extract, Collagen, and Bio peptide, it helps pore care and improves skin elasticity with rich nutrition.

It is applied gently and moisturizes, brightens your skin.

## Effect

It balances skin's moisture levels and improves its tone.

## How to use

Apply in the morning and in the evening to a clean skin and after toning. Dab gently with fingertips until complete absorption.

SOQU

# Vitamin C

FACIAL MIST



125ml

Fill moisture and vitality to skin with a fresh **Lemon scent**

Formulated with **Foenzyme Q10 and Ceramide**, it makes skin appear hydrated.

**Vitamin C** keeps your skin clear and bright. This micro face mist soothes skin and makes it look moisturized and soft

## Effect

It moisturizes and soothes your skin.

## How to use

Spray onto your face from about 30cm away and dab gently with fingertips until complete absorption.

SOQU

# Vitamin C

## ILLUMINATING CREAM



Your skin will look illuminated and radiant

Vitamin C keeps your skin clear and bright.

Formulated with Coenzyme Q10 and Ceramide, it will help skin to appear healthy and bright.

This serum is gentle with a fresh, light scent, and helps skin look moisturized.

### Effect

Gives skin a youthful glow.

### How to use

After using a serum, gently apply and let absorb into your skin.

SOQU

# Vitamin C

VITAL SERUM



Your skin will look illuminated and radiant

**Vitamin C** keeps your skin clear and bright. Formulated with

**Coenzyme Q10 and Cramide**, it will help skin to appear

healthy and bright. This searum is gentle with a fresh light scent, and helps skin look moisturized.

## Effect

Helps skin appear brighter and illuminated

## How to use

Apply in the morning and in the evening to a clean skin and after toning. Dab gently with fingertips until complete absorption.



SOQU

# Watermelon

FACIAL MIST



125ml

Hydrate skin with a fresh watermelon scent

Formulated with **Watermelon extract and Ceramide**, it helps skin to appear hydrated and smooth.

This micro face mist soothes skin, and makes it look moisturized and soft

## Effect

It moisturizes and soothes your skin.

## How to use

Spray onto your face from about 30cm away and dab gently with fingertips until complete absorption.

SOQU

# Watermelon

## SLEEPING MASK



70g

Moisturize your skin during the night

**Watermelon Extract** leaves skin feeling softer and refreshed.

Formulated with **Hyaluronic Acid and Ceramides**, this mask makes skin appear hydrated. After using the mask, skin will feel smooth, and no sticky residue will be left on face.

### **Effect**

Moisturizes skin while you sleep.

### **How to use**

Apply evenly to the skin as the last step of your evening skin care routine. Rinse with lukewarm water in the morning.

SOQU

# Watermelon

SERUM



Moisturize skin with a delicate rose scent

**Watermelon extract** helps skin to appear hydrated and refreshed.

Formulated with **Hyaluronic Acid and Ceramides**, this serum makes skin appear moisturized. After using the serum, skin will feel smooth, and no sticky residue will be left on face.

## Effect

It makes your skin moist while sleeping.

## How to use

Apply evenly to the skin as the last step of your evening skin care routine. Rinse with lukewarm water in the morning.

# Contact Info

- Address : 30, Bogateo 1-gil, Seo-myeon, Chuncheon-si, Gangwon-do, Republic of Korea
- E-mail : g1bioltd@gmail.com, kurt1025@daum.net
- Tel : +82-10-9228-3582