

## Committee Resource Guide



### **Jerry Fennelly, Chair**

Jerry Fennelly, Chair Owner of NAI/Fennelly Commercial Real Estate Services, Worldwide. For 31 years, Fennelly has served the Greater Princeton area, assisting and advising corporations and investors on commercial real estate matters worldwide.

[fennelly@fennelly.com](mailto:fennelly@fennelly.com)



### **Brian Juleskusky, Chair**

Member of the Business Banking team at Bank of America with 20+ years experience in providing clients a wide array of Credit, Trade, FX and Global Treasury solutions.

[brian.juleskusky@baml.com](mailto:brian.juleskusky@baml.com)



### **Ken Blackwell**

CEO, InKlaritas

Ken focuses on solving the challenges of effective leadership in global organizations and virtual teamwork across borders and time zones.

[Ken@inklaritas.com](mailto:Ken@inklaritas.com)



### **Katherine Kish**

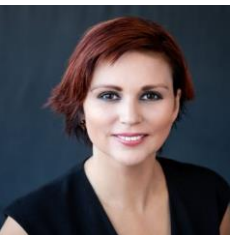
Executive Director, Einstein's Alley

Einstein's Alley, a non-profit organization, is working to make New Jersey's Einstein's Alley known as one of the key research and technology hubs within the US along with Silicon Valley and The Research Triangle and a magnet for technology business from around the world. [kkish@einsteinsalley.org](mailto:kkish@einsteinsalley.org)



### **Sharon Marnien**

Vice President of Global Human Resources for Sparta Systems, Inc., with 25+ years' experience in Human Resources in the Financial Services and Technology industries. At Sparta Systems, Sharon is responsible for the strategic planning and management of all human resources activities worldwide. Sharon has a broad-based background in a variety of Human Resources roles, primarily with organizations undergoing significant growth and change. [sharon.marnien@spartasystems.com](mailto:sharon.marnien@spartasystems.com)



### **Rufiya Blank**

Vice President, New Business Development, Kompass

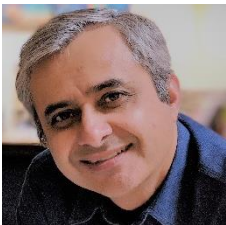
At Kompass we help companies expand into foreign markets by providing the Global Database research tool EasyBusiness and advertising in 24 languages. I believe that our Global Research, Advertising and Social Selling platforms are the future of Global business. [rb@kompass-usa.com](mailto:rb@kompass-usa.com)



**Janet Robertson**

*Commercial Officer, U.S. Commercial Service, Central/Southern New Jersey*

Janet Robertson is the Commercial Officer at the U.S. Commercial Service in Lawrenceville, covering Central and Southern New Jersey and serves on PRCC's Global Committee.



**Navin Pathak**

Senior Partner at Entry India LLC

Entry India's goal is to connect US companies with business opportunities in India and qualified resources including distributors, JV partners and service professionals.

Navin is also a publisher of ENTRY INDIA Guide (online and hardcover) that addresses practical aspects of doing business in India. [npathak@entryindia.com](mailto:npathak@entryindia.com).



**Ricardo Roman**, Director of Association Management for Caliper Management Inc.

Ricardo manages the trade association business for Caliper. Caliper is a global employee-assessment and talent-management-solutions company that helps businesses select and manage their human capital. Caliper partners with all types of organizations, industries, and sectors – from Fortune 500 companies to small businesses and from government agencies to non-profits. [rroman@calipercorp.com](mailto:rroman@calipercorp.com)



**Mark Swingle:** Our resident expert on Japan. Use his network for your sourcing or sales needs, or MSA can distribute or purchase for you. If you are already importing/exporting, Mark can see whether he could help you also work with Japan. [info@mswingle.com](mailto:info@mswingle.com)



**Cathy Scangarella**, Senior Vice President of Development for Choose New Jersey, Inc.

Responsible for overseeing new business development opportunities globally. Ms. Scangarella is a veteran of State government, having served each of the last five administrations working primarily on business retention and attraction.

[cscangarella@choosenj.com](mailto:cscangarella@choosenj.com)



**Andy Zalescik**

Mr. Zalescik is based in Princeton NJ with M&T Bank- a top 15 bank with a large NJ presence. Focus centers on middle market companies including credit and non-credit solutions, including treasury management, international trade assistance, and trust and corporate investment strategies as provided by *Wilmington Trust*.

[azalescik@mtb.com](mailto:azalescik@mtb.com)