

04

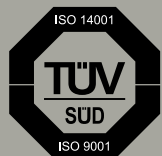
think:water
Profine®

Beverage

Being sure of the water in our home is a fundamental aspect of everyday life. We use it to drink, cook and it is essential for our bodies to function. Needless to say, water is a serious matter, and we take it seriously.

Italian manufacturer

Being sure of the water in our home is a fundamental aspect of everyday life. We use it to drink, cook and it is essential for our bodies to function. Needless to say, water is a serious matter, and we take it seriously.



tw produces with
management system
quality ISO 9001: 2015 and
environment ISO 14001: 2015
certified by TÜV SÜD



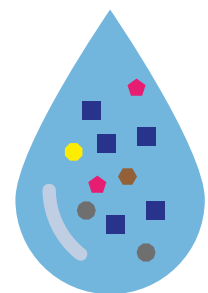
tw produces according
to MOCA food compliance



Not all water is the same



Water is a living element and as such is subject to change, it varies depending on the territory and sometimes even throughout the day. Choosing the right treatment means getting the most out of this vital resource.

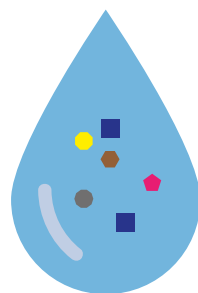


Raw water

Raw water contains high levels of sediment and can corrode, damage or clog the machine.



- VIOLET
- LILAC
- OCRA
- ZERO PROFESSIONAL
- ADDOLCITORE COMPACT

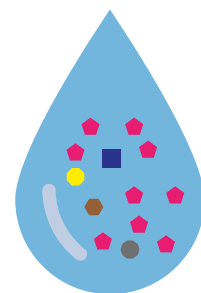


Hard water

Hard water contains high levels of calcium and magnesium.



- BLUE
- SILVER
- GOLD



Contaminated water

Contaminated water contains substances that are hazardous to health.

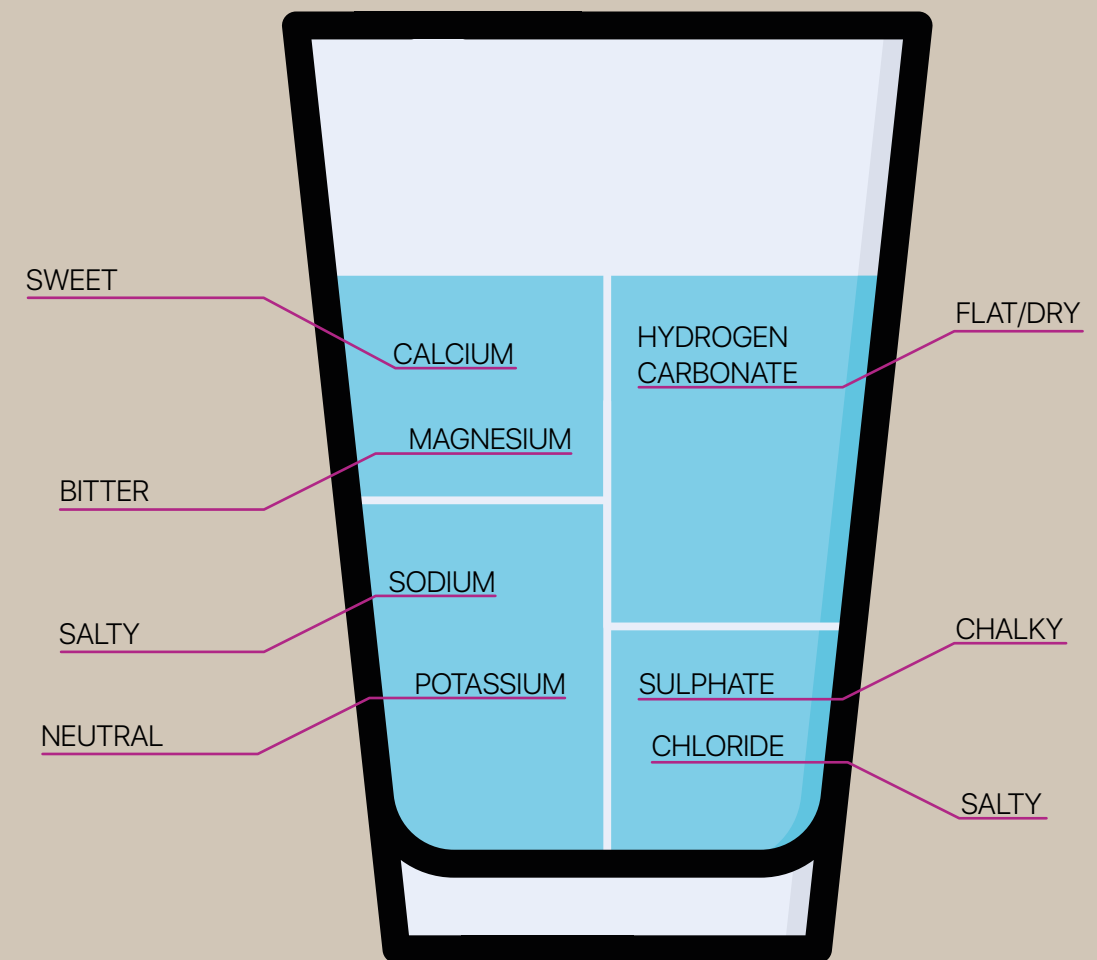


- NITRATES
- ARSENIC
- PFAS
- ZERO PROFESSIONAL

Improve the taste

Every element dissolved in the water transfers its own particular characteristic, soft, bitter, salty, and so forth.

Finding the right blend of these substances creates the perfect recipe for obtaining the best possible product, enhancing the aromas and giving your drinks an attractive appearance. Water is, after all, the main ingredient of any food.



Water treatment overview

When people think of the water that comes from the mains, they normally consider it a fixed product that cannot be altered. In reality, the quality of the water changes not only from area to area, and sometimes even from street to street, but also within the same day.

Water is part of nature, it is life, and therefore brings with it the traces of all the elements it meets along its path. It is understandable therefore that some of the substances it contains are not always desirable, good, healthy, and/or useful.

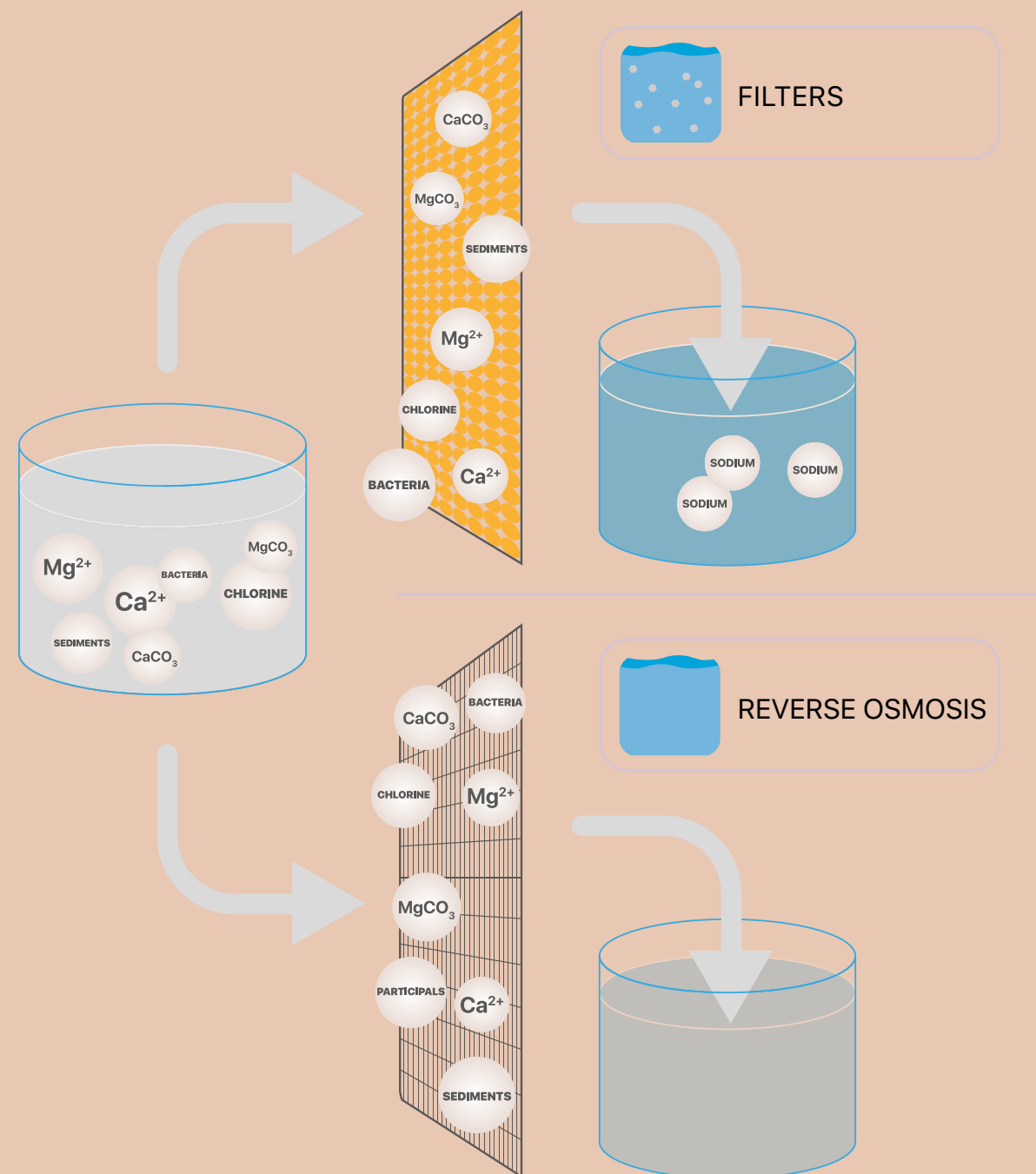
For example:

- a high concentration of dissolved minerals,
- the presence of chlorine as a disinfectant (in the mains supply),
- the presence of solid particles, such as microplastics,
- the presence of bacteria,
- a high concentration of limestone,

make the water from our mains supply less than desirable and effectively useful.



Water treatment methods.



tw

Water treatment occurs mainly in two ways

Filtration

Filters allow the mains water supply to be purified of all those substances that alter its taste and smell, or which compromise its drinkability. To control its taste and smell, activated carbon is used, such as the Carbon Block Profine, which thanks to its properties of absorption, intercepts any particulate matter and chlorine. For toxic substances on the other hand such as pfas, nitrates and arsenic, specially designed filters are used.

Reverse osmosis

Thanks to the very high degree of filtration that characterises reverse osmosis machines, it is possible to obtain water with very high quality characteristics. As the water passes through one or more membranes, it is purified not only of the elements determining its hardness, but also of all the contaminating substances causing unpleasant odours and tastes, for example.



tw

Along its path from the source
or aquifer to our taps,
the water collects numerous
substances, some of which
compromise its quality.
Filtration
protects us against any
unpleasant surprises.



01

The safety of what we drink.

Nowadays, having safe water in the home is essential, but unfortunately not a given. Even the mains water, however much more controlled than bottled water, can still be contaminated by pollutants. Domestic filtration allows us to use the water with peace of mind!

02

Water that tastes like water.

To make it drinkable, disinfectants such as chlorine and its derivatives are added to the water, which, although making it safe on one hand, alter its taste and smell on the other. Domestic filtration allows us to eliminate these substances and enjoy the water alone!

03

Respect for our planet.

It is now common knowledge that plastics are slowly suffocating the earth. We need to get past the idea, unfounded among other things, that bottled water is better than tap water. Drinking water is one of the most controlled and heavily regulated products, it is up to us to simply make it more pleasant. Domestic filtration improves its flavour and helps our planet!

04

Convenience.

Investing in a water treatment system might seem expensive, but in the long run, the benefits far outweigh the costs. The convenience of having good water on tap, the safety of using a controlled product, and not least of all, the knowledge that you're doing something useful for the planet. All aspects making beverage water treatment the choice of the future, for the future!















Products

Investing in a water treatment system might seem expensive, but in the long run, the benefits far outweigh the costs. The convenience of having good water on tap, the safety of using a controlled product, and not least of all, the knowledge that you're doing something useful for the planet. All aspects making beverage water treatment the choice of the future, for the future!

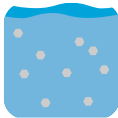


tw

-  **RED** __ p. 16
-  **BLUE** __ p. 18
-  **SILVER** __ p. 20
-  **GOLD** __ p. 22
-  **ARSENIC** __ p. 24
-  **NITRATES** __ p. 26
-  **PFAS** __ p. 28
-  **OCRA** __ p. 30
-  **VIOLET** __ p. 32
-  **LILAC** __ p. 34
-  **ZERO PROFESSIONAL** __ p. 36
-  **COMPACT** __ p. 38

Profine® Red

Water pre-treatment filter.



pre-treated
water

Profine® RED reduces turbidity in water and suspended particles with 5 micron filtration. It is a sediment cartridge for the clarification of drinking water, to be used for technological systems. Quick connect cartridge with extruded polypropylene filtration. If the cartridge is used in water treatment equipment intended for human consumption, this equipment must comply with DM 25/2012.

CODE	DESCRIPTION	FLOW RATE	CAPACITY*
Y21412B-AYE	Red Small	3 L/min	max Δp 2,5 bar
Y21411B-AYC	Red Medium	5 L/min	max Δp 2,5 bar
Y21410B-AYA	Red Large	7 L/min	max Δp 2,5 bar

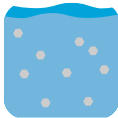
* Flow rates can also vary considerably depending on the quality of the incoming water.

Operating pressure	Min. 2 - Max. 6 bar (0.2 - 0.6 Mpa)
Temperature	Min. 4 - Max. 30°C (40 - 86 °F)



Profine® Blue

Dechlorination and clarification
drinking water.



microfiltered
water

Profine® Blue, thanks to the Profine® Carbon Block technology, reduces and removes cloudiness present in the water, as well as chlorine and any tastes and smells. Nominal filtration degree 5 µm. Complies with DM 25/2012.

- Eliminates unwanted odours and flavours
- Reduces chlorine
- Reduces the cloudiness of the water
- It guarantees extended autonomy
- Reduces the presence of any organic macromolecules

CODE	DESCRIPTION	FLOW RATE	CAPACITY*
Y21409B-AXW	BLUE Small	3 L/min	15.000 L
Y21408B-AXT	BLUE Medium	5 L/min	24.000 L
Y21407B-AXQ	BLUE Large	7 L/min	45.000 L

* The flow rates may also vary significantly depending on the quality of the inlet water.

Operating pressure	Min. 2 - Max. 6 bar (0.2 - 0.6 Mpa)
Temperature	Min. 4 - Max. 30°C (40 - 86 °F)



Profine® Silver

Microfiltration kit
with bacteriostatic action.



Profine® Silver eliminates unwanted odours and flavours, reduces chlorine, and has a nominal degree of filtration of 0.5 microns. It also has a bacteriostatic action thanks to Profine® Carbon Block. Composite cartridge suitable for the treatment of drinking water in accordance with DM 25/2012.

- bacteriostatic action
- microfiltration at 0.5 microns
- reduces chlorine, chlorocompounds and THM
- eliminates unwanted odours and flavours
- ensures extended autonomy
- removes suspended material, pesticides, herbicides and microplastics

CODE	DESCRIPTION	FLOW RATE	CAPACITY*
Y21409B-AXW	Silver Small	3 L/min	15.000 L
Y21408B-AXT	Silver Medium	5 L/min	24.000 L
Y21407B-AXQ	Silver Large	7 L/min	45.000 L
Y214504B-B24	Kit Silver Medium	5 L/min	24.000 L

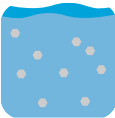
* The flow rates may also vary significantly depending on the quality of the inlet water.

Operating pressure	Min. 2 - Max. 6 bar (0.2 - 0.6 Mpa)
Temperature	Min. 4 - Max. 30°C (40 - 86 °F)



Profine® Gold

Ultrafiltration kit
with bacteriostatic action.



microfiltered
water

Profine® GOLD eliminates unwanted odors and flavors, reduces chlorine, and has a nominal filtration degree of 0.1 microns. Disposable filter with very high filtration degree that encloses and maximizes the advantages of the Profine® Carbon Block system combined with an ultrafiltration stage capable of preventing the passage of more than 99.9999% of bacteria. Composite structure filter suitable for drinking water treatment in compliance with DM 25/2012. The kit is equipped with everything needed for installation, including the tap and small parts.

- bacteriostatic action
 - microfiltration at 0.1 microns
 - reduces chlorine, chlorocompounds and THM
- eliminates unwanted odors and flavors
 - prevents the passage of 99.99% of bacteria
 - removes suspended solids, pesticides, herbicides and microplastics

CODE	DESCRIPTION	FLOW RATE	CAPACITY*
Y21406B-AXM	Gold Small	3 L/min	7.000 L
Y21405B-AXK	Gold Medium	5 L/min	10.000 L
Y21404B-AXH	Gold Large	7 L/min	15.000 L
Y21501B-B21	Kit Gold Medium	5 L/min	10.000 L

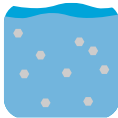
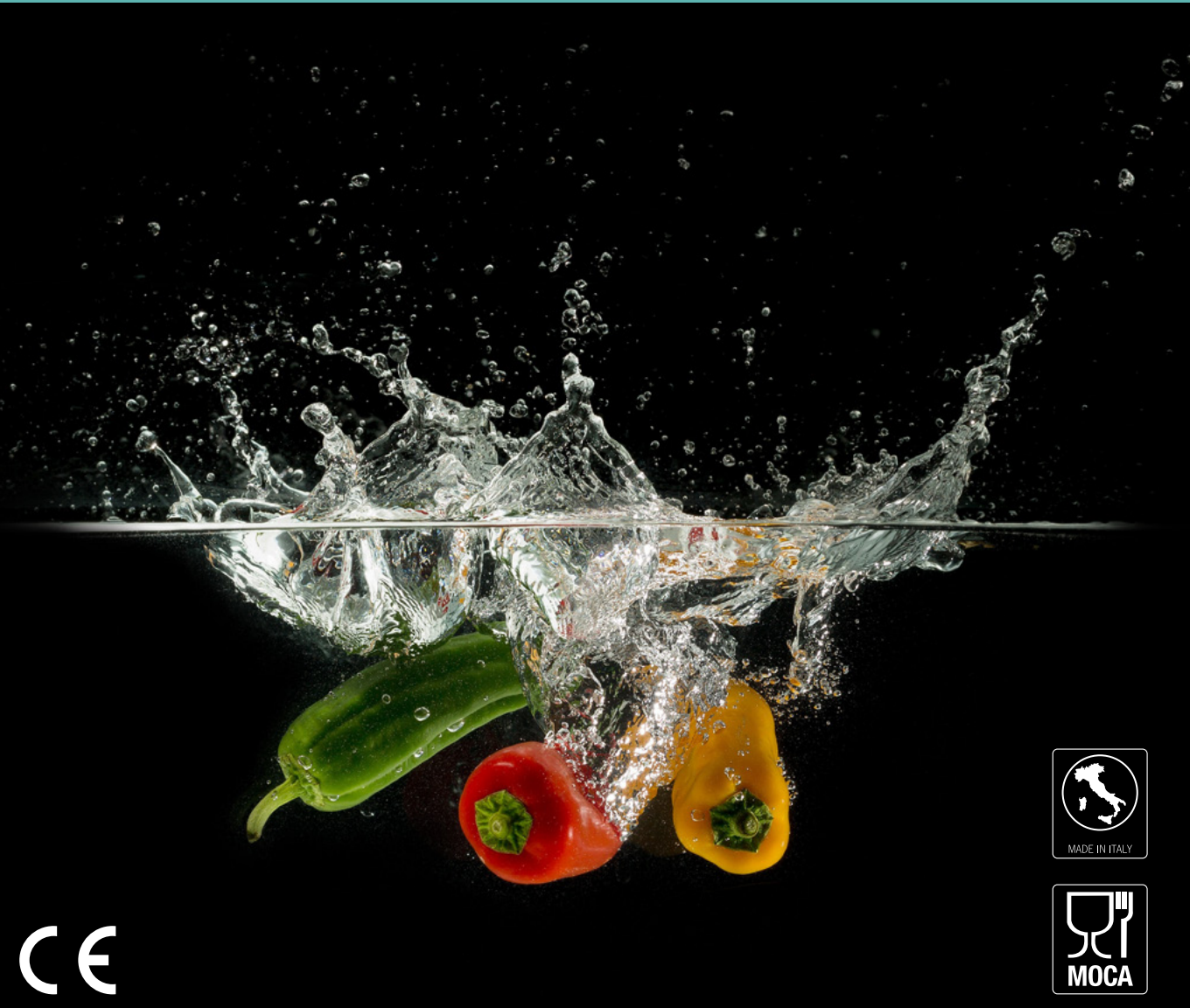
* The flow rates may also vary significantly depending on the quality of the inlet water.

Operating pressure	Min. 2 - Max. 6 bar (0.2 - 0.6 Mpa)
Temperature	Min. 4 - Max. 30°C (40 - 86 °F)



Profine® Arsenic

Filtration kit
which reduces arsenic.



microfiltered
water

Profine® Arsenic reduces the concentration of arsenic. Selective arsenic resin and final stage of 0.5 µm filtration with Profine® Carbon Block technology for bacteriostatic action. To use with arsenic concentrations up to 50 µg/l.

- Eliminates unwanted odours and flavours and reduces chlorine
- Guarantees bacteriostatic action
- Reduces the concentration of arsenic

CODE	DESCRIPTION	FLOW RATE*	CAPACITY*
Y21518B-B27	Kit Arsenic Small Profine®	1 L/min	10.000 L
Y21430B-AZ6	Arsenic Small Profine®	1 L/min	10.000 L
Y21429B-AZ4	Arsenic Medium Profine®	1,5 L/min	15.000 L
Y21428B-AZ3	Arsenic Large Profine®	2 L/min	20.000 L
PBBRP200-B3W	BIG 2.0 Arsenic Profine®	2 L/min	22.000 L
PBBRP300-B3X	BIG 3.0 Arsenic Profine®	2 L/min	33.000 L
PBBRP450-B3Y	BIG 4.5 Arsenic Profine®	2 L/min	49.500 L
PBBRP600-B3Z	BIG 6.0 Arsenic Profine®	2 L/min	66.000 L

* The capacities may vary according to the French degrees (° f) from the organoleptic properties and the flow rate of the incoming water.

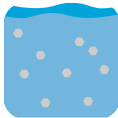
Operating pressure	Min. 2 - Max. 6 bar (0.2 - 0.6 Mpa)
Temperature	Min. 4 - Max. 30°C (40 - 86 °F)

PRODUCT
COMPLIANT
D.M. 174/2004



Profine® Nitrates

Domestic filtration kit
which reduces nitrates.



microfiltered
water

Profine® Nitrates reduces the concentration of nitrates. Selective nitrates resin and final stage of 0.5 µm filtration with Profine® Carbon Block technology for bacteriostatic action.
To use with nitrates concentrations up to 50 mg/l.

- Eliminates unwanted odours and flavours and reduces chlorine
- Guarantees bacteriostatic action
- Reduces the concentration of nitrates

CODE	DESCRIPTION	FLOW RATE*	CAPACITY*
Y21527B-B2C	Kit Nitrates Small Profine®	1 L/min	900 L
Y21443B-AZG	Nitrates Small Profine®	1 L/min	9000 L
Y21439B-AZE	Nitrates Medium Profine®	1,5 L/min	1.400 L
Y21438B-AZD	Nitrates Large Profine®	2,2 L/min	2.100 L
PBBNP200-B41	Nitrates Big 2.0 Profine®	2,3 L/min	2.200 L
PBBNP300-B42	Nitrates Big 3.0 Profine®	3,5 L/min	3.300 L
PBBNP450-B43	Nitrates Big 4.5 Profine®	5 L/min	4.950 L
PBBNP600-B44	Nitrates Big 6.0 Profine®	6,5 L/min	6.600 L

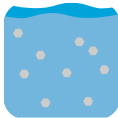
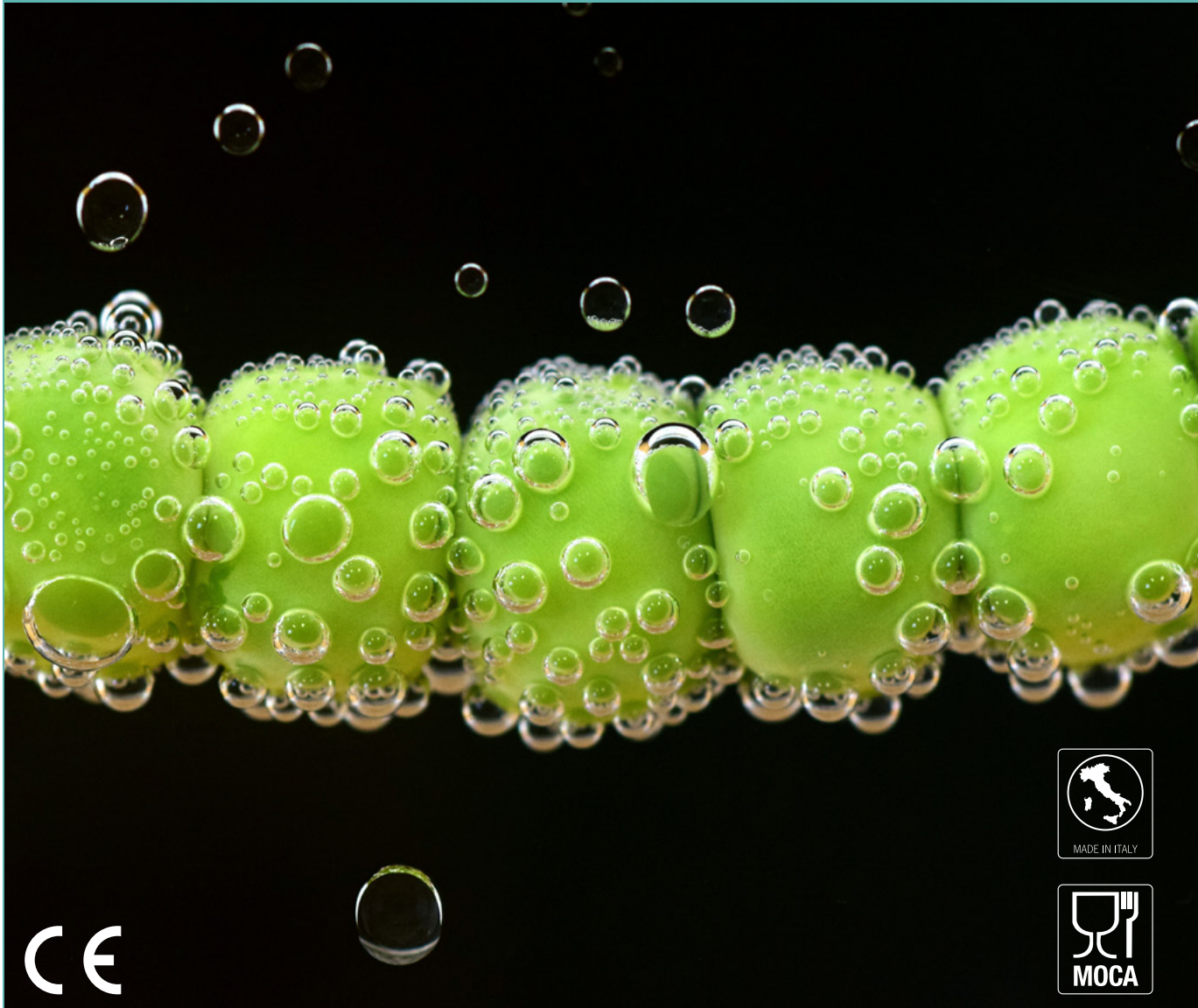
* The capacities may vary according to the French degrees (° f) from the organoleptic properties and the flow rate of the incoming water.

Operating pressure	Min. 2 - Max. 6 bar (0.2 - 0.6 Mpa)
Temperature	Min. 4 - Max. 30°C (40 - 86 °F)



Profine® Pfas

Filtration kit which
removes the Pfas.



microfiltered
water

Profine® PFAS eliminates unwanted odors and flavors, as well as perfluoroalkyl substances (PFAS) PFAS selective resin, final filtration step at 0.5 m with Profine® Carbon Block technology for bacteriostatic action. For use with PFAS concentrations up to 500 ng / L.

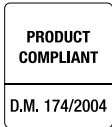
- Eliminates unwanted odors and flavors and reduces chlorine
- Guarantees bacteriostatic action
- Reduces the concentration of PFAS

CODE	DESCRIPTION	FLOW RATE	CAPACITY*
Y21488B-B1S	Kit Pfas Medium Profine®	2 L/min	11.000 L
Y21539B-B2M	Kit Pfas Medium Profine® avec compteur de litres et sans robinet	2 L/min	11.000 L
Y21486B-B1M	Pfas Medium Profine® **	2 L/min	-
Y21497B-B1X	Pfas Large Profine®	2 L/min	11.000 L
PBBPP200-B7Q	BIG 2.0 Pfas Profine®	2 L/min	11.000 L
PBBPP300-B7R	BIG 3.0 Pfas Profine®	3 L/min	16.500 L
PBBPP450-B7S	BIG 4.5 Pfas Profine®	4,5 L/min	24.750 L
PBBPP600-B7T	BIG 6.0 Pfas Profine®	6 L/min	33.000 L

* To be used for waters with Pfas concentrations below 500 ng / l. The exchange capacities may vary depending on the Pfas concentrations of the incoming water and the flow rates.

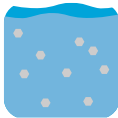
** Can only be used for the 2 piece replacement filter kit.

Operating pressure	Min. 2 - Max. 6 bar (0.2 - 0.6 Mpa)
Temperature	Min. 4 - Max. 30°C (40 - 86 °F)



Profine® Ocra

Total water
hardness reduction.



decarbonated
water

Profine® Ocra is the total softening of water thanks to a special resin. Very popular with hotels, restaurants and cafes. It resolves encrustations due to lime deposits at the root. Profine® Ocra protects and defends plants. Equipped with Profine® Carbon Block, it also eliminates unwanted odors and flavors, reduces chlorine and provides bacteriostatic action.

- Eliminates unwanted odors and flavors
- Reduces chlorine
- It guarantees bacteriostatic action
- Reduces overall hardness
- Protects the systems and machines
- Is effective against limescale

CODE	DESCRIPTION	FLOW RATE	CAPACITY*
Y21415B-AYN	Ocra Small Profine®	1 L/min	Download the Profine® Remove App
Y21414B-AYK	Ocra Medium Profine®	1,5 L/min	
Y21413B-AYG	Ocra Large Profine®	2 L/min	
PBBC0201-B3D	BIG 2.0 Ocra Profine®	3 L/min	
PBBC0301-B3F	BIG 3.0 Ocra Profine®	4,5 L/min	
PBBC0451-B3H	BIG 4.5 Ocra Profine®	6,5 L/min	
PBBC0601-BBA	BIG 6.0 Ocra Profine®	9 L/min	

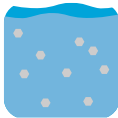
* The capacities may vary according to the French degrees (° f) from the organoleptic properties and the flow rate of the incoming water.

Operating pressure	Min. 2 - Max. 6 bar (0.2 - 0.6 Mpa)
Temperature	Min. 4 - Max. 30°C (40 - 86 °F)



Profine® Violet

Carbonate reduction with pH control and microfiltration.



decarbonated water

Profine® Violet is part of the filtration line dedicated to the removal of temporary hardness. Very popular with hotels, restaurants and cafes. It resolves encrustations due to deposits at the root, also containing the reduction in pH. Profine® Violet protects and defends implants. Equipped with Profine® Carbon Block, it also eliminates unwanted odors and flavors, reduces chlorine and provides bacteriostatic action.

- Eliminates unwanted odors and flavors
- Reduces chlorine
- It guarantees bacteriostatic action
- Contains reduced pH
- Reduces temporary hardness
- Protects the systems and machines
- Is effective against limescale

CODE	DESCRIPTION	FLOW RATE	CAPACITY*
Y21421B-AYW	Violet Small Profine®	1 L/min	Download the Profine® Remove App
Y21420B-AYV	Violet Medium Profine®	1,5 L/min	
Y21419B-AYU	Violet Large Profine®	2 L/min	
PBBVP200-B3R	BIG 2.0 Violet Profine®	2 L/min	
PBBVP300-B3S	BIG 3.0 Violet Profine®	2,5 L/min	
PBBVP450-B3U	BIG 4.5 Violet Profine®	3,5 L/min	
PBBVP600-B3V	BIG 6.0 Violet Profine®	4,5 L/min	

* The capacities may vary depending on French degrees (° f), organoleptic properties and the flow of incoming water.

Operating pressure	Min. 2 - Max. 6 bar (0.2 - 0.6 Mpa)
Temperature	Min. 4 - Max. 30°C (40 - 86 °F)



Profine® Lilac

Carbonate reduction and microfiltration.



Profine® Lilac is the filtration line dedicated to removing temporary hardness. Very popular with hotels, restaurants and cafes. It resolves encrustation due to deposits at the root. Profine® Lilac protects and defends implants. Equipped with the Profine® carbon block, it eliminates unwanted odors and flavors, reduces chlorine and provides bacteriostatic action.

- Eliminates unwanted odors and flavors
- Reduces chlorine
- It guarantees bacteriostatic action
- Reduces temporary hardness
- Protects the systems and machines
- Is effective against limescale

CODE	DESCRIPTION	FLOW RATE	CAPACITY*
Y21477B-B1D	Lilac Small Profine®	1 L/min	Download the Profine® Remove App
Y21478B-B1E	Lilac Medium Profine®	1,5 L/min	
Y21479B-B8P	Lilac Large Profine®	2 L/min	
PBBLP201-B3M	BIG 2.0 Lilac Profine®	2,5 L/min	
PBBLP301-B3N	BIG 3.0 Lilac Profine®	3 L/min	
PBBLP451-B3P	BIG 4.5 Lilac Profine®	4 L/min	
PBBLP601-B3Q	BIG 6.0 Lilac Profine®	5 L/min	

* The capacities may vary depending on French degrees (° f), organoleptic properties and the flow of incoming water.

Operating pressure	Min. 2 - Max. 6 bar (0.2 - 0.6 Mpa)
Temperature	Min. 4 - Max. 30°C (40 - 86 °F)



Profine® ZERO PROFESSIONAL

Reverse osmosis system for low salt water.



osmotic
water

Hyperfiltration incredibly in harmony with nature. Because it is from the natural forces that water moves that this new reverse osmosis system has been designed. Without pump or electricity Zero Professional gives finely osmotic water for 3 liters in 1 minute. Including pretreatment and postprocessing, mounting bracket and conductivity adjustment screw.

- Instant high flow
- Without the need for electricity
- Including pre-treatment and post-treatment activated carbon filters
- Integrated expansion vessel with patented functions
- System layout that creates significant savings in the water used
- Exclusive and compact design
- Integrated support bracket for horizontal and vertical mounting
- Conductivity adjustment screw

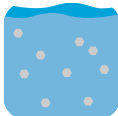
CODE	DESCRIPTION
OF80002000N-ALK	Profine® Zero Professional
Operating pressure	1,5 bar/6 bar 21.7 PSI/87 PSI
Temperature	Min. 4 - Max. 30°C (40 - 86 °F)
Hourly flow rate	24 l/h (4 bar)
Pre-Post filtration	Profine® Carbon Block 5 µm





Profine® Compact

Big results in a small space.



water
softened

Compact and efficient, our softener guarantees brilliant results and reduced costs. Perfectly sized for small businesses, it's the perfect ally to always keep your equipment in order. Also available with the exclusive tw salt: detector control system. Goodbye inlays and halos, welcome shine!

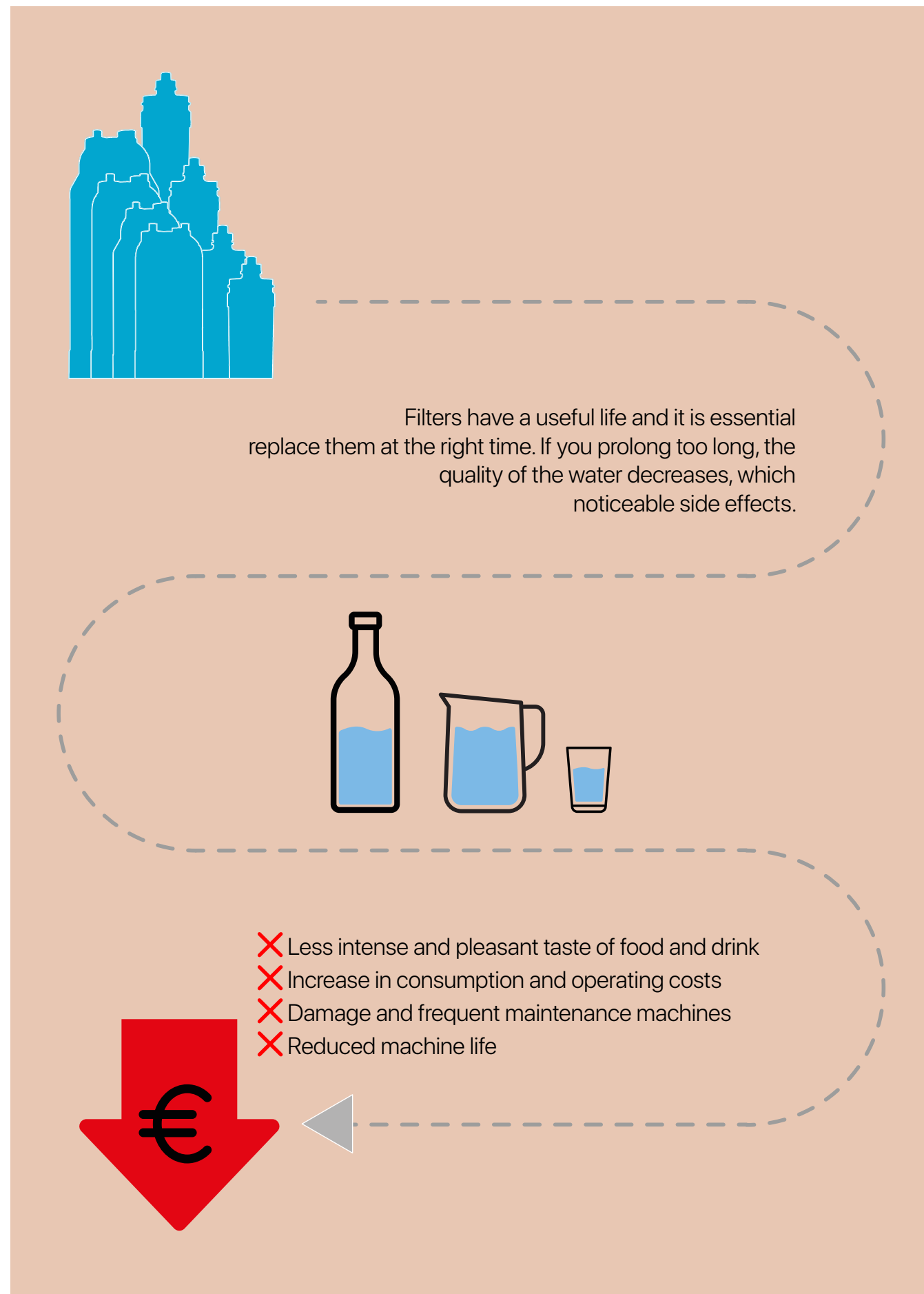
- Compact size
- Large control screen
- Volumetric
- Valve with integrated bypass
- Safety float valve
- Min / max salt level indicator
- Compatible with tw salt: detector
- Key lock function

CODE	DESCRIPTION
8500833	New softener Ccompact 5L
Capacity	30 m³/h
Fittings	3/4"
Flow rate	0,25 mc/h
Resin	5 L
Dimensions	225 x 430 mm h 370 mm



**Beverage water treatment,
the choice of the future.**





tw

Need help choosing the right solution?
Our team can help you achieve the best results by working with you on the most appropriate choices for your business.

Credits
Graphics: tw MKT Department

Keep in touch
facebook.com/profineitalia
instagram.com/profine_italia
[youtube.com/profine cartridge](https://youtube.com/profine_cartridge)
[linkedin.com/profine srl](https://linkedin.com/profine_srl)

#lifewithoutplastic



04

think:water
Profine®

Beverage

Via delle Pezze 35
35013 Cittadella (PD) Italy

tel: + 39 049 9403526
fax: +39 049 8598579

mail: info@thinkwater.com

thinkwater.com
profinefilter.com
shop.profinefilter.com