



BERMAQ®

ACRYLIC POLISHING & CNC MACHINES



General catalogue | **2018**



**Polishing and bending
machines for plastics
and acrylics**



BERMAQ

Experience:

Bermaq, current leader in the sector of machinery for polishing acrylic and PMMA, was founded in 1982 and marked a starting point being the worldwide pioneer in the manufacture of this type of machinery.

Quality and reliability:

This long experience in the market and the aim of continuing our policy of giving priority to the final quality in each of our machine models, it results in the high reliability of our machines, made to last and provide the same productivity for years. Altogether, with the superb finishes offered from day one, make it a safe investment for the customer.



A machine for every situation:

We understand that each client is unique, so our diverse catalogue of polishing and bending machines allow each client find the machine that best suits their needs while meeting the perfect balance between price and performance, from our AMT machine –ideal for small jobs– to the innovative AMI-C, through the full range of bending machines.



Table of contents

- Polishing machines:

BOX pag. 1|1



AMT pag. 1|2



AM2-i pag. 1|3



AMI-C pag. 1|4



PF pag. 1|5



- Bending machines:

DA pag. 2|1



GT1040 pag. 2|3



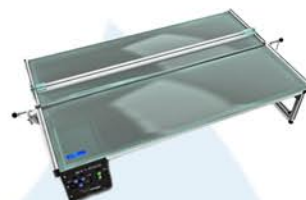
GT2010 pag. 2|5



GT2011 pag. 2|7



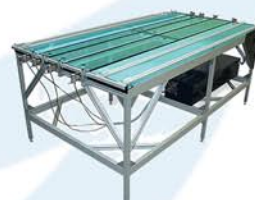
GT1010 pag. 2|2



GT1011 pag. 2|4



GT2040 pag. 2|6



GT2044 pag. 2|8



- Others:

Accessories GTV pag. 3|1



Tools pag. 3|2





BOX

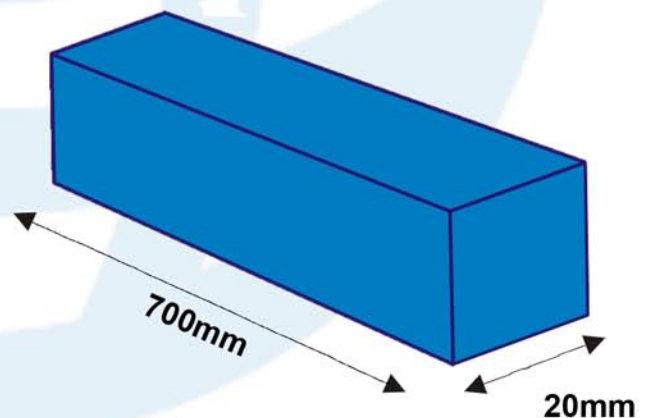
The new portable diamond edge polishing machine



Portable tabletop machine, ideal for polishing acrylic and PMMA workpieces with a high quality finish. Chips suction system is included.

Its two-handed compact design makes it an excellent choice for easy carrying. The BOX machine aims either at the end-user to polish small workpieces or for the final touch of the technician on site.

- EIMQ-131003-LA: Finisher tool (red)
- EIMQ-131001-LA: Pre-cutter tool (black)



	BOX
Working length	700 mm
Maximum thickness	20 mm
Maximum cutting depth	0,5 mm
Milling motor speed	18000 RPM
Feed speed	0 to 1,5 m/min
Weight	15 kg
Power supply	220 V 3PH/380V 3PH+N // 60Hz/50Hz
Outer machine dimensions	420x360x390 mm



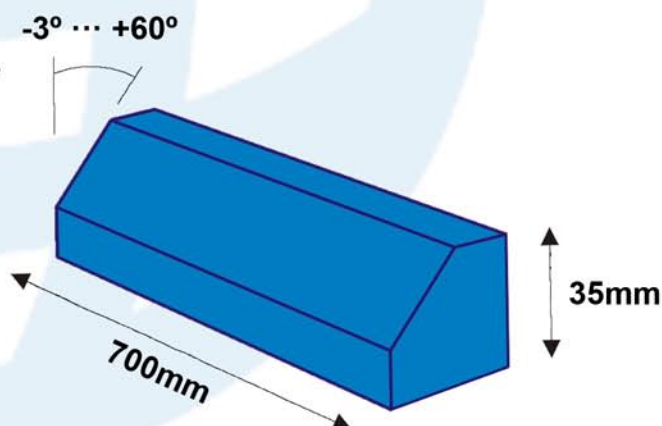
AMT

The ideal machine for a great finish on small jobs



Table-top machine designed for polishing acrylic and methacrylate parts (PMMA) with high quality finishing. On the AMT model, its table can be positioned to obtain bevels or angles up to 60°. It is ideal for the machining of small pieces.

- Automatic feeding
- Workpiece hold-down system: clamps
- Milling angles: 15°, 22,5°, 30°, 45° and 60°
- High precision analogic depth regulator
- Included tools:
 - EIMQ-131003-LA: Finisher tool (red)
 - EIMQ-131001-LA: Precutter tool (black)



	AMT
Working length	700 mm
Maximum thickness	35 mm
Cutting depth	1,4 mm
Milling motor speed	7000 to 12000 RPM
Feed speed	0 to 1,5 m/min
Minimum / maximum inclination	-3° to +60°
Power supply	220 V 1PH // 50Hz/60Hz
Outer machine dimensions	792x539x267 mm



AM2-i

The perfect choice to polish at 90° degrees and angle until 45°



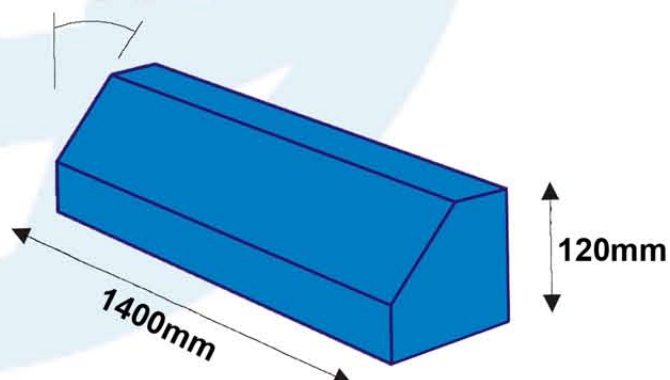
Machine designed for the machining of acrylic and methacrylate pieces from saw-cut edge to high quality crystal clear finish.

This model appeals to the user that requires a flexible and affordable machine without sacrificing its quality.

It is equipped with manually tilting head that enables up to +45°.

- Workpiece fix system: clamps
- Automatic depth regulator
- Manual tilt head inclination up to 45°
- Tools included:
 - EIMQ-131003-LA: Finisher tool (red)
 - EIMQ-131001-LA: Pre-cut tool (black)

-2° ... +45°



	AM2-i
Working Length	1400 mm
Maximum Thickness	120 mm
Cutting Depth	4mm
Milling Motor Speed	12000 RPM
Feed Speed	0,5 a 15 m/min
Number of Clamps	5 units
Power Supply	220 V 3PH/380V 3PH+N // 60Hz/50Hz
Outer Machine Dimensions	2500x1500x1650mm



AMI-C

The new generation of polishing machines starts here



The AMI-C machine represents the next step in innovation of polishing machines. It is the first polishing machine in the market that is fully automated, greatly facilitating its management, increasing productivity and ensuring a perfect finish.

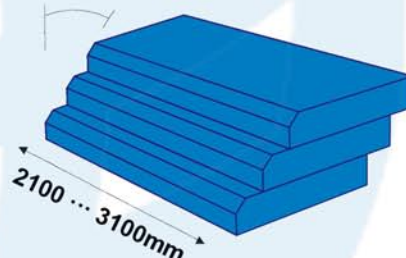
Optionally it can incorporate the tilting screen, increasing its productivity by piling the pieces up.

You can also add the new BERMAQ patented polishing equipment, which allows you to completely finish up the piece with a superb finish touch without the need for subsequent polishing steps on other machines.

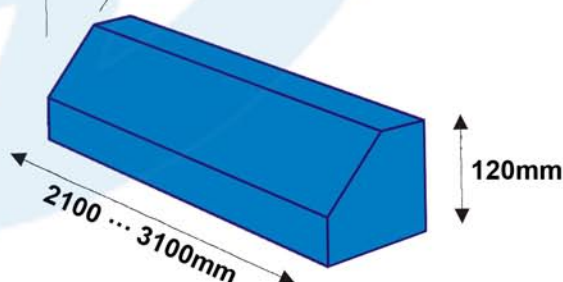
Tools included:

- EIMQ-131003-LA: finishing tool (red)
- EIMQ-131001-LA: cutting tool (black)

0° ... 45°



-3° ... +60°



	AMI-C 2100	AMI-C 3100
Working length	2100 mm	3100 mm
Maximum thickness	120 mm	120 mm
Cutting depth	4mm	4mm
Milling motor speed	6600-12.000 RPM	6600-12.000 RPM
Feed speed	0 a 20 m/min	0 a 20 m/min
Number of clamps	5 units	7 units
Power supply	220 V 3PH/380V 3PH+N // 60Hz/50Hz	
Outer machine dimensions	3250x1992x1647mm	4250x1992x1647mm
Minimum / maximum inclination	-3° ... +60°	-3° ... +60°
Min. / max. screen inclination	0° ... +45°	0 ... +45°



PF

Our solutions for flame polishing



Bermaq has micro-welding machines and flame polishing machines for acrylic pieces. These machines produce a high temperature flame (1200-3300°C) and high precision by reaction of oxygen and hydrogen by electrolysis of distilled water. So it is a safe and clean solution.

	Model 500	Model 800	Model 1200
Gas production	75 lt/h	120 lt/h	240lt/h
Using distilled water (per day)	30ml	50ml	100ml
Maximum temperature	3300°C	3300°C	3300°C
Power	0.50kW	0.80kW	1.20kW
Anti-blowback valve	Sí	Sí	Sí
Nozzles supplied (mm)	20-24	18-24	17-24
Dimensions	400x200x300mm	400x280x380mm	440x320x395mm
Weight	20kg	30kg	50kg



DA

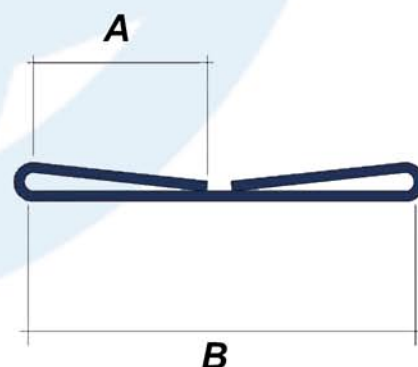
The bending automation



DA machine, is an automatic bending machine for a wide variety of plastic and acrylic sheets with multiple forms and measures, like PETG, PVC, styrene, polystyrene, polycarbonate...

The machine is designed for the realisation of large volumes of work, aims to reduce the production time, and facilitate the completion of the work, keeping the final quality

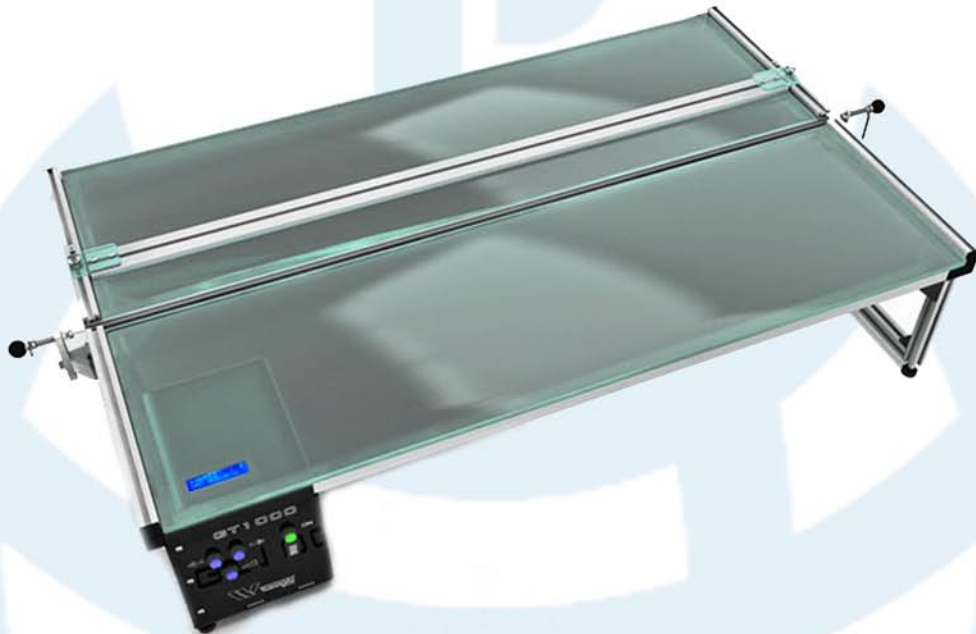
- 2 independent heating resistors, with high precision temperature controls
- Feedrate speed digitally controlled
- Automatic sheets supply (60kg capacity) (Optional)
- Digital counter, with stop function and end of work visual signal (Optional)



	DA
Machine dimensions	2600mm x 1100mm x 1600mm
Feed rate	2m/min to 12m/min
Machine total power	900W
Power supply	220V // 50Hz/60Hz
Material thickness	0,3mm to 0,6mm
Material dimensions to fold:	
- Wing part width (A)	19mm to 350mm
- Centre piece width (B)	51mm to 740mm



GT 1010



	GT 1010
Machine dimensions	1225 mm x 640 mm x 240 mm
LCD Screen	Yes (2 lines)
User parameter library with save and edit function	Yes
Work surface (tempered glass)	1000 mm x 625 mm
Detachable end (rule)	10 to 270 mm
Heating power (1 resistor)	320W
Heating wires regulation	-11 a +14 mm
Power regulation of heating wires	10 a 100%
Max. temp. of heating wires	aprox. 500°C
Programable heating time	10 - 900s
Unlimited heating mode	Yes
Heating process countdown	Yes
Work executed cycles sum	Yes
Acoustic signal at the end of the process	Yes
Heating power setting during the work	Yes
Electrical supply	230 V // 50 Hz // 400 W
Material thickness to bend	0,2 to 1,5 mm



GT 1040



	GT 1040
Machine dimensions	1177 mm x 965 mm x 867 mm
LCD Screen	Yes (4 lines)
User parameter library with save and edit function	Yes
Work surface (tempered glass)	1000 mm x 945 mm
Detachable end (rule)	10 to 270 mm
Heating power (4 resistors)	4 x 320 W
Heating wires regulation	-6 to +5 mm
Power regulation of heating wires	10 to 100%
Max. temp. of heating wires	aprox. 500°C
Programable heating time	0 - 900s
Unlimited heating mode	Yes
Heating process countdown	Yes
Work executed cycles sum	Yes
Acoustic signal at the end of the process	Yes
Heating power setting during the work	Yes
Electrical supply	230 V // 50 Hz // 1600 W
Material thickness to bend	0,2 to 15 mm



GT 1011



GT 1011	
Machine dimensions	1205 mm x 654 mm x 706 mm
LCD Screen	Yes (4 líneas)
User parameter library with save and edit function	Yes
Work surface (tempered glass)	1000 mm x 625 mm
Detachable end (rule)	10 to 270 mm
Heating power (2 resistors)	2 x 320 W
Heating wires regulation	-14 to +10 mm
Power regulation of heating wires	10 to 100%
Max. temp. of heating wires	aprox. 500°C
Programable heating time	10 - 900s
Unlimited heating mode	Yes
Heating process countdown	Yes
Work executed cycles sum	Yes
Acoustic signal at the end of the process	Yes
Heating power setting during the work	Yes
Electrical supply	230 V // 50 Hz // 800 W
Material thickness to bend	0,2 to 15 mm



GT 2010



	GT 2010
Machine dimensions	2230 mm x 625 mm x 885 mm
LCD Screen	Yes (4lines)
User parameter library with save and edit function	Yes
Work surface (tempered glass)	2000 mm x 625 mm
Detachable end (rule)	10 to 270 mm
Heating power (1 resistor)	780 W
Heating wires regulation	-10 to +15 mm
Power regulation of heating wires	10 to 100%
Max. temp. of heating wires	aprox. 500°C
Programable heating time	10 - 1200s
Unlimited heating mode	Yes
Heating process countdown	Yes
Work executed cycles sum	Yes
Acoustic signal at the end of the process	Yes
Heating power setting during the work	Yes
Electrical supply	230 V // 50 Hz // 800 W
Material thickness to bend	0,2 to 15 mm



GT 2040



	GT 2040
Machine dimensions	2230 mm x 1140 mm x 905 mm
LCD Screen	Yes (4 lines)
User parameter library with save and edit function	Yes
Work surface (tempered glass)	2000 mm x 1130 mm
Detachable end (rule)	10 to 270 mm
Heating power (2 resistors)	4x800 W
Heating wires regulation	-15 to +1 mm
Power regulation of heating wires	10 to 100%
Max. temp. of heating wires	aprox. 500°C
Programable heating time	10 - 1200s
Unlimited heating mode	Yes
Heating process countdown	Yes
Work executed cycles sum	Yes
Acoustic signal at the end of the process	Yes
Heating power setting during the work	Yes
Electrical supply	230 V // 50 Hz // 3600 W
Material thickness to bend	0,2 to 15 mm



GT 2011



	GT 2011
Machine dimensions	660 mm x 2.226 mm x 1.085 mm
LCD Screen	Yes (4 lines)
User parameter library with save and edit function	Yes
Work surface (tempered glass)	2000 mm x 620 mm
Detachable end (rule)	10 to 270 mm
Heating power (2 resistors)	2x780 W
Heating wires regulation	-15 to +1 mm
Power regulation of heating wires	10 to 100%
Max. temp. of heating wires	aprox. 500°C
Programable heating time	10 - 900s
Unlimited heating mode	Yes
Heating process countdown	Yes
Work executed cycles sum	Yes
Acoustic signal at the end of the process	Yes
Heating power setting during the work	Yes
Electrical supply	230 V // 50 Hz // 1600 W
Material thickness to bend	0,2 to 15 mm



GT 2044



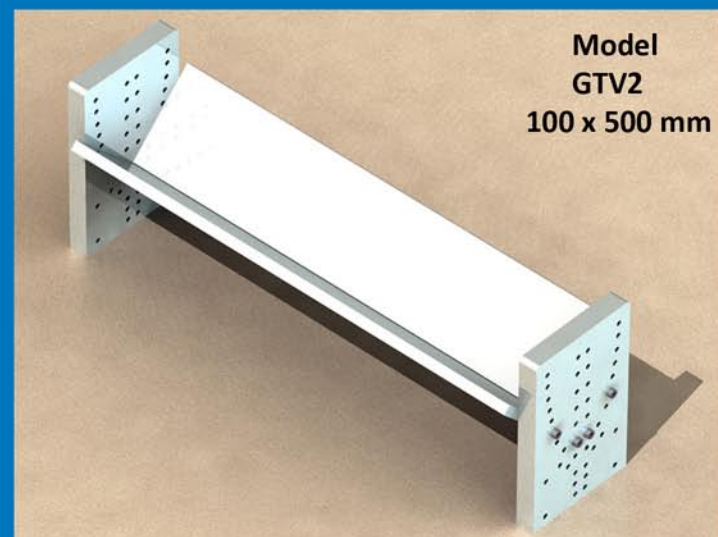
GT 2044	
Machine dimensions	2300 mm x 1140 mm x 1085 mm
LCD Screen	TFT 7"
User parameter library with save and edit function	Yes
Work surface (tempered glass)	2000 mm x 1130 mm
Detachable end (rule)	10 to 270mm
Heating power (2 resistors)	8 x 850 W
Heating wires regulation	-15 to +1 mm
Power regulation of heating wires	10 to 100%
Max. temp. of heating wires	aprox. 500°C
Programable heating time	10 - 1200s
Unlimited heating mode	Yes
Heating process countdown	Yes
Work executed cycles sum	Yes
Acoustic signal at the end of the process	Yes
Heating power setting during the work	Yes
Electrical supply	400 V // 50 Hz // 700 W
Material thickness to bend	0,2 to 15 mm



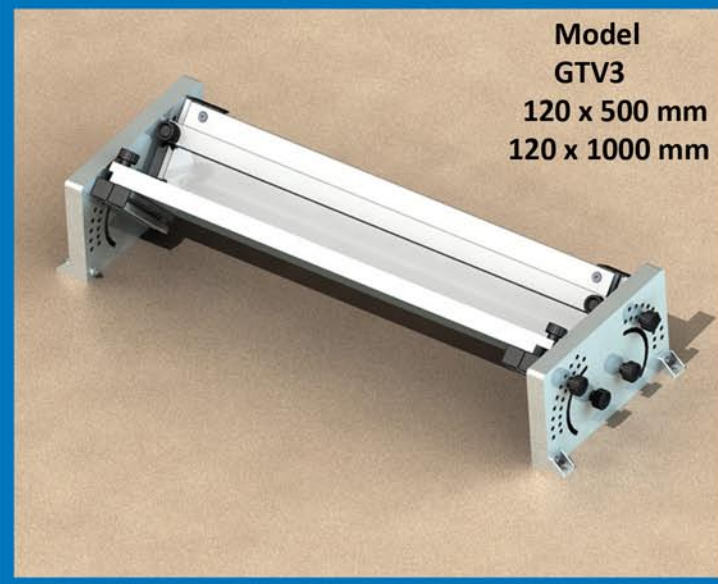
GTV Accessories



Model
GTV1
137 x 500 mm



Model
GTV2
100 x 500 mm



Model
GTV3
120 x 500 mm
120 x 1000 mm

GTV Accessories:

Our accessories for bending machines are perfect for serial production.

Using these elements ensures that all parts have the same shape once cooled.

Its wide range of positions and modularity allow each client to adapt the tool to their needs, allowing them to cover all forms required by the market.



Polishing tools

· Stationary tools plate

- Available with:

- 138mm with 2 fixed tools: **Ref. S-138-2**
- 138mm with 4 fixed tools: **Ref. S-138-4**

· Toolholder plate

- Available with:

- 35mm (Working height) with 2 replaceable tools: **Ref. I-35-2**
- 100mm (Working height) with 4 replaceable tools: **Ref. I-100-4**
- 120mm (Working height) with 4 replaceable tools: **Ref. I-120-4**

· Diamond tools:








For Bermaq, facilitating customers' lives is one of our goals, so we have redesigned and simplified the range of tools. Several tools were previously required to perform the work with different materials, we have reduced to five the number of pencils to perform the same jobs as before, with the same results, allowing significant savings to the user.

All tools are valid to work different materials: PET, WFP, PC, PS, POM, light metals...

The brown tool allows working with different materials: colour PMMA, extruded PMMA, minerals...

The number of cutting tools has been reduced from 4 to 1, thus if you have a plate with 4 holders for pencils, instead of using three cutting tools (1 white, 1 yellow, 1 black) and one for the finish, now it is possible to combine two black tools (cutting) and two finishing tools which yields a result a considerable increase in the production rate.

This table shows –beneath the tool– the colours that were used before and now are replaced by the new tool. For instance, the black tool substitutes the pink, the yellow, the grey and the white ones.

Code:	EIMQ-131001-LA	EIMQ-131002-LA	EIMQ-131003-LA	EIMQ-131004-LA	EIMQ-131023-EU	EIMQ-131001-EU	EIMQ-131024-EU
Replaces:							
Tool function:							
Precutter	✓						
High gloss		✓			✓		✓
Gloss			✓				
Matt / Satin				✓	✓		
Polycarbonate						✓	
Counterweight							✓
Extruded							



BERMAQ®

ACRYLIC POLISHING & CNC MACHINES



WORLDMAQ-3 S.L

Ctra. Molí del Castell S/N
Avià 08610 (Barcelona) SPAIN
Tel. +34 93 823 10 60
bermaq@bermaq.com
GPS N 42° 5' 15" E 1° 49' 45"

www.BERMAQ.com