

# RNS<sup>®</sup>

THE BEST KITCHEN  
EQUIPMENT SYSTEM

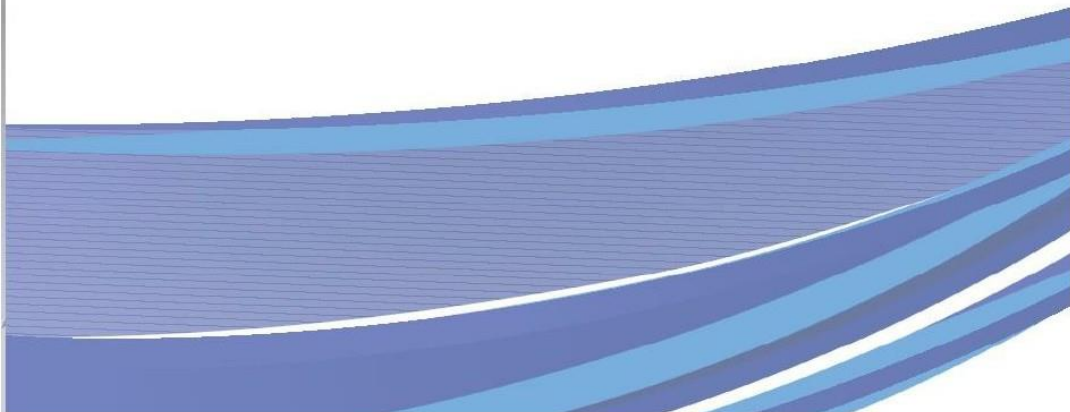
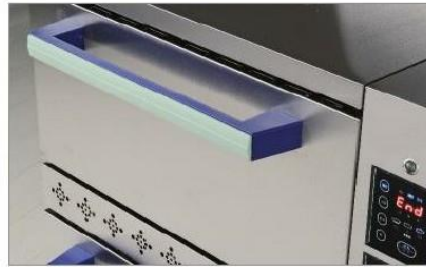




## A leading company focusing on ceaseless research

RNS Co., Ltd is leading the innovative cooking culture as a front-runner in the research & development.

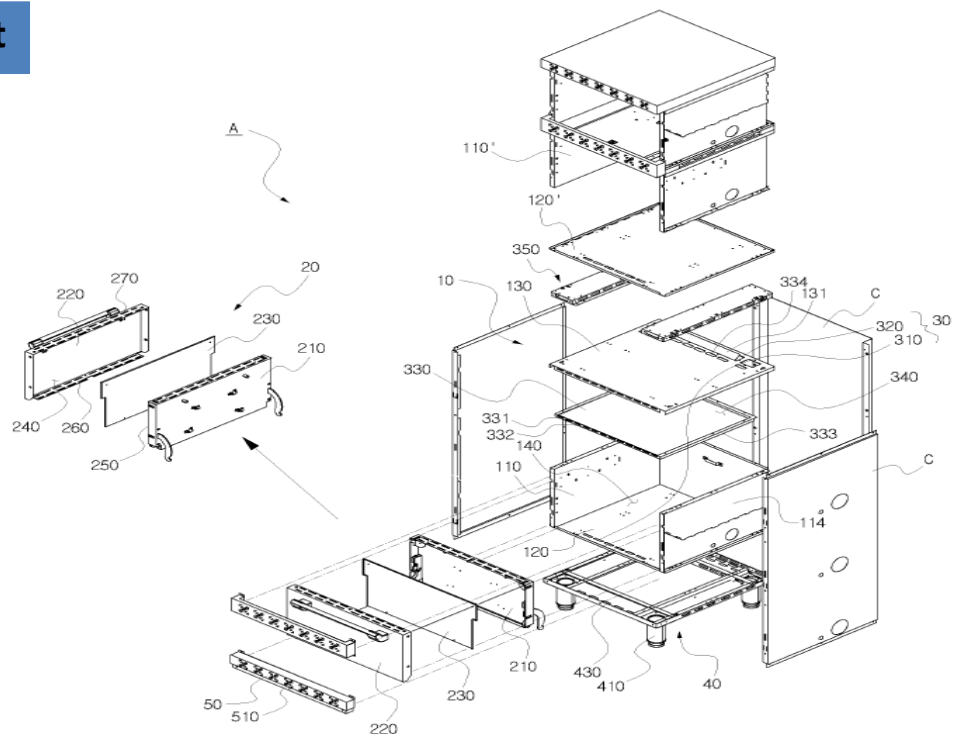
RNS Co., Ltd has a core value that only thinks of the best quality in the industry as well as its own technical pride based on abundant know-how and top-level technology and is constantly striving to develop a new system and a safe cooking environment so that anyone can cook easily and conveniently even though he/she is not a cooking expert.



# Commercial Gas Rice Cooker

Photo					
Model		RRC-151	RRC-101	RRC-150	RRC-100
ID. No		23234418	23234419	23234416	23234417
Net Weight		126kg	110kg	126kg	110kg
Capacity		150 peoples	100 peoples	150 peoples	100 peoples
Power		220V/5--60Hz	220V/5--60Hz	220V/5--60Hz	220V/5--60Hz
		0.05KW	0.05KW	0.05KW	0.05KW
Consumption	LNG	28.95KW	18.6KW	28.95KW	18.6KW
	LPG	28.95KW	18.6KW	28.95KW	18.6KW
Safety Device		Auto Temp. Control, Overheat Protector Fire Safety Device, Power Outage Device			
Reservation		O	O	X	X
Display		Touch. 7-SEG	Touch. 7-SEG	Touch. 7-SEG	Touch. 7-SEG

## Air Flow Chart



## Characteristics

- **Developed New Gas Burner**

Optimized Gas Burner can cook using less heat quantities ( Cook time within 35 minutes )



( Others )



( RNS )

- **Proportional Control Valve**

Due to installed proportional control valve, not ON/OFF Valve, extended Valve Life Time and can control fire easier and possible various cooking. ( Gruel, Steamed Eggs, Crispy Rice Crush )

- **Fourfold Safety Devices.**

- Overheat Protector.
- Fire Protect Device
- Power Outage Safety Device
- Auto Temperature Controller

- **PCB Composition.**

– Installed each PCB on each Rice pot, can replace each PCB in separately when one of rice pot has problem, but the other products must replace main PCB due to other products has only Main PCB.

- **Display Lamp for Cooking processing.**

– Chef can check cooking procedure by cooking processing lamp.

- **Installed Ball Transfer.**

- Move Rice Pot easier.

- **Possible Stainless Steel Pot and Aluminum Pot.**

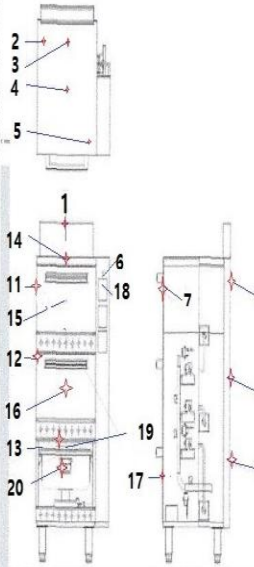


# Testing Data-1 ( Performance Tested by Korea Testing & Research Institute on March 7<sup>th</sup>, 2018. )

## \* Position of Thermocouple

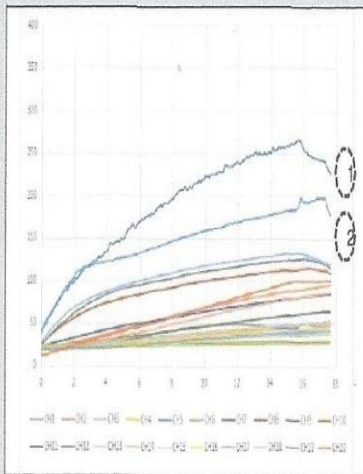
CH1	CH2	CH3	CH4	CH5	CH6	CH7	CH8	CH9	CH10
Center of Exhaust	Left Top Rear	Center Top Center	Top Center	Top Right	Controller Top Center	Door Case Center	Hood Case Top	Hood Case Center	Hood Case Bottom
CH11	CH12	CH13	CH14	CH15	CH16	CH17	CH18	CH19	CH20
L Case Top	L Case Center	L Case Bottom	Front of Decoration Top	Upper Door Center	Middle Door Center	Bottom Door Center	Upper Control Center	Top Cabinet Temp.	Water Temp.

Top Panel	Door & Deco	Hood	Case (L)	Case (R) Controll	Exhaust	Inside	Pot Inside Water
CH2, CH3, CH4, CH5	CH14, CH15, CH16, CH17	CH8, CH9, CH10	CH11, CH12, CH13	CH8, CH18	CH1	CH7, CH19	CH20

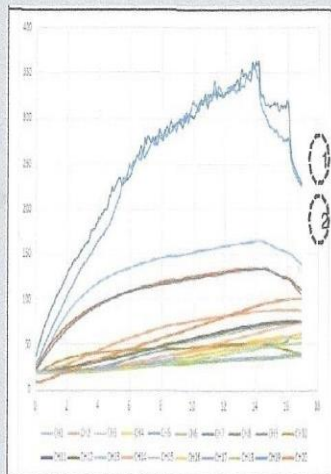


\* Compare Testing Performance  
Graph 1 and 2

\* Due to Cabinet Temperature is lower than other products, it protect rust by high temperature and increasing Life Time!



RNS Cooker

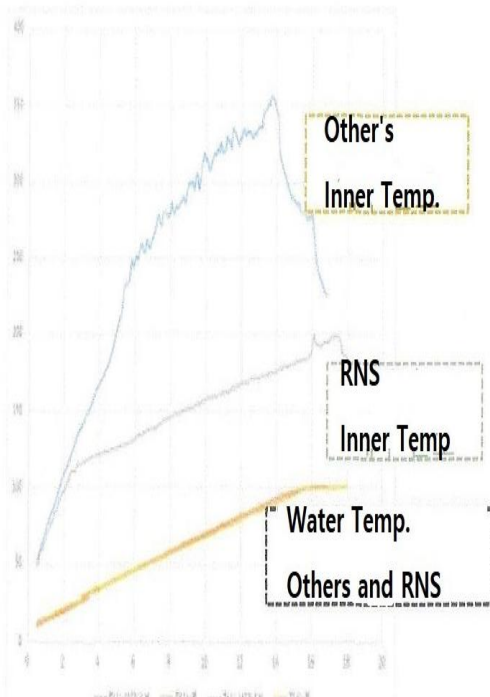


Others

1 CH7 : door in case Center

2 CH19 : Cabinet Temp. inside on the Top

## Testing Data-2 ( Performance Tested by Korea Testing & Research Institute on March 7<sup>th</sup>, 2018. )



Comparison of Inner Temp and Water Temp

### Gas Consumption

Com-pany	Input Water (L)	Output Water (L)	Gas Consumption (L)	Lead Time		Difference Consumption (L)	Saving Rate (%)
				Cook	Steam		
Other	176,401.50	176,726.40	324.90	23Min 30Sec	15M	—	—
RNS	175,304.90	175,601.55	296.65	25Min 25Sec	15M	28.20 ↓	8.70 ↓

- Save Gas Cost by developed Optimized Burner : Save 8.7% than other products

### ● Performance

1. Installed each PCB
2. Propotional Control Valve - Control Fire
3. Protect Burn Injury by Installed Insulation panel each pot





Battery-type soup pot (No power supply required)



**RSK-500SSF**

Size	1610×1200×950
Gas consumption	48.84kw / 42,002kcal
Structure	Triple inner layer, outer layer made of stainless steel
Function	Automatic ignition

**RSK-300SSF**

Size	1530×1100×950
Gas consumption	48.84kw / 42,002kcal
Structure	Triple inner layer, outer layer made of stainless steel
Function	Automatic ignition

Battery-type soup pot (No power supply required)



**RSK-500BF**

Size	1610×1200×950
Gas consumption	48.84kw / 42,002kcal
Structure	cast-iron inner layer, and enameled outer layer
Function	Automatic ignition

**RSK-300BF**

Size	1530×1100×950
Gas consumption	48.84kw / 42,002kcal
Structure	cast-iron inner layer, and enameled outer layer
Function	Automatic ignition

**RSK-200BF**

Size	1415×1000×950
Gas consumption	44.20kw / 38,012kcal
Structure	cast-iron inner layer, and enameled outer layer
Function	Automatic ignition

## Soup/Stir/Fried Pot-Fire Prevention Type



### Safe fried food pot (Fire prevention)



#### RSK-501SSF

**Size** 1610×1200×950

**Gas consumption** 48,84kw / 42,002kcal

**Structure** Triple inner layer and  
outer layer made of stainless steel

**Function** Fire safety device, anti-overheating  
safety device, timer function, and automatic  
temperature control safety device

#### RSK-301SSF

**Size** 1530×1100×950

**Gas consumption** 48,84kw / 42,002kcal

**Structure** Triple inner layer and  
outer layer made of stainless steel

**Function** Fire safety device, anti-overheating  
safety device, timer function, and automatic  
temperature control safety device

### Safe fried food pot (Fire prevention)



#### RSK-501BF

**Size** 1610×1200×950

**Gas consumption** 48,84kw / 42,002kcal

**Structure** cast-iron inner layer,  
and enameled outer layer

**Function** Fire safety device, anti-overheating  
safety device, timer function, and automatic  
temperature control safety device

#### RSK-301BF

**Size** 1530×1100×950

**Gas consumption** 48,84kw / 42,002kcal

**Structure** cast-iron inner layer,  
and enameled outer layer

**Function** Fire safety device, anti-overheating  
safety device, timer function, and automatic  
temperature control safety device

#### RSK-201BF

**Size** 1420×1000×950

**Gas consumption** 44,20kw / 38,012kcal

**Structure** cast-iron inner layer,  
and enameled outer layer

**Function** Fire safety device, anti-overheating  
safety device, timer function



## Soup/Stir/Fried Pot-Air Supply ( Blast ) Type



### Supplied-air soup pot (Energy-saving type)



#### RSK-502SSF

**Size** 1570×1200×950

**Gas consumption** 39,00kw / 33,540kcal

**Structure** Triple inner layer and outer layer  
made of stainless steel(Triple structure)

**Function** Fire safety device, anti-overheating  
safety device, timer function, and automatic  
temperature control safety device

#### RSK-302SSF

**Size** 1490×1100×950

**Gas consumption** 37,00kw / 31,820kcal

**Structure** Triple inner layer and outer layer  
made of stainless steel(Triple structure)

**Function** Fire safety device, anti-overheating  
safety device, timer function, and automatic  
temperature control safety device

#### Function

1. It is available to cook all of **soup, fried food, and stir-fried food**
2. Out patented **triple outer layer structure** keeps the kitchen comfortable by preventing the soup pot from overheating.
3. It takes up less space in your kitchen due to the structure of **heat exhaust at the upper part**.
4. **Gas cost** can be reduced with a **premixing gas burner method**.

**20%**

**It can save  
20% of gas cost**

### Gas stove



#### RTR-1503GA

**Size** 1500×750×850

**Gas consumption** 59kw / 50,740kcal

**Performance** · Automatic ignition

- Cleaning plate equipped
- Gas burner with the high amount of heat applied
- Adjusting the various amounts of heat with only one burner available

### Griddle



#### RGR-1503GA

**Size** 1500×750×850

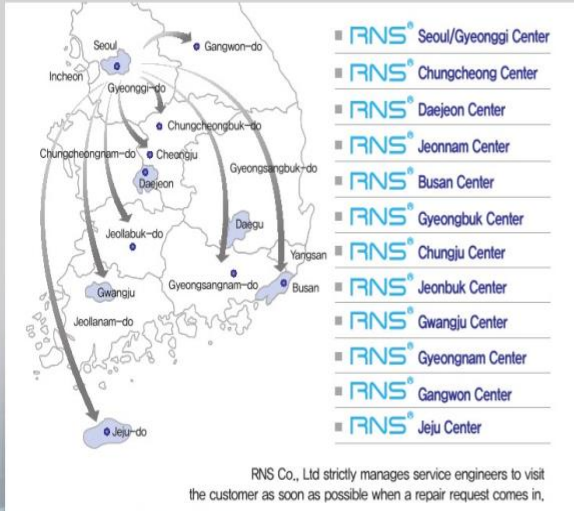
**Gas consumption** 14,6kw / 12,556kcal

**Performance** · Automatic ignition

- Cleaning plate equipped
- "U"-shaped burner with a good heat efficiency used
- An ignition confirmation window attached
- Can be partially used with the application of three burners

## Service & Distributors

Contact number for customer service centers : 1644-3648



**RNS®**  
(주)알엔에스

16, Nokchon-ro 106beon-gil, Hwado-eup, Namyangju-si,  
Gyeonggi-do, Republic of Korea  
Representative number : 031-595-9901 Fax : 031-595-9902

