



Contents

01	TESTONE
02	PRODUCT
03	MARKET
04	OVERSEAS



01 TESTONE

Greeting
History
Certification

⌚ The best companies
⌚ The best talent

TESTONE is specialized in test equipment manufacturing such as U.T.M, Environment Chamber and etc., with the best technical ability & constant technical developing efforts and has supply records mainly to universities in Korea and big Korean companies such as **Samsung, LG , LS , Hyundai , TUV Korea , etc.,**

Since we starting, **TESTONE** was able to grow rapidly with high technology and stable quality. Also **TESTONE** provide our partner with the total solution include Order Production, Programming and After Sales Support. Therefore we have known as a company with high customer satisfaction through fast response.

Greetings



We are trustful company, thoroughly abide by our promise even though a trivial promise.
Thanks for interesting TESTONE CO.,LTD.

As this company manufacture the test machine, we recompense customers for our efforts.
We catch up with today's competitive business world and keep up technical development and quality control .

Nowadays, domestic test manufactures have been developing day by day however, the government-affiliated research institute, university, a business entity and etc. use exotic tester equipment so there have been some distrust and prejudice about domestic tester. As more than 20 year career of professional technicians show, we have know-how and skills therefore we change exotic equipment to domestic equipment and make new products. With the professional knowledge, information, the specialized material-property tester and the reliability tester, we offer customers to better service with the professional knowledge, information, the specialized material-property tester and the reliability tester.

Now and forever, we using exertion of challenge and passion to research and develop also we do our best to make our customers happy.

Finally as honest business administration, we thoroughly abide by our promise even though a small promise.

Our company's credo is "the customer is first" so we will do the best we can.

Please, keep up the encouragement and guidance to Testone co. LTD

Hoping the future will bring you the fulfillment of your work.

Thank you.

C.S.O

Song, Sung Hwan

History

TESTONE

2017 INNOBIZ COMPANY 

Prospective Design Driven Company

-The Ministry of Trade Industry and Energy & The Korea Institute of Design Promotion



2016 High-Growth Company 

The Best Valued Award, Gyeonggi-Do



2015 **Expansion Head Office and Factory**
-Sihwa National Industrial Complex, Double scales

2013 **ISO 9001 Certification** 

Verification of Direct Production Verification

-Procurement Authority Certification

2012 **CE Certification** 

2011 **Conversion to a Corporation 'TESTONE'**
Samsung Group Companies Suppliers Registered/
LG Group Partner Registration/Hanwha Group Partner Registration

1987 **Establish of Hwa-Sung INC**

1987~2008 **Construction, Civil Engineering, Cement-Related
Environmental Chamber and Tester Manufacturing and
Sales**

2009 **Change Company Name Hwa-Sung INC -> TESTONE**

Certifications



CE



ISO9001



Korea Industry Technology Association



Korea Technology Finance Corporation



Distributive research for calibration



Trade frontier certificate



Industry university project



Distributive research with university



Distributive research with university

02 PRODUCT

Field of Business
U.T.M
Software
Feature



Universal Testing Machine
TO-101



Product-Field of Business

Automotive Test

- * Electronic car tester
- * O/S,I/D Car handle tester
- * Luggage board tester
- * In-line Heating Press
- * Motorcycle durability tester
- * Clutch pack tester
- * Globe box durability tester
- * Damper durability tester
- * CFRP auto press
- * Solar simulation chamber



Fatigue/Durability Test

- * Fatigue/durability tester
- * Valve torque fatigue tester
- * Valve leak tester
- * Antenna tester
- * Bolt torque tester
- * Buffing/Heater tester
- * Sealant environmental tester
- * Gasket environmental tester



Material Test

- * Universal testing machine
- * Rubber, Film, Plastic
- * Fiber, leather
- * paint, exfoliate, Coating
- * Environmental chamber
- * Ozone chamber
- * Heating press



Product-Main Items

Universal Testing Machine_TO-101/TO-102



Universal Testing Machine TO-101/TO-102

 **TEST ONE** | www.testone.co.kr



Product-Main Items



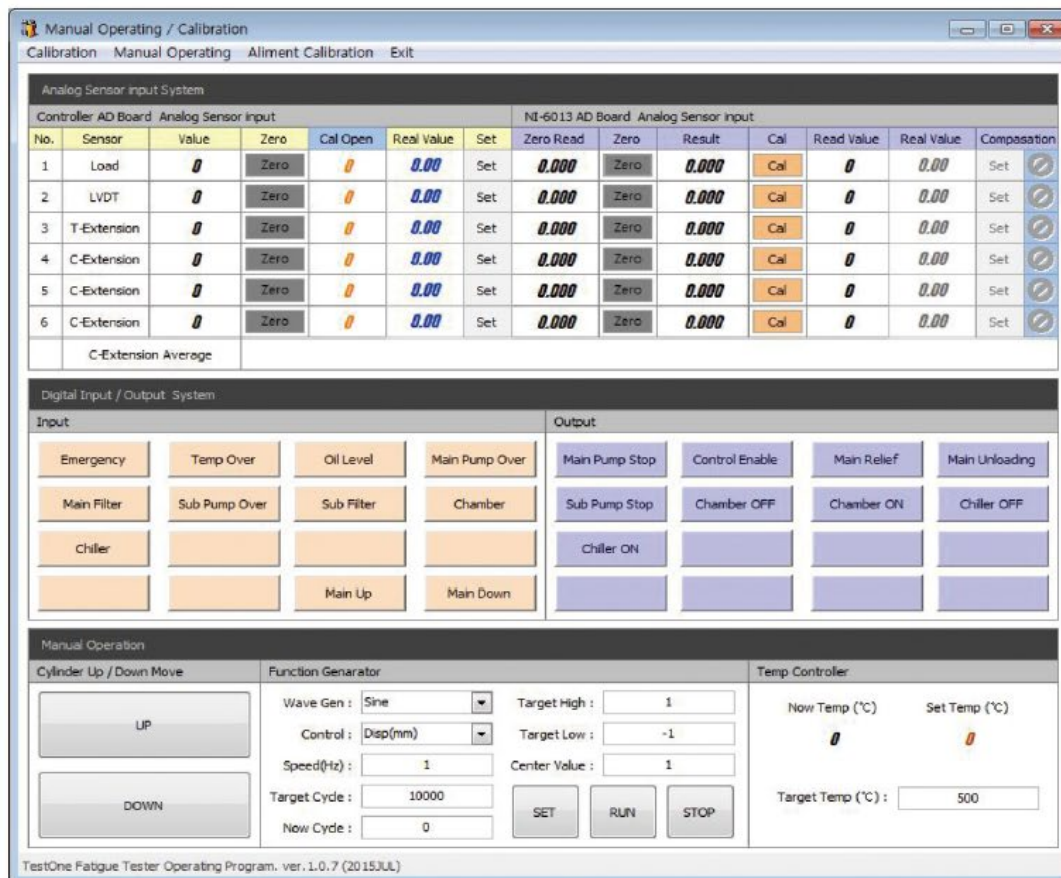
TO-101/102 Feature

- **All TESTONE series load frames** are designed to provide higher stiffness and precise alignment for testing everything from medical devices to high-strength composites. rigid mechanical design ensures the best possible conditions for repeatable test condition and reliable results.
- **Superior stiffness**
The stiff load-frame profile and generous connecting surface of the test machines reduce the inclination angle of the crosshead under load, enabling very precise alignment and application of force to the specimen. this is advantageous for flexure tests, compression tests, precision test on components etc.
- **Easy accessibility**
Easier access to the test area is a very important benefit for the operator. when testing large metal specimens, fasteners, or composite parts, operators often struggle to reach the test area of large frames in order to load a specimen. Testone frames are designed with a lower base height that allow the operator to stand closer to the grips and fixtures, reducing the need to hold heavy test specimens away from the body.
- **Built for diversity**
With an environmental chamber, materials tests in constant temperature and humidity, low or high temperature are possible.
- **Variety of grips**
Systems can be equipped with a variety of grips, fixtures, environmental chambers and temperature controlled baths to accommodate a wide range of testing requirements. For more accurate strain measurements, extensometers or accessory can be added to any TESTONE testing System.
- Digital Display of force, displacement, cell capacity, speed, position, mode, unit etc.
- High-speed, low vibration & noise, japanese made AC servo motor and
- Real time graphic display with multiple axis selection, auto scaling etc.
- Manual control of crosshead with all functions.
- Fully digital testing system with high precision control and accuracy, includes automated computer control of test methods.
- Crosshead guidance system providing precise alignment and smooth running.
- All testing systems include choice of load cell
- Self-diagnostics expedite troubleshooting and minimize downtime.

Product-Software

UTM Software

TO-100S



03 Market

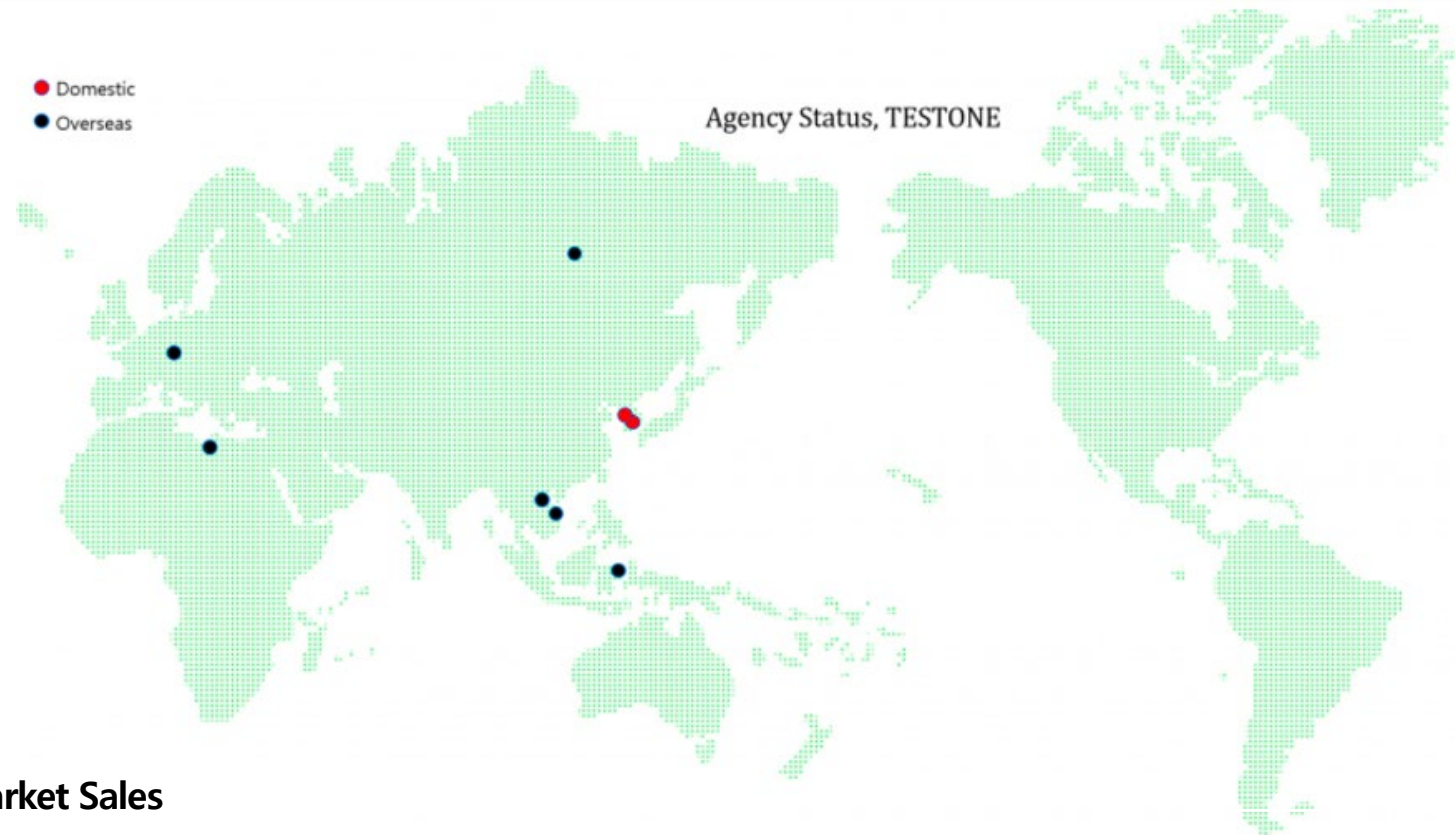
Market Sales

- Domestic
- Overseas

Agency
Customer
Gallery



Reference List



❖ Market Sales

SUBDIVIDE		South Korea Market Scale						(Unit)
		2012	2013	2014	2015	2016	TOTAL	
Korean Market	U.T.M	42	72	92	112	108	426	
	Electronic Testing Machine	23	20	25	19	32	119	
	Fatigue & Durability Test	8	15	23	28	27	101	
	TOTAL	73	107	140	159	167	646	
World Market	U.T.M	1	3	7	6	12	29	
	Electronic Testing Machine	-	-	3	16	25	44	
	Fatigue & Durability Test	-	-	-	1	1	2	
	TOTAL	1	3	10	23	38	75	

Agency

DOMESTIC

Gyeongbuk (Shin Young Instech)

[View Map](#)

📍 Address	401, 350-27, Gumi-daero, Gumi-si, Gyeongsangbuk-do
☎ Phone Number	82-54-476-8825
📠 Fax Numver	82-54-476-8826
🏠 Homepage	http://www.syinstech.com/
🏢 Major industries	Instruments, Analyzers, Reliability Equipment, Laboratory Equipment, Correction, Inspection Equipment Development

Gyeongnam (Balmann Instrument)

[View Map](#)

📍 Address	53, Hamwol 12-gil, Jung-gu, Ulsan
☎ Phone Number	052-257-9430
📠 Fax Numver	052-257-9470
🏠 Homepage	http://www.balmann.com/
🏢 Major industries	Instrument, Machine tool, Tester production

Toan Thang Trading and Technology Co.,Ltd

[View Map](#)

📍 Address	Vietnam
☎ Phone Number	+84 462 971 666
📠 Fax Numver	
🏠 Homepage	http://www.toanthangtech.com
🏢 Major industries	

HUST Viet Nam Technical Equipment Co., Ltd

[View Map](#)

📍 Address	Vietnam
☎ Phone Number	+84 433 504 031
📠 Fax Numver	
🏠 Homepage	http://www.hust.com.vn
🏢 Major industries	

OVERSEAS

AROTEK SCIENTIFIC INSTRUMENTS PVT. Ltd

[View Map](#)

📍 Address	Indonesia
☎ Phone Number	
📠 Fax Numver	
🏠 Homepage	
🏢 Major industries	

ProControl AMC

[View Map](#)

📍 Address	Romania
☎ Phone Number	0040 21 208 96 79
📠 Fax Numver	
🏠 Homepage	
🏢 Major industries	

DAG Technologies (M'sia) Sdn Bhd

[View Map](#)

📍 Address	Malaysia
☎ Phone Number	+603 8994 9590
📠 Fax Numver	
🏠 Homepage	http://www.dagtech.com.my
🏢 Major industries	

ООО NPO LATEMI

[View Map](#)

📍 Address	127254, Ogorodny prosed 5, Moscow, Russia
☎ Phone Number	+7(800) 775-93-83
📠 Fax Numver	+7(495) 787-43-61
🏠 Homepage	http://latemi.ru/
🏢 Major industries	

Customer

❖ Company



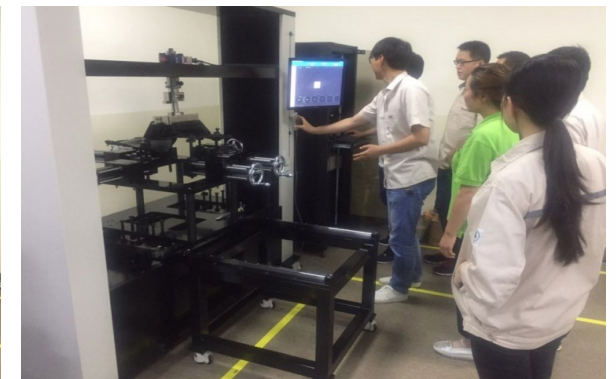
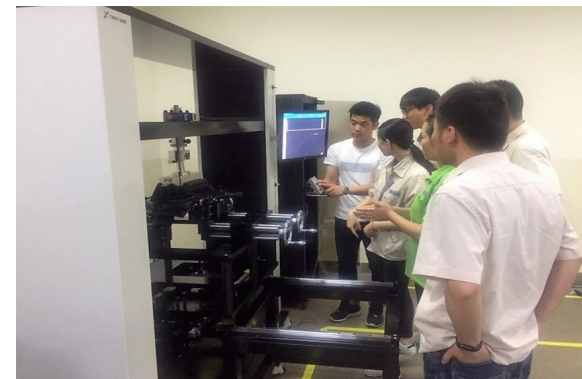
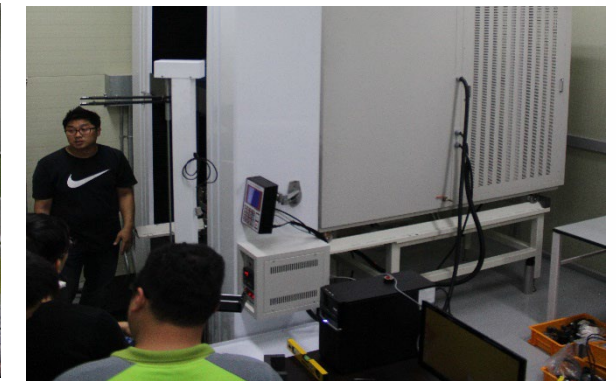
❖ University



❖ Government Laboratory



Gallery



04 Overseas

Plan

-Support

Policy

-A/S Service

After Sales Service

Plan



Overseas Plan

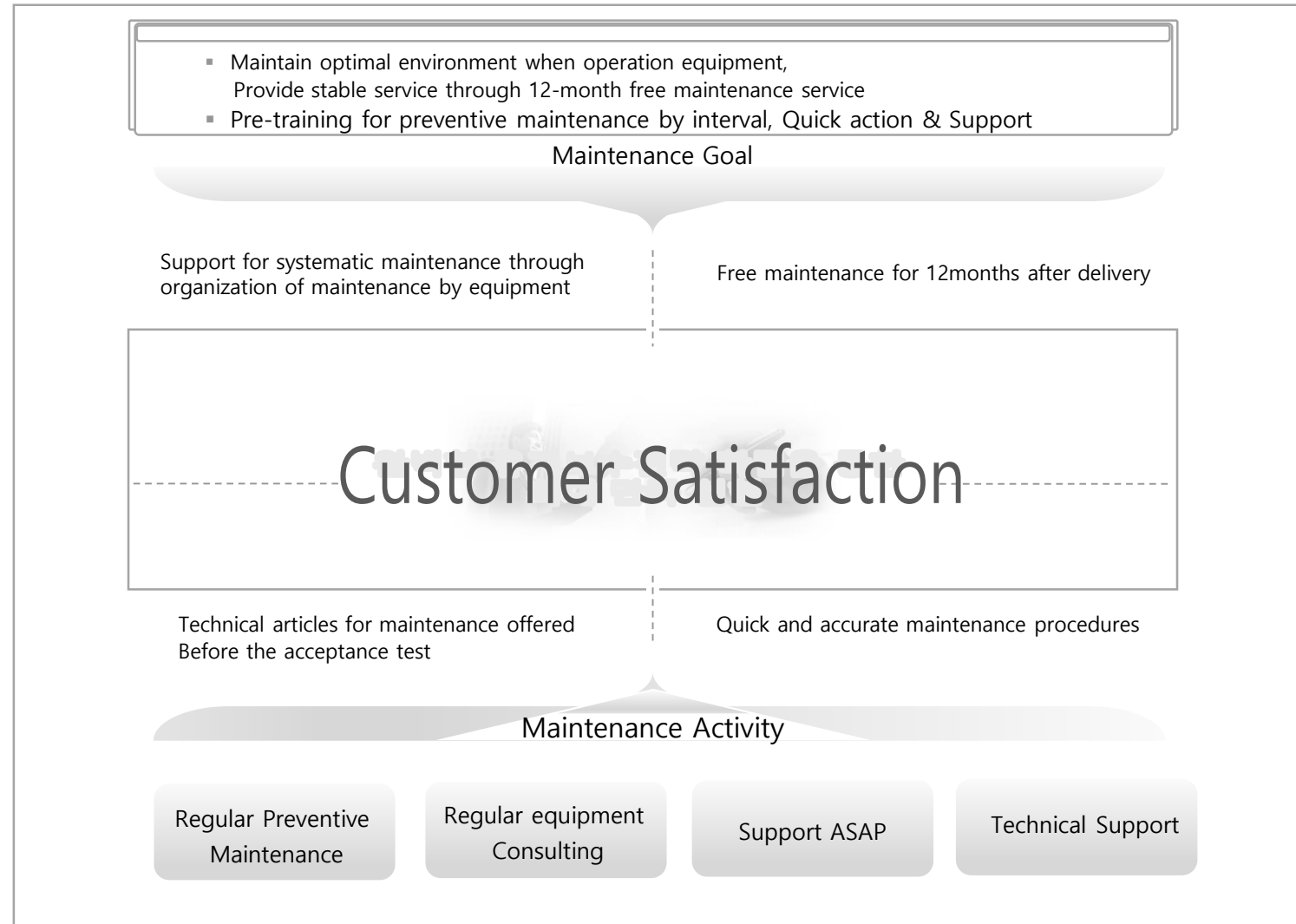
TESTONE, Partnership Proposal

- > Establishing Southeast Asian Integration Infrastructure
 - ❖ Securing regional competitiveness through Technology and Investment support : Distributor-> LSC
 - ❖ Performing a leading role in overseas related industries through Certification and expansion of technical support
 - ❖ Promoting the development of related industries by securing global competitiveness



Overseas Policy

❖ Maintenance



Overseas Policy

❖ Maintenance Procedures

Procedures		Performance
<pre> graph TD 1([1 Establish a maintenance plan]) --> 2([2 Preventive Maintenance]) 2 --> 3([3 Maintenance Training]) 3 --> 4([4 Disability Reception]) 4 --> 5{5 Self Action} 5 --> MST[Maintenance Support Team] MST --> 6([6 Results Notification]) 6 --> C[Customer] MST --> R[R E C O R D] R --> 6 </pre> <p>The flowchart illustrates the maintenance process. It begins with '1 Establish a maintenance plan', followed by '2 Preventive Maintenance', '3 Maintenance Training', and '4 Disability Reception'. Step 5, 'Self Action', is a decision point that leads to the 'Maintenance Support Team' (MST) or a 'RECORD' box. The MST includes 'Receipt', 'Review', and 'Process' steps. The 'RECORD' box is a vertical box with the word 'RECORD' written vertically. Both the MST and the 'RECORD' box lead to '6 Results Notification', which then leads to the 'Customer'.</p>	<ul style="list-style-type: none"> Establish a disability / Preventive Maintenance plan 	
	<ul style="list-style-type: none"> Obstacle check by preventive maintenance plan 	<ul style="list-style-type: none"> Preventive maintenance <ul style="list-style-type: none"> Monthly regular visit of phone check
	<ul style="list-style-type: none"> Simple maintenance progress 	<ul style="list-style-type: none"> Training manual for maintenance manual and simple error
	<ul style="list-style-type: none"> Visit Telephone & e-mail 	<ul style="list-style-type: none"> Disability Reception <ul style="list-style-type: none"> Reception by telephone /e-mail/ visit etc
	<ul style="list-style-type: none"> Maintenance support by fault handling policy 	<ul style="list-style-type: none"> Supporting specialized personnel by equipment <ul style="list-style-type: none"> Receipt /Review/Process
	<ul style="list-style-type: none"> Report progress and results 	<ul style="list-style-type: none"> Maintenance record and history management notification

Service System

We are reliable & hard-working company



Service

The condition of the machine is recorded at the service and necessary repairs are carried out and wear parts replaced immediately, where possible. The service engineer will also advise on preventive and/or precautionary measures. Preventative maintenance, calibration, emergency repair, system refurbishment service, training, and parts.



Training

Training carried out by our service technicians during the acceptance test also Training in our company before the machine has been put into operation. On site retraining or at our application laboratory.



Calibration

The reference measuring equipment used is regularly recalibrated depending on the customer's requirements. Our calibration laboratory offers a comprehensive range of accredited calibration and verification services complying with ASTM and ISO standard for: Force, Speed, Displacement, Impact, Temperature, Torque and Alignment



Thank you.

Q & A