

**PACKED WITH  
SMARTNESS**

**STAGE**



**25/30D/35DN-9V**

**500 mm load centre**



**ECONOMIC ENGINE**  
(-13% FUEL  
CONSUMPTION)



**INTEGRATED  
HYUNDAI  
POWERTRAIN**



**ELECTRONIC  
CONTROLLED  
TRANSMISSION**



**FULL  
CONTROL  
CLUSTER**



**BEST  
STANDARD  
WARRANTY**

# ***STAGE V AND BEYOND***

Hyundai's new 9V Series is a smart generation of material handling diesel forklifts that comply with the European Stage V emission levels. But it goes much further than that!

In our mission, 'Moving you Further', Hyundai's engineers aimed for a **groundbreaking level of customer satisfaction** with **maximum performance** and **productivity**, higher **operator comfort**, better **safety** and **improved uptime management**.

Our new 9V forklifts feature a robust exterior design and are packed with performance-enhancing features that open up a world of new possibilities to tackle all the challenges you face in your logistics business.



# ***PACKED WITH SMARTNESS***

Productivity & Efficiency

POWERFUL AND FUEL-EFFICIENT TO REDUCE TCO (TOTAL COST OF OWNERSHIP)

The Hyundai engineers have left no stone unturned in their efforts to save you costs and improve your productivity. The Hyundai legacy of reliable technology continues with an optimised engine and powertrain, developed completely in-house in order to deliver unprecedented efficiency and boost your profits.

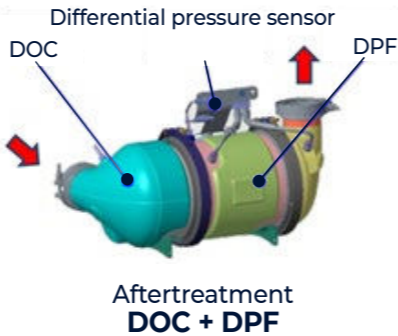
Unparalleled fuel efficiency NEW



The 9V series is equipped with a powerful 2.2L HMC D4HB diesel engine that produces 47.7 KW while complying with European Stage V environmental regulations. It also achieves **impressive cost savings** by delivering excellent performance with low fuel consumption rates.



- Featuring the optimal displacement for a forklift, the HMC D4HB engine comprises a timing chain, an electronic EGR valve, a common rail, turbocharger with an excellent boosting effect and an exhaust gas after-treatment (DOC + DPF) device.
- A power mode selection switch is mounted on the dashboard. The operator can choose between lower power and lower fuel consumption or more power, depending on the application.
- The DPF regeneration works automatically.
- A parked regeneration can be activated manually at any time.
- The operator can use a switch to prevent the regeneration process (hot exhaust gases) for working in an area with a potential risk of fire.



Fuel efficiency  
13%

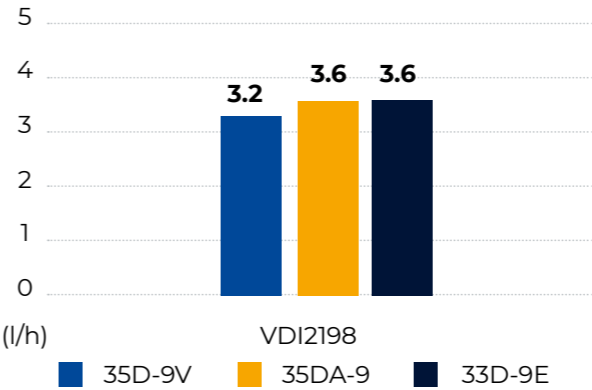


New hydraulic system NEW

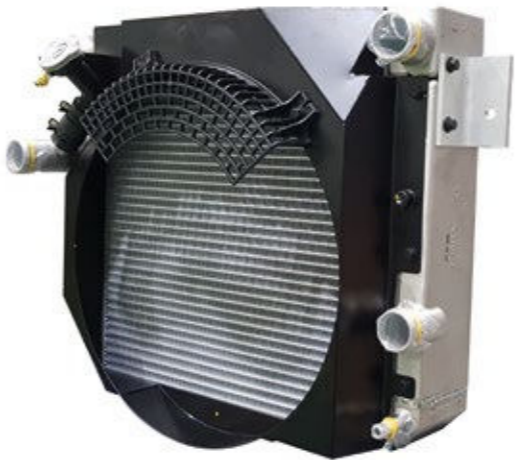
The new engine is combined with a new hydraulic pump and main control valve (MCV). The result is increased controllability, productivity and fuel efficiency.

Fuel consumption

Compared to our previous models -9 & -9E.



Based on VDI2198				
ENGINE	Manufacturer	MHC	KUBOTA	YANMAR
	Model	D4HB	V3307	4TNE92
	Emission Regulation	Stage 5	Stage 4	Stage 3
	Rated Power (ps/rpm)	65/2,300	67/2,200	45.5/2,450
	MAX Torque (kg-m/rpm)	24.1/1,500	23.1/1,500	14.4/1,600
	Displacement (cc)	2,199	3,331	2,659



Improved cooling system NEW

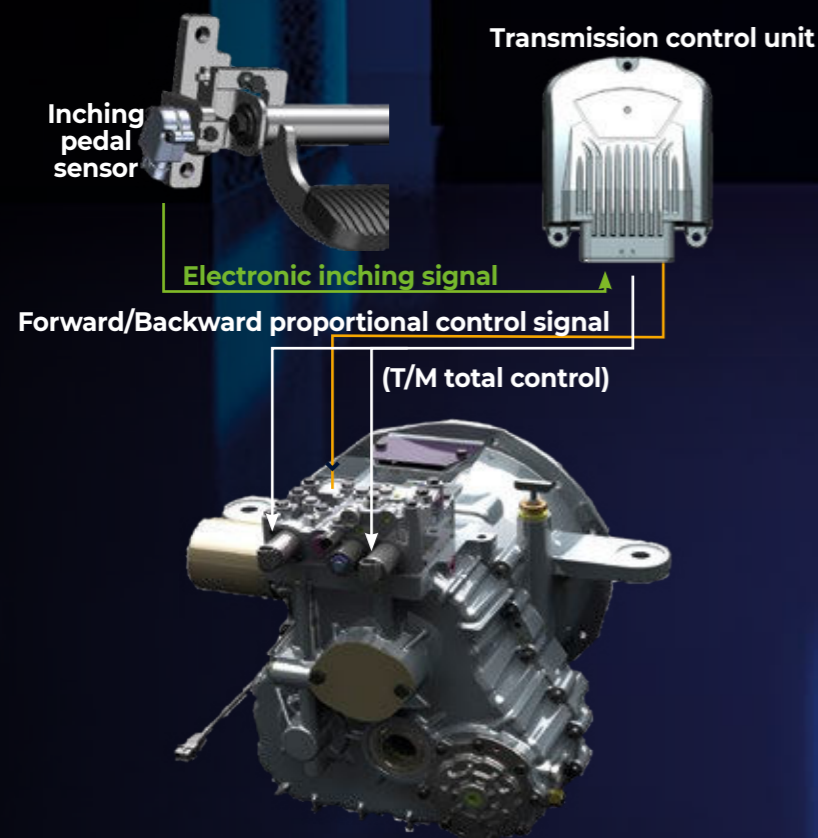
The new heavy-duty radiator with improved air-flow and increased volume **+13%** keeps the engine constantly within the optimal temperature range, even in harsh and tough applications.

**Productivity & Efficiency**

# A LEGACY OF EXCELLENCE: HYUNDAI-DEVELOPED POWERTRAIN

The transmission and drive axle are developed entirely by Hyundai Core Motion for enhanced durability and practicality.

**NEW** The new electronically controlled transmission is fully adjustable in the cluster. This allows the set-up of the machine to any application.



- The clutch pack boosts power transmission capability by 22% and increases T/M oil capacity for better efficiency in high-load working conditions.

# FULL DIAGNOSTICS FOR SMOOTH OPERATIONS AND REDUCED COSTS

- The 9V Series features an enhanced instrument cluster with an easy-to-use, full colour display enabling a full set-up, diagnostics and maintenance follow-up. More features like the DCSR system (prevents high-speed directional change) are available for activation. The DCSR system reduces tyre wear and protects the transmission in order to reduce operating and servicing costs.



- NEW** The drive axle is equipped with a planetary reducing gear offering resistance to torque changes. The sump capacity has been increased by 46% for better performance and durability of the wet disc brakes in environments requiring high brake usage. Thanks to its enhanced durability, the wet disc also reduces maintenance costs.



\* Photo may include optional equipment.

**Operator Comfort**

# OUTSTANDING ERGONOMICS FOR PRODUCTIVITY AND OPERATING PLEASURE

The cabin is designed to provide every operator with a comfortable working environment that boosts productivity and reduces fatigue, even in tough working conditions. The most important controls are positioned within easy reach and a range of options helps you to tailor the cabin to your needs.



\* Photo may include optional equipment.

**"I'm really impressed  
by how smooth and  
quiet it is. It's a  
completely different  
driving experience!"**

## Better visibility and cabin comfort

The mast, carriage, and head guard are designed to provide the operator with **maximum visibility** for improved efficiency and **peace of mind** while working.

A **premium quality Grammer** seat is installed as standard, ensuring a comfortable driving position all day, even in rough working conditions.

The **spacious full floating cabin** with air conditioning and/or heater is available as:

- Partial cabin
- 1-door or 2-door (split type) version

Several air-ducts, like the windshield defrosting air duct, are integrated in the headliner for perfect air-distribution inside the cabin for more comfort.



## Cabin options **OPTION**



## LED lights **OPTION**



The LED lights offer the optimal visibility under any conditions.

## Rear grip **OPTION**

While driving backwards, the grip offers comfort to the operator. The integrated horn button increases safety.



## Reduced steering wheel size **NEW**

The **steering wheel diameter** has been reduced by 70 mm to **minimise operator fatigue** and a Danfoss 4th generation Obitrol steering unit **reduces noise while improving rotation**.

Effect:

1. Reduced radius of rotation
2. Increased operator steering convenience



## Operator Comfort

# TECHNOLOGY AT YOUR FINGERTIPS FOR FULL CONTROL

The enhanced cluster makes it easier to manage and control all key functions. For best-in-class operating sensitivity, these stage V forklifts can be further equipped with fingertip control, allowing optimal usage and thus improving productivity.

## Enhanced control cluster NEW

The enhanced instrument cluster makes it easier to manage the machine set-up, diagnostics and maintenance. All **settings can be entered directly into the cluster**, eliminating the need for an external computer.

- **Key monitoring functions:** OPSS, DPF replay, posture equipment maintenance, clock, service hour meter, fuel, temperature, driving direction and transmission level.
- **Configuration and diagnosis:** maximum driving speed, maintenance management, engine diagnosis, passcode setting.
- **Additional functions (option):** rear view camera, front & rear view cameras on separate monitor, load indicator, auto-tilting levelling.

The above functions are available in 13 languages via the cluster.



**"The cabin is incredibly comfortable – everything is easy to reach, I have full control and I don't feel tired at all at the end of the day. The fingertip control is optional, but, honestly speaking, every customer should take it – so easy, precise and fully programmable."**

## Fine-tuned fingertip control for faster response OPTION



To ensure **top-class fingertip control**, Hyundai is partnered with **Buchholz**.

- The working speed of all functions is programmable in the cluster.
- The response time (within 0.1 s) and fine-tuning capability of fingertip control are improved, thanks to a high-end control system.
- The directional switch is integrated into the fingertip control for more comfort.

## Better operating sensitivity



- The manual levers are in perfect reach for the driver, next to the operator's seat.
- The directional switch is integrated into the lift/lower lever for perfect ergonomics.
- The new Buchholz MCV offers a better controllability and a higher working speed which increases the productivity.

Safety

# CREATING A SAFER WORKING ENVIRONMENT

Small details can make a huge difference when it comes to safety and security. By helping to ensure an accident-free workplace, the new 9V Series forklifts help you to achieve the peace of mind and productivity you need to safeguard your business.

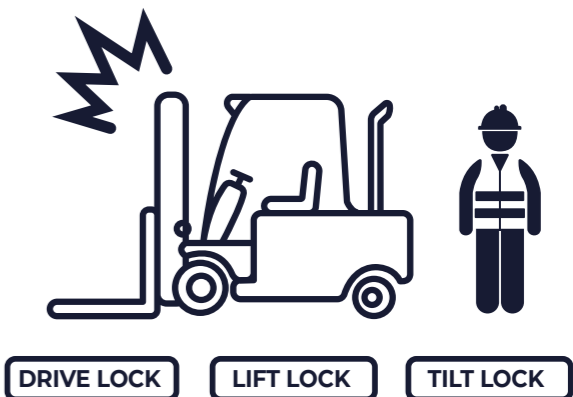


## Auto parking brake and hill start assist



The parking brake operates automatically when the power is disengaged in order to prevent accidents caused by human error. Hill Start Assist Control (HAC) prevents backsliding when restarting on a slope.

## OPSS (Operator Presence Sensing System)



The OPSS System restricts driving, lifting and tilting, and it kicks in automatically when the operator leaves the seat to prevent accidents. It operates in conjunction with the auto parking brake to contribute to a safer workplace.

## Machine position warning

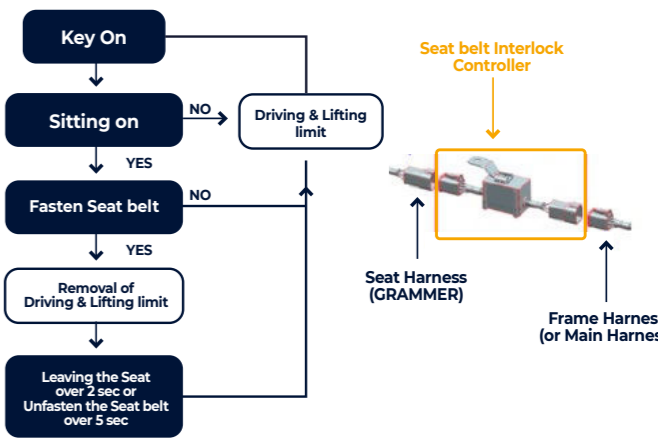


While driving the machine-control-unit (MCU) senses longitudinal and lateral movement and **alerts the driver if the preset stability values are exceeded.**

## Passcode-protected start-up

Operators can restrict machine operation by setting a passcode. This **prevents theft, break-ins or accidents** that could occur due to unauthorised access when the machine is not in use.

## Seat belt interlock system OPTION



The seat belt interlock system protects operators from injury by **restricting equipment** operation if the seat belt warning has not been observed or if the operator unfastens the seat belt while driving.

\* Photo may include optional equipment.

Serviceability

# BUILT FOR QUICK, EASY SERVICING

The peace of mind that comes with fast, low-effort servicing is also part of the Hyundai 9V Series philosophy. These forklifts are designed to make maintenance as convenient as possible. All components and materials have been optimised to ensure a long, trouble-free service life.

## Easy maintenance

The wide opening angle of the engine hood in combination with tool-less removable panels **reduces equipment downtime** by providing easy access to parts requiring regular maintenance.



## Easy inspection of the after-treatment device



For greater convenience, the counter-weight opening has been made as large as possible. This **eliminates the need to remove the counterweight** for inspection or exchange of the after-treatment device.

## Engine diagnostics and service scheduling

✕ Maintenance				
Engine Failure History				▶
Maintenance Management				▶
Signal Status				▶
User Password Change				▶

✕ Maintenance Management				
Item	Interval	Elapse	Count	Alarm
Axle Gear Oil	100	105	0	●
Transmissing Oil	100	105	0	●
Filter	100	105	0	●
Tank Air Breathe...	250	105	0	●
Engine Oil	500	105	0	●
Element	500	105	0	●

Engine and transmission failure codes can be checked in the cluster with **no need for a separate diagnostic tool**. Replacement timing for consumable parts is set in the cluster and informs the operator on the screen from 30h before scheduled maintenance service on the screen.

## Convenient after-treatment device

The automatic DPF regeneration function is supported by a hydraulic device which maintain the exhaust gas temperature in order to secure the function of the DPF.

## Water- and dustproof fuse and relay box



All fuses and relays are centralized in three boxes with **enhanced waterproof and dustproof protection IP65**. The boxes themselves are located behind the side cover panel for **quick access**.

Parts & Warranties

HYUNDAI GENUINE  
PARTS AND  
WARRANTIES:  
THE BEST WAY  
TO PROTECT  
YOUR INVESTMENT

Hyundai Genuine parts, accessories and warranty programmes are specially designed to keep your investment covered. They increase uptime and maintain the performance, comfort, and convenience that are built into your equipment.



Leader in standard  
warranties for  
Stage V forklifts!

Hyundai warranties are designed to give you the cover you need to build your business with confidence and peace of mind.

Best standard warranties  
in the industry

For extra reassurance, and to ensure maximum customer confidence, we are supplying all new stage V models with best industry standard warranties.

The **powertrain standard warranty** has been extended by **33%**, from 3,000 to **4,000 hours**.\*

The forklift **standard warranty** covers you for **two years or 3,000 hours, whichever comes first**.

Powertrain  
standard  
warranty  
**33%**



Optional and extended  
warranty periods

In addition to this standard coverage, optional and extended warranty periods are available, allowing you to benefit from full warranty coverage for longer, and even over the full service life of your forklift.\*

Forklift  
standard  
warranty\*  
**2 years**

\*or 3,000 hours,  
whichever comes first.

Hyundai Genuine parts

Hyundai Genuine parts have the same design as those installed when your machine left the factory. They are subjected to rigorous quality inspections and tests to make sure they meet Hyundai's

strict requirements for quality and durability. As well as minimising downtime, this helps to ensure peak performance in every task. In the 13,000 m<sup>2</sup> warehouse, **Hyundai covers over 96% of all Genuine Parts**. With one of Europe's most advanced automated warehousing systems, we are able to maintain availability and efficient delivery of all our Genuine Parts.

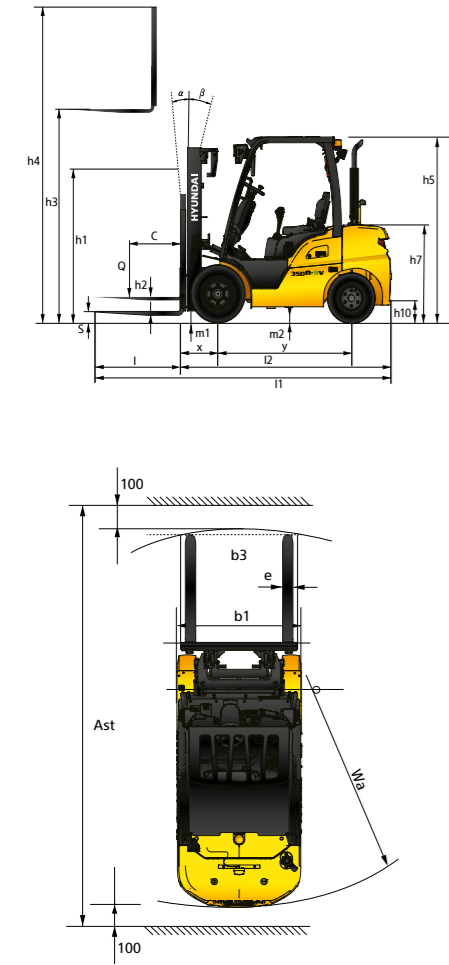
A network you can rely on

HCEE prioritises quick, reliable intervention to keep your equipment running reliably. Thanks to the **extended dealer network across Europe, we will always be close by to ensure a timely and efficient solution**. Moreover, we guarantee a 24-hour delivery service across our European dealer network.

\*Conditions apply. Please discuss the optimal solution for your needs with your dealer.

Specifications

25/30D - 35DN-9V



Distinguishing marks	1.1	Manufacturer				Hyundai	Hyundai	Hyundai
	1.2	Manufacturer's Model Designation				25D-9V	30D-9V	35DN-9V
	1.3	Drive				Diesel	Diesel	Diesel
	1.4	Type Of Operation				Seated	Seated	Seated
	1.5	Load Capacity	C	kg		2,500	3,000	3,500
	1.6	Load Centre Distance	x	mm		500	500	500
	1.8	Load Distance (Centre of Drive Axle to Fork)	y	mm		468	468	468
	1.9	Wheelbase		mm		1,650	1,700	1,700
	2.1	Service Weight			kg	3,871	4,300	4,616
Weights	2.2	Axle Loading, Loaded	Front / Rear			kg	5,548 / 823	6,349 / 951
	2.3	Axle Loading, Unloaded	Front / Rear			kg	1,581 / 2,290	1,641 / 2,659
							1,588 / 3,028	
Tyres/chassis	3.1	Tyres				Pneumatic	Pneumatic	Pneumatic
	3.2	Tyre Size	Front			7.00-12-12PR	8.15-15-14PR	8.15-15-14PR
	3.3	Tyre Size	Rear			6.50-10-12PR	6.50-10-12PR	6.50-10-12PR
	3.5	Number of Wheels (x = Driven Wheels)	Front / Rear			2 x 2	2 x 2	2 x 2
Dimensions	3.6	Tread	Front		mm	999	1,005	1,005
	3.7	Tread	Rear		mm	980	980	980
	4.1	Tilt of Mast / Fork Carriage Forward / Backward	$\alpha / \beta$	degree		6 / 10	6 / 10	6 / 10
	4.2	Height, Mast Lowered	h1	mm		2,175	2,190	2,260
	4.3	Free Lift	h2	mm		155	155	155
	4.4	Lift Height	h3	mm		3,305	3,305	3,305
	4.5	Height, Mast Extended	h4	mm		4,485	4,485	4,485
	4.7	Height of	Overhead Guard	h5	mm	2,160	2,180	2,180
			Cabin			2,170	2,190	2,190
	4.8	Seat Height / Stand Height Rel. to SIP	h7	mm		1,187	1,207	1,208
	4.12	Coupling Height	h10	mm		310	300	295
	4.19	Overall Length	l1	mm		3,672	3,751	3,816
	4.20	Length to Face of Forks	l2	mm		2,622	2,701	2,756
	4.21	Overall Width	b1	mm		1,200	1,230	1,230
	4.22	Fork Dimensions	l x e x s		mm	45 x 100 x 1050	45 x 122 x 1050	45 x 122 x 1050
	4.23	Fork Carriage ISO 2328, Class / Type A, B				2A	3A	3A
	4.24	Fork-Carriage Width	b3	mm		1102	1102	1102
	4.31	Ground Clearance, Below Mast, Loaded	m1	mm		130	145	145
	4.32	Ground Clearance, Centre of Wheelbase	m2	mm		172	171	171
	4.34.1	Aisle Width For Pallets 1000 X 1200 Crossways	Ast	mm		4,020	4,095	4,148
	4.34.2	Aisle Width For Pallets 800 X 1200 Lengthways	Ast	mm		4,220	4,295	4,348
	4.35	Turning Radius	Wa	mm		2,352	2,427	2,480
	4.36	Smallest Pivot Point Distance		mm		714	731	731
Performance data	5.1	Travel Speed	Loaded / Unloaded		km/h	16.4 / 17.7	17.2 / 18.8	16.9 / 18.8
	5.2	Lift Speed	Loaded / Unloaded		mm/s	580 / 610	580 / 610	480 / 500
	5.3	Lowering Speed	Loaded / Unloaded		mm/s	510 / 500	550 / 500	510 / 480
	5.6	Max. Drawbar Pull	Loaded / Unloaded		N	27,399 / 25,957	25,777 / 24,257	26,016 / 24,162
	5.8	Max. Gradeability	Loaded / Unloaded		%	42.7 / 21.5	34.1 / 20.1	30.6 / 17.7
	5.10	Service Brake				Hydraulic	Hydraulic	Hydraulic
Engine	7.1	Engine Manufacturer / Type				HMC D4HB	HMC D4HB	HMC D4HB
	7.2	Engine Power Acc. to ISO 1585		kW / rpm (hp / rpm)		47.8 / 2,300 (64.1 / 2,300)	47.8 / 2,300 (64.1 / 2,300)	47.8 / 2,300 (64.1 / 2,300)
	7.3	Maximum Torque		kgf.m / rpm		24.1 / 1,600	24.1 / 1,600	24.1 / 1,600
	7.4	No. of Cylinders / Displacement		EA / cc		4 / 2199	4 / 2199	4 / 2199
	7.5	Fuel Consumption Acc. to Vdi Cycle		l/h		2.7	3	3.2
Additional data	8.1	Type of Drive Control		AC		Power Shift	Power Shift	Power Shift
	8.2	Operating Pressure, System / Attachments		bar		200 / 140	200 / 140	200 / 140
	8.3	Oil Volume For Attachments		LPM		55	55	55
	8.5	Trailer Coupling, Type Din				PIN	PIN	PIN

\* The above specifications are based on V300 mast.

\* In accordance with guideline 2198, this specification sheet provides details of the standard truck only.  
Non-standard tyres, different masts, optional equipment, etc., may result in different values.

STANDARD AND OPTIONS

	Part	Description	25D-9V	30D-9V	35DN-9V
Operation room	OHG	Overhead Guard *25D-9V : 2,160mm, 30D-9V & 35DN-9V : 2,180mm	●	●	●
		Overhead guard with Rain Cover *25D-9V : 2,170mm, 30D-9V & 35DN-9V : 2,190mm	○	○	○
	Cabin	Cabin Options - One door, Two door	○	○	○
		Partial Cabin - Front glass with Wiper, Rear glass & Top Rain Cover	○	○	○
	A/C	Air Conditioner and / or Heater			
		The air conditioning system contains fluorinated greenhouse gas refrigerant R134a. (Global Warming Potential: 1,430) The system contains 0.55 kg refrigerant representing a CO <sub>2</sub> equivalent of 0.787 metric tonnes.	○	○	○
	Seat	Full Suspension Synthetic leather Seat + Orange Belt, Arm Rest, Seat Switch	●	●	●
		Seat Accessories - Long Backrest,Belt Switch, Heated Seat	○	○	○
	Lever	Lever - General	●	●	●
		Lever - Fingertip control	○	○	○
Mast & attachment	Ect.	Radio & USB	○	○	○
		Rear Horn Grip	●	●	●
	Mast	2 Stage mast - Standard (V)	●	●	●
		2 Stage mast - Single full free (VF)	○	○	○
		3 Stage mast - Single full free (TF), Dual full free (TS)	○	○	○
	Fork	1,200mm Fork	●	●	●
		Fork Options - 900mm~2,300mm	○	○	○
	Carriage	Carriage - Narrow (1,102mm / Hook)	●	●	●
		Carriage Options	○	○	○
Hydraulics	Attachment	Wide (1,442mm / Hook)	○	○	○
		Hook-on Side Shift	○	○	○
		Integrated Side-Shift			
	MCV & Hoses	Side-Shift & Fork Positioner	○	○	○
		3 Spool MCV + attached piping for V330 mast	●	●	●
		MCV Options - 4 Spool	○	○	○
	Tyres	Attached Piping for All MCVs & Masts	○	○	○
		Brake - General type	●	●	●
		Tyre - Pneumatic (Single)	●	●	●
Visibility	Tyre Options	Solid	○	○	○
		Non Marking	○	○	○
		Pneumatic Double or Solid Double tyre (15" wheel rim)	○	○	○
	Lamp	Working Lamp - Front Bulb	●	●	●
		Working Lamp Options - Front LED, Rear LED	○	○	○
		Rear Blue Spot	○	○	○
	Mirror	LED Beacon Lamp	○	○	○
		Mirror - Panorama	●	●	●
		Mirror Options - L/H & R/H Back Mirror, Outside Mirror	○	○	○
Convenience	Camera	Rear View Camera only	○	○	○
		Front & Rear View Camera	○	○	○
	-	Knob-Switch with Direction & Horn	●	●	●
		Auto Tilt Levelling	○	○	○
		Load Indicator	○	○	○
	Safety	Hydraulic Pressure Indication On Display	●	●	●
		OPSS - Travel & Mast	●	●	●
		Master Switch to cut-off electricity from battery	●	●	●
Others	-	Hazard Switch	○	○	○
		Steel Side Cover	○	○	○
		Plastic Side Cover	●	●	●
	-	Recycling Option (Rear Tyre Cover + Under Cover)	○	○	○
		Fuel Cap with Key	○	○	○
		Pre-cleaner	○	○	○
		Hyd. Oil-VG46	●	●	●
		Hyd. Oil Options - VG68 for Tropical, VG15 & VG32 for Cold Area	○	○	○

● :STD / ○ :OPT



\*Standard and optional equipment may vary by country. Contact your Hyundai dealer for more information. \*The machine may vary according to International standards. European specifications may differ from Korean specifications mentioned in the brochures. \*The photos may include attachments and optional equipment that are not available in your area. \* Materials and specifications are subject to change without advance notice. \*All imperial measurements rounded off to the nearest pound or inch.

Hyundai Construction Equipment Europe NV  
Hyundailaan 4, 3980 Tessenderlo, Belgium  
Tel: (+32) 14-56-2200 Fax: (+32) 14-59-3405

Contact your Hyundai dealer.  
[hyundai-mh.eu](https://hyundai-mh.eu)

Address