

KÅBE-MATTAN

Entrance Matting



Kåbe-Mattan AB

Entrance Matting

In 1944 our struggle began against the horrible dirt from the streets. A caretaker who worked for a Swedish bank named "Stockholms Enskilda Bank" in Stockholm had become tired of always having to sweep the dirt from the streets out of his bank.

The caretaker, had an idea. He found some wooden batons and some pieces of rubber strips and nailed them together. The first Kabe Mat was born! The first step in our struggle against the horrible dirt of the streets was taken, and is still going on today with undivided force.

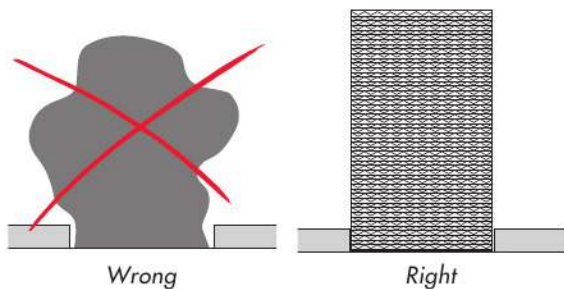


It worked well

That's how the foundation was laid for what has proven to be one of the best working entrance mats - Kabe Mat Original, the mat that wipes your shoes just by walking over it.

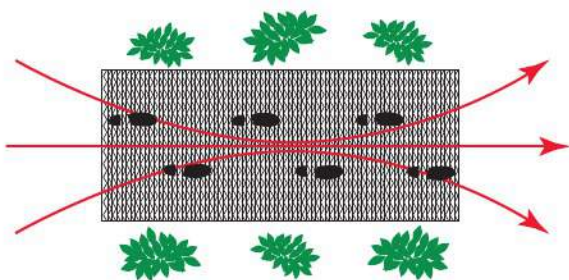
That's good, bearing in mind that the only place you normally wipe off your shoes is at home, otherwise you have to clean out the dirt you have dragged in by yourself!

Through the years, since the first Kabe Mat was born, we have developed to become experts in finding good entrance solutions. Nowadays we are able to offer a complete range of entrance matting with accessories. Our best known and most effective mat is Kabe Mat Original. What we don't know about entrance matting isn't worth knowing!



Get it right from the start

A lot of the dirt that's dragged into a building can be stopped in a simple and effective way. Remember to consider your wipe off zone when you are planning your new floor. If you have forgotten the wipe off zone, it is never too late to correct it. We can help you.



Design

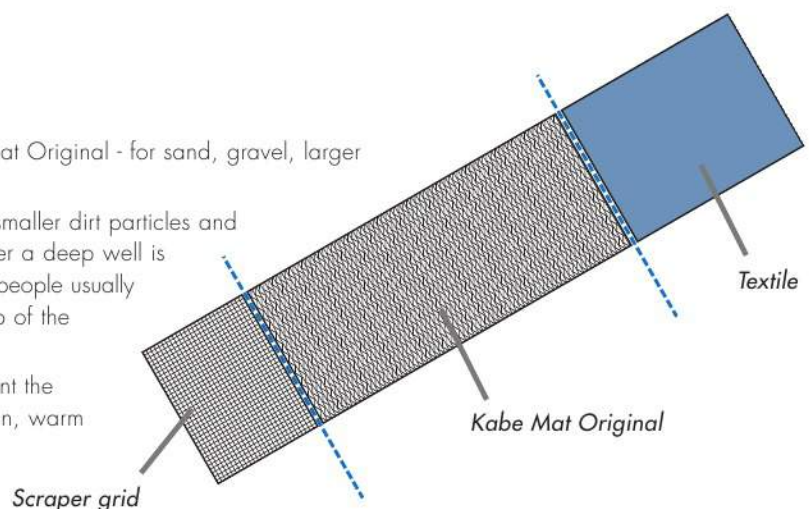
Hardly no-one stops to wipe their shoes in a public entrance area. The dirt must be walked off. In order to achieve the right function it is important to have the right length and width on the wipe off zone and make sure that people pass it when they walk into a building. Strive to take at least 3 steps with each foot on each zone.

At least two steps

Try to think in at least two steps to get the best function:

- The first step should be a rubber lamella mat - Kabe Mat Original - for sand, gravel, larger dirt particles and slush in the wintertime.
- The second step should be a textile mat for collecting smaller dirt particles and to absorb moisture. A scraper grid made from steel over a deep well is also a good solution, especially in the wintertime when people usually are more aware of the dirty streets and hopefully stamp of the dirt and slush from their shoes on the scraper grid.

Also remember that other measures can be taken to prevent the dirt from being dragged onto the floors. For example clean, warm and hard made surfaces outside the entrance.





Stockholm Skavsta airport in Nykoping, Sweden. Kabe Mat Original strengthened type in combination with Kabe Coir mat.



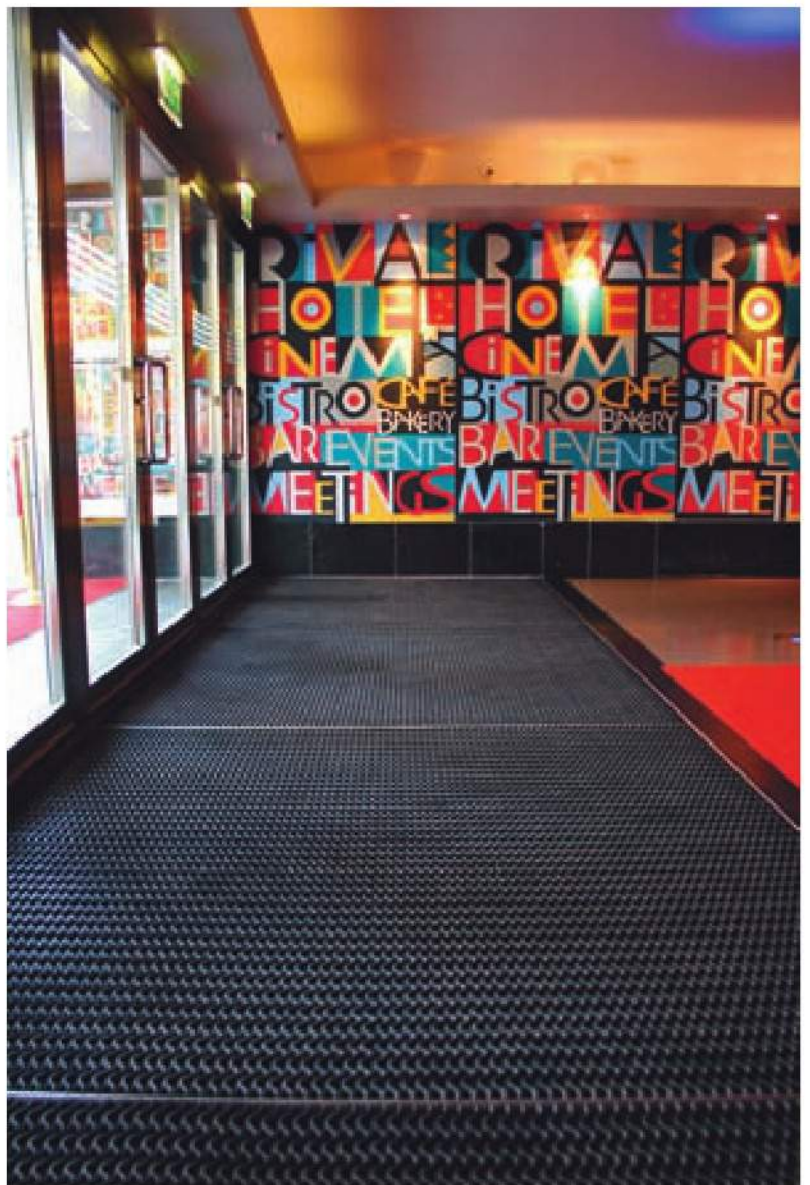
Entrance to a residential building in Stockholm. Kabe Mat Original, gold anodized, with Kabe Ramp Frame type 2, gold anodized.



Moderna Museet (museum of modern art) in Stockholm. Kabe Mat Original in combination with Kabe Coir Mat.



Tallink ferry terminal in Stockholm. Kabe Mat Original, black anodized, strengthened type in combination with Coral Classic 4401.



Hotel Rival in Stockholm, Sweden. Kabe Mat Original, black anodized.



IKEA in Älmhult, Sweden. Kabe Mat Original.



NK in Stockholm, Sweden. Kabe Mat Original strengthened for shopping trolleys on Kabe Outlet Grid.



Kabe Mat Original

A combination of doormat and grating, for indoor and outdoor use.

The corrugated rubber strips collapse slightly under the weight of visitors and, as the weight is removed, the rubber strips spring back to the upright position with sufficient force to remove dust, dirt and moisture from the sole of the shoe, therefore shoe soles are cleaned without wiping. The dirt removed from the shoe falls through the cavities formed by the corrugations and is trapped beneath the mat.



Materials and construction

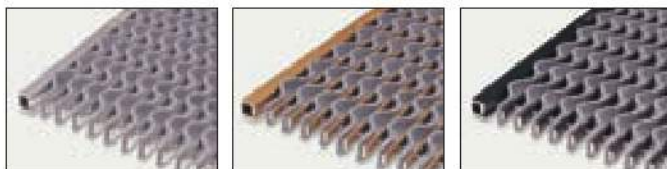
- Flat bars:** Aluminium alloy EN AW-6005-A-T6 dimension 12 x 4.5 mm.
- Rubber strips:** Special compound resistant to extreme changes of temperature; EPDM 70° Shore; dimension 22 x 3.7 mm.
- End profile:** U 18 x 18 x 18 x 2 mm.
- Mat height:** Standard 22 mm; 18 mm for existing mat wells height 15-19 mm.
- Sizes:** Made to measure max. 2,000 x 5,000 mm (A x B) in one piece. Larger areas are divided. Shaped mats can be manufactured according to customer specifications.
- Joints:** Rubber strips and aluminium flat bars are riveted together. The mat is held together with rivets and Ø 2,3 mm stainless steel wire.
- Weight:** Approx. 12 kg/M².
- Strengthening:** Rubber bushings
- Surface treatment:** Aluminium in natural colour, black anodized or gold anodized.



Globe Arena in Stockholm, Sweden. Kabe Mat Original and Kabe Mat Original Grafite.

Kabe Mat Original Grafite

Kabe Mat Original with grey rubber as an alternative or in combination with Kabe Mat Original with black rubber. The primary function to stop dirt and moisture being dragged onto the floor is similar to the black rubber. The difference is the possibility to choose another colour of rubber, or to make simple geometrical patterns in the entrance, space permitting.



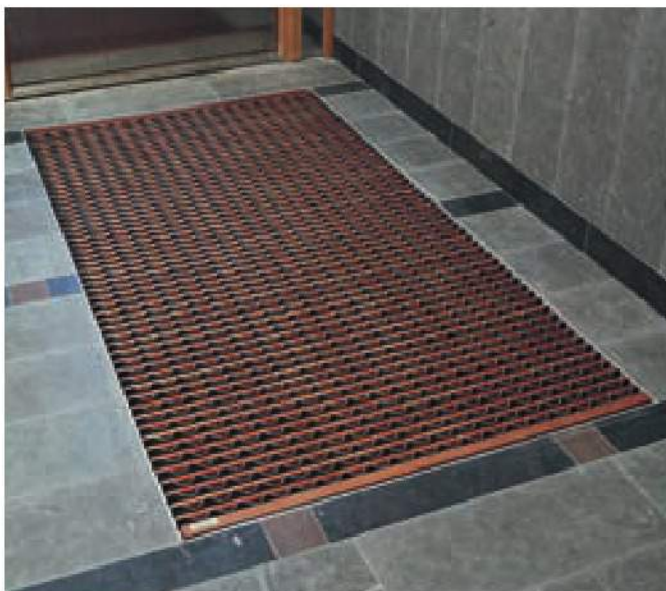
Materials and construction

Flat bars:	Aluminium alloy EN AW-6005-A-T6 dimension 12 x 4,5 mm.
Rubber strips:	Special compound resistant to extreme changes of temperature; EPDM 70° Shore; dimension 22 x 3.7 mm.
End profile:	U 18 x 18 x 18 x 2 mm.
Mat height:	Standard 22 mm
Sizes:	Made to measure max. 2,000 x 5,000 mm (A x B) in one piece. Larger areas are divided. Shaped mats can be manufactured according to customer specifications.
Joints:	Rubber strips and aluminium flat bars are riveted together. The mat is held together with rivets and Ø 2,3 mm stainless steel wire.
Weight:	Approx. 12 kg/M ² .
Surface treatment:	Aluminium in natural colour, black anodized or gold anodized.



NK in Stockholm, Sweden. Kabe Mat Original Grafite, black anodized.





Kabe Eco Mat

An exclusive classic!

The original model of Kabe Mat in a modernised design. Made from wooden batons and rubber strips as it was produced from the beginning in the 1940's. An entrance mat for the exclusive entrance area, combining extraordinary aesthetics and function. The mat is rollable and is double sided. Kabe Eco Mat is suitable for indoor use.



Materials and construction

- Wooden batons:** Pine, dimension 17 x 12 mm.
- Rubber strips:** Special compound resistant to extreme changes of temperature; EPDM 70° Shore; dimension 22 x 3.7 mm.
- End profile:** Oak, dimension 20 x 22 mm, brass profiles on request.
- Mat height:** Standard 22 mm.
- Sizes:** Made to measure max. 1,500 x 2,000 mm (A x B) in one piece. Larger areas are divided.
- Joints:** Rubber strips and wooden batons are stapled together. The mat is held together with Ø 2.3 mm stainless steel wire.
- Weight:** Approx. 19 kg/M².
- Surface treatment:** Wooden batons are stained normally in brown colour and varnished.



Kabe Mat de Luxe

Kabe Mat de Luxe is a development of the Kabe Mat Original for entrances with demands for a heel proof and functional entrance mat. Kabe Mat de Luxe is designed as Kabe Mat Original with its wave shaped rubber strips.

Instead of using the normal flat bars the rubber is threaded on a square tube in order to achieve the right distance between the lamellas for heel proofness. The mat is rollable and is double sided. Kabe Mat de Luxe is suitable for indoor use.



Materials and construction

Square tubes:	Aluminium alloy EN AW-6063-T6 dimension 12 x 12 x 1 mm.
Rubber strips:	Special compound resistant to extreme changes of temperature; EPDM 70° Shore; dimension 22 x 3.7 mm.
End profile:	U 18 x 18 x 18 x 2 mm.
Mat height:	Standard 22 mm.
Sizes:	Made to measure max. 1,740 x 2,000 mm (A x B) in one piece. Larger areas are divided. Shaped mats can be manufactured according to customer specifications.
Joints:	The mat is held together by Ø 2.3 mm stainless steel wire.
Weight:	Approx. 11 kg/M ² .
Surface treatment:	Aluminium in natural colour, black anodized or gold anodized.

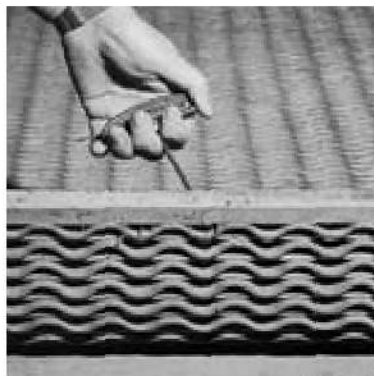
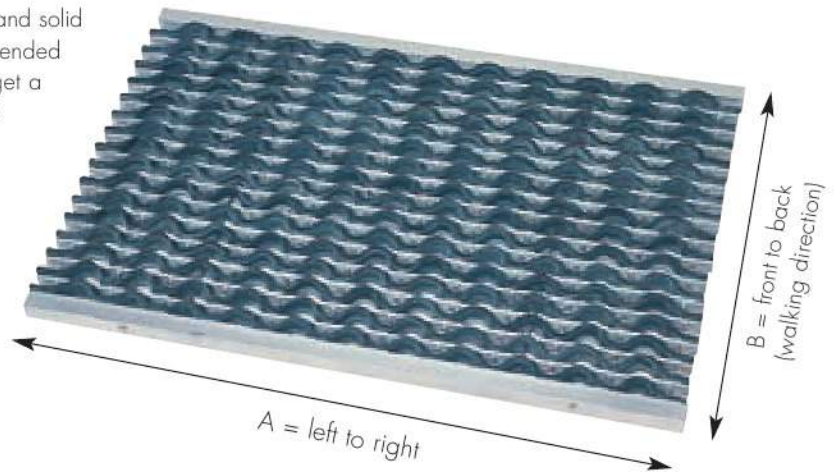


Installation

Kabe Mat Original should always be installed on an even and solid surface. If the mat is to be laid in a mat well, it is recommended to use a casting frame with lugs to protect the floor and get a professional looking installation, as for example the Kabe casting frame type 20R or 22R, see page 11.

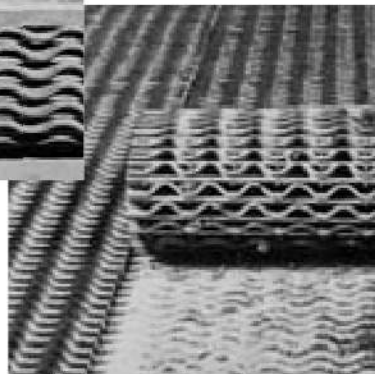
If the mat is to be laid directly on top of the floor, it is recommended to use a ramp frame in order to avoid the risk of tripping and to keep the collected dirt in the mat, as for example the Kabe ramp frame type 2, see page 11.

Always remember to give the measurements in the order A = left to right x B = front to back (walking direction) when ordering or specifying.



SPARE YOUR BACK!

No need to lift, just roll it up.



Maintenance

Kabe Mat Original is designed to scrape off sand and dirt from the shoe soles in an effective way. Due to the design a large quantity of dirt can remain in the mat without being noticed.

Kabe Mat Original doesn't have to be lifted completely in order to clean up the dirt that has gathered in the mat. Just take a simple grip in the stainless steel wire with the Kabe Mat lifting hook and lift the mat about 15 cm. Roll up the mat, then the sand and dirt can be removed. Long mats should be rolled up from both ends.

Kabe Mat Original is double sided and should be turned once a year to ensure maximum lifespan.

Strengthened Kabe Mat Original for department stores

If the Kabe Mat Original is to be used in a department store or a similar entrance, it must be the strengthened type of Kabe Mat Original (for shopping trollies etc.). The strengthened type should also be installed with studs in the foundation, when the entrance is on a slope.

We guarantee a load bearing capacity of up to 200 kg from a shopping trolley for the strengthened Kabe Mat Original.



Kabe Mat Original strengthened for shopping trollies





Conventum, congress and fair center in Örebro, Sweden. Kabe Combi Brush Mat

Kabe Combi Brush Mat

Rollable heel proof and durable scraper mat consisting of aluminium profiles, fitted with black or grey brushes. The brushes can be replaced or combined with textile inlays. The underside of the aluminium profiles is equipped with rubber strips in order to keep the mat steady on the surface and to decrease step sounds.

Suitable for indoor and outdoor use.



Materials and construction

Aluminium profiles: Aluminium alloy EN AW-6063-T6, dimension 35 x 17 mm.

Brush strips: Bristle-fused strips, black or grey. The brush strips are fixed with rubber plugs at the ends of each profile. Damaged brush strips can easily be replaced.

Textile: Coral Brush Activ or Coral Classic.

Mat height: Approx. 24 mm.

Sizes: Made to measure max. 2,000 x 1,500 mm (AxB) in one piece. Larger areas are divided. Shaped mats can be manufactured according to customer specifications.

Joints: The mat is held together by Ø 2.3 mm stainless steel wire.

Weight: Approx. 16 kg/M².

Surface treatment: Aluminium in natural colour, black anodized or gold anodized.

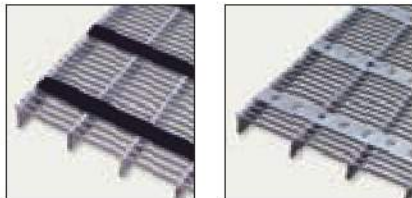




IKEA in Bäckebo, Sweden. Kabex Special Grid

Kabex Special Grid

Heel proof cantilever scraper grid made of hot dip galvanized steel. A durable scraper grid mainly for outdoor use. A good complementary product to Kabe Mat Original especially in the wintertime in countries with a lot of snow and slush. People are usually more aware of the dirt on the streets and often stamp off snow and slush on the scraper grid before entering a building.



Materials and construction

- Mesh distance:** 59 x 5 mm (free opening).
Span: Max 800 mm in the walking direction. (height 25 mm).
Grid size: Made to measure max. 1,480 x 1,000 mm (A x B) in one piece. Larger areas are divided. Standard height 25 mm are in stock, fitting standard casting frames type Kabe 25R. It can be an advantage to combine a number of standard sizes for a larger area in order to have a quick delivery.
Grid height: 25-50 mm in 5 mm intervals, normally 25 mm.
Open area: 43%.
Load bearing bars: Flat bar 25 x 3 mm in walking direction, (B).
Scraper strips: Kabex Special Grid comes in two variants. One with punched scraper strips in steel and one with scraper strips made from rubber for increased skid-protection.
Round steel: Ø 4 mm.
Weight: Approx. 22 kg/M² (height 25 mm) for grid with scraper strips in steel.
 Approx. 24 kg/M² (height 25 mm) for grid with scraper strips made from rubber.
Surface treatment: Hot dip galvanized according to SS-EN ISO 1461.

Kabex EM-Grid

Scraper grid made of expanded metal especially for small entrances. Good scraping effect in combination with good permeability and skid-protection. A grid that should be used in extreme circumstances, for example muddy Wellingtons, or in slippery surroundings.

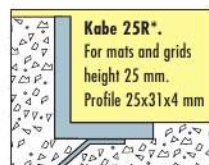
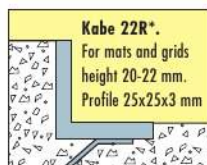
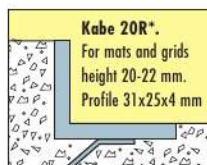
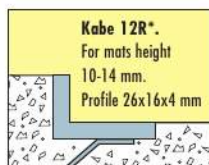


Materials and construction

- Mesh distance:** 35 x 15 mm (free opening).
Grid size: Made to measure max. 1,000 x 800 mm (A x B) in one piece. Standard sizes with height 25 mm are in stock, fitting the standard casting frame type Kabe 25R.
Grid height: 25 mm
Open area: 60%
Load bearing bars: Flat bar 25 x 3 mm in the walking direction, (B).
Edge strip: Flat bar 25 x 3 mm
Weight: Approx. 16 kg/M².
Surface treatment: Hot dip galvanized according to SS-EN ISO 1461.

Casting frame - Ready to install

Kabe casting frames are made of a special aluminium alloy that is resistant to concrete. The frames have turnable lugs with a length of 100 mm, riveted to the lower flange. The lugs can be turned to the desired direction when casting. We have 4 different types of casting frames to fit different heights of mats and grids.



* Standard sizes in stock has the ending RS.



Casting frame - For assembling on site

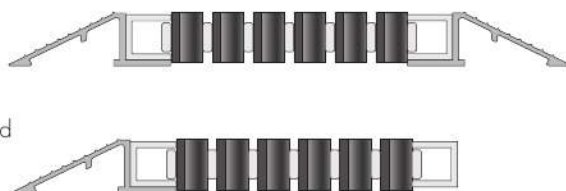
Kabe casting frames are made of a special aluminium alloy that is resistant to concrete. The casting frames are supplied in loose made to measure lengths with 45° corners ready to be easily assembled on site. The frames are easy to handle due to the light weight and can be transported in a bundle.



Kabe Ramp frame - Type 1

Kabe Ramp Frame type 1 is used for Kabe Mat Original installed on top of the floor. Primarily in entrances where it is impossible to arrange a mat well due to practical or economical reasons.

The function of the Kabe Ramp Frame type 1 is to avoid tripping on the mat and to protect the edges of the mat. Kabe Ramp Frame type 1 can only be mounted on the front and/or back on the Kabe Mat Original.



Kabe Ramp frame - Type 2

Kabe Ramp Frame type 2 is used for mats and scraper grids with a height 20-22 mm installed on top of the floor or on level ground. Primarily in entrances where it is impossible to arrange a mat well due to practical or economical reasons.

Kabe Ramp Frame type 2 can be installed directly onto the floor with 1, 2, 3 or 4 sides depending on the conditions. Kabe Ramp Frame type 2 is equipped with rubber strips underneath to prevent dirt and water from leaking and to keep it steady on the floor. Any kind of mat or scraper grid with a height 20-22 mm can be used in the Ramp Frame.

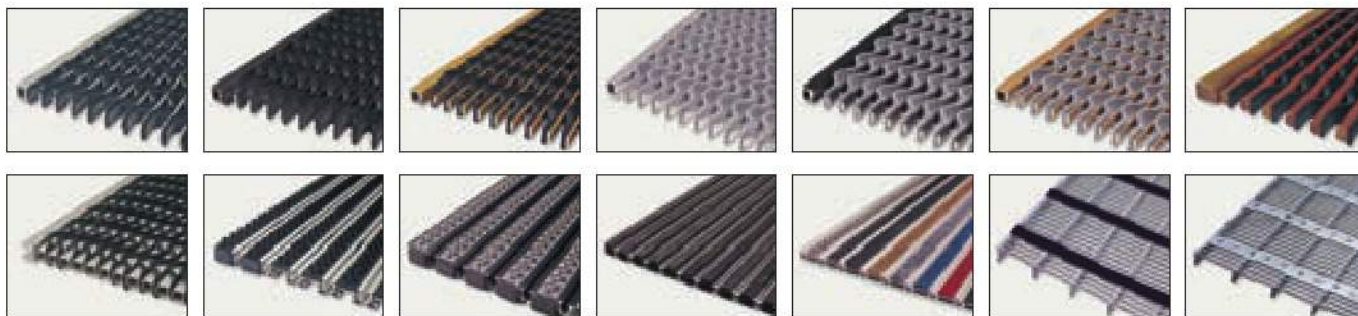


Kabe Outlet Grid

Open cantilever hot dip galvanized steel support for Kabe Mat Original. It is used to get a self cleaning function when dirt falls through both the mat and the outlet grid down in a deeper well. The well only has to be cleaned perhaps 1-2 times per year depending on the intensity of the pedestrian traffic. Kabe Outlet Grid is made of perforated sheet welded on to a grating.

The perforated sheet works as a firm and level surface for the mat and as a flange against the edge of the well. Its open structure allows the dirt to fall through.





Kåbe-Mattan AB
 Gropen • SE-716 93 Fjugesta • Sweden
 Tel. +46 (0) 585 255 50 • Fax. +46 (0) 585 255 59
 mail@kabe-mattan.se • www.kabe-mattan.se

We reserve the right to make construction changes