

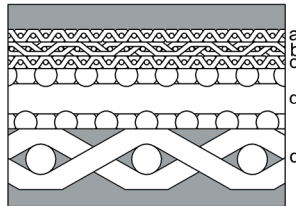
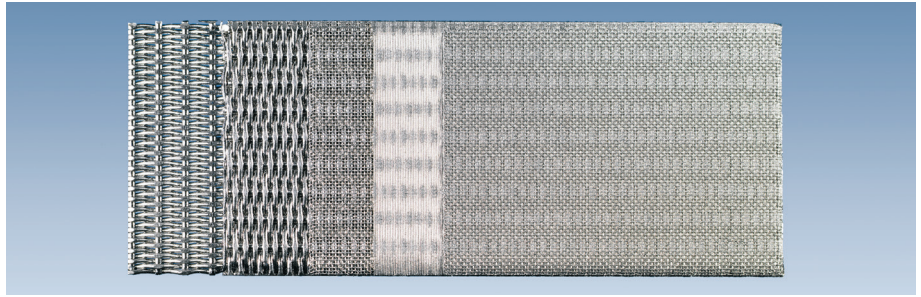
**BOPP**

Premium Sinter Products  
made in Switzerland



## POREMET Five layer construction

**Poremet** is a steel plate style filter medium consisting of five layers sintered together using heat and pressure. Constructions up to 10 layers possible. The layers of mesh are carefully selected to achieve an optimum combination of stability, fine filtration capabilities, permeability and cleanability.



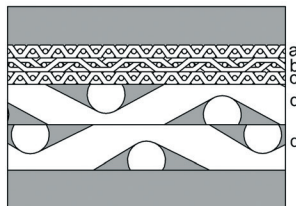
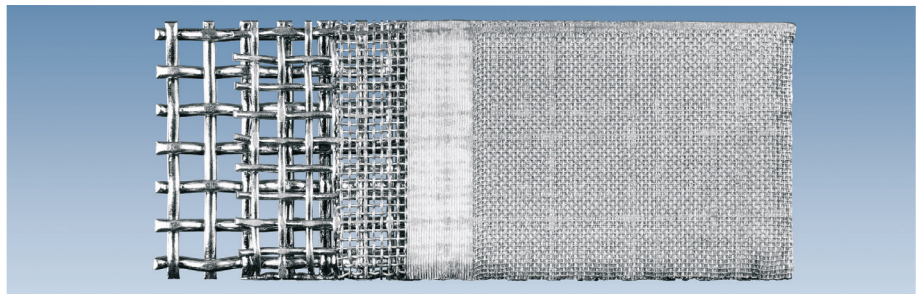
- a Protects the filter mesh against damage
- b The filter mesh determines the fineness of the deposit
- c Dispersal/drainage mesh
- d Support mesh

## ABSOLTA Five layer construction

**Absolta N** is a laminated sintered mesh similar to Poremet achieving optimum flow rates combined with excellent cleanability/backwashing properties.

**Absolta D** is the five layer version with a reduced thickness of ca. 1.70 to 1.80 mm

Absolta is used widely in liquid and gas filtration for its high performance flow and backwashing properties. Like Poremet, Absolta can be combined with a wide range of support meshes, enabling the material to handle significant loads.



- a Protects the filter mesh against damage
- b The filter mesh determines the fineness of the deposit
- c Dispersal/drainage mesh
- d Support mesh

### Materials

DIN 1.4404/AISI 316L, DIN 1.4539/AISI 904L (Uranus B6), Hastelloy compounds.  
Other specifications and materials on request.

### Advantages compared with a single layered filter mesh:

- Considerably increased mechanical strength
- Greater rigidity
- Ease of fabrication

### Typical applications:

- Filtration of highly viscous liquids
- Nutsch filters
- Centrifuges
- Fluidised bed applications
- Aeration of silos
- Biotechnology

## AVAILABILITY

### Panels

Maximum size 1200 x 1200 mm

### Discs

Die-stamped: diameter from 10 to 300 mm.  
Laser cut: diameters up to 1200 mm

### Sections

Weld-freeshapes within maximum panel sizes

### Edges

Cut or fused

### Welded sections

The width/thickness of the weld is dependent upon the layered construction selected

### Cylinders/candles

Smallest available diameter  
Poremet 14 mm (excluding fifth layer), 25 mm (including fifth layer)  
Absolta 30 mm (excluding fifth layer), 40 mm (including fifth layer)

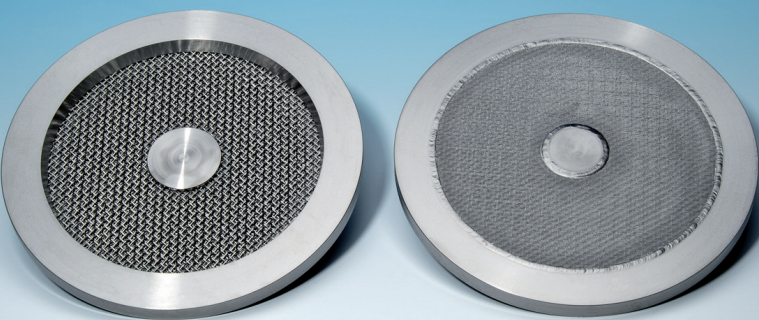
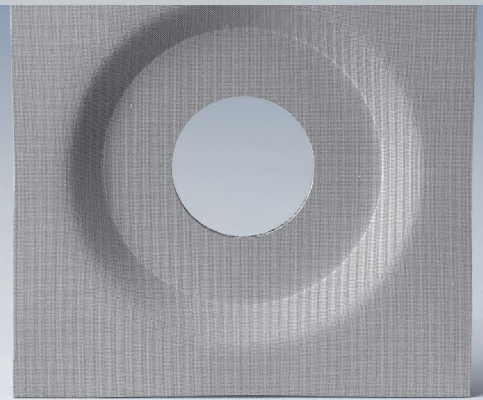
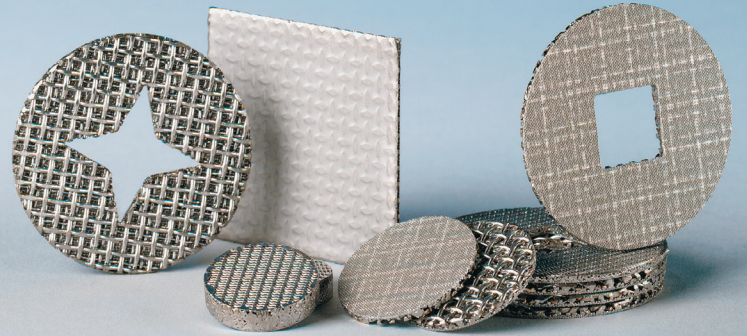
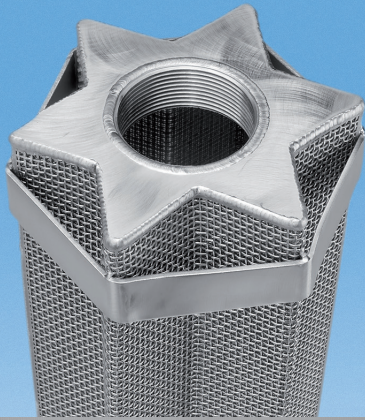
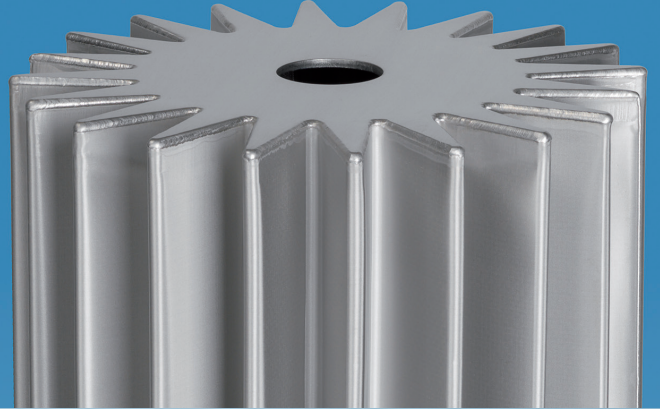
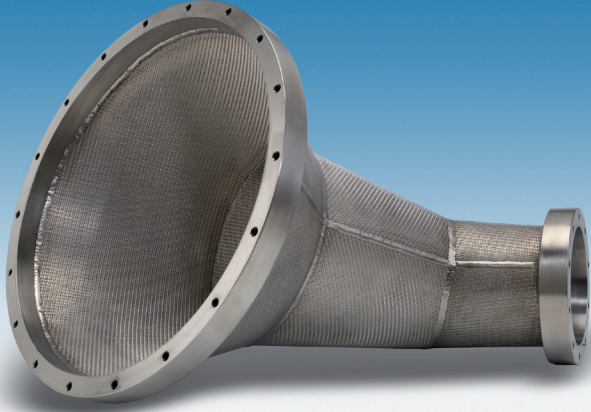
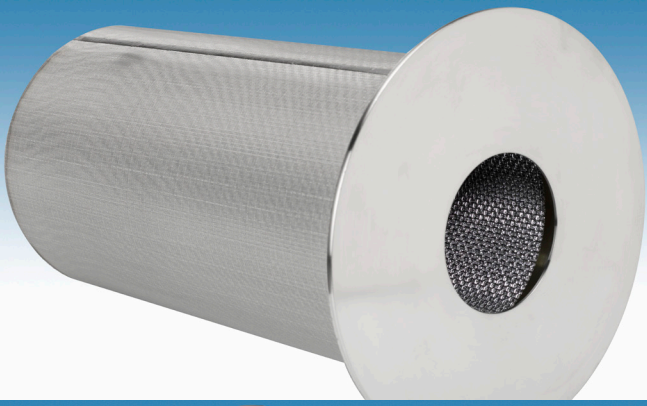
### Leaves/plates

Largest available leaf diameter 3200 mm (welded)  
Larger diameters available in segments

### Other sinter products

- Topmesh three/two layer
- Poreflo double/triple layer
- Rigid Mesh single/double layer
- Customized Mesh combinations







# The BOPP Group

Head Office in Zurich



## ■ Switzerland

### G. BOPP + CO. AG

Bachmannweg 21  
CH-8046 Zürich  
Phone +41 (0)44 377 66 66  
E-Mail [info@bopp.ch](mailto:info@bopp.ch)  
[www.bopp.com](http://www.bopp.com)

### G. BOPP + CO. AG

Mühltofel  
CH-9427 Wolfhalden  
Phone +41 (0)71 888 60 66  
E-Mail [info@boppwh.ch](mailto:info@boppwh.ch)

### Filinox AG

Mühltofel  
CH-9427 Wolfhalden  
Phone +41 (0)71 888 60 22  
E-Mail [info@filinox.ch](mailto:info@filinox.ch)

## ■ Germany

### Spörl KG

Staudenweg 13  
72517 Sigmaringendorf  
Phone +49 (0) 7571 7393-0  
E-Mail [post@spoerl.de](mailto:post@spoerl.de)  
[www.spoerl.de](http://www.spoerl.de)

## ■ England

### G. BOPP & CO. LTD.

Grange Close  
Clover Nook Industrial Park  
Somercotes, Derbyshire DE 55 4QT  
Phone +44 (0) 1773 521 266  
E-Mail [info@gbopp.com](mailto:info@gbopp.com)  
[www.boppmesh.com](http://www.boppmesh.com)

## ■ Italy

### BOPP Italia srl

Via Sestriere 5/3  
10060 Candiolo (TO)  
Phone +39 011 9624984  
E-Mail [info@bopp-italia.it](mailto:info@bopp-italia.it)  
[www.bopp.com](http://www.bopp.com)

## ■ Sweden

### BOPP Utildi AB

Box 118  
SE-312 22 Laholm  
Phone +46 430 792 50  
E-Mail [bopputildi@bopputildi.se](mailto:bopputildi@bopputildi.se)  
[www.bopputildi.se](http://www.bopputildi.se)

## ■ USA

### G. BOPP USA Inc.

4 Bill Horton Way  
Wappingers Falls, NY 12590  
Phone +1 845 296 1065  
E-Mail [info@bopp.com](mailto:info@bopp.com)  
[www.bopp.com](http://www.bopp.com)

## ■ Korea

### Samwoo Enterprise (G. BOPP ASIA)

Room 536, Shinan Metro Khan B/D  
1115, Bisan-Dong, Dongan-Gu  
Anyang-City, Kyungki-Do  
Phone +82 31 388 0656  
E-Mail [boppasia@bopp.com](mailto:boppasia@bopp.com)

## ■ China

### Samwoo Enterprise (G. BOPP ASIA)

Room 508, Building B  
Lotus Square  
No. 1050, Wuzhong Road, Minhang  
District Shanghai  
Phone +86 21 6126-5496 / 5497  
E-Mail [boppasia@bopp.com](mailto:boppasia@bopp.com)